

OREGON WELL UP IN LIST IN 1918 OF CARS LICENSED

Total Revenue in Entire Country Last Year Amounted to Huge Total of \$44,496,232.

THIS STATE PAID \$461,422

Number of Registrations So Far This Year Is Nearly 70,000, or More Than Total for 1918.

Oregon motorists stood twenty-third in the list in amounts paid for license tags last year. The 1918 fee total was \$461,422 and this sum already has been passed this year. There have been nearly 70,000 automobiles registered so far in 1919.

The motorists of the United States paid the amazing total of \$44,496,232 for the 1918 licenses as follows:

State	License fees
Alabama	\$ 259,361.00
Arizona	125,837.00
Arkansas	414,586.00
California	3,526,072.88
Colorado	340,000.00
Connecticut	555,530.41
Delaware	195,195.00
Florida	335,000.00
Georgia	449,000.00
Idaho	575,242.21
Illinois	2,783,845.03
Indiana	1,293,128.50
Iowa	2,547,565.80
Kansas	95,368.00
Kentucky	402,234.28
Louisiana	240,000.00
Maine	370,115.50
Maryland	445,609.13
Massachusetts	1,156,845.37
Michigan	2,475,266.32
Minnesota	1,018,435.00
Mississippi	225,284.00
Missouri	1,898,528.19
Montana	130,913.50
Nebraska	325,000.00
Nevada	31,802.75
New Hampshire	436,674.73
New Jersey	2,413,939.89
New Mexico	105,031.25
New York	4,297,228.50
North Carolina	384,738.47
North Dakota	452,587.47
Ohio	1,890,427.50
Oklahoma	1,300,000.00
Oregon	461,422.00
Pennsylvania	731,927.00
Rhode Island	38,793.00
South Carolina	300,216.72
South Dakota	282,742.00
Tennessee	400,000.00
Texas	2,036,588.00
Utah	129,234.00
Vermont	304,733.79
Virginia	873,391.25
Washington	280,750.00
West Virginia	2,002,745.00
Wisconsin	78,384.00
Wyoming	100,000.00
Total	\$44,496,233.33

Clutch Ailment
If the sliding member of the clutch is rusty, it will give the effect of a grabbing member. The rusted portion will prevent the clutch's engaging gradually, holding for a fraction of a second, and thus forcing a quick engagement. The operator often believes that the trouble is due to poor facing or worn engaging members.

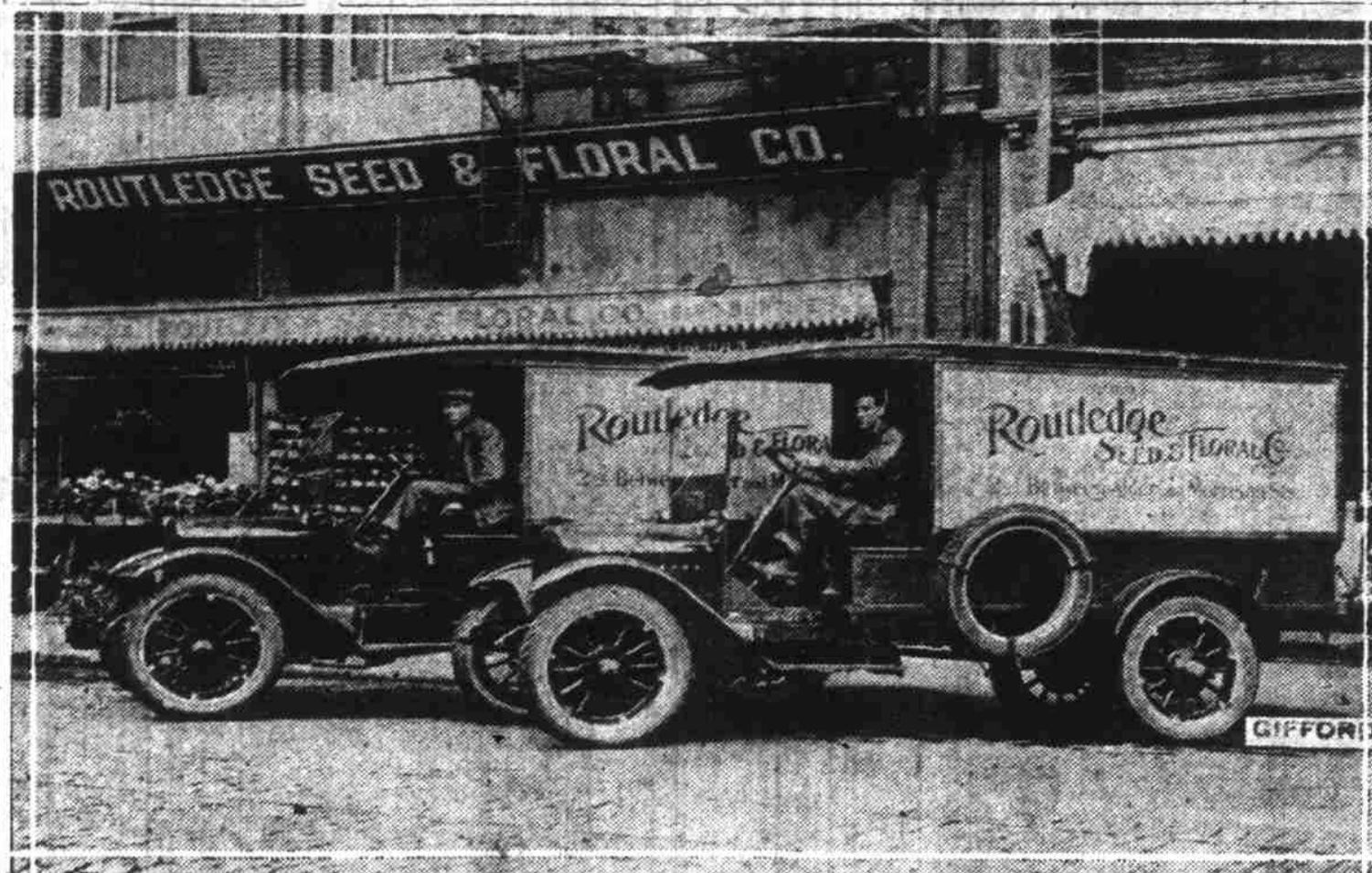
Dodge and Cadillac Motor Cars

Complete Selection
Good Used Cars

COVEY MOTOR CAR CO.

Twenty-first and
Washington

TRUCKS TO EXPEDITE DELIVERY SERVICE



Two new G. M. C. trucks purchased by Routledge Seed & Floral Co.

PRISONER BROUGHT BACK CHAINED TO MACHINE HE STOLE

Officer Takes Possession of Thief at Raleigh, N. C., and Drives Him Back to New York.

New York, May 31.—A dust-dirt, mud-caked automobile drove up to police headquarters with two bedraggled occupants, and Detective George J. Andrews of the automobile squad removed his goggles, stepped into the rear of the tonneau and unfastened a chain which attached a pair of handcuffs to an iron stanchion at the bottom of the car, releasing a prisoner who was led into the building.

Detective Andrews reported to Inspector John J. Cray that he had brought back Harry Resin of 77 Bay Twenty-ninth street, Bensonhurst, from Raleigh, N. C., and had ridden the entire distance with the prisoner handcuffed and chained in the rear of the car he is alleged to have stolen.

PRISONER NEARLY ESCAPED
An enforced stay at Fredericksburg, Va., from Thursday until Sunday, while the automobile was undergoing repairs, almost resulted in the escape of Resin from the local jail. When Andrews called for his charge he found that the prisoner had already removed part of the wall of his cell, and it is the belief of the detective that if he had been given a few hours more he would have succeeded in removing enough of the masonry to effect an escape.

Resin was arrested in Raleigh and Andrews started on the overland journey the following day. The trip from Fredericksburg was made in 24 hours of continuous travel, stopping only long enough for food.

FOUND HIM IN RALEIGH
Resin is charged with having stolen an automobile belonging to Miss Lillian Duffy, a school teacher of 8748 Bay Sixteenth street, Bensonhurst, on April 2, while the car was standing in front of his home. It was understood that he had headed south, and the police wired the various towns along the route he was believed to have taken. When Resin rolled into Raleigh the chief of police looked at the license number and arrested the driver.

When Andrews arrived there he decided to bring back with the automobile and the prisoner. With the car stocked with a bottle of water and a basket of food, and the prisoner chained in the rear of the tonneau, he started north. Engine trouble developed on the way and he stopped in Fredericksburg for repairs.

Moving Pictures to Aid Building Roads

The government is taking up the good roads movie idea which has figured so prominently in various state bond issue campaigns as an item of propaganda for highways development. The war department has 1,000,000 feet of negative representing every phase of America's part in the war, little of which has been released, and this will be used to show road making in France under fire, difficulties of transportation, etc. Then the films will be branched into road construction in this country. Government films are to be supplemented by others from the N. A. C. C.

Differential Acts As Fine Equalizer

Do not disengage the clutch when braking the car on slippery streets. The differential acts as an excellent equalizer for the brakes if the weight of the engine is left on the drive shaft. Prove for your own satisfaction the great advantage of keeping the clutch engaged by throwing the brake on hard on a wet pavement with the clutch out and the car moving rapidly, and doing the same thing with the clutch remaining in engagement.

Packing Pump Is Often Right Cure

When the water pump begins leaking do not assume that necessarily it is because the nut is too loose. Frequently the nut is not to blame at all, but poor packing is the real cause of the trouble. Packing for this part consists of candle wick soaked in tallow, heavy twine similarly treated, or special packing material. After the nut has been turned to press the packing down do not turn it farther, as excessive squeezing is apt to damage some part of the body of the pump.

English Auto Men Planning New Car

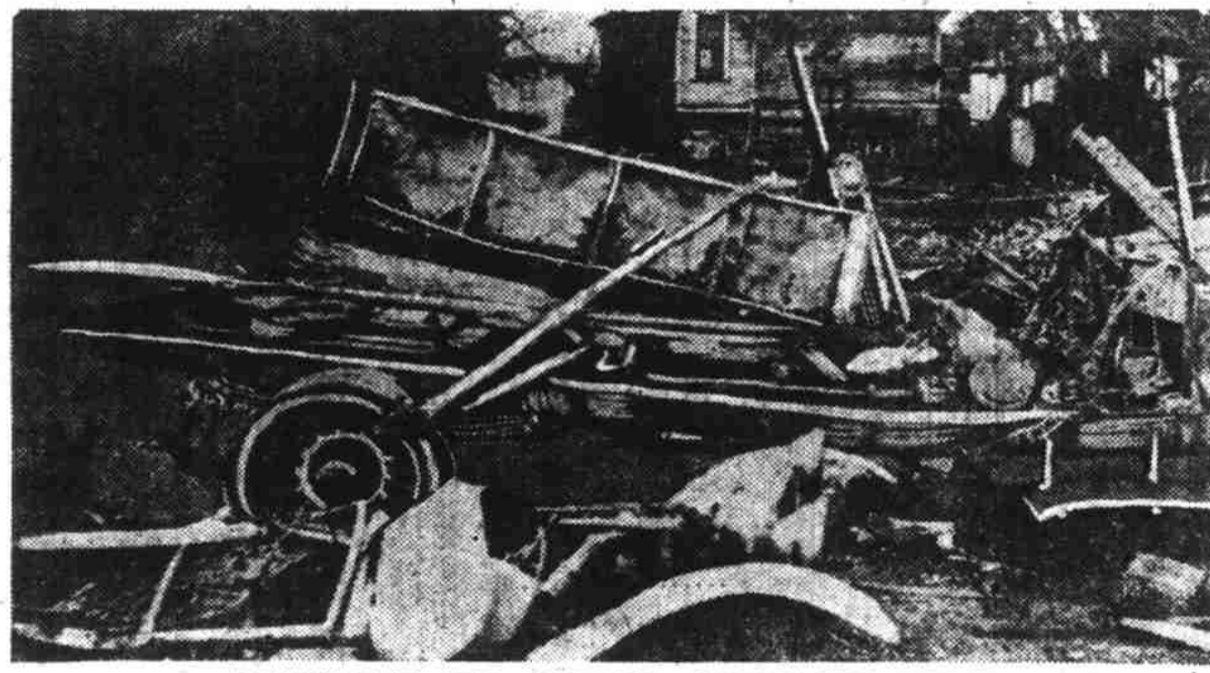
Among the new automobile models which are being prepared for early appearance in England is a new air-cooled two-seater car, whose weight, it is said, will not exceed 600 pounds. It will be known as the A. B. C. light car. The engine rating will be from 15 to 25 horse power, the latter being the estimated rating at 3000 revolutions. It is of the twin cylinder horizontal opposed type, depending on its crank shaft speed for its relatively large power output. It is said the price will be just under \$1000.

Felt Washers Under Iron Ones Useful

Most car owners know that the use of felt washers under the iron washers in certain instances is a useful idea. The felt washer gives an elastic hold, allowing for expansion or contraction, and may keep the threads of an over-tight bolt from stripping. However, most of them do not know that the ordinary corn and bunion plasters make acceptable felt washers and are always easily obtained.

The Universals
These are perhaps the most neglected parts of the mechanism, because they are generally the hardest to get at. The universals must be kept properly lubricated or they will develop intensive wear. When they have worn the universals emit a heavy thump each time the clutch is thrown in.

PROMPT ACTION



REDUCED TO TOTAL LOSS BY FIRE

Insurance \$5700.00
Loss Occurred at 3:00 A. M.
Loss Paid in Full 2:30 P. M.

THE PACIFIC STATES FIRE INSURANCE COMPANY and **THE OREGON SURETY & CASUALTY COMPANY**, both HOME COMPANIES with headquarters in PORTLAND, write a joint policy insuring your automobile against every contingency. FIRE, THEFT, COLLISION, PROPERTY DAMAGE and PERSONAL LIABILITY. One policy covers EVERYTHING. The most liberal contract offered. No delay in adjustments, as the Home Office and assets of the companies are here in OREGON.

Do your part and boost HOME INDUSTRIES
Keep your money in Oregon
Give your insurance to your home companies
Agents in every city, town and village

Pacific States Fire Insurance Company Covers Fire, Theft, Collision and Property Damage
The Oregon Surety & Casualty Company Covers Liability

T. H. WILLIAMS, Secretary-Manager
Title and Trust Building, Portland, Oregon

CARE OF TIRES LESSENS TROUBLE WHILE ON TOURS

Main Fault to Be Found Is That Motorists Allow Their Tires to Wear Too Long Before Repair.

MANY PARTIES ARE SPOILED
One Important Thing Above All Is to Keep Tires Inflated Properly and Not Run Flat.

How many times have you slowed down along the highway and commiserated with a man who was sweating copiously while changing a tire, and then drove on serene in the knowledge that it was not your car that had tire trouble?
A great deal of this tire trouble could be eliminated by motorists if they would only pay a slight degree of attention to their equipment.
The main trouble is that motorists allow their tires to wear too long before they get new ones or have them repaired. When a casing is worn down to the fabric it is time to take that tire off and get a new one and use the old one only for emergencies. When you start out on a trip be sure that you have good tires all round. There is no more annoying thing than blowouts or trouble while traveling in an automobile.

GOOD TIMES SPOILED
Tire grief often breaks up a happy party, because the man who has to do the work is dressed in good clothes and necessarily does not want to get dirty. He takes off his coat, rolls up his sleeves and starts. He curses loudly and long, and the women in the car hold their ears.
With proper care a great deal of this trouble, if not all, could be eliminated. One thing a motorist should do which he does not do now is to keep the tires inflated to the proper air pressure.
If the tire is allowed to run flat the side walls soon become weakened and then break and the tire is worn out long before its usefulness should have ended.
CUTS ARE BAD
Then, too, take care of tire cuts. If these cuts are allowed to develop they will mean blowouts and a lot of grief.

Sand and water work into these holes in the rubber, and with the continued grinding as the wheel revolves there is a wearing action that is impossible for the rubber to resist. Soon these particles wear clear through the tire and there is a blowout.
Stop these cuts up with putty after you have cleared out the holes. This will prevent foreign matter from entering and do more good than you think.
A little attention to tire equipment will mean a lot of money in your pocket at the end of the year, more than you realize.

Steering Is Important
The steering wheel is vastly important, but it is also well to give the grease cups an occasional turn.

Jack Up Rear Axle As Last Resort to Get Machine Going

When the electric starting system refuses to start and the crank has been left home in the garage, the motorist still has methods of getting the car going. The best way, perhaps, is to jack up one of the rear wheels and turn it by hand with the clutch engaged and high gear shifted in. The spark should be retarded and only a small throttle opening allowed. Before removing the jack, the gears should be shifted to neutral again.

JOURNAL'S AUTO DIRECTORY

ARCHER & WIGGINS

Distributors of AUTOMOTIVE ACCESSORIES
Sixth Street at Oak

Franklin offers more of "what you actually need and want in an automobile"
BRALY AUTO CO.
Main 4680, A-3881, 19th and Washington Sts.

BROADWAY AT OAK
Mitchell, Lewis & Staver Co.
FIRST AND EAST MORRISON

Willard
AUTO ELECTRIC EQUIPMENT CO.
We Stock Them. We Repair Them. We Charge Them.
Sixth and Burrside Streets.

Columbia BATTERY CO.
Broadway and Glisan Phone Bdwy. 548
The only battery with a definite guarantee.
All makes of batteries charged and repaired.

David Hodes Co.
N. Broadway and Flanders
AUTOMOBILE GEARS AND ACCESSORIES AT REDUCED PRICES
ENGINES A SPECIALTY

Gibson Electric Garage & Storage Battery Co.
Distributors
15th and Alder Sts. Broadway 2221

VESTA BATTERY
DOUBLE LIFE STORAGE BATTERY



The City of GOODRICH Akron, Ohio

He Was a Big, Hearty Fellow, But—

He caved in because he was weak inside. A husky, strapping outside has no chance without a hardy inside.
Especially in tires you need the inner strength that goes deeper than a casing. You need the toughest, hardest tubes to give your shoes a chance to render all they are worth.

Begin right by equipping your car with the lustrous, full-bodied casings of Silvertown Cords. To end right put Goodrich Tubes in your Silvertowns.

Put in Red Tubes if you wish the full measure of Goodrich long experience and skill in making tubes for tires — or put in Gray Tubes, a long-lasting tube at a shorter price. Red or Gray, Goodrich Tubes withstand age rotting.

For 100% security in your tires, be Goodrich through and through with Goodrich Casings and Tubes.

Then you revel in the easy riding comfort, elegance, and mileage of Silvertowns, the tires with the Twin Red Diamonds on the sidewall.

Buy Goodrich Tires from a Dealer

SILVERTOWN CORD TIRES

"BEST IN THE LONG RUN"

