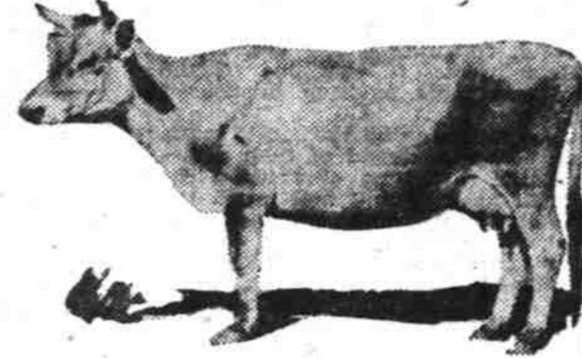
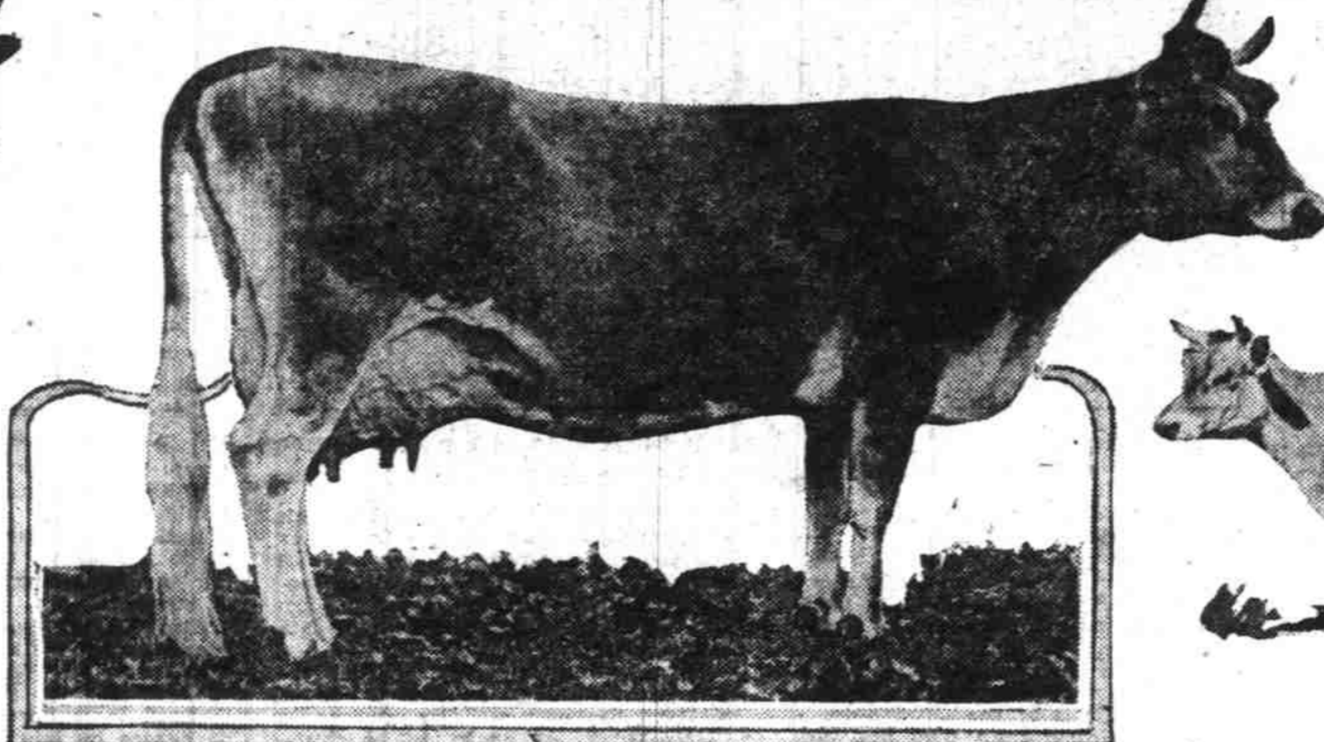
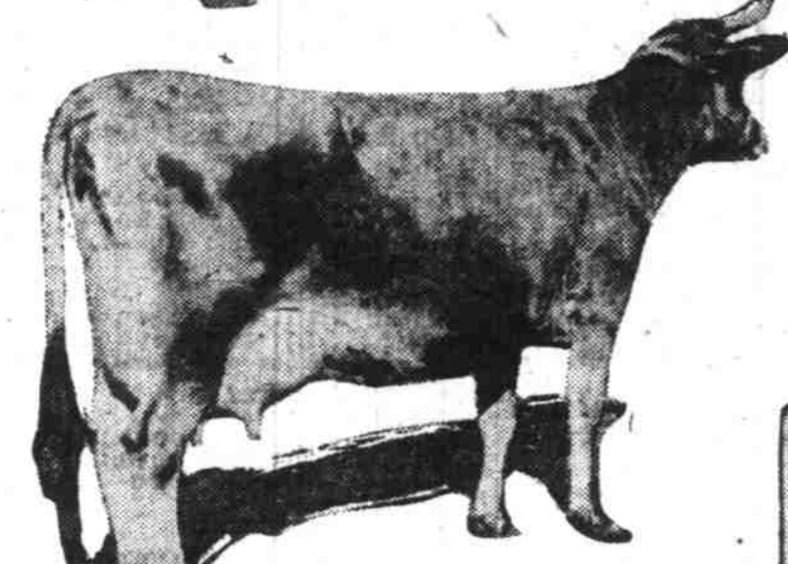
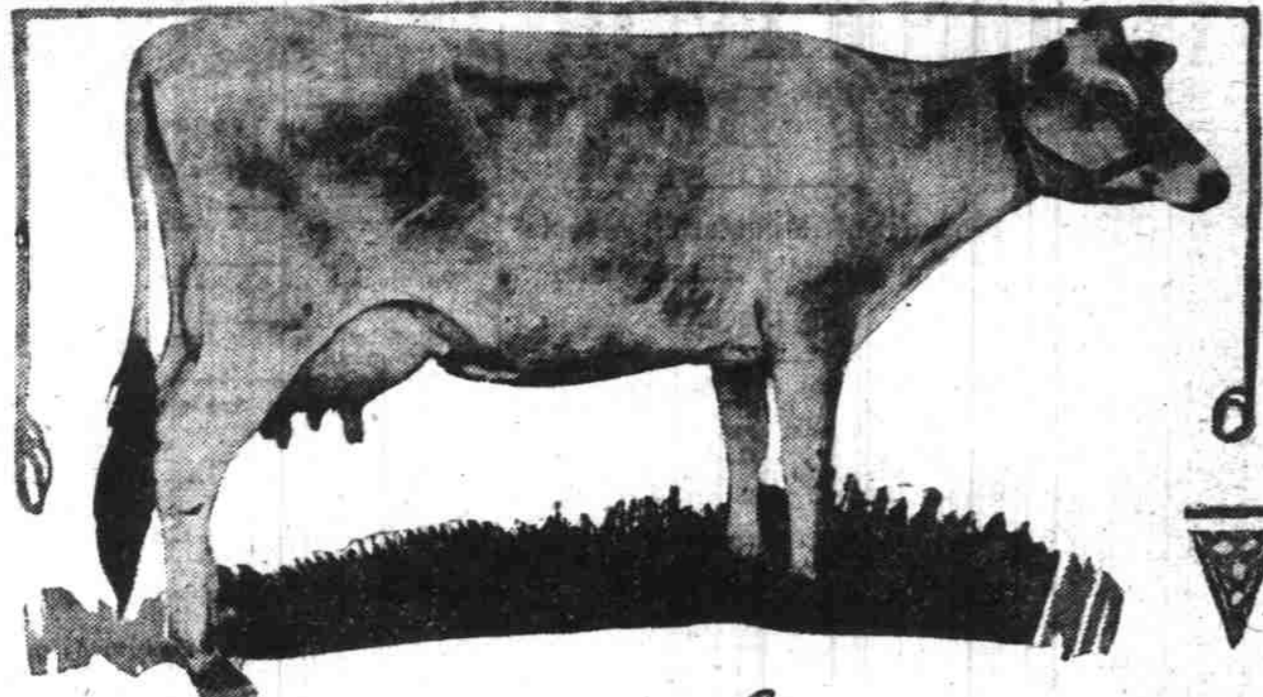


Better Farming--AGRICULTURAL DEPARTMENT--Efficient Marketing

EDITED BY J. F. LANGNER

JERSEY COWS ARE MAKING OREGON INTERNATIONALLY FAMOUS



Top, left to right—Golden Cicero, owned by A. J. Johnson, Willamette farm, Corvallis; Financial Sensation, who held many world's records entering Waldorf hotel, New York, where she attended a dinner. Bottom—Old Man's Darling 26, junior 4 year old world's champion, and Vive La France, world's champion Jersey cow. Vive La France holds both junior 3 year old and senior 4 year old world's records. Both Vive La France and Old Man's Darling 26 are owned and bred by Ovid Pickard of Marion, Marion county, Oregon. To right of Vive La France is La Creole's Amys Queen, owned by W. O. Morrow, the well known Jersey breeder of Independence. Bottom, left—Walter K. Taylor of Corvallis, president Oregon Jersey Cattle Club, president State Livestock Sanitary Board and director of Oregon Dairy Council.

FARMERS FAIL TO APPRECIATE VALUE OF COOPERATION

Many Fruitgrowers of Willamette Valley Now Regret Failure to Join Associations.

LOWER PRICES PAID THEM

Menace to Oregon Prune Seen In Advertising Campaign Undertaken by California People.

By J. F. Langner

Hundreds of fruit growers of the Willamette valley are today regretting that they were not members of a cooperative association of farmers during the recent frenzied prune activity.

The farm editor of The Journal has been invited to attend many farmers' meetings in the state of Oregon to address them on the subject of cooperative marketing. Despite the fact that practically every farmer in the state is convinced of the value of cooperation; despite the fact that the cooperating farmers in the state of Oregon are receiving on the average a higher price for their prunes than those who persisted in remaining outside the great pools; in spite of the fact that hundreds of prune growers sold their prunes at opening prices, at prices less than the top, while the members of the Salem Fruit union are to receive the highest price for 2,000,000 pounds of prunes, there are still a large number of farmers who have not yet conceived the idea of cooperative marketing.

COOPERATION IS DEFINED

Cooperation means working together for a common good, such as obtaining a higher price for a product. Once more we reiterate that it is believed by those farmers who are cooperating that they are as much entitled to have a voice in fixing the price at which they will sell their product, as is any other producer.

Farming is more of a business than it ever was. Competition is perhaps greater in the disposal of farm products, particularly in the fruit business, than in any other, and the life of the future horticultural industries of the state of Oregon depends absolutely on the willingness to get together, the foresightedness of the farmers in creating and assuring markets for future surplus.

CALIFORNIA GROWERS ADVERTISE

The announcement of the California Prune Growers' association that it will spend \$210,000 advertising California prunes this year should cause every prune grower in the state of Oregon to realize the value of this means. It means that whenever you pick up a magazine you will see an advertisement of the California prune; it means that 100,000,000 Americans are to be urged to give their preference to the California prune; it means that every jobber and retailer, every wholesaler and grocer and every kind of distributor, will be advertising the California prune in preference to the Oregon prune; it means that as the prune crop in Oregon gets greater, as will each succeeding year, the California growers will have more and more difficulty in selling; it means that once more the great consuming public of this nation will be misled into the belief that prunes do not grow in Oregon to any extent and that the California prune is better.

DANGER TO OREGON SEEN

Unquestionably capita will be made of the fact that the California prune is a sweeter prune and requires less sugar than the Oregon prune; unquestionably the public sentiment is already attracted towards California fruit products; and the way will be made easy for the California prune grower and comparatively harder for the Oregon prune grower.

It is useless because we happen to have had a high price this year to delude ourselves with the belief that we are always going to get high prices. The greatest authorities agree that if we have anywhere near normal crop in Oregon and California this year that prices of prunes next year will probably be lower. It will be foolish of us to sit still and let California take the cream of the market because they have in that state a strong association of 7000 prune growers banded together to sell two pounds of prunes where they could only sell one pound of prunes before. Keep in mind that California will have a 250,000,000 pound prune crop next year and that it will have a 600,000,000 pound crop in the next five years.

CALIFORNIANS SHOW SENSE

Formerly the prune consumption in the United States was only 100,000,000 pounds per year. The California association was organized at the time when prunes were selling comparatively high, because the growers down there had the foresight to realize that bigger crops meant less money without organization. The Journal is deeply interested in the future of the prune growers of Oregon and believes that a strong cooperative association of Oregon prune growers should be organized to compete with the already strongly entrenched California prune growers. The Journal believes that the Oregon prune growers face a period of ruinous prices, with a

consequent lowering in land values and a prospective consequent disintegration which would result from a profligate farming community.

In the interest of the Oregon prune industry every prune grower who is not affiliated with one or another of the prune associations of the state should communicate with the manager of the nearest local association for further information on future prospects of the prune industry in this state; or if they prefer, with the farm editor of The Journal.

OREGON PRUNE BEST GROWN

The Journal believes that the Oregon prune is the finest in the world, and that it is entitled always to command the top prices, and it believes that with a strong association of prune growers, this desirable end will be accomplished. It will do its share towards seeing that prune growers always get the best prices to which they are justly entitled.

Recent market values for meat animals have caused a renewal of interest in the raising of livestock on farms of all sizes. The study of raising and disposing of crops to the best advantage also suggests the more general and more careful production of livestock.

LIVESTOCK

Losses of livestock from diseases, accident and other causes, probably three fourths of which are preventable by proper preventive measures and modern veterinary practice, amount to enormous sums each year—in 1915 they were estimated as reaching \$212,000,000. This sum, say specialists of the United States department of agriculture, would supply the entire American expeditionary forces of 2,000,000 men with meat for nearly a year. To these losses may be added others which, though indirect, are nevertheless as important. The discouragement of stock raising is one indirect loss, and this in turn retards the development of diversified agriculture.

During the 12 months ending June 30, 1917, the exports of pork and pork products from the United States to the allies, neutrals, Belgian relief, and American expeditionary forces amount to 1,498,512,713 pounds. For the following year they amounted to 1,179,701,178 pounds. The requirements for shipment abroad in 1919 necessarily must be somewhat greater than the amount sent in 1918, according to the United States department of agriculture, and to meet this demand and to feed the population at home without decreasing this country's ability to maintain a high rate of production is the opportunity and obligation of American swine raisers.

At the farmer's breakfast table in 1918 he drank coffee that cost him 18 per cent more than in 1914, and he had sugar that cost 59 per cent more, bread made from flour that cost 92 per cent more, and, whatever use was made of lard, it cost him 133 per cent more than in 1914.

GRAZING LAW IS UNDER DISCUSSION

Cattlemen Meet in Ashland and Demand Enforcement of Recent Act Protecting Food.

Ashland, May 10.—Priority cattle grazing rights, cooperation in protecting them and the united force of a big body of cattlemen to demand the enforcement of the law recently passed by the legislature which forbids the encroachment of sheep and goats on cattle territory were discussed by representatives of the Keene Creek Cattle and Horse association, the Skookum Gulch Cattle association and the local sheepmen at the entire American expeditionary forces of 2,000,000 men with meat for nearly a year. To these losses may be added others which, though indirect, are nevertheless as important. The discouragement of stock raising is one indirect loss, and this in turn retards the development of diversified agriculture.

The Keene creek territory lies east of Ashland to Jenny creek and north to the Dead Indian country. The ranchers

cooperate with the government and use lands in the Crater national forest.

The Skookum territory is in the Klamath country on private leases.

Sheepmen from the outside are shipping in great droves of sheep and it is to protect themselves from the encroachment of these that the cattlemen and local sheepmen are so closely cooperating.

These outsiders have encroached on Jenny creek and east into Klamath country. It is stated that the Western Sheep company has unloaded a double-deck car trainload at Ashland and will have 40,000 sheep ranging on recently acquired holdings along the Klamath river range this summer.

Representatives of these organizations will attend the next meeting of the Jackson County Stock association and try to get action through them.

F. C. Homes, secretary of the Keene Creek Cattle and Horse association, president in the absence of the president, George W. Dunn, George Grieves is secretary for the Skookum Gulch Cattle association.

Last year nearly 500 business and professional men and clerks and city employees of Portland volunteered for farm work during their vacation time. About 200 of these were placed and but for the short crop in the Willamette valley all would have been sent out.

Reflects Good Health

The milk flow is the best indication of the health condition of a cow. If the yield is below normal it is almost always a sign of approaching sickness.

Do not wait for actual disorders to develop; you can easily put the cow back on her feet and ward off serious ailments by the prompt use of Kow-Kure, the great cow medicine.

In cases of Abortion, Bacteremia, Retained Afterbirth, Scouring, Lost Appetite, Bunches, etc., this standard remedy is a reliable treatment. It acts at once on the digestive and genital organs, where nearly all cow diseases originate.

The occasional use of Kow-Kure, as directed, will prove an effective preventive of cow diseases—and disease-prevention pays big in dairy profits.

Feed dealers and druggists sell Kow-Kure in 60¢ and \$1.30 packages. Let us send you our FREE book, "The Home Cow Doctor."

DAIRY ASSOCIATION CO.
Lyndonville, Vermont

Economical Harvesting



Quesnell—One Man Harvester

When one man and six horses with a "One Man Harvester" can cut and thresh from 12 to 15 acres of grain a day.

Why use more?

Machine is pushed ahead of horses, cutting an eight foot swath, accumulating grain in a tank having capacity of 20 to 25 bushels.

Straw dump furnished as an extra when it is desired to save straw.

With three years' field experience, we are in a position to put "One Man Harvesters" in the field with assurance that they will meet the requirements in a better manner than any other method now in use.

Large ranches can use this machine as well as small ones by adding machines.

Less investment in money, man and horse power, with maximum of returns.

We have a limited number of machines for sale for the coming harvest.

Multnomah Iron Works

PORTLAND, OREGON

Your Right to Safety

Leave your stockyard check with us for deposit to your home bank account.

LIVE STOCK STATE BANK

Located at Union Stock Yards North Portland, Oregon

Served by five transcontinental railroads and deep water to the sea.

Farm Bureaus Are Arousing Interest Of Agriculturists

"The newly organized farm bureaus in the county agent counties are getting into the game better than was hoped for," says J. W. Brewer, farm help specialist. "An interest is being manifested and many a farmer who never before gave thought to the agricultural development and good of his county beyond his own farm is now wide awake and devoting part of his time to those things which make for better things on the farm. Organization counts and through it practical results can be obtained that would never be accomplished otherwise."

Rye is receiving more attention in the United States now than ever before. More acres and more bushels of rye were harvested in 1918 than in any previous year in the history of the country.

Distributing Agents for OREGON, WASHINGTON, IDAHO

FOR SHARPLES Suction Feed Separators and Mechanical Milkers

We Carry a Complete Stock of All Sizes and Parts and Can Make Prompt Delivery

The New Sharple's Suction Feed Cream Separator

THE MILK is drawn up through the bottom of the bowl by the suction force of the revolving bowl—and the greater the speed the faster the separation—But at all speeds the NEW SHARPLES SKIMMERS CLEAN—and the cream is of uniform density—Just what you set the cream screw for—and you get all the cream at any speed—fast or slow—and the faster you turn the greater the capacity.

Sharple's catalogue and full details on request.

Sharples Milker

Sharples Milkers are instantly adjustable to hard or easy milkers, and the famous "upward squeeze" feature preserves the teat in a normal condition; these two features are covered by patents that cannot be infringed—all other milkers depend entirely on suction. Catalog and full information on request.

DAIRY ASSOCIATION CO.'S REMEDIES

KOW-KURE makes poor cows good—makes good better—gives specific remedy for cow diseases.

BAG BALM—a soothing, penetrating ointment for all affections of the bag.

GRANGE GARGET CURE—An unsurpassed and positive cure.

HORSE COMFORT—For wire cuts and all flesh wounds. See bottles wt. 1 lb. and 4 lb. bottles wt. 2 lbs. Dealer or send us direct.

AMERICAN HORSE TONIC—A general improver for horses.

OUR 1919 Catalogue and Planters' Guide is the standard reference for Growers of the Northwest, listing the best of everything for Farmers, Gardeners, Home Owners, Poultrymen and Bee-Keepers—gives reliable information and is a safe guide to your purchases. Ask for Catalog No. 500.

Your name should be on our mailing list.

PORTLAND SEED CO.

Salesrooms and Office S. E. Corner Front and Yamhill Sts.

Warehouses East First, Second and Alder Sts.