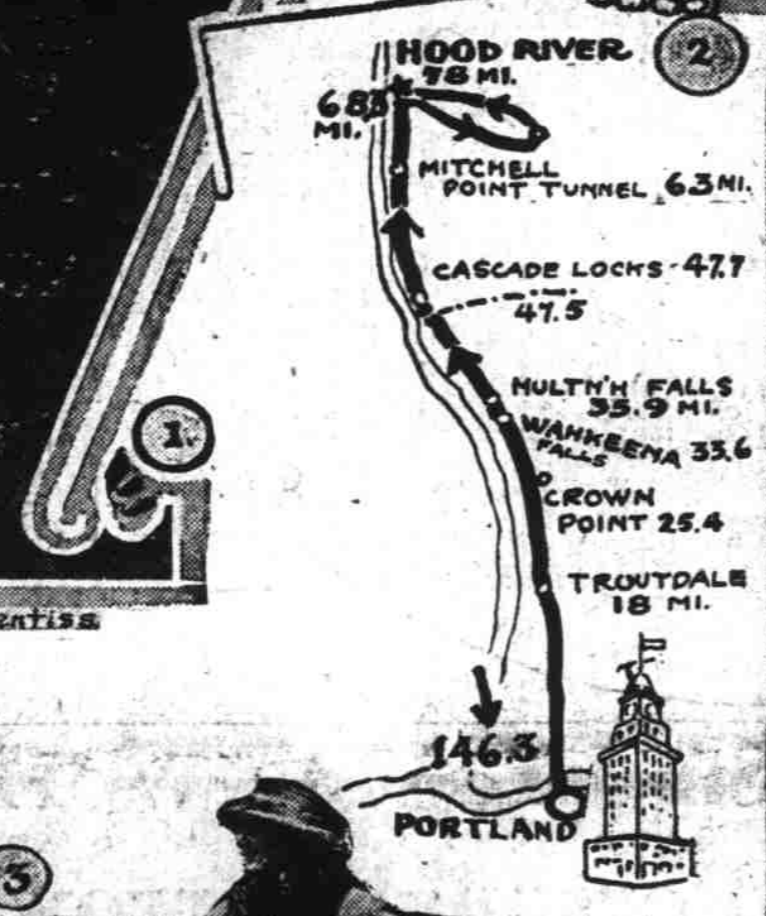
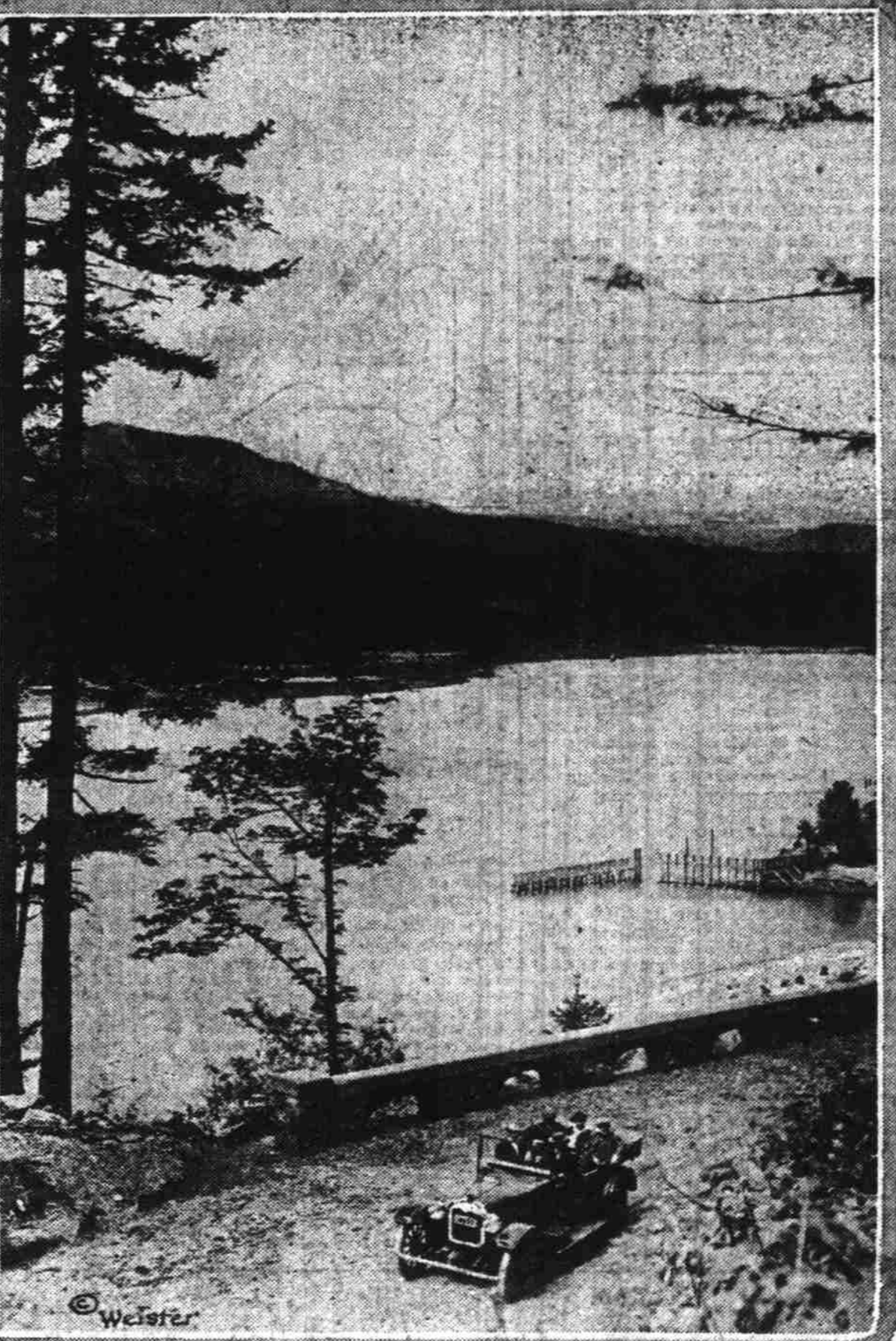
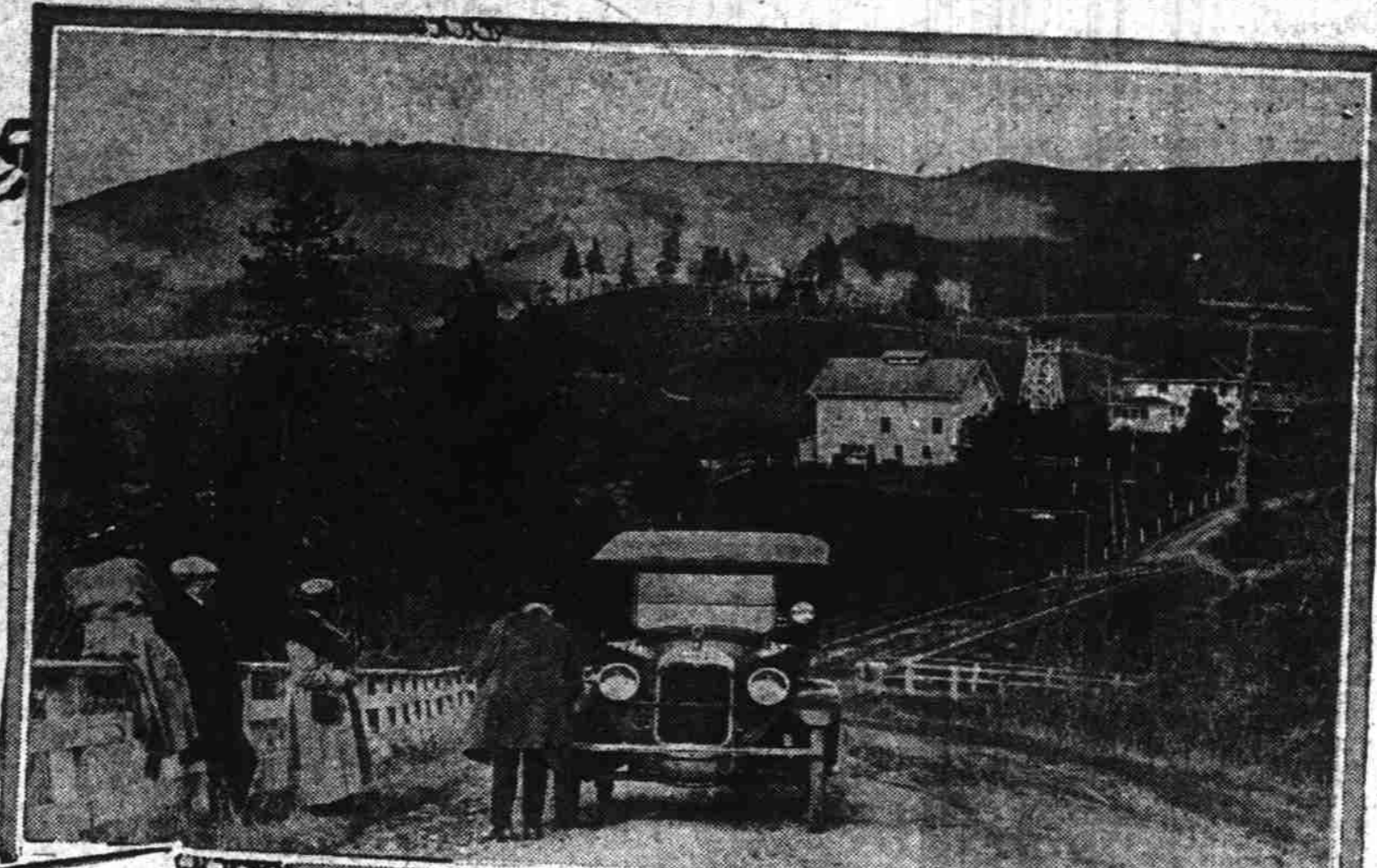
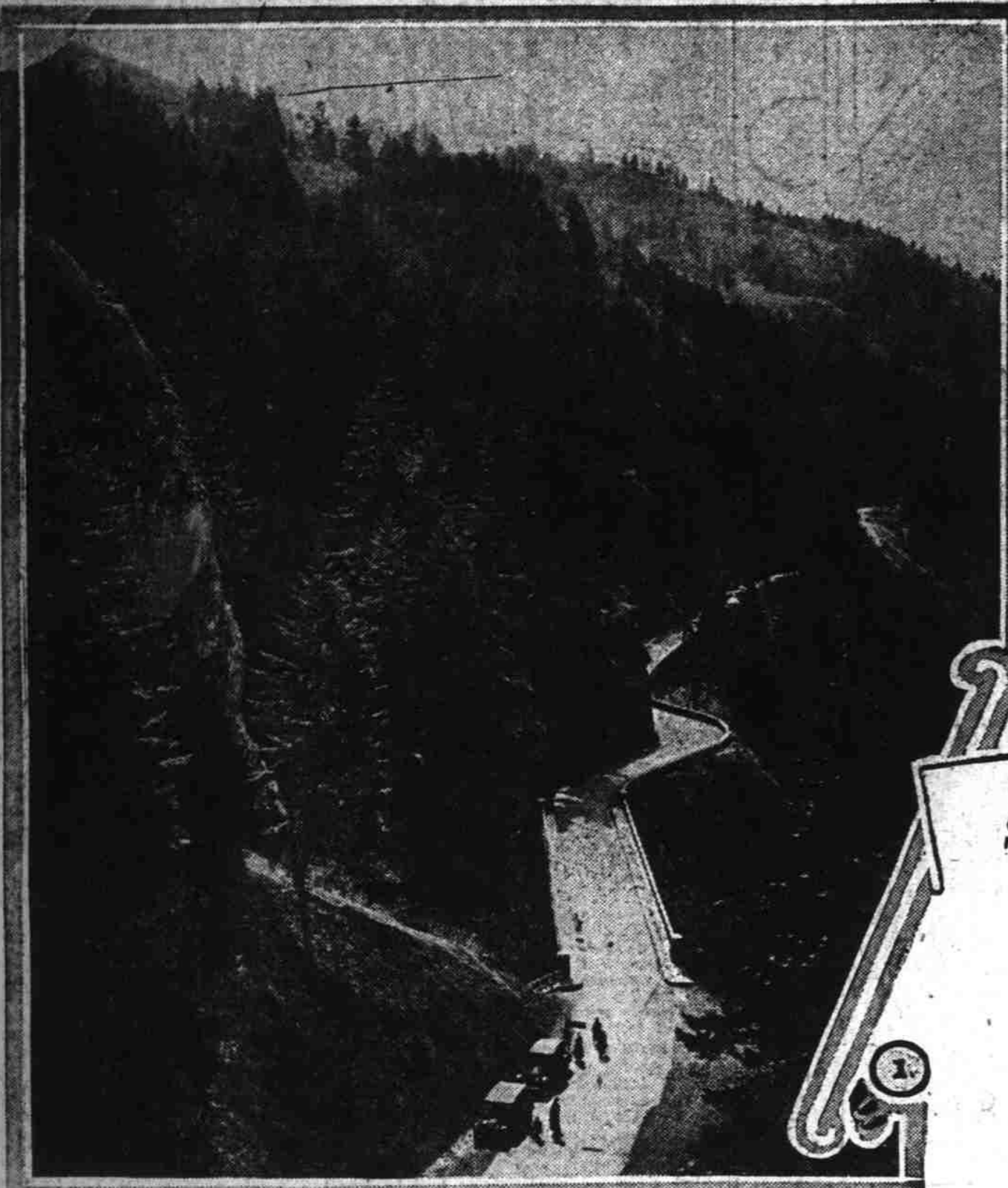


PORTLAND, OREGON, SUNDAY MORNING, APRIL 13, 1919.

ROUTE TO HOOD RIVER VALLEY AND RETURN



Greatest Pictorial Record
OF THE
Peace Conference
IN THE
Oregon Journal

Sunday, April 20

Four pages of photographs showing each of the seventy odd delegates to the World Peace Conference at Paris



GEORGE W. HARRIS

George W. Harris, president of Harris & Ewing, photographic news service, went to Paris several weeks ago; secured individual photographs of every delegate accredited to the conference and the photographs now are ready for distribution.

This remarkable feature which shows in picture the master statesmen of six continents will be published exclusively in this field by **THE SUNDAY JOURNAL**

Make sure of securing these pictorial pages by placing your order **NOW**

NEXT SUNDAY

APPROACH OF BLOSSOM TIME LURES MOTORIST TO HOOD RIVER VALLEY

By J. Chandler Egan
THE JOURNAL tour led to Hood River valley last Sunday. It was like a voyage of discovery in which the craft was the Grant Six, the charted course the Columbia river highway and the Hood River valley loop, and the ports of call the places of interest along the highway and the Hood river apple-orchards.

SCENES reminiscent of a motor run to Hood River and return in a Grant Six, with a 10-mile loop trip through Hood River valley, a total distance of 146.3 miles.

(1) Remarkable view of Columbia river highway looking toward Crown Point from the top of the cliffs adjacent to Shepperd's Dell; (2) In the Hood River valley; (3) At the Rotary fountain, Wahkeena Falls; (4) Along the highway near Oneonta Gorge; (5) Columbia river highway near Multnomah Falls.

How is the Road?

As the motor touring season advances, the Sunday Journal automotive pages will make a feature of information regarding road conditions, hotel accommodations, camping facilities, etc. in the Pacific Northwest. Complete information in this regard also is to be had free upon application to The Journal Information and Travel Bureau, Dorsey B. Smith manager, first floor Journal building.

Corvallis
April 12.—The Pacific highway from Albany through Corvallis to Monroe and clear through to Eugene, is in excellent condition for automobile travel. The west side route is also good, says Wade Malone, county judge, with the exception of short stretches near the Polk county line, which were not graded.

The road to Philomath is much better than ever before, and fully up to Pacific highway standards. The Marys Peak road runs through Philomath eight miles, and seven miles beyond to the end of vehicle road, at the terminus of the logging railway line. It is a two and a half mile hike over good trails for horse and man to the crest of the mountain, one of the best scenic points of the coast. The Pacific ocean stretches away toward the west, and the Willamette valley and Cascade mountains are in plain view on the east.

The Newport roads are not in good condition but will be passably good with a little further drying and work.

The Alosea and Waldport roads, also through Philomath, are in very good shape as far as the Alosea valley, 26 miles. The distance to Tidewater, 28 miles, is muddy and rough now, but will be in shape when the beach season opens. It is 12 miles over fair roads from Tidewater to Waldport, and seven miles of fine hard beach on to Yachats.

The Julian and the Corvallis hotels in Second street and the Andrews & Kerr lunch and bakery rooms in Third afford good living accommodations. For those who want to camp splendid camp grounds on the main highway at the end of the Marys river bridge are free. City lights and water, a couple of outdoor camp ovens, tables, benches, chairs and good sleeping and resting grounds are supplied free by the city and Benton county. These grounds are put in repair every spring by volunteer and contributed work.

Garages that offer storage room and carry repairs and supplies for automobiles are: Whiteside & Locke, Third and Madison; Corvallis Overland, Second and Washington; Stanley & Lazarus, Third and Adams; Ford garage, Second and Washington; M. A. Rickard garage, 235 Second street; Riley & Meyer, 241 South Second. All these garages are located on the main line of the Pacific highway, where automobile tourists may get supplies, repairs, gas, oil and free air.

Castlerock
April 12.—Castlerock is the half way point between Portland and Tacoma, Seattle, Rainier National park and Camp Lewis. The Pacific highway runs through the town north and south. There are two hotels, two cafes, with prospects of greater accommodations for tourist travel, should the demand justify. Two large, well equipped garages on the highway. The roads from Kelso to Castlerock are in good condition and from miles of fine hard beach on to Yachats.

(Continued on Page Six, This Section.)

(Continued on Page Seven, This Section.)