

SYRIANS ASK WILSON TO AID NATIVE LAND IN SOLVING PROBLEM

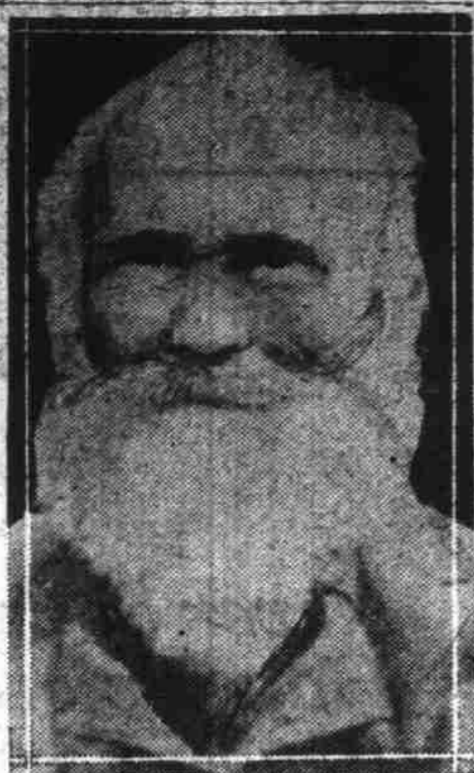
Telegram Asks President to Act as Trustee for Syrians in Reconstruction Era.

With the approval of Star lodge No. 4 of Portland, the supreme lodge, Knights of Modern Syria, backing the new Syrian National league, has sent to President Wilson a telegram suggesting that the happy outcome of Syrian problems can best be obtained if the United States will undertake the reconstruction of Syria and act as trustee for its people. The message to the president is as follows:

"Members of the Knights of Modern Syria, a fraternal order of Syrian descent, are unanimous in joining the new Syrian National league in the belief that the interests of Syria can best be advanced by this, our own country, if the United States will undertake the work of reconstruction as trustee of Syria. It is our earnest petition and cherished hope that you will lend your efforts to the accomplishment of this purpose. Syrians respect, trust and love the United States and pray that this, their supplication, may not fall upon deaf ears."

Patriotism Is Cited
 "The supreme lodge of the Knights of Modern Syria speaks for all members of the several lodges of its fraternal order, located largely in the West and Northwest. The members of this order have, we are proud to say, always been loyal and patriotic, supporting the government's war program in every respect. The supreme lodge sent the grand prefect, Dr. T. H. David of Williston, to different states to address Americans of Syrian descent, urging them to sacrifice time, money and life in the service of their country—in the service of the United States, which country is very dear to them."
 "The Syrians and Syrian Americans responded unanimously, for they felt their duty, as well as their privilege, to make sacrifices in answer to the government's request, knowing America had entered the war for the sake of humanity, justice and civilization."
 "Now, therefore, the supreme lodge of the Knights of Modern Syria, in be-

SOUTHERN OREGON LOSES PROMINENT CITIZEN



Robert A. Cook

half of all its members, joins the New Syrian National league in lifting up our voices to you and, through you, to our benevolent and beloved nation, praying that you heed the supplication of the Syrians and the request of the allies; that is, our country, whose motives are nowhere questioned, undertake to act as trustee for Syria in the coming days of reconstruction.

"Syria, at the present time, is like a poor orphan child whose father and mother have gone beyond and who is looking around with a broken heart and with tears in her eyes, with the expectation and the hope that a good, just and merciful father will adopt her to guard her life and her rights. May Uncle Sam act the good Samaritan and guardian to Syria and to Syrians who look to him as such. Please, Mr. President, accept our heartfelt congratulations and appreciation of the success and progress of your notable and praiseworthy plans and efforts for the peace of the world.

"In the interest of humanity and democracy, we are yours faithfully,
 "SUPREME LODGE OF KNIGHTS OF MODERN SYRIA."

DEATH TAKES PIONEER WHO CROSSED PLAINS BY OX TEAM IN 1853

Robert A. Cook Passes in Gold Hill; Spent 50 Years Engaged in Placer Mining.

Gold Hill, March 21.—With the passing Sunday of Robert A. Cook at the Gold Hill people of Jackson county lost another beloved pioneer. Mr. Cook was a native of Blunt county, Tennessee, and was born May 31, 1823. When a lad he moved with his parents to Missouri and in 1852 left for the Oregon country, with a large company with ox teams, arriving at Oregon City, June 27, 1852.

He first resided in Yamhill county, then in Lane and in 1859 settled in Josephine county on the Applegate river. Six years later he located on a homestead on Foothills creek, a few miles west of Gold Hill, where he had resided until death. He spent more than 50 years in placer mining on the streams of Southern Oregon; was postmaster of Draper on his old home place for 30 successive years, until the postoffice was discontinued. He served as county commissioner of Jackson county when the present courthouse in Jacksonville was built in 1882.

He was married to Elmira A. Woodruff during the journey over the plains. She died in 1908. He is survived by four sons, T. J. Cook, R. L. Cook, J. A. Cook and W. A. Cook, and one daughter, Mrs. Mary E. Woodruff, all residents of the Gold Hill district. Among his descendants are 17 grandchildren, 20 great grandchildren and nine great great grandchildren.

Gypsy Soothsayer Frightens Women

Disaster was predicted for the family of Bert H. Woods, 60 North Fifty-fifth street east, by a fortune teller who called at Woods' home Wednesday and threw his wife into hysterics by her dire predictions. Woods complained to the police Thursday that the woman, apparently a gypsy, had called at his home, and wanted to tell his wife's fortune. When refused she began foretelling the mishaps that were about to befall the

family, among them being the death of their 8-year-old son. The woman, according to Woods, has been going from house to house preying upon superstitious and nervous women. The police have been ordered to watch for and arrest the woman.

Sailors Jailed for Possessing Whiskey

George Becht, an engineer, and Gust Anderson, a seaman, were arrested aboard the Associated Oil company's tanker W. F. Herron at Linnton Thursday by a detail of police under Lieutenant Thacher. A sack filled with bottled whiskey was found aboard the vessel by the captain, who called the police and turned the liquor over to them. The two members of the crew were held for investigation. Abraham Ljensvold, a tailor, who was aboard the steamer and who was said to be a customer looking for whiskey, was also arrested.

Salmon Ships Ready For Annual Trip to Canneries in Alaska

The Alaska-Portland Packers' association, which operates a large salmon cannery on the Nushagak river, Alaska, is getting in readiness its two salmon ships, the Levi Eurgoes and the Berlin. These two wooden vessels, which are sent North each season and return with the season's pack, have been in use for many years, and their seaworthiness demonstrate that the wood ship, if properly built, can withstand the rigors of wave and wind in excellent manner. Very little repairs and overhauling have been necessary for the vessels. Both vessels are sailers, and on their voyages they have encountered many diverse weather conditions. The vessels go North with everything in the way of supplies and equipment

needed in the distant fishing station. Fishermen are now being signed up for the trip this year, and besides the crews taken from this port, who will return with the ships, Alaskan natives, who live in the fishing district, are given employment.

Mayor Would Take R. R.
 Detroit, March 21.—(U. P.)—Should Detroit become dissatisfied with ownership of the Detroit United Railways lines—if the deal goes through, James Couzens, millionaire mayor, announced today he would be pleased to head a

syndicate to take over the system for \$40,000,000.

An effective alarm to warn of the fall of rain or snow can be made by stretching silk between wires in an electric bell circuit as silk conducts electricity when wet.

Lipman Wolfe & Co. Music Floor The Seventh

Have Music In Your Own Home Whenever You Like

—Springtime dances are now the order of things—with the boys coming home and wanting entertainment. The newest songs—the best music of all kinds will always be yours to demand if you own a

Victrola

—We have them here for you in all styles and all sizes—from the small portable machine to the large handsome cabinet size. Come in and see them. Prices range from \$22.50 to \$282.50 and all are sold on convenient terms.

You'll Always Find the Newest Records Here

—People tell us that our assortments are the best in the city as a rule. Come in and let us play your favorites for you at any time.

Among the Most Popular New Records

- | | | |
|--------------------------------|-----------------------------|---------------------------------|
| Old Folks at Home | Till We Meet Again—Waltz | God Bless You My Dear |
| Old Black Joe, | Beautiful Ohio—Waltz | Kiss Me Again |
| Rockin' the Boat—Fox Trot | Head Over Heels—Fox Trot | My Irish Song of Songs |
| Girl Behind the Gun—Medley | I'm Always Chasing Rainbows | There's Somebody Waiting for Me |
| I'm Waiting for You, Liza Jane | Serenade | Faust—Salut, demeure |
| Mammy Mine | The Butterfly | The Lark |
| | | Pieta, Signore |

—Music Floor, The Seventh, Lipman, Wolfe & Co.

Lipman Wolfe & Co. Merchandise of Merit Only

A STORE for the family which must make its dollars go further. A store with all the good points of our "upstairs store"—with just as high standards—yet with lower prices (always).

Everything For Cash!

Economy Basement Store

"Where You Spend the Least and Get the Most For It."

Everything For Less!

THIS Basement is becoming the regular source of supply for more and more Portlanders who demand style, value and quality—and are willing to forego charge and delivery privileges to effect a saving.

Hundreds of Spring Garments at Unmatchable Low Prices

We Do Not Believe That For Style, Quality, Tailoring and Price These Garments Can Be Excelled in Portland!



- 1—Navy serge. Lined with fancy silk to waistline. Double collar. Braid trimmed. Chic. \$15.
- 2—Navy French serge with leucis of red silk at the neck and at the end of heavy cord. \$13.65.
- 3—Poplin—navy or black. An especially good model for the mature woman. Good value. \$13.65.
- 4—Velours in henna or Copen. Generously cut to give the smart silhouette. \$23.50.
- 5—Navy serge. Vestee of tan or French blue serge. Split panels. Lined to match. \$21.50.
- 6—Wool poplin. Navy, black or sauff. Vestee of tricotee make this suit very smart. \$23.50.
- 7—Waist—Georgette crepe, good quality—other styles. Skirt—silk poplin. All colors. \$3.65.
- 8—French serge in navy and Burgundy. Braid bound, buttons trimmed. Black silk girdle. \$15.
- 9—Navy French serge. Vestee of henna silk—black and silver embroidered. \$21.50.
- 10—Navy serge. Vestee front with belt. Braid and buttons trimmed. Excellent model. \$11.95.

All-Wool Navy Serge Suits \$15 | Beautiful New Silk Dresses \$10.95 | New Navy Serge Capes \$11.95

—One would scarcely hope to find suits of a standard fabric in styles that meet the season's requirements at the low price of \$15—yet here they are—and astonishingly good looking. One pictured above.
 —Economy Basement, Lipman, Wolfe & Co.

—Doubtless you remember the marvel sale of dresses recently held in the Economy Basement—here are more of the same lovely models in soft taffeta and crepe de chine, in smart styles—and at the same price. Many colors.
 —Economy Basement, Lipman, Wolfe & Co.

—As you can see by the illustration above these smart capes look like a lot more than \$11.95—with their new vestee fronts and trimming of black silk braid and buttons. Unusual for such wanted garments.
 —Economy Basement, Lipman, Wolfe & Co.

- Navy Serge Suits \$26.50**
 —Uneven braid-bound panels, deep revers and buttons make these suits uncommonly smart. And the value is almost unheard of.
 —Economy Basement, Lipman, Wolfe & Co.
- French Serge Frocks \$9.95**
 —High waist line models. Button back. Black silk braid. Pleated frill of beige Georgette, navy.
 —Economy Basement, Lipman, Wolfe & Co.
- Scores of Dresses \$11.25**
 —French serge. Square and round necks. Braid trimmed. Tunic and peplum styles. Touches of red embroidery. Remarkable.
 —Economy Basement, Lipman, Wolfe & Co.
- Wool Poplin Suits \$23.50**
 —Illustrated above—we recommend these suits as being especially noteworthy. Navy, black and snuff color. Tricotee vestees.
 —Economy Basement, Lipman, Wolfe & Co.
- Fine Serge Suits \$21.50**
 —Navy or black. Fancy colored lining. Showing the new ripple back encircled with braid bands.
 —Economy Basement, Lipman, Wolfe & Co.
- Outside Suits at \$31.50**
 —Navy French serge. Cut on the best lines for stout women. Semi-fitted belt styles. Also outsizes in coats and dresses.
 —Economy Basement, Lipman, Wolfe & Co.
- Silk Poplin Frocks \$6.75**
 —Straight, simple lines. Silk embroidered. Dainty white collars. Navy, taupe, Copen, black. A wonder value.
 —Economy Basement, Lipman, Wolfe & Co.
- New Sport Coats \$17.85**
 —Poiret Twill—the season's best fabric. For sportswear or street. Satin lined. All colors.
 —Economy Basement, Lipman, Wolfe & Co.
- Fine Serge Suits \$21.50**
 —Navy or black. Fancy colored lining. Showing the new ripple back encircled with braid bands.
 —Economy Basement, Lipman, Wolfe & Co.
- Good Serge Coats \$11.25**
 —Navy. High waist line that so many prefer. Well made and of a very good style.
 —Economy Basement, Lipman, Wolfe & Co.
- Velours Dolmans \$23.50**
 —Shown above. But a limited number—so come early for these. Excellent made.
 —Economy Basement, Lipman, Wolfe & Co.
- Wool Poplin Coats \$13.65**
 —Shown in the sketch. As you see, these are made on simple lines that will appeal to mature women. Navy and black.
 —Economy Basement, Lipman, Wolfe & Co.

—This advertisement only hints at the assortments of new garments here—and of the low prices on them. We feel safe in saying that the best values in all Portland are here in this Basement. Investigate!

New Blouses \$3.15, \$3.45, \$5.95

ONE STYLE AS PICTURED ABOVE
 —Our blouse section deserves special attention—and we take this occasion to urge upon you the importance of investigating values here before buying.
 —AT \$5.95 there are models in Georgette like the one shown in the sketch and other styles equally attractive.
 —And the assortment at \$3.15 and \$3.45 will be a revelation to women who expect to pay more for dainty blouses. Come in and be convinced.
 —AT \$3.15—Crepe de chine necks. Prettily embroidered. White, flesh, sunset and maize.
 —Economy Basement, Lipman, Wolfe & Co.

Hundreds of New Trimmed Hats Ready For Saturday Shoppers—\$4.95

—Enthusiasm runs high in the millinery section—and little wonder, for we have absolutely the most wonderful hats at moderate prices to be found anywhere in the city. Make your selections now.
 —This particular line at \$4.95 includes sizes and shapes for all types. Workmanship is of the highest standard. Simple tailored trims make these pleasing to a degree. All are Georgette faced.
 —Economy Basement, Lipman, Wolfe & Co.

New Skirts \$3.65 Up to \$8.45

ONE STYLE PICTURED ABOVE
 —Silk skirts are most essential adjuncts to the Spring wardrobe—but few women would expect to buy them for so little as we are selling these good looking ones for.
 —THE MODEL shown above is of clinging silk poplin, and we have it in all colors.
 —Of good qualities of silk and designed on fashionable lines, our skirts permit of enthusiastic discussion.
 —AT \$4.45—Striped messaline in two styles. Narrow, becoming lines. Pockets.
 —Economy Basement, Lipman, Wolfe & Co.
 —THE LINES are long and straight and narrow. Wide belts and silk fringed pockets.
 —AT \$6.45 to \$8.45—Black chiffon taffeta in several styles. Marvelous values.
 —Economy Basement, Lipman, Wolfe & Co.