

**Lipman Wolfe & Co.**  
Merchandise of U. S. Mkt. Only

Everything For Less!

**Economy Basement Store**

Everything For Cash!

"Where You Spend the Least and Get the Most For It."

# Friday--A Great Sale Of Domestics!

Demonstrating Again the Value to You of Our Cash Only Policy Here



**Wash Satin Camisoles on Sale 79c**

Wonder values these—beautifully made camisoles of dainty flesh colored wash fabrics. Some are prettily embroidered in flower wreaths of pink and blue French knots, finishing with ribbon straps over the shoulders, and hemstitching. Others are in corset cover style, with yokes of lace. All wonderfully special at 79c!

Economy Basement, Lipman, Wolfe & Co.

**Silk Pongee**  
IN A SALE

**70c and \$1.19**

Good weight washable pongee that is wonderfully popular this season for dresses, waists, skirts, etc., and this is a wonderfully good opportunity for you to buy. The quality in both these items is extraordinarily good!

Economy Basement, Lipman, Wolfe & Co.

**All Wool Dress Goods at \$1.75**

1000 Yards on Sale

Think of buying fine all wool dress goods in the newest Spring shades at this very low price! There are French serges, navy blue granite cloth, sand, tan and light gray granite cloth, all wool taffetas in black, Copen, brown, etc., tan Burella cloth, black Melrose, taupe, Copen and gray French serges—and many others—remarkable, indeed, at \$1.75!

Economy Basement, Lipman, Wolfe & Co.

**Nadia Corsets**  
New Models \$1.95

A special showing of new Spring models in these popular corsets. Made of coutil in medium low bust, model with medium length skirts and boned to allow freedom of movement. Finished at top with lace and ribbon. For slight and average figures.

Economy Basement, Lipman, Wolfe & Co.

**Pro-Linoleum Rug Mats—Special 29c**

Size 18x36 inches. 500 of these mats that are so desirable for kitchen, bathroom and hall use. An excellent way to save your linoleum! Many colors and patterns.

Economy Basement, Lipman, Wolfe & Co.

**Hosiery**

39c for women's seamless mercerized lisle stockings in black, white and more than 30 shades. Every pair perfect! All sizes.

69c for women's fashioned silk thread stockings with seamless feet. Black or white—and all sizes. Seconds of very fine silk hose.

40c and 50c for boys' heavy ribbed cotton stockings in fast black, made with reinforced strong wearing heels and toes. Sizes 6 to 8 1/2—40c. Sizes 9 to 11—50c.

**Underwear**

3 for 50c for children's knit, taped waists with garters attached. All sizes.

89c for boys' or girls' knit union suits, with tapes and a double row of buttons. Good quality.

19c for women's fine rib or Swiss ribbed vests. Good quality, very elastic. V or round necks. Sizes 36 to 44.

25c for women's Swiss ribbed vests in V-cut style, sleeveless or with short sleeves. Mercerized tape trimmed. Sizes to 44.

50c for women's Fritite union suits. Sleeveless, knee length styles. Sizes 34 to 44.

Economy Basement, Lipman, Wolfe & Co.

—This sale features items that you could not possibly duplicate at the prices—for many of them were bought under special circumstances and marked in the new low-profit way that is now in effect in our Economy Basement under its Cash Only Policy. Read every item listed—the savings are exceptional!

**81x90-Inch Full Bleached Seamless Sheets \$1.29**

—These come in an excellent weight and the splendid quality, together with the unusually low price, will warrant buying them by the dozen.

**Bleached Pillow Cases 25c**

—For a one day sale—these good weight pillow cases, 42x36—45x36—specially priced.

**Belfast Seamless Sheets \$1.35, \$1.45**

—A splendid, heavy quality—free from dressing. 72x90, \$1.35; 72x99 \$1.45. Friday only.

**Bleached Pillow Cases 32c—35c**

—Even weight and finish—size 42x36, 32c, and 45x36, 35c. There is real economy here.

**36-Inch Outing Flannel 25c**

—Perfect quality—full pieces. Pure white in a medium weight. No limit as to quantity.

**Full Size Cotton Batts 49c**

—Containing the right quantity for a full size comforter. This is another "basement special."

**New Gingham at 29c**

—Smart new plaids and staple patterns in this most wanted fabric. Standard quality. Real value.

**Bleached Middy Twill 12 1/2c Yd.**

—The fabric for a variety of uses—at a very special price for Friday. 36 inches wide.

**58-Inch Mercerized Damask 65c Yard**

—An excellent quality for everyday use—wears and looks well always. Many different patterns.

**Bleached Huck Toweling 15c**

—Soft finish—especially desirable for hand or roller towels. 17 inches wide.

**Hemmed Huck Towels 20c**

—Excellent for hotels and rooming houses—as well as for home use. Closely woven—far below regular.

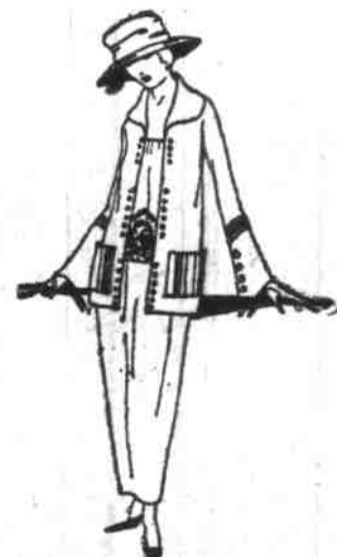
Economy Basement, Lipman, Wolfe & Co.

## A Few Examples Of Savings on Smart Apparel

—You will always find the newest models here at prices away under those you've been paying and are expecting to pay! Why? Because the new Cash Only Policy of the Economy Basement makes it possible to sell for less. Come in and see for yourself—here are a few examples:

**This Lovely Georgette Dress \$19.50**

—Have you seen such a smart dress as this at such a low price for a long time? It is of henna colored (or other colors if you prefer) Georgette, with the waist and skirt panel beaded and embroidered. A wonder frock for the money!



**This Smart Serge Dress \$16.85**

—Of excellent quality French all wool serge, with touches of braiding in the most stylish manner; this is a most remarkable frock at an unusually low price. The deep fringe on the satin sash and the smart plume add much to the style!



**New Spring Hats \$4.95**

—They're mighty smart at the price, too! They're trim and tailored and smart as can be! Some have brim faced with Georgette in bright colors and others have an upper brim of Georgette. There are large hats and small hats and some in medium size. Black—black and colors and the most attractive colors. If sold under any other plan than the new Cash Only one—these hats would cost you much more than \$4.95!

**New Spring Hat Shapes At \$1.69**

—Good looking untrimmed shapes offered at splendid savings here! There are rough straws and smooth brims and straws and many have bright colored underfacings or uprolled brims, while others are all black.

—Shapes that would ordinarily sell for ever so much more than \$1.69—offered in the Economy Store for this special price! Just a ribbon band or bow or a feather fancy added and you'll have a smart, new hat for very little!

Economy Basement, Lipman, Wolfe & Co.

**Suit With Tricolette Vest \$21.50**

—Isn't it smart? The material is blue serge of excellent quality, the vest of gold colored tricolette is embroidered in blue and the tiny silver buttons give it the air of a high priced model!



Economy Basement, Lipman, Wolfe & Co.

**House Dresses Special \$1.49**

—Neat house dresses of good quality percale in light and medium light patterns. Stripes and figures. They are neatly made with waists and contrasting trimming.

Economy Basement, Lipman, Wolfe & Co.

**Boys**

—There are always good savings offered here on desirable wearables for boys! And here are a few instances for Friday and Saturday.

**400 New Spring Suits Special at \$5.95—\$6.50 \$7.65—\$9.75**

—These are suits for boys 7 to 18 years and are made to withstand the hardest kind of service! They're all of excellent wearing fabrics—mixtures, plaids, stripes and checks and they're in military and better styles. Trousers full cut and fully lined, with taped seams.

**Boys' Spring Wash Suits \$1.29**

—Just 250 suits at this special price. Clever little tub suits for boys 2 1/2 to 8 years. They're in Middy, Billy Boy, Junior Norfolk and Oliver styles. The famous "Stonewall" suits at real savings.

**Boys' Corduroy Trousers \$1.95—\$2.25.**

Economy Basement, Lipman, Wolfe & Co.

**Men**

—The Store for Working Men is specializing in the right kind of working clothes at prices that are below those you've been paying. Come in and see for yourself!

**Union Made Overalls "Protector" Brand Special \$1.65**

—For Friday and Saturday, we offer these well known blue bib overalls that are made of splendid quality blue denim at this remarkably special price! Better look to your needs now!

**And These Offers in Every Day Needed Wear for Working Men—**

—Men's Khaki Trousers—Special \$1.95

—Men's Rubber Jacket Coats—Special \$4.45

—Men's Tan Rubberized Jacket Coats—Special \$6.95

Economy Basement, Lipman, Wolfe & Co.

**Lipman Wolfe & Co.**  
Merchandise of Merit Only

*It Is Years Since We Have Offered*

**MEN**

**5000 Pairs Of Sox**

Pure Thread Silks and Silk Plaited: Plain Colors: Fancy; 2-Tones: Clocked: "Seconds"

*New To Our Stocks Today* **65c** *"Firsts" Sell For Double*

—Beginning Friday we offer—in special sale—one of the most amazing purchases of sox for men that we have ever made—at a price much lower than sox of this character are usually sold for.

—There are pure silk sox, full fashioned with heavy reinforced lisle heels and soles in the best plain colors of spring.

—There are fancy striped pure silk sox in a variety of stripings and in a collection of all best colors.

—The sox are all stamped "seconds" but the imperfections are negligible—in fact, in many cases impossible to detect. Take our word for it that the values are the greatest in years.

—There are beautiful two-tone sox in handsome effects and in quality similar to "perfects" here at twice the price.

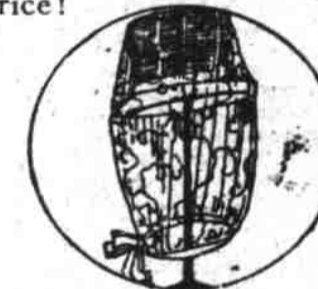
—While the quantity seems large, we expect men to buy these sox by dozen lots. Extra space—extra service—see the Washington St. windows today. Lipman, Wolfe & Co. Just inside the Washington St. entrance.



**Lovely New Veilings—1000 Yards; In a Very Special Sale At 45c**

—This is a season of veilings—not for years have these "fragile weapons of fair woman" enjoyed such vogue, so be quick to take advantage of these at such a special price!

—They are here in infinite variety—in almost every conceivable mesh and design. And this special lot contains—dotted meshes, dainty floral patterns and scroll designs.



—Gypsy mesh with heavy borders—large plain square mesh, fine meshes with heavy borders or scroll designs. Black, taupe, brown, purple, French blue and navy.

—These veilings are very good looking and certainly present value unusual—especially at the outset of long period of prophesied veil popularity. Street Floor, Lipman, Wolfe & Co.

*And A Real Sensation Here On Friday For*

**WOMEN**

**1200 Pairs Of Gloves**

Every Pair New and in Spring 1919 Shades: Fine Flexible Cape; PXM Style: Every Size Included

Worth Very Much More **\$1.45** On Sale Fifth Street Square

—We have just received 1200 pairs of these splendid gloves—bought below actual worth—and placed on sale the same way. Friday and Saturday.

—The gloves are all fresh, clean and new and are of fine soft, flexible cape in absolutely perfect grades.

—The shades are indicative of their desirability—brown, mahogany, taupe, gray, silver and tan. All P X M style.

—\$1.45—as can be readily seen is a marvelously low price for such gloves—and we are certain that the demand tomorrow and Saturday will be enormous. On sale on the Main Floor Bargain Square, Street Floor entrance.



—Friday—the weekly special offer of fine finished playing cards in regular, pinocle and whist sizes at 25c. Aisle table, Lipman, Wolfe & Co. Street Floor.

—THIS STORE USES NO COMPARATIVE PRICES.