

LOGGED-OFF LANDS OF OREGON OFFER BIG OPPORTUNITY

Portland Chamber of Commerce Plans to Clear Land for Returning Soldier.

GOVERNMENT AID IS ASKED

Millions of Acres Open for Settlement by Industrious Men and Women.

The question of the economic conditions which will prevail "after the war," when the vast armies of American soldiers return, has had the careful thought of the Chamber of Commerce.

Government officials state that following each of the wars in which the government has participated, there has been a shifting of population from the crowded centers to "newer" sections of the country.

In the work of reparation, it is realized that one of the chief aims of the country must be to help the returned soldiers to help themselves.

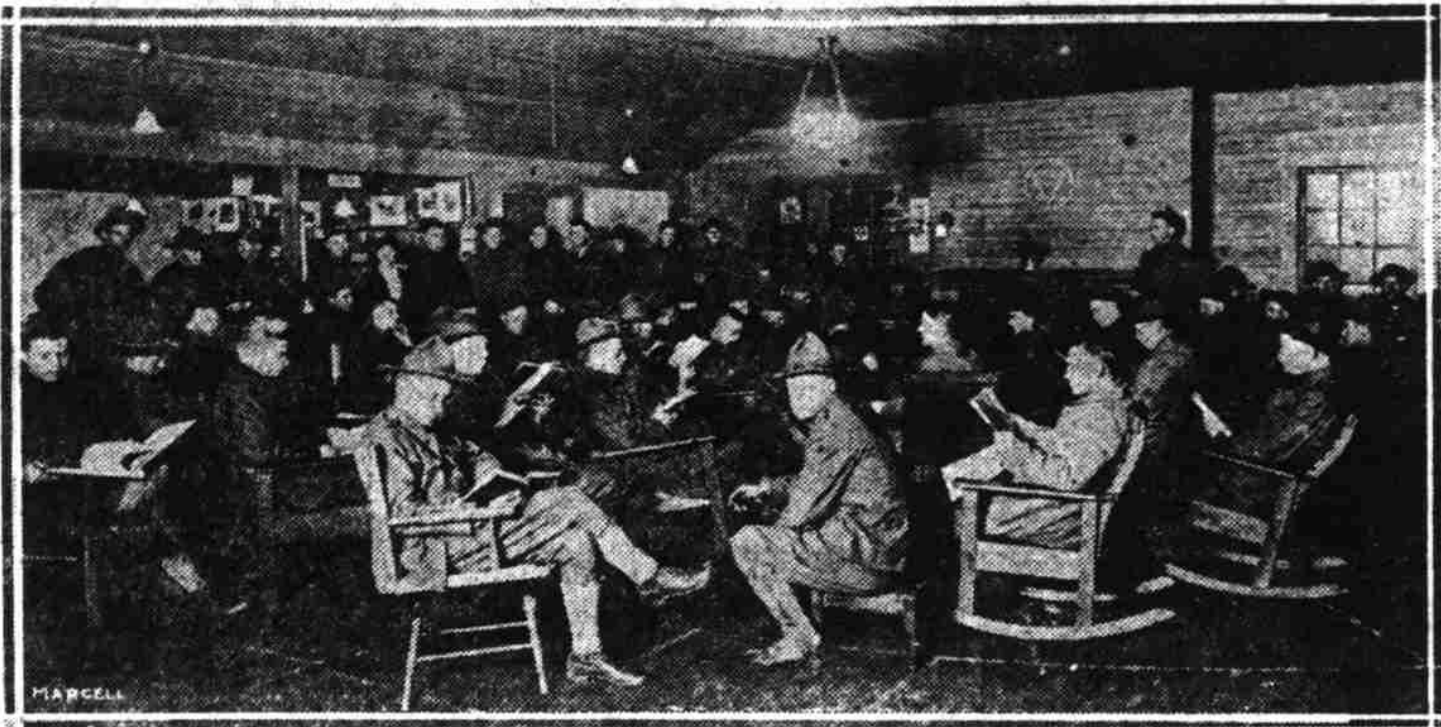
The adoption of a sound land settlement policy by the federal government has had the attention of the Secretary of the Interior, Franklin K. Lane for several years.

Some time ago, with the object in mind of a larger development of the state, the Chamber of Commerce undertook the organization of the State Chamber of Commerce.

In conjunction with the forestry department and Walter H. Graves, an engineer of the United States reclamation service, the Oregon development bureau of the chamber undertook to obtain accurate data in the matter of the logged-off lands of the state.

As will be noted from an examination of the table, Oregon possesses vast areas of rich lands for farming, dairying, cattle raising and horticultural purposes.

SOLDIERS AT VANCOUVER WANT APPLES



Where the apples will be distributed—the Y. M. C. A. at Vancouver barracks.

The boys at Vancouver barracks want to go home for Thanksgiving. They want to see the folks at home. They don't believe any year in history ever furnished so inspiring an opportunity to give thanks.

But they won't get to go—not many of them. They must stay at the camp on duty. Naturally they are restless. They are just red blooded American boys who enlisted to fight.

The problem of the government will be how best to enlist the cooperation of the owners in the plans of the government for the reestablishment of the returning soldiers.

The subject has had the consideration of the federal and state authorities and commercial and development bureaus generally throughout the country.

The Oregon land settlement commission is proceeding rapidly with plans for development, not only of the logged-off lands but also of the vast irrigable sections of Sherman, Wheeler, Gilliam and Morrow counties.

It is safe to say that no section of the United States offers better colonization advantages than does the Pacific Northwest. In addition to the large acreage shown in the compilation presented herewith, there are vast areas of similar lands in Southwestern Washington.

Table with columns: County, Est. Pop., Total Area, Acres Improved, Acres Timbered, Acres Burnt, Acres Logged, Total, % Change. Lists counties like Baker, Benton, Clatsop, Columbia, Coos, Crook, Curry, Douglas, Deschutes, Grant, Harney, Hood River, Jackson, Jefferson, Josephine, Klamath, Lake, Lane, Lincoln, Malheur, Multnomah, Polk, Tillamook, Umatilla, Wasco, Washington, Yamhill.

Mrs. Velva D. Weller, who is camp hostess at the Vancouver barracks, appeals to the farmers of Oregon and southwestern Washington to make Thanksgiving more thankful and happy for the soldiers at Vancouver.

Just as an illustration, vary one of the "Y" secretaries at Vancouver barracks, received 20 boxes of apples at appreciation.

It is fortunate that the logged-off sections of Oregon generally lie in districts favorably situated as to transportation. There have been important extensions of railroads and highway systems in Oregon the past few years.

Washington, Nov. 16.—(U. P.)—Final "clean-up" returns of the recent elections today showed that drys have gained four states, suffrage two and that Republicans elected 21 governors to the Democrats' nine.

SUFFRAGE GAINS TWO STATES, DRYS FOUR IN THE RECENT ELECTIONS

Republican Majority in Senate Is 49 to 47; in House, 239 to 193.

Washington, Nov. 16.—(U. P.)—Final "clean-up" returns of the recent elections today showed that drys have gained four states, suffrage two and that Republicans elected 21 governors to the Democrats' nine.

Table with columns: State, Republican, Democrat, Prohibitionist, Socialist, Total. Lists states like Alaska, Arizona, California, Colorado, Connecticut, Idaho, Iowa, Kansas, Massachusetts, Michigan, Minnesota, Missouri, Montana, Nebraska, Nevada, New Hampshire, New Mexico, North Dakota, Oregon, Pennsylvania, Rhode Island, South Dakota, Vermont, Wisconsin, Wyoming.

S. S. WIIHAAH DAMAGED ON RUN DOWN COAST FROM ASTORIA, OR.

Story of Explosion on S. S. Damaru Reaches San Francisco; Other Marine News.

(San Francisco, Nov. 16.—(I. N. S.)—The shipping board wooden steamer Wihaha became disabled yesterday a little north of Point Arena through the breaking of an exhaust pipe on her run from Astoria.

The four masted British schooner WOODSIDE, which returned during the night of Thursday, collided in the stream the same night with the Japanese freighter Kyo Maru.

The British motor ship Cethana, from Sande for San Francisco with a cargo of wheat, was reported yesterday to have put back to Honolulu with a damaged buoy.

The headline Timesian operated by Harry Knowles and commanded by Captain H. C. Townsend, for many years master of the ship Manga Reva, has brought to port a crew of eight Americans.

Pacific coast mariners have been wondering for a number of weeks if California, generally, is undergoing serious changes as the sound of a whistle buoy has recently warned them that they were approaching Albion river on the Mendocino coast.

Included in the passenger list of the Dutch steamer Kawi, which arrived here yesterday from Batavia and Honolulu was Captain J. B. Larson and several members of the crew of the ship Star of Poland, which was wrecked on the Japanese coast last September.

The Pacific Mail steamers Venezuela and Santa Cruz were indefinitely withdrawn from the Transpacific service yesterday by the shipping board, when final orders came to discharge their cargoes immediately and sail for Puget Sound.

The lightning struck the deckload of gasoline and dynamite which caught fire and quickly spread to the cargo of gunpowder, dynamite and T. N. T. The crew made a wild scramble for the boats, and in spite of Captain Borrensen's efforts it was every man for himself.

Corporal Woods Is Wounded in Hand To Hand Fighting

Dallas, Nov. 16.—Word was received here today that Corporal Laird V. Woods, well known University of Oregon man up to the time of his enlistment, and a son of I. N. Woods, local agent for the Southern Pacific, had been wounded in a hand-to-hand fight with the Hun in October.

Attorney H. C. Eakin of this city has just received a cablegram announcing that his son, Lieutenant Jack E. Eakin, sanitary corps, had arrived safely overseas.

To Enter "V" Work Dallas, Nov. 16.—Rev. W. S. Plovman, former pastor of the United Evangelical Church here, will leave Monday for New York city, from where he will sail for France to take up work as an army Y. M. C. A. secretary.

Heavy Sentence for Disobeying Orders

Camp Meade, Md., Nov. 16.—(I. N. S.)—For disobeying the orders of their superior officers, two heavy sentences have just been passed by courtmartial on Charles Wheeler of Pittsburg, Pa., who was a member of the base hospital corps here, and James W. Livingston of Springfield, Mass., who was attached to the remount depot.

Mashed Machine to Protect Children

New York, Nov. 16.—(I. N. S.)—When a score of children broke from a parade and ran into the path of his airplane in Prospect park, Brooklyn, this afternoon, Lieutenant W. R. Taylor turned his machine into a stone wall to save their lives.

Makes Fords Start Easy

A new Gas Generator, which heats the manifold, vaporizes the gas and makes instant ignition possible has been invented by the Bear Mfg. Co., 120 Bear Bldg., Rock Island, Ill. This simple and inexpensive device does away with hot water mackshits, etc., and gives you a "ready to start" motor in the coldest weather.

Klamath Falls Has Contest for Mayor Following Election

Klamath Falls, Nov. 16.—The first gun in the campaign of a new controversy within the home circle of Klamath Falls was launched at a special meeting of the city council Monday evening.

High School Teams Will Resume Games Tuesday Afternoon

Coaches of the Interscholastic Football league held an informal meeting Saturday afternoon and arranged a schedule for the balance of the season.

Unidentified Man Found Unconscious

Baltimore, Md., Nov. 16.—(I. N. S.)—A man, who, from papers and a government pass found in his pockets, is believed to be a result of the influenza epidemic, was found unconscious at Mercy hospital here this afternoon.

Graduate of O. A. C. Drowned in Canada

Oregon Agricultural College, Corvallis, Nov. 16.—Word has been received of the death of Lawrence Keene, known on the campus as "Larry," one of the most promising graduates of the institution.

Aged Pair Burned To Death on Ranch

Seattle, Nov. 16.—(I. N. S.)—H. F. Holstead and his wife, 78 years old, are dead at Redmond, east of here, and their son-in-law and daughter, H. J. Warfield and his wife, are seriously burned as a result of a fire which destroyed the Warfield ranch home, according to word reaching the sheriff's office here.

200,000 ACRES IN THE YAKIMA VALLEY WILL BE RECLAIMED SOON

Commercial Club Working on Plan to Get Land to Settlers at Nominal Figure.

Yakima, Nov. 16.—In anticipation of an early development of an additional 200,000 acres of land under reclamation in Yakima valley a committee of the Commercial club is this week sending out a letter to the owners of the land asking for their cooperation in handling the colonization in such a way that the land may be furnished to the actual settler at a nominal figure.

Of the 200,000 acres that will be reclaimed in the valley by means of a new highline that is now being surveyed, 134,500 acres lies within Yakima county. Of this amount the railroads own 954 acres, the government 21,850 acres and the state 3620 acres.

The Pacific Mail steamers Venezuela and Santa Cruz were indefinitely withdrawn from the Transpacific service yesterday by the shipping board, when final orders came to discharge their cargoes immediately and sail for Puget Sound.

Beet Growers Paid

Yakima, Nov. 16.—The first beet payment for the 1918 season was made at the factory of the Utah-Idaho Sugar company Friday when \$40,000 was distributed to growers for 4000 tons delivered by them prior to November 1. The tonnage was taken from approximately 240 acres and the company has yet to receive the tonnage from 3000 additional acres and will handle during the season about 60,000 tons of beets.

"Business as Usual"

Yakima, Nov. 16.—There was "business as usual" in the stores of the city Saturday, the health department being fully determined that there is no further alarm concerning spread of influenza. Bakers of the city announce today they will serve their patrons with white bread.

Seattle Interests Take Over Two of Albany's Theatres

Albany, Nov. 16.—The Rolfe theatre, owned by Al Sternberg, prominent merchant and one of the pioneers in the movie here, has been sold to C. F. Hill and his associates, all of Seattle. The same interests recently took over the Globe theatre and hence both houses will be under the same management.

It's Time to Be Gay

again, and you feel it in the atmosphere of this famous old hotel. Dining is a cheerful thing in the big dining-rooms, and there's dancing every night but Sunday to the music of Prasp's Novelty Orchestra.

The Portland Hotel

Under Management of Richard W. Childs. Take Your Sunday Dinner at the Portland—Excellent Cooking—Special Music. Dinner, \$1.25 Also a la carte service

acres being in holdings of 160 acres and less and 45,500 in larger tracts.

Yakima, Nov. 16.—The first beet payment for the 1918 season was made at the factory of the Utah-Idaho Sugar company Friday when \$40,000 was distributed to growers for 4000 tons delivered by them prior to November 1.

Yakima, Nov. 16.—There was "business as usual" in the stores of the city Saturday, the health department being fully determined that there is no further alarm concerning spread of influenza.

Albany, Nov. 16.—The Rolfe theatre, owned by Al Sternberg, prominent merchant and one of the pioneers in the movie here, has been sold to C. F. Hill and his associates, all of Seattle.

Of the 200,000 acres that will be reclaimed in the valley by means of a new highline that is now being surveyed, 134,500 acres lies within Yakima county. Of this amount the railroads own 954 acres, the government 21,850 acres and the state 3620 acres.

It's Time to Be Gay

again, and you feel it in the atmosphere of this famous old hotel. Dining is a cheerful thing in the big dining-rooms, and there's dancing every night but Sunday to the music of Prasp's Novelty Orchestra.

The Portland Hotel

Under Management of Richard W. Childs. Take Your Sunday Dinner at the Portland—Excellent Cooking—Special Music. Dinner, \$1.25 Also a la carte service

WOODARD, CLARKE & CO. PHONES: MARSHALL 4700 - A 6171 Umbrellas Of Exceptional Value NEW SHAPES, NEW COLORS, NEW DESIGNS Priced at \$6.50 to \$18.00 You will find a most extensive stock in Khaki, Taupe, Brown, Purple, Green, Navy, Red, Black and Novelty Best Grade Silk—fast colors. Fancy Baccalite and Wood Handles, with Leather and Silk Loops, Baccalite Rings and Crooks. Fitted with fancy ferrules and rib tips to match, making attractive combinations. This Week Special Ladies' Silk Umbrellas in Taupe, Brown, Khaki, Blue, Green and Purple, light ribbed paragon frame, fancy handles to match. At \$4.50 We carry the best Rainproof Umbrellas for both men and women to be found in the city. At \$1.50 ALDER STREET AT WEST PARK

High School Teams Will Resume Games Tuesday Afternoon Coaches of the Interscholastic Football league held an informal meeting Saturday afternoon and arranged a schedule for the balance of the season. The league has been divided into two divisions of four teams each. Division 1 is composed of Washington, Lincoln, Commerce and Hill and Division 2 of Franklin, Jefferson, James J. and Columbia. The first game of the schedule will be played Tuesday afternoon between Lincoln and Commerce. The last game of the season will be staged December 10. The board of directors of the league will ratify the schedule at a meeting Monday. The schedule follows: Nov. 19—Lincoln vs. Commerce. Nov. 20—Washington vs. Hill. Nov. 21—Franklin vs. James John. Nov. 22—Jefferson vs. Columbia. Nov. 23—Washington vs. Commerce. Nov. 24—Franklin vs. Columbia. Nov. 25—Lincoln vs. James John. Dec. 2—Hill vs. Commerce. Dec. 4—Franklin vs. Columbia. Dec. 5—Lincoln vs. James John. Dec. 6—Jefferson vs. James John. Dec. 10—Lincoln vs. Hill. Taxes Are Lowered Klamath Falls, Nov. 16.—The first sign of a reduction in price on anything in Klamath county for some time was signified at a special meeting of the city council when the budget for the coming year was fixed at 23.3 mills, or a reduction of 3.2 mills over the budget for the year before. The budget is based on a \$3,000,000 valuation, and will produce \$66,900 in funds. Cured His Daughter's Fits A well known resident of Milwaukee, Wis., reports that his daughter has been completely cured of Epilepsy by a prescription secured from a friend. This girl had suffered as though on a hundred times in a day and seemed beyond all hope of relief. Her father says he is so grateful for her recovery that he will mail a bottle of the High River medicine in plain sealed wrapper, free to any sufferer who will send him a name, address or relative, suffer, write R. P. N. Lepso, 44 Island ave., Milwaukee, Wis., and get a free bottle.—Ad. The Famous Castle Gate Coal ECONOMY FUEL CO. MINE AGENTS E. 214 - B-2343 31 Grand.

The Week of Our Formal Opening During this week we will have on display many exclusive, individual garments for women. This shop is new; its appointments are in good taste, and the garments it offers are of the latest production. You will find this a delightfully pleasant place in which to select your Suits, Frocks, Coats and Furs. Although quality, taste and exclusiveness are characteristic of the garments, the prices are quite moderate. We will be pleased to have you call and see our displays. Suits \$22.50 to \$75.00 Frocks \$17.50 to \$75.00 Coats \$22.50 to \$100.00 Furs \$20.00 to \$125.00 OPENING WEEK In order to acquaint the women of Portland with this shop, we will, during this week, give these discounts from our advertised prices: SUITS One-Third Off FROCKS One-Fourth Off Take Advantage! The Grand Exclusive Women's Apparel In the Morgan Building 348 Washington Street "The Shop Beautiful"