

PORTLAND, OREGON, SUNDAY MORNING, JULY 21, 1918.

## EARLY ACTION IS URGED ON QUESTION OF HOSPITAL FUND

Dr. K. A. J. Mackenzie Suggests  
State and County Authorities  
Get Their Plans Under Way.

WOUNDED TO BE CARED FOR

Plans of War Department Presup-  
pose Location of "Reconstruc-  
tion" Hospital for Portland.

Portland ranks today as the medical  
center of the Pacific Coast. The honor  
accrues through the presence here of the  
University of Oregon medical school. For  
long years the school was housed in an  
unfit structure in Twenty-third  
street. It will begin the next year in a  
commodious and well-equipped structure  
set on Marquam hill in South Portland,  
where its tangible promise of healing  
and the education of healers may be  
seen for miles.

While the initial structure on Mar-  
quam hill will meet the needs of the  
medical school for a number of years,  
it is intended to be but one of a group  
comprising a medical and hospital cen-  
ter which for all time will assure Port-  
land continuance of its present Pacific  
Coast leadership.

Hospital to Be Erected

Of the lads who marched so bravely  
away from Oregon, some of them will  
be returning sorely wounded. It is to  
be the policy of the government to re-  
patriate soldiers while it "reconstructs"  
them. In other words, it is the intent  
to bring back to Oregon the Oregon sol-  
diers wounded in battle. This presup-  
poses a "reconstruction" hospital.  
Whether it will be built by the county  
and devoted to county patients when  
its reconstruction uses are past, whether  
it will be built by the state, or by  
the county and state, and whether it  
will be built by government aid or di-  
rectly through government appropria-  
tion, are unsettled questions. But it is  
unofficially assumed that Portland and  
Oregon gave evidence to the government  
that a beginning in the providing of  
reconstruction hospital facilities had been  
made, government cooperation in com-  
pleting and equipping the facilities  
would be speedily forthcoming and the  
whole would be turned over for the  
benefit of the people of the state after  
the war.

Early Action Is Urged

Dr. K. A. J. Mackenzie, dean of the  
medical school, urges that action be  
taken by the state board of health  
and the county commissioners in the  
direction of appropriation for a recon-  
struction and general hospital as speedily  
as possible. "If we do not act im-  
mediately," he says, "the demand will  
find us unprepared and embarrassed be-  
cause of our inability to perform patri-  
otic service."

Dr. Mackenzie is in a peculiar po-  
sition to bring government and state to-  
gether, for he is a member of the medi-  
cal advisory commission of the National  
Council of Defense, governor's aid and  
dean of the medical school.

The establishing of a reconstruction  
hospital here involves certain provision  
in connection with it for retraining of  
wounded men. This does not mean a  
complete retraining school, but the in-  
stallation of the retraining apparatus de-  
signed to aid men to learn re-use of their  
muscles or to learn new ways of caring  
for themselves after operations that  
have resulted in the removal of arms  
or legs.

The medical school is unusually ur-  
gent at this time in its appeal for the  
enrollment of students, each student  
enrolling also enlists for army service if  
needed. Enlistment of older physicians  
has depleted many communities, espe-  
cially smaller towns, and it is necessary  
to train men to take their places. Many  
instructors have been taken from medi-  
cal education. The places of these must  
be filled.

## Oregon Industries To Go on Display

A. G. Clark of Chamber of Commerce Is  
Arranging For Exhibit At Time of  
Grand Encampment, August 19 To 23.

A great exposition of Oregon's in-  
dustries and manufactures is to be a  
feature of the G. A. R. encampment  
to be held in Portland from August  
19 to 23, according to the plans which  
are being arranged by A. G. Clark,  
manager of the home industries bureau  
of the chamber of commerce. An en-  
ergetic effort will be made to show to  
the thousands of visitors, as well as to  
Portland's best residents, just what the  
city and the state are doing.

"There is a disposition on the part  
of manufacturers to say that they are  
too busy to take part in such an event,"  
Mr. Clark said today. "I have asked  
them if they would be busy to build for  
the future upon the present foundation.  
They are doing that very thing in their  
own homes every day and is this com-  
munity movement not mighty important  
to the future of the city and the state?"

## Sunday School Calls Men From Hotels

The "Minute Men" is an organized  
class connected with the Sunday school  
in a large eastern city, and aside  
from the regular activities followed by  
the general run of such organizations,  
a meeting is held each Saturday evening.  
As many of the men as possible are  
induced to attend this service,  
lasting perhaps 10 minutes. The men  
then, separately, going in an envelope  
addressed to the man, then placed in  
his box. These invitations are neatly  
printed cards, and the committee signs  
each personally. The fact that the card  
is found in the small box is said to  
please the one receiving it. It is  
reported that many a man stopping  
in the city over Sunday finds his way  
to the church.

## Pre Inventory Sale

REMARKABLE SPECIALS ON NEW



**PHILIPPINE**  
Hand-Embroidered  
**NIGHT GOWNS**  
and **CHEMISE**

At \$2.25—

New hand-embroidered NIGHT GOWNS and ENVELOPE CHEMISE that have been forced into this clean-up sale, regardless of their late arrival. GOWNS of lingerie cloth in the most charming round and V-neck styles. Scalloped sleeves and neck. CHEMISE ribbon drawn, with embroidered scalloped edge at neck, arms and drawers. Pre-Inventory Special—\$2.25.

At \$2.45—GOWNS and ENVELOPE CHEMISE of fine lingerie cloth exquisitely hand scalloped. French embroidery and eyelet designs embellish the front. Pre-Inventory Special—\$2.45.

Other GOWNS and CHEMISE—Special \$2.95—\$3.95—\$12.50

—Fourth Floor, Lipman, Wolfe & Co.

Pre-Inventory—Odds and Ends of  
**CORSETS—\$3.35**

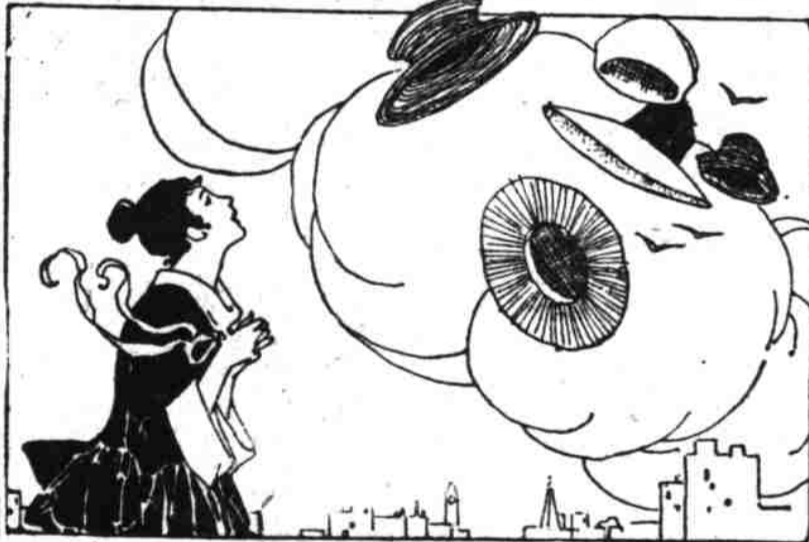
—Such splendid, well-known makes as Ettoile du France, Nemo, Modart front-lace, C. B., La Spirite, and Smart Set. A good assortment of sizes—but not all sizes in each model. A splendid variety of styles to choose from. Pre-Inventory Special \$3.35.

—Fourth Floor, Lipman, Wolfe & Co.

Pre-Inventory Sale of Women's Pure  
**Thread SILK STOCKINGS**

Smart striped stockings in such shades as tan, grey, blue, and black. 98c. Only a few of each kind, so come early. These are factory imperfects, but the imperfections are so slight that they do not in the least impair their looks or wearing qualities. Pre-Inventory Special—98c a pair.

—Main Floor, Lipman, Wolfe & Co.



**TRIMMED AND UNTRIMMED  
HATS—MONDAY  
AT HALF PRICE**

—Sailors and Sports Hats in lisere, leghorn, and rough straws, in the smartest and most becoming styles. Come at store-opening time and choose yours.

—Untrimmed shapes—all of them that we have in stock—One Half Off!

—Third Floor, Lipman, Wolfe & Co.

Odd Pairs of Scrim and Lace  
**CURTAINS AT HALF PRICE**

—Curtains that usually sell for from \$2.50 to \$15.00 will go on sale Monday at just half. A golden opportunity for the homekeeper; 2 1/2 yards long; white, cream and ecru.

**CRETONNE AND CHINTZ—43c Yard**  
—Handsome patterns in dark and light effects. Pre-Inventory special, 43c yard.

Monday Only—Famous  
**Betty Bright  
Aluminum 12-quart  
Preserving  
KETTLES**



Limit of 2 to Each Buyer  
—There are 250 of them in the lot, so we decided to limit the number to 2 to each customer, and accept no phone or C. O. D. orders. All with heavy rolled edge and riveted bail handle. An extraordinary sale at \$1.49.

—Basement, Lipman, Wolfe & Co.

## Pre Inventory Sale

A Six-Day Event, before we close our Books for the Spring Season—Buy your supplies from present stocks and conserve the Nation's Resources. No matter how good stock-keepers we are, odds and ends are bound to accumulate, and these must go irrespective of Cost or Conditions. When you supply your present and future needs from this Pre-Inventory Sale, your requirements make smaller draught on the National resources and you SAVE MONEY at the same time. Every day this week we shall hold IMPORTANT SALES throughout the Store—Here are the details and prices for tomorrow's opening sales. No approbation or phone orders during this sale.

**Lipman Wolfe & Co**  
Merchandise of Merit Only



A Wonderful PRE-INVENTORY SALE of Women's  
**Cotton and Linen DRESSES**

Think of it! The newest and Smartest Summer Frocks must go out in this PRE-INVENTORY SALE at a sharply reduced price. Think of it—and be sure to take advantage of it, too—for we are willing to wager that these are the prettiest Dresses in town at \$12.85. All white Frocks, and the cleverest colored Frocks for your choosing on Monday. Be Here Early!

**\$12.85**

**Sleeveless Velvet Jackets—Pre-Inventory Special—\$14.85**  
—Greatly underpriced for Monday's selling—and absolutely the smartest of all the season's showing—are these velvet jackets. Some slip-over style. Braid bound, belted and pocketed. Black, plum and garnet.

**Silk Skirts for Pre-Inventory—\$10.50, \$12.50, \$13.50**  
—It seemed unfair to include such smart new skirts as these in the Pre-Inventory Sales, but we decided to dispose of them regardless of regular prices. Stunning plaids and stripes in the latest effects, and the most wonderful quality.

**CREPE DE CHINE BLOUSES**  
—Clever Crepe de Chine Blouses in a number of different models. Tucked, pleated, and hemstitched effects. Some with collars of silk brocade. In flesh, white, and maize. Pre-Inventory Special—\$2.75. MONDAY ONLY.

**WOOL SWEATERS—CLEAN-UP**  
—Ever so many styles in slip-on and coat SWEATERS, worth double and more than double this Pre-Inventory Price. A variety of colors.

**SILK JERSEY SWEATER COATS—Regularly \$10 to \$31.50—Monday, HALF PRICE.**  
—Third Floor, Lipman, Wolfe & Co.

HERE IS GOOD NEWS FOR YOU—IF YOU WEAR SIZE 36

100 ASSORTED  
**House Dresses**

In Size 36  
**CLEAN-UP PRICE**

**\$1.25**

—If you are the right size to wear a size 36 House Dress, you can take advantage of these remarkable savings to-morrow. Percal and gingham house frocks in a variety of colorings, plaids, etc., in clever straight styles. Exceptional values for those who can wear them!

—Fourth Floor, Lipman, Wolfe & Co.

**Specials for BABY**  
—Cotton shirts, sizes 1 to 5—39c.  
—Short dresses, sizes 6 months to 2 years—99c to 98c.  
—Babies' hose, sizes 4 and 4 1/2—35c.  
—Babies' blankets, size 30x40—59c.  
—Fourth Floor, Lipman, Wolfe & Co.

—In compliance with the new Government ruling, this store will make ONLY ONE DELIVERY A DAY.

Odds and Ends of  
**Beaded Medallions,  
Drops and Buckles  
At HALF PRICE**

—A variety of odd pieces—such as drops, buckles, and medallions, that will make handsome hat and dress trimmings, and bag motifs. Regularly 20c to \$7.50—Pre-Inventory 10c to \$3.75.

Pre-Inventory Sale of  
**Women's Neckwear**

—Collars, collar and cuff sets, 79c vests, etc., in the smartest styles—Pre-Inventory Sale—79c.  
—Main Floor, Lipman, Wolfe & Co.

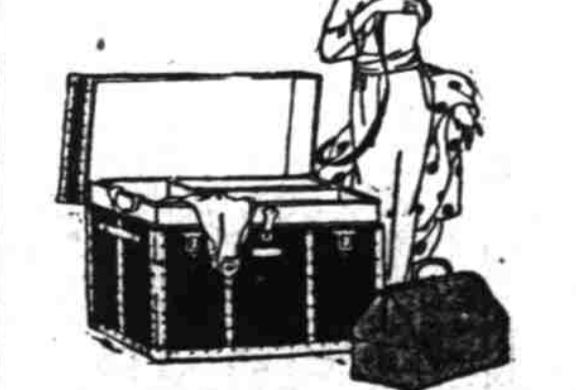


**Glass, China, and Semi-Porcelain**

**BERRY SETS**  
PRE-INVENTORY SALE  
**95c—\$1.19—\$1.45**

—Monday only—Colonial glass, hand-decorated china, and handsome semi-porcelain berry sets at these special prices. No phone or C. O. D. orders.  
—Sixth Floor, Lipman, Wolfe & Co.

Pre-Inventory



Sale of Novelties in  
**BAGGAGE**

AT AMAZING PRICE REDUCTIONS

Three 26-inch Hat Trunks, with tray, canvas covered; may be used for many purposes—\$3.95.

A group containing two Bureau Trunks, with drawers and several other styles; reduced to \$9.85.

Two very fine Leather Hand Bags, of real walrus, hand sewed, and reduced to \$12.50.

Several small leather pieces, including Cabin Cases, Overnight Bags, etc. For clearance, your choice \$2.65.

A Bed Box and a Clothes Cabinet; also an elaborate Hat Trunk, are reduced to \$6.45.  
—Mezzanine Floor, Lipman, Wolfe & Co.

## Pre Inventory Sale

MONDAY—AN EXTRAORDINARY SALE OF

**SILKS**  
AT HALF PRICE

—Pre-Inventory brings this remarkable sale of SILKS, in patterns and colorings that are as smart as smart can be. They are odd lines that are left over from this season's selling—that must be cleared away.

—Satin, Crepe de Chine, Printed Crepes, Sport Silks, and Jersey Silks.  
—Second Floor, Lipman, Wolfe & Co.

Pre-Inventory Sale of All-Wool  
**CREAM SERGE—\$1.95**

—Odd pieces of 48, 50 and 54 inch serges in various weaves—FRENCH SERGE, DIAGONALS, STORM SERGE, WHIPCORDS, CHEVIOT SERGE, ETC., IN MEDIUM AND HEAVY WEIGHT. Pre-Inventory special—\$1.95. —Second Floor, Lipman, Wolfe & Co.

**LINENS**

AND DOMESTICS

At Prices That Are Half and One-Third of What They Will Be This Fall!

**WHITE OUTING FLANNEL—28c**

—You will pay nearly double this PRE-INVENTORY price for this splendid quality of flannel in a few months if the market predictions are true. Best buy all you need now for next Winter's use—Monday only. No phone orders.

**NOVELTY WHITE GOODS—19c**

—36-inch tub weaves that will develop into the smartest waists and frocks! White only. Pre-Inventory Special—19c yard.

**NAINSOOK—10-YARD BOLT—\$2.19**

—Extra fine quality orange blossom nainsook, 36 inches wide. In order to make the quantity we have on hand go as far as possible, we have limited the sale to 10 yards to a customer. No phone orders.

**LONG CLOTH—12-YARD BOLT—\$2.35**

—Extra fine quality Longcloth, free from dressing, and in a beautiful finish. Only 12 yards to a customer. No phone orders.

**Full Size Crochet Bed Spreads—\$2.95**

—Pre-Inventory Special. Splendid weight and finish spreads in good assortment of patterns. Extra sizes. Only two to a customer. No phone orders.

**81x99-inch BLEACHED SHEETS—\$1.55**

—"Colonial Brand"—the best wearing sheet we have ever seen. In splendid soft finish, free from dressing. Torn before hemming. Only four to a customer. No phone orders.

**BLEACHED BATH TOWELS—25c**

—Pre-Inventory sale of good generous size towels that could not be purchased wholesale for 25c at present! We have a good quantity, but come early to choose yours!  
—Second Floor, Lipman, Wolfe & Co.

Pre-Inventory Sale of

**MEN'S  
Shedaker  
Union Suits**



—Athletic style Union Suits of fine long-cloth, checked nainsook, and mercerized materials. Some combined with fiber silk, and silk mull. Be wise—lay in next year's supply, for THESE SUITS ARE WORTH MORE THAN TWICE THIS PRE-INVENTORY SALE PRICE.

**POROS MESH UNION SUITS**

—Short sleeve, ankle length, in all sizes. Splendid hot weather garments. Pre-Inventory Special—\$1.19.

**LISLE UNION SUITS**

—Fine lisle and cotton garments with short sleeve and ankle length legs. All sizes. Pre-Inventory Special—\$1.29.

**GAUZE UNION SUITS**

—Seconds—but of a quality that you couldn't buy wholesale today for this Pre-Inventory Sale Price.

**SHIRTS AND DRAWERS—GARMENT**

—The famous DELPARK make—athletic style. 60c Pre-Inventory Special—60c.  
—Main Floor, Just inside the Washington St. Entrance.

FOR COOLNESS AND COMFORT'S SAKE  
A PRE-INVENTORY SALE OF

**ELECTRIC  
FANS—\$7.15**

—Wouldn't you like to have one? There are only a few left, and we've marked them for Monday's Pre-Inventory Sale—\$7.15. Ask to see them demonstrated at the Electrical Corner.  
—Main Floor, Lipman, Wolfe & Co.

## Pre Inventory Sale