

N. Y. FRUIT OWNS WORLD'S LARGEST SAILING FEET

France and Canada Steamship Company Acquires 50,000 Tons New Schooner Bottoms.

MANY BIG SAILERS INCLUDED Emergency Fleet Corporation Has 400 Wooden and 400 Steel Ships Under Contract.

San Francisco, Dec. 1.—(I. N. S.)—The France and Canada Steamship company of New York has bought and now controls the largest sailing schooner fleet in the world.

Wyoming, 1950 tons dead weight capacity, the largest schooner afloat; Edward J. Lawrence, 6025 tons; Jane Palmer, 4707 tons; Ruth Merrill, 4504 tons; Singleton Palmer, 4288 tons; Dorothy Palmer, 4073 tons; Governor Brooks, 3942 tons; Cory F. Cressy, 3748 tons; Oakley C. Curtis, 3561 tons; Martha P. Small, 3267 tons; Malcolm Baxter, Jr., 3000 tons; Governor, 2800 tons; Evelyn W. Hinkley, 1047 tons; and the Camilla May Page 1035 tons.

6,000,000 Tonnage Under Way Vessels contracted for and building for the emergency fleet corporation of the shipping board, according to a statement made by Admiral P. T. Bowles recently, include 400 wooden ships of from 3500 to 4000 tons and 400 steel ships with an aggregate dead weight tonnage of 3,000,000 tons, also 400 vessels commanded, having a total dead weight tonnage of 3,000,000 tons.

Santa Alicia Brings Lead The Grace steamer Santa Alicia, with the Chilean schooner W. J. Pirie in tow arrived here Thursday night from Antofagasta.

The Holland-American line steamer Yacht, from an American port, put in here Friday morning to replenish bunkers.

GUARDING THE SHIPYARDS

Some Builders See No Need of Extra Protection

In the opinion of some shipbuilders in this district there is no need for extra guarding of the yards, while others hold the view that there is, taking the position that the government property, the government should see that they are properly guarded.

CRANE FALLS INTO BAY

Forty Mile Gale Does Damage to Hammond Plant at Eureka.

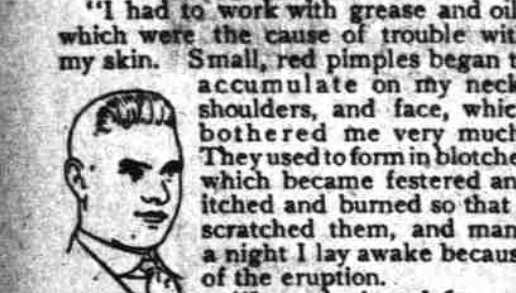
Eureka, Cal., Dec. 1.—(U. P.)—Going adrift in a 40 mile gale during the night, the big electric crane at the Hammond shipyards raved down its rails and toppled into Humboldt bay.

Mariposa Breaking Up

Seattle, Wash., Dec. 1.—(I. N. S.)—Storms continually at the scene of the wreck of the Mariposa are fast breaking the vessel up, according to advice received here today by officers of the Alaska Steamship company from E. W. Raymond, port engineer of the steamship company.

TOUGH PAPERS ON FACE, NECK And Shoulders. Formed In Blotches. Burned So Scratched. Cuticura Healed. Cost \$1.00.

"I had to work with grease and oil which were the cause of trouble with my skin. Small, red pimples began to accumulate on my neck, shoulders, and face, which were very much scratched and itched and burned so that I lay awake because of the eruption."



"I was bothered for several months until I heard of Cuticura Soap and Ointment. By the time I had used one box of Cuticura Ointment and two cakes of Cuticura Soap I was healed. (Signed) Raymond Moyer, 1514 Porter St., Portland, Ore., March 24, 1917. Keep your skin clear by daily use of Cuticura Soap and Ointment for every-day toilet purposes. Nothing better. Free Sample Each by Return Mail address Postpaid—Cuticura, Dept. E, Boston." Sold everywhere. Soap 25c. Ointment 25 and 50c.

SHIPPING NOTES

The following charter is reported: Schooner Henry Wilson, lumber from Puget Sound, to Sydney, 160 shillings.

The Grace steamer Santa Cruz, chartered to the Pacific Mail, has returned from her first round voyage to the East Indies.

The Onitite, the second of the Mahony auxiliary schooners being built by the emergency fleet corporation, was launched successfully.

The E. Liesbe & Co. schooner Herman is scheduled to sail for San Francisco Friday afternoon from here.

The Schem, formerly a German steamer, is being converted into a passenger and cargo ship.

The French schooner Moana, Captain Goss, formerly with the Pacific Mail, arrived at San Francisco Friday from Papete with copra for Williams, Diamond & Co.

The Grace steamer Santa Alicia, with the Chilean schooner W. J. Pirie in tow arrived here Thursday night from Antofagasta.

Notice to Mariners

The following affects the aids to navigation in the Seventeenth Lighthouse district: The buoy number 20 at the entrance to the channel, between the outer and inner lights, vessels should pass this point about 30 yards to northward of the line of the Entrance Range light.

Beaver Salvage Delayed

Eureka, Dec. 1.—(U. P.)—It was still too rough today for the tug Priscilla to resume her work in connection with salvaging the boilers of the steamer Bear.

Burgard Is Reappointed

Mayor Baker has reappointed John H. Burgard, member of the committee of public docks, which will serve for five years, succeeding himself.

News of the Port

Wapama, American steamer, from San Francisco, arrived December 1. Departure, December 1. John Poulson, American steamer, for San Francisco, arrived December 1.

Weather at River's Mouth North end at 5 p. m. Wind, west, 32 miles; weather cloudy, sea, moderate.

Tides at Astoria Monday Sun rises, 7:35 a. m.; sun sets, 4:27 p. m. High water, 10:01 a. m., 4.30 p. m. Low water, 10:01 a. m., 4.20 p. m.

Daily River Readings

Table with columns for Station, Date, and Readings.

AT NEIGHBORING PORTS

Seattle, Dec. 1.—Arrived: 11:30 a. m., steamer W. F. Herrin from San Francisco; 1:30 p. m., steamer W. F. Herrin from San Francisco; 3:30 p. m., steamer W. F. Herrin from San Francisco.

WEATHER FORECAST

Portland and vicinity—Sunday rain, strong southeast; Monday, rain, strong southeast.

OBSERVATIONS

Table with columns for Station, Date, and Observations.

GRADUATES OF FREE BIBLE SCHOOL MAY BE PLACED ON SHIPS

Plans Are Being Made to Have Craft Built by Shipping Board Manned by Local Men.

Facilities Now Big Need Coal Bunkers Required to Make Portland Accessible to Vessels Seeking Cargoes.

The appeal for community loyalty in providing port facilities and in building up shipping made by H. L. Corbett, president of the Chamber of Commerce, before the Realty board Friday, has awakened much comment.

Mr. Corbett calls attention to this in the following letter to Arthur R. Williams, instructor in the local school: "I have recently taken up with the shipping board officials here the plan of placing the graduates from our schools on ships of the shipping board at the earliest possible date."

Chamber Community's Voice You ask, what is the Chamber of Commerce doing to help? The first place, what is the Chamber of Commerce? It is the composite voice of the community. It is you, all of us.

When we say that Portland has lost shipping we must differentiate between tramps and regular offshore lines. The latter are the ones who will port to our wharves, and it is these who have never had liners because we have never had the conditions warranting the service.

Harbor Entrance Gated This condition brought the campaign for harbor entrance gates to a head. It has just been completed and the gates will be in operation by the end of the year.

Overseas tonnage constitutes probably 85 per cent of the work. The railroads are not the only ones who are interested in this and I believe the railroads are not the only ones who are interested in this.

Dec. 1.—(I. N. S.)—E. D. Herr, in charge of the merchandise department of W. R. Grace & Co., will leave for San Francisco to assume charge of the company's port department in that city.

WEATHER FORECAST Portland and vicinity—Sunday rain, strong southeast; Monday, rain, strong southeast.

WEATHER FORECAST Portland and vicinity—Sunday rain, strong southeast; Monday, rain, strong southeast.

OBSERVATIONS Portland and vicinity—Sunday rain, strong southeast; Monday, rain, strong southeast.

OBSERVATIONS Portland and vicinity—Sunday rain, strong southeast; Monday, rain, strong southeast.

OBSERVATIONS Portland and vicinity—Sunday rain, strong southeast; Monday, rain, strong southeast.

OBSERVATIONS Portland and vicinity—Sunday rain, strong southeast; Monday, rain, strong southeast.

Bible Is the Best Seller Of Them All

"A NEVER-CEASING world wonder," says Girard in his "Philadelphia Ledger 'Topics of the Town.'" It is the stupendous sale of the Bible.

Mr. Girard calls attention to this in the following letter to Arthur R. Williams, instructor in the local school: "I have recently taken up with the shipping board officials here the plan of placing the graduates from our schools on ships of the shipping board at the earliest possible date."

Chamber Community's Voice You ask, what is the Chamber of Commerce doing to help? The first place, what is the Chamber of Commerce? It is the composite voice of the community. It is you, all of us.

When we say that Portland has lost shipping we must differentiate between tramps and regular offshore lines. The latter are the ones who will port to our wharves, and it is these who have never had liners because we have never had the conditions warranting the service.

Harbor Entrance Gated This condition brought the campaign for harbor entrance gates to a head. It has just been completed and the gates will be in operation by the end of the year.

Overseas tonnage constitutes probably 85 per cent of the work. The railroads are not the only ones who are interested in this and I believe the railroads are not the only ones who are interested in this.

Dec. 1.—(I. N. S.)—E. D. Herr, in charge of the merchandise department of W. R. Grace & Co., will leave for San Francisco to assume charge of the company's port department in that city.

WEATHER FORECAST Portland and vicinity—Sunday rain, strong southeast; Monday, rain, strong southeast.

OBSERVATIONS Portland and vicinity—Sunday rain, strong southeast; Monday, rain, strong southeast.

OBSERVATIONS Portland and vicinity—Sunday rain, strong southeast; Monday, rain, strong southeast.

OBSERVATIONS Portland and vicinity—Sunday rain, strong southeast; Monday, rain, strong southeast.

OBSERVATIONS Portland and vicinity—Sunday rain, strong southeast; Monday, rain, strong southeast.

OBSERVATIONS Portland and vicinity—Sunday rain, strong southeast; Monday, rain, strong southeast.

OBSERVATIONS Portland and vicinity—Sunday rain, strong southeast; Monday, rain, strong southeast.

OBSERVATIONS Portland and vicinity—Sunday rain, strong southeast; Monday, rain, strong southeast.

How to Keep Cool in Face Of War's Fire

Do you remember the thrill with which you first read the "Honey Tree" by the French writer, who solved the whole problem of "sweetness" for a castaway family, who preserved the bee colony by forming a new beehive from a castaway pot?

While contemplating a decreasing sugar supply, would you not like to find a "honey tree" since honey has a focus value about four parts sugar to one part water, and therefore has been recommended by the Food Commission as one of the substitutes for sugar?

Are you aware that Oregon is particularly adapted to bee-keeping on the house-tops, in the backyard, the side veranda, or in the rose-garden, and that it is profitable industry? Why? Because the number and variety of fruits and flowers, truck gardens, and a mild climate are all conducive to honey production as well as fine flavor.

Some commercial uses of honey and by-products of the hive are wax, which is used in the manufacture of candles, and in certain soaps and dentifrice. Certain diets require honey instead of sugar, and the complete sugar of today uses a natural honey fish-bait.

The municipal reference library has obtained a copy of the proceedings of the National City Managers' association for 1916, which may be consulted in this department, 213 City hall.

From An Uncle to His Niece "Uncle Bill's Letters to His Niece" by Ray Brown, (British Publishing) company, New York, \$1.00 net, are a collection of letters which are full of his adorable relative, and old uncle hits straight for the mark, but with delicious humor and bright moral.

"Anaemia—Lack of Iron—Is Greatest Curse To Health and Beauty of American Women" Says Dr. Ferdinand King, New York Physician and Medical Author

Any Woman Who Tires Easily, is Nervous or Irritable, or Looks Pale, Haggard and Worn, Should Have Her Blood Examined for Iron Deficiency.

Administration of Nuxated Iron Will Increase the Strength and Endurance of Weak, Nervous, Careworn Women 100 Per Cent in Two Weeks' Time in Many Instances.

THE CHILD'S APPEAL ing drugs, stimulants and alcoholic beverages I am convinced that in this way they could start off disease, prevent it, and thereby the lives of thousands of children.

Mother, why don't you take NUXATED IRON and have nice rosy cheeks instead of being so nervous and irritable all the time and looking so haggard and old? The doctor gave some to Susie Smith's mother and she was worse off than you are and now she looks just fine.

There can be no healthy, beautiful, rosy cheeks without iron. Dr. Ferdinand King, New York Physician and Medical Author, "In the blood of the mother, the life of the child is hidden. If the mother is deficient in iron, the child will be deficient in iron."

Dr. Ferdinand King, New York Physician and Medical Author, tells physicians that they should prescribe more organic iron—Nuxated Iron—for their patients—Says anaemia—iron deficiency—is the greatest curse to the health, strength, vitality and beauty of the modern American Woman—Sounds warning against use of metallic iron which may injure the teeth, corrode the stomach and do far more harm than good; advises use of only Nuxated Iron.

NOTE—Nuxated Iron, which is prescribed and recommended above by physicians, is not a patent medicine or secret remedy. It is a natural iron compound, and is made from the most common foods of America, the starches, sugars, and table salt, and is sold in the form of tablets, bread, soda crackers, biscuits, macaroni, spaghetti, tapioca, and other food products.