

APPLE IMPORTATIONS INTO BRITAIN STILL A SUBJECT OF DEBATE

Growers and Carriers Say Cargo Space Available on Liners; Government Balks.

PLAN FURTHER EFFORTS

Oregon Congressman's Secretary Asks State Department to Make Another Appeal.

Washington, Nov. 15.—(WASHINGTON BUREAU OF THE JOURNAL).—Declining to take "no" for an answer, further effort is to be made to secure some modification of the British edict against the importation of apples from the United States, a rule which also applies to Canada.

E. D. Baldwin, secretary to Congressman Sinnott, acting for Mr. Sinnott and the apple growers, has just asked the state department to continue negotiations with the British authorities. The last word from across the water, which was evidently intended to be final, was a note from Ambassador Page at London, saying he was informed by the British foreign office that further consideration had been given the question, but the prohibition order cannot "at present" be modified.

Space Too Valuable

The British trade controller stands on the dictum that space cannot be found aboard ships for apples. The apple growers and dealers stand upon the opposite assertion that space is available, supporting this by direct testimony from leading steamship companies, such as the Cunard and White Star lines, who say that light cargo such as apples could be handled if the handling were permitted, without interfering with regular cargo.

The British trade controller, however, trumps every trick with the flat assertion that cargo space is not available. British importers and dealers from all parts of England and Scotland have held meetings and urged that the regulations be modified.

Great Fias Is Made

Apple growers of the United States and Canada have pleaded to be allowed to use the space which they assert is going to waste. Dietary authorities have supported the movement by showing that apples are a valuable food for a people whose choice of things to eat is limited.

Seamen Not Laborers

Washington, Nov. 15.—In the case of the American steamship Mackinaw the supreme court of the United States has decided that there is no violation of the contract labor law in hiring Chinese at Shanghai for a voyage to San Francisco, and that shipping them on vessels of American registry for Transpacific service.

It was alleged in the complaint that the seamen thus shipped were alien laborers and that the steamship Mackinaw was a part of American territory, thus violating the law against bringing contract labor into the country.

Justice Clarke, delivering the opinion of the court, declared that men shipped as seamen do not classify

as laborers. While a ship of American registry on the high seas is American territory for jurisdictional purposes, said the court, "to expand the doctrine to the extent of treating seamen employed on such a ship as working in the country of its registry would be grotesque."

Pig Iron Wanted in West
Washington, Nov. 15.—The priority committee of the council of national defense has been asked by Congressman Sinnott to give consideration to the need of having sufficient pig iron moved west to take care of the manufacturing wants of plants which produce agricultural machinery, particularly for harvesting.

Norway Turns Over Sugar
Washington, Nov. 15.—One instance of a foreign neutral government representative declining to profiteer at the expense of the American people is refreshing among the reports of discriminations and money exchange manipulations of recent days.

Liberty Loan Totals For West Given Out

Twelfth District Subscribed \$290,576,900, Oregon \$25,455,900, Portland \$12,904,500, Medford \$346,750.

San Francisco, Nov. 15.—(U. P.)—Virtually final returns from all states in the Twelfth federal reserve district show that this district subscribed \$290,576,900 worth of Liberty bonds, or was announced by Governor Lynch. These figures probably will be very little changed by incoming late returns from far outlying districts.

The subscriptions by states and territories follow:

Alaska and Hawaii	\$ 5,627,050
Arizona	7,118,850
California	18,482,550
Idaho	10,782,700
Nevada	2,475,500
Oregon	25,455,900
Utah	15,817,000
Washington	41,339,850
Total subscriptions of principal northwest cities are:	
Oregon—Portland	\$12,904,500; Medford \$346,750; Baker \$411,950.
Washington—Seattle	\$15,185,250; Tacoma \$4,381,500; North Yakima \$877,700; Walla Walla \$1,689,700; Spokane \$5,642,200; Wenatchee \$158,400.

Experts in Finance Will Be Witnesses

Washington, Nov. 15.—(U. P.)—Frank A. Vanderlip, chairman of the war savings committee, and Paul Warburg of the federal reserve board, will testify before the interstate commerce commission on November 16 in the reopened 15 per cent case on the amount of credit now available to the railroads and on the general conditions of the money market. They were called as witnesses by the commission without suggestion from any other parties to the rate increase controversy, it was stated at the commission's office.

COAL SUPPLY OUTPUT TO BE INCREASED BY ADOPTION OF PLANS

Fuel Administrator Garfield Pleased at Way Miners in Central States Take Hold.

Kansas City, Mo., Nov. 15.—(I. N. S.)—That the automatic penalty clause, which Dr. Harry A. Garfield, public fuel administrator, insists must be written into the agreement reached here by the operators and miners of the Southwest, will be accepted was indicated Wednesday when the convention, composed of delegates from the Missouri, Kansas, Oklahoma and Arkansas coal fields defeated a resolution to reject the clause.

Dr. Garfield declared that every effort will be used by the United States Fuel administration to increase coal production wherever possible. He declared, however, that the production of coal alone cannot solve the problem, and that there must be the strictest economy of all stores of coal that serious shortages may not work hardships upon the people.

The war needs of the nation threaten to outstrip the supply of coal, said Dr. Garfield. He gave figures to show that the millions of dollars now demanding from 33-1-3 to 50 per cent more coal than it has ever used before. He gave as an example the Bethlehem Steel company which has almost tripled its coal consumption during the past year.

The United States government is also a far greater consumer of coal than ever before, Dr. Garfield declared. He pointed out that statistics show that the government is now using 200 per cent more coal than it has ever used before. This great increase is brought about by the increased war activities, and includes huge shipments of coal for the United States navy and the various military establishments.

Public utilities have also increased their demands on an average of 33-1-3 per cent, and the situation is now serious, Dr. Garfield was nevertheless optimistic and said that he believed proper conservation methods would effect savings which would largely wipe out the shortage.

Very Special at \$4.45!

—Third Floor, Lipman, Wolfe & Co.

Arrested I. W. W. May Be Interned for War

Government May Turn Cracksmen and Force Safe if Combination Is Not Revealed to Sleuths.

Omaha, Nov. 15.—(I. N. S.)—Government agents will take stenographic statements of every I. W. W. arrested in the raid on the convention Tuesday before deciding definitely what to do with the prisoners. Many, if not all of them, probably will be interned.

Further examination of records of the I. W. W. headquarters indicates Omaha was intended for an important national office of the organization. A cabinet containing membership files held thousands of cards. There was also considerable correspondence directed to Anton Anderson, secretary of local 574 at 845 Tenth street, Rockford, Ill.

Unless secrets of a safe seized in the raid are revealed or the combination to the lock given, the government will force the safe. A large amount of the literature taken during the raid consisted of directions for carrying out rules of sabotage.

The present Russian trouble he blamed on leaders who have obtained power there and tried to force unwelcome methods of living upon the people.

Sacrifices Needed, Says Gompers, to Win

Labor Leader in Speech, Urges Employer to See Employee's Side of Life, So Both May Gain.

Buffalo, N. Y., Nov. 15.—Every true American both capitalist and worker, must be prepared to make great sacrifices in order to help win the war, Samuel Gompers, president of the American Federation of Labor, declares.

In a speech to the executive club of Buffalo and the Greater Buffalo club, Gompers urged that business men look more closely into the workers' side of the labor question and familiarize themselves with both sides of the case. He said that before the war he was an officer of many pacifist organizations in Europe, but that the war had changed his views. He predicted absolute defeat of Kaiserism.

The present Russian trouble he blamed on leaders who have obtained power there and tried to force unwelcome methods of living upon the people.

Food Embargo Hurts Dutch East Indies

San Francisco, Nov. 15.—America's food export embargo is seriously affecting the Dutch East Indies, according to a cable from the Dutch representatives of a rubber company, who returned Wednesday in the Dutch steamer Ophir from Java and Sumatra. They said some food prices have increased 100 per cent in two months. All of last year's sugar crop remains unharvested, they said, owing to lack of vessels to distribute it to the world's markets.

S. F. Conductor Beaten by Mob

San Francisco, Nov. 15.—(I. N. S.)—Although the United Railroads strike ended several weeks ago with the establishment of a boycott by union labor, there was a renewal of rioting Wednesday when a mob chased Howard Clark, S. F. R. Houch and E. W. Worden representatives of a rubber company, who returned Wednesday in the Dutch steamer Ophir from Java and Sumatra. They said some food prices have increased 100 per cent in two months. All of last year's sugar crop remains unharvested, they said, owing to lack of vessels to distribute it to the world's markets.

Loses Beauty, Wins \$6000
Los Angeles, Nov. 15.—(I. N. S.)—A woman's beauty is worth \$6000 in the opinion of a Los Angeles jury. This sum is awarded Miss Helen Ellsworth Wednesday because her face was disfigured by flying glass when an automobile driven by J. A. Bentel crashed into a machine in which she was riding. Miss Ellsworth sued for \$15,000.



Lipman Wolfe & Co.
Merchandise of Merit Only



120 Women's Cheviot, Melton Cloth and Wool Velour



100 Cleverest New HATS
Reduced to \$4.45

—A very special week-end sale—one that should appeal to all thrifty shoppers who want new, smart, up-to-the-minute hats at a very moderate price!

LYONS, PANNE AND PLAIN VELVETS and HATTERS' PLUSH HATS

—The styles and workmanship are the kind usually found only in high priced hats. —Both black and colors in small, medium and large hats in an excellent variety of styles. Soft, severely tailored, close fitting and large hats.

Very Special at \$4.45!
—Third Floor, Lipman, Wolfe & Co.

COATS
Special Friday
\$16.50

—A good variety of the newest 50-inch models—some are trimmed with fur and others are in more tailored styles. All have large cape collars, many with velvet trimming. —In smart belted styles—the very newest colors—Brown, Taupe, Beetroot, Navy Blue and Black. Ever so smart—and certainly wonderful values—every one is a great special at \$16.50! **Sizes for Women and Misses**

Special Sale
Many Exclusive Models
SUITS Reduced to \$33.50 and \$43.50

—This is the most important announcement made by our Apparel Department this season! —Included are handsome velvet, broadcloth and velour suits, fur and velvet trimmed—and strictly tailored suits of Serge, Cheviot and other fabrics. Really wonderful specials!



Handsome Plush Coats
Special \$29.50

—Handsome coats in six of the season's smartest models. Coats sure to be more popular as the winter advances. —Attractive styles with large cape collars and belts. Very special at \$29.50.
—Third Floor, Lipman, Wolfe & Co.

Economy Basement Store

"WHERE YOU SPEND THE LEAST AND GET THE MOST FOR IT"

FRIDAY—REMNANT DAY in the BASEMENT

—Remnants of every description—an accumulation for a month or more—**SILKS, VELVETS, WOOLEN GOODS, OUTFIT FLANNELS, GINGHAMS—LACES OF ALL KINDS—embroideries, etc.** In all imaginable lengths—from a bit of lace for trimming a gift to material for a whole dress. **ALL AT WONDERFUL REDUCTIONS!**
—Economy Basement, Lipman, Wolfe & Co.

Women's Felt SLIPPERS \$1.48

—Warm felt slippers with padded soles, trimmed with ribbon and pom-poms. Pretty shades of pink, blue, old rose and gray.

FELT SLIPPERS 85c AND 98c
—Women's felt slippers with padded soles. Red, blue, gray and black. In two groups at 85c and 98c.

MISSSES' AND CHILDREN'S SLIPPERS 98c
—Pretty red slippers with warm, padded soles. 98c.

MISSSES' GRAY FELT SLIPPERS 75c
—Gray felt slippers with heavy felt soles.
—Economy Basement, Lipman, Wolfe & Co.

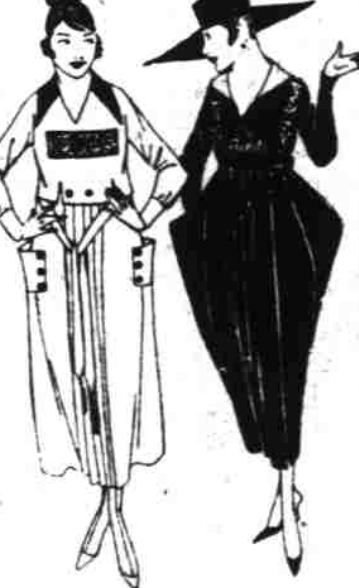
ALL WOOL STORM SERGES, SPECIAL, YD. \$1.25
—Excellent quality all-wool serge, full 42 inches wide. Sponged and shrunk. The best colors.

17-IN. CORSET COVER EMBROIDERIES YARD 19c
—A special price Friday for pretty eyelet and solid embroidery. Both cambric and nainsook. Very special!

PERCALE APRON DRESSES, SPECIAL 69c
—Three styles in women's apron dresses. All have full belts and pockets.

WOMEN'S FLANNEL-ETTE KIMONOS, SPL. \$1.29
—New styles, made with high neck and long sleeves. Pretty patterns. Grey, rose and blue. Sizes 36 to 44.
—Economy Basement, Lipman, Wolfe & Co.

A Great Sale of DRESSES



Sample Satin Dresses, Broken Assortments of Satin Dresses—Samples of Serge Dresses and Broken Assortments of Serge Dresses—Friday

\$13.75

—And all of these dresses were made to sell for much more than that? In fact many of these very dresses have been priced considerably higher up to the opening of this sale!

—The smartest, newest styles—just one of a kind and size in many instances. Sizes 16 to 44.
NO TELEPHONE OR C. O. D. ORDERS AND NONE RESERVED
—Economy Basement, Lipman, Wolfe & Co.

Misses' VELVET Ready to Wear HATS Special 89c

—Clever hats made of velvet with soft crown and drooping brims. In black and colors—trimmed with fancy silk cord. Just about a third what they're worth!

145 FELT HATS SPECIAL AT 79c
—Just the sort of hat to wear in all kinds of weather. A good variety of colors—and styles suitable for women and misses. Very special at 79c.

NEW TAILORED HATS SPECIAL \$1.45
—A good assortment of smart hats in plain and panne velvet. Very special at \$1.45!
—Economy Basement, Lipman, Wolfe & Co.



CURTAIN SCRIMS, SPECIAL AT ONLY 19c
—Curtain scrims and marquisettes in white and cream with pretty colored borders. Very special at 19c yd.

MARQUISSETTE SASH CURTAINS, SPECIAL 19c
—Hemstitched marquisette sash curtains—ready made—all you have to do is hang them! White, cream and ecru.

MANUFACTURERS' SAMPLE CURTAINS 49c
—A VERY SPECIAL PRICE—and just 200 curtains! Nottingham lace curtain samples in white or ecru. Two to six of a kind.

CHILDREN'S GINGHAM DRESSES, SPECIAL 59c
—Sizes 2 to 6 years. All white dresses or plain or striped gingham. Good styles.

CHILDREN'S STRAIGHT LEG ROMPERS, FRIDAY 59c
—Sizes 2 to 6 years. Plain colors, stripes plaids, as well as white. Neatly made and trimmed.

CHILDREN'S TOQUES SPECIAL FRIDAY AT 35c
—Cardinal or white toque or stocking caps. Plain weave finished with tassel.

CHILDREN'S CORDUROY HATS, VERY SPECIAL 79c
—Brown, white, Navy or green corduroy hats, made with drooping brims.

C. B. A LA SPIRIT CORSETS SPECIAL AT 98c
—SAMPLE CORSETS—made of coutil and batiste in low, medium and medium high bust models. All sizes. Models for figures of all styles. Very special at 98c.
—Economy Basement, Lipman, Wolfe & Co.

CHARLIE CHAPLIN IN 'THE CURE'
A Comedy Riot in a Sanitarium
On Big Double Bill with
JACK GARDNER IN 'Men of the Desert'

Our Prices (including Tax):
Matinees, 5c and 15c
Evenings and Sundays, 10c and 20c

Perfection Pictures present this greatest of all "Western" dramas, the story of the famous Gaylor-Norris range feud. This was the last big feud between cattlemen and sheepmen, and the photoplay, with Jack Gardner, gives a vivid, graphic portrayal of life on the old Western frontier.

Begins Today—Three Days Only

50 Boys' Overcoats \$3.95

—For little fellows 3 to 10 years old! 50 coats in an extraordinary Friday sale. Dandy, warm coats made on the newest models. Brown, grey and tan mixtures. Every coat fully lined!

200 BOYS' SUITS AT \$3.95
—Every suit with 2 pairs of pants. Staunch, sturdy suits made to withstand the hardest service. Brown, grey, and tan mixtures. Sizes 3 to 10. Very special \$3.95!

Special—35 Corduroy Suits—in broken sizes at \$3.95.

Special—50 Blue Serge Suits—in broken sizes—\$4.45.

Special—Boys' Flannel Blouses 69c.
—Economy Basement, Lipman, Wolfe & Co.

SPECIAL Women's Silk Fibre HOSE 39c

"SECONDS" of very fine quality.

—Grey, champagne, maize to match the newest shoes and dresses. All have cotton garter tops and double soles. The imperfections are so slight as not to be noticed.

Women's Black Cashmere Hose 35c.
—Economy Basement, Lipman, Wolfe & Co.

MEN These Special Savings Friday

Heavy weight saaten and khaki work shirts—The best made—guaranteed not to rip. If they do—new shirts free! Less than present wholesale cost—Very special at 79c

Chalmers' heavy winter shirts and drawers—The right weight for out-door workers. All sizes—soft, fleeced. Mill runs. Very special 69c

Heavy weight worsted socks—A very special sale All sizes—black—with double heels and toes, seamless feet and ribbed tops. Guaranteed fast color. Famous Burlington make. Less than wholesale cost. 25c
—Economy Basement, Lipman, Wolfe & Co.