

CAREFUL DRIVING IS ESSENTIAL FACTOR IN EFFECTING ECONOMY

C. C. MacCleverty Explains How Motorist Can Offset Costs of Operation.

MUCH GAS BEING WASTED

Habit of Letting Engine Run When Car Is at Standstill Is Expensive and Wasteful.

There have been some big increases in fuel and oil prices. Tires have increased in price to some extent, and many other things required in the operation of a car cost more than formerly...

Mr. MacCleverty declares, "It is probably conservative to state that from 8 per cent to 10 per cent of the fuel used by motorists in the United States, can be saved if all motorists will stop running their motors when cars are standing still..."

Care of Tires Urged "We who are engaged in tire selling are, of course, more interested in the care of tires than we are in anything else connected with motoring..."

Careful Driving Cheapest "I am glad to say that most motorists have learned the advantage of careful driving and attention to the things that mean economy in automobile operation..."

Australia to Admit Only Chassis of Cars Temporary Decline in Shipments From America Expected to Develop as Result of Order.

Nevada Will Spend Big Sum on Roads

Reno, Nev., Oct. 20.—A statement has just been issued by the Nevada tax commission, indicating the funds available for road improvement under the latest tax levy...

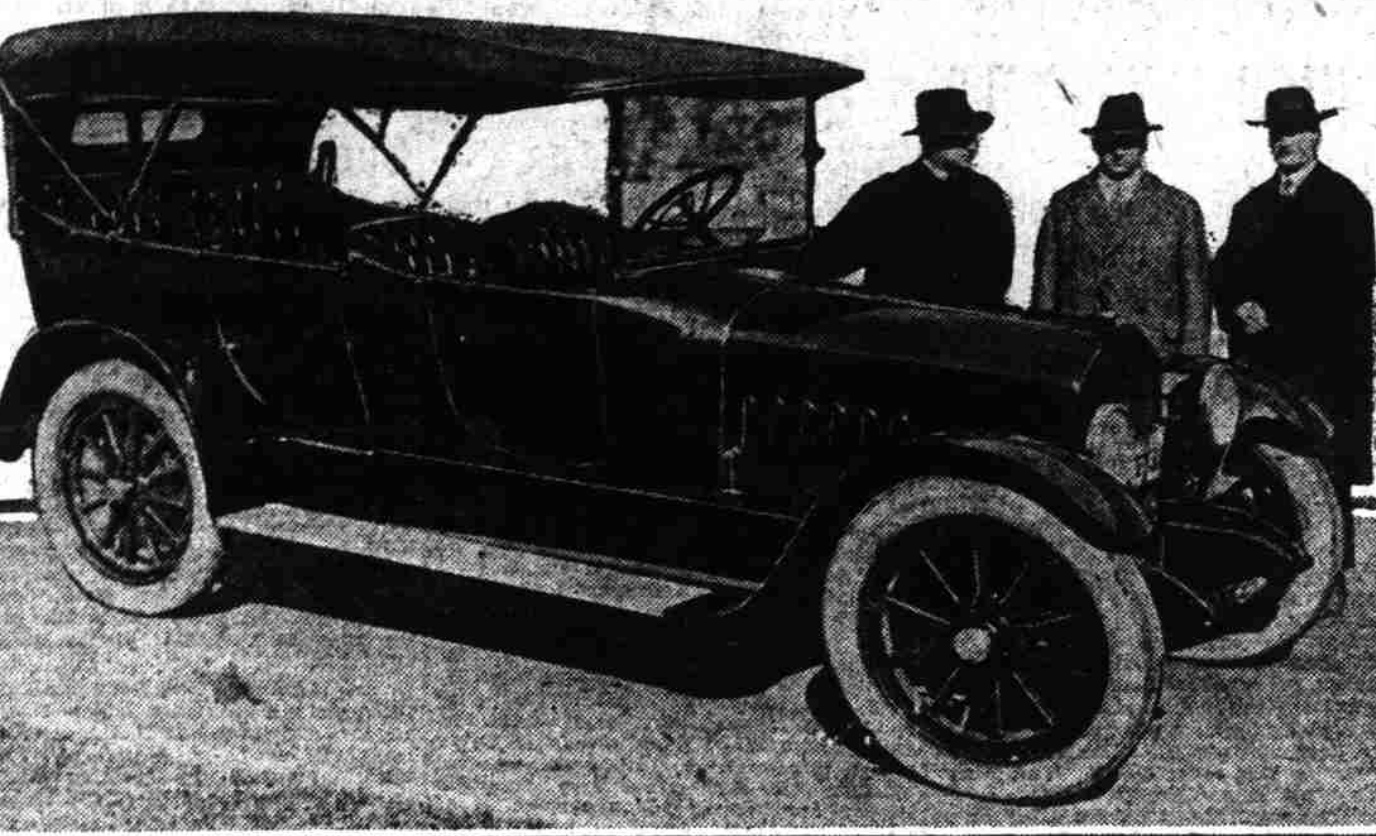
Vellie Wins Awards At Goldendale Fair

When the Goldendale county fair was in progress, a week ago, automobile novelty races were leading features of the show...

Hood River Bridge May Be Replaced

In the opinion of State Bridge Engineer Purcell, the Hood River bridge is too light for the traffic of the Columbia river highway, and it is proposed to replace it with a concrete structure...

PEERLESS CAR IN NEW SELLING HANDS



One of the big Peerless products and principals involved in the recent change. Ben Reherd, Peerless factory representative; A. M. Stone and D. C. Warren, salesmanager and president, respectively, of the D. C. Warren Co.

German Prisoners Willing Workers

John Brady of Packard Company Returns From France and Tells of Conditions in Europe.

"Of all the willing workers, commend me to a German war prisoner, says John Brady of the Packard technical service department, who has just returned from France."

"The harder the German prisoner works, and the more he makes himself useful, the less likelihood there is that he will be turned back to the German army in an exchange of prisoners..."

The traditional politeness of the Frenchman is not lacking in his treatment of his guests from the German army, Brady says. He saw a large group of them uncrating and handling shipments of goods from America...

Brady's work in France was helping the French officials in charge of army transportation get the best results from their Packards and getting back into service those that had been partially wrecked by shell fire.

Any motorist who will employ a fraction of the judgment and common sense that he uses on his job or in his business in the operation of his car, will probably find that he can run it at little more expense than he did before war taxes and war prices became established."

The luxury board of Australia has at last announced its policy in regard to automobile importation. Under its decree the importation of complete motor vehicles is prohibited...

Seth and Lochinvar Are Somewhat Alike

In many respects there is not much similarity between Seth Hudgins, nationally known motorcycleist, and young Lochinvar. Lochinvar rode a trusty steed while Hudgins has a motorcycle. Loch came out of the west. Hudgins came into it.

Easy Way to Find Positive Wire Given

When charging terminals are not marked plus and minus to indicate the positive and negative sides, the following method may be used to determine the polarity: Attach both sides of the circuit to small lead plates and place these plates in a

tumbler nearly filled with battery solution or electrolyte. Turn on the current and after three minutes re-

move the plates. The one which shows brown discoloration is attached to the positive side.

Mitchell SIXES advertisement with prices \$1250 and \$1525 for different models.

Two Model Cars Built in 19 Exclusive Styles With Many Special Features

The Mitchell fall line embraces two sizes of Sixes. It includes 19 new-style bodies—the largest line of like class in motordom. It embodies 31 wanted features which are rarely found in cars, countless new touches and many exclusive designs.

Two Under-Prices. There are two sizes, two prices. And both prices are below other cars of their size and class.

Yet both cars are built to the standard of 100 per cent over-strength. That is twice our former margin of safety. Cars built under this standard have proved their ability to run 200,000 miles.

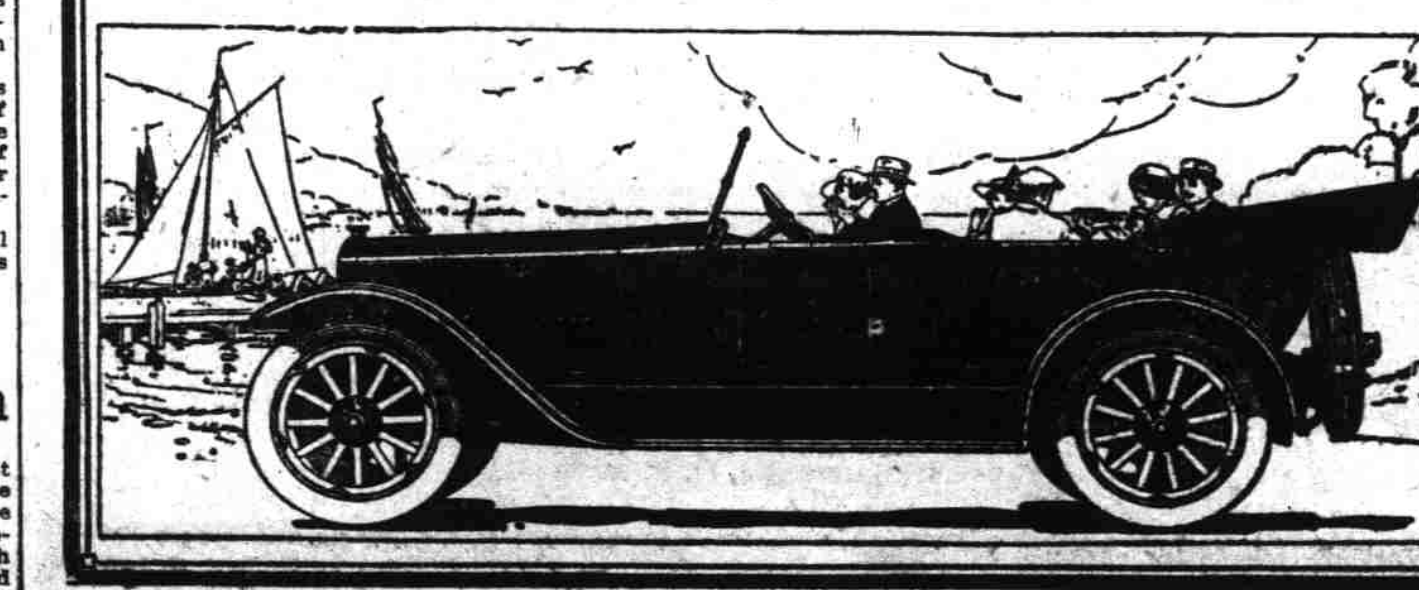
One has 31 extra features, and the other almost as many. That is, features, like a power tire pump, which nearly all cars omit.

These things are due to John W. Bate, the famous efficiency expert. This plant and equipment which he designed has cut labor cost in two. And all the vast savings go into these extra values.

19 New Designs We have our own body-building plant, our own expert designers. So our styles are exclusive, and they include 19 new-day

Mitchell SIXES TWO SIZES \$1525 Mitchell - a roomy 12-inch wheel and 2-light developed 4-horsepower motor. Three-Passenger Seating, \$1490 Sedan, \$1575 Cabriolet, \$1990 Coupe, \$2125 - Club Sedan, \$2192 Also Town Car and Limousine. \$1250 Mitchell Junior - a 3-light 10-inch or 8-horsepower 8 1/2-hp and 6-horsepower motor. 12-inch wheel. Club Roadster, \$1990 Sedan, \$1950 - Coupe, \$1990 All Prices f. o. b. Racine.

Mitchell, Lewis & Staver Co. BROADWAY AT OAK SERVICE AND USED CARS—E. MORRISON AND 1ST



PEERLESS LINE TAKEN FOR THIS TERRITORY BY WARREN MOTOR CO.

D. C. Warren Closes With Ben Reherd, Factory Representative of Cleveland.

NEW STOCK IS ARRIVING

Carload of Cars "With Second Wind" Received for Trade in Oregon and Southern Washington.

Following a conference last week between D. C. Warren, president and manager of the D. C. Warren Motor Car company and Ben Reherd, factory representative of the Peerless Motor Car company of Cleveland, Mr. Warren became the Peerless dealer for the state of Oregon and Southern Washington, succeeding H. L. Keats of the H. L. Keats Auto company, who has handled the line for the past 10 years.

Up to the present time the D. C. Warren Motor Car company have handled the Valle line exclusively for the last three seasons. During that time Mr. Warren had aimed to take on a

higher priced line, but did not make his desires known, as he was waiting for an opportunity to get a line of a reliable car. The strong retail organization of sub-dealers under Mr. Warren throughout the state was one of the attractive features considered by Mr. Reherd and caused him to select the D. C. Warren company to handle the Peerless.

Since Mr. Keats had disposed of the retail end of his business, he did not feel justified in retaining the wholesale end which he has handled for the past 10 years.

The Peerless line is well known as one of the most reliable makes of automobiles, and the widely known two-power-range is one of the chief

features of that popular eight-cylinder car. The novel construction which gives this car all the advantages of the so-called loading range and at the same time all the thrills and surge of emotion experienced in driving a car of tremendous speed and power has gradually led to its being known as the "car with second wind."

Mr. Warren is planning to keep a full stock of parts on hand in Portland at all times and will go after business on an extensive scale.

Testing Carburetor If you suspect carburetor trouble, try the following test: Run your car throttled down for two blocks. Choose

a moment when there is a clear space ahead and suddenly press accelerator pedal all the way down. The motor should pick up smoothly to as high speed as you care to run. If the motor chokes, stalls, misses explosions or labors, or gives backfire at carburetor, it shows the carburetor is out of adjustment.

Open Relief Valves Opening the relief valves to see if a cylinder is missing explosions is a good way, but it sometimes fails unless you speed up the motor. Give the engine plenty of gas and you will frequently get a burst of flame through the valve from what you thought was a dead cylinder.

This KISSELKAR The ALL-YEAR Car. For 144 hours this car stood this test and emerged perfect.

Read These Statements

"Having assured ourselves that a certain KisselKar, All Year Type, on display at the local showroom of the Pacific KisselKar branch, has for eight days, sixteen hours each day, been under a stream or flow of water amounting to 700 gallons per hour..."

(Signed) "FRANK E. WATKINS, President Oregon State Motor Association. "M. O. WILKINS, Pres.-Mgr. Dealers Motor Car Association of Oregon. "WILL F. POWELL, The Oregonian."

PACIFIC KISSELKAR BRANCH advertisement with service first seal and car illustration.

Another FEDERAL



F. A. CHAMBERLAIN finds this ton-and-a-half ideal for general hauling.

ONE day cement. Next day wheat or grains or heavy castings. The demands on this Federal in general hauling service are endless in variety. It is the extreme of rough-and-tumble service that so many Federals are meeting day after day under all weather conditions and all kinds of roads.

What this Federal does for this one Portland haulage contractor, any Federal will do. It will make money on the job just as his is doing. A Federal is always popular where trying jobs are the rule and the utmost in service and punctuality is demanded.

The way this truck responds is the reason why, when needing more trucks, present owners buy another FEDERAL.

Pacific KisselKar Branch advertisement with address and phone numbers.