

TAXES REDUCED EAST OF FIFTH BUT RAISED ON BROADWAY SITES

Action of Assessor Meets Approval of Those Familiar With Property Values.

FEW CHANGES ON SIXTH

Some Reductions Made on Fifth, But Heavier Cuts Are Made on Values on First Street.

Those who are intimately familiar with the real estate situation in Portland seem to be in entire accord with the action of the assessor's office, in so far as the land assessment of the business section of Portland for the year 1917, is concerned.

That is, he has lowered assessments in that section of the business west side from Fifth street to the river, has allowed Sixth street to remain about as it was in 1916 and has slightly increased the assessment on Broadway and along Washington one or two blocks to the west of Broadway.

On Broadway, one of the largest increases made by the assessor's office for the current year is the assessment in the 10 1/2 foot square occupied by the east half of the Liberty theatre at Stark street.

On Broadway, one of the largest increases made by the assessor's office for the current year is the assessment in the 10 1/2 foot square occupied by the east half of the Liberty theatre at Stark street.

On Broadway, one of the largest increases made by the assessor's office for the current year is the assessment in the 10 1/2 foot square occupied by the east half of the Liberty theatre at Stark street.

On Broadway, one of the largest increases made by the assessor's office for the current year is the assessment in the 10 1/2 foot square occupied by the east half of the Liberty theatre at Stark street.

On Broadway, one of the largest increases made by the assessor's office for the current year is the assessment in the 10 1/2 foot square occupied by the east half of the Liberty theatre at Stark street.

On Broadway, one of the largest increases made by the assessor's office for the current year is the assessment in the 10 1/2 foot square occupied by the east half of the Liberty theatre at Stark street.

On Broadway, one of the largest increases made by the assessor's office for the current year is the assessment in the 10 1/2 foot square occupied by the east half of the Liberty theatre at Stark street.

On Broadway, one of the largest increases made by the assessor's office for the current year is the assessment in the 10 1/2 foot square occupied by the east half of the Liberty theatre at Stark street.

On Broadway, one of the largest increases made by the assessor's office for the current year is the assessment in the 10 1/2 foot square occupied by the east half of the Liberty theatre at Stark street.

On Broadway, one of the largest increases made by the assessor's office for the current year is the assessment in the 10 1/2 foot square occupied by the east half of the Liberty theatre at Stark street.

On Broadway, one of the largest increases made by the assessor's office for the current year is the assessment in the 10 1/2 foot square occupied by the east half of the Liberty theatre at Stark street.

On Broadway, one of the largest increases made by the assessor's office for the current year is the assessment in the 10 1/2 foot square occupied by the east half of the Liberty theatre at Stark street.

On Broadway, one of the largest increases made by the assessor's office for the current year is the assessment in the 10 1/2 foot square occupied by the east half of the Liberty theatre at Stark street.

On Broadway, one of the largest increases made by the assessor's office for the current year is the assessment in the 10 1/2 foot square occupied by the east half of the Liberty theatre at Stark street.

On Broadway, one of the largest increases made by the assessor's office for the current year is the assessment in the 10 1/2 foot square occupied by the east half of the Liberty theatre at Stark street.

On Broadway, one of the largest increases made by the assessor's office for the current year is the assessment in the 10 1/2 foot square occupied by the east half of the Liberty theatre at Stark street.

On Broadway, one of the largest increases made by the assessor's office for the current year is the assessment in the 10 1/2 foot square occupied by the east half of the Liberty theatre at Stark street.

On Broadway, one of the largest increases made by the assessor's office for the current year is the assessment in the 10 1/2 foot square occupied by the east half of the Liberty theatre at Stark street.

On Broadway, one of the largest increases made by the assessor's office for the current year is the assessment in the 10 1/2 foot square occupied by the east half of the Liberty theatre at Stark street.

On Broadway, one of the largest increases made by the assessor's office for the current year is the assessment in the 10 1/2 foot square occupied by the east half of the Liberty theatre at Stark street.

On Broadway, one of the largest increases made by the assessor's office for the current year is the assessment in the 10 1/2 foot square occupied by the east half of the Liberty theatre at Stark street.

On Broadway, one of the largest increases made by the assessor's office for the current year is the assessment in the 10 1/2 foot square occupied by the east half of the Liberty theatre at Stark street.

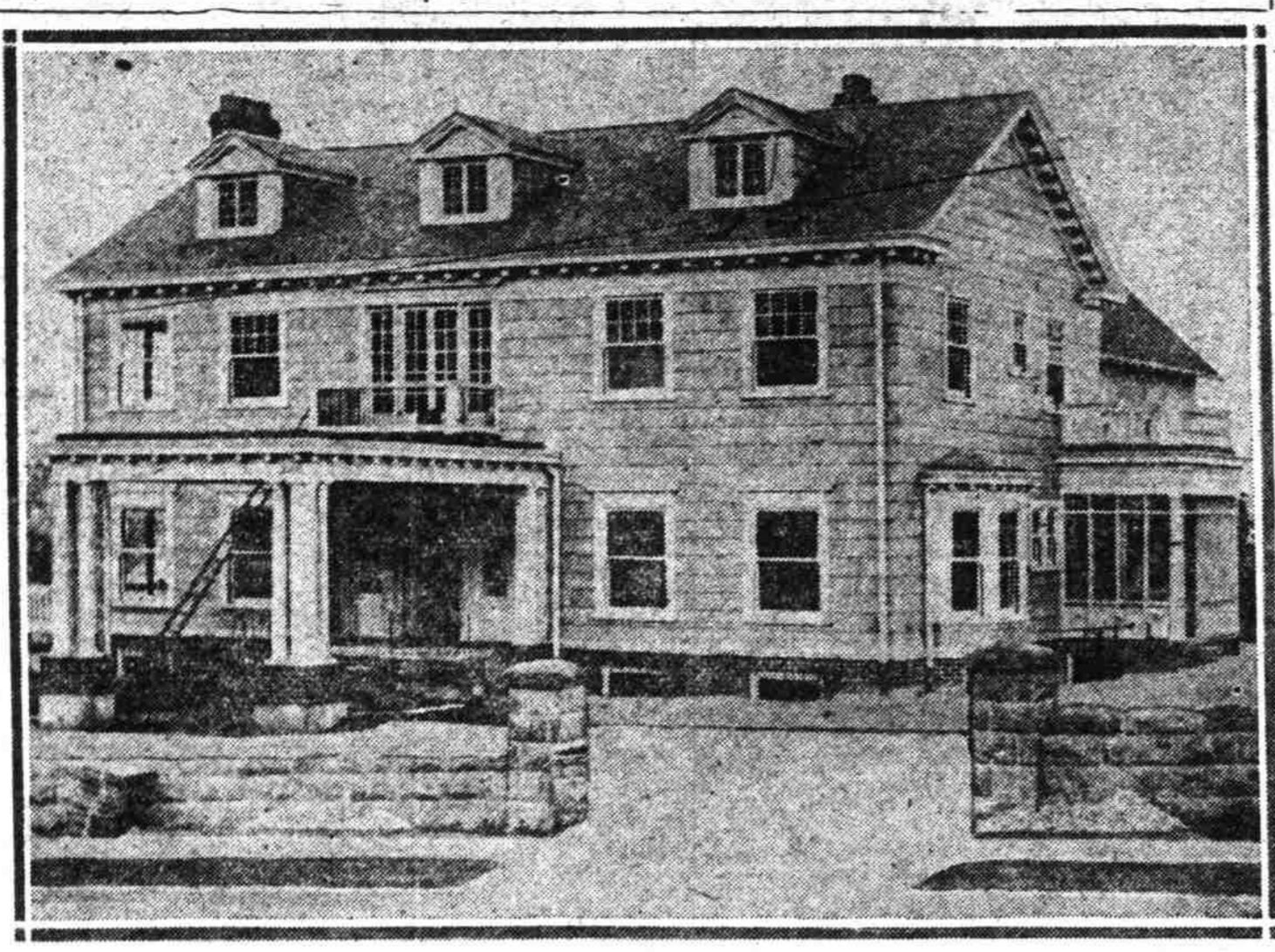
On Broadway, one of the largest increases made by the assessor's office for the current year is the assessment in the 10 1/2 foot square occupied by the east half of the Liberty theatre at Stark street.

On Broadway, one of the largest increases made by the assessor's office for the current year is the assessment in the 10 1/2 foot square occupied by the east half of the Liberty theatre at Stark street.

On Broadway, one of the largest increases made by the assessor's office for the current year is the assessment in the 10 1/2 foot square occupied by the east half of the Liberty theatre at Stark street.

On Broadway, one of the largest increases made by the assessor's office for the current year is the assessment in the 10 1/2 foot square occupied by the east half of the Liberty theatre at Stark street.

HANDSOME NEW HOME IS COMPLETED



Residence of A. Tichner on Arlington Heights. One of the handsomest of the new homes just completed in Portland is the beautiful two story dwelling facing Kingston avenue on Arlington Heights.

OUT-OF-TOWN REALTY DEALS

Heppner.—Real estate in the north end of Morrow county has been on the move the past few weeks, and several important deals were closed. There is a strong demand for wheat lands in that section and outside parties have been operating there for some time past.

Baker.—David Lee recently announced that he has purchased 80 acres of grain land in the Pocahontas district, six miles from Baker, from Frank Bowman. The consideration was \$7500. The land is all under cultivation and is said to be a sample of the finest in the county.

Stanfield.—One of the real estate deals made this week resulted in the change of ownership of 40 acres of fine alfalfa land near the reservoir at Stanfield, the new owner being Harry Bartholomew and the seller being Charles Hamilton. The place has been farmed by George Hamilton and is one of the most and best tracts on the project.

Albany.—The sale of a farm of 105 acres, situated near Philomath and owned by R. Walsworth of Albany, has just been completed by Hecker & Beam of Albany. The sale was made to Emil Hill of Los Angeles for a cash consideration of \$5000.

Burns.—A real estate deal of some magnitude was made last week when J. W. Biggs and J. M. McDade purchased 2,900 acres of the choice lands of the famous Trout Creek ranch, in the southern portion of Harney county, from Thomas & Walter of Portland. It is the intention of the present owners to stock this ranch with sheep and cattle.

Baker.—Mrs. Mary C. Harvey of Pendleton, who is the owner of large tracts of land in the Matilla county, bought 160 acres of Baker county farm land in the Sparta district. The land is in the new district which is under irrigation from the Sparta ditch, and is said to be some of the best acreage in the county.

Pendleton.—A Morrow county realty transaction of considerable magnitude was made when Miles Martin and Irvin Kunsman of Moro, Or., closed a deal with McCollough Bros. for the building at the southwest corner of Second and Stark, this year's assessment standing at \$45,000.

Uniform reductions were also made by the assessor in valuing First street property for taxation. The west side of Front street was given a lower valuation, most of the water front assessment standing at the same figures as last year.

Kernan to Go to France. Washington, Oct. 20.—Walter N. Kernan of Utica, vice president of the New York Railway company, has resigned to go to Europe to take charge of the work of the Knights of Columbus committee on war activities with the American forces.

When writing to or calling on advertisers please mention The Journal.

Advertisement for OREGON DOOR CO. SASH AND DOORS, General Mill Work, Foot Spokane Ave., Portland, Or. Also includes General Insurance BONDS, McCarg, Bates & Lively, Yeon Building—Main 168. A-2694.

MONEY PLENTIFUL FOR LOANS ON REALTY IN PORTLAND; RATE LOW

Dealers Say Offerings at 6 Per Cent Never Were So Heavy in Past 10 Years.

The local mortgage situation is just as acute, from the viewpoint of a plethora of money offered as it has been at any time during the past two or three years. The Liberty loan drive seems to have had no effect on those lenders who usually seek real estate security for their loans.

The local mortgage situation is just as acute, from the viewpoint of a plethora of money offered as it has been at any time during the past two or three years. The Liberty loan drive seems to have had no effect on those lenders who usually seek real estate security for their loans.

Second Floor of Old Ladd Bank Leased

Joseph R. Gerber, manager of the Arcady Press at 142 1/2 Second street, announces that that institution and the Oregon Multigraphing company, now in the Oregon building, have taken a lease on the second floor of the old Ladd bank building at First and Stark streets, with a view to combine the two concerns in a new organization and do a general printing and direct mail advertising business.

Permit Is Taken to Build Fine Home

L. R. Bailey & Co., builders of the more expensive types of dwellings, procured a permit last week authorizing the erection of a two-story frame dwelling at 691 East Twentieth street north, Irvington. The building will cost approximately \$7000.

San Francisco Forms Another Hospital

San Francisco, Oct. 20.—San Francisco's third Red Cross hospital for service in France is being organized. It will be known as Red Cross hospital No. 47.

CHECKS FOR \$1,500,000 IN BACK TAXES

These taxes and penalties amount to approximately \$1,500,000, covering the unsold lands of the grant, but not including the lands under contracts of sale. The adjustment of the taxes upon the latter is to be made when the question of legal ownership is finally determined by the supreme court of the United States.

Advertisement for BUILDING PERMITS, listing various permit numbers and amounts, such as 17041, 17042, 17043, 17044, 17045, 17046, 17047, 17048, 17049, 17050.

Warrants for accrued taxes on Oregon-California grant lands payable to 18 Oregon counties and Clarke county, Washington.

The 13 land grant counties of Oregon and Clarke county, Wash., have been waiting for a long time to receive the back taxes, with accrued interest and penalties due on the Oregon & California grant lands from the Southern Pacific Railroad company.

Auction Sales by Geo. Baker & Co. ESTABLISHED 1892. WE HAVE RECEIVED THE COSTLY FURNISHINGS FROM THE PRIVATE HOME OF A REVEREND CLERGYMAN WHO IS NOW IN SERVICE IN FRANCE. AND WILL SELL THE HOUSE AT THE BAKER AUCTION HOUSE.

Wilson's Auction House. 169-171 Second Street (Near Yamhill St.). REGULAR SALES DATES MONDAY, WEDNESDAY AND FRIDAY EACH DAY AT 10 A. M.

Auctioneer's Note. The above goods are now on display and you are kindly welcome to call and look over this fine lot of goods.

On Thursday Next. We shall sell the furniture, etc., of 8 rooms from the East Side. These goods can be seen on Wednesday afternoon.

Invitation. Have you visited our Annex, where we sell Furniture at all times? Our business is buying and selling household goods.

OAKLAND 1917 Model. Brand new car. Will sell at \$100 less than the list price.

Mitchel & Wallingford. Liberty Six, Premier Agency 522-526 Alder St.

WE'VE GOT 'EM LOOK 'EM OVER. 1913, 1914, 1915, 1916 and 1917 FORDS.

COVEY MOTOR CAR CO. 21st and Washington Sts. Main 6244. OPEN SUNDAY.

TO LEASE. The six story building known as the "Northwest" Building, at northwest corner of Washington and Sixth streets.

For Lease WAREHOUSE. Five stories and basement, 50x100. 328 Glisan St., bet. 6th and Bdwy.

Advertisement for KEMMERER and ROCK SPRINGS COAL, THE CLEANEST AND BEST BURNING COAL, CRYSTAL ICE & STORAGE COMPANY. Also includes Monarch Coal, WOOD KELLER FUEL CO., and General Insurance BONDS.

Advertisement for OREGON DOOR CO. SASH AND DOORS, General Mill Work, Foot Spokane Ave., Portland, Or. Also includes General Insurance BONDS, McCarg, Bates & Lively, Yeon Building—Main 168. A-2694.

Advertisement for DAILY FARM, 16 Miles from Portland, Fine Roads, 40 Minutes by Auto. 151 acres, about 80 cleared and under cultivation.

Ford Auction Co. 191 SECOND STREET 23RD STREET BARGAIN \$25,000. For Sale or Exchange.

COVEY MOTOR CAR CO. 21st and Washington Sts. Main 6244. OPEN SUNDAY.

TO LEASE. The six story building known as the "Northwest" Building, at northwest corner of Washington and Sixth streets.

Boys Wanted. 16 or over, with or without bicycles, \$50 to \$75 per month. Steady work, chance to learn trade and advancement.

Advertisement for DODGES! DODGES! 1915, 1916 and 1917 Dodge touring cars and roadsters. First class condition. Prices from \$550 to \$750. Terms.