

BRIEF INFORMATION

(33rd DAY OF 1917.)
Coming Events.
National Education association meets Portland, May 14.
Pacific Coast Claim Agents' annual convention, Portland, July 14.
Multnomah county fair, from September 11 to 16, at Gresham, Or.
Today's Forecast.
Portland and vicinity.—Tonight and Tuesday, partly cloudy; Wednesday, Tuesday, Oregon and Washington.—Tonight and Tuesday, partly cloudy; Wednesday, Tuesday, Idaho.—Tonight and Tuesday, partly cloudy.

Weather Conditions.

A large high pressure area overlies the central portion of the country and there is a small, high pressure area moving inland over British Columbia. An elongated depression overlies the Pacific coast of the Pacific slope, and another disturbance is central at the mouth of the New England coast. Showers have fallen in interior western Oregon, Washington, southwestern Idaho, British Columbia, Alberta, Nebraska, Tennessee, and Massachusetts.

Observations.

Table with columns: STATION, A.S. in. (Record), A.S. in. (Today), Change in 24 Hours, Highest Prev. (Today), Lowest (Today), Wind Velocity (Today), Wind Direction (Today), Precipitation (Today), Prevailing Wind (Today).

TOWN TOPICS

Rotary Bulletin Illustrated.—The Rotary club's bulletin announcing its Tuesday noon luncheon is a unique departure from the stereotyped luncheon club folder. By doubling the size and utilizing space ordinarily left blank, an excellent panoramic view of Portland and the harbor is presented.

Fruit Crop Promising.—Orchards at White Salmon, Wash., give promise of heavy yield, says Henry Dillon, fruit expert, who has just returned from looking after the pruning of the Mount Adams and W. T. Savage orchards.

Credit Men to Meet.—Why Men in Business will be the subject of a symposium at the dinner of the Portland Association of Credit Men Wednesday night.

Speaks for Y. M. C. A. War Fund.—William D. Wheelwright spoke Sunday in St. Mark's Episcopal church and made an appeal for the fund for the Young Men's Christian Association in its work among the soldiers during the present war.

Company A Drill.—Company A, First regiment infantry, Oregon reserves, will meet Monday at 8 p. m. at the Portland Riding academy.

Bliss Will Retire.—The Bliss regiment will meet tonight at the Elks club-rooms at 745, where the matter of procuring uniforms will be briefly discussed.

Reserve Cavalry Meets Tonight.—Complete organization of a reserve troop of cavalry will be effected at a meeting in the Portland riding academy, 813 Johnson street, at 8 p. m. this evening.

Porcelains on Display.—Invitations have been issued for the exhibition of decorated porcelains given by the Oregon-Klamath and Sunday evening Central library, from 10 a. m. until 9 p. m.

Lee Tong to Stand Trial.—Lee Tong pleaded not guilty this morning in federal court to a charge of possessing opium. Trial was set for May 28.

In Ladd's addition and vicinity will be held Tuesday evening at 7:30 o'clock in the Evangelical church, East Sixteenth and Poplar streets. A small club house has been offered, to be placed at the present court, if 25 members join for the season.

Thieves Get Jewelry.—A quantity of jewelry was stolen by thieves who robbed the home of Mrs. Louis Anderson and Celia Ross, at 204 Madison street. The thieves made their entrance by prying open a window during the occupants' absence on Saturday night, between the hours of 7:30 and 10 o'clock.

We are making a list of Canadians at present in the Oregon country and would ask all to send me their names and addresses.

Josselyn Headquarters Open.—B. S. Josselyn, candidate for mayor, today opened headquarters at 414 Pittcock block, with Will H. Bard in charge.

Steamer Jessie Markins, for Camas, Washougal and way landings, daily except Sunday, leaves Washington street dock at 2 p. m.

Commerce Safe Deposit Vaults.—3 Third street. Both phones.—Adv.

Dr. E. C. Brown, Eye, Ear, Molar, building, Broadway and Washington.

Dr. Dayton, glasses, Sweetland bldg. (Adv.)

Klamath Will Have A Railroad Day
Klamath Falls, Or., May 14.—A celebration is being planned for June 5, the date set by Robert E. Strahorn for throwing the first dirt on the Oregon, California & Eastern railroad.

Few Official Changes.
Dallas, Or., May 14.—When the new city administration took their seats here last week, the old appointive officers were retained, with the exception of W. L. Barber, street commissioner.

Oregon Food Preparedness Campaign

Official Communications From Oregon Agricultural College, Extension Service, U. S. Dept. of Agriculture Cooperating. Practical Suggestions From Other Authentic Sources. Contributions of The Journal's Garden Department.

Office 513 Oregon Building. Phone Broadway 440.

There are two kinds of vegetable gardens that are being planted at this time, says A. G. E. Bouquet, head of vegetable gardening at O. A. C. First of all is the back yard. This is not very large in area and the variety of vegetables grown should be as large as possible.

Where only a vacant lot is available for the garden, as wide a variety as possible should be planted in order that vegetables may be produced as early and as late as possible during the growing season.

Speaking Dates Set For Eastern Oregon
Beginning May 21, State Highway Commissioner Thompson will make a canvass of eastern Oregon in behalf of the \$6,000,000 road bond measure.

The following itinerary has been arranged:
May 21—Afternoon meeting at Madras, night meeting at Redmond.

May 22—Night meeting at Prineville.
May 23—Night meeting at Bend.

May 24—Night meeting at Burns.
May 25—Night meeting at Lakeview.

May 26—Night meeting at Klamath Falls.
May 28—Afternoon meeting at Crescent, night meeting at Lapine.

June 1—Afternoon meeting at Mayville, night meeting at Condon.
June 2—Night meeting at Heppner.

ABSENCE OF SOLDIER STUDENTS FROM REED LESSENS ACTIVITIES

Prior to Departure of Boys to San Francisco Great Excitement Prevailed.

With 14 men, including some of the most popular students, gone to the Presidio training camp and with the annual spring pre-examination drive on in full force, Reed college student activities have taken a sudden drop.

With Phillip Patterson and P. L. Menefee called to the camp, the students have departed of drilling, Jacob Kanzler, who lives near the college, had consented to take up the work, but he was called also.

Rubber pads to be clamped to their soles have been invented to protect shoes when digging and also to insure a man a sure footing while climbing ladders.

Heir to New Zealand Millions Sought

J. Loftus Phillips Once Resided Here

J. Loftus Phillips, one time resident of Portland, an heir in one of the biggest New Zealand estates, and missing to his relatives for the past 16 years, has become the object of a world-wide search.

Mr. Phillips, who if alive would be now about 60 years of age, was last heard of by his relatives in Auckland, New Zealand, 16 years ago.

Not long after Phillips ceased writing to his sister, his father died, leaving an estate valued in the millions. In the passing years there has been a constant effort to locate the missing heir without result.

Harold J. Schwartz of Chicago, prominently identified with Portland and the Pacific coast, representing the New Zealand family of Phillips, is now in Portland in an active search of some clue to the missing man.

The Bohemian RESTAURANT
127 West Park, Bet. Washington and Alder
Everything first class. Reasonable prices. Eat your breakfast at The Bohemian

Fresh Bohemian Rolls are now served in the morning.

John Day Mill Is Operating Again

John Day, Or., May 14.—The John Day flour mill, which has been idle for many years, has resumed operations under the management of O. G. Trester.

A warm, soaking rain fell in the valley Friday night. This was just what was needed for the crops.

Imperial Hotel
Broadway, Stark and Washington
Portland's Leading Hotel
Ideally located in the heart of things — on Broadway's 7th & 8th St. center.

PHIL METSCHAN JR., Manager

HOTEL SEWARD
WASHINGTON ST. & 12TH ST.
WASHINGTON HOTEL AT TWELFTH

WASHINGTON HOTEL
"Just the Hotel for You."

COURTESY, COMFORT, HOMELIKE ATMOSPHERE AT MODERATE PRICES, WHETHER FOR THE DAY, WEEK OR MONTH.

NEW ARRIVALS in Portland Should First Find Their Way to Hotel Cornelius

Reliable Dentistry
We guarantee our work for 10 years. We will examine your teeth free and tell you just what they require and what it will cost.

Boston Painless Dentists
Between 4th and 5th on Washington St.

BEAVER VARNISH
ASK YOUR DEALER
Portland, Oregon.

SCHWAB PRINTING CO.
BEN F. GREENE-HARRY FISHER
STARK STREET - SECOND

Custom Drapery Work to Order. Estimates Cheerfully Given. All Work Guaranteed, Department 3d Floor, Carpets, Draperies and Bedding, 3d Floor. Take Down-Town Luncheon With Your Friends in Our Beautiful Tea Room on 4th Floor — Soda Fountain and Ice Cream Parlors in Basement.

Trunks and Bags
LADIES' HOME JOURNAL PATTERNS SELL AT 10c AND 15c. NONE HIGHER. STYLISH, EASY TO USE, ACCURATE.

Double Stamps With Charge or Cash Purchases in All Depts.

Any Pattern Hat \$7.98 (Except White Hats) Models Formerly Priced From \$12.50 up to \$25

ONEIDA COMMUNITY PAR PLATE
Third Floor—Community Par Plate Silverware is guaranteed for fifty years. An ideal gift for the bride.

New Adams Design
—Teaspoons, set of six for \$2.75
—Dessert Spoons, set of six \$5.00
—Serving Spoons, set of 3 at \$2.75
—Soup Spoons, set of 6 at \$5.50
—Forks, priced set of 6 at \$5.00
—Hollow Handle Knives, six \$6.75
—Individual Butter Spreads, 6 for \$4.00
—Butter Knives on sale, at ea. 90c
—Sugar Spoons priced at, each 90c
—Cold Meat Forks, each at \$1.50

Undermuslins Underpriced
Women's Combinations At \$1.69
Bargain Circle, First Floor—Combination Suits of fine quality nainsook (drawers and corset cover), Princess open-drawer and waist-line styles. Trimmed with lace medallions and insets, fine embroidery, edgings. Made up in spidria material. Your choice only \$1.69

Women's Knit Underwear Tuesday Specials
—Women's Summer-Weight Vests, Pants and Union Suits in a great one-day sale at special low prices. In the Bargain Circle, on the Main Floor.

Sleeveless Vests at 25c
—Women's Sleeveless Low-Neck Vests, spring needle and ribbed styles; also shaped garments. Several neat 25c patterns. Specially priced only 25c
—Women's Fine Quality Ribbed Vests in regular and outsize; also bodice vests. Special this sale only 35c

Women's Union Suits 49c
—Women's Spring and Summer Weight Union Suits—low neck, sleeveless and with lace-trimmed knee. Come 49c in all sizes. Specially priced at 49c
—Women's Fine Lisle Union Suits in pure white—low neck, short sleeves, tight knee. Perfect-fitting and nicely finished. Special at only 59c
—Women's Lisle Union Suits in outsize priced for this sale only 67c

Butter Day
Model Grocery Fourth Floor
—Glenwood Creamery Butter—Special, 2-pound roll 83c
—Queen Olives—bulk—quart 35c

Eastman Kodaks and Cameras
—All sizes and all styles in the Photographic Department, on the Fourth Floor. Developing, printing, enlarging, framing at lowest prices. Double stamps given with all charge or cash purchases.

PETTY WALES DRESSES
Sport Dresses—Street Dresses—Evening Dresses
Serge, Taffetas, Crepe de Chine, Shantung

BETTY WALES Sport and Street Dresses for youthful women and misses. Made up in excellent quality wool serge. Smart new loose-fitting, straight-line effects, with large collars, fancy belts and pockets.

BETTY WALES Silk Dresses for general wear. Exceedingly pretty models in loose-fitting and novelty effects. Many have high waist-line, with loose belt and plaits to yoke.

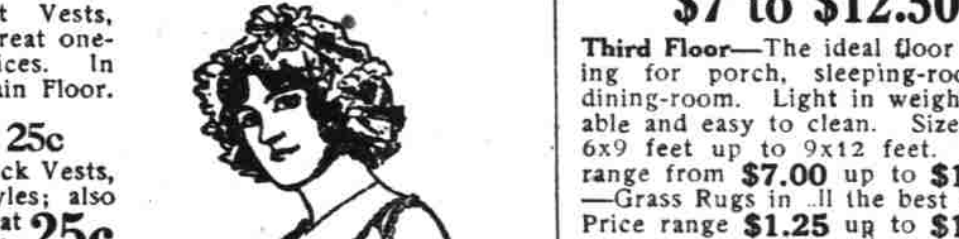
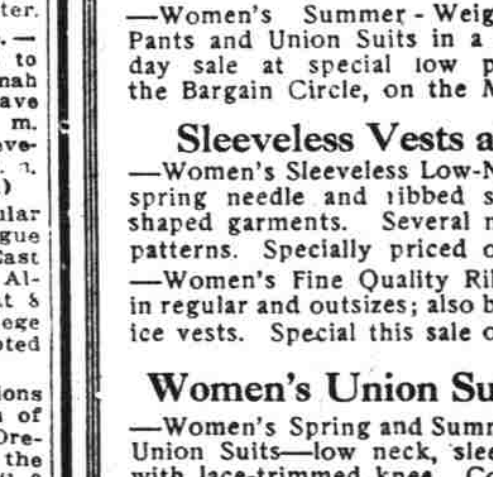
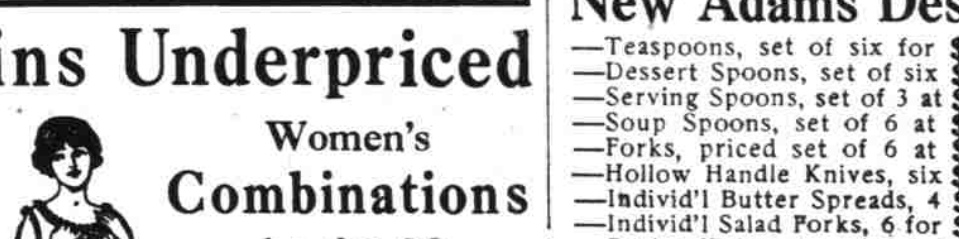
BETTY WALES SOCIAL FROCKS, for dancing and party wear. Beautiful creations in soft, lacy effects, with fitted waist-lines, over-draped ruffles or flounce styles.

Showing New Middy Suits
At \$2.49, \$3.50, \$4.50, \$5.95
Second Floor—These practical, useful little Suits have met with instant approval of all women who have felt the need of such garments for afternoon wear.

Men's and Young Men's Suits
\$15, \$20, \$25, \$30, \$35, \$40
Men's Store, Main Floor—Don't take our word for it—step in and see for yourself the exceptional values we offer in Spring Suits at the above prices.

Men's Straw Hats Underpriced
Main Floor—Until further notice we will sell our entire stock Men's New Spring Straw Hats at following special prices—all shapes. Panamas, Bangkoks, Sennets, Milans.

—All Men's \$1.75 Panamas and Leghorns on \$3.75 special sale only
—All Men's \$6.00 Bangkoks and Panamas on sale at \$4.25
—All Men's \$7.50 Bangkoks and Panamas on sale at \$5.50



We Are Exclusive Portland Agents for the Famous

Petty Wales Dresses

Sport Dresses—Street Dresses—Evening Dresses
Serge, Taffetas, Crepe de Chine, Shantung

BETTY WALES Sport and Street Dresses for youthful women and misses. Made up in excellent quality wool serge.

BETTY WALES Silk Dresses for general wear. Exceedingly pretty models in loose-fitting and novelty effects.

BETTY WALES SOCIAL FROCKS, for dancing and party wear. Beautiful creations in soft, lacy effects, with fitted waist-lines, over-draped ruffles or flounce styles.

Showing New Middy Suits
At \$2.49, \$3.50, \$4.50, \$5.95
Second Floor—These practical, useful little Suits have met with instant approval of all women who have felt the need of such garments for afternoon wear.

Men's and Young Men's Suits
\$15, \$20, \$25, \$30, \$35, \$40
Men's Store, Main Floor—Don't take our word for it—step in and see for yourself the exceptional values we offer in Spring Suits at the above prices.

Men's Straw Hats Underpriced
Main Floor—Until further notice we will sell our entire stock Men's New Spring Straw Hats at following special prices—all shapes. Panamas, Bangkoks, Sennets, Milans.

