

### PORTLAND ATTACKED AS VERY SELFISH IN MEETING AT ASTORIA

#### Collector Burke Stirs Up Hornets' Nest in Advocating Passage of Lane Bill.

### REPRISAL IS ATTEMPTED

#### All Now Being Prepared for Consideration by Congress Moving Customs Headquarters to Astoria.

Astoria, Or., March 7.—Thomas C. Burke, collector of customs for Oregon, addressed the port of Astoria Commission and others Tuesday regarding the proposed changes in customs laws affecting the mouth of the river. Collector Burke explained in his talk that the effect would be the repeal of sections of the federal statutes which now compel vessels entering the Columbia river to file their manifests at the custom house here. There has been much opposition to the bill here, as it is claimed that it would eliminate Astoria as a port of entry.

### Astoria Wants Headquarters.

At its last meeting the port commission authorized its attorney to prepare a bill to be presented to congress, moving the headquarters of the Oregon custom district from Portland to Astoria. The bill is now being prepared and will be sent to Washington soon.

The session of the port commission developed into a heated discussion of the subject between Collector Burke and G. C. Fulton, attorney for the port. Mr. Burke stated that he was a friend of Astoria and said it was ridiculous to contend that the bill introduced recently by Senator Lane would eliminate Astoria as a port of entry. He said the measure was introduced for the purpose of eliminating obstructions to commerce in the river and that commerce could be brought to the river only by Portland and Astoria cooperating.

### Fulton Attacks Portland.

Attorney Fulton said Portland claimed credit for all the shipping in the Columbia river. He cited that a lumber vessel with over 2,000,000 feet of lumber taken on at St. Helens and Wauna with only a small amount from Portland, was cleared from Portland. He said that at no time has Portland been a friend to Astoria. It had endeavored to minimize every movement here, and now even tried to discredit the port by taking away the last vestige of its customs regulation.

### He claimed that the custom house in Astoria is a disgrace while the Portland office is a "glittering palace".

He said Astoria was just host to making a fight to get the customs headquarters removed to the mouth of the river.

### Removal of Forest Office Is Planned

#### Headquarters of Whitman National Reserve Will Be Changed to Baker Owing to Lumber Business There.

Baker, Or., March 7.—Removal of the office of the Whitman national forest from Sumpter to Baker will start this week, the office recently leased here having been remodeled and made ready for occupancy.

The office has been located at Sumpter ever since the forest reserve system was inaugurated and the change is made for the reason that the greater part of the business now consists in the sale of lumber, and Baker is the place where the business has to be handled in any event, as there are no banking facilities in Sumpter.

### The change of location brings to Baker two national forest offices, headquarters of the Minam reserve having been maintained here for several years, with Ephraim Barnes as supervisor.

### \$1,650,000 Freighter Sold to Cunard Line

#### Highest Price for Like Vessel on Pacific Coast Is Given for Boat Under Construction in San Francisco.

San Francisco, March 7.—(P. N. S.)—At a price reported to be \$1,650,000—the highest price ever paid for a freighter on this coast—a 12,000 ton vessel under construction at the Union Iron Works has been sold to the Cunard line of England. It became known in shipping circles today. This makes the third freighter purchased by the Cunard line from the Union Iron Works, the first of which will not be completed for six months.

### Recently it was reported the Cunard line had \$10,000,000 to spend for American-built ships. The purchase reported today makes \$20,000,000 worth of vessels under construction for the Cunard line on this coast.

### Annual Conference of Y. W. C. A. Held

Monmouth, Or., March 7.—The annual Y. W. C. A. conference of western Willamette valley schools was held at the Oregon normal school last week end. About 60 representatives from schools and colleges were guests of the normal association, which has an enrollment of 75. The program included talks by the following: Miss Farrham, dean of women at Pacific college; Miss Isabelle Grover, of McMinnville college; Miss Elizabeth Fox, dean of women at the University of Oregon; Miss Jessica Todd, dean of women at the Oregon normal school, and Miss Bees Owens, of the Dallas high school.

### Merit Certificate, Prison Term, Await Presidio Fire Hero

San Francisco, March 7.—(I. N. S.)—Fred L. Newsome, private in the medical corps, has a certificate of merit voted by congress awaiting him at the Presidio, but if he claims it, he will be arrested, will face a general court martial and probably will go to Alcatraz prison for a period.

Newsome helped rescue one of the children of General John T. Pershing, when fire destroyed the Pershing home at the Presidio a couple of years ago.

Corporal Walter C. Schaus, first company of the artillery corps, Fort Barry, is given a similar medal for the heroic part he played in the fire.

### CHIEF JUSTICE ISSUES ORDER THAT COUNTIES ERECT SALEM BRIDGE

#### In Writ of Mandamus Courts Are Told to Proceed With Work or Show Reason.

Salem, Or., March 7.—In a writ of mandamus issued Tuesday by Chief Justice McBride of the supreme court, the county courts of Marion and Polk counties are directed to proceed with the construction of a bridge over the Willamette river at Salem or appear in court at noon March 27 to show cause why they have not done so.

In this manner, the long-drawn-out Marion-Polk county bridge controversy is being brought to a head. A. White and Plinckney Bros. are plaintiffs in the mandamus proceedings. They are represented by Attorneys McNary & McNary.

It is contended that a bridge is a part of a county highway and the counties can be compelled to keep it in repair. As the Salem bridge has been condemned as unsafe, the purpose is to force the immediate construction of a new bridge, with the cost to be assessed to the two counties in proportion to their assessed valuation.

Both counties have raised money for a new bridge, but the two county courts have failed to agree on the type of bridge to be built. The highway commission prepared plans for a steel bridge.

### State May Compel Hospital to Vacate

#### Salem Association Must Let Contract for New Building and Pay Rent to People or Surrender Premises.

Salem, Or., March 7.—If the Salem Hospital association does not let a contract for a new hospital building by May 1, the state board of control will request the attorney general to bring proceedings to oust the association from use of its present building, which was condemned and purchased by the state a year ago.

This was decided by the board Tuesday when Governor Withycombe and State Treasurer Kay put through a resolution providing that if the hospital association has let a contract by May 1 it may continue to occupy the present building until the new one is ready by paying a rental of \$125 a month, or 6 per cent on the state's investment.

Secretary of State Olcott offered as a substitute to this motion the resolution adopted by the joint ways and means committee of the legislature, which directed the board of control to instruct the attorney general to bring proceedings to oust the association from the property within 30 days if the hospital association did not relinquish the property within that time. Withycombe and Kay refused to accept the recommendation of the ways and means committee.

### Army Camp Bonds Are Declared O. K.

Tacoma, Wash., March 7.—(U. P.)—The last obstacle to condemning land for the 70,000 acre army camp at American Lake was swept aside Tuesday when the supreme court at Olympia handed down its decision approving the \$2,000,000 bond issue.

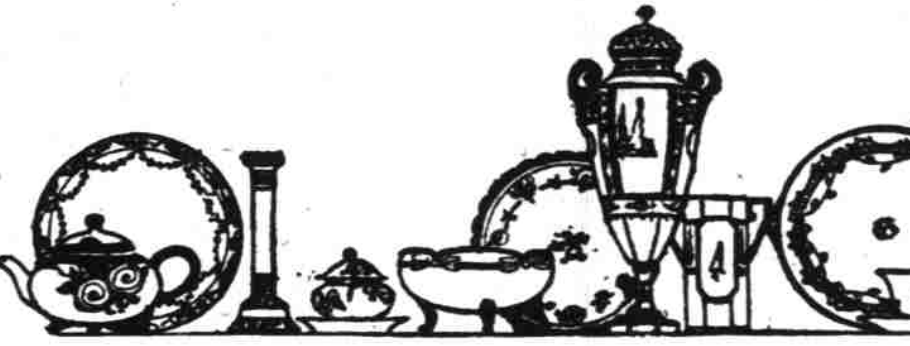
J. T. S. Lyle, special counsel for the county, will begin immediately the preparation of the condemnation suit by which the land is to be acquired. The court's decision was unanimous, quired.

### One Can Eat Spuds Every Single Meal On Beach at Waikiki

San Francisco, March 7.—(P. N. S.)—Potatoes are \$40 a ton in Hawaii. In Honolulu they can be bought by the pound at the rate of \$2 a sack. There is no shortage of potatoes in any part of the islands.

May we show you something Different In Veils! —Come to the Veiling Department. We shall not tell you what they are. You must come and see them. But—just a hint—they are Van Raelte Veils—First Floor

## Here's an opportunity to save HALF and more! 750 pieces of hand-painted CHINA at 69c



As fair as Spring herself! Blouses of silk you'll appreciate \$2.98

—There's something "different" and "interesting" in these blouses, you'll recognize the instant you see them! Crepe de chine of a very, very good quality, is the material—the colors flesh, black, navy and white. Hemstitched on the deep collar and cuffs.

—And—best of all—these waists are made specially "blousey." —Third Floor, Lipman Wolfe & Co.

What woman has not longed for one of these Smart Cretonne Shopping bags \$1.49

—Just for one day do we offer these new bags at this exceptional price, which is less than you can make them!

—The colorings are simply beautiful—and the combinations of soft shadings have been accomplished by needlework artists. Both hoop and straight bar styles, at the same price, \$1.49! —Fifth Floor, Lipman Wolfe & Co.

### INNOVATION Wardrobe Trunks The Standard of America

—When you travel with an Innovation Wardrobe, it's for all the world like traveling with your own dresser and clothes press! Every Innovation trunk is backed with the ironclad Lipman-Wolfe guarantee! —Sold in Portland only at Lipman, Wolfe & Co. Sub-Basement, Lipman, Wolfe & Co.

### Huck Towels 20c

—The great big kind that will stand all sorts of wear and laundering—the kind that will pay you to buy by the dozen! —Note the size, 19x42 inches! —Economy Basement, Lipman, Wolfe & Co.

## Economy Basement Store

"WHERE YOU PAY THE LEAST AND GET THE MOST FOR IT"

### Now comes by far the greatest sale of SERGE DRESSES we've ever held— \$7.95



—There's a mighty interesting story back of this great purchase and sale—but the dresses themselves are even more interesting; so we're going to give them all the space! —The pictures tell you more about the styles than could a whole page of words—but the serges—ah!—you must see them and feel them to really appreciate their extraordinariness! You never in the world would imagine that such serges could be put into dresses at such a low price—and it couldn't be if the maker hadn't taken a decided loss!

## Lipman Wolfe & Co.

"Merchandise of Merit Only"

—Every piece is of fine imported Feltpathic china— —Every piece worth double and many worth three and even four times 69c.

Included are salad bowls—fruit bowls—cake plates—bon-bon dishes—syrup jugs—milk jugs—chocolate pots—mayonnaise bowls—marmalade jars—celery trays—ice bowls—teapots—sugar bowls—creamer—cracker jars—mint sauce boats and comb and brush trays— —Better plan to come early, for the choicest plums have a habit of going first!—Sixth Floor, Lipman, Wolfe & Co.

### IMPORTANT ANNOUNCEMENT! The price of all MODART CORSETS will advance April 1st!

—Women who delight in wearing Modart corsets will be glad to have this advance information, in order that they may buy for future needs! —The present selling prices range from \$3.50 to \$15.00! —Stocks are remarkably complete—more complete than they've been for a long, long while! Let our expert corsetties show you just which model is best suited to your figure! —4th Floor, Lipman, Wolfe & Co.

### Ready! New skirts And 3 to 6 inches longer than they have been!

—The barrel silhouette, the jupe tonneau, graceful pleated affairs, smartly tailored skirts—Oh, we cant' tell you how many individual styles there are! Khaki Kool, chiffon taffeta, gay stripes, novel plaids, cathedral check silks, as well as the always fashionable serges, poplins and gabardines, in colors and combinations that are truly marvelous.

—Come! See these new skirts—there isn't anything in town like them—and the prices are only \$6.45 to \$15! —Third Floor, Lipman, Wolfe & Co.

### New style notes in Envelope chemise

—Marvels of daintiness, splendidly cut to fit without pulling or bagging here and there. —At 79c are longcloth chemise, trimmed with lace insertion and embroidery medallions, ribbon drawn. —At \$1.19 are fine nainsook chemise, with organdie and embroidery insets, lace and embroidery edgings. At \$1.69 the prettiest nainsook chemise, with unusually fine laces, French grey organdie medallions, and featuring empire, round and V-necks. —And at \$1.98 they're simply lovely—too many styles to attempt to describe; so you must see them for yourself! —Fourth Floor, Lipman, Wolfe & Co.

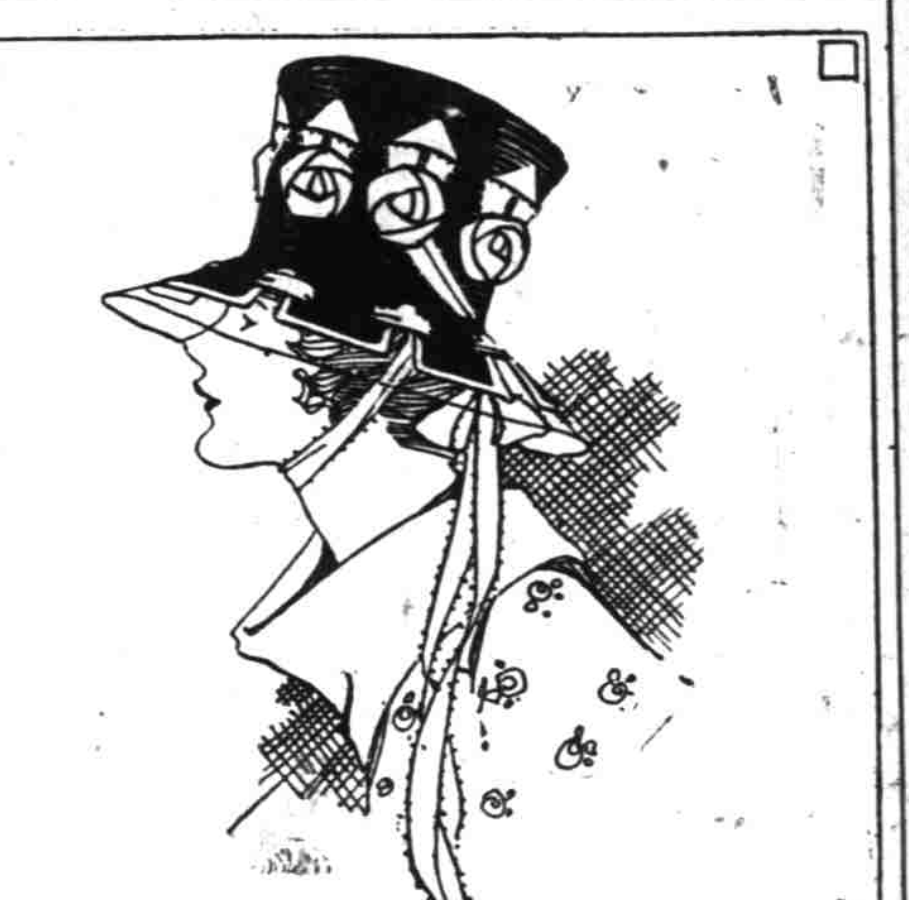
### Half-tailored Spring suit for GIRLS— Modestly priced at \$22.95

—How difficult it often is to find good, up-to-date styles that are becoming to girls and misses! These particular suits will more than come up to your expectations—for there isn't a girl in the city that wouldn't be pleased with one of these serge or poplin suits, in navy blue, desert sand or mustard. —Just a word about their style points—the jackets are fashioned with deep yokes, from which narrow box pleats fall gracefully, carefully belted in at the waist line. Skirt is correctly full, and the only trimming consists of the new fancy silk stitching and buttons. —Fourth Floor, Lipman, Wolfe & Co.

### A FREE Sewing Machine will do your Spring sewing better. \$1 Down—\$1 Week —Second Floor.

### Artists Do Our Picture Framing to Your Order

—And you'll note the difference between our framing and the ordinary framing! A most wonderful collection of new mouldings has just arrived! —Sixth Floor.



### "There's something different—very different—about the Lipman-Wolfe HATS"

—Just one of the remarks the writer overheard in the Millinery Salons yesterday. —It may have been the great assemblage of hats as a whole that inspired the remark—or it may have been the very striking wide brimmed tulle model of black lizere, which she had just that moment donned (and which she afterward purchased)—but whichever it was, she was completely won, and a glance around showed her enthusiasm was fully shared by the others who were in the Millinery Salons looking and buying!

—Every woman who has watched the Millinery situation knows she must look to this store for the new style ideas first! Right now there is an entirely new style idea ready to be given out—watch for its announcement in our advertisements the next few days!

—Our windows hold much that is of interest to every woman. —Third Floor, Lipman, Wolfe & Co.

### 19c MEN! For the Famous Notaseme sox

—Which means a clear saving of many cents a pair, because the mill sent us these sox which did not pass the close inspection of the grader! The slight imperfections will not injure the wear or looks of these sox. —They're made with double spliced soles, heels and toes. The colors are black, mode, grey, garnet, navy, natural and white. In all sizes. —First Floor, Lipman, Wolfe & Co.

### Up! Up!! UP!!! Goes King Cotton DOWN! Down!! Down!!! Go prices of these Sheets

—BUT—the price is lowered just for one day only! So be on hand early Thursday morning and supply your wants for the season to come. —Extra heavy, linen finished and free from the usual dressing. All are perfect. 72x90 inches . . . . . 79c 81x90 inches . . . . . 89c Pillow cases of the same heavy quality, 45x36 in. 23c —Second Floor, Lipman, Wolfe & Co.

### "THE MARGUERITE" Is a charming set \$1.49 for mornings. . . . .

—Not the conventional, cut-and-dried apron, but the daintiest jacket and skirt set you ever saw! Some are in plain colors, while others are of the freshest-looking black and white percales. —The jacket and bottom of the skirt are in deep scallops, bound with black and white and all white pipings. —Fourth Floor, Lipman, Wolfe & Co.

### For the baby! Crib Blankets 39c One Day Only

—The softest, downiest little blankets that you can imagine! Pinks and blues, with amusing nursery designs, that will interest the baby when he grows a little older. —Full size, 30x40 inches. And, remember, one day only at 39c! —Fourth Floor, Lipman, Wolfe & Co.

### Sale TRIMMED HATS at \$3.95

—An event that will win scores of new friends for the Basement Millinery Section! —There are all straw models—some of straw and satin combined, and others of ribbons! Hats that have every right to demand a much higher price! —Economy Basement, Lipman, Wolfe & Co.

### Table Cloths \$1.25

—The finely mercerized, highly finished damask cloths, that you and every housewife will feel proud to own. 64x72 inches is the size of these splendid cloths. —Economy Basement, Lipman, Wolfe & Co.

### Grape-Nuts IS THE WORLD OVER THE BEST FOOD OF PURE FLAVOR AND EXCEPTIONAL MERIT

"THERE'S A REASON"