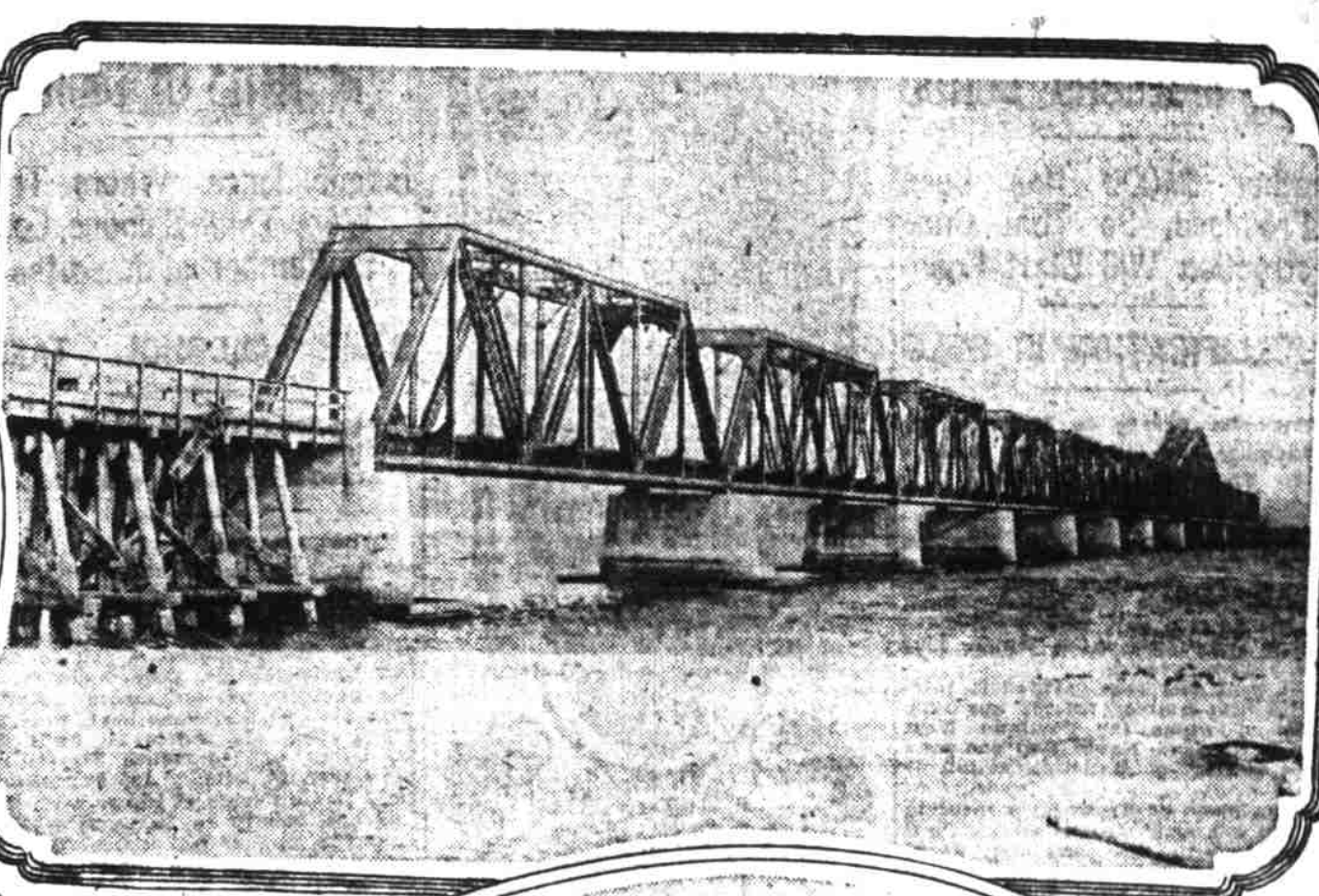
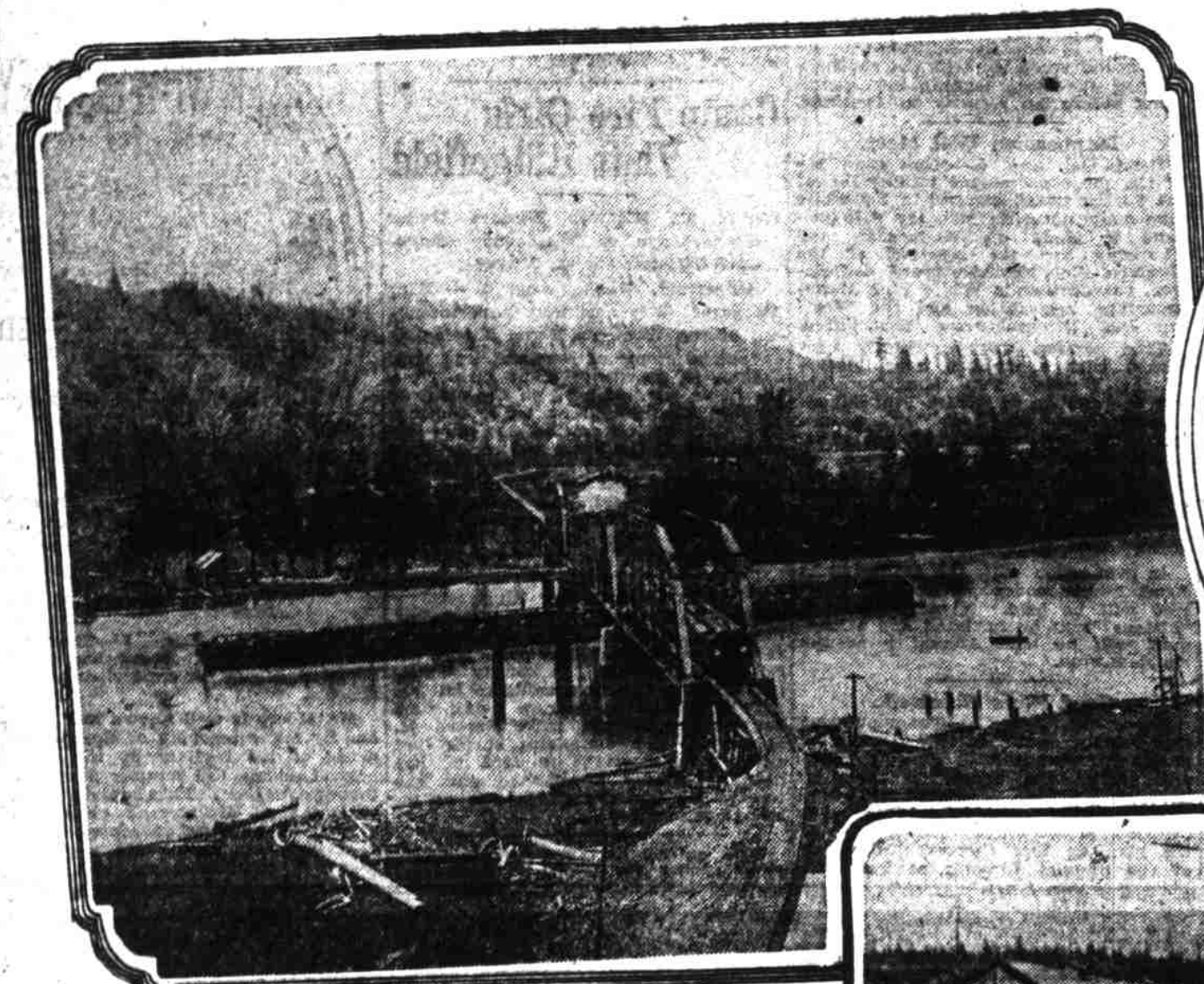
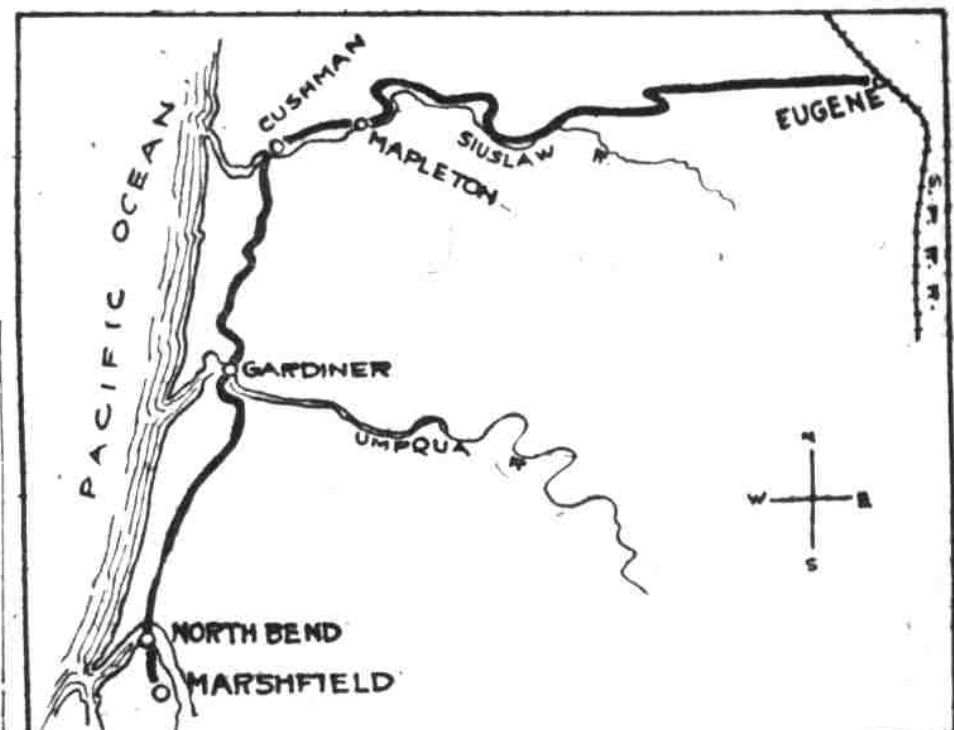
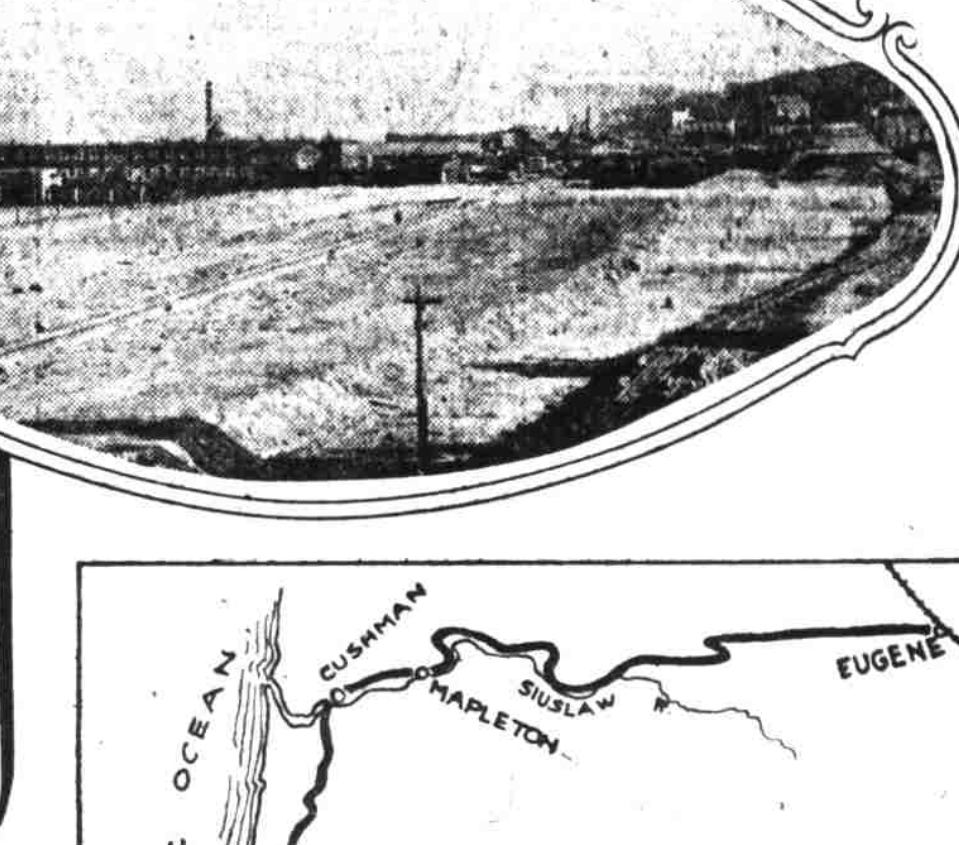
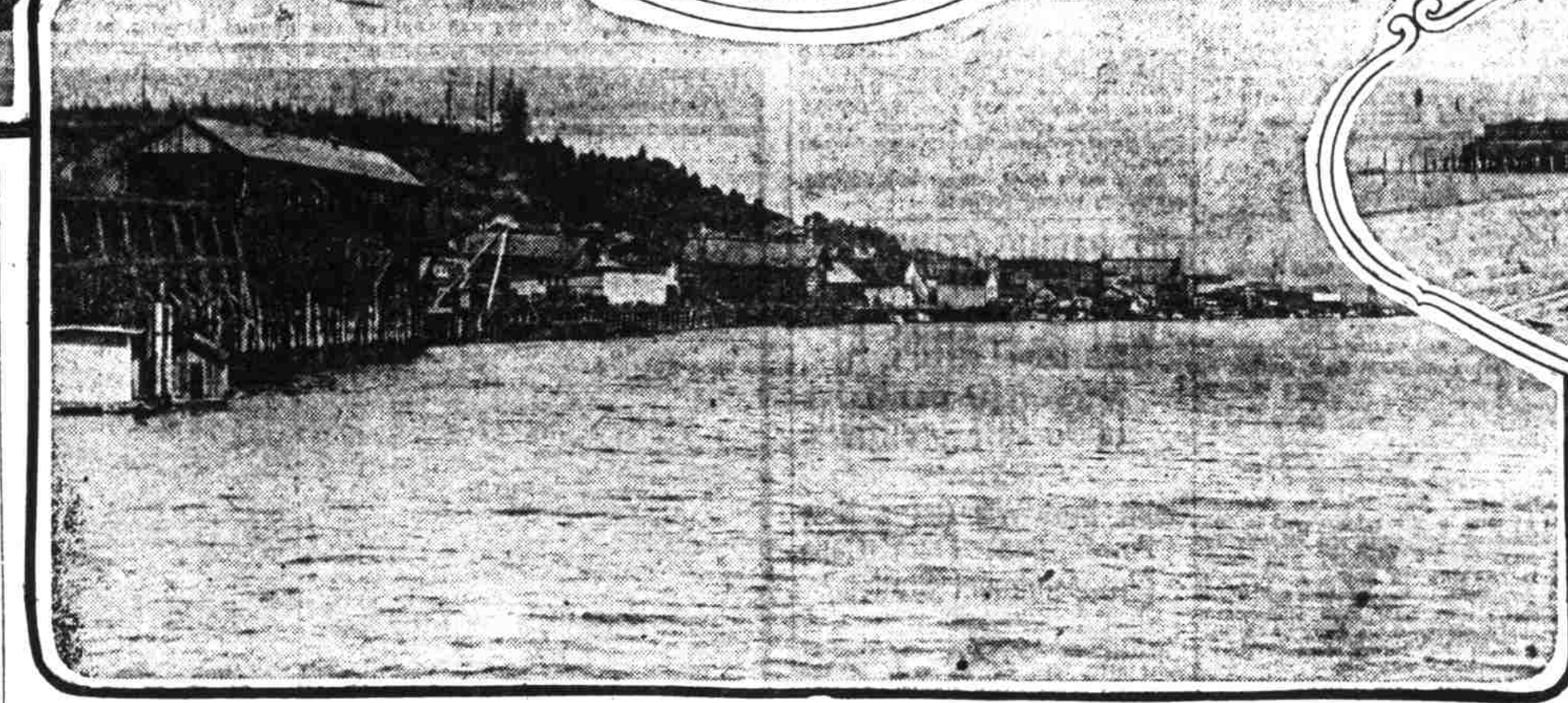


ALONG THE LINE THAT THE COOS BAY EXCURSIONISTS WILL TRAVEL



Country Through Which New Willamette-Pacific Railroad Passes Possesses Varied Natural Charms on Entire Route From Eugene to Marshfield.



Scenes along the new Willamette Pacific railroad from Eugene to Marshfield, a distance of 121.6 miles. Above, left to right—Drawbridge across the Suslaw river at Cushman, a steel structure 696 feet long; at Tilden Rock on the Suslaw river; drawbridge across Coos Bay near Marshfield that is 2208 feet long. Below, left to right—Along the waterfront at Marshfield; general view of North Bend; map showing route followed by the railroad.

MAKE YOUR RESERVATIONS NOW.
Have you made your reservation aboard The Journal Special for the Portland excursion to Coos Bay? If not, there should be no delay. Usually those who defer their decisions until the last moments find the best, or all, of the accommodations taken. It will be a trip never to be forgotten. It will be an experience that no one, particularly the Portland business man, should miss. Make reservations at The Journal Business Office.
The fare of \$2.60 covers all expense—railroad transportation, Pullman berth, meals and a home aboard the train while at Coos Bay, together with incidentals. Leave Wednesday, August 23, 11 p. m., spend Thursday, Friday and Saturday, August 24, 25 and 26, in Coos Bay; return to Portland Sunday morning, August 27.

A route of charm and a way of wonder is the new Willamette-Pacific railroad from Eugene to Coos Bay.

Part of the growing Portland enthusiasm for the Coos Bay railroad completion celebration, August 24, 25 and 26, is properly due to the attractions of the trip going and coming.

The country will be absolutely new to more than 90 per cent of the excursionists. Fully this many failed to seek it when the transportation was either by ocean voyage or stage route.

It will be Portland's first official big call upon the Coos Bay people, for Portland waited until transportation should be modernized before seeking strength of representation in the rich district.

The Coos Bay line leaves the Southern Pacific main line about a quarter of a mile north of the Eugene passenger station.

From Eugene to Veneta there is flat farming country, which between Veneta and Noti changes gradually to the foothills of the Coast Range mountains.

The mountain scenery is very beautiful. West of the summit the railroad follows the Suslaw river. It does not climb entirely through the mountains but tunnels under the summit.

Along the Suslaw.
Opposite the Swishome station is a strange rock formation called "Old Man Suslaw." In the Suslaw river and its tributaries there has for long been excellent fishing.

When the excursion reaches Mapleton it will have come practically to the head of navigation on the Suslaw river. Down in Coos county the launch frequently takes the place of the market wagon.

Suslaw bay is an attractive body of water with the town of Florence on its shore, and Glenda on the south shore. This is a country of dairying, fishing and lumbering.

After leaving Cushman the new railroad follows an arm of Suslaw bay for several miles, then plunges through a number of tunnels only to emerge upon the shores of beautiful Tillamook lake. One of these days Tillamook lake will be a famous resort. The lake is three or four miles wide and probably 10 miles long and is sur-

rounded by heavily wooded rolling hills; railroad winds along the shores of the lake for many miles. Ada, one of three stations on the lake, is the one chosen point to receive travel to and from Westlake, a summer resort.

Lake Tahkenitch, another lovely body of water so close to Tillamook that their arms seem to join. The railroad follows the shores of this lake to a point within a few miles of the Smith river.

In this vicinity the forest comes down, dark and gigantic to the railroad tracks and almost no signs of human habitation are to be found.

Gardiner Would Extend Hospitality.
Gardiner is a town on the Smith river whose people are anxious to entertain the members of the Portland excursion. It is the principal trading point for dairy ranches located along the Umpqua and Smith rivers. One of the beautiful trips of the west is to go by boat up Smith river some 25 miles. Another good trip by boat is up the Umpqua 20 miles to Scottsburg and still another down the Umpqua to Winchester bay.

First rate hunting and fishing are to be enjoyed. Reedsport is a town that has been located on the railroad and the south bank of the Umpqua river since the railroad was built. From Reedsport the railroad follows Schofield creek, passes through two long tunnels and emerges upon North and Ten Mile lakes, after which it leads through forests of small trees to Coos Bay, across which has been built a draw bridge 2268 feet long, one of the features of the trip.

North Bend, the second largest city in Coos county, is about eight miles from the mouth of Coos Bay, and Marshfield, the metropolis, is just beyond North Bend. The first day of the railroad completion jubilee will be staged in North Bend, the third in Marshfield, while the second will be devoted to trips through the county and to the beaches.

Card of Thanks.
We wish to express our sincere thanks to those who assisted during illness and at the funeral of our late husband and father, especially L. O. O. P. K. of P. O. R. and friends and neighbors. Mrs. F. A. Brownworth, Mr. and Mrs. W. R. Sherman and family. (Adv.)

National Parks Are Extolled in Detail

Department of the Interior Sets Forth Specific Charms of Each Park in Illustrated Folder.

The department of the interior recently issued a handsome National Parks portfolio. It is made up of nine booklets treating on nine of the largest national parks comprising Yellowstone, Yosemite, Sequoia, Mount Rainier, Crater Lake, Mesa Verde, Glacier and Rocky Mountain parks and Grand Canyon national monument.

Three hundred thousand copies were issued. Inasmuch as there was no government fund available for getting out the portfolio the various transcontinental railroads donated the money to cover all expenses.

In addition to containing much information of value and interest concerning the parks the portfolio also contains 240 illustrations showing the natural beauties of the parks more eloquently than words.

In an introduction Secretary Lane says in part:

It would appear from the experience of the past year that the awakening to the value of these parks has at last been realized and that those who have hitherto found themselves enticed by the beauty of the Alps and the Rhine and the soft loveliness of the valleys of France may find equal if not more stimulating satisfaction in the mountains, rivers and valleys which this government has set apart for them and for all others. It may reconcile those who think that money expended upon such luxuries is wasted, if any such there are, to be told that the sober minded traffic men of the railroads estimate that last year more than a hundred million dollars usually spent in European travel was divided among the railroads, hotels and their supporting enterprises in this country.

There is no reason why this nation should not make its scenic domain as

Court Angers Man; Tries to Kill Self

John O. Wikman Ordered to Pay Wife \$6 Week Attempts to Jump Out of Courtroom Window.

Chicago, Aug. 5.—John O. Wikman, aged 20 years, having been ordered by Judge Rufus Robinson to pay his wife \$6 a week, sought to have the order vacated. The judge refused to alter his decision.

As Wikman was leaving the court his wife asked what he was going to do. He rushed to a window of the city hall and climbed onto the ledge as though to jump. He was nine stories above Randolph street.

Court attaches pulled him from his perilous position before he could leap. For nearly an hour they tried to quiet him. Then relatives, promising to care for him, obtained his release on a \$500 bond that he would pay the \$6.

Mutterings of War Worry Cantu Little

Governor of Lower California Fixes His Own Tariff and Laws Independent of Mexico City Government.

San Diego, Cal., Aug. 5.—(I. N. S.)—Whether or not the rest of the Mexican provinces war with each other, or with the United States, appears to concern Governor Esteban Cantu, of lower California, not at all. This picturesque Mexican soldier, who a year ago last December deposed Governor Arlos and assumed the reins of government himself, has established a government in Lower California that is in reality a beneficent autocracy.

He rules capably, fixes tariff and laws to suit himself and pays no attention to Mexican chiefs who would depose him. His government is managed economically and successfully and his people are lightly taxed.

Calisco cotton growers were alarmed one Sunday last winter when they learned that a telegram from General Obregon had announced an increase from \$2.30 to \$10 a bale as export duty on cotton. They had hundreds of truckloads of unspinned cotton at the border line and the new tax would be ruinous. Governor Cantu did not seem to be particularly impressed either by the order from Obregon or by the frantic protests of the American growers. It was a business mat-

Houston Fireman Is Some Speedy Barber

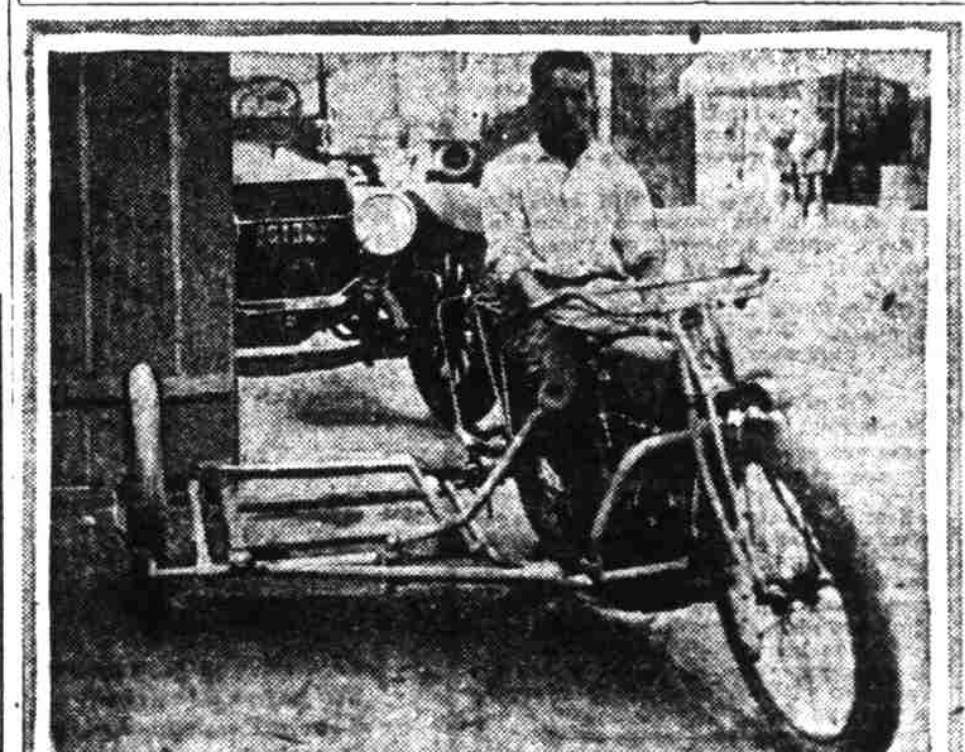
Houston, Texas, Aug. 5.—(I. N. S.)—Ed Lee, one of the husky firemen at Central fire station, is rapidly acquiring a reputation as a barber. While he was engaged in clipping horses a number of the men of the Sixty-ninth Regiment of New York stopped to look at the fire apparatus. One of them spied Mr. Lee, while acting as hair-trimmer to his team.

"Say, friend, what's the chances to get a haircut?" the soldier finally asked, after watching Lee deftly remove the surplus hair from one of the fire horses with an electric clipper.

"Fine," said Lee. As soon as Lee had finished with the steed, he called "next," and in a jiffy Mr. Militiaman had his surplus hair removed.

"Next," called Lee, and when he had finished, exactly 29 militiamen had their hair trimmed, each operation averaging one minute, ten seconds. The men were then furnished with soap and towel and gave their heads a good washing.

LAUDS OREGON SCENERY



E. B. Wagner, of Detroit, who is making an extensive motorcycle tour of the west and south.

"I have traveled throughout Europe and over all the Americas during the past 13 years but never have I seen scenery that will compare in beauty and grandeur with what you have here in Oregon."

This is the general comment of E. B. Wagner of Detroit, who is making a tour of the northwest on a motorcycle. He left Chicago last October on his present journey which has carried him through the middle states to the gulf, to Texas, New Mexico, Colorado, Wyoming, Utah, Idaho and Oregon. On a direct route Mr. Wagner has traveled 4500 miles. Side trips which he has taken will run his mileage up to almost an equal distance.

"In coming into Portland," he said, "I spent several days on the highway and climbed some of the commanding points, notably Angel's Rest above Cooney falls. I have never seen such views in all my travels."



Camping and Fishing

CAMPING AND FISHING SEASON IS HERE AT LAST AND HUNDREDS ARE TAKING ADVANTAGE OF THIS BEAUTIFUL WEATHER TO TAKE THEIR OUTINGS ALONGSIDE OF SOME MOUNTAIN STREAM WHERE THERE IS GOOD FISHING.

BEFORE YOU MAKE YOUR TRIP YOU SHOULD VISIT OUR STORE AND SEE WHAT WE HAVE TO OFFER IN THE WAY OF CAMPING-OUT GOODS.

TENTS OF ALL SIZES AND SHAPES, THAT WILL ACCOMMODATE ONE PERSON OR LARGE ENOUGH FOR A DOZEN; COTS AND TABLES THAT FOLD UP AND OCCUPY BUT LITTLE SPACE; HAMMOCKS, BEDS, STOOLS, CHAIRS, STOVES AND COOKING UTENSILS EXPRESSLY DESIGNED FOR CAMPERS; ALADDIN, DUXBACK AND CAMP-IT OUTING CLOTHING FOR MEN AND WOMEN REPRESENT THE BEST ON THE MARKET. IF YOU ARE GOING "HIKING," GET A PAIR OF OUR BASS-MOC-CASIN OUTING SHOES—THEY'RE ALREADY "BROKE IN" AND WILL GIVE THE FINEST OF SERVICE. FISHING TACKLE IS ONE OF OUR SPECIALTIES—OUR STOCK IS SO LARGE AND VARIED THAT WE CAN SUPPLY THE NEEDS OF EVERY FISHERMAN IN THE QUALITY AND PRICED GOODS HE DESIRES. IT WILL BE YOUR PLEASURE TO MAKE YOUR SELECTIONS FROM THE LARGEST AND MOST COMPLETE STOCK EVER SHOWN IN THE WEST. CALL AND SEE US.

Alpine Stocks Bathing Suits

Honeyman Hardware Company
PORTLAND'S LARGEST HARDWARE AND SPORTING GOODS STORE
FOURTH AND ALDER STREETS

DRUGS
WOODWARD CLARKE CO.
DRUGS

Enlarged or Varicose Veins

are often a source of much discomfort or pain—at times dangerous, requiring surgical attention. Relief, often permanent, is gained by wearing our fitted-to-measure Pure Silk and Rubber Stockings, woven on our own looms, finished and fitted by skilled attendants (men and women), who bring to this branch of our business the requisite training and knowledge. We knit all our Elastic Hosiery in our factory. It is made to your order and a perfect fit is absolutely guaranteed. Costs you no more, and usually less, than elsewhere, while having all the advantages of goods made to your order.

Write or call for our illustrated booklet, giving full information and self-measure blank. Residence calls if requested.

Comfortable, Easy-Running

Wheel Chairs

for the Invalid, Convalescent or Cripple, sold or rented on easy terms.

Arch Props

to support the falling or broken arch, to stop pains in the calf of the leg, to make walking easier, are practical.

We make a specialty of accurate fitting.

Price \$2 to \$3.50 Per Pair

Woodward Clarke Co.
1000 MARKET STREET, PORTLAND, OREGON
MARSHALL, 4700—HOME A 5171