

ALBANY IS HUB CITY; RAILROAD AND WATER SERVICE FEATURED

New Owners of Furniture Factory Plan to Have Their Plant Running Soon.

INDUSTRIES ARE NAMED

Loganberry Juice Factory Important Feature; Peppermint Industry Is Coming to the Front.

By Fred Lockley

Albany, Or., June 20.—Albany is well called the Hub city of the Willamette valley. You will still meet many old time residents of the city who remember when Albany's only access to markets and her only access to the outside world was by water transportation on the Willamette river.

Today rail lines radiate in all directions from Albany, giving Albany adequate transportation facilities for a city many times the present size of Albany.

Albany is one of the principal cities in the Willamette valley, on the main line of the Southern Pacific system. From Albany a branch line goes eastward to the Cascade mountains. The original destination of this line was Boise, but lack of funds compelled its promoters to stop near Milwaukie on the western slope of the Cascades.

Other Lines Listed.

Another branch line goes to Lebanon connecting at Tullman with the Woodburn-Natron branch of the Southern Pacific. Connection is made by a branch line with the Portland, Eugene & Eastern. It is on the main line Oregon Electric railway and connection is made by a branch line to Corvallis with the west side line of this system. So today, in place of the coming of an occasional boat and the arrival and departure of the overland stage, Albany has over 40 passenger trains, which would make it a city of leisure who went down to the depot to see the train come in, a very busy individual indeed if he went down to the depot to see all of the arriving or departing passenger trains daily.

Albany is rejoicing over the fact that the Union Furniture factory, which shut down two years ago, will soon be adding its quota to the industry, the payroll and consequent prosperity of the city. Fletcher Linn and W. E. Flanders, the well known furniture men of Portland, have purchased the plant and will soon be turning out furniture. Fletcher Linn has been making furniture for more than 20 years in Portland, and W. E. Flanders was superintendent of the Carman Furniture factory of Portland, so Albany has the ability and experience at the head of the enterprise—men who will make it of a success.

Buildings Are Remodeled.

The old mill building remodeled, new machinery has been secured, a new boiler and a new dry kiln installed and soon Albany will begin shipping furniture throughout the Northwest and into the coast. The turning out of furniture in oak or mahogany will be the material used in the manufacture of the factory's output.

On June 11 a carload of machinery arrived for the Albany Loganberry Juice company.

The coming of the Loganberry juice factory to Albany means much not only to Albany but to the farmer in this county. The company is contracting for Loganberries at \$50 per ton and at this rate the grower should realize from \$150 to \$250 per acre for his crop.

The Loganberry juice factory is installing about two worth of machinery in its plant.

This includes an engine and boiler, steam jacketed process tanks, bottle filling and crown capping machines and other necessary.

Year two products only will be manufactured. Loganberry syrup for soda fountains and Loganberry juice to be used as a beverage. The company will manufacture from 200 to 300,000 gallons of juice this season. The season starts about July 1.

Peppermint Raising Factor.

Another industry tributary to Albany that should grow into a permanent and valuable contribution toward the prosperity of Linn county is the growing of peppermint. Last year the acreage was increased to 40 acres and the yield varied from 37 to 72 pounds of oil of peppermint. It grows best on the sandy loam soil along the river. This soil is easily worked, contains plenty of plant food and the crop matures early.

It costs about \$30 an acre to grow peppermint and with an average yield of 50 pounds of oil of peppermint to the acre at a price of from \$2 to \$2.50 a pound for the oil, there is good money in the country's best. The largest city in Linn county.

Its population is not far from 7500. Lebanon, Brownsville, Halsey, Harrisburg and Scio are all growing timber in Linn county. Linn county is larger than the state of Delaware. It contains 2243 square miles. Of its total area of 1,435,529 acres, about 200,000 acres are now in cultivation. There is a large amount of potential horsepower that can be developed on the Santiam and Calapooya rivers.

The western part of Linn county lies in the Willamette valley while at least two-thirds of the area of the county is mountainous and heavily timbered. It is estimated that there is at least 25,000,000,000 feet of merchantable standing timber in the county.

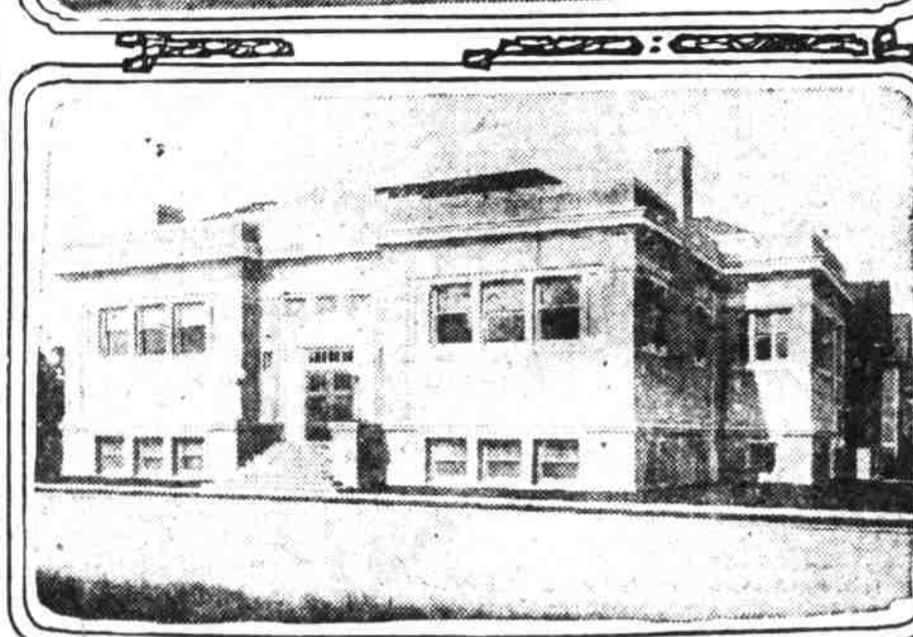
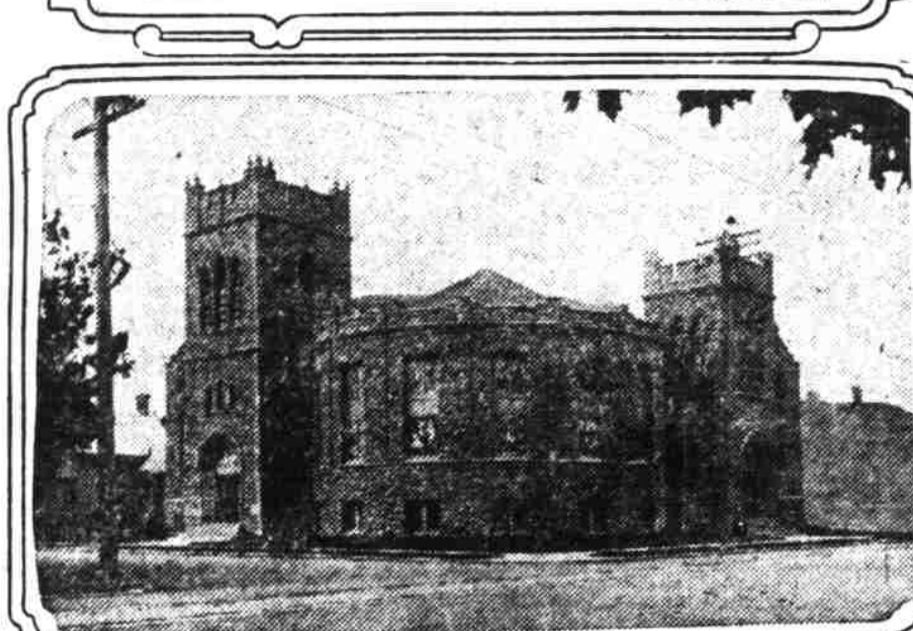
Richness Is Noted.

One secures a good idea of the richness of the county by looking over the list of the outgoing freight from Albany. The list includes such products as more than 100 carloads were shipped during one season; clover seed, \$150,000 worth of clover seed is shipped from Albany annually; lumber, hops, wool, mohair, butters, eggs, furniture, Cotswold bucks, fruit, walnuts, berries and so on through a long list of products.

From the standpoint of attractiveness to the tourist and summer vacationist Linn county takes high rank. There is splendid fishing and hunting on both branches of the Santiam river as well as in Marion lake, Lost lake, Fish lake, Clear lake and Lava lake.

There is inspiring scenery, splendid mountain climbing as well as health and pleasure in the Mount Jefferson country and around Mount Washington and Three Fingers Jack. Mount

BUSINESS IN WILLAMETTE VALLEY CITY IS THRIVING



Above—Street scene at Albany. Center—Presbyterian church. Below—Albany Public Library.

Jefferson is 10,500 feet high, Mount Washington 8500 and Three Fingers Jack 5500 feet. Agriculturally, commercially, educationally and scenically Linn county is rich in her resources.

Snow Fall Reported In Blue Mountains

Streams Are Rising Rapidly Near Baker—Pine Creek Dam Goes Out Inundating Large Area.

Baker, Or., June 21.—A snowfall was general Tuesday throughout the Blue mountains with several hard hail storms in this city. Streams are rising rapidly and some trouble is feared. At Prairie City the Sumpter Valley railroad depot is surrounded by water and almost inaccessible, except by boat. The Pine Creek dam went out, inundating a portion of the west side of Baker valley. Mountain roads are somewhat cut up and bridges weakened at some places.

Court Officer Being Sought.

Huntsville, Ala., June 21.—(U. P.)—Charles M. Niles, circuit court clerk, was captured yesterday afternoon and charged with being implicated in the murder of Justice W. T. Lawlor, whose body was found in the Tennessee river near here Saturday.

Second Floor

Gill's

Third and Alder St.

F. D. LINDSLEY, Prop.

Locksley Hall

SEASIDE, OREGON.

Under new and experienced manager. Renovated and refurnished. Clean and attractive. Overlooks the ocean. Airy, comfortable rooms. Excellent service. For rates address Lillian M. PLYMALLE, Seaside, Or.

Astoria's Leading Garage

The Columbia River highway will be open this summer from Portland to Astoria. When you come to Astoria we are prepared to furnish you gas, oil or service at reasonable rates. Only skilled mechanics employed. Leave your car here when you go to the Beach resorts. Opposite Hotel Weinhart. WESTERN MOTOR CAR COMPANY, Astoria, Oregon.

THE SHELBURNE

SHELBURNE STATION NORTH BEACH

All modern improvements—quiet and restful—justly famous for its service and appointments. In sight and sound of the ocean. Long Distance phone in hotel. Special rates for families. Buy your tickets to Shelburne Station. Address T. J. Hoare, Prop., Seaview, Wash.

THE MOST POPULAR RESORT ON NORTH BEACH

OCEAN PARK

Furnished Cottages and Tents for Rent. Apply at THE CLARK, or L. A. BEECHER, the Expressman. He meets every train.

Attention, Campers!

SECURE YOUR CAMP LOCATION NOW AT

Columbia Beach

Every accommodation for your comfort and convenience.

28-minute ride from the city. Finest bathing beach in the northwest. Beautiful wooded island of 320 acres. Better than the seashore.

TERMS REASONABLE.

Apply COLUMBIA BEACH AMUSEMENT CO. 3187 HENRY BLDG.

YOUR MONEY'S WORTH OR YOUR MONEY BACK

The Ludwig Piano

Made in the most modern and perfectly appointed of factories, equipped with every device for labor saving and economy in manufacture, built by the highest skilled labor only, the Ludwig offers more real value in tone, finish, design and permanent usefulness than any piano at or near its cost. For more than twenty years the Ludwig has been the leading medium-priced piano on the Coast. Our stock of Ludwigs is at all times complete.

YOUR MONEY'S WORTH OR YOUR MONEY BACK

The Niley B. Allen Co.

Player Pianos, Music Rolls, Victrolas and Records

MORRISON STREET AT BROADWAY

Other Stores—Vancouver, San Francisco, Oakland, Sacramento, San Jose, Los Angeles, San Diego and Other Coast Cities.

MEIER TELLS WHY HE FAVORS SURVEY FOR NEW ROAD INTO CITY

Letter to Highway Commission Says Producers of Valley Are Asking for It.

IS DEVELOPMENT PLAN

Reply to Protest Filed by S. Benson When Matter Was Given First Consideration by the Work.

Salem, Or., June 21.—Defense of the proposition to have a survey made of a connecting link from Portland to the state highway system of the Willamette valley was voiced in a letter received Tuesday by the state highway commission from Julius L. Meier of Portland. This letter was written in response to a protest made by S. Benson of Portland against the proposed survey of the highway. Mr. Meier, as chairman of the special committee of Portland business men and officials of the grange, had requested the cooperation of the state highway commission in carrying out the work.

"The movement that I inaugurated to get a proper connection between a state highway system for the Willamette valley and the city of Portland was at the instance of the producers of the territory affected," says Meier in his letter. "Members of the state grange called upon me and urged that the business men of the city unite with them in securing the end stated. We have canvassed the situation thoroughly. Numerous studies of the existing highways, their grades and of the system of connection with the main arteries of travel, etc. have been gone over. As a result of these studies it has become apparent to us that no line of communication at present existing gives the connection between the city and the great producing part of the state that is needed.

About the Boulevard.

"Reference is made to the Terwilliger boulevard as the city's connecting link. This highway was intended as a park drive. If it may be adapted to the requirements of automobile freight traffic, and if the grades and other things that the city of Portland will insist upon do not conflict, all well and good, but to determine whether this drive or any other line is the best we must have a survey by the city or county within our corporate limits and by the state without the corporate limits to determine whether a proper connection can be established.

"The grange interests who desire to reach Portland with a new mode of locomotion known as the automobile truck and who feel that this new factor is one of the greatest importance to the farmer in trying to reach the consumer with his products, feel that their desire is not fully appreciated by the city.

"The state is so eager to reach the city under better highway conditions that it is merely inviting us to debar what will be our permanent roads from the heart of the city to the State Wants to Know.

"The state is so eager to reach the city under better highway conditions that it is merely inviting us to debar what will be our permanent roads from the heart of the city to the State Wants to Know.

Second Floor

Gill's

Third and Alder St.

F. D. LINDSLEY, Prop.

Locksley Hall

SEASIDE, OREGON.

Under new and experienced manager. Renovated and refurnished. Clean and attractive. Overlooks the ocean. Airy, comfortable rooms. Excellent service. For rates address Lillian M. PLYMALLE, Seaside, Or.

Astoria's Leading Garage

The Columbia River highway will be open this summer from Portland to Astoria. When you come to Astoria we are prepared to furnish you gas, oil or service at reasonable rates. Only skilled mechanics employed. Leave your car here when you go to the Beach resorts. Opposite Hotel Weinhart. WESTERN MOTOR CAR COMPANY, Astoria, Oregon.

THE SHELBURNE

SHELBURNE STATION NORTH BEACH

All modern improvements—quiet and restful—justly famous for its service and appointments. In sight and sound of the ocean. Long Distance phone in hotel. Special rates for families. Buy your tickets to Shelburne Station. Address T. J. Hoare, Prop., Seaview, Wash.

THE MOST POPULAR RESORT ON NORTH BEACH

OCEAN PARK

Furnished Cottages and Tents for Rent. Apply at THE CLARK, or L. A. BEECHER, the Expressman. He meets every train.

Attention, Campers!

SECURE YOUR CAMP LOCATION NOW AT

Columbia Beach

Every accommodation for your comfort and convenience.

28-minute ride from the city. Finest bathing beach in the northwest. Beautiful wooded island of 320 acres. Better than the seashore.

TERMS REASONABLE.

Apply COLUMBIA BEACH AMUSEMENT CO. 3187 HENRY BLDG.

General Information

Trains Now Leave the North Bank Station for

At 8:30 a. m. and 6:30 p. m. arriving at the sea at 12:30 and 10:30 p. m. On Saturday train departs at 2 p. m. returning Monday from Seaside at 8:30 a. m. arriving in Portland at 12:25 p. m.

SEASIDE

Is the Ocean City with the outstretched hands and open heart. If you ever go there once you'll continue your visits the rest of your life. Every oceanic enjoyment and every oceanic pleasure is found at

Citizens there are glad to answer letters of inquiry concerning their town. Write to any of these people for such information as you desire, and you will receive prompt reply:

DAN J. MOORE, Hotel Moore, HOTEL MEARS.

LEWIS & CO., Druggists, next to F. O. GODFREY BROS., Sporting Goods.

J. E. GATES, Stationery.

A. R. WASSER CO., General Merchandise.

W. L. KENNEY, Men's Furnishings.

E. A. PRICE, Meat Market.

BEYOND BAZEL, Baker.

J. B. CALLAHAN, Cafe and Cigars.

GEORGE IRWIN.

MISS EMILY DAMANN, Necanicum Hotel.

F. B. LINDSLEY, Colonial Hotel.

ALEX GILBERT, Real Estate.

R. T. MOSS, Dentist.

WILLIAMS BROS., Garage.

GELNES & WHEATLEY, General Merchandise.

G. E. METTER, White Lunch Cafe, 499 Broadway.

GEORGE H. SMITH, Garage.

SEASIDE DRUG CO.

SEASIDE LIGHT & POWER CO.

Or ask the Spokane, Portland & Seattle railroad, depot Tenth and Hoyt streets, for its literature. It will be mailed free.

CLATSOP BEACH

WHERE TO STAY AT SEASIDE

PACIFIC VIEW HOTEL—Faces ocean; homelike; airy rooms; write for rates.

HOTEL MEARS—Strictly modern.

\$1 up. Large, airy rooms. John Mears.

THE MORSE—Furnished cottages, \$7-\$10 week. Free light and water.

HOTEL MCGUIRE—Neatly furnished rooms; 2 blocks from depot; 75c up. Mrs. Olive McGuire.

HOTEL HARLOW—Overlooking ocean. European plan. Free auto from depot.

CLATSOP BEACH

WHERE TO STAY AT SEASIDE

PACIFIC VIEW HOTEL—Faces ocean; homelike; airy rooms; write for rates.

HOTEL MEARS—Strictly modern.

\$1 up. Large, airy rooms. John Mears.

THE MORSE—Furnished cottages, \$7-\$10 week. Free light and water.

HOTEL MCGUIRE—Neatly furnished rooms; 2 blocks from depot; 75c up. Mrs. Olive McGuire.

HOTEL HARLOW—Overlooking ocean. European plan. Free auto from depot.

CLATSOP BEACH

WHERE TO STAY AT SEASIDE

PACIFIC VIEW HOTEL—Faces ocean; homelike; airy rooms; write for rates.

HOTEL MEARS—Strictly modern.

\$1 up. Large, airy rooms. John Mears.

THE MORSE—Furnished cottages, \$7-\$10 week. Free light and water.

HOTEL MCGUIRE—Neatly furnished rooms; 2 blocks from depot; 75c up. Mrs. Olive McGuire.

HOTEL HARLOW—Overlooking ocean. European plan. Free auto from depot.

CLATSOP BEACH

WHERE TO STAY AT SEASIDE

PACIFIC VIEW HOTEL—Faces ocean; homelike; airy rooms; write for rates.

HOTEL MEARS—Strictly modern.

\$1 up. Large, airy rooms. John Mears.

THE MORSE—Furnished cottages, \$7-\$10 week. Free light and water.

HOTEL MCGUIRE—Neatly furnished rooms; 2 blocks from depot; 75c up. Mrs. Olive McGuire.

HOTEL HARLOW—Overlooking ocean. European plan. Free auto from depot.

CLATSOP BEACH

WHERE TO STAY AT SEASIDE

PACIFIC VIEW HOTEL—Faces ocean; homelike; airy rooms; write for rates.

HOTEL MEARS—Strictly modern.

\$1 up. Large, airy rooms. John Mears.

THE MORSE—Furnished cottages, \$7-\$10 week. Free light and water.

HOTEL MCGUIRE—Neatly furnished rooms; 2 blocks from depot; 75c up. Mrs. Olive McGuire.

HOTEL HARLOW—Overlooking ocean. European plan. Free auto from depot.

CLATSOP BEACH

WHERE TO STAY AT SEASIDE

PACIFIC VIEW HOTEL—Faces ocean; homelike; airy rooms; write for rates.

HOTEL MEARS—Strictly modern.

\$1 up. Large, airy rooms. John Mears.

THE MORSE—Furnished cottages, \$7-\$10 week. Free light and water.

HOTEL MCGUIRE—Neatly furnished rooms; 2 blocks from depot; 75c up. Mrs. Olive McGuire.

HOTEL HARLOW—Overlooking ocean. European plan. Free auto from depot.

CLATSOP BEACH

WHERE TO STAY AT SEASIDE

PACIFIC VIEW HOTEL—Faces ocean; homelike; airy rooms; write for rates.

HOTEL MEARS—Strictly modern.

\$1 up. Large, airy rooms. John Mears.

THE MORSE—Furnished cottages, \$7-\$10 week. Free light and water.

HOTEL MCGUIRE—Neatly furnished rooms; 2 blocks from depot; 75c up. Mrs. Olive McGuire.

HOTEL HARLOW—Overlooking ocean. European plan. Free auto from depot.

CLATSOP BEACH

WHERE TO STAY AT SEASIDE

PACIFIC VIEW HOTEL—Faces ocean; homelike; airy rooms; write for rates.

HOTEL MEARS—Strictly modern.

\$1 up. Large, airy rooms. John Mears.

THE MORSE—Furnished cottages, \$7-\$10 week. Free light and water.

HOTEL MCGUIRE—Neatly furnished rooms; 2 blocks from depot; 75c up. Mrs. Olive McGuire.

HOTEL HARLOW—Overlooking ocean. European plan. Free auto from depot.

CLATSOP BEACH

WHERE TO STAY AT SEASIDE

PACIFIC VIEW HOTEL—Faces ocean; homelike; airy rooms; write for rates.

HOTEL MEARS—Strictly modern.

\$1 up. Large, airy rooms. John Mears.

THE MORSE—Furnished cottages, \$7-\$10 week. Free light and water.

HOTEL MCGUIRE—Neatly furnished rooms; 2 blocks from depot; 75c up. Mrs. Olive McGuire.

HOTEL HARLOW—Overlooking ocean. European plan. Free auto from depot.

CLATSOP BEACH

WHERE TO STAY AT SEASIDE

PACIFIC VIEW HOTEL—Faces ocean; homelike; airy rooms; write for rates.

HOTEL MEARS—Strictly modern.

\$1 up. Large, airy rooms. John Mears.

THE MORSE—Furnished cottages, \$7-\$10 week. Free light and water.

HOTEL MCGUIRE—Neatly furnished rooms; 2 blocks from depot; 75c up. Mrs. Olive McGuire.

HOTEL HARLOW—Overlooking ocean. European plan. Free auto from depot.

CLATSOP BEACH

WHERE TO STAY AT SEASIDE

PACIFIC VIEW HOTEL—Faces ocean; homelike; airy rooms; write for rates.

HOTEL MEARS—Strictly modern.

\$1 up. Large, airy rooms. John Mears.

THE MORSE—Furnished cottages, \$7-\$10 week. Free light and water.

HOTEL MCGUIRE—Neatly furnished rooms; 2 blocks from depot; 75c up. Mrs. Olive McGuire.

HOTEL HARLOW—Overlooking ocean. European plan. Free auto from depot.

CLATSOP BEACH

WHERE TO STAY AT SEASIDE

PACIFIC VIEW HOTEL—Faces ocean; homelike; airy rooms; write for rates.

HOTEL MEARS—Strictly modern.

\$1 up. Large, airy rooms. John Mears.

THE MORSE—Furnished cottages, \$7-\$10 week. Free light and water.

HOTEL MCGUIRE—Neatly furnished rooms; 2 blocks from depot; 75c up. Mrs. Olive McGuire.