

# VARIOUS RESOURCES OF PACIFIC COUNTY, WASH., ARE NOTED

## Fishing, Oystering and Cranberry Raising Among Chief Business Enterprises.

### TIMBER IS PLENTIFUL

#### North Beach Summer Resort Incidental to Great Diversity of Attractions in This Section.

By Fred Lockley.

Nahcotta, Wash., May 26.—Nahcotta is the northern terminus of the narrow gauge line that runs for 26 miles along North Beach from Megler on the north bank of the Columbia river. It is located on Willapa bay and is about a mile distant from the ocean. Farther up on Willapa bay is South Bend, the county seat of Pacific county. Daily boats ply between South Bend and Nahcotta. A large part of Nahcotta's trade consists in handling the oysters obtained in the bay. Portland is the principal market for the oyster industry. Some idea of the extent of the sea food industry can be had when it is realized that the little village of Tokeland on Tokopoint near the entrance of the harbor, ships nearly \$100,000 worth of crabs each year to the larger northwestern cities. The Willapa bay district is a fine fishing country.

**Fishing Is Good.**

Ten rivers empty into Willapa bay and these, with their tributary streams, afford the trout fisher splendid sport.

Pacific county has a mixed population as is the case in most districts where fishing is one of the important industries. The county has a population of approximately 18,000. There are a good many Finns and Greeks engaged in the oyster industry. It is conservatively estimated that there are at least 25,000 acres of rich tide lands on Willapa bay and its tributary rivers. The soil of this "made" land is rich and excellently adapted to truck farming or dairying.

There are about 4000 acres of cranberry bog land that can be utilized. There are about 15,000 acres of oyster grounds, so it is easy to see that there is plenty of room for the producer and the worker in Pacific county.

**Timber—**there is more than 12,000,000 feet of standing timber in the county—oysters— a million dollars' worth of oysters are marketed annually—salmon, hay, cranberries, fruit, butter, all contribute toward the \$37,413,510 worth of taxable property in the county.

**Assessed Value Less.**

While this is the actual value of the taxable property the assessed value is much less, being \$15,823,341. South Bend and Raymond are the principal cities in Pacific county. South Bend has a population of about 4000, while Raymond is somewhat larger. Raymond has a population of about 3000 and has a number of modern and up-to-date city. The summer resort industry is one that will increase in volume and value year by year. Pacific county has in North Beach, an asset of incalculable value. It is an ideal summer resort district, whose products, recreation, health and climate will always be in demand.

# ARE OFFICERS ABLE TO WELD A CHAIN ABOUT BENNETT THOMPSON?

(Continued From Page One)

Washington county says that he has witnesses to prove that Thompson was at the home at about 6:30 o'clock Sunday night, the night before the murder was committed. Sheriff Reeves says that Thompson is thoroughly familiar with the country. His brother, James Thompson, lives at Middleton a few miles west of the Jennings' home.

**The Hurlbert Election Card.**

While being searched at the city jail shortly after his arrest, Thompson took from his pocket a crumpled election card of Sheriff Hurlbert. He handed this to Detective Snow, saying, "Keep this. This is the card Deputy Sheriff Ward gave me."

Deputy Sheriff Ward says he saw Thompson on the street at about 6 o'clock Monday night, the night of the murder, and gave him an election card. Ward also says that Thompson was carrying a package which appeared to contain a piece of metal. Ward says the object was about two or two and a half feet long, and that the end of it protruded from the end of the paper in which it was wrapped. A piece of

# Special Train Service

Saturday, also Monday, May 29, for

# DESCHUTES ANGLERS

Fish Fry at Vanola Tuesday!

# OREGON TRUNK RY.

Central Oregon Line

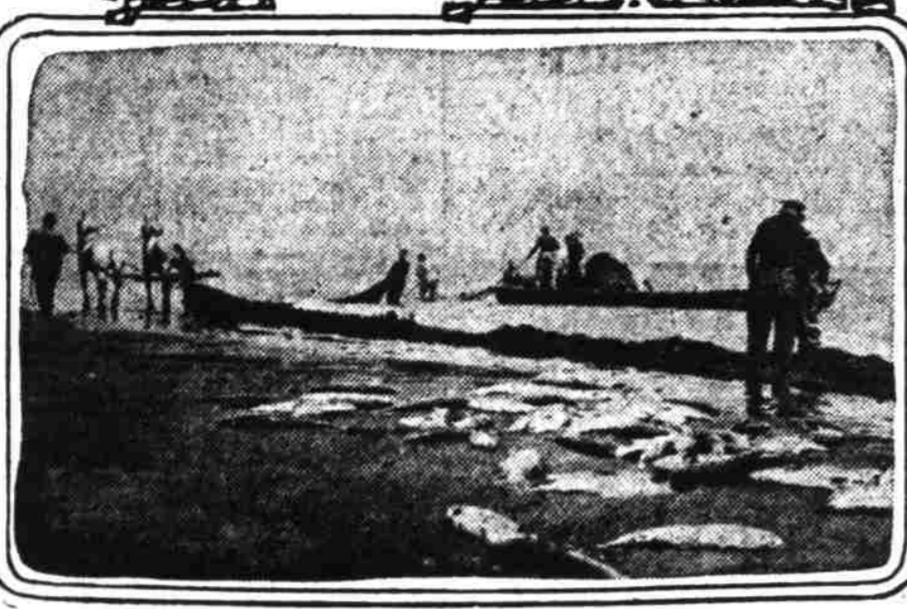
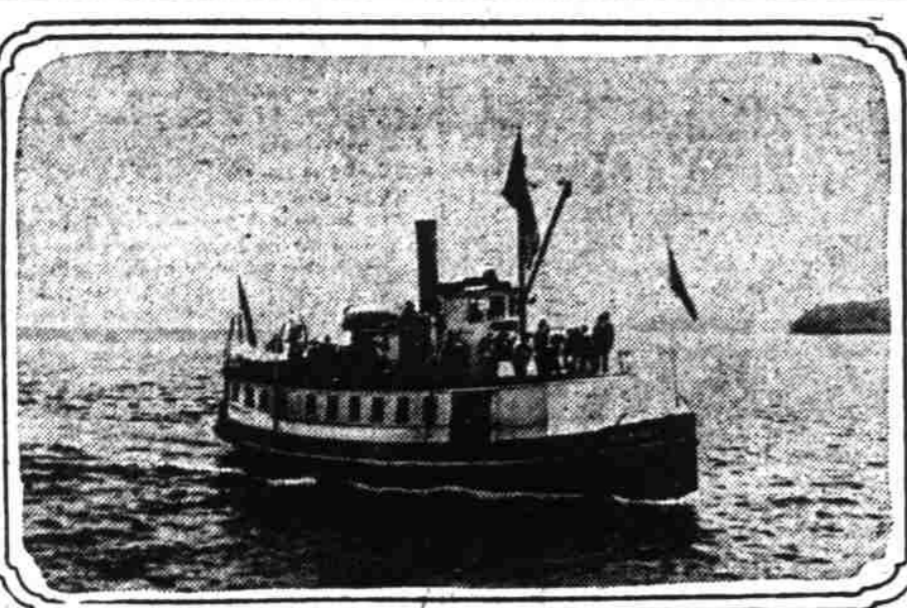
Every Saturday, also Monday, May 29 (account Decoration Day), North Bank Central Oregon train will leave Fallbridge 12:50 A. M., and will arrive North Junction 4:30 and South Junction 5 A. M., Saturdays only, to accommodate anglers. Returning, train will leave Bend 6:30 P. M. Sunday also Tuesday, May 30, reaching all canyon points earlier, arriving Fallbridge 2 A. M. Arriving time Portland 8 A. M., unchanged.

Tourist sleeping car (berths \$1 each way) on train 8, leaving Portland 6 P. M. North Bank Limited, leaving Portland 7:10 P. M., connects with Oregon Trunk train at Fallbridge.

Latest reliable fishing bulletins.

City Ticket Office, 5th and Stark. Broadway 920. A-6674.

# SEA FOOD INDUSTRY IS FORGING AHEAD RAPIDLY



Steamer Shamrock, nearing Nahcotta, Wash. Below—Catching salmon by seine on the Columbia river.

wrapping paper, creased as though it had been wrapped around a piece of metal, was found in the automobile. An election card of Sheriff Hurlbert was found early Wednesday morning, the day of Thompson's arrest. The card was spattered with blood, and was found along with Ristman's hat, lap robe and a bloody and graphite covered shirt sleeve cuff on the north side of the road, a short distance west of the Jennings home. In the Journal of Wednesday, May 17, nothing was said of the finding of the blood spattered card.

**Thompson Washes Clothes.**

On Thursday morning Thompson was taken to Hillsboro by Sheriff Reeves. He was apparently calm and unperturbed. The same day Sheriff Reeves and Deputy Sheriff Phillips talked with James Thompson, the brother. He said that he had driven to Oak Grove Tuesday, following the murder, and that he had visited his father, Bennett Thompson, at his home on Forty-second avenue shortly before noon the next day (Wednesday). James Thompson said that he found his brother washing some clothes.

At that time James Thompson had not heard of the murder, according to his story, but learned of it later in the afternoon from those at a stable where he had taken his horse. He says he went back to his brother's house to ask him about the murder and found that his brother had gone to visit his father in St. Johns.

# Remnants of Shirt Found.

Thursday, the day following Thompson's arrest, searchers found the remnants of a shirt presumed to have been worn by the murderer. This shirt was minus both cuffs and where the cuffs had been torn off the edges of the sleeves were very jagged. The left cuff found the day before was found to have been a part of the same shirt. This shirt was covered with blood and the blood had been covered with graphite as though an attempt had been made to hide the blood spots. (A can of graphite was found in Ristman's automobile.) Most of the blood spots were on the sleeves near the jagged edges and one the left front of the shirt.

Last Saturday afternoon, four days after the murder was discovered, Sheriff Reeves, Deputy Sheriff Beckman and Detectives Goltz and Howell went to the house where Thompson had been living with Mrs. James Thompson.

From the clothesline they took a shirt, and from the house several pieces of clothing which had been worn. According to the officers Mrs. James Thompson told them that the undershirt belonged to Bennett Thompson. The shirt was cream colored.

"It's Ben's shirt; I washed it a couple of days ago," she said, according to the officers.

# Are Bloody Spots on Shirt?

On this undershirt several peculiar looking spots were found. The shirt was taken to Bertillon Expert Hunter for examination.

The acids used were old but they were placed on the peculiar looking spots. Sheriff Reeves waited a short time and when no positive reaction was noticeable left, taking the shirt with him to Sheriff Hurlbert's office. The shirt was there unwrapped and according to Sheriff Reeves and others present then, the acid had brought out blood spots. The spots were jagged after the acid had been placed on the spots. The 10 minutes was spent in going from the police station to the sheriff's office.

This shirt was taken to Hillsboro where the bloody outside shirt had previously been taken. Sheriff Reeves was on the scene of the murder last Sunday, the day following the taking of the shirt, and no opportunity was found to make a minute examination of both the undershirt and outside shirt.

**Do Spots Outside?**

On Tuesday it was announced that a comparison had been made of the two shirts and Sheriff Reeves said as far as he and others who had examined the two shirts with him, could determine the blood spots on the outside shirt and the peculiar looking spots were in corresponding positions.

The same day P. X. Johnson, who had seen a stranger talking to the murdered jitney driver the night of the murder, left Thompson out of a half dozen prisoners in the Hillsboro jail. He said he was "morally certain Thompson was the man he had seen talking to Ristman."

Johnson said that he had seen Ristman and the stranger together near the corner of Second and Alder streets at about 7 o'clock. Paul Turner, who had seen a stranger earlier

of the spot on the undershirt is irregular where the acid had gone onto the garment, as near as could be determined, this spot is directly beneath the blood spot on the outside shirt cuff.

When Thompson was arrested he wore a blue serge suit of clothes. This suit had been taken off of Thompson after he had been placed in the Hillsboro jail. The cloth was of good texture. The maker's name and the owner's name usually found on a strip of cloth inside of the pocket of a suit of clothes, were missing.

**Spots on His Coat.**

The lining of the sleeves is white, with small, dark-colored stripes running lengthwise. On the lining of the right sleeve, about an inch or more from the end of the sleeve, were about half a dozen small spots. These spots were red in color and resembled dried blood. Farther back some dark spots were noticed, and when the sleeve was held so that the light rays would strike it there appeared to be tiny particles in the black substance which reflected the light.

Graphite, such as found on the bloody outside shirt contains thousands of tiny carbon particles which reflect the light.

Up until noon of that day Thompson had little to say to anyone but Roscoe Hurst, his attorney, had told him not to talk to anyone. At noon, however, he appeared restless and nervous, and asked Sheriff Reeves to have District Attorney Tongue of Washington county visit him.

**Thompson Says Nothing.**

When Tongue arrived Thompson was not certain in his identification. Wednesday a member of The Journal staff went to Hillsboro. Sheriff Reeves showed him the undershirt and outside shirt. The most prominent spot on the undershirt was on the left sleeve. The bloody and graphite covered cuff was placed around the left sleeve and a comparison made. Although the shape

(The officers say that no one except one familiar with the country would leave the body where he did. The officers had considerable difficulty in locating the spot.)

As for the murder of Mrs. Jennings, she was in bed when killed. She had been struck on the head with a splitting maul. This maul was found in her room near the bed and had

blood on the blunt edge and blood spots on the handle.

(This maul was taken from the basement of her home. Joseph Galbreath, who lives at Cipole and who was at the Jennings home Monday afternoon, says that he saw the maul in the basement of the house on that day.)

**Auto Covered With Blood.**

Ristman's automobile was found directly behind the house, right in the center of a square formed by four fruit trees. The machine was facing the house and the house is on the south side of the road to Newberg. There were blood spots on the windshield, blood on the left side of the cushion on the back seat and blood in the bottom of the car between the two seats. Blood was also on the left running board. The murderer had tried to cover up the blood by covering the spots with earth. Bloody finger prints were found on the right hand side of the hood. These finger prints had been covered with dust, however, and Bertillon Expert Hunter could make nothing of them.

**Now Deputy Sheriff Phillips says**

Directly behind the house, right in the center of a square formed by four fruit trees. The machine was facing the house and the house is on the south side of the road to Newberg. There were blood spots on the windshield, blood on the left side of the cushion on the back seat and blood in the bottom of the car between the two seats. Blood was also on the left running board. The murderer had tried to cover up the blood by covering the spots with earth. Bloody finger prints were found on the right hand side of the hood. These finger prints had been covered with dust, however, and Bertillon Expert Hunter could make nothing of them.

**Now Deputy Sheriff Phillips says**

Directly behind the house, right in the center of a square formed by four fruit trees. The machine was facing the house and the house is on the south side of the road to Newberg. There were blood spots on the windshield, blood on the left side of the cushion on the back seat and blood in the bottom of the car between the two seats. Blood was also on the left running board. The murderer had tried to cover up the blood by covering the spots with earth. Bloody finger prints were found on the right hand side of the hood. These finger prints had been covered with dust, however, and Bertillon Expert Hunter could make nothing of them.

**Now Deputy Sheriff Phillips says**

Directly behind the house, right in the center of a square formed by four fruit trees. The machine was facing the house and the house is on the south side of the road to Newberg. There were blood spots on the windshield, blood on the left side of the cushion on the back seat and blood in the bottom of the car between the two seats. Blood was also on the left running board. The murderer had tried to cover up the blood by covering the spots with earth. Bloody finger prints were found on the right hand side of the hood. These finger prints had been covered with dust, however, and Bertillon Expert Hunter could make nothing of them.

**Now Deputy Sheriff Phillips says**

Directly behind the house, right in the center of a square formed by four fruit trees. The machine was facing the house and the house is on the south side of the road to Newberg. There were blood spots on the windshield, blood on the left side of the cushion on the back seat and blood in the bottom of the car between the two seats. Blood was also on the left running board. The murderer had tried to cover up the blood by covering the spots with earth. Bloody finger prints were found on the right hand side of the hood. These finger prints had been covered with dust, however, and Bertillon Expert Hunter could make nothing of them.

**Now Deputy Sheriff Phillips says**

Directly behind the house, right in the center of a square formed by four fruit trees. The machine was facing the house and the house is on the south side of the road to Newberg. There were blood spots on the windshield, blood on the left side of the cushion on the back seat and blood in the bottom of the car between the two seats. Blood was also on the left running board. The murderer had tried to cover up the blood by covering the spots with earth. Bloody finger prints were found on the right hand side of the hood. These finger prints had been covered with dust, however, and Bertillon Expert Hunter could make nothing of them.

**Now Deputy Sheriff Phillips says**

Directly behind the house, right in the center of a square formed by four fruit trees. The machine was facing the house and the house is on the south side of the road to Newberg. There were blood spots on the windshield, blood on the left side of the cushion on the back seat and blood in the bottom of the car between the two seats. Blood was also on the left running board. The murderer had tried to cover up the blood by covering the spots with earth. Bloody finger prints were found on the right hand side of the hood. These finger prints had been covered with dust, however, and Bertillon Expert Hunter could make nothing of them.

**Now Deputy Sheriff Phillips says**

Directly behind the house, right in the center of a square formed by four fruit trees. The machine was facing the house and the house is on the south side of the road to Newberg. There were blood spots on the windshield, blood on the left side of the cushion on the back seat and blood in the bottom of the car between the two seats. Blood was also on the left running board. The murderer had tried to cover up the blood by covering the spots with earth. Bloody finger prints were found on the right hand side of the hood. These finger prints had been covered with dust, however, and Bertillon Expert Hunter could make nothing of them.

**Now Deputy Sheriff Phillips says**

Directly behind the house, right in the center of a square formed by four fruit trees. The machine was facing the house and the house is on the south side of the road to Newberg. There were blood spots on the windshield, blood on the left side of the cushion on the back seat and blood in the bottom of the car between the two seats. Blood was also on the left running board. The murderer had tried to cover up the blood by covering the spots with earth. Bloody finger prints were found on the right hand side of the hood. These finger prints had been covered with dust, however, and Bertillon Expert Hunter could make nothing of them.

**Now Deputy Sheriff Phillips says**

Directly behind the house, right in the center of a square formed by four fruit trees. The machine was facing the house and the house is on the south side of the road to Newberg. There were blood spots on the windshield, blood on the left side of the cushion on the back seat and blood in the bottom of the car between the two seats. Blood was also on the left running board. The murderer had tried to cover up the blood by covering the spots with earth. Bloody finger prints were found on the right hand side of the hood. These finger prints had been covered with dust, however, and Bertillon Expert Hunter could make nothing of them.

**Now Deputy Sheriff Phillips says**

Directly behind the house, right in the center of a square formed by four fruit trees. The machine was facing the house and the house is on the south side of the road to Newberg. There were blood spots on the windshield, blood on the left side of the cushion on the back seat and blood in the bottom of the car between the two seats. Blood was also on the left running board. The murderer had tried to cover up the blood by covering the spots with earth. Bloody finger prints were found on the right hand side of the hood. These finger prints had been covered with dust, however, and Bertillon Expert Hunter could make nothing of them.

**Now Deputy Sheriff Phillips says**

Directly behind the house, right in the center of a square formed by four fruit trees. The machine was facing the house and the house is on the south side of the road to Newberg. There were blood spots on the windshield, blood on the left side of the cushion on the back seat and blood in the bottom of the car between the two seats. Blood was also on the left running board. The murderer had tried to cover up the blood by covering the spots with earth. Bloody finger prints were found on the right hand side of the hood. These finger prints had been covered with dust, however, and Bertillon Expert Hunter could make nothing of them.

blood on the blunt edge and blood spots on the handle.

(This maul was taken from the basement of her home. Joseph Galbreath, who lives at Cipole and who was at the Jennings home Monday afternoon, says that he saw the maul in the basement of the house on that day.)

**Auto Covered With Blood.**

Ristman's automobile was found directly behind the house, right in the center of a square formed by four fruit trees. The machine was facing the house and the house is on the south side of the road to Newberg. There were blood spots on the windshield, blood on the left side of the cushion on the back seat and blood in the bottom of the car between the two seats. Blood was also on the left running board. The murderer had tried to cover up the blood by covering the spots with earth. Bloody finger prints were found on the right hand side of the hood. These finger prints had been covered with dust, however, and Bertillon Expert Hunter could make nothing of them.

**Now Deputy Sheriff Phillips says**

Directly behind the house, right in the center of a square formed by four fruit trees. The machine was facing the house and the house is on the south side of the road to Newberg. There were blood spots on the windshield, blood on the left side of the cushion on the back seat and blood in the bottom of the car between the two seats. Blood was also on the left running board. The murderer had tried to cover up the blood by covering the spots with earth. Bloody finger prints were found on the right hand side of the hood. These finger prints had been covered with dust, however, and Bertillon Expert Hunter could make nothing of them.

**Now Deputy Sheriff Phillips says**

Directly behind the house, right in the center of a square formed by four fruit trees. The machine was facing the house and the house is on the south side of the road to Newberg. There were blood spots on the windshield, blood on the left side of the cushion on the back seat and blood in the bottom of the car between the two seats. Blood was also on the left running board. The murderer had tried to cover up the blood by covering the spots with earth. Bloody finger prints were found on the right hand side of the hood. These finger prints had been covered with dust, however, and Bertillon Expert Hunter could make nothing of them.

**Now Deputy Sheriff Phillips says**

Directly behind the house, right in the center of a square formed by four fruit trees. The machine was facing the house and the house is on the south side of the road to Newberg. There were blood spots on the windshield, blood on the left side of the cushion on the back seat and blood in the bottom of the car between the two seats. Blood was also on the left running board. The murderer had tried to cover up the blood by covering the spots with earth. Bloody finger prints were found on the right hand side of the hood. These finger prints had been covered with dust, however, and Bertillon Expert Hunter could make nothing of them.

**Now Deputy Sheriff Phillips says**

Directly behind the house, right in the center of a square formed by four fruit trees. The machine was facing the house and the house is on the south side of the road to Newberg. There were blood spots on the windshield, blood on the left side of the cushion on the back seat and blood in the bottom of the car between the two seats. Blood was also on the left running board. The murderer had tried to cover up the blood by covering the spots with earth. Bloody finger prints were found on the right hand side of the hood. These finger prints had been covered with dust, however, and Bertillon Expert Hunter could make nothing of them.

**Now Deputy Sheriff Phillips says**

Directly behind the house, right in the center of a square formed by four fruit trees. The machine was facing the house and the house is on the south side of the road to Newberg. There were blood spots on the windshield, blood on the left side of the cushion on the back seat and blood in the bottom of the car between the two seats. Blood was also on the left running board. The murderer had tried to cover up the blood by covering the spots with earth. Bloody finger prints were found on the right hand side of the hood. These finger prints had been covered with dust, however, and Bertillon Expert Hunter could make nothing of them.

**Now Deputy Sheriff Phillips says**

Directly behind the house, right in the center of a square formed by four fruit trees. The machine was facing the house and the house is on the south side of the road to Newberg. There were blood spots on the windshield, blood on the left side of the cushion on the back seat and blood in the bottom of the car between the two seats. Blood was also on the left running board. The murderer had tried to cover up the blood by covering the spots with earth. Bloody finger prints were found on the right hand side of the hood. These finger prints had been covered with dust, however, and Bertillon Expert Hunter could make nothing of them.

**Now Deputy Sheriff Phillips says**

Directly behind the house, right in the center of a square formed by four fruit trees. The machine was facing the house and the house is on the south side of the road to Newberg. There were blood spots on the windshield, blood on the left side of the cushion on the back seat and blood in the bottom of the car between the two seats. Blood was also on the left running board. The murderer had tried to cover up the blood by covering the spots with earth. Bloody finger prints were found on the right hand side of the hood. These finger prints had been covered with dust, however, and Bertillon Expert Hunter could make nothing of them.

**Now Deputy Sheriff Phillips says**

Directly behind the house, right in the center of a square formed by four fruit trees. The machine was facing the house and the house is on the south side of the road to Newberg. There were blood spots on the windshield, blood on the left side of the cushion on the back seat and blood in the bottom of the car between the two seats. Blood was also on the left running board. The murderer had tried to cover up the blood by covering the spots with earth. Bloody finger prints were found on the right hand side of the hood. These finger prints had been covered with dust, however, and Bertillon Expert Hunter could make nothing of them.

**Now Deputy Sheriff Phillips says**

Directly behind the house, right in the center of a square formed by four fruit trees. The machine was facing the house and the house is on the south side of the road to Newberg. There were blood spots on the windshield, blood on the left side of the cushion on the back seat and blood in the bottom of the car between the two seats. Blood was also on the left running board. The murderer had tried to cover up the blood by covering the spots with earth. Bloody finger prints were found on the right hand side of the hood. These finger prints had been covered with dust, however, and Bertillon Expert Hunter could make nothing of them.

**Now Deputy Sheriff Phillips says**

Directly behind the house, right in the center of a square formed by four fruit trees. The machine was facing the house and the house is on the south side of the road to Newberg. There were blood spots on the windshield, blood on the left side of the cushion on the back seat and blood in the bottom of the car between the two seats. Blood was also on the left running board. The murderer had tried to cover up the blood by covering the spots with earth. Bloody finger prints were found on the right hand side of the hood. These finger prints had been covered with dust, however, and Bertillon Expert Hunter could make nothing of them.

**Now Deputy Sheriff Phillips says**

Directly behind the house, right in the center of a square formed by four fruit trees. The machine was facing the house and the house is on the south side of the road to Newberg. There were blood spots on the windshield, blood on the left side of the cushion on the back seat and blood in the bottom of the car between the two seats. Blood was also on the left running board. The murderer had tried to cover up the blood by covering the spots with earth. Bloody finger prints were found on the right hand side of the hood. These finger prints had been covered with dust, however, and Bertillon Expert Hunter could make nothing of them.

**Now Deputy Sheriff Phillips says**

Directly behind the house, right in the center of a square formed by four fruit trees. The machine was facing the house and the house is on the south side of the road to Newberg. There were blood spots on the windshield, blood on the left side of the cushion on the back seat and blood in the bottom of the car between the two seats. Blood was also on the left running board. The murderer had tried to cover up the blood by covering the spots with earth. Bloody finger prints were found on the right hand side of the hood. These finger prints had been covered with dust, however, and Bertillon Expert Hunter could make nothing of them.

**Now Deputy Sheriff Phillips says**

Directly behind the house, right in the center of a square formed by four fruit trees. The machine was facing the house and the house is on the south side of the road to Newberg. There were blood spots on the windshield, blood on the left side of the cushion on the back seat and blood in the bottom of the car between the two seats. Blood was also on the left running board. The murderer had tried to cover up the blood by covering the spots with earth. Bloody finger prints were found on the right hand side of the hood. These finger prints had been covered with dust, however, and Bertillon Expert Hunter could make nothing of them.

**Now Deputy Sheriff Phillips says**

Directly behind the house, right in the center of a square formed by four fruit trees. The machine was facing the house and the house is on the south side of the road to Newberg. There were blood spots on the windshield, blood on the left side of the cushion on the back seat and blood in the bottom of the car between the two seats. Blood was also on the left running board. The murderer had tried to cover up the blood by covering the spots with earth. Bloody finger prints were found on the right hand side of the hood. These finger prints had been covered with dust, however, and Bertillon Expert Hunter could make nothing of them.

**Now Deputy Sheriff Phillips says**

Directly behind the house, right in the center of a square formed by four fruit trees. The machine was facing the house and the house is on the south side of the road to Newberg. There were blood spots on the windshield, blood on the left side of the cushion on the back seat and blood in the bottom of the car between the two seats. Blood was also on the left running board. The murderer had tried to cover up the blood by covering the spots with earth. Bloody finger prints were found on the right hand side of the hood. These finger prints had been covered with dust, however, and Bertillon Expert Hunter could make nothing of them.

that Thompson had once remarked: "I know a large woman with some rocks and a bunch of kale." Deputy Sheriff Ward says that Thompson had also once remarked that he was going to get a jitney and make trips over the Columbia river highway (Mrs. Jennings was a large woman

and did have some diamonds. These diamonds were not taken by the murderer, however, as they were in a secret drawer in the sewing machine table. The house had the appearance of having been ransacked and, according to the investigators, a small purse belonging to Mrs. Jennings had been taken. A suit of clothes belonging to Al Howigun, Mrs. Jennings' fiancé, was also missing from the house.)

Thompson is an ex-convict and served about 10 years in the Oregon penitentiary at Salem.

# Pacific Market

In the New Central Market CORNER FOURTH AND YAMHILL

Neck and Back	5c	Nice Fresh	9c
Bones of Pork...	5lb	Spare Ribs.....	9lb
HAMBURGER (fresh made)		STEER POT ROAST BEEF	
STEER SHORT RIBS OF BEEF	10c/lb	Prime Cuts of VEAL ROAST	12 1/2c/lb
Nice, Juicy BOILING BEEF		Nice, Tender VEAL CHOPS	
Shoulder Pork Chops	14c/lb	Magnolia Butter	58c
Lamb Chops		Strictly Fresh Ranch Eggs	25c
Loin Pork Chops		Prime Ribs of Beef, rolled and boned	17c
Round Steak	18c/lb	Choice Legs of Pork Roast	
Sirloin Steak		Genuine Calf Liver	
		Calves' Sweetbreads, lb.	25c
		Fresh-killed Chickens, lb.	20c
		Tillamook Cheese, full cream, mild, medium or sharp, lb.	20c

WATCH OUR WEDNESDAY MEAT and BUTTER SPECIALS IN TUESDAY EVENING PAPERS

**DUMONT 2% IN. PEER 2% IN.**

WITH THE OVAL BUTTONHOLE

**Lion Collars**

UNITED SHIRT & COLLAR CO., TROY, N. Y.

**Lion Clothing Co.**

MORRISON AT FOURTH ST. PORTLAND, ORE.

**Working People ATTENTION!**

I am a graduate and licensed physician and surgeon. I give you first class medical and surgical attention at less than half the usual fees.

Office Calls... 50c  
House Calls... \$1.00  
Confinement Cases, for... \$10

**DR. W. CLAUDE WAMPSON**

718 DeWitt Building  
34 and W. Commercial  
Hours 10 a. m. to 8 p. m. Sundays 12 to 2 p. m.

OFFICE PHONE, MAIN 3078.  
RESIDENCE PH. BELLWOOD 2344

# Bellamy's Profit Sharing Sale!

We Buy Our Groceries Right, and Believe You Should Have a Chance to Do So. COMPARE THE FOLLOWING LIST WITH WHAT YOU ARE PAYING

<b>BUTTER</b> Apple Blossom Brand 57c Roll, 30c Lb.	<b>PURE HONEY</b> STRAINED Pints ..... 25c Full Quarts ..... 40c	<b>SHIELDS' NOODLES</b> 3 Packages 25c	<b>HUNT'S APRICOTS</b> WORTH 30c 15c Per Tin
<b>SUGAR PRICES</b> 100 lbs. Cane \$8.15 100 lbs. Beet \$7.95 12 lbs. Cane \$1.00 13 lbs. Beet \$1.00	<b>SHAKER SALT</b> 2 for 15c	<b>10c SACK SALT</b> 2 for 1	