

TRADE EXTENSION IS EARNEST GOAL FOR THE LOCAL BUREAU

Securing of More Steamship Lines for Portland One of Forms of Activity of Body.

NEEDS OF PORT GUARDED

Development of Columbia River Basin Another Aim; Buyers' Week Endeavors Claim Attention, Too.

Chamber of Commerce Review. The fourth in the series of summarized reports of Chamber of Commerce activities during the past years is given today.

The fifth will deal with the publicity and conventions bureau.

By Marshall N. Dana.

An Englishman was taken by some Chicagoans to see his first baseball game. It was a very noisy and to the Chicagoans, exciting event. They yelled themselves hoarse. They pounded each other on the back. After the game, one of them said to the Englishman, "What do you think of our national game?"

"Oh, you know, don't you think it was a great deal doing for so little done?"

The trade and commerce bureau of the Chamber of Commerce has appointed many committees and has recorded activities and effort incommensurate with an accomplishment capable of terse statement. Undoubtedly its work must be regarded as cumulative—a planting of seed during this first year of the new Chamber of Commerce and a possible harvesting in the future.

Bureau Has 464 Members.

The bureau numbers 464 members. To it are committed the Chamber of Commerce policies and concern for trade extension, new steamship lines, and proper representation of this port in other ports and markets. The committees and what may be said of their accomplishments indicate the multiplicity of duties:

Navigation committee—A service organization that keeps in touch with all navigation matters, holds monthly regular meetings and frequent special meetings and represents in its membership seven sides of the navigation problem.

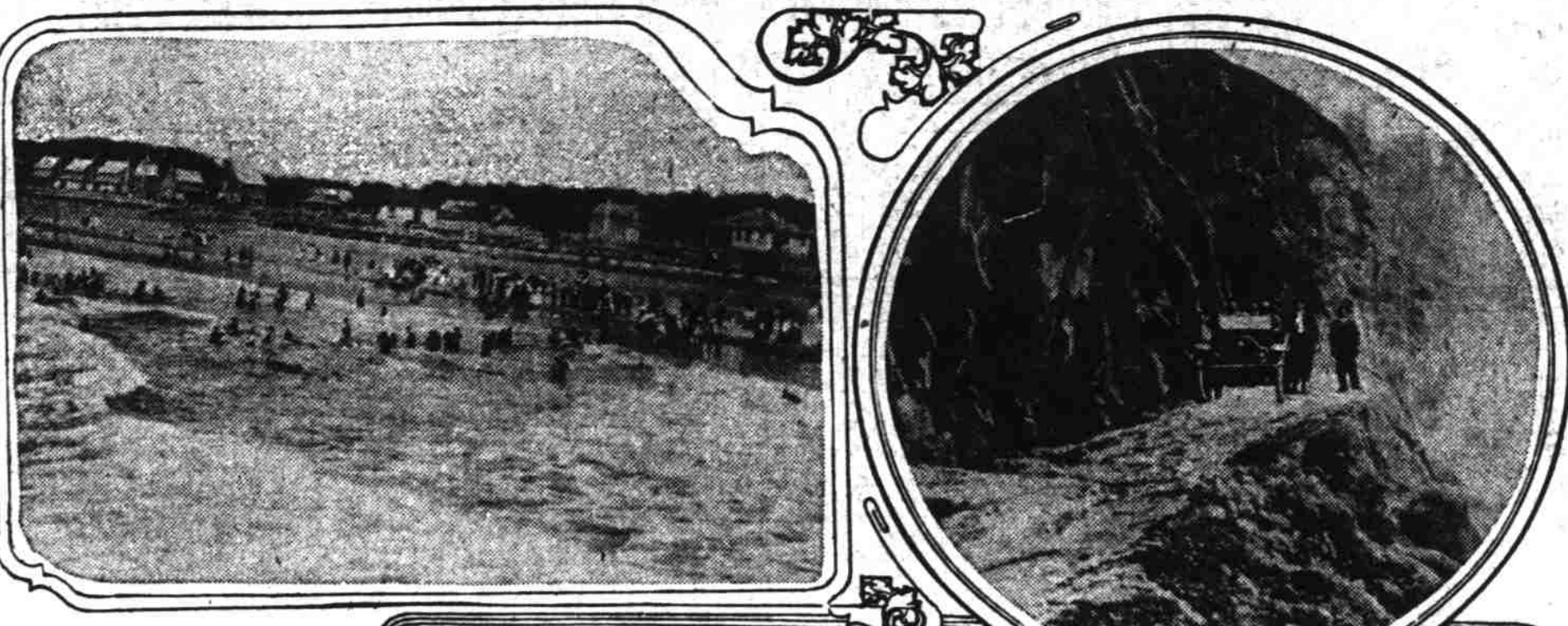
River and harbor committee—Also a service organization made responsible for seeing that Oregon ports and harbors are not neglected in congressional appropriations for improvements.

Alaska steamship committee—Portland has as yet no steamship line to Alaska.

Plan Is Adopted.

Army transport committee. Astoria cooperation committee—held

SEASIDE LOOKS FORWARD TO INFLUX OF VISITORS



Season Approaches the Time When Beach Beckons the City Dweller.

Seaside, Or., March 25.—With the approach of the spring and summer seasons comes the longing for the seashores with its wealth of health giving recreations. In anticipation of the many advantages it has to offer in this line, Seaside is preparing for the summer influx that finds the trip by rail or boat down the Columbia an inspiring beginning to an outing that is sure to include visits to the several natural beauty spots and places of historic interest adjacent to this resort.

Better still the automobile tourist will find the beach the more accessible this season because of the Columbia river highway, which, if not paved, provides an improved means of reaching the Pacific.

Seaside's permanent population of 2000 is swelled to 7000 during the beach season and as many as 60,000 visitors have been entertained during the summer months.

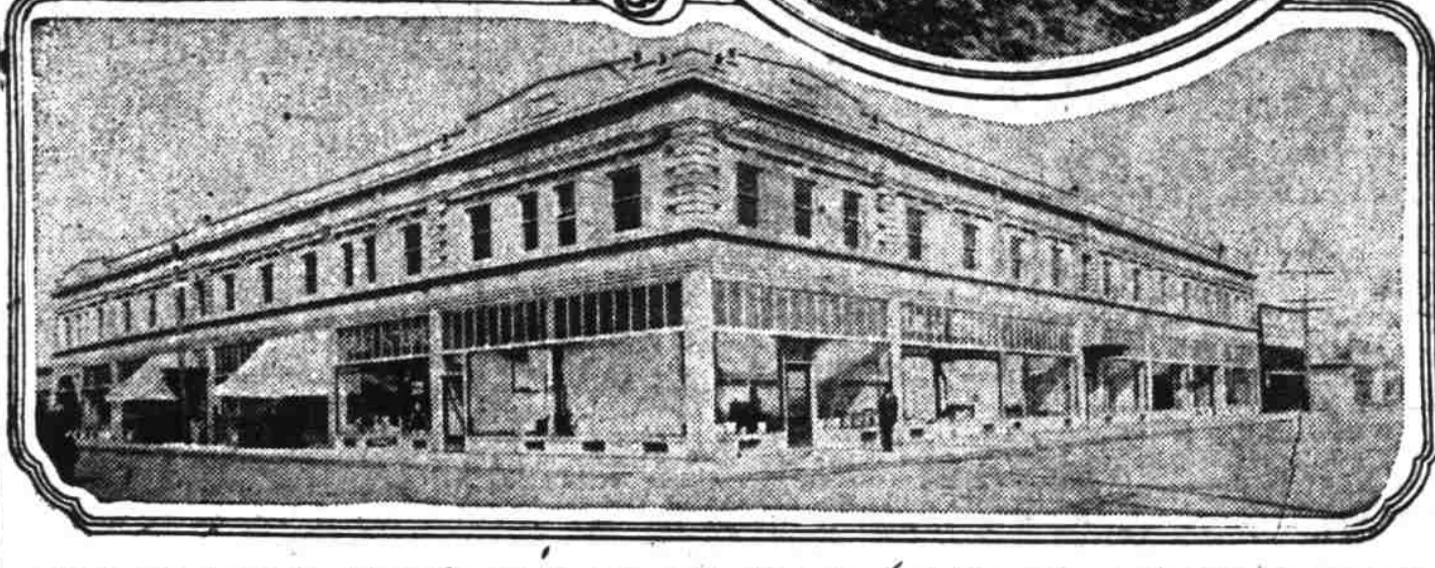
one meeting and decided on a plan of procedure.

Oregon coast steamship committee—working on the problem of securing more northbound tonnage from Oregon coast ports so that service between Portland and these Oregon coast ports may be strengthened.

Brigade headquarters committee. Buyers' week committee—has charge of entertainment of out-state buyers. Coal bunkers committee. Depot quartermasters headquarters committee. Columbia basin development committee.

May Establish Branch.

Foreign trade bureau committee—has a proposition from the federal foreign trade bureau to establish a branch here (Seattle is northwest headquar-



Above, left to right—Along the beach at Seaside; Hug Point at low tide, a Cannon Beach attraction (Photograph by Montag). Below—Gilbert block, Seaside (Photograph by Montag).

ters) provided Chamber of Commerce pay the salary of the man in charge; committee has recommended that amount sufficient for salary be included in next budget of the Chamber of Commerce.

Indian warehouse and purchase bureau—endeavoring to show federal authorities advantages of Portland as a place for the purchase and storing of supplies needed by Indian reservations of this district.

Marine transportation development committee—its data, plans and assurances of support in connection with new steamship lines turned over to the committee to be headed by T. B. Wilcox.

Waterfront charges committee—has reported that the cost of handling general cargo in this port is higher than in competitive ports.

Wharf facilities committee.

Hens and Chicks can be purchased at the right prices from poultry advertisers in today's classified section of The Journal.

FUNERAL OF LOCAL WOMAN CONDUCTED



Mrs. Gladys Sullivan.

Mrs. Gladys Sullivan, who died in this city last Tuesday, was the wife of Gerald E. Sullivan, and the daughter of Mr. and Mrs. George Avery of Kendall station.

Mrs. Sullivan was born on March 30, 1897, at Kendall station, and all her short life was spent in this city and vicinity. She attended Harmony and Arieta schools, passing to the Washington high and afterwards to the Lincoln high school, but married before she graduated.

Besides her parents and husband Mrs. Sullivan is survived by an infant son and a sister, Verna Avery, of Lethbridge, Alberta.

The funeral was held Saturday afternoon, March 25, from the conservatory chapel of F. S. Dunning, and interment was in Mt. Scott Park cemetery.

Mrs. Sullivan was a participant in the Rose Festival parade of 1914 and won a prize for the best decorated pony, which was ridden by her.

Equality of Fleets Favored by Peary

Rear-Admiral Would Give Equal Protection to Both Coasts; Favors Immediate Addition to Navy.

Washington, March 25.—(I. N. S.)—Rear Admiral Robert E. Peary, famous discoverer of the north pole, today went on record as favoring fleets of equal strength in Atlantic and Pacific oceans.

Peary advocated immediate construction of 16 battle cruisers, armed with 16-inch guns and capable of a speed of 35 knots, together with four torpedo boat destroyers for each cruiser and a full complement of submarines and aeroplanes.

Eight of these with their auxiliaries he would station at San Francisco or other Pacific coast ports and the remaining eight on the Atlantic.

Officer in Debt to Face Courtmartial

Major Chase, Commandant at Fort Milley, Cannot Pay Obligations in Reasonable Time, Is Charge Made.

San Francisco, March 25.—(P. N. S.)—Accused of incurring debts which it will be difficult for him to pay within a reasonable period, Major Arthur W. Chase, coast artillery corps, U. S. A., commander at Fort Milley, soon will face a general courtmartial. The indebtedness is declared in army circles to be due to unfortunate family troubles and no moral turpitude on his part is involved. He will remain in charge at Fort Milley pending the trial.

ZEPPELINS WITH NEW DESTRUCTIVE DEVICE TO ACCOMPANY FLEET

High Explosives on Long Wire to Be Used Against Enemy Vessels.

EXPERIMENTS WATCHED

Swiss Boatmen Report Trials Made in Lake Constance; New Zeppelin Travels 100 Miles an Hour.

By William G. Shepherd. Paris, March 25.—(U. P.)—Equipped with a new horribly destructive device, a great fleet of Zeppelins will accompany the German navy when it dashes out to meet the British, according to stories told by Swiss boatmen on Lake Constance.

They obtained their information, they said, from residents of Friedrichshafen, where the great Zeppelin works are located. They have watched German sky cruisers experiment with the new death missile.

Suspended from the gondola of the Zeppelin is a wire more than two miles long. At the end of the wire dangles a cluster of bombs, filled with high explosives.

Scouting ahead of the fleet at a great height, the Zeppelin, boatmen say, will drop its explosive bait to the water and drag it at a high rate of speed. When the bomb cluster strikes the side of an enemy warship, the Zeppelin commander, two miles above the water, will touch an electric button, setting off the charge.

The bomb dragging feat, it is said, has been practiced several times in the past fortnight by a new Zeppelin that apparently maintained a speed of 100 miles an hour.

NAMED MANAGER OF LOCAL BRANCH



—Photo by C. Elmore Grove. George M. McDowell.

COPENHAGEN FIRM SELECTS PORTLAND AS HEADQUARTERS

(Continued From Page One.)

terials foreign to this port and needed in every branch of agriculture and manufacture.

The purchase here annually of thousands of dollars of supplies for the operation of the fleet of steamers and sailing craft.

The possible building of several craft here or at North Pacific ports.

The trade of the Portland office will not be limited to any one portion of the globe. The Orient, Australia, Europe, Scandinavia, South America, the east coast of the United States, in fact, any part of the world where cargoes can be bought or sold to advantage will be open for trade.

Anderson & Co. are the largest Danish commercial operators in the world. They maintain a fleet of steamers in the Baltic and Atlantic trade, and through New York office established recently made their entrance into the American trade.

They have under construction 10

steamers at either Scandinavian or American yards, and have assured McDowell that they will supply him with such vessels as he may be able to supply with profitable trades.

George M. McDowell, the Portland man who is to head this great concern, is one of the best known of Pacific coast steamship men. He is comparatively a newcomer into the maritime field, but has been in touch with the development of the northwest for many years.

He served under John F. Stevens as right of way agent for the Oregon Electric and Spokane, Portland & Seattle railroads, and as such did much of the "missionary" work which preceded the development of the great Hill system of electric and steam lines in Oregon and Washington. After that work was completed he became general manager of the Ruth Trust Co., an organization which marketed in the few years following the opening of the Hill system many thousand acres of fine farms about Oregon.

Appointed as Manager. His appointment as manager for W. R. Grace & Co. was made two years ago, and before the war put a stop to all but the highly necessary lines of trade, had built up a fine business for that concern out of Portland.

W. R. Grace & Co. will, in all probability, close their Portland office temporarily. Announcement has been made from New York that all intra-coast business will be neglected for the time being, in the effort to take advantage of the high freights which are in effect in all other lines.

The steamers of the lines are at present all operating out of San Francisco and New York with the exception of one or two that have been sent to the Orient. The Puget Sound office of the company is also practically out of business, an occasional ship with copper ore from the west coast being the extent of the business transacted from that port.

Another Storm Is Now Forecasted

Attempt to Make Prediction in Advance Is Made by the Local Weather Office.

This section of the United States is in for another storm during the early part of this week, according to the United States weather bureau forecast for the week commencing today.

The weather bureau is undertaking the forecasting of the weather a week in advance.

The forecast is: "West of the Mississippi river low temperatures at the beginning of the week will be followed by a general change to warm Monday and Tuesday and moderate temperatures thereafter during the remainder of the week."

Another storm will advance inland from the Pacific Monday or Tuesday, pass eastward to the middle plains states and the upper Mississippi valley; the middle of the week, and to the eastern states about Thursday.

This disturbance will be preceded by a general change to warmer weather over eastern and southwestern districts and be attended by general rains in the North Pacific states and the northern and middle states east of the Rocky mountains. It will be followed by cooler weather over the northern half of the country."

Military Activity Is Wakened in Bay City

San Francisco, March 25.—(P. N. S.)—The hunt for Francisco Villa, for all its proximity to San Francisco, headquarters for the western army division, has caused hardly a ripple of military activity here until today when three field clerks were ordered to Columbus, N. M., and orders were received at the Letterman general hospital to have a number of hospital sergeants ready for immediate service at the Mexican border.

Also out in the stream derricks about the supply ship Supply spent most of the day taking aboard 130 tons of ammunition and supplies for the cruiser Pittsburg, which arrived here yesterday with three companies comprising the First battalion of the Twenty-first infantry, from Vancouver barracks, en route to San Diego.

Present at the meeting which has been in session here for a week, are H. V. Platt, of Los Angeles, assistant general manager of the southern division of the Southern Pacific; D. W. Campbell, of Portland, assistant general manager of the northern division of the Southern Pacific, and a number of minor officials.

"The meeting is being held for the discussion of the settlement of minor differences with employes," said Mr. Platt today. "It has nothing whatever to do with the movement for an eight-hour day, or the question of wages. The conference is held yearly and is part of a plan to settle amicably any differences which may arise between the company and its employes."

Alaskan Faces Four Charges of Forgery

Indictments Are Outgrowth of Suspicion Accused May Have Knowledge of Disappearance of Three Alaskans.

Juneau, Alaska, March 25.—(P. N. S.)—Edward Krause, already under indictment here for impersonating a federal officer, today faces four additional indictments, each charging him with the crime of forgery. District Attorney Smiser stated in court that still more indictments against Krause are coming up.

Krause is suspected of knowledge of the manner in which at least three Alaskans who are missing disappeared. The indictments now standing against him are outgrowths of his alleged connection with the disappearance of William Christy, Captain J. O. Plunkett and K. Yamamoto.

New Advance Base in Mexico Planned

Use of Mexican National Railroad Becoming Important; Extension of Chase Is Indicated by Latest Move.

San Antonio, Texas, March 25.—(U. P.)—American expeditionary troops in Mexico are planning a new advance base along the Mexican National railroad from El Paso to Chihuahua City, it was learned at army headquarters today. The use of this railroad in addition to the use of the Mexican Northwestern is becoming important.

This is taken to indicate that military men believe the chase after Francisco Villa will be extended. Major General Fred Funston is most anxious to obtain permission for army supplies to be shipped over Mexican railways.

The American vanguard is now more than 250 miles from the border, and the difficulties of keeping the army supplied by sending motor trucks overland has been greatly increased. Use of the railways is considered imperative.

Buy your clothes where good dressers buy theirs—here

Advertisement for Ben Selling Morrison at Fourth, featuring a large question mark and the text 'Ben Selling Morrison at Fourth'.

Advertisement for Strand Theater, Park at Stark, featuring the text 'ANY SEAT ANY TIME 10¢' and 'COMPLETE CHANGE OF PROGRAM EVERY SUNDAY AND THURSDAY'.

Advertisement for Complete New Show Today at Strand Theater, listing 'FIVE FOLLISH FELLOWS', 'DONITA', 'SEYMOUR AND DUPREE', 'WAYNE AND MARSHALL', and 'TANGLED HEARTS'.

Advertisement for Portland's New PHOTOVILLE Theatre, listing 'Me for the STRAND Twice-a-Week' and 'Continuous—Daily 1 to 11 P. M.'.