

## SPRING STYLE EXHIBIT

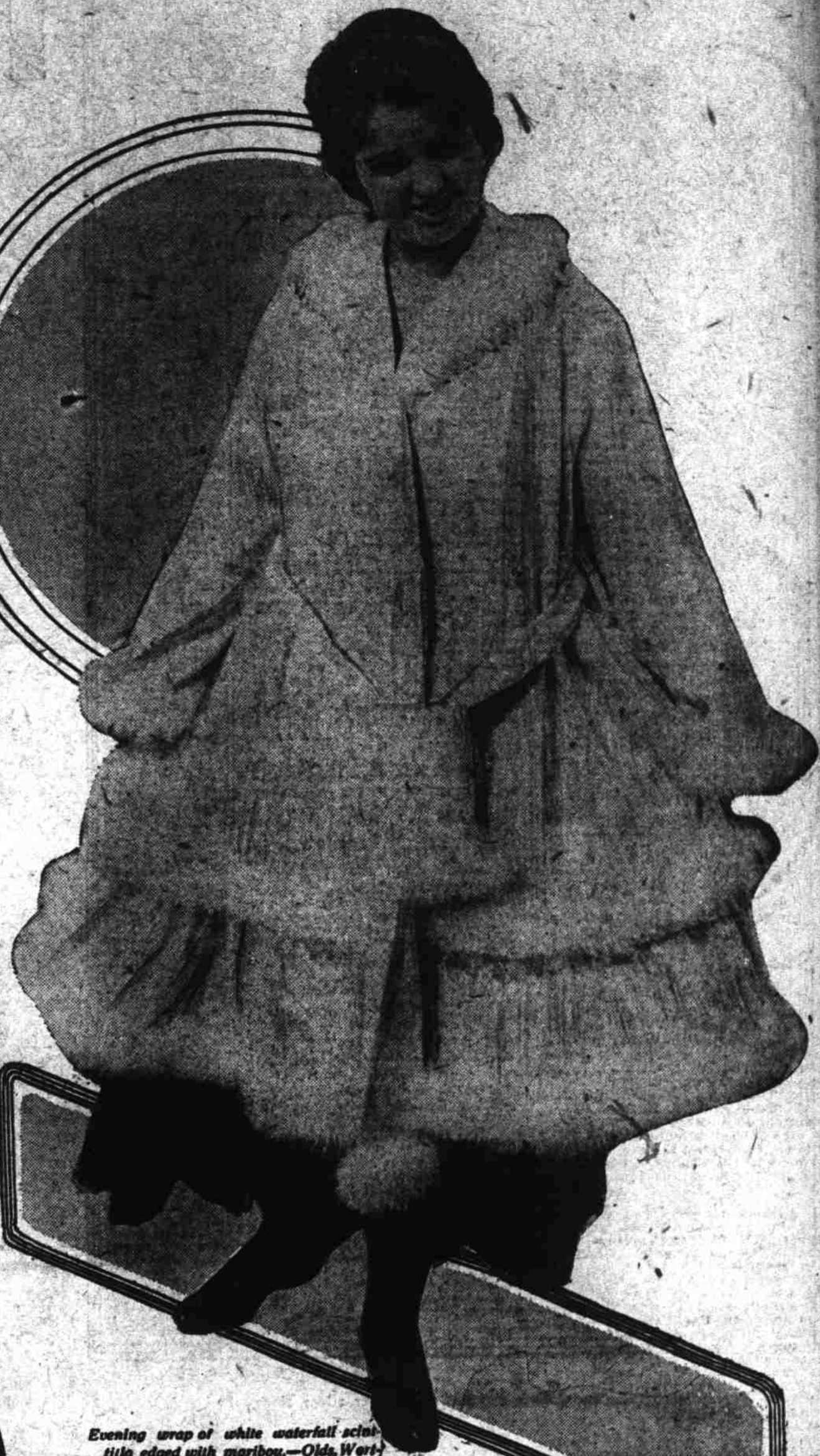


Old gold silk jersey wrap, flowing hood scarf and sleeves. Trimmed with brown maribou.—Meier & Frank.



Graceful basket-shape in black novelty braid, trimmed with delicate foliage and flowers, edged with soft frill of tulle and held in place with opalescent ribbon.—Wonder millinery.

BUSHNELL PHOTO



Evening wrap of white waterfall satin, tulle edged with maribou.—Olds, Westman & King.



Tan gabardine three-quarter length coat with flaring cape collar. Pattern hat trimmed with bows of black satin, new pointed veil. Emporium.

PHOTOS BY BUSHNELL



White net evening gown over silver cloth with touches of black velvet.—The W. S. Settle Shop.



Brown check suit with collar and cuffs of white broadcloth.—Eastern Outfitting Company.



Tailored waist of white tulle with shaded blue stripes.—Lipman, Wolfe & Co.



Pastel blue and orange check suit. C. E. Holiday Co.

BUSHNELL PHOTO