

FLORAL BEAUTIES OF PORTLAND WINNING PRAISE OF TOURISTS

City Likened to Great Basket Decorated Profusely With Choicest Blooms.

ART AND NATURE AT BEST

Portland's Climate and Public Spirit of Its Citizens Win Name of "Rose City."

Known far and wide as a city of homes, Portland, nestled away in a huge basin surrounded by hills that are watered by the picturesque Willamette...

From the tops of these rugged hills on the west where spread the rose-bordered lawns and beautiful homes, all along the wide driveways...

Portland at Her Best

Endowed by nature with a climate peculiarly adapted to flower culture, Portland is to be seen at her best...

Portland is known as the "Rose City," having acquired the title in 1906 when the first Rose festival was held.

Portland is known as the "Rose City," having acquired the title in 1906 when the first Rose festival was held.

This year an especial effort was made to develop the City Beautiful on a larger scale, for progressive citizens felt that the city would have many visitors...

Leading Men Named

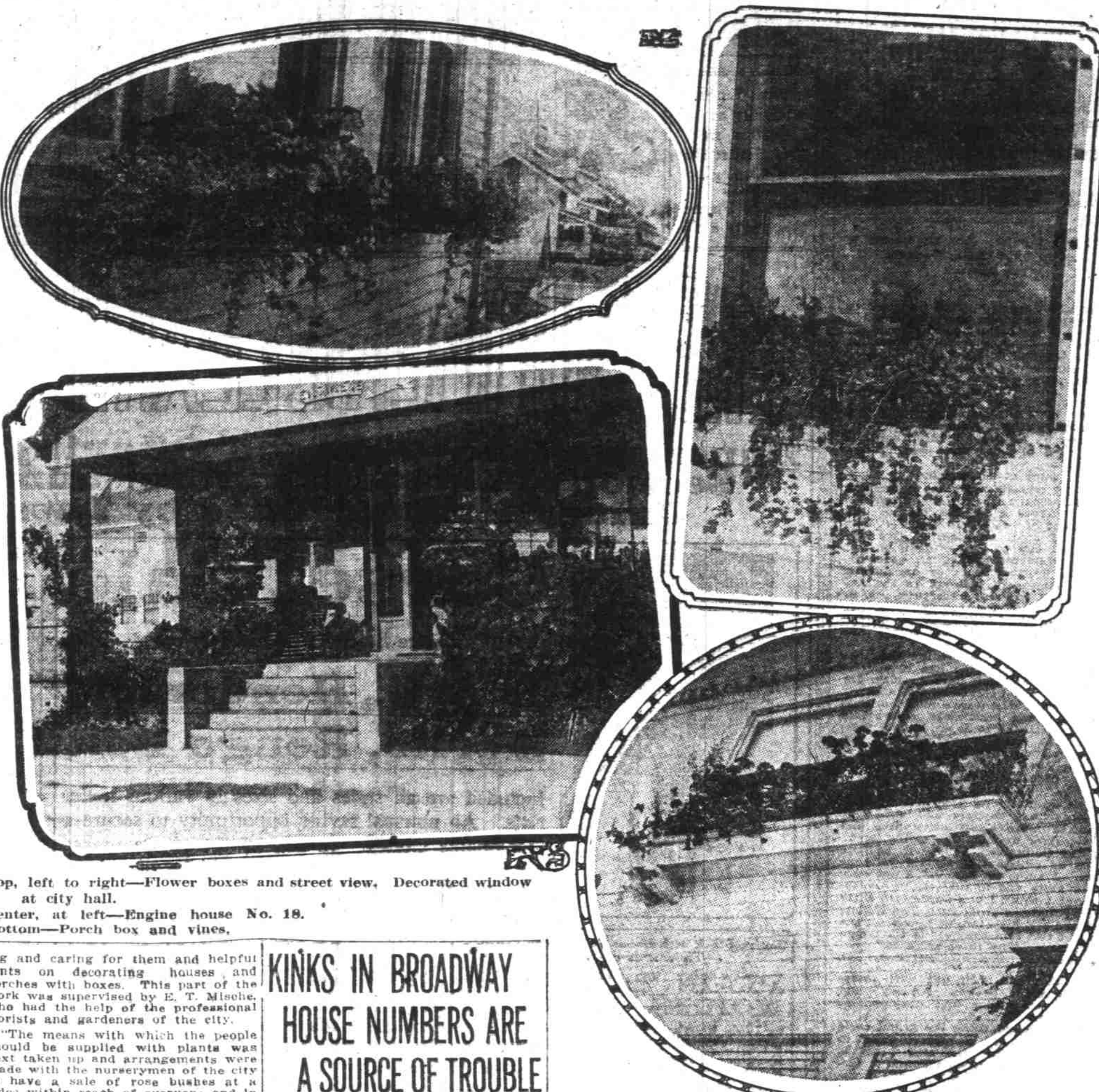
Early in the spring the first efforts were put forth to have the city assume the appearance of a flower garden, so that in the summer when the roses are at their poorest there would be other attractive flowers...

The first work attempted was a general clean up of the city and in this all the various improvement associations and the public school children, working under principals and teachers, took part.

Having once cleaned the city the work of beautifying commenced. Mr. Doyle divided the city into over 100 districts and Mr. Currey arranged contests in each of these districts.

This was followed with a campaign of education on the kind of flowers to grow, the method of planting...

BEAUTIFUL WINDOW BOXES MAKE CITY LIKE FAIRYLAND



Top, left to right—Flower boxes and street view. Decorated window at city hall. Center, at left—Engine house No. 18. Bottom—Porch box and vines.

ing and caring for them and helpful hints on decorating houses and porches with boxes. This part of the work was supervised by E. T. Mische, who had the help of the professional florists and gardeners of the city.

The means with which the people should be supplied with plants was next taken up and arrangements were made with the nurseries of the city to have a sale of rose bushes at a price within reach of everyone and in this way nearly 30,000 rose bushes were sold.

Setting an example for the citizens to follow the city officials started to decorate and improve city property. The city hall was made to fairly glow with window boxes and potted plants.

The fire engine houses and surrounding grounds were improved and the school yards were also planted with flowers and shrubs. The result has been that the city everywhere is full of bright flowers, and these have proved the greatest advertising asset...

Germany Gets Roumanian Grain

London, Aug. 7.—A Bucharest dispatch to the Times says that the harvest has been completed almost everywhere in Roumania and is very abundant. As the Danubian is closed, he adds, it is expected that about 3,000,000 tons of grain will go to Germany.

KINKS IN BROADWAY HOUSE NUMBERS ARE A SOURCE OF TROUBLE

Task of Telling Where It Is Broadway and Not Broadway Hard for Postmaster.

Broadway is Broadway all the way from its furthest point on the east side to its "conclusion" on west side, except where it is Broadway north or Broadway south, or just plain Broadway, and at one point "Seventh street."

Both admit they are hard up against it when it comes to telling just where the thoroughfare is Broadway and where it is not.

On both east and west sides of the river the street signs bear this simple legend "Broadway." But they don't tell the truth, according to Myers, Dieck and I. N. Fleischner, who started something recently when his mail continued to come to his home on Broad-

way—west side—about two days late. "Where am I living anyway?" queried Fleischner of Myers.

Then ensued voluminous correspondence which took a couple of weeks and which Fleischner now has with him for study at the beach.

And in each of these subdivisions of the thoroughfare there are street numbers which clash, and that account for mixups and delays in delivery of mail.

"I stand for giving Broadway the plain designation of East Broadway on the east side," said Myers. "That would straighten out everything."

Indignant citizens lined up three deep to protest. They showed that Broadway—east side—was named in 1892, and when old Seventh street on the west side was changed to Broadway in March of 1913 they made it so uncomfortably warm that the council in November by ordinance created the several designations that are now the cause of so much trouble.

But Dieck is determined to find some way of simplifying the situation—but just what he will find he doesn't know.

could file suit in the federal court, the ruling stated.

LOOKOUT MOUNTAIN IS RECOMMENDED AS SCENIC ROAD ASSET

Elevation on Mount Hood Line Said to Afford View of Hills and Valleys.

MAJESTIC PEAKS LOOM

No Mistake Should Be Made in Location of Highway, Declares M. G. George.

Portland, Aug. 7.—To the Editor of The Journal—In a recent issue your editorial mentions efforts by the national forest service and others to build a road around the eastern slope of Mount Hood to connect the Columbia highway with the old Barlow road via Hood River valley, and you also refer to the Wasco county proposition by way of Ward's mill and feasible. Both projects should be united in one main line common to Hood River, The Dalles, Dufur and Portland.

Any proposed road ought first, after rounding head water of White river, to follow the ridge to Lookout mountain and then down. Already there is a forest trail along there which touches Lookout mountain, and a wagon route survey somewhere in there is contemplated by government engineers with the view of asking congress for an appropriation for a grand Hood Forest highway.

Elevation Nearly 6000 Feet.

Now is the time for Portland, Hood River, The Dalles and Wasco county to take a decided interest in this matter. Lookout mountain in Hood River county and forest reserve lands topography map completed, and public attention has not been drawn to this wonderfully grand scenic mountain.

No one ever looked at Hood or Adams or St. Helens or Rainier or any other snow-capped mountain from the viewpoint of their respective timber lines up, without more or less feeling of disappointment. No mountain from an upward sloping view ever impresses the traveler with a mountain's true sublimity and grandeur.

Reflection will convince that no road along or through timber line base of Mount Hood can at all compare with the Lookout mountain view.

It is of especial importance now that no mistake in location be made.

Could file suit in the federal court, the ruling stated.

be along the magnificent crest ridge leading from a little beyond Government Camp to Lookout mountain and around to either Hood River, The Dalles or Dufur, or to all. Travelers could then see Mount Hood in full beauty across only eight miles in an air line from Hood's summit, and over a picturesque and rugged gorge with its glaciers, waterfalls, East Hood river, forests and farms—along down from Hood's crowning top to its base at the head of Hood river valley, and on to Hood river city all in full view. Nothing like it in the world. The advantage of such a viewpoint over a base-timber-line-upward viewpoint is realized by everyone who has been on Mount Jefferson, where comparing the Jefferson view enjoyed from its ridge approach before descending into Hunt's Cove, with any Jefferson view had in climbing the mountain itself.

Highways Already Near It.

Besides, the view of Hood from Lookout mountain far surpasses any at the Jefferson ridge route—majestically grand as that route is.

The view of Mount Jefferson over Hunt's Cove gorge stands at present unrivaled except by that from Lookout mountain. That viewpoint of Jefferson probably never will be accessible except by pack trail, while Lookout mountain is now nearly reached by one highway from The Dalles, another from Dufur and besides is not over seven miles from the present end of a Hood river valley road.

At a suitable point down around into East Hood river gorge the genius of a Lancaster could duplicate the magnificent Crown point descent to Latourel, with entire view of Mount Hood immediately facing in this foreground, and on nearly an air line from where this proposed encircling Mount Hood road would leave the Barlow route clear to Hood river city. An air line to The Dalles would touch the Mount Hood side of Lookout mountain, and at that point be only a mile or so distant from any proposed Hood base-view road.

Building Suggestions Made.

Variation along by Lookout mountain, besides enhancing scenic attractiveness, would greatly shorten the present distance from The Dalles and from Dufur to the Barlow road, and a Lookout mountain main line would enlist all of Wasco county's cooperation with the government in one common beneficiary purpose for Hood River, The Dalles, Dufur and Portland.

Now Is the Time.

Now is the time for Hood River and Wasco counties to rightly locate grades and scenic views for better location and completion of the Columbia highway from Hood River to The Dalles over which is to roll not only the auto and local travel but also trucks with freight from the inland empire to Portland and the sea; and any excess above a 5 per cent grade around the river and Hood hills may prove to be the difference between permanent success or failure as a through highway. Tourist travel now turning Oregon-way, along with what you term

SEATTLE PREPARING TO ENTERTAIN LARGE MISSIONARY MEETING

National Convention of Methodist Woman's Society Comes to Northwest.

The Puget Sound conference of the Woman's Home Missionary society of the Methodist Episcopal church rapidly perfecting plans and raising necessary money to entertain the meeting of the parent body which will be held in Seattle September 29 to October 6.

This is the first time the national convention of the society has come to the northwest. The national organization has a membership of 150,000 women. About 400 delegates are expected, coming from every section of the United States.

The president, Mrs. Wilbur E. Thirkield, is the wife of Bishop Thirkield of New Orleans. The corresponding secretary, Mrs. May Leonard Woodruff, is a sister of Dr. Anna Wright Leonard of Seattle.

Both these women will be in attendance at the convention, as well as Miss Carrie Burge of Delaware, Ohio, secretary for young people's work, who will be on the program. Organized soon after the Civil war for the purpose of extending aid to freedmen, the Woman's Home Missionary society has enlarged its scope until now it has schools and homes for women and children among negroes, mountain whites, Indians, Mexicans, natives of Alaska and foreign populations, conducts settlement work in many of the large cities of the United States, and is active in the care of immigrants on both the Atlantic and Pacific coasts. The work of the society at Ellis Island has been the subject of interest and praise by the authorities.

WILL COLLECT OLD DEBTS

Newark, N. J., Aug. 7.—In a letter received by Mayor Raymond, George Faber, of Pittsburgh, says the city of Newark owes him 25 cents, borrowed in 1837, with interest. The writer enclosed a certificate signed by Abram Beach, who was city clerk in 1837, and by James Keena, then city treasurer. Mayor Raymond turned the letter over to City Treasurer Day, who said he would inform Faber that he is ready to pay the principal and interest for the life of the bond, part of a \$20,000 loan obtained by the city in 1837 and payable in 20 years.

our mountain store houses of health for all our people should become our great asset for the future—"See-American-First."

To nearly all readers of The Journal, the sixth page, Section 1, will be more interesting and of greater benefit than any other. Don't over-look it.

Advertisement for PHEGLEY & CAVENDER, featuring 'New Fall Suits and Overcoats Arriving Daily—We Want You to See Them.' Includes a list of suits and overcoats with prices, such as 'YOUR CHOICE \$13.50 WHILE THEY LAST'.

Federal Reserve Bank Statement for San Francisco, Cal., Aug. 7.—(U. P.) Federal reserve bank of San Francisco: Statement of condition at close of business August 7, 1915.

Advertisement for J.G. MACK & CO., featuring 'Outdoor Furniture' and 'A Decorator of Experience'. Includes a list of furniture items like 'Reed Arm Chairs and Rockers' and 'Artistic Rattan Arm Chairs' with prices.