

WAGES AND EMPLOYERS TO DISCUSS NEW SCALE. Heads of Union and of the Steamship Line to Meet in Seattle Tomorrow.

PORTLAND IS INTERESTED Demands of This Port for Equality With Puget Sound Brings About Conference.

Representatives of the waterfront employers and employees from points all along the coast will meet this week to attempt to frame a new scale of wages for which freight can be handled.

If this city is given the leave to enjoy its natural advantages, an equitable freight costs a winning fight for the commerce of the Pacific ocean can be started here.

The O'Connor president of the International Longshoremen's association; J. A. Madsen, secretary-treasurer of the association, and John Kean, president of the local coast division of that body are to be in Seattle tomorrow morning to commence the long series of negotiations which it is hoped will bring about this desired end.

To consult with them steamship representatives from all parts of the coast are headed towards Seattle. Later on Wednesday will be held here probably at San Francisco.

Yesterday the Chamber of Commerce was the dining place of a number of these men. Captain J. H. Bennett, vice president of the Yale-Harvard line; E. C. Ward, general manager of the Pacific Coast Steamship company; Captain J. S. Gibson, head of the International Longshoremen's association; and C. W. Cooke, head of the American-Hawaiian Steamship company, were present.

Within the past year organizations of both employers and employees have been perfected just for such an emergency. Representatives of both organizations will be empowered to act. Due to this fact both sides expect to be able to reach a decision quickly and without trouble.

Without O'Connor, the president of the International, was here three months ago, he told the representatives of the Chamber of Commerce that conditions in the north Pacific were not just.

"There is a feeling of unrest among both men and women which shows that something is wrong," he said. "I am coming back with the intention of removing this feeling and placing in its place one of quiet and satisfaction."

"Conditions have changed all over the country and people look at things in this light," said one steamship man yesterday. "The labor interests are going to find that we are just in our contentions and that we have gained in the past. We only ask fair treatment."

"The labor interests are going to find that we are just in our contentions and that we have gained in the past. We only ask fair treatment."

"The labor interests are going to find that we are just in our contentions and that we have gained in the past. We only ask fair treatment."

"The labor interests are going to find that we are just in our contentions and that we have gained in the past. We only ask fair treatment."

"The labor interests are going to find that we are just in our contentions and that we have gained in the past. We only ask fair treatment."

"The labor interests are going to find that we are just in our contentions and that we have gained in the past. We only ask fair treatment."

"The labor interests are going to find that we are just in our contentions and that we have gained in the past. We only ask fair treatment."

GRAIN CARRIER WRECKED

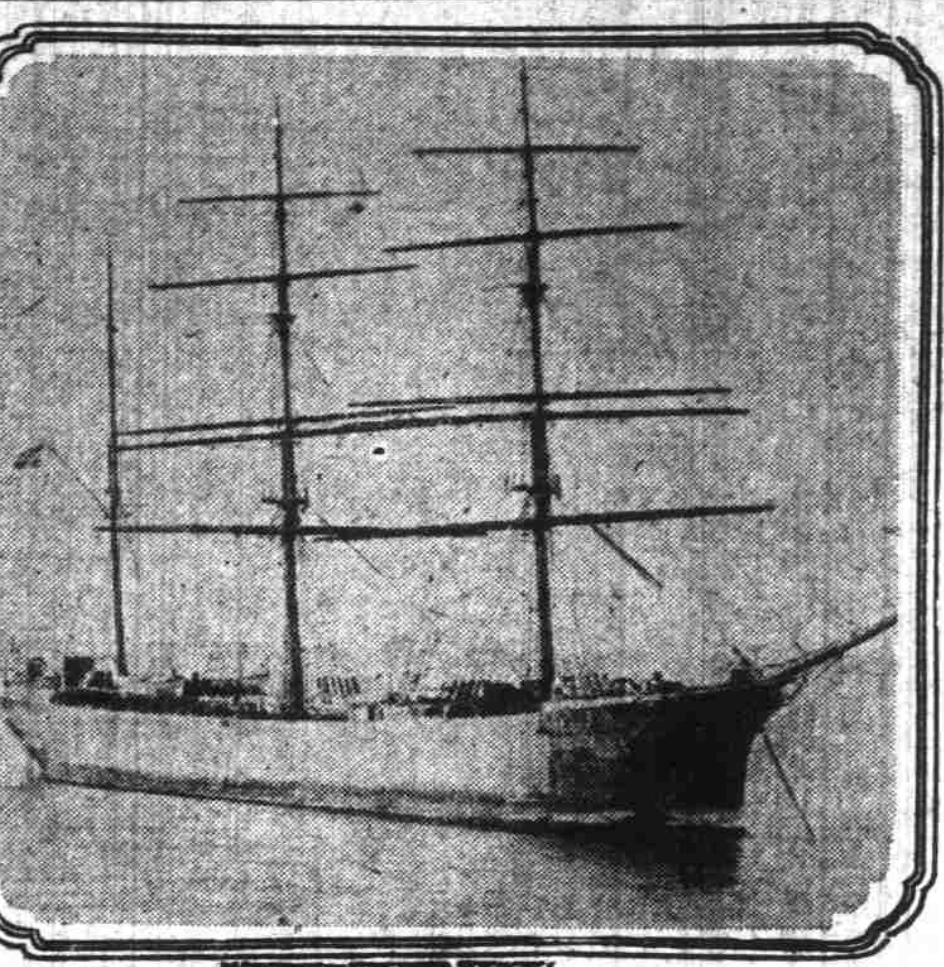


Photo by Werner Eckhardt. Norwegian bark Birtha.

Birtha was wrecked just above the eastern entrance to the Panama canal from which she had only a few days before made her way. The Birtha was dispatched from Portland by the Northern Grain & Warehouse.

But for the activities of the German commerce raiders the 1914-15 grain fleet would so far have gone through with the record of but one missing ship, the Norwegian bark Birtha. The birthing was wrecked just above the eastern entrance to the Panama canal from which she had only a few days before made her way.

haggling with the officers over terms. Negotiations were under way till nearly midnight. Students of Lincoln high school, bound on their annual class boating party on the steamer Bailey Gatzert, added to the excitement, finding their way through the camp to their steamer, which lay just outside the Dalles City.

CHANNEL SURVEY STARTS Chinook's Spring Work Believed Successful; Dredger Busy. Astoria, Or., June 5.—Having put in a very successful week at the mouth of the river, government dredge Chinook came to harbor this evening to lay up over Sunday. During the four days that the digger worked she removed 8000 cubic yards of material. Captain Marino is highly pleased with the manner in which the dredger is now working and is expecting great results from the present operations.

United States engineers left for the mouth of the river yesterday morning on board the George H. Mendell to complete the annual June survey of the channel. It is expected that the investigations will show a big increase in the depth of water over last September. The information will be made public within the next few days.

THE MACKINAW SAILS AGAIN Burned Steamer Repaired Quickly; Kenken Maru No. 11 Sails. Two steamers sailed for Portland, one from San Francisco and the other from Seattle, last night in which Portland firms are very interested. The American steamer Mackinaw, which a week ago was ashore and drifting helplessly in the Pacific off the Kenken Gate, has been repaired and sailed from the Bay City. She will load a cargo of wheat here for Australia delivery.

The Japanese steamer Kenken Maru No. 11 sailed from Seattle with a cargo of 2200 tons of sulphur, which she will discharge at Municipal Dock No. 2. She will be the first steamer to Kennebec and way points only and the upper river town her freight for Lewiston will be transferred to the steamer Inland Empire.

HIGH TIME CHARTER FIXED \$180,000 Paid for Japanese Steamer Offered Year Ago for \$60,000. Seattle, June 5.—(I. N. S.)—Frank Waterhouse and company today chartered the Japanese Gishun Maru, a vessel of 3000 tons dead weight capacity, at one of the highest rates ever written on this coast. The rate is 10 shillings 3 pence per diem per dead weight ton, or \$15,000 a month. The charter was offered for a year ago at \$60,000 a year. The Gishun Maru is to be placed in the Seattle-Vladivostok trade and will be

Heavy Fog Off Coos Bay. Marshfield, Or., June 5.—(I. N. S.)—There is a heavy fog on the bar and signalling of the fog warning. Steamer Nann Smith sailed from Marshfield this afternoon and will probably cross out tonight. The small

Table: GRAIN TONNAGE EN ROUTE AND LISTED FOR PORTLAND. Columns include Name, Flag and Rig, Tons, From, and Sailed.

Table: Miscellaneous to Arrive in Portland. Columns include Name, Flag and Rig, Tons, From, and Sailed.

Table: Panama Canal Service. Columns include Name, Flag and Rig, Tons, From, and Sailed.

Table: West Coast Service. Columns include Name, Flag and Rig, Tons, From, and Sailed.

Table: European Service. Columns include Name, Flag and Rig, Tons, From, and Sailed.

Representatives of the waterfront employers and employees from points all along the coast will meet this week to attempt to frame a new scale of wages for which freight can be handled.

NEWS OF THE PORT

Arrival June 5. Wm. F. Herrin, American steamer, Captain Englin, bulk oil from Gaviota, Associated Oil company. Nevada, American steamer, Captain Knight, freight from Boston and New York via California ports, American-Hawaiian Steamship company.

Departure June 5. El Segundo, American steamer, Captain McKellar, water ballast for San Francisco, Standard Oil company.

Marine Almanac. North Head, Wash., June 5.—Condition of the mouth of the river at 5 p. m., smooth; 8:20 a. m., 18 miles; weather, B. Sun and Tides, June 7. Sun rises, 5:22; sets, 7:59 p. m. Tides at Astoria. High water, 9:23 a. m., 8.5 feet; 1:14 p. m., 2.6 feet.

Daily River Readings. Stations: Lewiston, 24.9; Umatilla, 25.1; Albany, 20.5; Wilkesville, 27.6; Portland, 15.1.

River Forecast. The Willamette river at Portland will fall slowly for the next two or three days.

Steamships to Arrive. Name, From, Date. Kennebec, S. F., June 6. Sena Clara, S. F., June 6. Breakwater, S. F., June 6.

Steamers Due to Depart. Name, To, Date. Kennebec, S. F., June 6. Sena Clara, S. F., June 6. Breakwater, S. F., June 6.

Vessels in Port. Name, From, To, Date. Kennebec, S. F., June 6. Sena Clara, S. F., June 6. Breakwater, S. F., June 6.

Out of Yukon June 20. Seattle, Wash., June 5.—(I. N. S.)—Today's cable advices to local shipping men as to the opening of the Yukon and the resumption of steamboat navigation this season indicate

HERE IS WHERE TO VOTE AT TOMORROW'S ELECTION

The Journal Furnishes Its Readers With Location of Polling Places in the City Where Balloting for Commissioners and Auditor Takes Place.

Table: Precinct, Location of Polls. Lists various precincts and their corresponding polling locations.

219-378 Holladay Ave., bet. E. 1st and 2d St. 220-234 Holladay ave., near Larrabee st. 221-198 E. Broadway, Store building.

224-184 Larrabee st., cor. Dupont, basement. 225-Broadway Central, bet. Broadway and First. 226-Irving Garage, E. 14th and Broadway.

227-Garage, 604 Broadway near E. 19th st. 228-1207 E. 17th St., bet. 12th and 13th St. 229-Eng. house 18 E. 24th bet. Thompson

230-424 Union ave., bet. Eugene and Tillamook. 241-437 Russell bet. Williams and Rodney. 242-262 Williams ave. N., bet. Graham and

243-Wy Williams Ave. No. 244-723 Williams ave. No. bet. Morris and Moore Sts. 245-232 Russell bet. 71st and Gastenber.

246-184 Larrabee st., cor. Dupont, basement. 247-184 Larrabee st., cor. Dupont, basement. 248-184 Larrabee st., cor. Dupont, basement.

Table: United States Weather Bulletin. Columns include Station, Precipitation, Wind, Clouds, etc.

Observations taken at 5 p. m., Pacific time, May 29, 1915. The pressure is high on the north Pacific coast...

Gypsy Paid His Debt by Giving Back Stolen Rope

J. B. Gross, bill clerk of The Dalles, Portland & Astoria Navigation company, made a statement yesterday that a gypsy who went to the Dalles on the steamer Dalles City yesterday.

Shortly before the steamer left, the gypsy came into the office of the line and asked for a doctor. "My youngest kid, he sick," said the gypsy. "Give him dose of sassafras."

Gross finally resorted to the police station and Dostor Rice, emergency hospital interne, responded. The baby was revived and the father's tears were allayed.

Just before the steamer sailed the gypsy came into the office of the line and asked for a doctor. "My youngest kid, he sick," said the gypsy. "Give him dose of sassafras."

Gross finally resorted to the police station and Dostor Rice, emergency hospital interne, responded. The baby was revived and the father's tears were allayed.

San Francisco Hotel Rates Are Not High

Benefits of Golden Gate Are Making Effort to Correct False Report; Palace Charges \$2.50 to \$6. San Francisco hotels are advertising their normal rates.

San Francisco hotels are advertising their normal rates. Since the big exposition opened there has been considerable complaint concerning the charge of some hotels by returning travelers and finally echoes of their protests have been heard by bonifaces of the Golden Gate and they are making efforts to counteract the adverse effect of such reports.

High rates, however, are not being charged by the highest class hotels of San Francisco. From the first they have stood for the protection of the visitor and despite the strong temptation to take advantage of the situation, have from the first maintained normal rates that obtained before the exposition opened.

For example, inquiry at the Palace hotel in San Francisco shows that its rate now is the same as it was prior to the fair. It has 100 rooms at \$2.50, 150 at \$3, 150 at \$3.50, 100 at \$4, 100 at \$5 and \$100 at \$5, while suites range from \$7 per day upward.

Reporters reaching here are to be effected that the Fairmont likewise has not raised its rate. The British steamer Wellington has been chartered to carry lumber from Genoa Bay, E. C. to New York. She is at Victoria, and will load at once.

War to Be Waged Upon Smut Evil. While the crops are growing, "Farmer" C. L. Smith of the O-W-R. & N. company is planning to start out over the company lines in Washington, Idaho and Oregon to see what can be done against the smut evil which has been incidentally he will demonstrate general agricultural methods, dairying, hog raising and general diversified farming.

City of Chicago Enjoined. Chicago, Ill., June 5.—(I. N. S.)—Through exposure to fires he contracted rheumatism and now is afflicted with a complication of ailments. Shane was a member of Engine Company No. 7. He caught a severe cold at a fire and contracted tuberculosis. At the time he was paying for a home for his aged mother. He lost that home, however, being unable to keep up payments on same taken ill.

Weather Conditions. The pressure is high on the north Pacific coast. The wind is from the north and the northern Rocky mountains state, the middle and north Atlantic states. The pressure is low over the southern Rocky mountains and the northern Pacific coast.

Water Meters. 100-101.—An ordinance authorizing the purchase and installation of water meters for the city of Portland, Oregon, was passed by the city council today. The ordinance provides that the water meters be installed for the purpose of measuring the consumption of water by the city.

WAGONS OF SCENE OF OFFSHORE SHIPPING. Steamers for Carrying of Recent Lumber Order Given by Admiralty. WELLINGTON CHARTERED. Fir Cargoes Will Move to London, Port Nelson and New York; Niagara In From Australia. Vancouver, B. C. June 5.—(I. N. S.)—Bound for New York by way of the Panama canal, the British steamer Roton Castle, which came here from the far east to replenish her bunkers at Comox, passed out to sea yesterday from the Vancouver Island port. The American steamer Kenyon, laden with a cargo of steel and general merchandise, was scheduled to leave New York on Wednesday for Vancouver via the Panama canal. She is expected to arrive here toward the latter part of the present month. The British steamer Durley Chine posted to arrive at Victoria from Halifax on Tuesday next for orders, and will shift from there to the Fairmont wharf to take on a full cargo of lumber for the construction of terminals at Port Nelson, the terminal of the Hudson Bay railway. The lumber will be shipped at the Fairmont wharf. The steamer Spectator has been substituted for the Chancellor to take the July sailing from the United Kingdom for here to the Fairmont wharf. The British steamer Trevine, now on government service, is daily expected at Esquimaux. She will report at the Fairmont wharf, going to Chetumal and coming to Vancouver to load the first of the 10,000,000 feet lumber order for the admiralty. She is now on the Pacific coast at an unknown port. The cargo includes automobile tires, canned salmon, wagon wheels and fruit. The Japanese steamer Sado Maru will arrive here tomorrow from Yokohama with 4000 tons of freight and 45 passengers. She passed in at Cape Flattery this morning and proceeded to Victoria to discharge 800 tons.