

PORTLAND, OREGON, SUNDAY MORNING, MARCH 21, 1915.

LESSONS IN VOTING ON PUBLIC ISSUES UNDER DISCUSSION

When in Doubt Refrain From
Voting, Says W. S. U'Ren
and W. F. Ogburn.

OTHERS SAY, VOTE "NO"

Interesting Debate Held Before Oregon
Civic League Luncheon at Mul-
nomah Hotel Yesterday.

"When in doubt, refrain from vot-
ing," counseled Professor W. F. Og-
burn, of Reed college, and W. S. U'Ren
in a debate before the Oregon Civic
League luncheon at the Mulnomah hotel
yesterday afternoon.

"When in doubt vote 'No,'" rebutted
L. F. Levings and James B. Kerr.
Richard W. Montague presided over
the debate, but the general public is
permitted to decide which side was
right.

"If people learn the habit of vot-
ing 'No' when in doubt, they will nullify
the initiative and referendum," pre-
dicted Professor Ogburn, who opened
the debate.

"The Oregonian" and some country
newspapers have been giving this ad-
vice, but to take it will result in the
neglect of civic duties.

"It will be hazardous to secure the
enactment of progressive legislation if
people learn the habit of voting 'No'
when in doubt.

"If five percent of the doubtful ones
had voted 'No' in the issue of the
woman's suffrage the measure would
have been defeated."

The speaker produced a long list of
figures of the vote on various meas-
ures, showing how in his opinion if
doubtful voters had cast negative bal-
lots worthy causes would have been
defeated.

"I used the same figures and they
proved to my satisfaction that it is
only safe to vote 'No' when in doubt,"
rejoined L. F. Levings.

"And then when I cast the figures
up in another way they proved me a
liar in seven different languages.

"In other words, the argument based
on 'if' or conjecture will not hold.

Things to Consider.
"The thing that should govern the
vote on a measure is whether that
measure is necessary to public welfare.
It is not wise to exchange the known
and the satisfactory for the unknown
and the possibly vicious."

"I don't go so much on people who are
satisfied with conditions," declared W.
S. U'Ren, and the remarks were ap-
plauded. "That kind of people rarely
amount to anything. From the begin-
ning, the big interests—the reaction-
aries and standstillers, the Tories—of
Oregon have been trying to kill the
initiative and referendum, and one of
their methods has been to try to in-
duce the unintelligent to vote 'No' by
disseminating the advice, 'Vote 'No'
when in doubt.'"

"I believe that on referendum meas-
ures, issues that have been given to
the people for decision by the legisla-
ture, people should vote only their pos-
itive convictions," said James B. Kerr.
"But I would say, as to initiative
measures, the new, the untried, vote
'No' when in doubt."

Postoffice Receipts Show Increase for 19 Days of March

* For the first 19 days of
* March, with receipts of
* \$65,494.92, the tide has turned
* at the Portland postoffice, and
* receipts are again on the up-
* grade. This amount is \$1,
* 27.54 more than the receipts
* for the first 19 days of March
* 1914. Receipts show a loss for
* January and February, as com-
* pared to the same months last
* year.

Funds to Be Secured By Holding Benefit

Child Welfare Commission Has No
Appropriation With Which to Con-
duct Its Affairs.

Plans are being laid to further the
work of the Oregon child welfare
commission by securing funds through
a benefit performance to be given at
the Heilig theatre, early in April.
The commission appointed by the
governor carries no appropriation.
Various phases of educational and
recreational problems are studied as
well as the physical and moral de-
velopment of the children, also in-
stitutional care. Statistics are gather-
ed and knowledge disseminated that
can be used for the protection of the
boys and girls. The work is similar
to that carried on by the Federal
Children's Bureau at Washington, D.
C. This bureau has cooperated with
the commission and assisted in the
recent efforts made to secure more
adequate birth and death registration
laws; it has also aided through its
printed material in framing a proper
law on prevention of infant blind-
ness. The commission finds there is
great need for further protective leg-
islation governing the children of the
state. The prompt action of this benefit
performance will be of unusual in-
terest and is being planned by Mrs.
Harry E. Chipman. The members of
the commission are: Mrs. Robert H.
Tate, president; Dr. R. Alderson, sec-
retary; Dr. Mae H. Cardwell, Mrs.
John H. Smith, Astoria; Dr. George
Rebec, Medford.

Saloonless Fifty Years.

Polo, Ill., March 20.—Great prepara-
tions are being made by the citizens of
Polo for the celebration of the fiftieth
anniversary of that day when the last
saloon was driven out of business. A
home coming is on the program, all
former residents being invited to the
celebration. A committee is at work
trying to fix a date and secure a
speaker of national reputation.

Silk Poplin Suits Now in Greatest Favor Are Here

In a Sale of Paramount Importance
Offering as It Does \$35.00 Silk Suits
That Are the Last Word in Spring Fashions
At \$24.85

—A mere glance at these suits will be sufficient to convince you of their superiority. The silk poplin used in their making is of an excellent quality, possessing a soft, silky sheen, and in colors that are most fashionable, such as navy blue, sand, Belgian blue and black.

—And the tailoring is what you would expect and demand in a much higher-priced garment.

—As to style, they are copied after one of the latest foreign models, reproducing a very attractive short jacket mode, which is plaited and flaring, having fancy silk collars and novelty revers. Skirts in flare and plaited effects. —Third Floor

A New English Walking Coat For Spring and Summer Wear

Featured at \$16.50
But Is a Regular \$22.50 Model

—Again we come forward with a great sale of English style coats for women. The first shipment arrived two weeks ago and every coat was sold almost immediately. Owing to the many requests for this style of wrap, we placed a second order, and this shipment will be offered Monday morning.

—The coats are made of a fine imported English tweed in gray and brown Scotch mixtures. In a style adapted from the Balmaean with flaring back and raglan sleeves, full 45 inches long. Lined across the shoulders and sleeves with satin. —Third Floor

\$5.00 Elastic Top
Silk Petticoats
In the New Flare Style
\$3.95

—Fitted petticoats with patent elastic tops, of fine soft-finished taffeta silk, as well as all-Jersey with messaline silk flounces. Shown in four new Spring styles, made with the new full, flaring flounces, trimmed with accordion and knife pleating combined with tucks and ruffles. Colors are black, navy, emerald, new green, sand, putty, battleship gray, army blue, white, pink and changeable effects. —Third Floor

Five New Models
in Our Popular
"Specialty" Blouses
At \$1.50
Made to Sell at \$2.00

—Even better than ever, if it were possible, are these new "Specialty" blouses of fine, soft-finish voile, in white or new sand shade. There are five distinct models, in all-over embroidered and plain lace-trim'd voile, featuring the new two-in-one flare effects, which can be worn in high or low-neck style, trimmed in several most attractive styles. —Third Floor



Our Own Importation—Just In—of
Pongee Silks

The Scarcest Silk Fabric Today
And Naturally One of the Most Popular
At Sale Prices—Unparalleled

—If you have any thought of buying pongee for a suit, a dress, for a waist or for a traveling coat, we urge that you do so now, for it is very doubtful if you can find pongee at any price a little later in the season. It is one of the scarcest silks and at the same time one of the most fashionable for Summer wear. The pongee in this sale is of the finest qualities we have ever shown, and washes perfectly.
\$1.00 Pongee, 26 inches wide, special 59c
\$1.25 Pongee, 34 inches wide, special 79c
\$1.50 Pongee, 34 inches wide, special \$1.19 —Second Floor

Real Hand. Emb Handkerchiefs
Of Pure Linen and Batiste, Also the
Newest English Voile Handkerchiefs
Selling Regularly at 50c, 35c and 25c
Monday 15c

—The hand-embroidered handkerchiefs show dainty butterfly and floral designs in one corner and one-quarter to one-inch hems, made of all pure linen. The fine lawn handkerchiefs show the new lock-stitch edges done in lavender, pink or blue, with embroidered designs in the corners. Those of voile are of a fine transparent quality in all white, with hems ranging from a half to two inches. —First Floor

We Forecast a Remarkable Sale of Crepe de Chine Underwear-- There's Every Reason for It--Quality--Economy

FOR GIRLS AND SMALL
WOMEN
These Wash Dresses
In Eton Jacket Style
Are the Very Latest
Special \$3.95
\$5.50 If Sold Regularly



—The first time we have offered a new Spring wash frock at a special price this season. And these dresses are unusually stylish and attractive, made of chambray or linene in new blue, green, pink, rose and sand color. —Made with a white blouse, with pleated front and short Eton jacket of the colored material, braided in white. Skirt is in a new, flaring model, with inverted pleats in front, finished with belt at waist. Collar and cuffs of white lawn, the frock completed with a wide, black satin tie. —As illustrated.—4th Floor

2000 Yards Spring Dress Fabrics
From the Foremost American Mill—In Very
Newest Weaves—In Most Fashionable Shades
—Poplins, Whipcords, French Serges, Granites, Melrose, Storm Serges, Baratheas, Black and White Checks and several new weaves in Cream Suitings.
—Materials that are in greatest favor for Spring tailored suits and one-piece dresses—materials that are of the finest qualities that have ever been offered at so low a price. In cream and all the leading shades, such as delft blue, midnight blue, Belgian blue, green, navy, heliotrope, gray, sand, putty and black.
Monday Special \$1.19 —Second Floor

45 Limoges China Dinner Sets From
Theodore Haviland
At Two Exceptional Prices
\$11.48 \$13.98
For a 47-Piece Set For a 53-Piece Set

—Delicate spray decorations in the exquisite tones of French wild flowers, showing six different designs. Gold stipple is used on every set. The meat platters have gravy wells.
—The 47-piece set consists of one covered vegetable dish, one pickle dish, one 10-inch platter, one 12-inch platter and six dinner plates, breakfast plates, bread-and-butter plates, soup plates, fruit saucers, tea cups and saucers.
—The 53-piece set consists of six dinner plates, breakfast plates, bread-and-butter plates, soup plates, fruit saucers, tea cups and saucers, one 16-inch platter, one covered vegetable dish, one sauceboat, one covered butter dish, one open vegetable dish, one sugar bowl, one creamer. —Sixth Floor

Mrs. Housewife, Here's a Curtain Treat
300 Pairs of \$5.00, \$6.00 and \$6.50
Lace and Scrim Curtains
Which Go on Sale Monday Morning
At \$2.87 Pair

—Seldom if ever is it possible to buy curtains of the regular \$5.00 and \$6.50 qualities in fresh, new stock and in the newest patterns in a sale of such importance as this. But these are just the kind of curtains you will find tomorrow at the remarkable price of \$2.87 a pair.
—There are new fillet scrims and French net curtains, made with fine lace edges and insertions to match. Also new fancy braided borders. These curtains come in white, cream and Arabian color, full 2 1/2 yards long, and in the assortment there are curtains suitable for every room. —Fifth Floor

Drapery Materials Greatly Reduced
—Materials that reflect the new patterns, designs and colorings, all fresh, beautiful fabrics that are suitable for bungalows, for Summer homes, for bedrooms, living-rooms. Plain and fancy scrims, nets and madras.
60c Colored Madras . . . 49c 45c, 50c Fancy Scrims, 29c
35c Fancy Scrims . . . 21c 25c Curtain Nets . . . 19c
45c Curtain Nets . . . 29c 50c Curtain Nets . . . 39c —Fifth Floor

Exquisite Garments at Lowest Prices We've Ever Known
—Never before have we been able to show such an interesting and extensive collection of crepe de chine undergarments in a special sale, and with prices so extremely low. Skirts, combination suits, envelope chemises, corset covers, night gowns, and a new three-piece garment combining the envelope chemise and corset cover, one part to be worn under the corset and the other part over the corset.
—All garments of a fine quality crepe de chine, which can be had in pink or white and most effectively trimmed with laces, insertions, hemstitching, beading, ribbons, chiffon roses, applique laces and nets. The skirts are cut with full flaring flounces.
\$4.25, \$4.50 Skirts \$3.48 \$5.50, \$6 Gowns \$4.69 \$3.00 Envelope Chemise
\$5.00, \$6.00 Skirts \$4.35 \$6.50, \$7 Gowns \$5.79 for . . . \$2.39
3-Piece Suit . . . \$4.49 \$3.75 Combinations and \$5 Combination Suits
\$1.50 Corset Cover \$1.15 Envelope Chemise \$2.98 Envelope Chemise \$3.95 —Fourth Floor

THIS IS SPRING CORSET WEEK —A SALE

EXCLUSIVE NEW MILLINERY
That Cannot Be Surpassed at
\$10.00 to \$15.00

—IT IS A SEASON OF BECOMING MILLINERY—that without question. We believe that no woman could walk through our Millinery Salons now and fail to see almost at a glance a dozen, fifteen, twenty hats with any of which she would be more than satisfied.
—Hundreds of models are here, no two alike, each with a different treatment of trimming and color. Dress models in hemp straw with facings of maline or Georgette crepe, large sailor shapes, shepherdess and poke bonnets, turbans and tricorne for tailored and semi-dress wear, with exquisite flower trimmings in most beautiful natural colors, smart ribbon bows and streamers, in styles suited to every type, for the miss or matron. —Second Floor

Household Linen Sale
The time of the year to buy linens is—NOW
The place to buy them is—Lipman-Wolfe's

Supply Your Needs Monday at Lowest Prices
MERCERIZED TABLE CLOTHS IN NEW PATTERNS
Regular \$1.10 Cloths, size 58x58 inches. 89c
Regular \$1.75 Cloths, size 2x2 yards. . . \$1.15
—Just received these cloths, which are remarkable bargains at these very low prices. They come in a beautiful, satin mercerized finish, in the new circular floral designs, which usually are only made in more expensive cloths. There are pansy, poppy and rose patterns artistically designed. For every-day wear and for summer cottage use these cloths are ideal, as they will launder beautifully.
\$1.75 PURE LINEN LUNCH CLOTHS, \$1.19
—German linen lunch cloths, silver bleached, in your choice of several pretty designs. Size 57x60 inches. Splendid cloths for every-day wear. Hemmed ready for use.
60c SILVER BLEACHED DAMASK, 48c YARD
—This is less than import cost today. Comes 60 inches wide, in dice pattern. A firm, evenly woven damask, very desirable for restaurants and hotels.
TURKISH BATH TOWELS—SPECIAL 39c
—Extra heavy, two-ply cotton, firmly woven bath towels, in plain white, with hemmed ends. Extra large. Size 25x54 inches.
CASTLETON LINEN-FINISH SHEETS
Size 2 1/2 x 2 1/2 yards, 68c Size 2 1/4 x 2 1/4 yards, 72c
Sheets, sizes 2 1/4 x 3 yards, special 83c
—The best sheets on the market today for long service. Made of good, clean cotton, free from dressing. Torn before hemming. Made with 3-inch head and 1-inch foot hem.
CASTLETON PILLOW CASES TO MATCH
Size 42x38 1/2 inches, 17c ea. Size 45x38 1/2 inches, 18c ea.
25c HEMSTITCHED, EMBROIDERED PILLOW CASES
19c EACH
—Made from fine, evenly woven cotton and free from dressing. Neatly hemstitched and embroidered, with space for monogram. —Basement

—Now our hour is chiming—we are helping women every day in the scientific art of corset fitting. More and more women are seeking our expert corset service.
Tomorrow We Inaugurate by Special Arrangements
—Corset Week, designed primarily to attract new patrons to this department.
—Through the courtesy of some of the foremost corset manufacturers we have secured
New Spring Models at Special Prices

for which we have special demonstrators and fitters, who will be pleased to explain to you their individual merits.
\$2.00 W. B. CORSETS, \$1.69
—Made of coutil with low and medium bustline, long and medium length over hips and back. Finished with embroidery. Three pairs of supporters attached. For slender and medium figures. Sizes 19 to 32.
\$2.50 W. B. CORSETS, \$1.79
—Of fine coutil with medium bust, and medium length over the hips and back, new curve-in at the waistline, bones finished with silk floss, trimmed with lace and embroidery. Three pairs of supporters attached. Sizes 21 to 30.
\$3.50 W. B. CORSETS, \$2.29
—Made of striped coutil, medium high bust, medium length over hips and back, slightly curved in at the waistline, elastic lacing, 3 pairs hove supporters attached. Sizes 19 to 20. Good for all figures.
\$3.50 W. B. ELASTINE REDUSO CORSETS, \$2.25
—In sizes 21 to 36. Made of splendid quality coutil, medium bust and long over the hips and back. Elastic gores on the fullest part of the hips. Three pairs of heavy supporters attached. Reinforced over the abdomen for full figures.
SELF-REDUCING NEMO CORSETS, \$5.00
—Are now being shown in models suitable for the average and full figures. In sizes 22 to 36. Made of dainty silk flowered brocade, in white or pink.
\$1.50 BRASSIERES FOR \$1.00
—Made of fine cambric with wide embroidery at the top and bottom, which forms the V-shape neck, edged with fine Valenciennes lace. Hook-in-front style. Sizes 34 to 46. —Fourth Floor

Lipman Wolfe & Co.

Merchandise of Merit Only

MEN

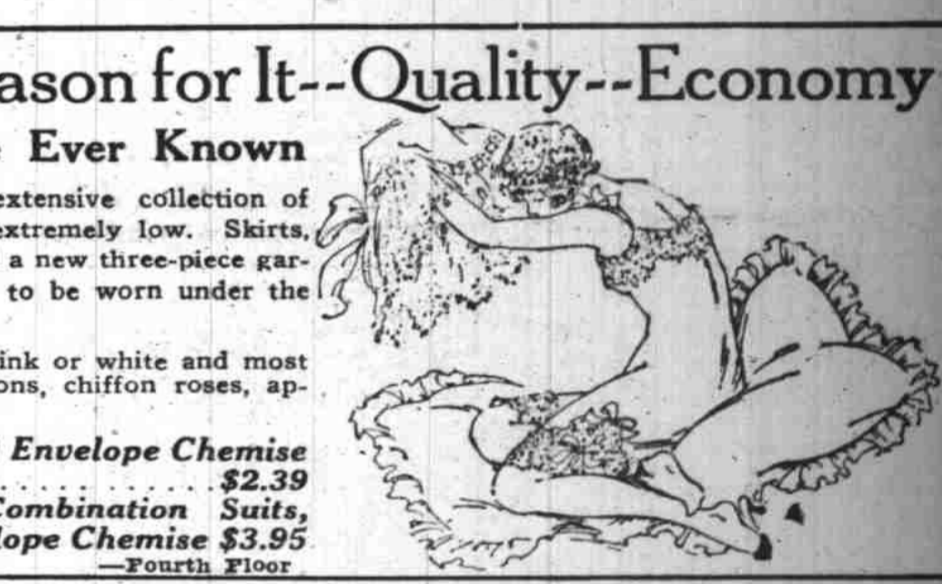
A FACT is like a birthmark—you can cover it up, but you can't rub it out. It's an unbudging fact that shirt sales in this store have come to be known as reliable, dependable, fruitful.

Tomorrow We Place on Sale
1056 Men's Shirts
Not One Less Than \$1.50 and Many to \$2.00
At the Astonishing Price

98c

—Plain negligee shirts with stiff cuffs. Plaited-bosom shirts with stiff cuffs. Semi-dress shirts in white with plain and plaited bosoms. Soft shirts with French turn-back cuffs.
—Shirts of imported materials—madras, French percales, silk-finished shirtings, all in attractive plain or novelty stripes, absolutely fast colors, which launder perfectly

LEADERSHIP in business is impossible
Nowadays without public confidence.
You have our assurance that this is the most forceful, satisfying sale of shirts ever held in the city—bar none. —First Floor



Sale of Gray Switches and Transformations
HAIR \$3.15 switches, 18-in. \$7.85 switches, 24-in.
for . . . \$1.95 for . . . \$4.95
\$4.15 switches, 20-in. \$7.45 transformations
for . . . \$2.95 for . . . \$5.95
GOODS \$6.25 switches, 22-in. \$10.45 transformations
for . . . \$3.95 for . . . \$7.45
—Experts in attendance will guarantee a perfect match. —Second Floor