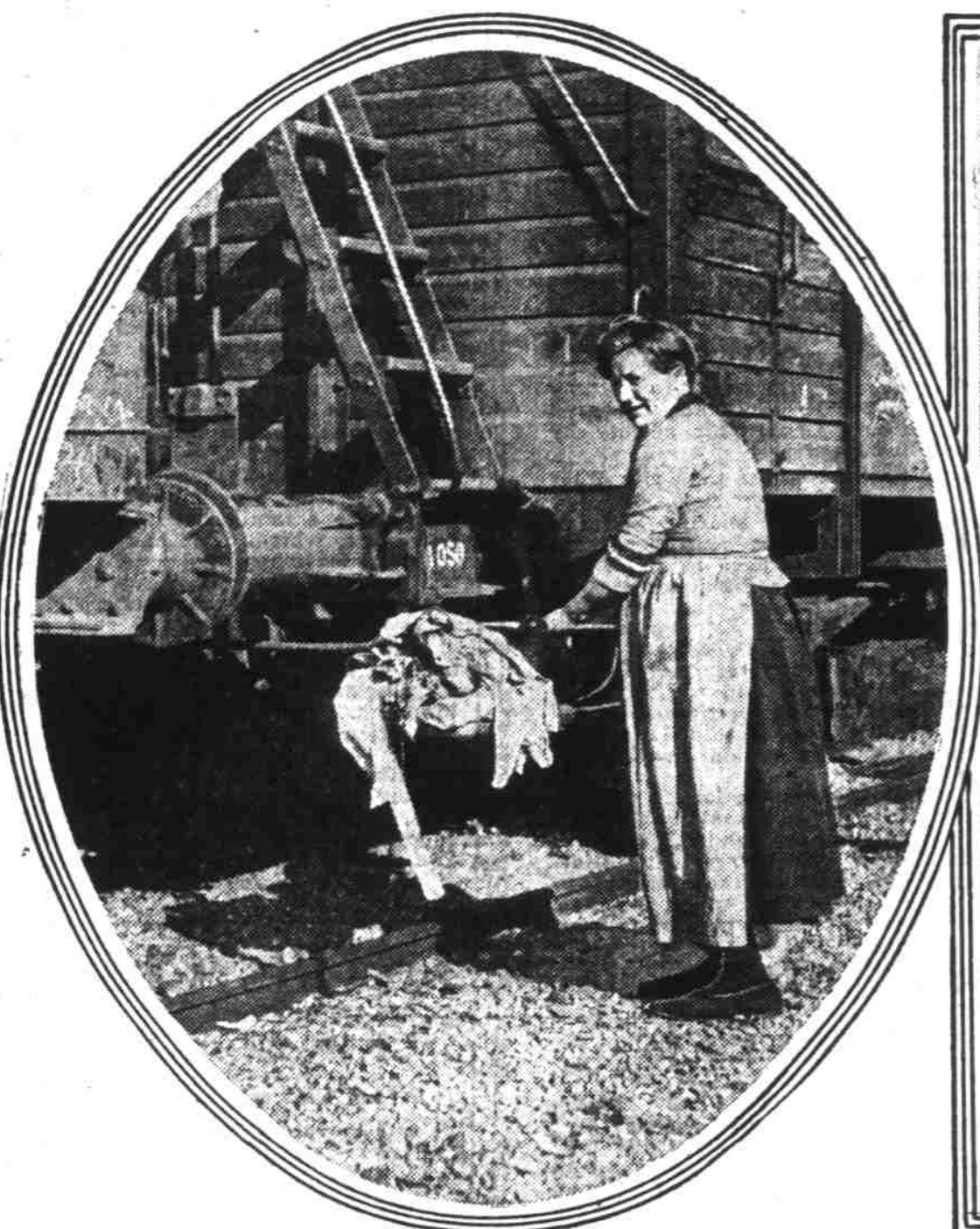
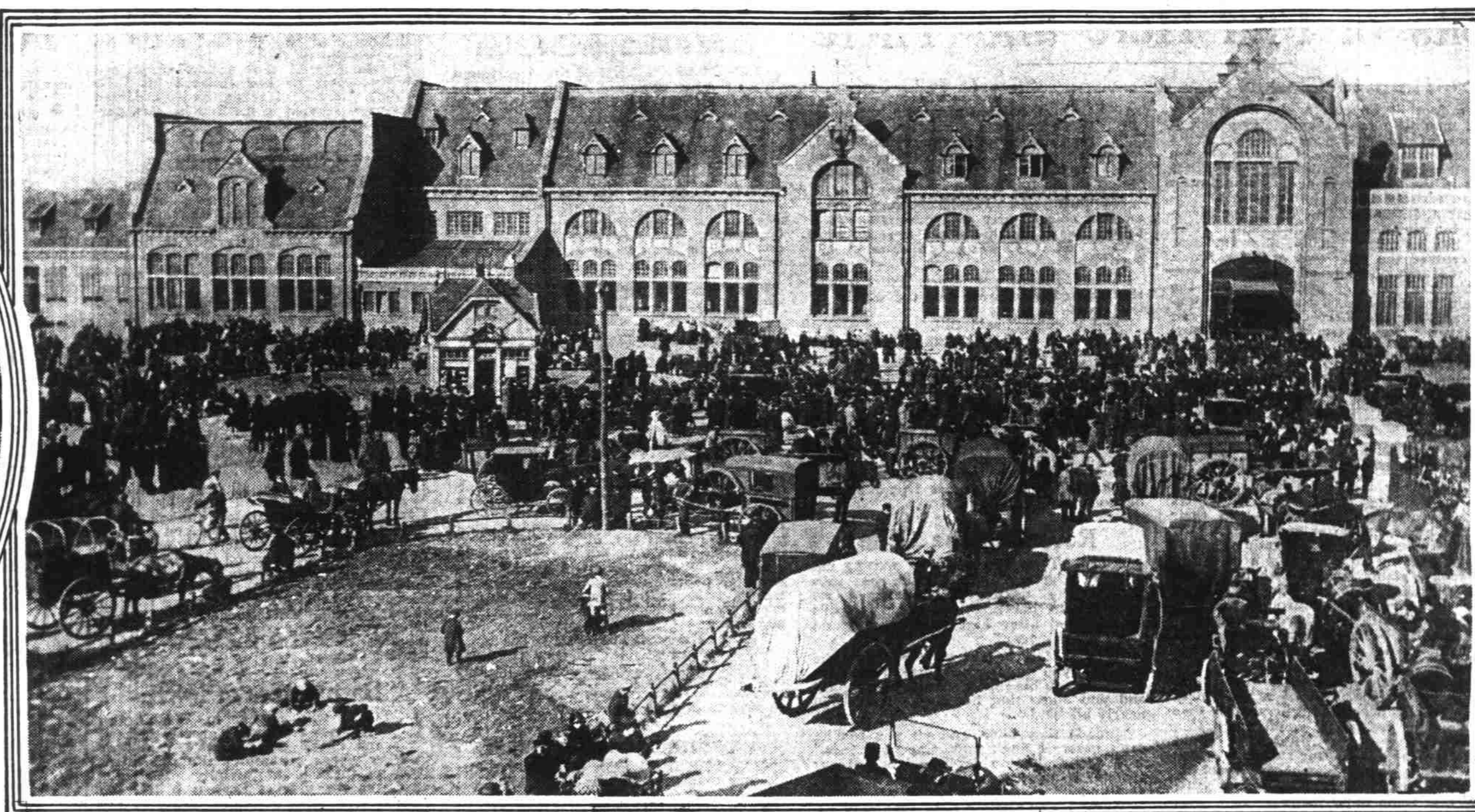


# WHAT IS THE LOT OF THE NON-COMBATANTS IN THE WAR ZONE



**HER HOME IN A FREIGHT CAR**  
Before Antwerp fell, the Belgian government sent all available freight cars into Holland, where they are used in housing Belgian refugees.



**ARRIVAL OF BELGIAN REFUGEES IN ROSENDAAL, HOLLAND**  
When Antwerp fell, the Belgians were forced to flee to Holland. They arrived in droves at Rosendaal like an American crowd on circus day in some small town. The figure speech is expressive of their numbers only for, unlike the circus crowd, they were sad, a homeless band of countryless people who know not what fate holds in store for them. It is stated that more than 750,000 Belgian refugees reached Rosendaal within 48 hours.



**MADE WAYFARERS BY THE WAR**  
This photograph, taken in one of the larger Belgian cities, shows a group of residents, most of them children, preparing for flight. Some of them went to England, but most of them went to Holland.  
—Photographs by Courtesy of Press Department, Eastman Kodak Company.



**BELGIAN REFUGEES IN HOLLAND**  
In their effort to locate relatives and friends, the refugees chalked their names and messages upon walls, as is seen in the background of this photograph, before which sits a homeless family.



**THEY SET FORTH FOR A NEW LAND**  
With all his worldly possessions in a wheelbarrow and accompanied by his children, this Belgian peasant is on his way to the frontier that he may enjoy a haven of safety in Holland until war is ended.



**A WOUNDED GERMAN BEING CARED FOR BY THE BELGIANS**  
Belgian Red Cross workers are seen rendering what aid they can to the stricken German soldier who has been removed from a hospital train. This photograph was taken near the French frontier in Belgium during the earlier stages of the war.