

WILL PORTLAND TO ATLANTIC SEABOARD LUMBER RATE DROP?

Question Uppermost on the Waterfront Since Removal of Charge for Deckloads.

OPTIMISTIC FEELING SEEN

Lumber Men and Steamboat Men Share in Feeling of Increased Confidence in Outlook.

Will the Portland-Atlantic coast lumber rate drop? That question is the one of paramount interest on the waterfront since President Woodrow Wilson withdrew the charge on lumber carried on deck by steamers passing through the Panama canal.

The company operating into Portland most vitally interested in the deck load question is the W. R. Grace & Co. Their company operates a fleet of specially constructed steamers, the basis of whose eastbound cargoes was expected to be lumber.

"While our company has made no announcement of any reduction in the price for handling lumber between Portland and New York and the Atlantic coast ports, we expect one soon," said George M. McDowell, local manager for W. R. Grace & Co.

"Our present rate between Portland and New York is \$13 and we have handled some lumber that figure. The steamer Santa Cruz due here today will carry 600,000 feet outward while other steamers have been taking similar quantities.

"I have talked with numerous lumbermen within the past few days, and one and all believe that the deck load question solved the movement to the Atlantic coast will increase. Reports from that section of the United States indicate that the business is in a new condition. Building is always the first branch to feel the effects of better times and if they build back there it will be largely with our lumber.

Produce Chief Gainer. In view of the advantages gained through the withdrawal of the deck load charges it was expected that the producer should secure the largest benefit and as a result I think it is reasonably certain that the rate will drop. This will give the Portland manufacturer a better chance to compete for this business and undoubtedly will mean larger profits.

McDowell's ideas are coincided in by many steamship men in Portland. They expect to see many small vessels enter the coast to coast trade at any time now. This competition will not cause the larger lines to drop the rate, they say, and the heavier business is deemed inevitable.

FINISHES CARGO OF LUMBER

Norwegian Bark Loads at Vancouver, British Columbia.

Vancouver, B. C., Feb. 20.—Fully laden with a cargo of lumber, the bark Morna, Capt. Dan Killman, of the Norwegian bark Wolf, Captain Salvesson, is shifting today from the inner harbor, Victoria, to the outer harbor, where she will remain for a few days while her crew is being shipped. It is expected that she will get to sea about Monday next and that she will reach her destination in 100 days.

BODY IS NOT RECOVERED

Grappler Works All Day but Unable to Get Any Result.

Murderer of the Rev. William Sullivan, mate of the American schooner H. K. Hall, yesterday, although he worked all day, Sullivan was not recovered from the wreckage of the vessel's hull, which was raised from the bottom of the harbor by the tugboat Delagoa Bay with Captain Killman.

DARIEN WIRELESS OPERATING

Plan Has Already Proved Its Commercial Worth.

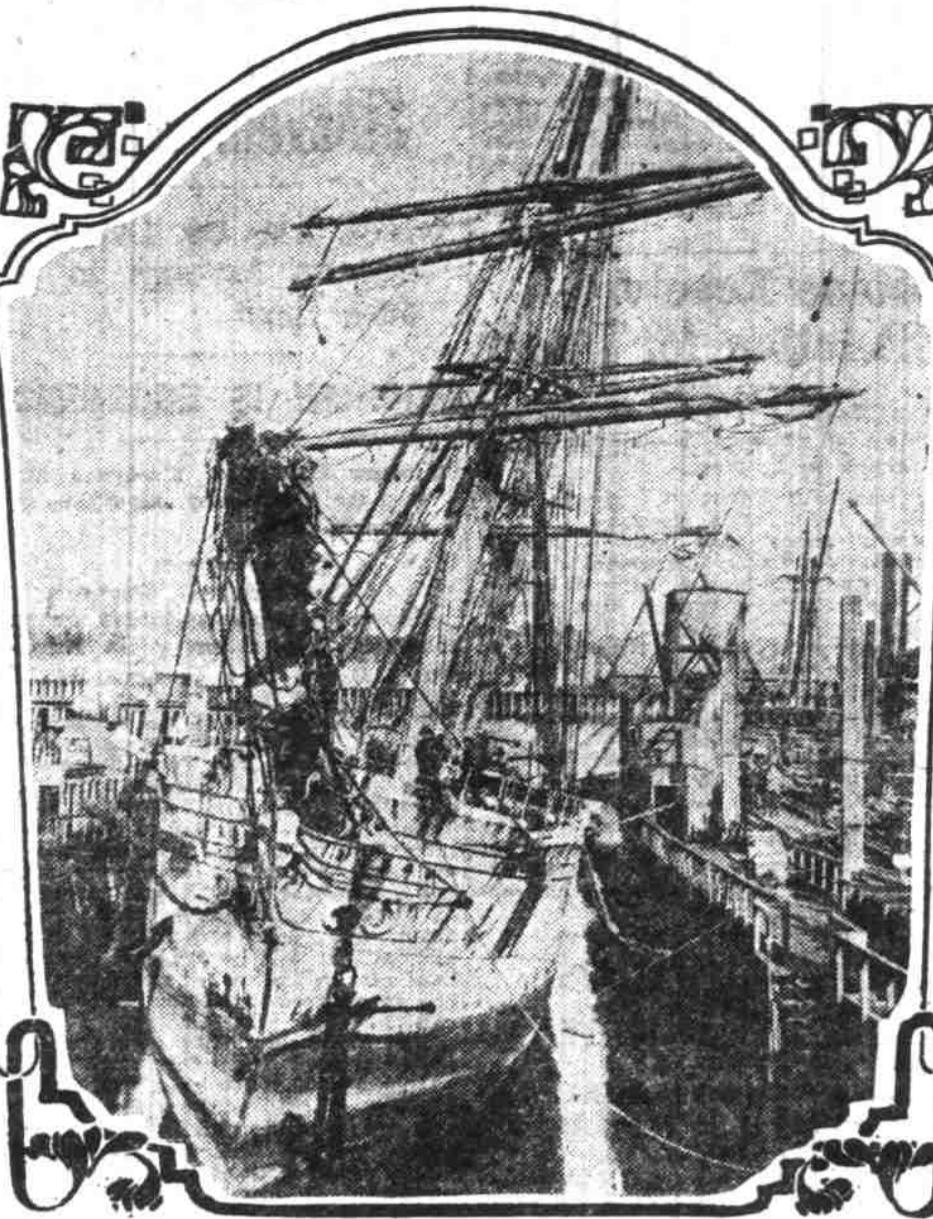
According to steamers arriving from the Panama Canal the new government wireless plant at Darien is practically complete and messages are being handled from as distant places as San Francisco and Arlington, Va. The plant will, it is expected, prove of great benefit to the government in case of trouble and is already proving its worth as a commercial asset.

FEW SHIPS AT EUREKA, CAL.

Only One Vessel Crossed Humboldt Bar Yesterday.

Eureka, Cal., Feb. 20.—But one vessel crossed Humboldt bar today, this

BARK NEARLY CAPSIZES



Norwegian bark Morna on Oregon drydock.

The Norwegian bark Morna was cleaned of all ballast or cargo for the first time in her history at Linton last week and when she was first placed in the Oregon drydock carriage within an ace of turning over on her side. As she first became a strain on the keel blocks they slipped from under her and she started to list to port.

The pumps in the drydock were stopped at once and the vessel was let into the water again without damage.

The Morna is an old type, sharp bottom vessel, having been built in 1877 at Birkenhead, Scotland, by Laird Bros. She is being fitted out with a new deck in addition to being scraped and painted.

GRAIN TONNAGE EN ROUTE AND LISTED FOR PORTLAND

Table with columns: Name, Flag and Rig, Tons, From, Sailed, Memo.

Miscellaneous to Arrive in Portland.

Table with columns: Name, Flag and Rig, Tons, From, Sailed, Memo.

Panama Canal Service.

Table with columns: Name, Flag and Rig, Tons, From, Sailed, Memo.

West Coast Service.

Table with columns: Name, Flag and Rig, Tons, From, Sailed, Memo.

European Service.

Table with columns: Name, Flag and Rig, Tons, From, Sailed, Memo.

SETS SAIL FROM ASTORIA

Steamer Shasta Leaves Out for San Francisco.

Astoria, Or., Feb. 20.—The steamer Shasta sailed last evening for San Francisco with lumber from Aberdeen, Westport and Rainier.

The steamer Klamath arrived during the night from San Francisco with general cargo for Astoria and Portland.

The steamer Shoshone sailed today for San Pedro with a cargo of lumber from Knappa.

The American physician and surgeon, Dr. J. W. Sullivan, who sailed today for Puget sound, where she will discharge part cargo from New York.

The Grace line steamer Santa Cruz is due this evening from New York via the Panama Canal with part cargo. Outward bound, the steamer will dock at the Sanborn wharf and load 850 tons of canned salmon for New York. She will also load 250 tons of flour at the Astoria mill, to be shipped at New York.

The British ship Wiscombe Park, grain-laden for the United Kingdom, was towed to sea this afternoon.

TUG BOAT SERVICE IN A TIE

Each Outfit Has Secured Fifteen Sailing Vessels.

Through having taken in tow the French barks Touraine and Francois yesterday afternoon the Port of Portland tugs are in a deadlock with the tugs of the Puget Sound Turboat outfit.

NEWS OF THE PORT

Arrivals, February 20. Klamath, American steamer, Captain Mason, freight from San Francisco, docked.

Departures, February 20. Beaver, steamer, Captain Mason, passengers and freight, San Francisco and Los Angeles, S. F. & P. S. S. Co.

Marine Almanac. Weather at River's Mouth. North Head, Feb. 20.—Condition of the mouth of the river at 10 a. m. southeast, southwest, 15 miles; weather, cloudy and raining.

Suns and Tides February 20. Sun rises, 7:02 a. m. Sun sets, 5:47 p. m. High water, 1.38 p. m. Low water, 5:58 a. m., 7:10 p. m., 1:34 p. m., 1.5 feet.

Daily River Readings.

Table with columns: STATIONS, Stage, Flood, Ebb, Memo.

River Forecast. The Williamson at Portland will remain nearly stationary for the next two or three days.

Steamships to Arrive. Beaver, steamer, S. F. & P. S. S. Co., Mar. 3.

Steamers Due to Depart. Name, Flag and Rig, Date.

Vessels in Port. Name, Flag and Rig, Tons, From, Sailed, Memo.

At Neighboring Ports. Astoria, Feb. 20.—Sailed at 4:30 a. m. for San Francisco.

At Neighboring Ports. Astoria, Feb. 20.—Sailed at 4:30 a. m. for San Francisco.

At Neighboring Ports. Astoria, Feb. 20.—Sailed at 4:30 a. m. for San Francisco.

At Neighboring Ports. Astoria, Feb. 20.—Sailed at 4:30 a. m. for San Francisco.

At Neighboring Ports. Astoria, Feb. 20.—Sailed at 4:30 a. m. for San Francisco.

At Neighboring Ports. Astoria, Feb. 20.—Sailed at 4:30 a. m. for San Francisco.

At Neighboring Ports. Astoria, Feb. 20.—Sailed at 4:30 a. m. for San Francisco.

At Neighboring Ports. Astoria, Feb. 20.—Sailed at 4:30 a. m. for San Francisco.

At Neighboring Ports. Astoria, Feb. 20.—Sailed at 4:30 a. m. for San Francisco.

At Neighboring Ports. Astoria, Feb. 20.—Sailed at 4:30 a. m. for San Francisco.

At Neighboring Ports. Astoria, Feb. 20.—Sailed at 4:30 a. m. for San Francisco.

At Neighboring Ports. Astoria, Feb. 20.—Sailed at 4:30 a. m. for San Francisco.

At Neighboring Ports. Astoria, Feb. 20.—Sailed at 4:30 a. m. for San Francisco.

At Neighboring Ports. Astoria, Feb. 20.—Sailed at 4:30 a. m. for San Francisco.

At Neighboring Ports. Astoria, Feb. 20.—Sailed at 4:30 a. m. for San Francisco.

At Neighboring Ports. Astoria, Feb. 20.—Sailed at 4:30 a. m. for San Francisco.

At Neighboring Ports. Astoria, Feb. 20.—Sailed at 4:30 a. m. for San Francisco.

At Neighboring Ports. Astoria, Feb. 20.—Sailed at 4:30 a. m. for San Francisco.

At Neighboring Ports. Astoria, Feb. 20.—Sailed at 4:30 a. m. for San Francisco.

At Neighboring Ports. Astoria, Feb. 20.—Sailed at 4:30 a. m. for San Francisco.

At Neighboring Ports. Astoria, Feb. 20.—Sailed at 4:30 a. m. for San Francisco.

At Neighboring Ports. Astoria, Feb. 20.—Sailed at 4:30 a. m. for San Francisco.

At Neighboring Ports. Astoria, Feb. 20.—Sailed at 4:30 a. m. for San Francisco.

At Neighboring Ports. Astoria, Feb. 20.—Sailed at 4:30 a. m. for San Francisco.

At Neighboring Ports. Astoria, Feb. 20.—Sailed at 4:30 a. m. for San Francisco.

At Neighboring Ports. Astoria, Feb. 20.—Sailed at 4:30 a. m. for San Francisco.

At Neighboring Ports. Astoria, Feb. 20.—Sailed at 4:30 a. m. for San Francisco.

At Neighboring Ports. Astoria, Feb. 20.—Sailed at 4:30 a. m. for San Francisco.

At Neighboring Ports. Astoria, Feb. 20.—Sailed at 4:30 a. m. for San Francisco.

At Neighboring Ports. Astoria, Feb. 20.—Sailed at 4:30 a. m. for San Francisco.

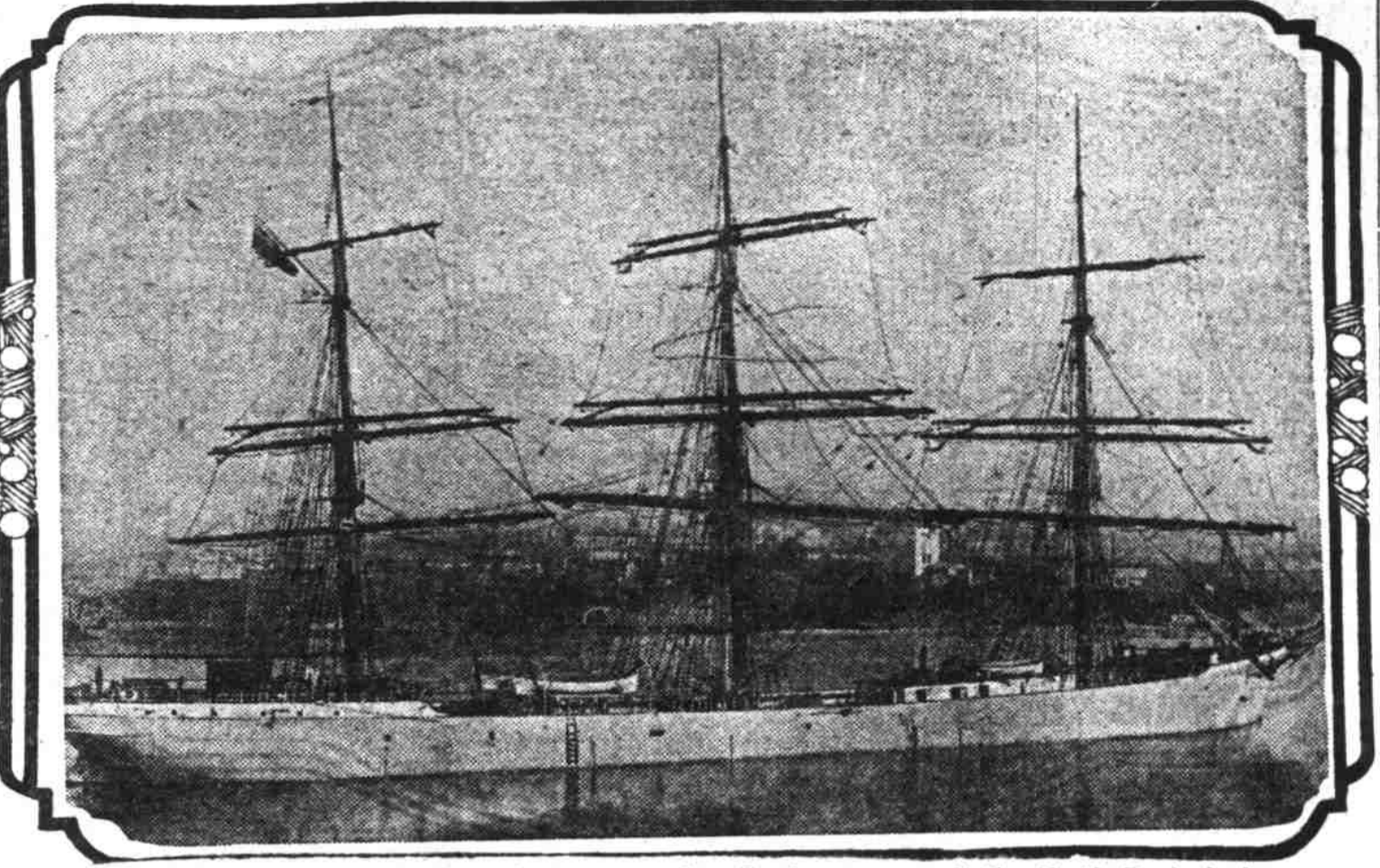
At Neighboring Ports. Astoria, Feb. 20.—Sailed at 4:30 a. m. for San Francisco.

At Neighboring Ports. Astoria, Feb. 20.—Sailed at 4:30 a. m. for San Francisco.

At Neighboring Ports. Astoria, Feb. 20.—Sailed at 4:30 a. m. for San Francisco.

At Neighboring Ports. Astoria, Feb. 20.—Sailed at 4:30 a. m. for San Francisco.

PORTLAND SHIPS GIVEN QUICK DISPATCH



British ship Wiscombe Park, swinging at anchor in the stream off the North Bank dock.

Portland stevedores have given a splendid exhibition of the manner in which ships can be dispatched from this port when haste is necessary and this season's record for lay days in the grain fleet is expected to be the best the port of Portland has ever had.

The British ship Wiscombe Park was picked up off the river January 31 by one of the tugboats and was ready for sea yesterday was ready for sea. She carries a capacity cargo of wheat.

The reason for the speed shown has been that of the tugs, due to the destruction by fire of Columbia No. 2, Montgomery No. 1 and Oceanic docks Irving, North Bank, Montgomery, the elevator, Alvin, the Portland Flouring Mills and the Globe elevators have been forced to bear the burden of cargo for the tugs already dispatched and the 25 or more enroute here to load.

Marine Notes From All Parts of the Globe

United States Coast Guard service in the line of saving lives, branch of the department of commerce. Pensions for retired officers and crew members of the United States bureau of navigation as newly constructed vessels.

No trace has been found of the crew of the abandoned schooner Frank Swain, found bottom up 73 northeast of Cape Henry. The vessel still contains a large quantity of cargo.

Three foreign built steamers were admitted to American registry last week, making a total of 12 vessels totaling 45,000 net tons, to come under the protection of the coast and customs since the shipping bill passed. The three were the steamers Maud, Suruga and Antilla.

On board the steamer General Hubbard were 200 tons of California grown rice for export to the Orient. The rice was shipped eastward out of California and more than 100 tons of it was lost in the Gulf of Mexico.

It is reported that the Great Northern steamer, which was captured by the British in the North Sea, has been released. The vessel is now being towed to the United States.

HUMORIST AND POET LIKES PORTLAND AND WANTS RETURN IN FALL

Edmund Vance Cooke, of Cleveland, Ohio, Here on Short Visit.

Edmund Vance Cooke, humorist and poet, here on a brief visit to Portland. He is a humorist, poet and philosopher, author and lecturer, is in Portland for a brief visit en route from Los Angeles to his home in Cleveland, Ohio.

For 20 years he has been making the world a better place to live in with his logic and his laughter. A dozen books have come from his pen ranging in theme from the chronicles of the "Law of the Land" to "The Uncommon Man."

"I wish I could spend a week here. Possibly I can arrange to give a series of talks to the school children next fall. I like to show the children that literature is not a dry and dusty study. I want them to know that literature is a vital character-forming force in their lives."

With "Credo" on the front door mat, Our Heaven was once an upper flat, Wherein the saints serenely sat, Each with a halo for a hat.

Each sang his bliss without alloy, Each joyed the most exalted joy, Knowing the engine-room was jammed With legends of the suffering damned.

Such heaven was. What heaven is now? Heaven's only knows, but anyhow We may not criticize, because Earth still is run as heaven was.

Heaven's an effect, and not a cause, And subject to the eternal laws, The higher the field and the lower, Was, is and shall be evermore.

The primary pupil's simple knowledge Is the foundation of the college; So, to make heaven of higher worth, God will let's make a better Earth.

BARKS RECEIVE A HANDSOME PRICE IN DELIVERY TO EUROPE

Sum of \$50,000 to Be Paid for Lumber Voyage to the British Islands.

MOYUNE IS AT SEATTLE

French Bark Admiral Courbet, Loading Cargo of Wheat in West Seattle for the United Kingdom.

Seattle, Wash., Feb. 20.—Significant movement, the big four mast steel bark, William T. Lewis, now loading at Hereford, will receive \$50,000 for carrying to Great Britain a lumber cargo with a Prigot sound value of approximately \$25,000.

British Blue Funnel line steamer Moyune, Captain A. E. Griswold, arrived this afternoon on the inaugural voyage of the corporation's new Liverpool-Seattle service via the Panama canal. On her voyage to Seattle, the Moyune stopped at Victoria and Vancouver to discharge shipments loaded for those ports.

The French bark Admiral Courbet, which recently completed discharging cargo from Europe in Seattle and Tacoma, is loading wheat for the United Kingdom at the Houser elevator in West Seattle.

Contractors Gather Here to Submit Bids. Construction of Interstate Bridge Will Be Divided into 12 Separate Sections.

Contractors from all parts of the United States are arriving in Portland to submit bids on the construction of the Interstate bridge between Oregon and Washington. The bids are to be received at the courthouse at 2 o'clock Tuesday.

In order to give contractors in every line of construction work and of every size an opportunity to bid, specifications have been so arranged that bids may be submitted in whole or in part. The construction has been divided into 12 separate sections such as grading, building embankments and the like.

An idea of the work necessary to prepare specifications for bidders may be gained from the fact that the 4000 separate sheets of blue prints are to be laid in a row three feet apart, the whole length of the proposed bridge, about three miles.

E. E. Howard, chief engineer in charge of construction, estimates that 10,000 tons of steel will be used, making one of the largest individual orders given in the past two years.

Each section of the bridge to be purchased in the east, and as the Panama canal is now open it is believed a saving of about \$40,000 can be made in transportation charges by shipping by water.

Prohibition Issue Deemed Important. Patrons of Husbandry Should Pay Special Xmas to Question, It is Urged.

Milwaukee, Or., Feb. 20.—General sentiment at the regular monthly meeting of Milwaukee, Feb. 20, seemed to consider "prohibition," suggested by Mrs. J. A. S. Kasto, as the public question which should demand the special attention of the members of the organization at this time.

A special meeting of the grange will be held at St. Agatha's church, Sellwood, Feb. 20, for the initiation of two candidates in the first and second degrees and the reinstatement of a former member.

The grange at its last closed session adopted resolutions of regret on the recent death of one of its members, C. H. Danby, at the age of 70 years.

On the evening of March 5, after a short closed session, a penny social will be held by the grange, with an admittance charge of one cent for every two feet or fraction thereof in height. The charges at all booths, games and refreshments will be one cent.

Spiitulski Case Postponed. Habeas corpus proceedings brought by Mrs. Anna Spiitulski, to secure the release of her 15-year-old son held in the county jail under a writ of habeas corpus, were postponed yesterday by Circuit Judge McGinn, who ordered that the case be held over until the next day.

Society Leader Killed. Boston, Mass., Feb. 20.—Mrs. Nelson Curtis of Jamaica Plains, one of Boston's society leaders, was fatally hurt when her automobile, in which she was being driven to a matinee, was struck by a trolley car on Commonwealth avenue this afternoon. She died in the Boston City hospital.

Grocery Store Robbed. Burglars entered the grocery store at 2152 East Yamhill street, at the end of the Mount Tabor car line Friday night. Eight 50 pound sacks of flour and a 100 pound sack of sugar were stolen.

Enjoyed Elevator Rides. Henry Lancaster did not relish yesterday a 30-day vagrancy sentence imposed by District Judge Jones, but he did enjoy the elevator ride. Lancaster has experienced on elevators the court house. They were his first elevator rides. He lives near Gresham and pleaded guilty to the charge, Special Agent W. P. Lillis brought the charge against him, alleging that Lancaster stole 200 pounds of high tension aluminum wire from the Northwestern Electric company. Sentence was later suspended when it was learned Lancaster had an opportunity to cut and haul wood.

Enjoyed Elevator Rides. Henry Lancaster did not relish yesterday a 30-day vagrancy sentence imposed by District Judge Jones, but he did enjoy the elevator ride. Lancaster has experienced on elevators the court house. They were his first elevator rides. He lives near Gresham and pleaded guilty to the charge, Special Agent W. P. Lillis brought the charge against him, alleging that Lancaster stole 200 pounds of high tension aluminum wire from the Northwestern Electric company. Sentence was later suspended when it was learned Lancaster had an opportunity to cut and haul wood.

Alberta Woman's Club. The Alberta Woman's Improvement club will meet Tuesday evening at the residence of Mrs. Josephine H. Sharp, 1032 East Twenty-fourth street north. Tenting on "Vacant Lots" and local interests will be discussed by speakers and ladies interested in bettering conditions are invited.