

DRIFTING ICE TIES UP RIVER STEAMBOATS AT VARIOUS POINTS

Prospects Are That Upper Columbia Will Be Blocked Soon.

TRIBUTARIES NEAR SIO

Cascade Locks Are Closed and Navigation Is Interrupted—Steamer Locked in Ice.

Ten river steamers are tied up either in Portland or at cities on the Columbia and its tributaries as a result of the ice running in that river. Service to all up-river, and Lewis river points has been completely stopped, while steamers are going no further up the Cowlitz river than Kelso, the steamer Chester being tied up there.

With the cold weather continuing, there is little prospect that the ice will disperse soon. Reports from The Dalles and Snake river cities are to the effect that ice is forming in large quantities. The temperature at Lewiston Friday night was about the zero mark, and with ice from the Snake and Clearwater running into the Columbia, the danger to boats will be increased.

Cascade locks are shut tight now because of jammed ice and lack of power from the head gates in the creek nearby. All the Portland steamers and the steamer, which sank near the City rock after striking, were gotten through before the tie up and are at their local wharves. The steamer Lacrosse, of the Wind River and Woodland and La Center, is still reported locked in the ice at the mouth of Wind river.

The Portland Railway Light & Power company last night pulled the ferry boat City of Vancouver off the run and replaced her with the steamer Jessie Harkins, a propeller boat with her hull sheathed with metal. She will run as long as possible but should the ice flow become too strong she will also be taken off.

Two Lewis river steamers, the Woodland and La Center, are tied up in the ice in the upper Lewis river. Both are stuck fast and will likely be forced to stay there for several days.

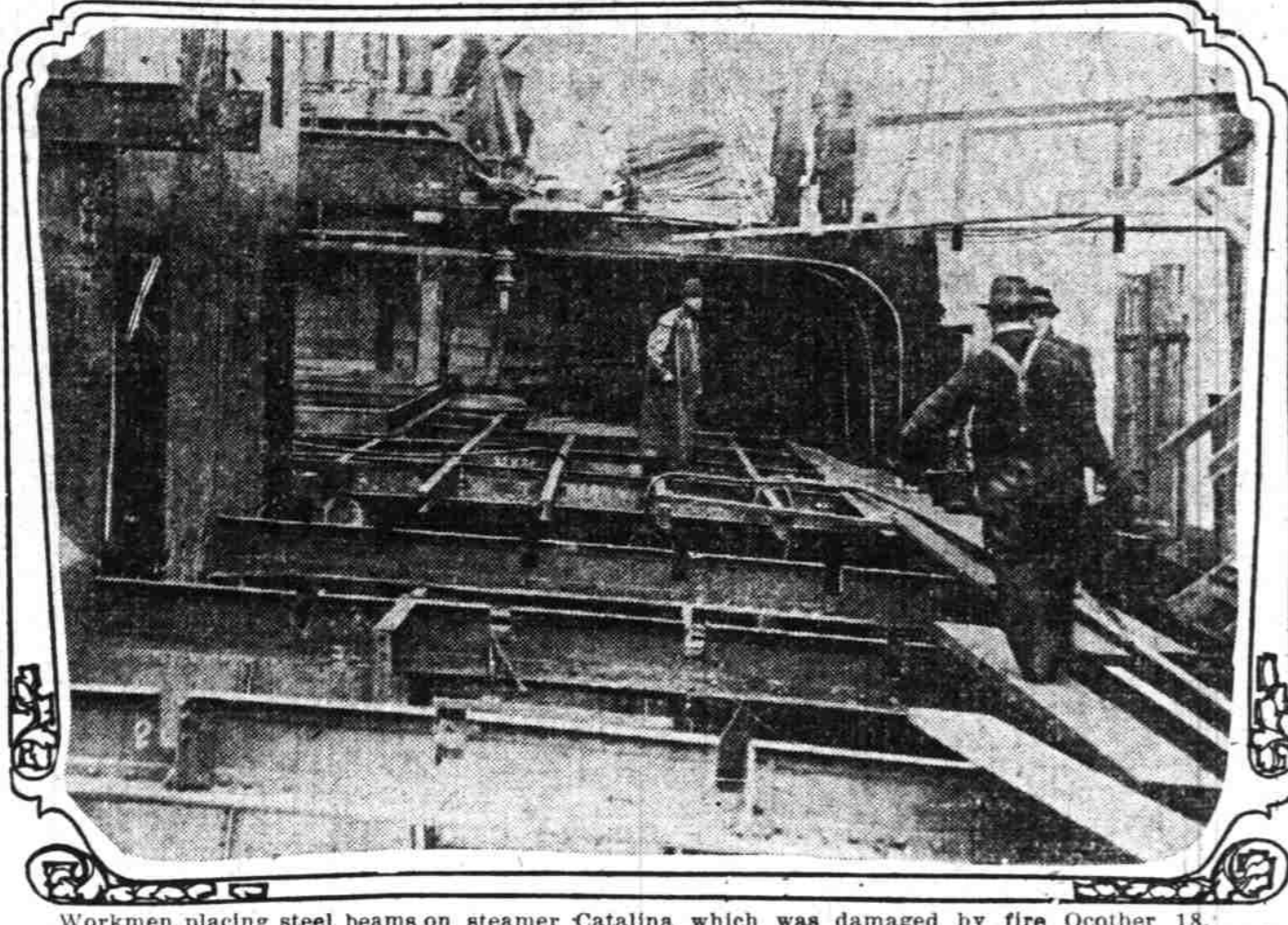
Here in Portland the steamers Tacoma, Dalles City and State of Washington are off the run to The Dalles; the Shaver towboats have been ordered up after the run ended, the steamer Beaver takes Willamette through route between the mouth of the Willamette river and St. Helens, while the steamer, which sank near the City rock, is expected tomorrow. The steamer Harvest Queen was late getting in from Astoria, as it was forced to run under a low head in the upper Lewis river. The Lurline, Ione and other towboats are operating under difficulties and will likely be pulled off should the conditions become worse.

LOADING RECORD IS GOOD

Steamer St. Helens Takes on Big Cargo.

By fast work the steamer St. Helens was loaded with 850,000 feet of lumber in 14 hours at Linton Fri-

RAPID PROGRESS MADE WITH REPAIRS



Workmen placing steel beams on steamer Catalina which was damaged by fire October 18.

Modern machinery and 300 men are making rapid progress with the job of repairing the damaged steamer Catalina. The work was started on October 18, and judging from present appearances, she will be ready on contract time. All the tearing down has been finished and new material is being placed in her hull. She will likely be ready for drydocking next week at the Willamette Iron & Steel Works, which has the contract for the work, has made arrangements to dock the steamer in the Port of Portland.

drydock. Workmen are now placing the new deck beams which were made necessary through the warping and weakening of the original ones. Donald Matheson, managing engineer of the Grace interests, is supervising the work.

At 11:50 by the Vanguard and F. A. Kilburn. The Acme, out at 3:15 this afternoon, completed the business for the day, there being no vessels arriving. The Pacific coast steamer City of Topeka is due tomorrow with passengers, mail and freight.

LICENSES ARE SUSPENDED

Captains Punished for Speeding During Foggy Weather.

San Francisco, Cal., Dec. 19.—For the third time within a week James Guthrie and Joseph P. Dolan, United States inspectors of steamships, have inflicted a penalty upon navigators for speeding their commands during foggy weather. Today the licenses of Captain Oscar Fredericksen, of the steamer Acma, and Captain B. W. O'Brien, of the Manoa, were suspended for 15 and 30 days respectively.

Friday the certificate of Captain Henry F. Wooden, of the Manoa, was suspended for 30 days for a similar offense, and one week ago Captain James Carey, of the Hanalei, was suspended for two years.

October 26, the Adeline Smith and Svea colided off Cape Blanco during a dense fog. At the investigation it developed that both skippers had exceeded the speed limit under the regulations during a fog.

The old whaling schooner Bowhead was damaged by the United States marshal today to Mrs. Esther Leifholt for \$1375. It is not known if the purchaser intends to operate the vessel herself or again dispose of it to others. This craft cruised in a number of interesting buried treasure tales about a year ago when Oakland and San Francisco parties took it over to the United States for promoting an expedition to the South Pole.

The affair ended with promotion only, and it is believed that the sale of the vessel means that the treasure hunt will be abandoned.

REACHES PORT TOWNSEND

British Tank Steamer Eburna Is Reported In.

Townsend, Wash., Dec. 19.—The British tank steamer Eburna is reported in at Richmond beach. The 2000-ton steamer Eburna had nearly 2000 tons left in her hold which she will discharge at San Francisco, she clearing here at 10:15 a. m.

Princess Margaret Just Launched on the Clyde.

Seattle, Wash., Dec. 19.—Officials of the Canadian Pacific Railway company today announced that the steamer Princess Margaret, just launched on the Clyde for service between Seattle, Victoria and Vancouver, will leave for this coast early in January.

SEATTLE'S NEW PIER FORMALLY OPENED; BIG STEAMER DOCKED

Vessel Will Take on 2,000,000 Feet of Lumber and Shingles for New York.

Three Rafts of Cedar Contain 1,500,000 Feet and Are Delivered at Ballard Plant.

Seattle, Wash., Dec. 19.—The Seattle port commission's new \$1,000,000 Smith Cove pier was formally opened this morning when the 2490-ton steamer Evelyn of the Luckenbach Steamship company docked and loaded a small shipment of lumber and three carloads of shingles. The lumber and shingles came from Snohomish mills. The Evelyn shifted from the dock at noon to continue loading at other piers. Altogether she will take on about 2,000,000 feet of lumber and shingles for New York, handling the cargo for the Robert Dollar company.

The Nordby Fisheries company today filed in the federal court an objection to the sale at auction by the government yesterday of the steamer Ruseh. The objection is made on the ground that the steamer was sold for \$525 when it was declared to be worth \$1000.

The labels against the vessel amount to \$21,000, of which the Nordby Fisheries company claims part.

The mother naval ship for submarine construction and dry dock company's plant. It is named the Bushnell and will be finished April 1. It will be built as a tender for submarine boats and will carry all the equipment and supplies which will be needed by the diving craft which it conveys.

The Bushnell will be 265 feet long, costing approximately \$1,000,000.

draged channel; daymark to be established. A black square mark numbered "7" name changed to north buoy. The name of the channel is changed to "Pugnet Sound." Robinson Point light station—Fog signal to be temporarily out of service until December 31, 1914. Fog signal to be replaced by bell tower. Bell tower to be replaced by bell tower. Bell tower to be replaced by bell tower.

NEWS OF THE PORT

Departures, December 19. Yellowstone, Am. str., Capt. Pagenstrom, freight for Coos Bay and San Francisco; Arrow Line.

Marine Almanac. Weather at River's Mouth. North Head, Dec. 19.—Condition of the mouth of the river, 10 a. m. smooth; wind northeast 6 miles; weather, clear.

Daily River Readings. STATIONS. Lewiston, 24 0.9 -0.6-0.0; Emallisa, 20 2.2 -0.0-0.0; Albany, 20 2.2 -0.0-0.0; Salmon, 20 1.5 -0.2-0.0; Portland, 15 3.5 -0.3-0.0.

River Forecast. The Willamette river at Portland will remain nearly stationary for the next two or three days.

Steamships to Arrive. PASSENGERS AND FREIGHT. Yakatan, Am. str., Dec. 20; Rose City, S. F. and way, Dec. 23; Beaver, S. F. and way, Dec. 23.

LEGAL INTELLIGENCE

Saturday's Developments in the Courts. United States District Court. Documents Filed. Watsworth Howland & Co. vs. Fisher, Thorpe & Co.; injunction.

Judgments Entered. Joe Zeke vs. Oregon Lumber company; damages awarded.

Circuit Court. Kate H. Daffern vs. R. D. Swank; Mechanics Insurance Co.; reformation of policy and collection of insurance.

U. S. Inspectors Will Investigate Charges

Passengers on Steamer Stranger Alleged That Officers Were Drunk When Vessel Hit Obstruction.

Investigation into the charges preferred by Frank T. Hume and three other passengers on the steamer Stranger when she struck Dalles City rock Friday afternoon and sank, that Captain Archie Geer and other officers and deck hands of the steamer Stranger, with the exception of the chief engineer, were drunk, will be made by United States inspectors of Hulls and Boilers Edwardson and Fuller.

In his report on the steamer Stranger, Hume stated that the members of the crew will likely be back in Portland by tomorrow when a date for the hearing will be set.

After the vessel struck and was beached, Hume says, the passengers launched the lifeboats themselves and rowed the boats a quarter of a mile to a point where they could land.

Local river men are at a loss to understand the charges against Captain Geer, as he has been running the boats on the river for years and has always borne an excellent reputation. He owns the steamer Stranger and has used her in a free lance trade supplying for other steamers and carrying powder and combustibles for several years.

At Neighboring Ports. Astoria, Dec. 19.—Am. str. Klamath, for San Francisco; Willamette, for San Pedro via San Francisco. Sailed at 11:30 a. m.

San Francisco, Cal., Dec. 19.—Arrived: Am. str. Santa Lucia, Bay port, 12:45 a. m.; Shoshone, San Pedro, at 6:10 a. m.; Nevada, Portland, at 7:15 a. m.; Gaviota, S. M., Harvard, San Pedro, 8:50 a. m.; Admiral Dewey, Seattle, 9:35 a. m.; Newport, Balboa, Portland, 10:12 a. m.; Ventura, with large 91 in tow, 10 a. m.; Lone Star, Seattle, 10 a. m.; Delta, San Pedro, 10:20 a. m.; Delta, San Pedro, 11:40 a. m.; Am. str. Bear, Portland, 10:40 p. m.; Bruna, Br. str. Hongkong, 10:20 a. m.; Am. str. Washburn, Port San Luis, 10:30 a. m.; Am. str. Santa Lucia, Bay port, 11:10 a. m.; M. Segundo, M. Segundo, 11:20 a. m.; Am. str. Victoria, Puget Sound port, 12:20 p. m.; Multnomah, Astoria and Portland, 12:20 p. m.; W. H. Williams, 1:45 p. m.; Jap. str. Tenyo Maru, Hongkong via Honolulu and Yokohama, 1:45 p. m.; Jap. str. Kuremaru, 2:00 p. m.; Jap. str. Gondo, 2:00 p. m.; Jap. str. North Star, 2:30 p. m.; Jap. str. Tura via ports, 5:30 p. m.; Shoshone, Gray's Point, 5:30 p. m.; Am. str. Fort Bragg, Cal., Dec. 19.—Arrived, 7 a. m.; Am. str. Higgins, from San Francisco, 7:30 a. m.; Am. str. Coos Bay, wrecked at 8:30 a. m. when towing party dived; Am. str. Coos Bay, wrecked at 8:30 a. m. when towing party dived; Am. str. Coos Bay, wrecked at 8:30 a. m. when towing party dived.

Germans Massing Men Near Lembourg

Movement Presumably Designed to Give Tientsin Control of Territory Contiguous to Holland.

The Hague, Dec. 19.—A Maertricht dispatch says that during the last two weeks a vast concentration has been effected by the Germans on both sides of the province of Lembourg, the narrow tongue of Dutch territory extending between Belgium and Rhentish Prussia.

The movement is presumably designed to enable Germany to control access to this section of Holland, also to give Germany command of the situation should later developments make the district the scene of military operations.

To Publish Lectures. The Oregon Civic League is to have published in book form the lectures delivered by Dr. C. H. Chapman recently in the library. The lectures were on "The New Literature," "The New Political," "The New Government," "The New Internationalism," "The New Religion," and "The New World."

AUCTIONS

Auction Sales Geo. Baker & Co. ESTABLISHED 1892. ON TUESDAY NEXT

We have the fine furnishings of a private home. Also we shall sell a collection of imported grapes, and baskets of fruit, including apples, pears, large easy rockers, and library tables, daynort, parlor desks, upright pianos, heavy antique MAJESTIC CHIFFONIER, a quarter sawed oak dining room suite, table linen, silverware, glassware, hand-crocheted table covers, a large oil landscape oil paintings, pictures, mirrors, brass and iron beds, best quality and mattress, pillows, bed-clothing, dressers and chiffoniers, drop-head sewing machine, hand-carved hall chairs, music cabinet, gas range, steel range, and many other useful lots.

ALSO WE SHALL SELL GENUINE EAST INDIA ART GOODS. ANTIQUE PERSIAN VASES. Comprising engraved brass bouquet-holders, Bohemian cups, fine antique flower vases, brass trays, jardiniere, plaques, Cashmere Valley fur rugs, Alton, and many other rare and valuable articles which have been direct importation from Bombay, India. The metal used in the highest value and which is of the highest quality. We have been informed by the importer that there are no duplicates in the United States which makes this especially valuable as heirlooms and family relics.

THESE VALUABLE GOODS AS WELL AS THE FURNITURE WILL BE ON EXHIBITION TOMORROW AT OUR SALESROOM, 166-168 PARK STREET. AUCTION ON TUESDAY NEXT AT 10 O'CLOCK.

ON THURSDAY NEXT We shall have the furniture, rugs, etc., from East Side home, including fine and valuable library furniture, etc. Auction on Thursday next at 10 o'clock.

AUCTIONS

Give Good Gifts BELL THE AUCTION CO. AND COMMISSION. 191 SECOND ST.

Christmas week is a busy time for all of us. Our store is the center of the order of useful S. F. U. G. S. (Society for Promotion of Useful Gifts). Better come in and see the fine line of beautiful and necessary furniture and furnishings we have on display this week. The cold snap renders the procuring of good stoves a necessity, so our special this week will be:

STOVES AND RANGES Heaters for coal or wood, with some good combination stoves, all kinds and sizes, in good condition and fully guaranteed by us. Our customers are getting \$10, \$15, \$17.50 and \$20. Come early while the stock is full.

GIFT SUGGESTIONS Electric Irons, 60 lbs. with stand, all new stock and guaranteed forever, only \$2.50. A few left. Rockers, \$1.25 to \$4. Morris chairs, \$4.50. Round pedestal stand table, solid oak, \$47.50. Statues, large line. \$5 to \$10. Dining tables, \$7 to \$10. Kitchen cabinet, glass doors, \$8. Many other useful gifts. Look them over.

OUR GUARANTEE We guarantee all goods to be as represented or money back. Very few goods are returned, but when they are we cheerfully exchange them or return the money. Our customers are our friends. We serve them, why not you?

Bell Auction Co. 191 SECOND ST. We Sell at Private Sale Several Good Upright Pianos. And a Large Assortment of Office Furnishings. Including roll-top, flap-top, standing and typewriter desks, office chairs, tables, filing cabinets, etc. We shall consider it a pleasure to show you what we have to offer.

Monday, Wednesday and Friday. EACH DAY AT 10 A. M. We hold three sales each week at our salesroom for all kinds of medium grade furniture, carpets, rugs, stoves, dishes, bedding, etc. Parties looking for a bargain should especially save money by attending our auctions.

High-Grade Furniture the best the market affords, and equal to new, we have the largest assortment in the city at a PATENT MALLEABLE and other celebrated makes of steel ranges; gas ranges of all descriptions. Wilson's Auction House. 166-168 Park Street.

Monday, Wednesday and Friday. EACH DAY AT 10 A. M. The Store That Sells for Less. We sell Groceries, Dry Goods, BEANS, SPICES, FATS, OILS, CIGARS, TOBACCOS, in fact, anything you eat or use, much less than the regular price. Come in and satisfy yourself. J. T. WILSON, PROPRIETOR.