

VALUABLE CARGOES TO LEAVE TODAY BOUND FOR EUROPEAN PORTS. Flour and Wheat Form Important Parts of Shipments Worth About \$750,000.

TO LOAD CARGO OF GRAIN. Norwegian Ship Falls of Atton to Be Moved From Ballast Dock to Irvington Dock.

Three valuable cargoes, destined eventually for European ports, will leave Portland today, making by far the best day for the local custom house as it shows a number of times when four heavy cargoes were dispatched. The total value of the cargoes is in the neighborhood of \$750,000.

The British steamer St. Hugo did not get away as scheduled yesterday afternoon, but will surely clear today, as she is ready and waiting. She, too, goes to the United Kingdom and is cleared by Balfour, Guthrie & Co. Her cargo should reach the \$300,000 mark also.

Alaska Liners Withdrawn During the Winter Months. That the Portland Steamship company with its three steamers will be unable to care for the business to be available next summer is the belief of C. S. Lindsay, agent for the company at Juneau, who arrived in Portland from Alaska last night.

Will Resume in the Spring. The Portland Steamship company with its three steamers will be unable to care for the business to be available next summer is the belief of C. S. Lindsay, agent for the company at Juneau, who arrived in Portland from Alaska last night.

Preparations for the resumption of business in the spring are to go ahead without interruption. New steamers, purchased if possible, are to be arranged for winter conditions commencing wherever possible.

Portland Couple Will Take Trip East by Way of Canal Route. San Francisco, Nov. 21.—Congressman William Kent of California and Walter Wade and wife of Portland will be among the passengers on the American-Hawaiian steamer Honolulu, which sails at 10 a. m. tomorrow for New York via the Panama canal.

Will Drag For Anchors. The American steamer Camino which will be the Belgian relief ship, arrived today with her flags at half mast by reason of the death, November 6, at Colon, of her third engineer, H. D. Lindley, who succumbed to heart failure. Two army deserters who stowed away at Panama were turned over to the military authorities here.

Mud Hooks Lost by French Bark May Be Recovered. Port of Portland tugs will drag for the anchors and chains of the French bark Pierre Antonine near Desdemona light house this morning and if they are found ready will be placed aboard her and she will leave on tomorrow night. The ships' gear was lost in attempting to anchor after being brought in by the tugboat Onocota.

Marine Almanac. Weather at River's Mouth. North Head, Nov. 21.—Condition at the mouth of the river at 8 a. m. smooth; wind east, 20 miles; weather, cloudy.

Daily River Readings. STATIONS. Lewiston, 24 3.7 0.00.00. Umatilla, 25 5.0 0.40.00. Hood River, 26 2.9 0.10.00. Albany, 20 2.9 0.10.00. Salem, 20 2.8 0.80.00. Willamette, 20 2.8 0.80.00. Portland, 15 4.0 0.40.00.

Steamships to Arrive. PASSENGERS AND FREIGHT. Panama, Am. S. F. and way, Nov. 21. Beaver, S. F. and way, Nov. 22. Rose City, S. F. and way, Nov. 22. Onimani, Alaska, Nov. 22. Louisa, S. F. and way, Nov. 22. Louisa, S. F. and way, Nov. 22. Louisa, S. F. and way, Nov. 22.

Steamers Due to Depart. PASSENGERS AND FREIGHT. Panama, Am. S. F. and way, Nov. 21. Beaver, S. F. and way, Nov. 22. Rose City, S. F. and way, Nov. 22. Onimani, Alaska, Nov. 22. Louisa, S. F. and way, Nov. 22. Louisa, S. F. and way, Nov. 22.

Steamships to Arrive. PASSENGERS AND FREIGHT. Panama, Am. S. F. and way, Nov. 21. Beaver, S. F. and way, Nov. 22. Rose City, S. F. and way, Nov. 22. Onimani, Alaska, Nov. 22. Louisa, S. F. and way, Nov. 22. Louisa, S. F. and way, Nov. 22.

Steamers Due to Depart. PASSENGERS AND FREIGHT. Panama, Am. S. F. and way, Nov. 21. Beaver, S. F. and way, Nov. 22. Rose City, S. F. and way, Nov. 22. Onimani, Alaska, Nov. 22. Louisa, S. F. and way, Nov. 22. Louisa, S. F. and way, Nov. 22.

Steamships to Arrive. PASSENGERS AND FREIGHT. Panama, Am. S. F. and way, Nov. 21. Beaver, S. F. and way, Nov. 22. Rose City, S. F. and way, Nov. 22. Onimani, Alaska, Nov. 22. Louisa, S. F. and way, Nov. 22. Louisa, S. F. and way, Nov. 22.

Steamers Due to Depart. PASSENGERS AND FREIGHT. Panama, Am. S. F. and way, Nov. 21. Beaver, S. F. and way, Nov. 22. Rose City, S. F. and way, Nov. 22. Onimani, Alaska, Nov. 22. Louisa, S. F. and way, Nov. 22. Louisa, S. F. and way, Nov. 22.

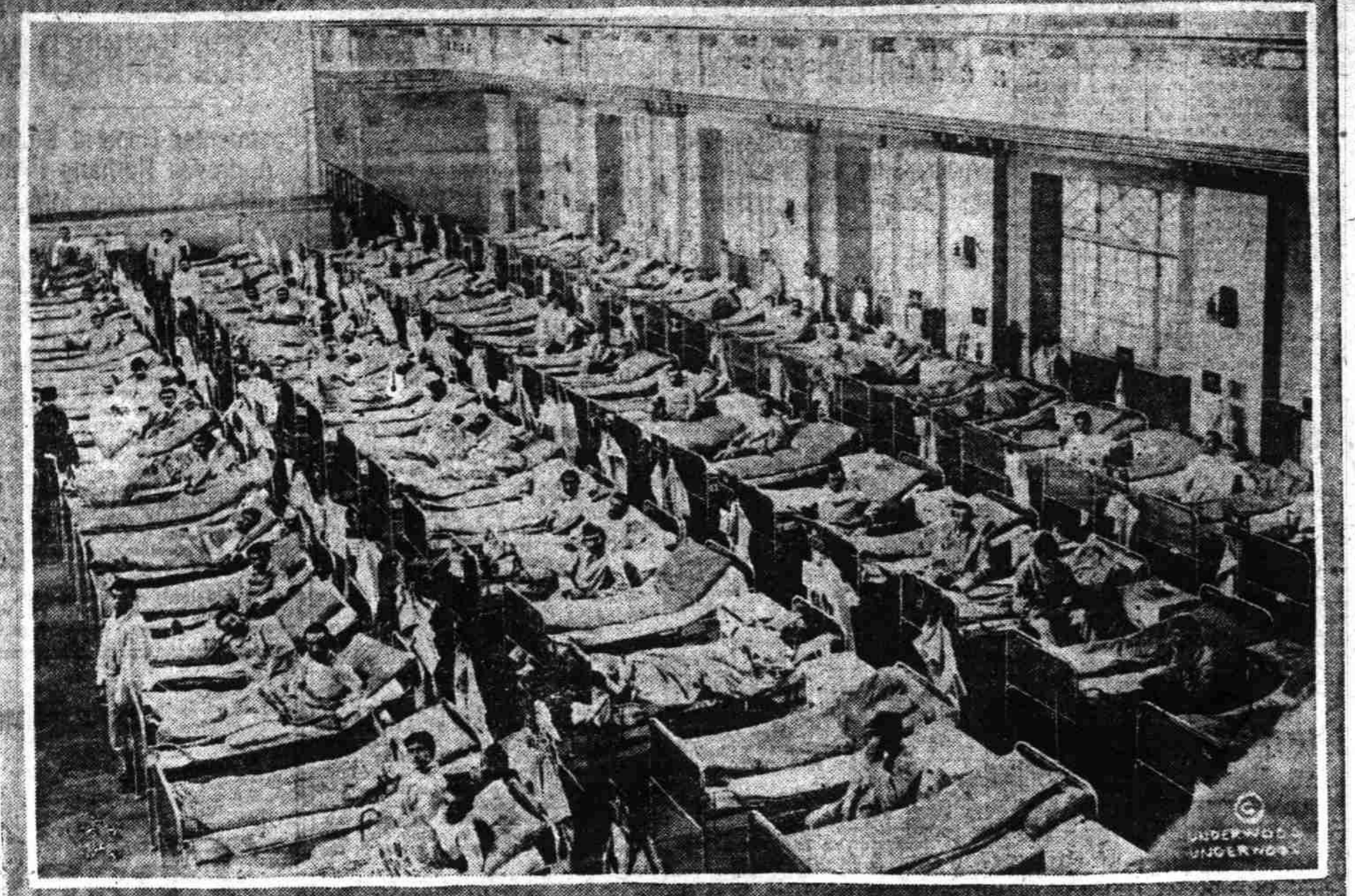
Steamships to Arrive. PASSENGERS AND FREIGHT. Panama, Am. S. F. and way, Nov. 21. Beaver, S. F. and way, Nov. 22. Rose City, S. F. and way, Nov. 22. Onimani, Alaska, Nov. 22. Louisa, S. F. and way, Nov. 22. Louisa, S. F. and way, Nov. 22.

Steamers Due to Depart. PASSENGERS AND FREIGHT. Panama, Am. S. F. and way, Nov. 21. Beaver, S. F. and way, Nov. 22. Rose City, S. F. and way, Nov. 22. Onimani, Alaska, Nov. 22. Louisa, S. F. and way, Nov. 22. Louisa, S. F. and way, Nov. 22.

Steamships to Arrive. PASSENGERS AND FREIGHT. Panama, Am. S. F. and way, Nov. 21. Beaver, S. F. and way, Nov. 22. Rose City, S. F. and way, Nov. 22. Onimani, Alaska, Nov. 22. Louisa, S. F. and way, Nov. 22. Louisa, S. F. and way, Nov. 22.

Steamers Due to Depart. PASSENGERS AND FREIGHT. Panama, Am. S. F. and way, Nov. 21. Beaver, S. F. and way, Nov. 22. Rose City, S. F. and way, Nov. 22. Onimani, Alaska, Nov. 22. Louisa, S. F. and way, Nov. 22. Louisa, S. F. and way, Nov. 22.

HOW WOUNDED FRENCH SOLDIERS ARE CARED FOR BY THE GERMANS IN A BERLIN HOSPITAL.



The German government permitted this photograph to be taken to disprove statements in the French and British press that wounded enemies do not get good care when they fall into the hands of the Germans. Here are many Frenchmen cared for in a first class hospital with every convenience, while the Germans are taxed to the utmost to provide for their own wounded.

ALL ALONG THE WATERFRONT.

Investigation into the grounding of the steamer Daisy Freeman is being held by the United States steamboat inspectors today. The Freeman was placed in the drydock yesterday and her injuries found to consist of lost rudder, broken rudderpost, her rudderstock split and 60 feet of keel gone aft.

WILL RESUME IN THE SPRING.

Alaska Liners Withdrawn During the Winter Months. That the Portland Steamship company with its three steamers will be unable to care for the business to be available next summer is the belief of C. S. Lindsay, agent for the company at Juneau, who arrived in Portland from Alaska last night.

PORTLAND COUPLE WILL TAKE TRIP EAST BY WAY OF CANAL ROUTE.

San Francisco, Nov. 21.—Congressman William Kent of California and Walter Wade and wife of Portland will be among the passengers on the American-Hawaiian steamer Honolulu, which sails at 10 a. m. tomorrow for New York via the Panama canal.

WILL DRAG FOR ANCHORS.

The American steamer Camino which will be the Belgian relief ship, arrived today with her flags at half mast by reason of the death, November 6, at Colon, of her third engineer, H. D. Lindley, who succumbed to heart failure. Two army deserters who stowed away at Panama were turned over to the military authorities here.

MUD HOOKS LOST BY FRENCH BARK MAY BE RECOVERED.

Port of Portland tugs will drag for the anchors and chains of the French bark Pierre Antonine near Desdemona light house this morning and if they are found ready will be placed aboard her and she will leave on tomorrow night. The ships' gear was lost in attempting to anchor after being brought in by the tugboat Onocota.

MARINE ALMANAC.

Weather at River's Mouth. North Head, Nov. 21.—Condition at the mouth of the river at 8 a. m. smooth; wind east, 20 miles; weather, cloudy.

DAILY RIVER READINGS.

Table with columns for Stations, Flood in feet, Height in feet, and Rainfall in inches. Includes data for Lewiston, Umatilla, Hood River, Albany, Salem, Willamette, and Portland.

STEAMSHIPS TO ARRIVE.

Table listing steamship arrivals including ship names, companies, and arrival dates. Includes entries for Panama, Beaver, Rose City, Onimani, Louisa, and others.

STEAMERS DUE TO DEPART.

Table listing steamship departures including ship names, companies, and departure dates. Includes entries for Panama, Beaver, Rose City, Onimani, Louisa, and others.

NEWS OF THE PORT.

Arrivals, November 21. Cortez, Nor. ship, Captain Skramstad, 79 days from Corral. Balfour, Guthrie & Co. Boleyn, Nor. ship, Captain Olsen, 64 days from Talcahuano.

AT NEIGHBORING PORTS.

Astoria, Nov. 21.—Sailed at 4 a. m.—Steamer Sklikton for San Pedro. Left up at 11:15 a. m.—Norwegian bark Boleyn, arrived at 11:15 a. m.—British bark Crown of India, from San Francisco, arrived at 11:15 a. m.

AT NEIGHBORING PORTS.

Astoria, Nov. 21.—Sailed at 4 a. m.—Steamer Sklikton for San Pedro. Left up at 11:15 a. m.—Norwegian bark Boleyn, arrived at 11:15 a. m.—British bark Crown of India, from San Francisco, arrived at 11:15 a. m.

AT NEIGHBORING PORTS.

Astoria, Nov. 21.—Sailed at 4 a. m.—Steamer Sklikton for San Pedro. Left up at 11:15 a. m.—Norwegian bark Boleyn, arrived at 11:15 a. m.—British bark Crown of India, from San Francisco, arrived at 11:15 a. m.

AT NEIGHBORING PORTS.

Astoria, Nov. 21.—Sailed at 4 a. m.—Steamer Sklikton for San Pedro. Left up at 11:15 a. m.—Norwegian bark Boleyn, arrived at 11:15 a. m.—British bark Crown of India, from San Francisco, arrived at 11:15 a. m.

AT NEIGHBORING PORTS.

Astoria, Nov. 21.—Sailed at 4 a. m.—Steamer Sklikton for San Pedro. Left up at 11:15 a. m.—Norwegian bark Boleyn, arrived at 11:15 a. m.—British bark Crown of India, from San Francisco, arrived at 11:15 a. m.

AT NEIGHBORING PORTS.

Astoria, Nov. 21.—Sailed at 4 a. m.—Steamer Sklikton for San Pedro. Left up at 11:15 a. m.—Norwegian bark Boleyn, arrived at 11:15 a. m.—British bark Crown of India, from San Francisco, arrived at 11:15 a. m.

AT NEIGHBORING PORTS.

Astoria, Nov. 21.—Sailed at 4 a. m.—Steamer Sklikton for San Pedro. Left up at 11:15 a. m.—Norwegian bark Boleyn, arrived at 11:15 a. m.—British bark Crown of India, from San Francisco, arrived at 11:15 a. m.

AT NEIGHBORING PORTS.

Astoria, Nov. 21.—Sailed at 4 a. m.—Steamer Sklikton for San Pedro. Left up at 11:15 a. m.—Norwegian bark Boleyn, arrived at 11:15 a. m.—British bark Crown of India, from San Francisco, arrived at 11:15 a. m.

EFFORT TO BE MADE TO SETTLE BOYCOTT ON THEATRE TODAY.

Building Trades Council and Representatives of the New Orpheum to Meet. Effort to reach some sort of a settlement will be made this afternoon at a meeting between representatives of the new Orpheum theatre, and a committee representing the Building Trades Council.

AT NEIGHBORING PORTS.

Astoria, Nov. 21.—Sailed at 4 a. m.—Steamer Sklikton for San Pedro. Left up at 11:15 a. m.—Norwegian bark Boleyn, arrived at 11:15 a. m.—British bark Crown of India, from San Francisco, arrived at 11:15 a. m.

AT NEIGHBORING PORTS.

Astoria, Nov. 21.—Sailed at 4 a. m.—Steamer Sklikton for San Pedro. Left up at 11:15 a. m.—Norwegian bark Boleyn, arrived at 11:15 a. m.—British bark Crown of India, from San Francisco, arrived at 11:15 a. m.

AT NEIGHBORING PORTS.

Astoria, Nov. 21.—Sailed at 4 a. m.—Steamer Sklikton for San Pedro. Left up at 11:15 a. m.—Norwegian bark Boleyn, arrived at 11:15 a. m.—British bark Crown of India, from San Francisco, arrived at 11:15 a. m.

AT NEIGHBORING PORTS.

Astoria, Nov. 21.—Sailed at 4 a. m.—Steamer Sklikton for San Pedro. Left up at 11:15 a. m.—Norwegian bark Boleyn, arrived at 11:15 a. m.—British bark Crown of India, from San Francisco, arrived at 11:15 a. m.

AT NEIGHBORING PORTS.

Astoria, Nov. 21.—Sailed at 4 a. m.—Steamer Sklikton for San Pedro. Left up at 11:15 a. m.—Norwegian bark Boleyn, arrived at 11:15 a. m.—British bark Crown of India, from San Francisco, arrived at 11:15 a. m.

AT NEIGHBORING PORTS.

Astoria, Nov. 21.—Sailed at 4 a. m.—Steamer Sklikton for San Pedro. Left up at 11:15 a. m.—Norwegian bark Boleyn, arrived at 11:15 a. m.—British bark Crown of India, from San Francisco, arrived at 11:15 a. m.

AT NEIGHBORING PORTS.

Astoria, Nov. 21.—Sailed at 4 a. m.—Steamer Sklikton for San Pedro. Left up at 11:15 a. m.—Norwegian bark Boleyn, arrived at 11:15 a. m.—British bark Crown of India, from San Francisco, arrived at 11:15 a. m.

AT NEIGHBORING PORTS.

Astoria, Nov. 21.—Sailed at 4 a. m.—Steamer Sklikton for San Pedro. Left up at 11:15 a. m.—Norwegian bark Boleyn, arrived at 11:15 a. m.—British bark Crown of India, from San Francisco, arrived at 11:15 a. m.

GERMAN SYSTEM OF TRENCHES IS SECRET OF HOLDING SUCCESS.

Burrows Made by Soldiers Are Not Visible at a Short Distance Away. Top of Trenches Are Protected So That Artillery Fire of the Enemy Will Not Be So Effective.

AT NEIGHBORING PORTS.

Astoria, Nov. 21.—Sailed at 4 a. m.—Steamer Sklikton for San Pedro. Left up at 11:15 a. m.—Norwegian bark Boleyn, arrived at 11:15 a. m.—British bark Crown of India, from San Francisco, arrived at 11:15 a. m.

AT NEIGHBORING PORTS.

Astoria, Nov. 21.—Sailed at 4 a. m.—Steamer Sklikton for San Pedro. Left up at 11:15 a. m.—Norwegian bark Boleyn, arrived at 11:15 a. m.—British bark Crown of India, from San Francisco, arrived at 11:15 a. m.

AT NEIGHBORING PORTS.

Astoria, Nov. 21.—Sailed at 4 a. m.—Steamer Sklikton for San Pedro. Left up at 11:15 a. m.—Norwegian bark Boleyn, arrived at 11:15 a. m.—British bark Crown of India, from San Francisco, arrived at 11:15 a. m.

AT NEIGHBORING PORTS.

Astoria, Nov. 21.—Sailed at 4 a. m.—Steamer Sklikton for San Pedro. Left up at 11:15 a. m.—Norwegian bark Boleyn, arrived at 11:15 a. m.—British bark Crown of India, from San Francisco, arrived at 11:15 a. m.

AT NEIGHBORING PORTS.

Astoria, Nov. 21.—Sailed at 4 a. m.—Steamer Sklikton for San Pedro. Left up at 11:15 a. m.—Norwegian bark Boleyn, arrived at 11:15 a. m.—British bark Crown of India, from San Francisco, arrived at 11:15 a. m.

AT NEIGHBORING PORTS.

Astoria, Nov. 21.—Sailed at 4 a. m.—Steamer Sklikton for San Pedro. Left up at 11:15 a. m.—Norwegian bark Boleyn, arrived at 11:15 a. m.—British bark Crown of India, from San Francisco, arrived at 11:15 a. m.

AT NEIGHBORING PORTS.

Astoria, Nov. 21.—Sailed at 4 a. m.—Steamer Sklikton for San Pedro. Left up at 11:15 a. m.—Norwegian bark Boleyn, arrived at 11:15 a. m.—British bark Crown of India, from San Francisco, arrived at 11:15 a. m.

AT NEIGHBORING PORTS.

Astoria, Nov. 21.—Sailed at 4 a. m.—Steamer Sklikton for San Pedro. Left up at 11:15 a. m.—Norwegian bark Boleyn, arrived at 11:15 a. m.—British bark Crown of India, from San Francisco, arrived at 11:15 a. m.

NEWS OF THE PORT.

Arrivals, November 21. Cortez, Nor. ship, Captain Skramstad, 79 days from Corral. Balfour, Guthrie & Co. Boleyn, Nor. ship, Captain Olsen, 64 days from Talcahuano.

AT NEIGHBORING PORTS.

Astoria, Nov. 21.—Sailed at 4 a. m.—Steamer Sklikton for San Pedro. Left up at 11:15 a. m.—Norwegian bark Boleyn, arrived at 11:15 a. m.—British bark Crown of India, from San Francisco, arrived at 11:15 a. m.

AT NEIGHBORING PORTS.

Astoria, Nov. 21.—Sailed at 4 a. m.—Steamer Sklikton for San Pedro. Left up at 11:15 a. m.—Norwegian bark Boleyn, arrived at 11:15 a. m.—British bark Crown of India, from San Francisco, arrived at 11:15 a. m.

AT NEIGHBORING PORTS.

Astoria, Nov. 21.—Sailed at 4 a. m.—Steamer Sklikton for San Pedro. Left up at 11:15 a. m.—Norwegian bark Boleyn, arrived at 11:15 a. m.—British bark Crown of India, from San Francisco, arrived at 11:15 a. m.

AT NEIGHBORING PORTS.

Astoria, Nov. 21.—Sailed at 4 a. m.—Steamer Sklikton for San Pedro. Left up at 11:15 a. m.—Norwegian bark Boleyn, arrived at 11:15 a. m.—British bark Crown of India, from San Francisco, arrived at 11:15 a. m.

AT NEIGHBORING PORTS.

Astoria, Nov. 21.—Sailed at 4 a. m.—Steamer Sklikton for San Pedro. Left up at 11:15 a. m.—Norwegian bark Boleyn, arrived at 11:15 a. m.—British bark Crown of India, from San Francisco, arrived at 11:15 a. m.

AT NEIGHBORING PORTS.

Astoria, Nov. 21.—Sailed at 4 a. m.—Steamer Sklikton for San Pedro. Left up at 11:15 a. m.—Norwegian bark Boleyn, arrived at 11:15 a. m.—British bark Crown of India, from San Francisco, arrived at 11:15 a. m.

AT NEIGHBORING PORTS.

Astoria, Nov. 21.—Sailed at 4 a. m.—Steamer Sklikton for San Pedro. Left up at 11:15 a. m.—Norwegian bark Boleyn, arrived at 11:15 a. m.—British bark Crown of India, from San Francisco, arrived at 11:15 a. m.

AT NEIGHBORING PORTS.

Astoria, Nov. 21.—Sailed at 4 a. m.—Steamer Sklikton for San Pedro. Left up at 11:15 a. m.—Norwegian bark Boleyn, arrived at 11:15 a. m.—British bark Crown of India, from San Francisco, arrived at 11:15 a. m.

CHURCH SERVICES.

(Continued from Preceding Page)
sewolt, low mass, 8:30. High mass and sermon, 10:30.
St. John the Baptist—Milwaukee—Father J. M. O'Neill, Mass. 8 and 10:30 a. m. Sunday, 7:30 p. m.

First—Park and Madison—Rev. Luther R. Dyer, D. D. 11 and 7:45. S. S. 7:30.
National Optimists—Theatricals—More than Material Good.

First—Park and Madison—Rev. Luther R. Dyer, D. D. 11 and 7:45. S. S. 7:30.
National Optimists—Theatricals—More than Material Good.

First—Park and Madison—Rev. Luther R. Dyer, D. D. 11 and 7:45. S. S. 7:30.
National Optimists—Theatricals—More than Material Good.

First—Park and Madison—Rev. Luther R. Dyer, D. D. 11 and 7:45. S. S. 7:30.
National Optimists—Theatricals—More than Material Good.

First—Park and Madison—Rev. Luther R. Dyer, D. D. 11 and 7:45. S. S. 7:30.
National Optimists—Theatricals—More than Material Good.

First—Park and Madison—Rev. Luther R. Dyer, D. D. 11 and 7:45. S. S. 7:30.
National Optimists—Theatricals—More than Material Good.

First—Park and Madison—Rev. Luther R. Dyer, D. D. 11 and 7:45. S. S. 7:30.
National Optimists—Theatricals—More than Material Good.

First—Park and Madison—Rev. Luther R. Dyer, D. D. 11 and 7:45. S. S. 7:30.
National Optimists—Theatricals—More than Material Good.

First—Park and Madison—Rev. Luther R. Dyer, D. D. 11 and 7:45. S. S. 7:30.
National Optimists—Theatricals—More than Material Good.

First—Park and Madison—Rev. Luther R. Dyer, D. D. 11 and 7:45. S. S. 7:30.
National Optimists—Theatricals—More than Material Good.

First—Park and Madison—Rev. Luther R. Dyer, D. D. 11 and 7:45. S. S. 7:30.
National Optimists—Theatricals—More than Material Good.

First—Park and Madison—Rev. Luther R. Dyer, D. D. 11 and 7:45. S. S. 7:30.
National Optimists—Theatricals—More than Material Good.

First—Park and Madison—Rev. Luther R. Dyer, D. D. 11 and 7:45. S. S. 7:30.
National Optimists—Theatricals—More than Material Good.

First—Park and Madison—Rev. Luther R. Dyer, D. D. 11 and 7:45. S. S. 7:30.
National Optimists—Theatricals—More than Material Good.

First—Park and Madison—Rev. Luther R. Dyer, D. D. 11 and 7:45. S. S. 7:30.
National Optimists—Theatricals—More than Material Good.

First—Park and Madison—Rev. Luther R. Dyer, D. D. 11 and 7:45. S. S. 7:30.
National Optimists—Theatricals—More than Material Good.

First—Park and Madison—Rev. Luther R. Dyer, D. D. 11 and 7:45. S. S. 7:30.
National Optimists—Theatricals—More than Material Good.

First—Park and Madison—Rev. Luther R. Dyer, D. D. 11 and 7:45. S. S. 7:30.
National Optimists—Theatricals—More than Material Good.

First—Park and Madison—Rev. Luther R. Dyer, D. D. 11 and 7:45. S. S. 7:30.
National Optimists—Theatricals—More than Material Good.

First—Park and Madison—Rev. Luther R. Dyer, D. D. 11 and 7:45. S. S. 7:30.
National Optimists—Theatricals—More than Material Good.

First—Park and Madison—Rev. Luther R. Dyer, D. D. 11 and 7:45. S. S. 7:30.
National Optimists—Theatricals—More than Material Good.

First—Park and Madison—Rev. Luther R. Dyer, D. D. 11 and 7:45. S. S. 7:30.
National Optimists—Theatricals—More than Material Good.

First—Park and Madison—Rev. Luther R. Dyer, D. D. 11 and 7:45. S. S. 7:30.
National Optimists—Theatricals—More than Material Good.

First—Park and Madison—Rev. Luther R. Dyer, D. D. 11 and 7:45. S. S. 7:30.
National Optimists—Theatricals—More than Material Good.

First—Park and Madison—Rev. Luther R. Dyer, D. D. 11 and 7:45. S. S. 7:30.
National Optimists—Theatricals—More than Material Good.

First—Park and Madison—Rev. Luther R. Dyer, D. D. 11 and 7:45. S. S. 7:30.
National Optimists—Theatricals—More than Material Good.

First—Park and Madison—Rev. Luther R. Dyer, D. D. 11 and 7:45. S. S. 7:30.
National Optimists—Theatricals—More than Material Good.

First—Park and Madison—Rev. Luther R. Dyer, D. D. 11 and 7:45. S. S. 7:30.
National Optimists—Theatricals—More than Material Good.

First—Park and Madison—Rev. Luther R. Dyer, D. D. 11 and 7:45. S. S. 7:30.
National Optimists—Theatricals—More than Material Good.

First—Park and Madison—Rev. Luther R. Dyer, D. D. 11 and 7:45. S. S. 7:30.
National Optimists—Theatricals—More than Material Good.