

### AUSTRIAN ROYALTY IS TAKING ACTIVE PART IN NATION'S CONTEST

Archdukes Are at the Front, Sharing Dangers, Hardships With the Troops.

### DUCHESSES ARE NURSING

Those Whose Health or Youth Does Not Permit of Active Fighting Are Training Reserves.

By Alice Rohe.  
Vienna, via Rome, Oct. 6.—(By mail to New York.)—Sharing all the hardships experienced by any common soldier or ordinary nurse, every member of the Austrian imperial family is taking an active part in the European war.

Archduke Frederick is at the head of the commanding staff, to which division Archduke Charles Francis Joseph also belongs.

Archduke Joseph Ferdinand was in command of a regiment in General Auffenburg's army early in the war, but has since been given an independent regiment.

Archduke Peter Ferdinand is fighting at the head of his division under General Auffenburg.

Archduke Leopold Salvadore is inspector general of artillery.

Archduke Charles Albert belongs to the cavalry staff.

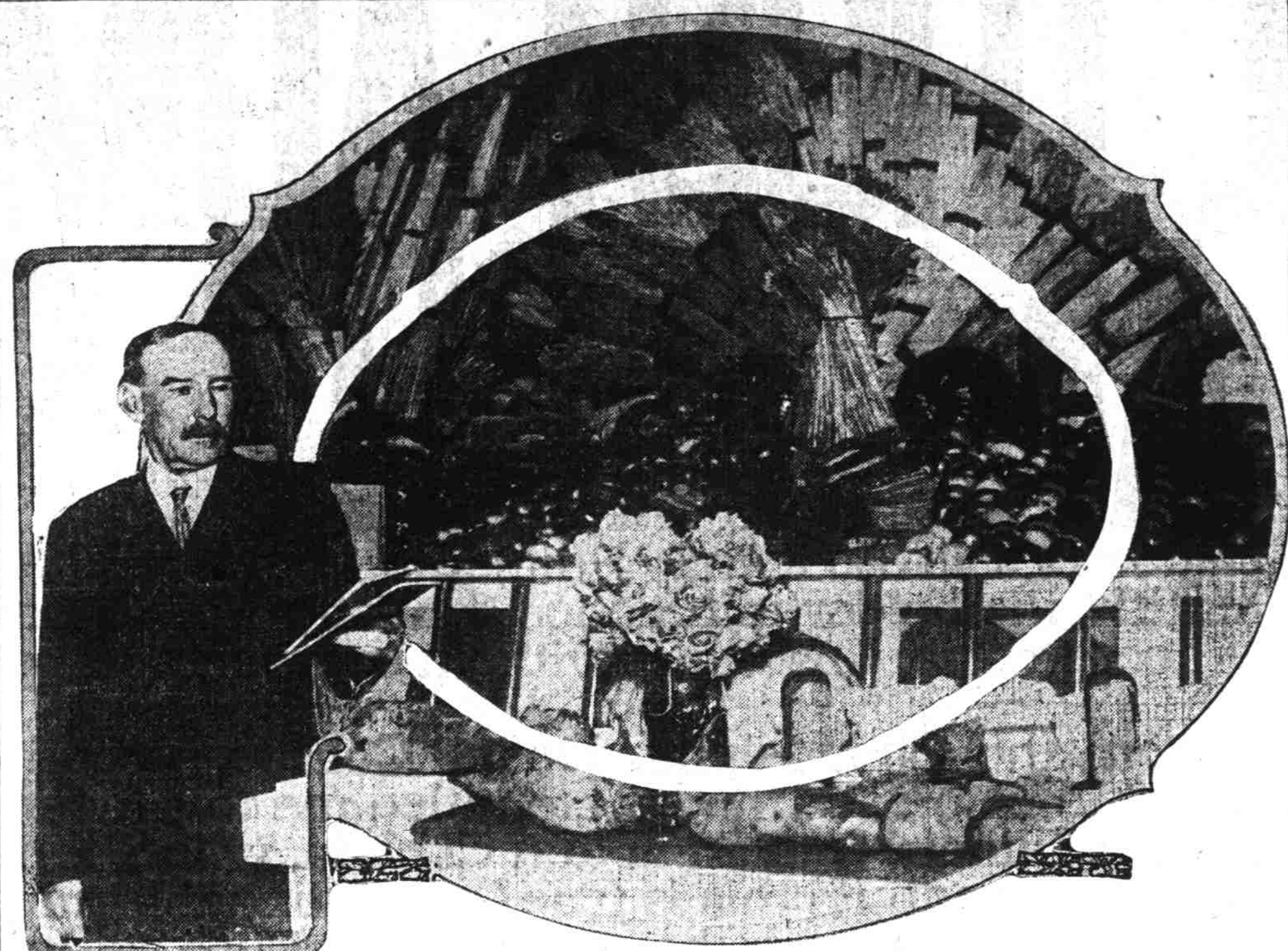
Archduke Joseph commands an infantry division.

Archduke Francis Salvadore is an inspector of volunteers. He is aided by Archduke Eugene, whose health does not allow him to participate in actual field fighting. Between them they have developed several army corps.

Archduke Maximilian, who, only 19 years old, lacks the necessary experience for a field command, is receiving practical instruction preparatory to going to the front.

Archduchesses Maria Theresa, Maria Josepha and Isabella Maria are serving as nurses and have even been upon the battlefield. Archduchess Augusta is working in a hospital in Budapest.

### BIG CROPS AND VACANT ACRES CALL LANDLESS MEN



Mayor W. W. Smead of Heppner, Or., and his Morrow county exhibit at the Land Products show.

Back of the attractive display of soil-grown products exhibited by Morrow county at the Manufacturers' and Land Products Show is a great virgin territory of 2525 square miles in the north central part of Oregon—a territory where land is cheap and in need of only man to fill it.

The soil—volcanic ash for the most part—is rich; the resources of the county varied; the climate is such that almonds, wheat and timber grow within a radius of a few miles of each other.

In the booth Mayor Smead of Heppner, who is in charge, shows a hundred different kinds of vegetables and scores of fruits, the products of Morrow county's bottom lands, where dark loam, rich in humus, makes squashes ripen at 100 pounds and produces between 100 and 200 bushels of potatoes

to the acres, and other root crops in proportion.

From these bottom lands come, too, the forage crops—alfalfa, clover, vetch, timothy and corn.

The apples, big and rosy, which are on display, are the products of door-yards only, because Morrow county has no commercial orchards, although she has proved her right to them.

Stretching across the back portion of the exhibit are long glass tubes filled with wheat. They are samples from the grain zone in the middle and western portions of the county, a district where 150,000 acres of wheat is grown, and a crop of 1,500,000 bushels is garnered each summer. The principal varieties are "fortyfold," "Oregon club" and "bluestem," and the cost of tillage and harvest averages \$5.55 per acre. Wheat from Morrow has captured first prize at the world's

fair in Chicago, the Pan-American fair at Buffalo and our own Lewis and Clark exposition in Portland.

In one corner of the display is a sack of wool. It occupies an exceedingly inconspicuous place in the booth, but the wool and sheep business in the county is one of its principal wealth producing sources. Out in the grazing districts—wide stretches of rolling hills—are 175,000 sheep. The wool production alone aggregates 2,000,000 pounds each year. The Merino stock predominates.

In those grazing districts and in the mountains are bands of cattle also, blooded stock, which yield a fortune, while in the lowlands are hogs and poultry.

In the mountains is timber and lumbering mills. In brief, there stands behind the Morrow county exhibit—1,580,000 acres of land, of which 1,250,000 acres are tillable; a district rich in

resources, where development is just beginning and where the landless man can buy at a rate varying from \$10 to \$50 an acre.

### NOTES OF THE WAR

**Would Buy Off France.**  
London, Oct. 30.—A Chronicle Paris dispatch said Germany had offered France Metz, the neighboring part of Lorraine and perhaps some of Alsace, to make peace, but that France had refused.

**British Destroyer Hit.**  
London, Oct. 30.—The admiralty announced Lieutenant Wanton and a gun crew of eight on the destroyer Falcon and a sailor on the cruiser Bellegard were killed off the Belgian coast by German shells, besides several wounded.

**German Colony Taken.**  
Bordeaux, Oct. 30.—Word was received from General Dohell, French commander of the invaders in German Equatorial West Africa, that Edoa, an important town on the Salanga, had been captured by the Franco-British forces.

**Louis of Battenburg Resigns.**  
London, Oct. 30.—Being of German birth, though a naturalized Briton, Prince Louis of Battenburg was so much criticized that he resigned as a lord of the admiralty, and it was reported Baron Fisher would succeed him.

**Jemtechug's Loss 84 Men.**  
Tokio, Oct. 30.—The official statement was made that two officers and 84 men perished when the German cruiser Emden sank the Russian cruiser Jemtechug in Fenang harbor.

**Report Crown Prince Wounded.**  
Rome, Oct. 30.—The German crown prince was again reported wounded while directing the attack on Verdun.

### SOUTHEAST EUROPE IS EXPECTED TO JOIN IN WAR AGAINST TURKS

(Continued from Page One.)

Albania, would be quite in keeping with the tangled condition of af-

airs in the southeast at present.

Roumania has from the first been considered friendly to the allies, but Bulgaria was at the outset supposed to be pro-German, Russian influence is understood to have won the Bulgarians over to the allies, however, and it was the general impression in official circles here that they would be with the latter, and especially opposed to the Turks.

It is, nevertheless, a fact that the Roumanian royal family will do its best to keep that country neutral at least, since the present king, like his late father, is German in his sympathies.

**German Bombs Deadly.**  
No official confirmation had been received today of the Daily Mail's report that a German submarine had attacked the British battleship Venerable and been sunk off the Belgian coast.

The story that a first class British battleship, unnamed, had been destroyed by a mine, also remained a mere rumor.

There is, however, definite confirmation of accounts of German bomb dropping by aeroplanes at Bethune and Dunkirk. According to the Mail, 19 women were killed and 40 injured at Bethune, while at Dunkirk a woman and a child were said to have perished.

From Petrograd came claims of a complete Russian victory over the Germans west of the Vistula.

**Italy Expected to Join.**  
Paris, Oct. 30.—Turkey's action in joining the Germans and Austrians in arms was believed here today to be certain to drag Italy into the war on the Anglo-Franco-Russian allies' side.

Representatives of the French foreign office were reported to have gone to Rome already, and it was understood a momentous conference was in progress there.

High officials declared the sultan's entrance into hostilities meant that Germany realized the Teutons could not win alone on both their eastern and western frontiers.

The Turks, experts said, could put from 700,000 to 900,000 men into the field.

### DR. J. C. SMITH HAS MADE BIG GAINS IN COUNTY OF MARION

(Continued from Page One.)

conclusion that he would not or could not curb legislative extravagance and would be entirely under the control of his advisers.

Chamberlain sentiment is strong in every section of the county, and it is certain that he will get the largest majority in Marion county he has ever received. Throughout the county the action of Booth's managers in forcing him on the Republican party is denounced by the progressive element of the party; Booth's support has dwindled since the facts regarding his acquirement of vast timber holdings in Oregon and close connection with the predatory interests were laid bare.

**Editor "Stood Pat."**  
Congressman W. C. Hawley is back here to attempt to stem the stampede of Republican voters of this district to Fred Hollister. The desperation to which he has been driven is shown by an incident at Aurora. The Observer, a Republican newspaper, es-

posed the cause of Hollister and Ralph Glover, who is private secretary to Congressman Hawley and has been here for months managing his campaign, wrote to business men of Aurora to line up the editor of the Observer for Hawley by threatening him with a loss of business.

One of the business men took the letter to the editor of the Observer, and the latter answered the Hawley threat by redoubting his efforts to defeat the congressman. The net re-

### Warm the bath room

with the glowing heat of the

### PERFECTION OIL HEATER

Mother and children need it for the bath—father for his morning shave.

Dealers everywhere  
Write for booklet, "Warmth in Cold Corners."  
Standard Oil Company  
(California)  
Portland



For Best Results Use Pearl Oil

VOTE  
316 X YES

Paid advertisement by Joseph T. Hinkle, Hermiston, Or.

—Are you a father?  
—Have you any boys between 3 and 17?  
—If you have, and they need overcoats, take them into MOYER'S

## Half-Price Overcoat Sale!

—Moyer will outfit two boys at the price of only one coat.  
—Good, sturdy overcoats, right from Moyer's regular stock.  
—Moyer's got too many overcoats.  
—They've been \$3.45, \$3.95, \$4.35, \$5.00, \$6.00, \$6.50, \$7.50, \$8.50, \$10.00.

Buy them now at Half Price!

When you see it in our ad, it's SO!

# MOYER

Third and Oak Street Store Only

Fast Service On Time

**LAND PRODUCTS SHOW OPEN SUNDAY**

**GRAND SACRED CONCERT**

**WEEK-END VISITORS INVITED**

Reduced fares apply from Willamette Valley Points on the

**OREGON ELECTRIC RAILWAY**

Tickets sold Oct. 31, Nov. 3, 5, 7, 10, 12, 14—2-day limit

**NORTH BANK ROAD POINTS**

Special fares and dates of sale may be obtained of agents of the S. P. & S. Ry.

**PORTLAND TICKET OFFICES**

10th and Stark Jefferson-St. Station  
North Bank Station 10th and Morrison  
5th and Stark

## GOING EAST?

On Your Next Trip Try the

## ORIENTAL LIMITED

Via the

## GREAT NORTHERN RAILWAY

Leaves Portland Daily 7:25 P. M.

Through standard and tourist sleeping cars to St. Paul and Minneapolis in 59 hours, Chicago 72 hours. Compartment Observation Car—Unexcelled Dining Car Service—Electric Lighted—Vacuum Cleaned—Afternoon Tea Served Free—No better service anywhere.

Tickets and Sleeping Car Reservations at City Ticket Office, 348 Washington Street (Morgan Building) and at Depot, 11th and Hoyt Sts.

H. DICKSON  
C. P. & T. A.

Telephones  
Marshall 3071  
A-2286

**COAST LINE SERVICE**

Portland to Tacoma, Seattle, Vancouver, B. C., and Intermediate Points.

**10 A. M.—5:00 P. M.—12:30 Midnight**

5:00 P. M. train carries through Standard Sleeper Portland to Vancouver, B. C.

## IS HE MAD?

Yes! No!  
Sir Gilbert Parker Herman Ridder

**The Kaiser—Right or Wrong?**

**The Deadlock in France**  
By Captain Paul Beck, U. S. A.

**The Battle of the Pacific**  
By Arthur I. Street

**Will California Drag U.S. Into War?**

**Which Western States Will Go Dry?**

**War or No War, The Expositions**

Sir Gilbert Parker, Herman Ridder, Peter Kyne, Grant Carpenter, E. Alexander Powell, Edward Hurlbut, Thomas Dreier and others, all in

# NOVEMBER

# Sunset

ON SALE AT ALL NEWS STANDS

## A Table Beer

—to be used in the best homes.

**Edell Krauw**

is brewed with this in mind. A product of the purest ingredients and minimum amount of alcohol.

**PHONE YOUR GROCER**

**Portland Brewing Company**