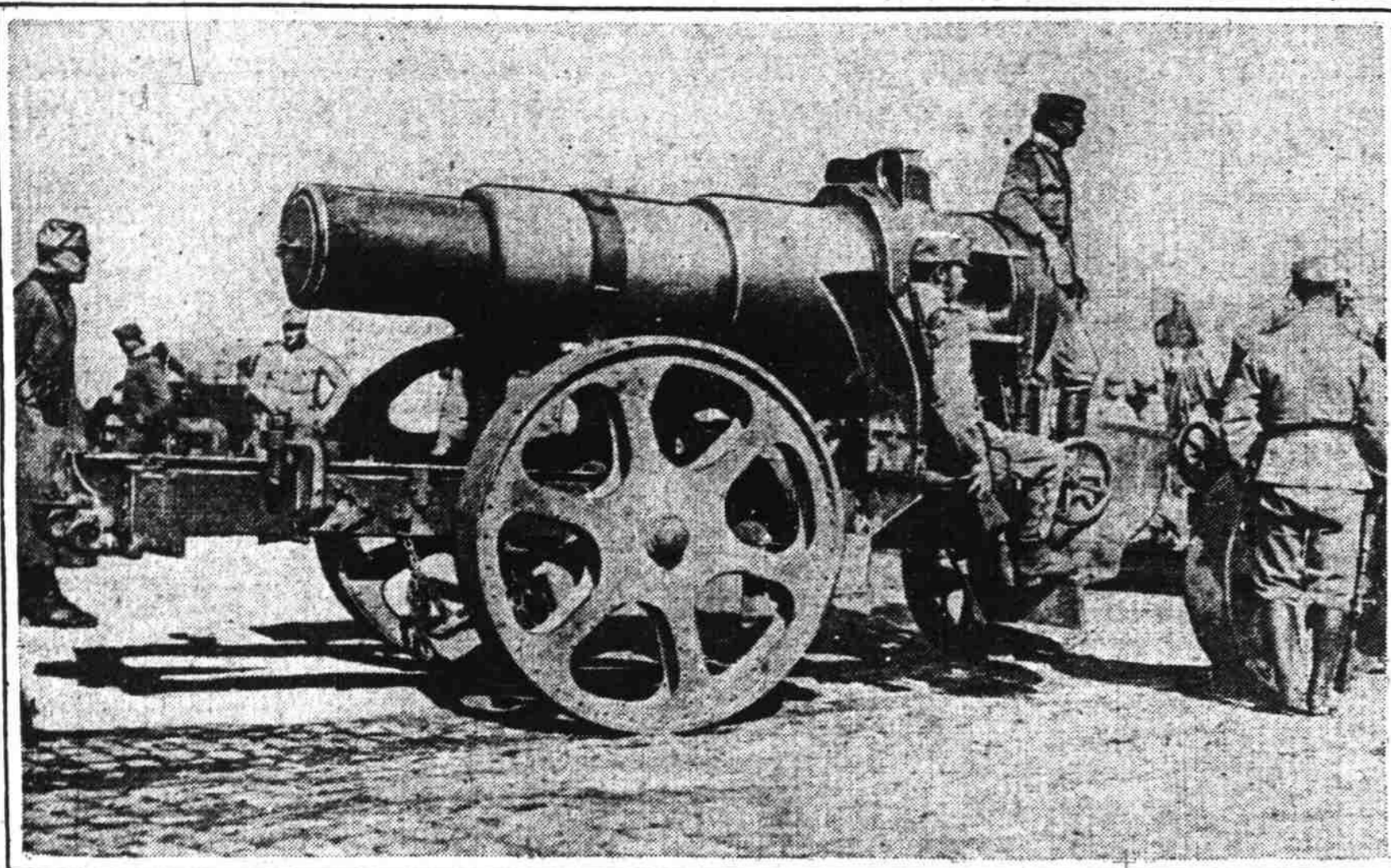


# AGENTS OF DEATH AND DESTRUCTION THAT ARE FULFILLING THEIR MISSION



**ENGLISH SOLDIERS CALL THIS GERMAN SIEGE GUN "JACK JOHNSON"**

This siege gun was used effectively by the Germans in their attack upon Namur and Maubeuge, after which it was transported to Brussels and thence to Antwerp to aid in reduction of those Belgian cities. Austrian soldiers are shown manning gun.



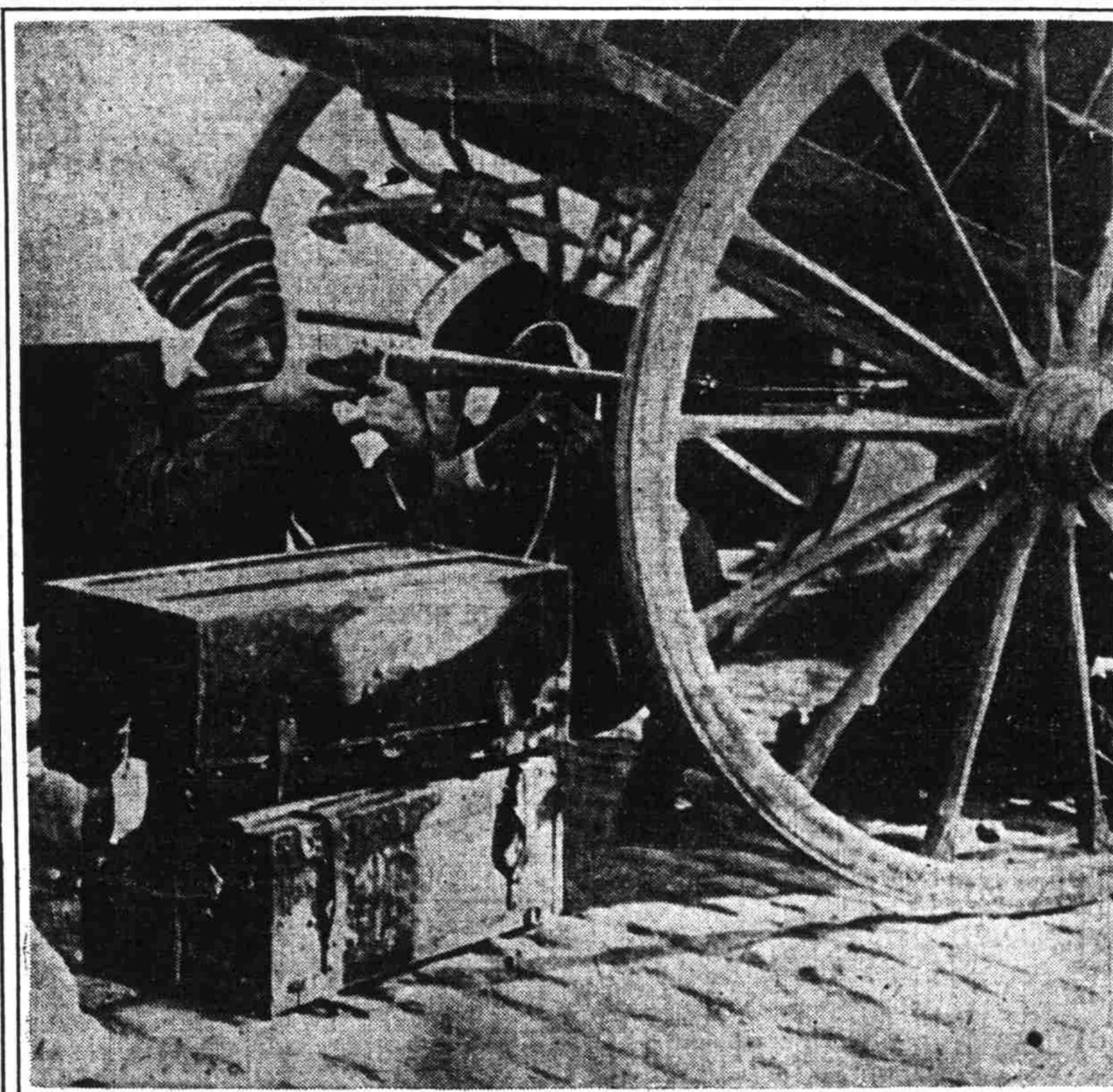
**COMMANDING GENERALS OF THE FRENCH ARMY**

Here are the military geniuses upon whose direction the fortunes of the French army largely depend. From left to right they are Generals Michel, Joffre, Gallieni and Pau.



**RE-ESTABLISHING COMMUNICATION**

French soldiers are here seen rebuilding a telegraph line in a village south of Noyon which was destroyed by the Germans during their advance.



**THESE TURCOS ARE TAKING NO CHANCES**

Since their participation in the continental campaigns as soldiers of France, the swarthy warriors from Africa have acquitted themselves creditably. A pair of them are here shown about to fire upon the enemy in the streets of Soissons. In choosing a position they have selected one that is well protected.



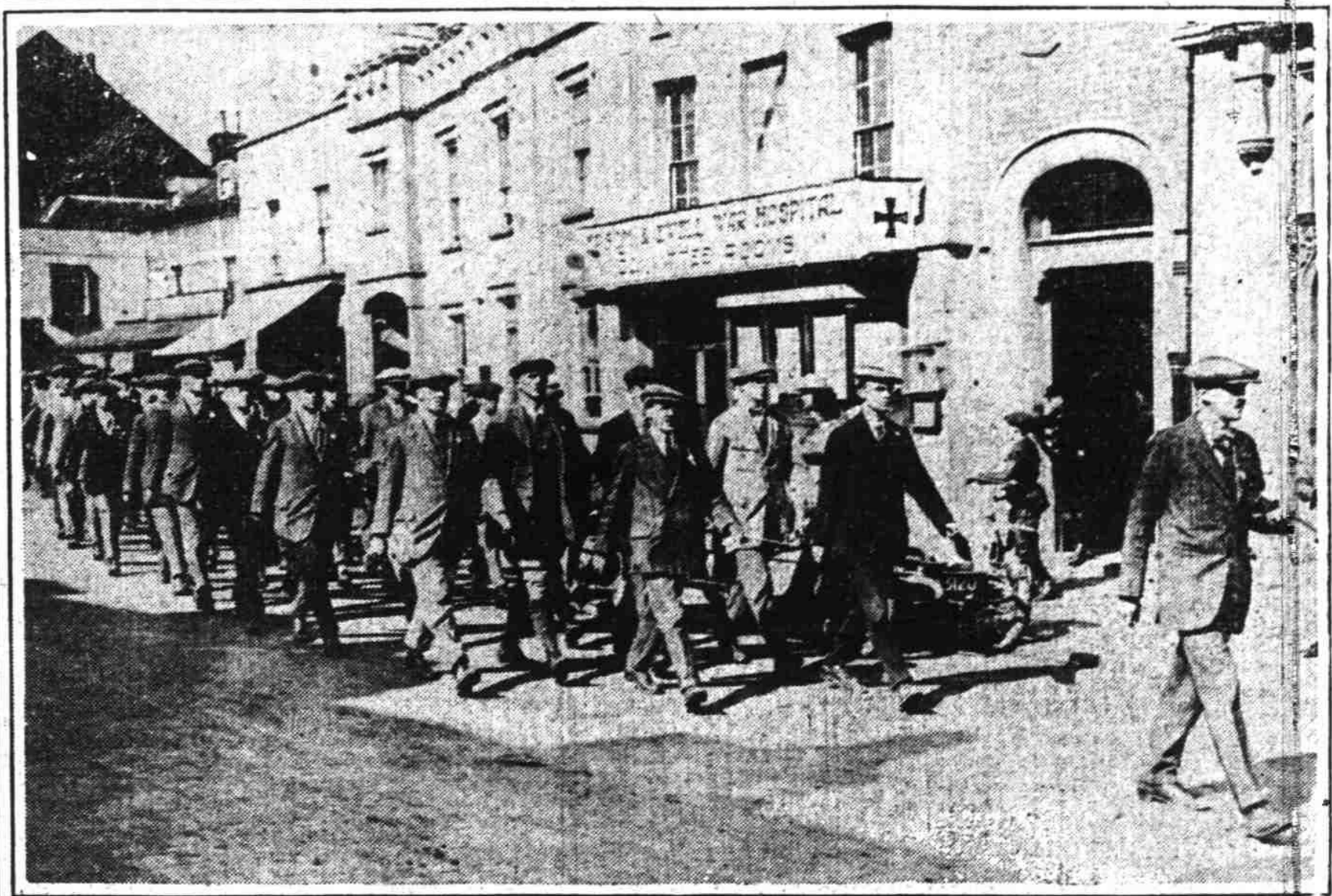
**RUINS OF RHEIMS CATHEDRAL**

This photograph shows the destruction of a massive doorway of the Rheims cathedral wrought by a German shell during the bombardment.



**A VEGETABLE GARDEN TRANSFORMED INTO A BATTLEFIELD**

Here are shown a group of Belgian soldiers, both infantrymen and machine gun men, preparing for a German attack. The fighters are preparing to take their stand in the midst of a field of unharvested crops, which, like all others in the line of the fighting, was abandoned when war was begun.



**FROM COLLEGE TO THE ARMY**

Oxford and Cambridge students en route to Epsom Downs to enter training as soldiers. Many of these young men, sons of wealthy English families, have given up their studies in the universities to serve their country as privates in the ranks. (Photographs, copyright 1914, by The International News Service.)