

VAST AREA UNDER ONE OWNERSHIP ON LOWER ROGUE RIVER

Town, Ranches, Cannery, Timber Stands and Stock Ranges Included.

IMPROVEMENTS PLANNED

As Future Settlement Warrants, Systematic Scheme of Upbuilding Will Be Carried Out.

(Special to The Journal.)—Marshfield, Or., Oct. 10.—Down in Curry county, in the beautiful valley of the Rogue river, one of the most attractive localities on the Oregon coast, is a little empire of its own. Under one ownership are town, school, hotel, store, fishing rights, salmon cannery, lumber mill, big herds of cattle and sheep, extensive stock ranges, fertile fields under cultivation and vast timber resources. The property is that of the Wedderburn Trading company, owned by the Macleay estate of Portland of which Roderick Macleay of that city is the president.

The Wedderburn Trading company at the present time is one of the most important business institutions in Curry county and promises in the immediate future to be one of the most valuable factors in the settlement of that richly wooded but as yet undeveloped and thinly settled county of Oregon.

While the estate is a property which stands by itself and could exist alone and independent of the rest of the county within the bounds of its own fences and waterways, that is not the policy of the present owners. The whole property was formerly owned by the late R. D. Hume who was known as "The King of Rogue River." The estate was purchased by the Macleay interests of Portland in March, 1910. Mr. Hume devoted many years in adding to his holdings and acquiring additional lands and rights. But the present owners are developing and have started to open the lands for settlement.

The property was purchased as an investment. Mr. Macleay has faith in the future of Curry county and realizes that settlement by people who will become prosperous and bring about a higher and more intense development of the land constitute the greatest need not only of his property but of the county. There are few people in Curry county, fewer than 3000, while the resources are great. Mr. Macleay wants to develop his land and the locality and with this end in view has done much to help and cooperate with all the people of the Rogue river district of the county.

The holdings of the Wedderburn Trading company are valuable from a business standpoint. It is an unique property as it incorporates several different lines of resources and industries, requiring different departments of management. There are the salmon fishing rights and the salmon cannery, the general store which is itself a large concern, the farming and stock raising and the lumber mill with behind it an almost endless supply of timber.

George Johnson, an experienced fishery and cannery man has charge of the cannery; Will White is foreman of the farms and stock ranges; Thomas Carey is manager of the store and Attorney W. H. Meredith, the district attorney of Curry county, is lawyer and general business manager for the company.

Mr. Macleay himself spends much of his time during the summer months and during the winter at Wedderburn. He has for his residence a large bachelor hall, equipped with modern conveniences and in charge of the Chinese servants and house catered on a point overlooking the town, the river and the ocean. Here Mr. Macleay can entertain 12 of his friends in comfort and on many occasions acquaintances from Portland and other places have visited the place and enjoyed Mr. Macleay's hospitality.

16,000 Acres in Tract

The property consists of about 16,000 acres, about 5000 of which are farming and grazing lands. It extends from the ocean up Rogue river for about 12 miles, the estate owning both sides of the river for practically the entire distance. Along the river there are fertile bottom lands backed by rolling hills rich in grass and used for grazing. Farther up the river are timbered lands. On the estate there are about 175,000,000 feet of standing timber but in addition there is a large amount of timber which is on adjoining lands and which must eventually find its way through the Rogue river. The saw mill in Wedderburn can cut 50,000 feet of lumber a day. It has so far only been used for furnishing lumber for the estate and the local demand but when the lumber market warrants it could be operated regularly. Mr. Macleay plans that he can build boats which can cross the bar of the river and carry 200,000 feet of lumber economically.

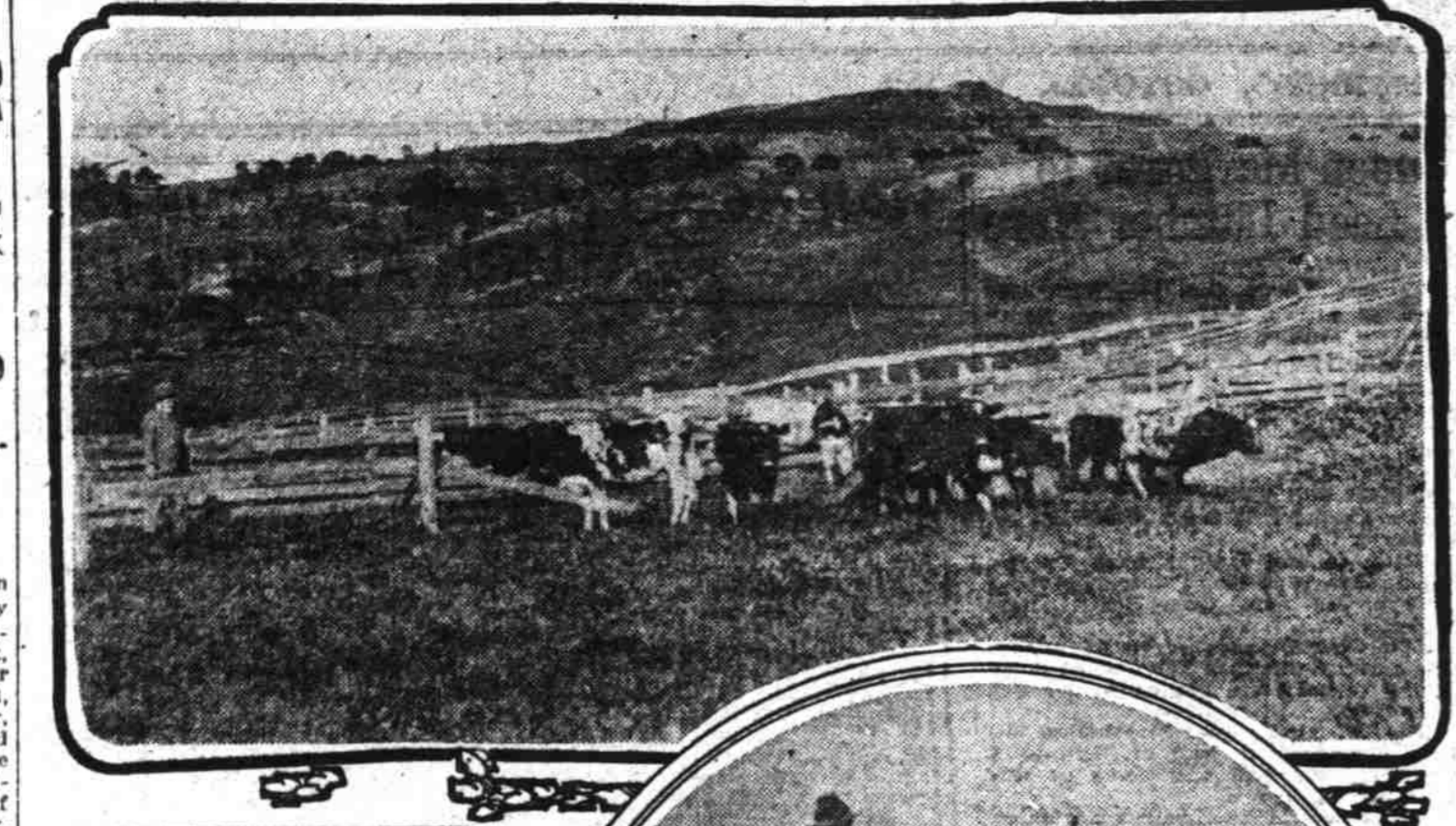
Many claim for the lower Rogue river that it is one of the most picturesque parts of Oregon. There is one place on the Macleay property which Mr. Macleay claims affords as fine a view as can be enjoyed in the state. On the top of a hill at an elevation of 800 feet one can, without moving more than turning the head, look in one direction over cultivated fields, over the timbered lands and town, and grazing lands dotted with sheep and cattle; in another direction at mountains 3500 feet high; while in still another direction

Free Treatment for Piles

Sample treatment of Pyramid Pile Remedy mailed free from quick relief, stops itching, bleeding or protruding piles, hemorrhoids and all rectal troubles. In the privacy of your own home. Pyramid Pile Remedy is for sale at all drug stores, 50c a box.

Mail this Coupon to the PYRAMID DRUG COMPANY, 616 Pyramid Bldg., Marshall, Mich. with your full name and address on a slip of paper, and sample treatment of Pyramid Pile Remedy will be sent you at once by mail. FREE, in plain wrapper.

CURRY COUNTY COMMUNITY RICH IN MANY RESOURCES AWAITS DEVELOPMENT



Top—A group of Curry county cattle. Bottom—Rogue river salmon.

one can view miles of the ocean beach and expanse. The farm management of the estate is quite a big business. Many hundred acres of land have been plowed and placed under cultivation, sheep by the thousands are herded over the hills and hundreds of cattle are grazed. It is the intention of the owners to cut down the number of sheep to perhaps 1000 or 2000 and go more into the cattle business to save the pastures from the close forcing of sheep which may in a few years past been raised in Curry county. There are several separate ranches which are numbered but there is one main ranch about three miles from the town which is the headquarters of the farming. Here are located the foreman's house, quarters for the farm employes, big barns, harness shop, blacksmith shop, chicken houses, piggeries and every kind of building needed on a farm, numbering 15 or 20 in all.

There is a first class slaughter house and a sheep shearing establishment. Every kind of machinery needed for modern farming is to be found.

In addition to the sheep, wool and cattle produced, hogs are raised on a large scale. When ready for market they can be shipped to any port on the small gasoline ocean going schooners which regularly make the port. Grain crops and general farming are important factors. After Mr. Hume's death and before the present owners took possession of the property the buildings were much run down. Mr. Macleay has expended many thousands of dollars repairing the buildings, putting up new ones where needed and building fences. There are now 26 miles of fences on the farms. More land has been put under cultivation than ever before. As a farm the whole place has been put in a workable condition and pending the time of settlement the property is operated as one big farm.

Improvements in Wedderburn

Improvements have likewise been made in the town of Wedderburn, which is opposite Gold Beach, the county seat, and connected by means of a ferry across Rogue river. Mr. Macleay had the hotel opened so there would be accommodations for the fishermen who wanted the board or for transient and new houses for employes and other needed buildings have been erected. When conditions of settlement warrant the expansion of the town is to be on the level land for quite a large place, a portion having been chosen to hold as an additional townsite.

From a business standpoint the salmon canning and packing is the most important feature of the big estate. In fact it affords the only big payroll for that part of the county and each year it keeps much in giving employment to the people and circulating cash. As high as \$100,000 is paid out by the company in a fishing season.

The Rogue river salmon are famous for their quality and the Wedderburn Trading company has every facility for catching and packing the fish. The fishermen are paid 50 cents each for Chinook salmon and the company furnishes the fishing gear. In enormous warehouses are kept everything that may be needed in fishing. The company owns about 250 big nets. The cannery has been equipped with the most modern machinery. Experts are in charge of the departments and Chinamen are imported for much of the work in the cannery. The plant is built along big wharves and consists of a number of buildings including a modern cold storage plant.

The salmon is put up in attractive shape in cans and also a large amount is mild cured and packed in barrels. All through the season fishermen are at work on the river and receive money for their fish up to the cannery. It is a busy place taking care of the catch and shipping out on schooners the finished product. Later on in October silversides are caught and canned. On occasions of the existing laws of the state the Rogue river salmon fishing is conducted under disadvantages not suffered at other fishing places on the coast. There are two closed days each week on Rogue river while at other harbors of Oregon there is but one day in the week when the fishermen can not catch the salmon. This of course, limits the season. The season for catching Chinook salmon on Rogue river is from April 15 until August 5. Then there is a closed season until September 1 when the cannery is to start again. This makes a closed season of 25 days while it is claimed that it should be only two weeks. After September the fish are not as good and do not bring as good a price as earlier in the year. Until that time only gill nets can be used. Seines can only be used after September 1 when the fish are not so good.

Fishing Restrictions Annoying

There are also restrictions regarding steelheads. They cannot be caught during the summer. This is because of the fish up the river and they are wanted to protect the game fish. It is held on the lower river that only the large fish would be caught and that those which go to the waters of the upper Rogue river are of a size passed by for commercial purposes. It is claimed that because of this law thousands of big fish are lost. It is probable that at the next legislative effort will be made to have changed the laws which, it is claimed, are unfair for Rogue river fishing which means so much as an industry in that part of the state. The catch and pack of salmon this year will be large and it will be a good year for the people living in the locality. Mr. Macleay hopes that it will not be many years before a coast railroad

GYPSY PROPHECY IS RECALLED IN VIEW OF CRITICAL EVENTS

Germany Prepares For Over 40 Years

War of 1870 Taught That Another Struggle With France Was Bound to Happen.

Berlin, Oct. 10.—Ever since the Franco-German war of 1870 the German empire has been organized to resist the attack which was foreseen as soon as the rapid recovery of defeated France attested her exuberant vitality and patriotic desire to recover the lost provinces of Alsace and Lorraine. Moltke advised his government to provoke a fresh war with France in 1875 to forestall the danger. In the course of conversation, Herr von Jagow expressed the belief that no general European war was likely to occur before the end of 1913. He gave as his reason the influence of a prophecy made to the kaiser's grandfather, Prince William of Prussia, at Mainz in 1849. Prince William of Prussia, who was proclaimed German emperor at Versailles on January 18, 1871, was in 1849 wandering incognito in the Rhine provinces, attended only by an aide-de-camp. He had incurred great unpopularity by his attitude during the Berlin revolution of March, 1848, and had been obliged to spend some time in England when he returned, still a semi-fugitive, to the Rhineland. What the Gypsy Said. At Mainz a gypsy woman offered to tell him his fortune and addressed him as "Imperial majesty." Not a little amused—for at that moment his chance of succeeding to the throne of Prussia seemed slight—the prince asked, "Imperial majesty, and of what empire, pray?" "Of the new German empire," was the reply. "And when is this empire to be formed?" he inquired. The woman took a scrap of paper and wrote on it the year 1849. Then she placed the same figures in column beneath: 1849, 1, 8, 4, 9, and adding them together obtained the total, 1871. "And how long am I to rule over this empire?" asked Prince William again. The woman repeated the arithmetic operation, taking the number 1871, and adding the same figures in column—1871, 1, 8, 7, 1, which gave the result, 1849. Astonished by her confidence, the prince then asked: "And how long is this fine empire to last?" Then the woman, repeating the figures, 1849, 1, 8, 8, 8, obtained the result, 1913. Story Soon Spread. The story soon spread in Prussian court circles. Prince William became German emperor in 1871 and died in 1888. The effect of the double fulfillment of the prophecy upon the present German emperor's mind was great, and it seems it entered into the calculation of Prussian diplomatists as long ago as 1899.

Willbridge May Annex

Willbridge, Or., Oct. 10.—Work is now nearly completed on the eleven mile stretch of the new Hilledale drive along Willamette Heights. The cost to date is about \$85,000. The Salzman road is being rolled and overhauled from the Linton road at Willbridge for about two miles to its junction with the Hilledale drive. This road was hard surfaced with crushed rock last fall for more than a mile and the work will now be completed. There is now nearly a mile of piles driven along the waterfront. Three pile-drivers are at work on what will probably be the largest dock in the state. The channel on this side is to be dredged and deepened. At a citizens' meeting the consensus of opinion expressed by several speakers was in favor of annexing this district to Portland.

Quit Scratching!

Zemo Stops Itching and Burning in a Jiffy—Quickly Conquers Eczema and Other Skin Tortures.

Write for Free Trial Bottle.

Scratching stops as soon as the use of Zemo is begun—and all that awful burning and itching stops too. Pimples, sores begin to fade away at once, and rapidly become healed. The skin responds to the action of this clean, antiseptic, non-greasy liquid. Letters, by the thousands, telling of Zemo's cures, prove a very real claim for Zemo, but you can prove it for yourself. Buy a 25 cent bottle from your druggist today and get immediate relief. Send your address and 4c (for actual postage) to E. W. Rose Co., Laboratories, Dept. 30, St. Louis, Mo., for free trial bottle (in plain wrapper) that will show you what Zemo can and will do. If you try Zemo for after shaving, you'll learn something to your advantage. Zemo is sold and guaranteed by druggists everywhere, and in Portland by Hinley Bros. Drug Co., Fourth and Washington streets.

Seeress Once Predicted German Empire Would Be Formed in 1871.

(By the International News Service.) London, Oct. 10.—A remarkable story of a gypsy prophecy, which may have influenced the course of history, was related here today by a retired diplomatist. In the summer of 1899, he said, he was sitting with the present German foreign secretary, Herr von Jagow, who was then a secretary of the German embassy at Rome. They were on the balcony of the embassy. In the course of conversation, Herr von Jagow expressed the belief that no general European war was likely to occur before the end of 1913. He gave as his reason the influence of a prophecy made to the kaiser's grandfather, Prince William of Prussia, at Mainz in 1849. Prince William of Prussia, who was proclaimed German emperor at Versailles on January 18, 1871, was in 1849 wandering incognito in the Rhine provinces, attended only by an aide-de-camp. He had incurred great unpopularity by his attitude during the Berlin revolution of March, 1848, and had been obliged to spend some time in England when he returned, still a semi-fugitive, to the Rhineland. What the Gypsy Said. At Mainz a gypsy woman offered to tell him his fortune and addressed him as "Imperial majesty." Not a little amused—for at that moment his chance of succeeding to the throne of Prussia seemed slight—the prince asked, "Imperial majesty, and of what empire, pray?" "Of the new German empire," was the reply. "And when is this empire to be formed?" he inquired. The woman took a scrap of paper and wrote on it the year 1849. Then she placed the same figures in column beneath: 1849, 1, 8, 4, 9, and adding them together obtained the total, 1871. "And how long am I to rule over this empire?" asked Prince William again. The woman repeated the arithmetic operation, taking the number 1871, and adding the same figures in column—1871, 1, 8, 7, 1, which gave the result, 1849. Astonished by her confidence, the prince then asked: "And how long is this fine empire to last?" Then the woman, repeating the figures, 1849, 1, 8, 8, 8, obtained the result, 1913.

58 of My Highest Priced Pianos, Etc.

Must Go Monday, and That Ends It

Just One More Day---The Store Is Rented

HURRY

Every Piano must be moved tomorrow, Monday night, by 12 o'clock. I have been ordered to get out. We will deliver Pianos all night if necessary.

New Pianos

\$97.20 FOR \$250 VALUES. Only two left; take them at \$75 or \$80. New Of course they are new. All others equally low. GRANDS—Grand pianos now for less than the same quality uprights would cost at any other time: \$700 values now \$337, \$800 values now \$446 and \$950 values now \$518, all old, reliable, established makes. Also many other pianos not listed here, and I want to say to you right now that you can secure almost any make of piano you desire.

There Are 850 Player Pianos for Only \$188

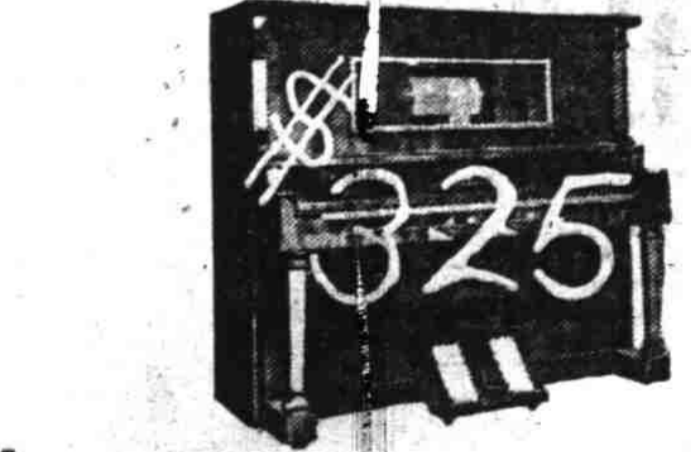
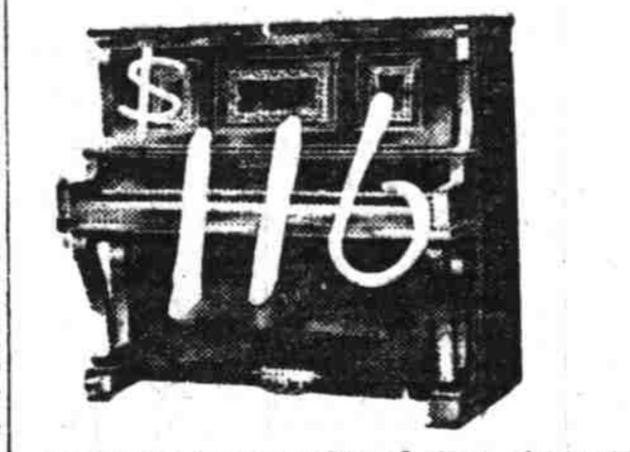
Late 88-note. Of course used, but you could hardly tell it. Many others—new ones, \$700 to \$850 values, \$287, \$387, \$437. Upright and grand pianos equally low. Several \$250 new upright pianos, \$90.



ANGELUS PIANO PLAYER PIANOS \$275 WHAT WILL YOU GIVE? ANY PRICE, ANY TERMS EVERY PIANO ALSO 58 OF THE HIGHEST PRICED PIANOS MADE MUST BE SOLD TOMORROW, MONDAY, BY 12 O'CLOCK MONDAY NIGHT



That Truck or the Others, Including Wagons of Many Kinds and Descriptions, Must Move 58 Pianos Somewhere Tomorrow Night at 12 o'clock.



We have a large number of these pianos we have been holding on special sale for \$145 to \$185. Some of them are even more than \$400 regular values. To clean them out they go at \$116 each.

A number of special Mission cases, not only in player pianos, but upright pianos as well—old reliable makes, too. For desperate will take any price I can get. Not a piano must be left unsold tomorrow night.

Here are a lot of player pianos for which we have been asking \$400 and \$500, \$750 and \$900 values. Now we clean them out at \$325.

FURTHER PARTICULARS—Some particular values we have left to offer at whatever they will bring; \$950 Weber Pianola Piano \$527. This is the finest and best ever made by the Aeolian Company; also a \$1500 combination of Lester Grand with Pianola, \$666; \$500 Combination Burmeister-Pianola, \$218; \$600 to \$700 Kingsbury Player Piano, 88-note, now, \$335. Come Monday—What will you give.



Here is a Weber Pianola Piano that regularly sells for \$1000. We have been asking \$527. Now come in and make us an offer. It's exactly like the newest. We have also some Stock Pianos, Burmeister Pianos and lots of others. Some player pianos for even \$150 to \$170. Of course they are 88-note. Who would want to buy a 66-note player? However, we have some specially constructed 88-note players that can easily be changed to 88-note.

HERE IS THE LAST CALL! I paid Dr. Brown his rent to Monday night at 12 o'clock. No more. Even if I am obliged to sell every piano for \$25 or less. I am going to sell pianos Monday (tomorrow) at anything they will bring—\$48, \$68, \$87—and all the \$250 new pianos, worth that on any market, now \$90 each—yes \$70 or \$75! All others equally low. Many of the highest-grade Pianos, Player Pianos and Baby Grand Pianos at a price you won't believe.

But Remember, This Is the Last Call. Everything Must Be Sold by 12 o'clock Tomorrow Night The Sale Soule Bros. Failure Under Authority of Order of the Court C. E. LUCORE Agent and Creditors' Representative. 388 Morrison