

PORTLAND, OREGON, SUNDAY MORNING, OCTOBER 11, 1914.

ROCK DELIVERISE TO BEGIN TOMORROW AT THE NORTH SIDE JETTY

Work to Be Resumed Following Passage of Rivers and Harbors Measure.

\$1,000,000 IS AVAILABLE

Columbia Contract Company Plans to Deliver 4000 Tons of Stone at Jetty Each Day.

After a delay which lasted most the summer, rock will again be delivered at the North Jetty commencing tomorrow morning.

With \$1,000,000 available for the building of the jetty, the work can now be pushed through the entire winter.

The plans of the Columbia Contract Company and the U. S. engineer corps call for the delivery of 4000 tons of rock a day.

Unless the German cruisers suddenly switch the scene of their endeavors to the north Pacific, the British steamer Den of Airle will be in Portland again by the last of the month.

When the European war broke out the British steamer Monmouthshire, Merionethshire and Den of Airle were in the Orient, and were ordered to state there till the north Pacific was cleared of hindrances to their safety.

Two days before that time the British steamer Merionethshire, departed from Yokohama, also bound for this port.

Both should reach here about the same time.

When the European war broke out the British steamer Monmouthshire, Merionethshire and Den of Airle were in the Orient, and were ordered to state there till the north Pacific was cleared of hindrances to their safety.

Two days before that time the British steamer Merionethshire, departed from Yokohama, also bound for this port.

Both should reach here about the same time.

When the European war broke out the British steamer Monmouthshire, Merionethshire and Den of Airle were in the Orient, and were ordered to state there till the north Pacific was cleared of hindrances to their safety.

Two days before that time the British steamer Merionethshire, departed from Yokohama, also bound for this port.

Both should reach here about the same time.

When the European war broke out the British steamer Monmouthshire, Merionethshire and Den of Airle were in the Orient, and were ordered to state there till the north Pacific was cleared of hindrances to their safety.

Two days before that time the British steamer Merionethshire, departed from Yokohama, also bound for this port.

Both should reach here about the same time.

When the European war broke out the British steamer Monmouthshire, Merionethshire and Den of Airle were in the Orient, and were ordered to state there till the north Pacific was cleared of hindrances to their safety.

Two days before that time the British steamer Merionethshire, departed from Yokohama, also bound for this port.

Both should reach here about the same time.

When the European war broke out the British steamer Monmouthshire, Merionethshire and Den of Airle were in the Orient, and were ordered to state there till the north Pacific was cleared of hindrances to their safety.

Two days before that time the British steamer Merionethshire, departed from Yokohama, also bound for this port.

Both should reach here about the same time.

When the European war broke out the British steamer Monmouthshire, Merionethshire and Den of Airle were in the Orient, and were ordered to state there till the north Pacific was cleared of hindrances to their safety.

Two days before that time the British steamer Merionethshire, departed from Yokohama, also bound for this port.

Both should reach here about the same time.

When the European war broke out the British steamer Monmouthshire, Merionethshire and Den of Airle were in the Orient, and were ordered to state there till the north Pacific was cleared of hindrances to their safety.

Two days before that time the British steamer Merionethshire, departed from Yokohama, also bound for this port.

Both should reach here about the same time.

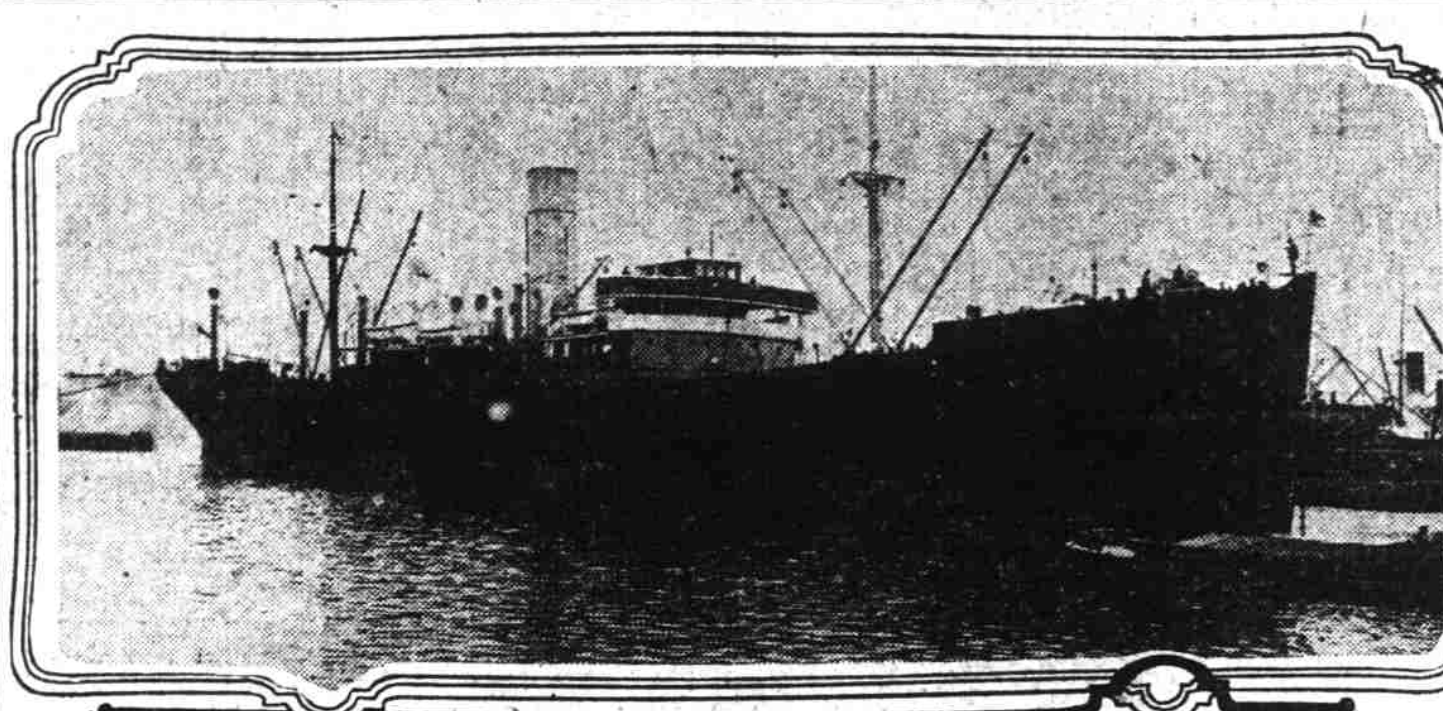
When the European war broke out the British steamer Monmouthshire, Merionethshire and Den of Airle were in the Orient, and were ordered to state there till the north Pacific was cleared of hindrances to their safety.

Two days before that time the British steamer Merionethshire, departed from Yokohama, also bound for this port.

Both should reach here about the same time.

When the European war broke out the British steamer Monmouthshire, Merionethshire and Den of Airle were in the Orient, and were ordered to state there till the north Pacific was cleared of hindrances to their safety.

ROYAL MAIL LINER IS ENROUTE FROM THE ORIENT



British steamer Den of Airle. Two days before that time the British steamer Merionethshire, departed from Yokohama, also bound for this port.

Both should reach here about the same time. When the European war broke out the British steamer Monmouthshire, Merionethshire and Den of Airle were in the Orient, and were ordered to state there till the north Pacific was cleared of hindrances to their safety.

Two days before that time the British steamer Merionethshire, departed from Yokohama, also bound for this port. Both should reach here about the same time.

When the European war broke out the British steamer Monmouthshire, Merionethshire and Den of Airle were in the Orient, and were ordered to state there till the north Pacific was cleared of hindrances to their safety.

Two days before that time the British steamer Merionethshire, departed from Yokohama, also bound for this port. Both should reach here about the same time.

When the European war broke out the British steamer Monmouthshire, Merionethshire and Den of Airle were in the Orient, and were ordered to state there till the north Pacific was cleared of hindrances to their safety.

Two days before that time the British steamer Merionethshire, departed from Yokohama, also bound for this port. Both should reach here about the same time.

When the European war broke out the British steamer Monmouthshire, Merionethshire and Den of Airle were in the Orient, and were ordered to state there till the north Pacific was cleared of hindrances to their safety.

Two days before that time the British steamer Merionethshire, departed from Yokohama, also bound for this port. Both should reach here about the same time.

When the European war broke out the British steamer Monmouthshire, Merionethshire and Den of Airle were in the Orient, and were ordered to state there till the north Pacific was cleared of hindrances to their safety.

Two days before that time the British steamer Merionethshire, departed from Yokohama, also bound for this port. Both should reach here about the same time.

When the European war broke out the British steamer Monmouthshire, Merionethshire and Den of Airle were in the Orient, and were ordered to state there till the north Pacific was cleared of hindrances to their safety.

Two days before that time the British steamer Merionethshire, departed from Yokohama, also bound for this port. Both should reach here about the same time.

When the European war broke out the British steamer Monmouthshire, Merionethshire and Den of Airle were in the Orient, and were ordered to state there till the north Pacific was cleared of hindrances to their safety.

Two days before that time the British steamer Merionethshire, departed from Yokohama, also bound for this port. Both should reach here about the same time.

When the European war broke out the British steamer Monmouthshire, Merionethshire and Den of Airle were in the Orient, and were ordered to state there till the north Pacific was cleared of hindrances to their safety.

Two days before that time the British steamer Merionethshire, departed from Yokohama, also bound for this port. Both should reach here about the same time.

When the European war broke out the British steamer Monmouthshire, Merionethshire and Den of Airle were in the Orient, and were ordered to state there till the north Pacific was cleared of hindrances to their safety.

Queen Margaret to Load Lumber Here

Tacoma, Wash., Oct. 10.—With 4100 tons of nitrate and ore from South America, the British steamer Queen Margaret is due here Monday from the West Coast.

With general freight from Europe, the French bark Notre Dame D'Arvoue is expected here from Seattle next Tuesday.

After taking part cargo of lumber the steamer Shnyak has shifted down Sound to complete her cargo for San Francisco.

The British steamer Strathallan has been chartered by Balfour, Guthrie & Co. for grain and will come to this port for her cargo.

Steamer Yosemite, sailed at 5 p. m.—Steamer Navajo, for San Francisco; British steamer Queen Adelaide, for United Kingdom.

Oregon, Portland, Oct. 10.—Sailed at midnight—Steamer Quillan, for Portland and way ports.

Steamer Yosemite, sailed at 5 p. m.—Steamer Navajo, for San Francisco; British steamer Queen Adelaide, for United Kingdom.

Oregon, Portland, Oct. 10.—Sailed at midnight—Steamer Quillan, for Portland and way ports.

Steamer Yosemite, sailed at 5 p. m.—Steamer Navajo, for San Francisco; British steamer Queen Adelaide, for United Kingdom.

Oregon, Portland, Oct. 10.—Sailed at midnight—Steamer Quillan, for Portland and way ports.

Steamer Yosemite, sailed at 5 p. m.—Steamer Navajo, for San Francisco; British steamer Queen Adelaide, for United Kingdom.

Oregon, Portland, Oct. 10.—Sailed at midnight—Steamer Quillan, for Portland and way ports.

Steamer Yosemite, sailed at 5 p. m.—Steamer Navajo, for San Francisco; British steamer Queen Adelaide, for United Kingdom.

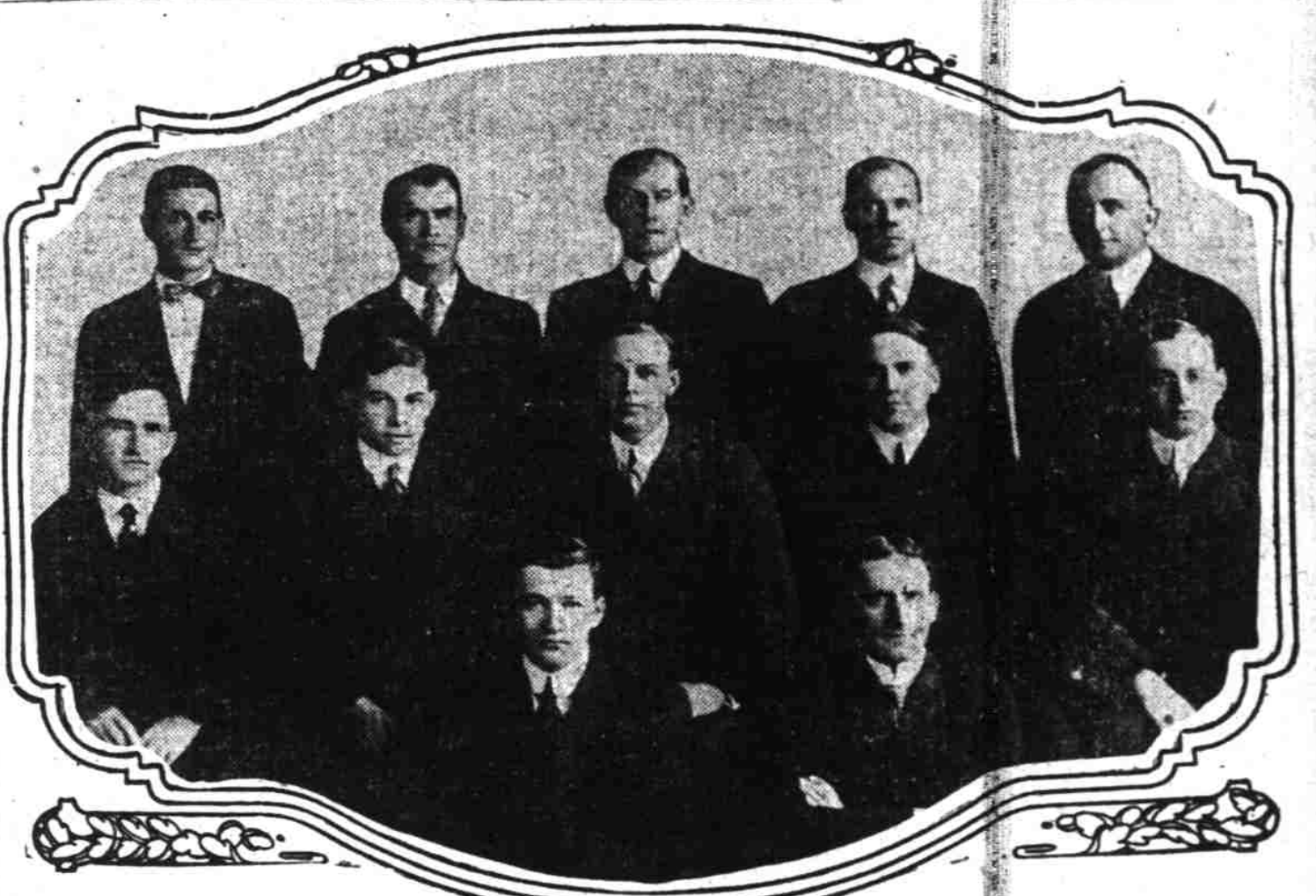
Oregon, Portland, Oct. 10.—Sailed at midnight—Steamer Quillan, for Portland and way ports.

Steamer Yosemite, sailed at 5 p. m.—Steamer Navajo, for San Francisco; British steamer Queen Adelaide, for United Kingdom.

Oregon, Portland, Oct. 10.—Sailed at midnight—Steamer Quillan, for Portland and way ports.

Steamer Yosemite, sailed at 5 p. m.—Steamer Navajo, for San Francisco; British steamer Queen Adelaide, for United Kingdom.

RAILROAD MEN'S DAY WILL BE BIG FEATURE AT LAND PRODUCTS SHOW



General committee in charge of Transportation Day at the Manufacturers and Land Products Show. Top, left to right—A. W. Hawkins, Harriman club; E. M. Welch, Harriman club; Hood Bottler, Harriman club; H. C. Kendall, Made in Oregon Club of the Portland Railway, Light & Power company.

Middle, left to right—C. H. Savage, Portland Railway, Light & Power company; C. C. Coleman, Transportation club; Roy W. Keel, Harriman club and general chairman of the day; F. H. Hocken, Transportation club; P. H. Cremer, Harriman club.

Bottom—George W. McMath, president Harriman club; W. Merriman, president Transportation club. Transportation day at the Manufacturers and Land Products show...

Music will be a feature of the night parade and it will bring out for public approval for the first time the band of the Portland Railway, Light & Power company.

The Harriman club took to Salem for the state fair the largest excursion ever to leave Portland. The members of this club plan to turn out in great numbers for the land show feature and will no doubt have more than 1000 men in line.

The parade of the transportation men will start promptly at 7:30 p. m. and will pass through the downtown streets to the Armory, where there is to be a program to be followed by a dance.

The details of the day's program. Transportation day is bound to be a winner, said Chairman Keel yesterday. The members of the transportation club, the Harriman club and the employees of the Portland Railway, Light & Power company are enthusiastic over their part in the big exposition and we hope to have a parade over the streets of the city that will show we are among the live organizations of the city.

The parade committee consists of H. C. Kendall as chairman, with C. H. Savage, J. I. Werlein, C. H. McGirr, W. D. Wells, F. D. Hunt, E. M. Welch and J. H. Deuson as assistants. The program committee has as its chairman D. C. Freeman, with E. M. Ringer, E. A. West, J. H. Deuson and George Houghton as assistants.

Other organizations to have special days at the land products show are at work on special programs. The Ad club, as well as the Progressive Business Men's league, will attend the exposition in a body, as will many social, business and fraternal organizations of the city.

The Retail Grocers association will have a special day at the show and the members of the Rotary club have accepted the invitation to put on a special program.

When You Hear That Dinner Bell Does Your Mind Go Back to the Days When You Could Eat Like a Farm Hand?

The memory of an appetite is a wonderful thing. The loss of stomach power leaves a man unable to eat as one of our good old-fashioned food—that condition is pitiful. Why can't you realize the thousands of others have demonstrated?

LAST VOYAGE OF SEASON

Steamer This Morning. (Special to The Astorian) Seattle, Oct. 11.—On her last voyage this year to Bering sea, the Pacific Coast Steamship company's liner Steamer, Captain T. H. Cann, will start from Seattle at 10 o'clock tomorrow morning.

The vessel will have about a dozen passengers but a full cargo of freight.

There were four sailings for southeastern Alaska tonight, the steamships Jefferson, Alki, Northland and Spokane all getting away for the north.

The Jefferson, Alki and Spokane have light passenger lists and heavy cargoes and the Northland freight only.

The Matsun liner Hyages got away tonight for Hawaii with a cargo of 8000 tons of cement for Pearl Harbor.

The ship will be in the Commercial club building tomorrow afternoon at 4 o'clock.

Merchants and friends of the line are urged to attend and join in the plans for the betterment of the service.

BETTER SERVICE PLANNED

For the consideration of plans for the improvement of the service and steamers of the Portland Steamship company's Alaska line a meeting of stockholders is to be held at the chamber of commerce in the Commercial club building tomorrow afternoon at 4 o'clock.

NEWS OF THE PORT

Yellowstone, Arrived, October 10. (Special to The Astorian) Freight, Coos Bay and San Francisco, Arrow line.

William F. Herra, Am. str., Captain Engalis, bulk oil, Monterey, Standard Oil Co., San Francisco, arrived at 11:15 p. m. Steamer Yellowstone, freight, New York, American-Hawaiian.

Departures, October 10. Northland, Am. str., Captain Lodge, passengers and freight, San Francisco, Arrow line.

Information about this port can be secured from the Chamber of Commerce, Phones A. 1238, or MAIN 983.

PASSENGERS AND FREIGHT

Name From Date Breakwater Coos Bay Oct. 14 Geo. W. Elder Eureka & way Oct. 16

Freight Only. Montanan N. Y. Oct. 17 Santa Catalina S. F. & way Oct. 17

Freight Only. Yellowstone S. F. & way Oct. 27

Steamers Due to Depart. Geo. W. Elder Eureka & way Oct. 11

Montanan N. Y. Oct. 17

Santa Catalina S. F. & way Oct. 17

Yellowstone S. F. & way Oct. 27

Freight Only. Montanan N. Y. Oct. 17

Santa Catalina S. F. & way Oct. 17

Yellowstone S. F. & way Oct. 27

Freight Only. Montanan N. Y. Oct. 17

Santa Catalina S. F. & way Oct. 17

Yellowstone S. F. & way Oct. 27

Freight Only. Montanan N. Y. Oct. 17

Santa Catalina S. F. & way Oct. 17

Yellowstone S. F. & way Oct. 27

Freight Only. Montanan N. Y. Oct. 17

Santa Catalina S. F. & way Oct. 17

Yellowstone S. F. & way Oct. 27

Freight Only. Montanan N. Y. Oct. 17

Santa Catalina S. F. & way Oct. 17

Yellowstone S. F. & way Oct. 27

Freight Only. Montanan N. Y. Oct. 17

Santa Catalina S. F. & way Oct. 17

Yellowstone S. F. & way Oct. 27

Freight Only. Montanan N. Y. Oct. 17

Santa Catalina S. F. & way Oct. 17

Yellowstone S. F. & way Oct. 27

Freight Only. Montanan N. Y. Oct. 17

Santa Catalina S. F. & way Oct. 17

Yellowstone S. F. & way Oct. 27

Freight Only. Montanan N. Y. Oct. 17

Santa Catalina S. F. & way Oct. 17

Yellowstone S. F. & way Oct. 27

Freight Only. Montanan N. Y. Oct. 17

Santa Catalina S. F. & way Oct. 17

Yellowstone S. F. & way Oct. 27

Freight Only. Montanan N. Y. Oct. 17

Santa Catalina S. F. & way Oct. 17

Yellowstone S. F. & way Oct. 27

Freight Only. Montanan N. Y. Oct. 17

Santa Catalina S. F. & way Oct. 17

Yellowstone S. F. & way Oct. 27

Freight Only. Montanan N. Y. Oct. 17

Santa Catalina S. F. & way Oct. 17

Yellowstone S. F. & way Oct. 27

Freight Only. Montanan N. Y. Oct. 17

Santa Catalina S. F. & way Oct. 17

Yellowstone S. F. & way Oct. 27

Freight Only. Montanan N. Y. Oct. 17

Santa Catalina S. F. & way Oct. 17

Yellowstone S. F. & way Oct. 27

Freight Only. Montanan N. Y. Oct. 17

Santa Catalina S. F. & way Oct. 17

Yellowstone S. F. & way Oct. 27

Freight Only. Montanan N. Y. Oct. 17

Santa Catalina S. F. & way Oct. 17

Yellowstone S. F. & way Oct. 27

Freight Only. Montanan N. Y. Oct. 17

Santa Catalina S. F. & way Oct. 17

Yellowstone S. F. & way Oct. 27

Freight Only. Montanan N. Y. Oct. 17

Santa Catalina S. F. & way Oct. 17

Yellowstone S. F. & way Oct. 27

Freight Only. Montanan N. Y. Oct. 17

Santa Catalina S. F. & way Oct. 17

Yellowstone S. F. & way Oct. 27

Freight Only. Montanan N. Y. Oct. 17

Santa Catalina S. F. & way Oct. 17

Yellowstone S. F. & way Oct. 27

Freight Only. Montanan N. Y. Oct. 17

Santa Catalina S. F. & way Oct. 17

Yellowstone S. F. & way Oct. 27

Freight Only. Montanan N. Y. Oct. 17

Santa Catalina S. F. & way Oct. 17

Yellowstone S. F. & way Oct. 27

Freight Only. Montanan N. Y. Oct. 17

Santa Catalina S. F. & way Oct. 17

Yellowstone S. F. & way Oct. 27

Freight Only. Montanan N. Y. Oct. 17

Santa Catalina S. F. & way Oct. 17

Yellowstone S. F. & way Oct. 27

Freight Only. Montanan N. Y. Oct. 17

Santa Catalina S. F. & way Oct. 17

Yellowstone S. F. & way Oct. 27

Freight Only. Montanan N. Y. Oct. 17

Santa Catalina S. F. & way Oct. 17

Yellowstone S. F. & way Oct. 27

Freight Only. Montanan N. Y. Oct. 17

Santa Catalina S. F. & way Oct. 17

Yellowstone S. F. & way Oct. 27

Freight Only. Montanan N. Y. Oct. 17

Santa Catalina S. F. & way Oct. 17

Yellowstone S. F. & way Oct. 27

Freight Only. Montanan N. Y. Oct. 17

Santa Catalina S. F. & way Oct. 17

Yellowstone S. F. & way Oct. 27

Freight Only. Montanan N. Y. Oct. 17

Santa Catalina S. F. & way Oct. 17

Yellowstone S. F. & way Oct. 27

Freight Only. Montanan N. Y. Oct. 17

Santa Catalina S. F. & way Oct. 17

Yellowstone S. F. & way Oct. 27

Freight Only. Montanan N. Y. Oct. 17

Santa Catalina S. F. & way Oct. 17

Yellowstone S. F. & way Oct. 27

Freight Only. Montanan N. Y. Oct. 17

Santa Catalina S. F. & way Oct. 17