

DUMPING OF GARBAGE WILL NOT COMMENCE IN GULCH TILL FALL

Commissioner Daly Believes Rainy Season Better Than Warm Weather for Start.

PLANT DOING GOOD WORK

Incinerator on Guild's Lake Caring for All Garbage That Is Being Collected Now.

Believing that the rainy season will be much better than warm weather to experiment with the plan of disposing of garbage by dumping it into gulches...

This means that the new scheme is not to be tried until this fall and the establishment of a municipal garbage collection system until some time later.

120 Wagons Used. At present the incinerating plant on Guild's lake operated by the city is caring for all of the garbage collected...

There are 120 wagons owned privately which are now used to collect the garbage and refuse and practically all of it is delivered to the plant.

Will Prosecute Violators. Owing to a number of complaints made to the city...

On June 8, 1911, the people by initiative measure authorized a bond issue of \$75,000 for the establishment of a garbage collection system.

In November, a year later, when it was found that the present incinerator was overloaded...

Big Saving Assured. According to Mr. Daly the dumping plan would be much preferable than using a second incinerator...

"The garbage collection system," says Mr. Daly, "is entirely dependent on a proper disposing system."

Plan Works in Seattle. The dumping of garbage and covering it over with earth...

"These dumps can be located in various sections of the city, while an incinerator will be in one spot."

"It will cost easily \$25,000 a year for interest on the \$100,000 incinerator once they are issued."

Bought at a Bargain. Baltimore American. "Your neighbor, Mrs. Comeau, has so much sewer fare."

"Then, I bet she got it at a cheap bargain place."

MUTUAL INTERESTS OF FARMER AND MANUFACTURER SEEN IN POSTER DESIGN



Manufactures and Land Products Show poster drawn by Fred A. Routledge which has been accepted as the official design.

From poster designs submitted by more than a dozen artists, the management of the Manufacturers' and Land Products Show has accepted the poster drawn by Fred A. Routledge...

Thousands of lithographs will be made from this design and these will be distributed throughout Oregon and Washington...

Big Success Assured. That the show to be held October 26 to November 14 will be a big success from the standpoint of the manufacturer and producer is indicated by the demands for space...

COLUMBIA HIGHWAY IN CLASS BY ITSELF, SAYS SAMUEL HILL

Scenic Effect Unsurpassed and Road Making Efficient, Asserts Expert.

"There will never be another road built like the Columbia highway, and I wish you would get that in your mind."

"The main purpose of the trip was to take Mr. Terrance to the address he delivered before the Hood River county farmers at Parkdale last night in advocacy of the \$75,000 road bond issue pending in that county."

"I wanted Mr. Terrance to see the road," said Mr. Hill, "and I also wanted to confirm some impressions I received July 8 when I went over the route with R. H. Thomson, former city engineer of Seattle."

"Mr. Thomson's views coincided with the best informed men that nothing should be done in the way of surfacing the road this fall, nor should travel be permitted on it under any

success of the venture from the standpoint of the public will be equally good as indicated by responses from business men and representatives of the various organizations that have been asked to help.

Without exception the letters that have been reaching President David M. Dunne and Secretary Louis W. Buckley are full of encouraging sentiments.

Committees having charge of various features of the show will hold meetings this week to canvass the situation and outline definite plans.

That the show to be held October 26 to November 14 will be a big success from the standpoint of the manufacturer and producer is indicated by the demands for space...

NIGHT BLOOMING SPECIES OF CACTUS MAKES DEBUT

Rare Kind of Plant Flowers at Intervals Years Apart, Always at Night.

A night blooming cactus plant owned by Mr. and Mrs. J. Thorburn Ross came into bloom at their residence, 590 Main street, last Thursday night, for the first time since it has been in their possession.

"The night blooming cactus is a species of cactus and is more or less of a botanical rarity, blooming at odd intervals years apart and always at night. It is intensely fragrant and lasts but a few hours."

"Our plant is quite small," said Mrs. Ross yesterday in describing it. "It looks like an ordinary cactus and has no beauty in itself. As far as is known it has not bloomed before in 10 years."

conditions. He thought it should be hard surfaced early next year. The quantity of rock could be easily obtained along the Columbia river, which, if properly mixed with asphaltic California oil, would, he thought, furnish the best surface.

State Historical Society and the Chamber of Commerce.

Acceptance of appointments on the honorary advisory board, announced last week, are being received at the headquarters in every mail.

Tables prepared by Mr. Williams indicate that the greatest populations are best sustained in other countries in attitude similar to that of the Columbia basin.

Streams Are Measured. He submits a very complete statement of the measurement of the flow of water in Oregon and the potential hydro-electric energy.

Mr. Williams also suggests that reasonable artificial application of water in the cultivation of logged-over lands will be profitable.

For retail dealers there has been inventing in reaching to unreel wire netting, measure it and reel the amount sold to a customer in a compact package.



Cereus plant, which flowers only at night. (Photograph by Emil Schultz).

ing and remained stationary until 11:30, when it measured nine inches across. At an early hour next morning its glory had departed and only a sad looking, drooping bud remained to remind one of the transient glory that had passed.

The Ross residence was the Mecca of friends and neighbors during the course of the whole evening, many coming again and again to see the rare bloom.

Mrs. Ida Marstons W. C. T. U. President. Roseburg, Or., July 11.—The eighteenth annual convention of the Women's Christian Temperance Union of Douglas county came to a close today after what was voted the most interesting meeting in the history of the organization.

COLUMBIA AND PUGET SOUND DISTRICTS ARE BASE FOR COMMERCE

Nature Has Endowed Localities With Wonderful Advantages, Says Expert.

CLOSE STUDY IS MADE

Harrison Williams of Portland Finds Great Future for Northwest Because of Many Advantages.

Harrison Williams of 660 Halsey street, a veteran resident of Portland, has made an analytical and comparative study of Pacific coast cities which has led him to this conclusion: "Nature has endowed the Columbia and Puget sound section with the essential elements of commercial supremacy on this coast, and I confidently predict that this portion of the coast will become the commerce of the Pacific ocean what the section of the Atlantic between Boston and Philadelphia is to the commerce of the Atlantic ocean."

Mr. Williams' study is exhaustive. He explained yesterday why he had done the work.

Experts Are Unsurpassed. "Oregon people need but to know the facts of their state to be optimistic about it and enthusiastic for it," he said. "I hope to see my work published in pamphlet form for general distribution less through co-operation with the commercial club and the Development League and have already had the proposition favorably before representatives of these organizations. I seek for no personal profit."

"Midway between Mexico and Alaska nature has endowed the west coast of North America with a seaport situation unsurpassed if not unequalled by any other situation of its kind in the world," reads an introductory comment.

"The great Columbia river, the largest river on the Pacific coast, its navigable capacity and depth of water, of the harbor at the mouth of the Mersey; and this bay is separated from the Columbia, inside the bar, by a neck of land only two or three miles across."

Willapa Bay Ideal. "At Willapa bay is the possibility of a harbor of the character, as regards capacity and depth of water, of the harbor at the mouth of the Mersey; and this bay is separated from the Columbia, inside the bar, by a neck of land only two or three miles across."

"These two countries may easily have 200,000 inhabitants at the close of this century."

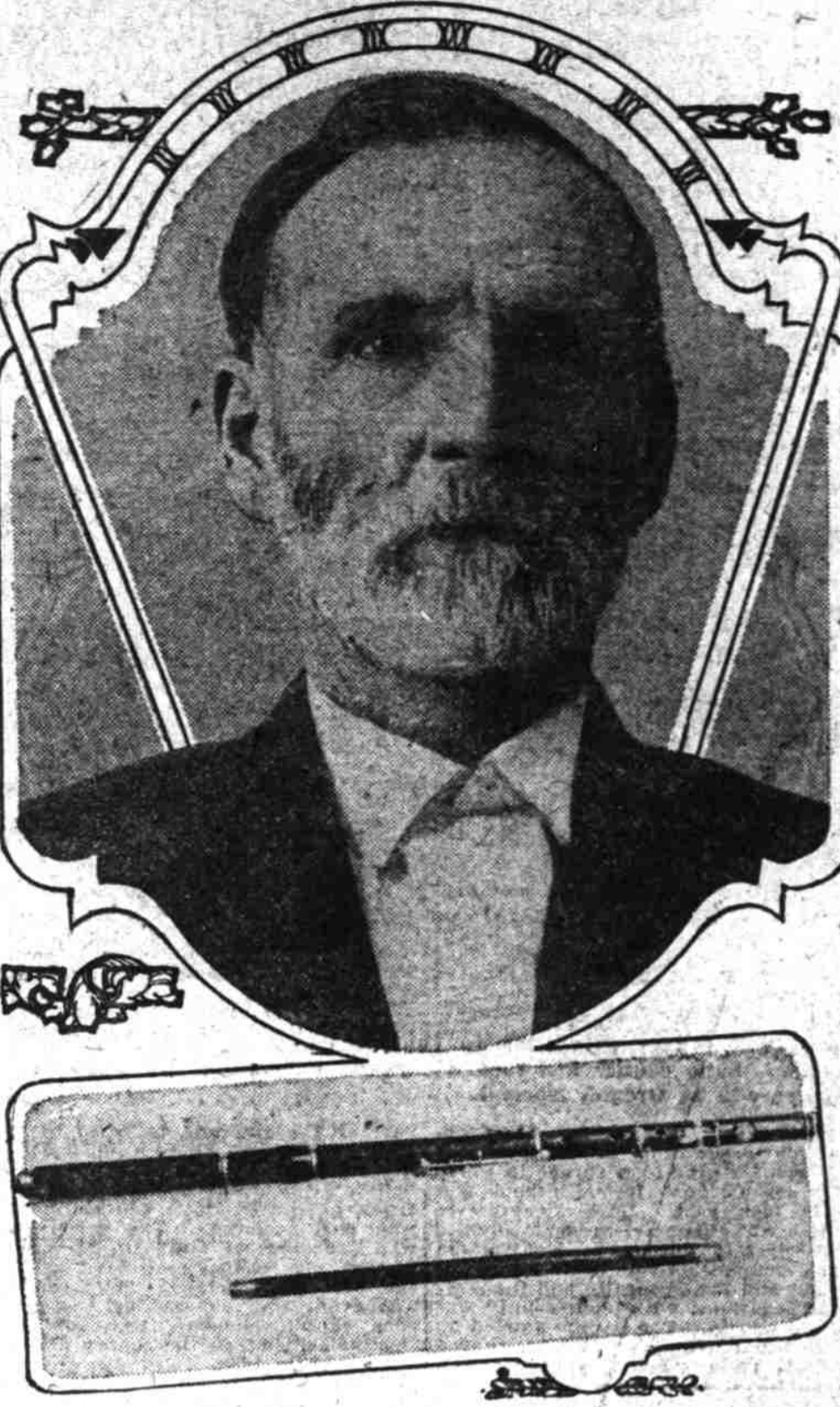
Regarding accessibility, the Columbia passage through the Cascade range provides a water-level route for several railroads.

He submits a very complete statement of the measurement of the flow of water in Oregon and the potential hydro-electric energy.

Mr. Williams also suggests that reasonable artificial application of water in the cultivation of logged-over lands will be profitable.

For retail dealers there has been inventing in reaching to unreel wire netting, measure it and reel the amount sold to a customer in a compact package.

MAJ. KELLOGG AND HIS WIFE ON THE MARCH TO THE SEA



Top—Major John Ruark Kellogg. Bottom—Major Kellogg's Civil war rifle and flute.

By J. B. H.

At the Kellogg home near La Grande there were for 40 years or more a historical rifle and flute which accompanied General Sherman on his march to the sea. They were the property of John R. Kellogg, fifer major under General Sherman.

After the war was over and the soldiers returned to their homes, the rifle and flute were set aside except on special occasions, when the fifer led the drum corps.

A True Artist. Major Kellogg was a rare artist of unusual talent.

Major Kellogg was a rare artist of unusual talent. He was a musician and a soldier.

Major Kellogg was a rare artist of unusual talent. He was a musician and a soldier.

Evinrude Row Boat Motors

For Row Boats, Canoes and Motor Boats. In Use by the United States Government. In Use by 13 Great Foreign Governments.

The Evinrude motor is not a toy. The fact that fourteen governments are using them is convincing proof of the Evinrude is one of the most wonderful engines of its kind in the world.

We wish to warn the public against accepting inferior machines, which are not Evinrudes, but which are only makeshifts.

Evinrude Motor Co.

184 Morrison Street F. G. Epton, Dist. Sales Mgr.

GOETHALS PERMITTED TAKING OF PICTURES IS FIELD'S DEFENSE

Editor of Sunset Claims Photographs of Panama Fortifications Authorized.

HEARING IS POSTPONED

Published Article to Call Attention to United States' Lack of Military Air Fleet.

(Collected Press Leased Wire.) San Francisco, July 11.—When Editor Charles K. Fields of the Sunset magazine, Aviator Robert G. Fowler, Photographer Ray A. Duhem and Wiley A. Scott, aerial bomb expert and author, are placed on trial for revealing secrets of aviation, he declared he had conclusively shown the canal could be destroyed from the air unless precautions were taken against it.

On their arraignment before United States Commissioner Krull here today, District Attorney Preston charged that Fowler made an airplane ascent over the canal fortifications, that Duhem took photographs of them, that Scott wrote an article concerning them and that Fields published article and pictures in the April issue of his magazine.

Preston offered no evidence beyond a copy of the magazine itself. By consent the case went over until Aug. 10. Fields explained that he published the article because he considered it editorial and hoped it would lead congress to appropriate more money for military aviation.

District Attorney Preston intimated that if the defense proved its assertions concerning the war department and Goethals the cases might not be pressed very far.

Attorney H. C. Booth appeared for Fields, Norman Eisner and Leopold Oppenheimer for Fowler, G. F. Cooby for Duhem and Scott, handled his own case. None of the defendants seemed much worried.

Suicide Bequeaths Her Body, Williamsport, Pa., July 11.—Leaving a note to the coroner bequeathing her body to the cause of science, Mrs. Helen L. Owens, aged 57, of Los Angeles, committed suicide here this afternoon by attaching a rubber hose to a gas jet and placing the other end in her mouth while she lay in bed.

Recently Major Kellogg's wife and flute were presented to one of his boys who was at one time a hired hand on the Kellogg farm, but who is at present one of the professors at Corvallis. The instruments have been thoroughly repaired by a prominent Portland music store and it is the intention of the present owner to place them eventually in the keeping of the Oregon Historical society for preservation.

A Resort in Summer The Portland

Spend the fresh morning hours or long dream-like afternoons on the cool, wide verandas overlooking the courtyard, with its garb of pink and green.

Enjoy to the full the convenience of the perfectly-appointed guest-rooms, of writing and rest-rooms, of parlor and lobby.

Revel in the perfect menus devised by the chef, both to tempt and appease your Summer appetite.

Breakfast, 6:30 to 12:00. Weekday Luncheon, 11:30 to 2:00. Afternoon Tea, 3:30 to 6:00. Table d'Hote Dinner, 5:30 to 8:00. Service in Grill to 1:00 A. M.

Music in Dining Room During Dinner Hours. Music in Grill Afternoon and Evening.

The Portland Hotel

G. J. KAUFMANN, Manager

Rupture Is Curable

By wearing a SEELEY SPERMATIC SHIELD TRUSS. No waiting or danger of an operation. This SEELEY SPERMATIC SHIELD TRUSS closes this opening in 10 days in most cases. If you can't come, write for measuring blank and literature. Sold only by LAURENCE DEUS, 606 Third and Yamhill Streets, Portland, Oregon, who are State agents and exclusive State Agents for this appliance. If you can't come, write for descriptive literature. Railway fare free one way up to \$3 if you buy one of these appliances.