

### QUEEN THELMA OPENS GORGEOUS GARDEN IN THE FESTIVAL CENTER

Striking Exhibits of Rose Plants and Blooms Inspire Rare Enthusiasm.

### DESIGNS ARE BEAUTIFUL

Different Sections of City Via One With Another to Display Most Perfect Blooms.

At the command of her majesty, The Queen, Queen of Rosaria, one of the most beautiful gardens in Portland, The Festival Center on Sixth street, between Yamhill and Salmon, was formally opened to the public this afternoon. A thrill of delight went through the crowd that followed in her train when a first view of the paradise of blossoms and greenery was obtained.

For two blocks the entire thoroughfare is given over to blooms of every variety and shape, the cream of all the flowers which have thus far unfolded their brilliant petals in answer to the soft magic of sun and rain.

Entrance to the center is gained only at street intersections. Dividing the sidewalks from the center way are latticed fences and columns, arching down the center of the street are decorated booths wherein are exhibited blossoms, ranging from roses to tiny heliotropes, from the several districts of the city.

In preparing the displays each district has vied with every other to secure original and attractive designs with the result that a general effect has been obtained such as has never been surpassed for gorgeous splendor, in Portland.

More Than 6000 Plants. The green latticework forms a background for the display of thousands of potted plants, for the most part roses. The receptacles have been covered with moss, which gives the whole an appearance of a garden, interspersed are clusters of palms, ferns and bay trees in profusion.

More than 6000 plants go to make up the gardens and thousands upon thousands of cut flowers, which include more than 30 varieties of roses, ranging from the small Crimson Rambler and heavy red Brunner to the dainty Souper of cream and the popular white Drusicki.

The booths house exhibits from a score of districts, exclusive of the displays of florists and growers. These are arranged in all manner of effects. In one booth is seen the American flag, made of red and white roses, while larkspur provides the blue field for the stars; in another is a replica of the proposed interstate bridge, made of crimson rambler, moss and ferns. In a third booth, a large white still is seen a lake with mossy lily pads on which roses blossom amid a sea of ferns.

The first booth, on the east side of the booth, entering from Yamhill street, is occupied by the exhibit of the East Side Business Men's club, known hatched by green plants in the theme.

Designs Exceedingly Artistic. A miniature Willamette river, with tiny boats floating on its surface, is the center of the Willamette Heights exhibit. Through a mass of roses is seen a miniature copy of Mt. Hood, so arranged that it appears to be in the distance.

Queen Anne lace and a profusion of vine maple leaves form the background for the rose exhibit from Portland Heights, while the roses from Montavilla in the neighboring booth set off their brilliance against cedar boughs, ivy and ferns.

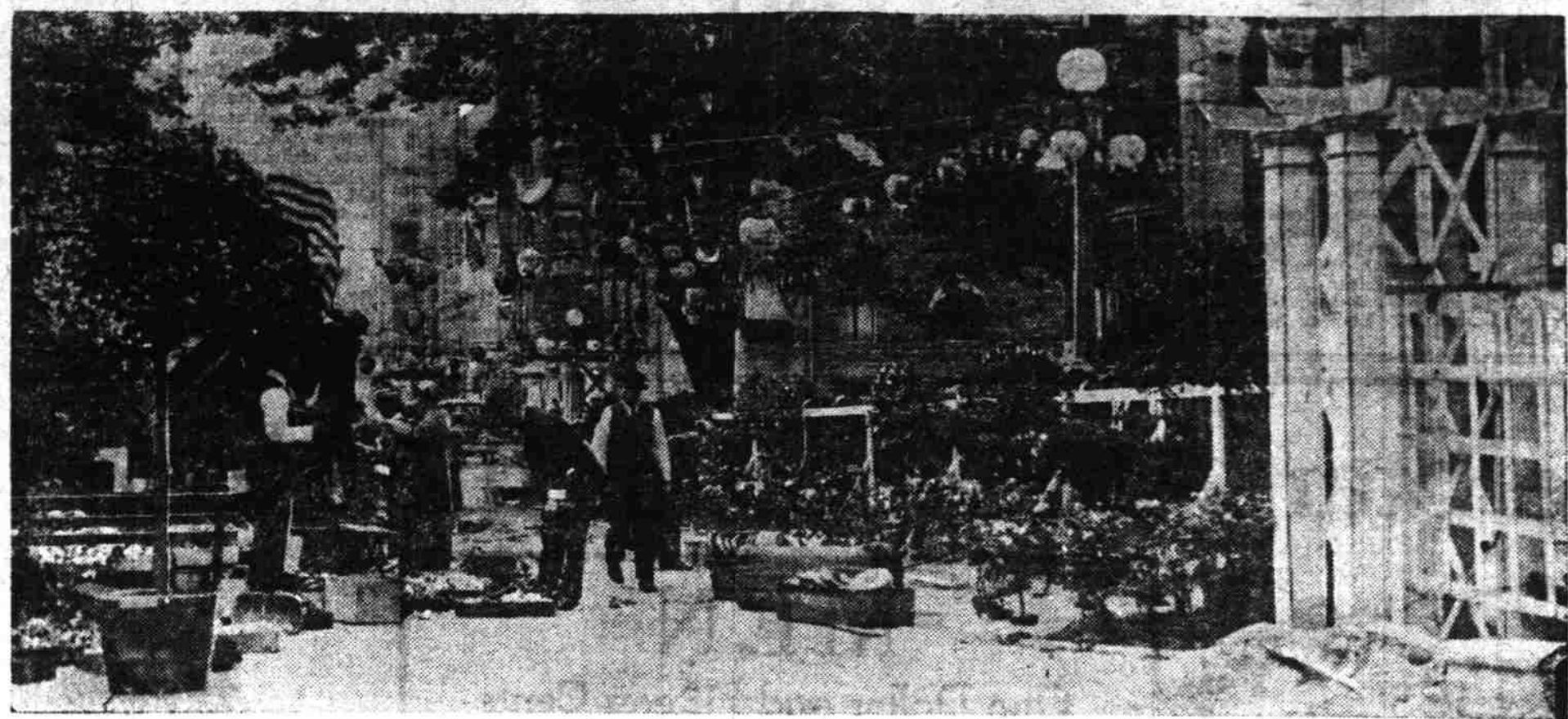
Not content with beautifying the interior of their booth, the Rose City park committee men and women have also festooned the roof above with a mass of greenery. Among the clusters of roses are found real butterflies who, lifelike, cling to the petals.

Irvington Park carries with its display a touch of home. The interior of the booth is made to represent a bungalow window with a pretty window-box filled with gorgeous blooms. Below, on tables, are prize roses, each in a vase by itself.

Crimson rambler are the central items from Irvington. Hundreds of them are massed within the booth, with contrast delightfully with the big white Drusicki's and red Brunner, and delicately shaded Lyons, and Mrs. John Langs.

A huge brass bowl filled with Gains- Rose Festival Visitors, welcome to Portland and the "Store of 100 per cent Service." Let us check your grips and parcels, use our phone, ask us questions, in short, make yourself at home in our store.

### BEAUTIFUL FESTIVAL ROSE GARDEN FORMALLY OPENED BY QUEEN OF ROSARIA



Festival center, on Sixth street, between Yamhill and Salmon.

through roses is the chief exhibit from Sellwood which is made attractive by the presence of a miniature moss lined lake. In the lake are live goldfish and back of it are ranged clusters of lilies.

A unique feature which is seen in the North Portland display is a small floral chariot, drawn by a score of big butterflies. A huge wreath of daisies forms the center of a beautiful mass of roses.

Jonesboro, the home of the East Halsey Improvement club, gives a large part of its space over to photographs of the district, but does not forget the flowers that grow there.

A huge American flag made of flowers, roses for the most part, is the sight seen in the Tabor Heights booth, Oregon grape, rambler and roses form the background.

East and Westmoreland have displays of roses in vases and more than 40 varieties of sweet peas grown from Oregon seed occupy the booth of the Oregon Sweet Pea society. Daisies, in clusters and roses in vases are included in the exhibit of the St. Johns Commercial club, while Woodlawn comes out as a champion for the Union avenue approach for the interstate bridge in its booth. Here is a miniature bridge made of crimson rambler, moss and cedar which spans a river of white roses.

Booths Illuminated at Night. Each booth is wired for electricity and the entire center is festooned with multicolored electric globes, and Japanese lanterns which at night will illumine the place.

Geraniums, roses and crimson rambler are used in profusion in the decoration of the space occupied by Bancroft Heights and Mt. Scott is represented by roses and many of them. Great hanging baskets of pink Caroline Testout roses form the principal display from Laurelhurst.

Those engaged in arranging the displays were compelled to work up to the moment scheduled for the arrival of the queen. Most of the exhibits were placed this morning and scores of men and women, from the several districts were engaged in the big task which was directed by Secretary Currier of the Rose Festival association, and Father Schooner of Brooks, the famous creator of new varieties of the queen of blossoms—The Rose.

Welcomed at Albany. Albany, Or., June 9.—The queen of Rosaria, and her royal train, were tendered a rousing reception at the Southern Pacific depot by hundreds of Albany people, headed by Mayor Currier, when they arrived here last night at 7 o'clock. As the front of the engine, decorated with bouquets of roses, came into view of the throng at the depot, shouts and yells burst from the throats of Albany's elite and humble. Ever of Albany's elite and humble, Ever of fire department turned out to greet the queen.

Queen Thelma and her maids alighted from the car and walked to a grassy plot of the depot grounds, where, with an appropriate ceremony, a rose bush was planted. Queen Thelma gave a few introductory remarks, and each one of her maids in turn addressed appropriate words. When the ceremony was over, Queen Thelma explained her mission. This was followed by a brief address of welcome by Mayor Currier, who assured the queen that Albany people would follow in her wake to the "happy land of Rosaria."

A feature of the exercises was the

presentation of a beautiful bouquet of flowers to Miss Lena Ostervold, who was indorsed by the Woodmen of the World of Portland as candidate for Rose Queen. The bouquet was presented by the local Woodmen lodge.

### Claimed He Was Guilty Little Bit

Court Declines to Accept any Half-way Confession; Assault Case Dismissed by Judge.

"I'm guilty only a little bit," replied Jacob Strawich, saloon man at Graham and Delany streets, this morning in municipal court when asked to plead guilty or not guilty to assaulting Henry Wagner, driver of a buttermilk wagon.

Wagner complained that Strawich accused him of reporting liquor had been sold on Sunday. The saloon man said Wagner had circulated such reports. Wagner denied it. The saloon man slapped the buttermilk salesman, then pushed him out the door. Patrolman Stewart came along at that moment and brought both to court. The judge dismissed the case.

AGED MINER UPON TRIAL. Simon McKee, a picturesque old mining prospector of the Siskiyou mountains is on trial in the federal court today on a charge of setting fires in the Siskiyou national forest. McKee, who is 70 years old, has a long flowing beard, wears a red bandana about his neck and dressed in overalls. Assistant United States Attorney J. J. Berkman is handling the prosecution and a number of forest service attaches are appearing against him.

Exercises at Philomath. Philomath, Or., June 9.—Rev. H. H. Haller, superintendent of the California conference of the United Brethren church, delivered the baccalaureate address to the graduating class of Philomath college Sunday. His subject was "With Whatsoever Measure Ye Measure, It Shall Be Meted to You Again." Last evening the annual address to the Y. M. C. A. and Y. W. C. A. of the college was given by Rev. Mr. Whitney of Dayton, Ohio, secretary of the home mission board of the United Brethren church.

Blank Is an Heirloom. McMinnville, Or., June 9.—Will Hutchens, a dairyman residing near this city, has in his possession an heirloom in the form of an old blank granted to his father, Thomas J. Hutchens, who was a citizen of North Carolina, an exemption from serving in the Confederate army because he was a member of the Society of Friends.

Store for Rent. Store in The Journal building, size 20x50. Ideal location for high class millinery, ladies' or gent's tailoring, florist, optician or specialty house. Reasonable rental. Long lease. Apply Journal business office.

### BEAUTIFUL BLOOMS DISPLAYED AT ROSE SHOW IN LIBRARY

Thousands of Choice Blossoms Exhibited and Judges Finish Work.

"With thousands of roses of every variety and shade clustered on long tables, the annual Rose Show of the Portland Rose society opened this afternoon in the Central library building, where virtually the entire third floor is given over to the exhibits of beautiful blooms from Portland gardens.

The displays are attractively arranged and the judges completed their work of awarding the prizes just before the doors were thrown open to the public.

The exhibit this year is one of the most comprehensive shown at any time, despite the fact that the recent hail storm played havoc with many gardens and the chances of many prize winning roses from reaching that point of perfection demanded.

The judges who passed on the various exhibits today were: J. H. Booth of Roseburg, R. G. Gamwell, Bellingham, W. E. Sherbrooke, Corvallis; Dr. S. Sulliger, Vancouver; Father Schooner, Brooks, and A. J. Clarke of Portland. They began work early this forenoon immediately after the last entry had been made.

Two big halls were necessary to house the exhibit which is divided into 13 sections and include classes ranging from a single bloom to clusters of 50 of single and mixed varieties.

The displays include these varieties: "The pink—Caroline Testout; red—Drummer; apricot—Lyon; white—Drusicki; red—Richmond; pink—Mrs. John Lang; cream—Souper; yellow Lady Hillingdon; pink—Konigan Carolina; and La France; and climbers, such as the Thousand Beauty, Mrs. Alfred Tucker, first vice president; Mrs. Thomas Gray, second vice president; Edwin Caswell, first interest; A. J. Walters, recording secretary, and R. G. Jubitz, treasurer.

Reduction in Fee Granted by Court. Lawyer Acts as "Friend" and Secures Big Out of Amount Asked in Mortgage Foreclosure Suit.

Colonel C. E. S. Wood appeared before Circuit Judge Gleason this morning and made an eloquent plea for O. A. Ploegstra and his wife, Sophia Ploegstra, which won the reduction of an attorney's fee from \$600 to \$25 allowed. The Ploegstras were sued by Carl Schiewe for foreclosure of the \$500 mortgage on their property on the Forest street drive. The mortgage draws eight per cent interest.

Ploegstra is a janitor for the Sherman Clay company, his wife is suffering from rheumatism and a daughter is crippled with paralysis. Without funds to contest the suit and with no defense Mrs. Ploegstra appealed to Colonel Wood and he took the matter up as amicus curiae or friend of the court.

Colonel Wood bitterly attacked the suit saying that even the Scotch loan companies were not foreclosing mortgages now when defaults were made and that there appeared to be a merit understanding among those loaning money not to press suits at this time because of financial conditions.

Attorney Ben Irwin, representing Schiewe, asked that he be allowed to produce witnesses touching the amount of fee equitable in the case and the hearing was set for next Monday.

Plea of Not Guilty Entered by Locator. J. W. Logan, One of So-Called Seattle Group, Will Contest Case; Trial Is Set for Early Date.

J. W. Logan, one of five men indicted recently by the United States grand jury on a charge of using the mails fraudulently in persuading would-be settlers to locate on lands of the Oregon & California railroad land grant, which have been forfeited to the government and are not open to entry, appeared in federal court before Judge Bean this morning and pleaded not guilty.

His trial is set for an early date. He is a member of the group of five, which has come to be known as the Seattle group, as differentiated from the San Francisco group, of which W. F. Menard, Henry Seglars, Harper and Houston are other members. Harper recently pleaded guilty before Judge

### Counterfeiter Is Sentenced to Prison

Man Member of Gang Unearthed by Secret Service Three Months Ago—Two Others Plead Guilty.

Harry S. Stone, one of the members of the Puget sound counterfeiting ring captured by United States secret service agents three months ago, pleaded guilty before Judge Bean in federal court today and was sentenced to two and a half years in the McNeil island penitentiary.

Stone was arrested in Spokane, whether he had fled, by Agent W. A. Clover of Portland. His partner, W. C. Vaughn, pleaded guilty before Judge Bean last week and was given four years in the penitentiary.

Another partner, Charles Dutcher, is in jail at Seattle awaiting sentence. Dutcher has pleaded guilty but sentence was deferred until it was seen what the Portland prisoners would do. The three were charged with making and passing an excellent imitation of Uncle Sam's standard \$5 gold piece.

RANCHMAN IS SENTENCED. Frank Cacka, the young ranchman of Merrill, Klamath county, who two weeks ago was convicted of having written the mysterious "Mrs. F. Hunt" letters, offering fraudulent notes to Spokane banks to be discounted, was this morning sentenced by Federal Judge Bean to 15 months in the McNeil island penitentiary. Appeals made by his attorney for a new trial were denied yesterday by Judge Bean.

### ROSE SHOW THROWN OPEN AT PENINSULA PARK THIS AFTERNOON

Beautiful Display of Flowers Attracts Immense Crowd of Admirers.

### SUNKEN GARDEN BOOTHS

President C. C. Colt Declares Feature Thrown Open to Public; Concert by Band.

With thousands of beautiful roses on display, the Peninsula Park Rose Show was thrown open to the public this afternoon at 2:30 o'clock. C. C. Colt, president of the board of governors of the 1914 Rose Festival, declared the show officially open.

The booths in the sunken gardens and just south of the gardens occupied the attention of the judges between noon and 2 o'clock and the visitors were thus able to not only enjoy the exhibits, but to know just which ones had been judged the best in both beauty and quality.

The show enjoys its feature day today, for besides the exhibits themselves there will be a concert this afternoon by the municipal band and a vocal quartet of four under the direction of D. V. Poling this evening. The sunken gardens are to be illuminated shortly after dark, while this year's vocal quartet, by pupils from the public parks and ladies of the Multnomah club and Peninsula park was to be given.

The program was as follows: 9 a. m. to 4 p. m.—Eugenics contest in Peninsula park recreation building. Noon to 2 p. m.—Judging of roses and exhibits in booths south of sunken gardens. 2:30 p. m.—Formal opening of Peninsula Park Rose Show. Concert by Portland municipal band and official Rose Festival band. 4 p. m.—Rose dance, under direction of J. Lee Thompson, assisted by Miss Dege-mark. 8 p. m.—Open-air concert by 60 trained voices. 9 p. m.—Illumination of sunken gardens.

Voting at Ashland. Ashland, Or., June 9.—Ashland is voting today on the proposition of issuing \$175,000 additional bonds to bring mineral springs into the city. It is freely predicted that the vote will be two to one in favor, some placing it as heavy as four to one. The weather is fine and a large vote will be polled. Women are much interested.

Building at Sutherlin. Sutherlin, Or., June 9.—The brick work was started today on the new Sutherlin hotel on the corner formerly occupied by the Sutherlin Inn. The second floor is to be used for a store and is rented to McReynolds brothers of this place. W. E. St. John has begun the erection of a modern office building to be 25x50 feet. The front is to be of Kawneer pressed brick.

### Warrant Is Issued; Father Accused

Action Follows Accidental Breaking of Child's Leg, as Result of Physical Punishment Given Babe.

A warrant charging assault and battery was issued last evening in the municipal court against Alfred Lewis, 769 Union avenue, south, in which he is accused of breaking the leg of his three year old daughter. The child was taken to the Good Samaritan hospital Monday morning at 2:30 o'clock. Investigation by the department of safety for women brought to light that the child awoke Sunday midnight and cried for a drink of water. The father got the water, but the child continued to cry. Mother of the child related that Lewis became angry and chastised the child. In some way, the rough treatment resulted in a broken leg. Lewis had not been arrested at noon today.

### Verdict of Guilty Against Chapin

W. H. Chapin was summoned from a moving picture show last night to hear the verdict of the jury in Circuit Judge Kavanaugh's court finding him guilty of larceny by bailie of \$3500 from Mr. and Mrs. William Grace. Sentence will be imposed upon Chapin Thursday morning and the penalty is from one to 10 years in the penitentiary. An appeal will be taken to the supreme court.

The verdict was opened at 2:30 o'clock last night by Judge Gatena in the absence of Judge Kavanaugh. Five ballots were taken. The first jury in the case was dismissed after disagreeing for 44 hours. E. C. Herlow, indicted jointly on the same charge, will probably be tried before Judge Morrow next week.

Coming to Portland. Hood River, Or., June 9.—John P. Justin of Chehalis and Mrs. Lenora Winder, Dayton, Wash., arrested here Saturday, where they registered as man and wife at a local hotel, were taken to Portland this morning by Deputy United States Marshal Fuller and Special Agent Kemp on a white slave charge.

Charged With Mayhem. Charged with mayhem, Alfred C. Lewis, a teamster residing at 259 Union avenue, was arrested this morning by Deputy Constable Druhot and is held in the county jail in default of \$1000 cash bonds. He is alleged to have broken the leg of his 30-month-old daughter, Marguerite, Sunday, when he chastised her because she cried.

Graduation at Clatskanie. Clatskanie, Or., June 9.—The high school commencement exercises were held here in the school gymnasium Friday evening. A class of nine, five boys and two girls, were graduated. Splendid work has been done by the school throughout the past year. Rev. Luther R. Dyott of Portland delivered the address.

Tired Feet. With the coming of summer the usual foot ailments increase. A medicated foot bath and a few minutes of skilled work on the part of our surgeon chiropodist will relieve the tired feeling. Latest sanitary methods. Barber shop, Journal building. (Adv.)

We Give S. & H. Green Trading Stamps

**HANAN**

SHOES

have the style of the smartest custom models and afford the wearer absolute comfort.

**ROSENTHAL'S**

Sole Agents for Portland TWO STORES

129 Tenth St., 308 Washington, Bet. Wash. and Alder, Wilcox Bldg., For Men and Women. For Men Only.

We Give S. & H. Green Trading Stamps

**BAGS BURLAP-TWINE**

Manufacturers, Importers and Wholesale.

**WINKLEMAN BAG CO.**

Oldest and Largest Second Hand Bag Dealers in Northwest.

Main 4101 175 Front St.

**Rock Island**

**LOW RATES EAST**

VIA

**Rock Island Lines**

JUNE 1 TO SEPTEMBER 30 Inclusive.

RETURN LIMIT October 31, 1914

The Route of the De Luxe Rocky Mountain Limited

By purchasing your ticket at our office you have choice of any line out of Portland. Special attention to women and children traveling alone.

Tickets, Reservations, Information, Etc.

**M. J. GEARY**

General Agent Pass. Dept. 111 Third St., Portland, Oregon

Phones—Main 334, A-9008.

**Worrell's**

White Chinchilla Coats, Balmacaan Sleeves; Extra Special at \$7.95

**Worrell's**

Semi-Annual Clearance Sale of Women's and Misses' Suits, Coats, Dresses, Skirts and Waists

A Carnival of Bargains

More than 3000 Stylish Garments from which to make your selection—and every one of them at

**One-Half and Less Than Regular Prices**

Combination Sale of Suits, Coats and Dresses—hundreds of different models and any color desired. Regular \$20.00 and \$22.50 values, priced for this sale at **\$9.95**

A tremendous collection of more than 1000 Suits, Coats and Dresses—every one of them up to the minute in style, fabrics and colors—hardly any two alike. Regular \$30.00 and \$35.00 values, priced for this sale at **\$14.95**

**\$40, \$45 and \$50 Suits, Coats and Dresses at \$17.45**

In this group will be found nearly all of the highest grade garments we have in stock, suits representing the last word of fashion's approval and most expert man's tailoring. Materials of both silk and wool, in all the most popular shades and colors of the season. On sale at **\$17.45**

**Extra Special!** \$1.45 Waists at . . . 69c  
\$2.00 Waists at . . . 99c

**EXTRA!** 100 Linon Suits, slight-ly soiled, choice of lot. . . \$1

**Extra Special!** Regular \$5.00 Skirts in broken checks and plaids, single and double tunic effects **\$2.95**

**Worrell's Sample Cloak & Suit House**

Corner Sixth and Alder Streets Opposite Oregonian Building

**San Francisco Los Angeles**

LOW RATES, including berth and meals (Thru tickets to all points) The San Francisco & Portland S. S. Co. Third and Washington (With O-W. R. & N.) Telephone Marshall 4500, A-5121

**Oregon Humane Society**

67 Grand Ave. E., between Couch and Davis. Phones East 1423, B-2515.

OPEN DAY AND NIGHT!

Report all cases of cruelty to this office. Lethal chamber for small animals. Horse ambulance for sick or disabled animals at a moment's notice.

**Men's Summer Suits \$20**

Stylish pencil and hairline stripes, mixtures and plain tones, in gray, green, blue, tan, brown; English, box back and conservative models. Some from our \$25 lines, others just received from the House of Kuppenheimer. Special now at \$20.

**Outing Suits Now \$14**

Norfolk and Coat and Pants Suits in light and medium weight. Every new shade and model, including white and pin stripe flannels. \$20 and \$25 suits special at \$14.

Just in by express, new shapes in men's Panama Hats at \$5.

**Lion Clothing Co.**

GUS KUHN, Pres. Morrison At Fourth

Successors to Steinbach & Co.

The Store of 100 Per Cent Service

2-W Stamps Given.