

ALASKA SEAMEN
NOW TO BE RUN ON
A WEEKLY SCHEDULE

Trade Conditions Show an
Increase Which Warrants
Improvement of Service.

WILL BEGIN TOMORROW

Change will become effective by sailing
of J. B. Stetson, E. S. Thomas
L. Wand to be Free Lance Boat.

Trade conditions now warranting
the service of the Portland Steamship
company into Alaska is to be increased
by placing the steamers Quinault and
J. B. Stetson on regular weekly sched-
ule, with the steamer Thomas L. Wand
and Ketchikan, Chomly, Yes Bay, Burn-
ett Inlet, Wrangell, Petersburg, Ju-
neau, Douglas, Sheep Creek, Burners
Bay, Haines and Skagway. With the
change of the West Coast & Yukon
railway on June 1 enough business has
been assured the Portland Steamship
company to make this new schedule
practicable and it will be maintained at least
during the summer rush.

The Stetson and Quinault will not
touch at Puget sound ports under any
consideration now, but will make direct
trips back and forth between Portland
and Ketchikan, Chomly, Yes Bay, Burn-
ett Inlet, Wrangell, Petersburg, Ju-
neau, Douglas, Sheep Creek, Burners
Bay, Haines and Skagway. With the
change of the West Coast & Yukon
railway on June 1 enough business has
been assured the Portland Steamship
company to make this new schedule
practicable and it will be maintained at least
during the summer rush.

Arrangements of the running time
of the Quinault and Stetson will give
passenger service out of this port
every week instead of having to miss a
week whenever the Wand sailed, as has
been the custom since the steamer
started. Passenger traffic as well as
freight has been all that could be de-
sired so far, and every effort is being
made by the line to encourage it.

That the Stetson and Quinault will
have no trouble keeping to a 14-day
schedule is the belief of Manager Nor-
man F. Titus of the Portland Steamship
company. Captain E. L. Harriman
brought the Steamer E. Stetson in
last night from Alaska, having com-
pleted a round trip in 13 days and
stopped at Grays Harbor to load con-
siderable bulk of cargo for his return
voyage. Captain Harriman says that
he can make it without trouble and is
glad of the chance to improve the
service. The Steamer E. Stetson will
depart tomorrow night from here with
the cargo which the Wand was to have
taken and the Quinault next will op-
erate out of Portland thereafter on
each Thursday night at 9 o'clock.

The steamer Thomas L. Wand, Cap-
tain A. C. Jansen, now in the Oregon
Drydock being repaired from the
damage sustained in grounding north of
free lance freight service to Alaska
which will take in many ports of
call, Sitka, Klawack, Craig, Waterfall
and Karheen, and all other west
coast ports. Routine service will take
care of the shipments of lime being
made from Roche Harbor to Port-
land and of the typewriter and other
freight handled between Gypsum, Alas-
ka, and Roche Harbor. She will carry
no perishable freight of any kind.

LUCKENBACK IS WITHDRAWN

Local Agent Receives Orders Not
to Accept Freight.

The Luckenbach Steamship company,
which has been handling freight
between Portland and other Pacific
coast ports and also between the
Panama canal railroad, has with-
drawn from the Portland field.

Portland Steamship company and
S. F. Titus, manager of the
American-Hawaiian company, have
sailed for the Dodge steamship line,
has been the Luckenbach agent
here. Cables received yesterday
afternoon ordering the refusal of all
freight offered. Competition between
this line, the American-Hawaiian
Steamship company and W. R. Grace
& Co. has been so keen that it is
probable that the Luckenbach busi-
ness will be taken up by these two
lines.

FREIGHT TO BE RELEASED

American-Hawaiian Company En-
gages Extra Steamer.

North Pacific freight tied up at
Puerto Mexico and Salina Cruz, the
terminus of the Tehuantepec railroad,
since the Mexican trouble commenced,
will be brought north by the British
steamer Strathdon, which was char-
tered yesterday for that purpose by
the American-Hawaiian Steamship
company. The British steamer Ullidia
has also been taken by the American-
Hawaiian, and will sail for the east
bound freight now at the port of Mexico.
Announcements of the taking of these
two steamers was received by C. D.
Kennedy, local agent for the American-
Hawaiian Steamship company this
morning.

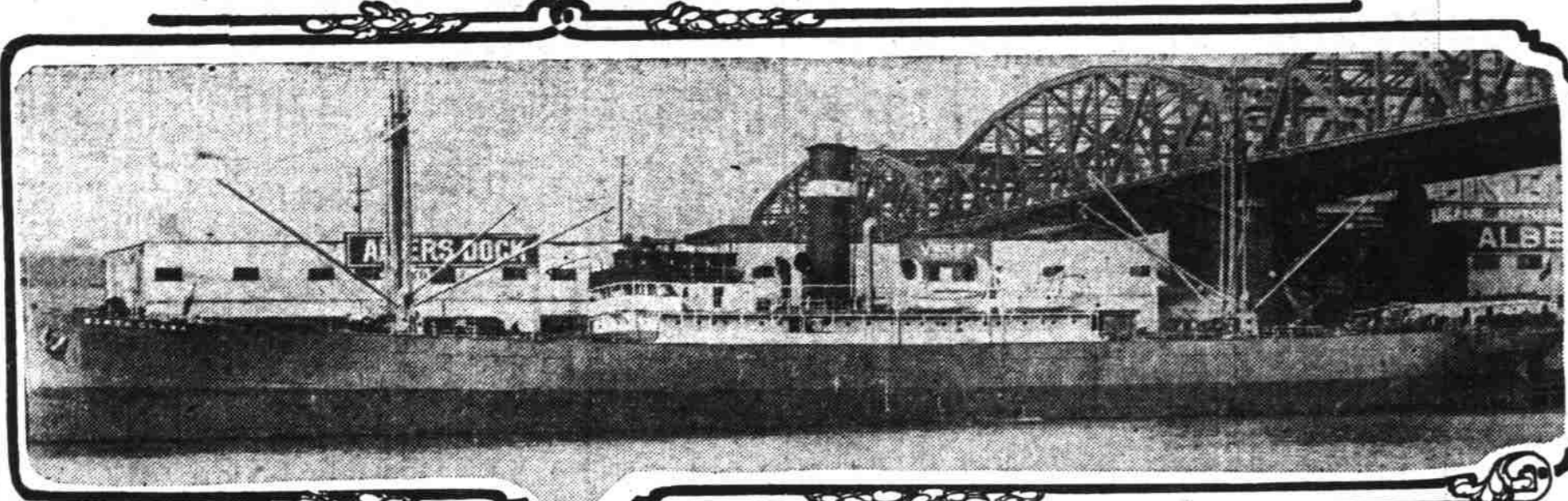
In the shipments awaiting the two

"Just Say"
HORLICK'S
It Means
Original and Genuine
MALTED MILK
The Food-drink for All Ages.
More healthful than Tea or Coffee.
Agrees with the weakest digestion.
Delicious, invigorating and nutritious.
Rich milk, malted grain, powder form.
A quick milk prepared in a minute
Take no substitute. Ask for HORLICK'S
Others are imitations

REMITICO
Typewriter Ribbons
and
Carbon Paper
LAST LONGEST
GIVE BEST RESULTS
Write for particulars of coupon plan.
Remington Typewriter Co.
(Incorporated)
66 BROADWAY, PORTLAND, OR.

SCHWAB PRINTING CO
245 F. GREENE, PRESIDENT
25 F. STARK STREET

NEW STEAMER OF GRACE LINE VISITS PORTLAND WITH CARGO FROM ATLANTIC COAST



The American steamer Santa Clara, one of the new W. R. Grace & Co.'s steamers, which arrived here Monday afternoon. She brought a cargo of 2500 tons of hardware, agricultural implements and miscellaneous stuff, beside 700 tons of building steel from Atlantic coast ports. She is at the plant of the Northwest Steel company now and will sail tomorrow afternoon for Puget Sound to finish discharging. Returning here she will load a cargo of lumber for Balboa. The Santa Clara is a sister steamer to the Santa Cecilia and Santa Cruz, and is commanded by Captain Crossley.

The steamer Santa Clara, one of the new W. R. Grace & Co.'s steamers, which arrived here Monday afternoon. She brought a cargo of 2500 tons of hardware, agricultural implements and miscellaneous stuff, beside 700 tons of building steel from Atlantic coast ports. She is at the plant of the Northwest Steel company now and will sail tomorrow afternoon for Puget Sound to finish discharging. Returning here she will load a cargo of lumber for Balboa. The Santa Clara is a sister steamer to the Santa Cecilia and Santa Cruz, and is commanded by Captain Crossley.

SIX FOOT CHANNEL REPORTED

Dredge Finishes Work on Oregon
City-Portland Run.

Oregon City, Or., May 21.—There is
now a six foot channel in the Willamette
river from Oregon City to Port-
land. This will assure river boats the
year round at this city. The United
States dredge Champogee has been
working for a good many months on
the river between here and Portland
and has just finished its work. Most
of the work has been done on the Clackamas
rapids, just below the mouth of the
Clackamas river, below this city. The
Champogee left for the Lewis river in
Washington, where it will work until
July, when the government will return
the dredge to this city.

ALONG THE WATERFRONT

The Willamette river stood at 14.8
feet at 8 o'clock this morning and Dis-
trict Forecaster E. A. Beala has an-
nounced that he believes it will come
to a temporary stand at that stage to-
morrow. A mistake in the quoting of
figures received from Lewiston made a
higher stage than that which is now
in effect. It has dropped slightly there
instead of raising and stands at 11.3.

In tow of the Ontario, the American
Steamship company's tugboat, most
morning from Astoria for the Oregon
drydock. She was towed north by the
Siuslaw by the tugboat Printer.

The American-Hawaiian Steamship
company's tugboat, most morning from
Astoria for the Oregon drydock. She
was towed north by the Siuslaw by the
tugboat Printer.

MARINE INTELLIGENCE

Due to Arrive.
May 21—Arrived at 3:30 p. m.—
Steamer Breakwater, Capt. T. J. Maegren,
from San Pedro and way. Arrived at
Portland, May 21, at 3:30 p. m. Steamer
Breakwater, for Coos Bay and Eureka, May
22. Steamer Breakwater, for Coos Bay and
Eureka, May 23. Steamer Breakwater, for
Coos Bay and Eureka, May 24. Steamer
Breakwater, for Coos Bay and Eureka, May
25. Steamer Breakwater, for Coos Bay and
Eureka, May 26. Steamer Breakwater, for
Coos Bay and Eureka, May 27. Steamer
Breakwater, for Coos Bay and Eureka, May
28. Steamer Breakwater, for Coos Bay and
Eureka, May 29. Steamer Breakwater, for
Coos Bay and Eureka, May 30. Steamer
Breakwater, for Coos Bay and Eureka, May
31.

Daily River Readings.

| Station | Height in feet | Change in feet | Direction |
|--------------|-------------------|-------------------|-----------|
| Portland | 14.8 | 0.2 | ↓ |
| St. Helens | 14.8 | 0.2 | ↓ |
| W. L. Bond | 14.8 | 0.2 | ↓ |
| St. Johns | 14.8 | 0.2 | ↓ |
| St. Paul | 14.8 | 0.2 | ↓ |
| St. James | 14.8 | 0.2 | ↓ |
| St. George | 14.8 | 0.2 | ↓ |
| St. Andrew | 14.8 | 0.2 | ↓ |
| St. Nicholas | 14.8 | 0.2 | ↓ |
| St. Basil | 14.8 | 0.2 | ↓ |
| St. John | 14.8 | 0.2 | ↓ |
| St. Peter | 14.8 | 0.2 | ↓ |
| St. Paul | 14.8 | 0.2 | ↓ |
| St. James | 14.8 | 0.2 | ↓ |
| St. George | 14.8 | 0.2 | ↓ |
| St. Andrew | 14.8 | 0.2 | ↓ |
| St. Nicholas | 14.8 | 0.2 | ↓ |
| St. Basil | 14.8 | 0.2 | ↓ |
| St. John | 14.8 | 0.2 | ↓ |
| St. Peter | 14.8 | 0.2 | ↓ |
| St. Paul | 14.8 | 0.2 | ↓ |
| St. James | 14.8 | 0.2 | ↓ |
| St. George | 14.8 | 0.2 | ↓ |
| St. Andrew | 14.8 | 0.2 | ↓ |
| St. Nicholas | 14.8 | 0.2 | ↓ |
| St. Basil | 14.8 | 0.2 | ↓ |
| St. John | 14.8 | 0.2 | ↓ |
| St. Peter | 14.8 | 0.2 | ↓ |
| St. Paul | 14.8 | 0.2 | ↓ |
| St. James | 14.8 | 0.2 | ↓ |
| St. George | 14.8 | 0.2 | ↓ |
| St. Andrew | 14.8 | 0.2 | ↓ |
| St. Nicholas | 14.8 | 0.2 | ↓ |
| St. Basil | 14.8 | 0.2 | ↓ |
| St. John | 14.8 | 0.2 | ↓ |
| St. Peter | 14.8 | 0.2 | ↓ |
| St. Paul | 14.8 | 0.2 | ↓ |
| St. James | 14.8 | 0.2 | ↓ |
| St. George | 14.8 | 0.2 | ↓ |
| St. Andrew | 14.8 | 0.2 | ↓ |
| St. Nicholas | 14.8 | 0.2 | ↓ |
| St. Basil | 14.8 | 0.2 | ↓ |
| St. John | 14.8 | 0.2 | ↓ |
| St. Peter | 14.8 | 0.2 | ↓ |
| St. Paul | 14.8 | 0.2 | ↓ |
| St. James | 14.8 | 0.2 | ↓ |
| St. George | 14.8 | 0.2 | ↓ |
| St. Andrew | 14.8 | 0.2 | ↓ |
| St. Nicholas | 14.8 | 0.2 | ↓ |
| St. Basil | 14.8 | 0.2 | ↓ |
| St. John | 14.8 | 0.2 | ↓ |
| St. Peter | 14.8 | 0.2 | ↓ |
| St. Paul | 14.8 | 0.2 | ↓ |
| St. James | 14.8 | 0.2 | ↓ |
| St. George | 14.8 | 0.2 | ↓ |
| St. Andrew | 14.8 | 0.2 | ↓ |
| St. Nicholas | 14.8 | 0.2 | ↓ |
| St. Basil | 14.8 | 0.2 | ↓ |
| St. John | 14.8 | 0.2 | ↓ |
| St. Peter | 14.8 | 0.2 | ↓ |
| St. Paul | 14.8 | 0.2 | ↓ |
| St. James | 14.8 | 0.2 | ↓ |
| St. George | 14.8 | 0.2 | ↓ |
| St. Andrew | 14.8 | 0.2 | ↓ |
| St. Nicholas | 14.8 | 0.2 | ↓ |
| St. Basil | 14.8 | 0.2 | ↓ |
| St. John | 14.8 | 0.2 | ↓ |
| St. Peter | 14.8 | 0.2 | ↓ |
| St. Paul | 14.8 | 0.2 | ↓ |
| St. James | 14.8 | 0.2 | ↓ |
| St. George | 14.8 | 0.2 | ↓ |
| St. Andrew | 14.8 | 0.2 | ↓ |
| St. Nicholas | 14.8 | 0.2 | ↓ |
| St. Basil | 14.8 | 0.2 | ↓ |
| St. John | 14.8 | 0.2 | ↓ |
| St. Peter | 14.8 | 0.2 | ↓ |
| St. Paul | 14.8 | 0.2 | ↓ |
| St. James | 14.8 | 0.2 | ↓ |
| St. George | 14.8 | 0.2 | ↓ |
| St. Andrew | 14.8 | 0.2 | ↓ |
| St. Nicholas | 14.8 | 0.2 | ↓ |
| St. Basil | 14.8 | 0.2 | ↓ |
| St. John | 14.8 | 0.2 | ↓ |
| St. Peter | 14.8 | 0.2 | ↓ |
| St. Paul | 14.8 | 0.2 | ↓ |
| St. James | 14.8 | 0.2 | ↓ |
| St. George | 14.8 | 0.2 | ↓ |
| St. Andrew | 14.8 | 0.2 | ↓ |
| St. Nicholas | 14.8 | 0.2 | ↓ |
| St. Basil | 14.8 | 0.2 | ↓ |
| St. John | 14.8 | 0.2 | ↓ |
| St. Peter | 14.8 | 0.2 | ↓ |
| St. Paul | 14.8 | 0.2 | ↓ |
| St. James | 14.8 | 0.2 | ↓ |
| St. George | 14.8 | 0.2 | ↓ |
| St. Andrew | 14.8 | 0.2 | ↓ |
| St. Nicholas | 14.8 | 0.2 | ↓ |
| St. Basil | 14.8 | 0.2 | ↓ |
| St. John | 14.8 | 0.2 | ↓ |
| St. Peter | 14.8 | 0.2 | ↓ |
| St. Paul | 14.8 | 0.2 | ↓ |
| St. James | 14.8 | 0.2 | ↓ |
| St. George | 14.8 | 0.2 | ↓ |
| St. Andrew | 14.8 | 0.2 | ↓ |
| St. Nicholas | 14.8 | 0.2 | ↓ |
| St. Basil | 14.8 | 0.2 | ↓ |
| St. John | 14.8 | 0.2 | ↓ |
| St. Peter | 14.8 | 0.2 | ↓ |
| St. Paul | 14.8 | 0.2 | ↓ |
| St. James | 14.8 | 0.2 | ↓ |
| St. George | 14.8 | 0.2 | ↓ |
| St. Andrew | 14.8 | 0.2 | ↓ |
| St. Nicholas | 14.8 | 0.2 | ↓ |
| St. Basil | 14.8 | 0.2 | ↓ |
| St. John | 14.8 | 0.2 | ↓ |
| St. Peter | 14.8 | 0.2 | ↓ |
| St. Paul | 14.8 | 0.2 | ↓ |
| St. James | 14.8 | 0.2 | ↓ |
| St. George | 14.8 | 0.2 | ↓ |
| St. Andrew | 14.8 | 0.2 | ↓ |
| St. Nicholas | 14.8 | 0.2 | ↓ |
| St. Basil | 14.8 | 0.2 | ↓ |
| St. John | 14.8 | 0.2 | ↓ |
| St. Peter | 14.8 | 0.2 | ↓ |
| St. Paul | 14.8 | 0.2 | ↓ |
| St. James | 14.8 | 0.2 | ↓ |
| St. George | 14.8 | 0.2 | ↓ |
| St. Andrew | 14.8 | 0.2 | ↓ |
| St. Nicholas | 14.8 | 0.2 | ↓ |
| St. Basil | 14.8 | 0.2 | ↓ |
| St. John | 14.8 | 0.2 | ↓ |
| St. Peter | 14.8 | 0.2 | ↓ |
| St. Paul | 14.8 | 0.2 | ↓ |
| St. James | 14.8 | 0.2 | ↓ |
| St. George | 14.8 | 0.2 | ↓ |
| St. Andrew | 14.8 | 0.2 | ↓ |
| St. Nicholas | 14.8 | 0.2 | ↓ |
| St. Basil | 14.8 | 0.2 | ↓ |
| St. John | 14.8 | 0.2 | ↓ |
| St. Peter | 14.8 | 0.2 | ↓ |
| St. Paul | 14.8 | 0.2 | ↓ |
| St. James | 14.8 | 0.2 | ↓ |
| St. George | 14.8 | 0.2 | ↓ |
| St. Andrew | 14.8 | 0.2 | ↓ |
| St. Nicholas | 14.8 | 0.2 | ↓ |
| St. Basil | 14.8 | 0.2 | ↓ |
| St. John | 14.8 | 0.2 | ↓ |
| St. Peter | 14.8 | 0.2 | ↓ |
| St. Paul | 14.8 | 0.2 | ↓ |
| St. James | 14.8 | 0.2 | ↓ |
| St. George | 14.8 | 0.2 | ↓ |
| St. Andrew | 14.8 | 0.2 | ↓ |
| St. Nicholas | 14.8 | 0.2 | ↓ |
| St. Basil | 14.8 | 0.2 | ↓ |
| St. John | 14.8 | 0.2 | ↓ |
| St. Peter | 14.8 | 0.2 | ↓ |
| St. Paul | 14.8 | 0.2 | ↓ |
| St. James | 14.8 | 0.2 | ↓ |
| St. George | 14.8 | 0.2 | ↓ |
| St. Andrew | 14.8 | 0.2 | ↓ |
| St. Nicholas | 14.8 | 0.2 | ↓ |
| St. Basil | 14.8 | 0.2 | ↓ |
| St. John | 14.8 | 0.2 | ↓ |
| St. Peter | 14.8 | 0.2 | ↓ |
| St. Paul | 14.8 | 0.2 | ↓ |
| St. James | 14.8 | 0.2 | ↓ |
| St. George | 14.8 | 0.2 | ↓ |
| St. Andrew | 14.8 | 0.2 | ↓ |
| St. Nicholas | 14.8 | 0.2 | ↓ |
| St. Basil | 14.8 | 0.2 | ↓ |
| St. John | 14.8 | 0.2 | ↓ |
| St. Peter | 14.8 | 0.2 | ↓ |
| St. Paul | 14.8 | 0.2 | ↓ |
| St. James | 14.8 | 0.2 | ↓ |
| St. George | 14.8 | 0.2 | ↓ |
| St. Andrew | 14.8 | 0.2 | ↓ |
| St. Nicholas | 14.8 | 0.2 | ↓ |
| St. Basil | 14.8 | 0.2 | ↓ |
| St. John | 14.8 | 0.2 | ↓ |
| St. Peter | 14.8 | 0.2 | ↓ |
| St. Paul | 14.8 | 0.2 | ↓ |
| St. James | 14.8 | 0.2 | ↓ |
| St. George | 14.8 | 0.2 | ↓ |
| St. Andrew | 14.8 | 0.2 | ↓ |
| St. Nicholas | 14.8 | 0.2 | ↓ |
| St. Basil | 14.8 | 0.2 | ↓ |
| St. John | 14.8 | 0.2 | ↓ |
| St. Peter | 14.8 | 0.2 | ↓ |
| St. Paul | 14.8 | 0.2 | ↓ |
| St. James | 14.8 | 0.2 | ↓ |
| St. George | 14.8 | 0.2 | ↓ |
| St. Andrew | 14.8 | 0.2 | ↓ |
| St. Nicholas | 14.8 | 0.2 | ↓ |
| St. Basil | 14.8 | 0.2 | ↓ |
| St. John | 14.8 | 0.2 | ↓ |
| St. Peter | 14.8 | 0.2 | ↓ |
| St. Paul | 14.8 | 0.2 | ↓ |
| St. James | 14.8 | 0.2 | ↓ |
| St. George | 14.8 | 0.2 | ↓ |
| St. Andrew | 14.8 | 0.2 | ↓ |
| St. Nicholas | 14.8 | 0.2 | ↓ |
| St. Basil | 14.8 | 0.2 | ↓ |
| St. John | 14.8 | 0.2 | ↓ |
| St. Peter | 14.8 | 0.2 | ↓ |
| St. Paul | 14.8 | 0.2 | ↓ |
| St. James | 14.8 | 0.2 | ↓ |
| St. George | 14.8 | 0.2 | ↓ |
| St. Andrew | 14.8 | 0.2 | ↓ |
| St. Nicholas | 14.8 | 0.2 | ↓ |
| St. Basil | 14.8 | 0.2 | ↓ |
| St. John | 14.8 | 0.2 | ↓ |
| St. Peter | 14.8 | 0.2 | ↓ |
| St. Paul | 14.8 | 0.2 | ↓ |
| St. James | 14.8 | 0.2 | ↓ |
| St. George | 14.8 | 0.2 | ↓ |
| St. Andrew | 14.8 | 0.2 | ↓ |
| St. Nicholas | 14.8 | 0.2 | ↓ |
| St. Basil | 14.8 | 0.2 | ↓ |
| St. John | 14.8 | 0.2 | ↓ |
| St. Peter | 14.8 | 0.2 | ↓ |
| St. Paul | 14.8 | 0.2 | ↓ |
| St. James | 14.8 | 0.2 | ↓ |
| St. George | 14.8 | 0.2 | ↓ |
| St. Andrew | 14.8 | 0.2 | ↓ |
| St. Nicholas | 14.8 | 0.2 | ↓ |
| St. Basil | 14.8 | 0.2 | ↓ |
| St. John | 14.8 | 0.2 | ↓ |
| St. Peter | 14.8 | 0.2 | ↓ |
| St. Paul | 14.8 | 0.2 | ↓ |
| St. James | 14.8 | 0.2 | ↓ |
| St. George | 14.8 | 0.2 | ↓ |
| St. Andrew | 14.8 | 0.2 | ↓ |
| St. Nicholas | 14.8 | 0.2 | ↓ |
| St. Basil | 14.8 | 0.2 | ↓ |
| St. John | 14.8 | 0.2 | ↓ |
| St. Peter | 14.8 | 0.2 | ↓ |
| St. Paul | 14.8 | 0.2 | ↓ |
| St. James | 14.8 | 0.2 | ↓ |
| St. George | 14.8 | 0.2 | ↓ |
| St. Andrew | 14.8 | 0.2 | ↓ |
| St. Nicholas | 14.8 | 0.2 | ↓ |
| St. Basil | 14.8 | 0.2 | ↓ |
| St. John | 14.8 | 0.2 | ↓ |
| St. Peter | 14.8 | 0.2 | ↓ |
| St. Paul | 14.8 | 0.2 | ↓ |
| St. James | 14.8 | 0.2 | ↓ |
| St. George | 14.8 | 0.2 | ↓ |
| | | | |