

PROVIDE WRETCHED HUTS IN FROZEN LAND FOR RUSSIAN EXILES

Old Places of Exile Found Inadequate to Care for Increased Numbers.

NINE MONTHS OF WINTER

Natives Live Close to Starvation, With Dried and Half Putrid Fish as Their Means of Subsistence.

London, May 20.—A frightful picture of conditions in the latest territory to be added to the Russian empire's exile area was received here today from the St. Petersburg correspondent of the United Press.

On account of the increasing number of political deportations from European Russia, the old places of exile have proved inadequate and the government has added to the list Russkoe Ustye, on the river Indigulka, in latitude 71 north, about 60 miles from the Arctic ocean.

A few miserable huts have been provided at the point chosen for the exiles. It is surrounded by a woodless, unproductive swamp. The nearest human habitation is at the miserable village of Ust-Yansk, about 600 miles distant. Ust-Yansk is a shelter post of men engaged in the liquor transport service.

Even here everything is left to chance. If opportunity offers, mail is delivered there. Often, however, the place is isolated for months at a time. Winter lasts nine months. During its depths the sun shines only an hour or two a day.

In the summer, when the roads from the south become passable, caravans bring supplies of vodka, which the traders barter for valuable furs. A period of general drunkenness invariably follows, during which the natives drink away the fruit of their year's work. They live in a permanent state of semi-starvation, mostly on dried and half putrid fish. There are no medical men and even lamps are unobtainable. Russkoe Ustye has not even Ust-Yansk's measure of civilization.

Project Workers Fighting Squirrels

Ditch-Riders at Klamath Carry Small Calibre Rifles and Farmers Are Supplied Free With Poison.

Klamath Falls, Or., May 23.—All ditch-riders employed on the Klamath project are armed with small calibre rifles and carry a quantity of squirrel poison, in a campaign to eradicate the squirrels from the project and thus increase the efficiency of the reclamation service.

The squirrels are wont to burrow into the ditch and canal banks, just above the waterline. As the head of water is increased, the bank, weakened by the burrowing, gives way and the water quickly washes out the bank, often necessitating the shutting off of the water in the large canals while repairs are being made.

In addition to the ditch-riders being on the firing line, the reclamation is enlisting the farmers in the fight. They are being supplied with free squirrel poison.

Speeder Arrested; Judge With Him

Officer Finds Magistrate in Back Seat of Machine Which Has Been Held Up of Exceeding Speed Limit.

Aberdeen, Wash., May 20.—When T. R. Breuner, a well known attorney, was stopped by the police today on the charge of speeding while on his way to the golf grounds, the officer told him he was under arrest, and that he must appear before Judge Snyder in the morning. Looking at the passenger in the rear seat the officer discovered that it was Judge Snyder himself. Snyder has been fining everyone arrested for speeding in the sum of \$10. Breuner is one of Snyder's intimate friends.

Chautauqua at Hood River.

Hood River, Or., May 20.—Decorations Day will be appropriately observed in Hood River by the members of the G. A. R. and Woman's Relief Corps this year and the committee on program has secured the services of R. A. Booth of Eugene to deliver the oration. The city has donated the old soldiers \$25 to aid them in arranging the program. Hood River citizens are preparing to hold a four days' Chautauqua meeting beginning July 1. The city council granted the committee the privilege of using the city property surrounding the abandoned water supply. It is thought that a much larger crowd will attend the sessions if they are held within the city. Last year's Chautauqua was not a financial success, the committee having the matter in charge losing approximately \$1200.

Carried Wood in Her Apron.

Bolinas, Cal., May 20.—Mrs. John Elfrick set her clothes on fire while putting an apronful of wood into her kitchen stove and was so badly burned that she died on her way to the hospital.

Your Own Home

Every Man Desires a Home

Help him get it by investing in this cooperative home-building organization. Stock—100 shares \$36. Pays 2% quarterly.

The Oregon Home Builders
Oliver K. Jeffrey, Pres.
Northwestern Bank Building



Building Success in Our Waist Store

—As we have built the largest waist business in Portland by a constant observance of the trend of New York and Paris fashions, plus a liberal policy, so shall we further increase the renown of our waist section by

Inaugurating an Immense Sale of Waists THAT WOMAN IS FORTUNATE WHO NEEDS NEW BLOUSES—NOW

—We have acquired by special and interesting purchases an immense collection of the newest waists in models very much in demand at the moment. Waists that are rare at these prices, for they were bought on a scale overshadowing any previous purchase ever made in this store.

—The blouses for this sale are the result of the most careful and painstaking shopping, as a consequence we have the choicest blouses in every material at every price, in each instance **MUCH LESS** than regular.

—The newest Summer blouses in Silks, Crepe de Chines, Georgette Crepes, Laces, Voiles, Cotton Crepes, Handkerchief Linen, Lingerie and novelty materials.

- | | | | |
|---|----------------|--|-----------------|
| Summer Blouses, selling regularly at \$1.75 | Special \$1.00 | Summer Blouses, selling regularly at \$4.50 | Special \$2.95 |
| Summer Blouses, selling regularly at \$2.00 | Special \$1.23 | Summer Blouses, selling regularly at \$5.00 | Special \$3.45 |
| Summer Blouses, selling regularly at \$2.50 | Special \$1.50 | Summer Blouses, selling regularly at \$6.00 | Special \$3.95 |
| Summer Blouses, selling regularly at \$2.75 | Special \$1.73 | Summer Blouses, selling regularly at \$6.50 | Special \$5.00 |
| Summer Blouses, selling regularly at \$3.00 | Special \$1.95 | Summer Blouses, selling regularly at \$8.00 | Special \$6.50 |
| Summer Blouses, selling regularly at \$3.50 | Special \$2.35 | Summer Blouses, selling regularly at \$9.50 | Special \$7.50 |
| Summer Blouses, selling regularly at \$3.75 | Special \$2.48 | Summer Blouses, selling regularly at \$10.50 | Special \$8.50 |
| Summer Blouses, selling regularly at \$4.00 | Special \$2.73 | Summer Blouses, selling regularly at \$12.50 | Special \$10.00 |



Summer House Dresses, Aprons and Kimonos Materially Price Lowered

\$1.25 and \$1.50 House Dresses 95c \$2.25 to \$2.75 House Dresses \$1.59

—These dresses are of nurse's stripe gingham or percales, in light or dark colors, made with sailor collar or yoke effects, and some with vest effects, with short or three-quarter sleeves. The skirts are plain or with panel back and piped waistline. They come in plain colors, checks, stripes and figures in tan, lavender, light blue, cadet and black and white checks. Sizes 34 to 46.

—These are our high-grade house dresses, extra well-fitting and well made, in a large variety of styles and materials, such as striped, checked and plaid ginghams, plain chambray, striped, checked and figured percales, in many new models. Made in high and low-neck effects, with round, sailor or collarless finish, trimmed with embroidery or bandings, long or short sleeves. Skirts are plain or with panel backs, finished at waist with belts or pipings. All sizes and colors.

- Coverall Aprons Special 50c**
—Made of percale, in light and dark colors, with kimono sleeves and turn-back cuffs, round neck finished with white pipings and belted back.
- \$2.25 Crepe Kimonos \$1.69**
—These kimonos are made of fine plisse crepe in dainty colors, light blue, lavender, tan, pink and gray, in pretty flowered patterns. They are made in empire style with V-neck and elbow sleeves, and are finished with satin bandings of contrasting colors.
- \$2.50 Jap. Kimonos \$1.75**
—Regulation Japanese kimonos of crepe in green, pink, rose, gray and cadet in dainty combinations of colors, with cherry blossoms and wistaria flowered patterns. All have sashes to match.
- \$1.50 Crepe Kimonos 98c**
—They are made of serpentine crepe in empire style in light blue, pink, lavender, cadet, navy or red. They have V-necks, short sleeves and are cord finished. —4th Floor

Sipman Wolfe & Co
"Merchandise of Merit Only"

Watch and Jewelry Repair'g
Sipman Wolfe & Co
"Merchandise of Merit Only"
Doll Hospital Sixth Floor

We Act in an Advisory Way to Men In Matters of Furnishings Today We Strongly Urge All Men to Economize by This Sale

—Having demonstrated in a series of wonderfully successful shirt sales that we have given as high intrinsic worth as anyone can give, we now turn our attention to men's pajamas, nightgowns and other Summer necessities.

—We shall **PROVE** to your entire satisfaction that nowhere else in the city can you secure such positive savings as are obtainable in our men's furnishing sales.

—Our **WHOLE** reputation hangs on the **FIRST** sale we make to you.

—Do you think we would **JEOPARDIZE** it?



- \$2.00 Union Suits, Special \$1.65**
—Fine white lisle thread union suits, made in the spring-needle weave, form-fitting. They have the new trouser seat, closed crotch, and are reinforced at all principal points of wear. Long or half sleeves, ankle length.
- \$1.50 Union Suits, Special 98c**
—White and ecru lisle thread union suits, made especially for Summer wear, with short or long sleeves, ankle length, and with the new style trouser seat. All reinforced at chief points of wear.
- \$1.00 Athletic Union Suits, Special 69c**
—The most convenient and coolest garments for Summer wear. They are of checked and barred nainsook, striped madras and soisette, made athletic style, sleeveless and knee length. Full range of sizes from 34 to 50.
- Porous Mesh Underwear**
—**\$1.00 union suits—Special, 69c.**
—**50c shirts and drawers—Special, 33c each.**
—Porous mesh is made with double holes, permitting the free ventilation of the body, and has always been considered a strictly health garment for Summer wear. They are made ankle length with long or half sleeves and come in either union suits or separate shirts and drawers.
- Athletic Shirts and Drawers 43c Each**
—Introducing a new line of two-piece athletic underwear, made from fine quality checked nainsook. The shirts are made sleeveless and are reinforced. The drawers are in knee length and have double seat.

- \$2.50-\$3 Pajamas \$1.65**
—These pajamas are made from fine quality silk mixed madras, French percale and soisette, made with military collar or V-neck, and are trimmed with single and double silk frogs.
- \$1.50 Summer Pajamas \$1.15**
—Plain colored and fancy striped pajamas of soisette and fancy madras. Made with military collar and trim with silk braid.
- \$1 Muslin Night Shirts Special 63c**
—These nightshirts are made of plain white muslin with V-neck or military collar, trimmed with single or double rows of white and fancy braid. They are all cut full size and are shown in sizes 15 to 18. —First Floor

- Silk Stockings**
\$1.50 Stockings, \$1.19
—Ingrain thread silk stockings in black, medium weight—made with wide-fashioned trunk tops of cotton for long wear and cotton soles with extra spliced toes. These have the popular lavender tops.
\$1.75 Stockings, \$1.35
—Extra heavy black ingrain pure thread silk stockings. Made with the durable cotton garter tops and soles—with the heels, toes and soles extra spliced for long wear. These stockings are elastic, extra long and extra full in width.
\$2.00 Stockings, \$1.50
—Outside silk stockings, thread silk, extra long and wide. In black, white, tan, pink, sky, cardinal or gray. —First Floor

Presenting Some New W. B. Corsets At Very Little Prices

- \$3.50 W. B. Models \$2.49**
—Made of extra quality coutil with embroidery trimmings. These corsets are made for the average figure, having medium busts and very long, straight lines over the hips, back and sides. Six elastic gores inserted at intervals around the bottom, which make for extra comfort.
- \$3.00 W. B. Models \$1.95**
—These corsets are made of the best grade coutil with dainty embroidery trimmings. Made with medium and low bust with extreme length over the abdomen, hips and back. Built on the latest straight lines, having three pairs of hose supporters attached.
- \$1.75 W. B. Uniform Corsets \$1.19**
—Medium and low bust models, fashioned with the long, graceful hip-conforming lines, having two pairs of hose supporters attached. Made of batiste and coutil, embroidery trimmed. Sizes 19 to 30. —Fourth Floor

Charming Trimmed Leghorn Hats At \$5.95, Instead of \$10.00

—For new Summer hats of such unapproachable distinction this is an extraordinary low price—there is a refined elegance to these New Leghorn hats that can only be imparted by an artist—a pleasing becomingness that sets off the face and gives a smart individuality to the wearer that is so satisfactory, and which places these hats above the kind one usually finds at this special price. They are most artistically trimmed with flowers, ribbons and many faced with plain or figured silk.

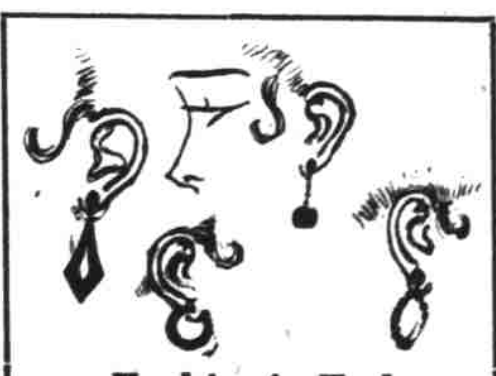
Smartly Trim'd Tailored Lizere Hats Special \$4.95 to \$15.00

—These tailored hats have a poise and dash that no word quite describes, but which will be appreciated by every woman who sees them tomorrow. As they are made of the new Lizere braids, they possess a newness that is decidedly appealing, besides they are attractively trimmed with ribbons, small clusters of flowers and small tailored wings. In all black effects. —Second Floor

These Summer Wash Fabrics Will Interest Many at These Prices

- 40c STRIPE CREPE 29c**
—A medium weight crepe, white grounds with black, blue, lavender and navy staple and cluster stripes. 32 inches wide.
- 75c Plaid Ratine, 49c**
—40 inches wide in broken and block plaids, multi-colors beautifully combined. It is constructed so as to prevent wrinkling, in a weight specially adapted for skirts, coats and dresses.
- 40c Printed Voile and Crepe Voile, Special, 25c**
—Soft, sheer and clingy fabrics, about 38 inches in width, in white and tinted grounds on which are printed small, neat colored floral designs.
- Silk Finish Moire Poplin, 50c**
—The very latest light-weight, soft-finish fabric, manufactured to comply with the present styles. Admirably suited for coats and dresses.
- 40c Satin Stripe Crepe, 29c**
—A crinkled crepe weave in colored grounds with white Jacquard satin stripe in very novel effect. The colors are blue, pink, mode, russet, helio, delft blue, rose and black. —Basement

25% Reduction on all Framed Pictures Ready-Made Frames Metal Frames Unframed Pictures Frames Made to Order
Sixth Floor.



Fashion's Fad Novelty Earrings Inexpensive in Price

—According to the latest reports from New York and abroad, novelty earrings are enjoying great popularity.

—Earrings of splendor and sparkle or soft, subdued tones, or one's own personal color, or a match for one's costumes, or a reflection of some sentiment, or a contrast with some tone scheme—these new earrings offer these many opportunities for personal adornment.

—In pendant style and hoop effects in French jet, jade and white stone novelty effects, of pearl, gold plate and colored stone, set in new and unusual shapes.
50c to \$12.00 each
—First Floor.