

STATE WILL EXPEND \$170,000 FOR ACTUAL ROAD CONSTRUCTION

Money Will Go to Counties Where Permanent Road Work Is Under way.

CLATSOP WILL GET SLICE

Money Will Be Used Only for Purpose of Hardsurfing Highways Built Along Approved Scientific Lines.

(Salem Bureau of The Journal.)
Salem, Or., May 12.—There is \$170,000 in the state highway fund available for use in actual road construction and the state highway commission yesterday afternoon decided to expend this sum in hardsurfing roads in counties where permanent highways are being built. At the present there are only three counties in this class, Jackson, Columbia and Clatsop, but as their counties vote highway bonds they will be entitled to share in the funds.

State Highway Engineer H. J. Bowlby was instructed to proceed to expend the money for this purpose. He said the first work will be done in Clatsop county, where probably a five mile stretch of highway will be hardsurfaced. The state's money is to be used only in putting on the hard surface.

In reaching this decision the members of the commission held that it was just to give the state's aid to those counties which were undertaking the construction of a system of permanent roads, rather than to scatter the limited amount of money over the state for repairing or improving temporary roads. The hardsurfing done by the state also will serve as demonstration roads and be an encouragement to other counties to join in the permanent road movement.

The tax levy for the state highway commission raised \$238,000. Of this sum \$50,000 is being spent on the Wasco-Biggs road, in Sherman county, and about \$10,000 is being used for engineering work and general expenses of the highway department.

The highway commission was advised that the contract has been let for the Clatsop county section of the Columbia river highway to the Royal-John-Arnold company of Portland, for approximately \$225,000.

The road will extend from Astoria to the Columbia county line and the work is to be completed by November 1.

Statement of Governor.
In explanation of the disposition being made of the state highway fund, Governor West today issued the following statement:

"In order that an erroneous impression, which has gotten out as to the expenditures of the state highway department may be corrected, the following statement is being issued by me. The last legislature appropriated \$10,000 for the support of the highway department for 1912, or until the fund to be raised by public subscription is available in 1914. On May 1 of this year the books of the secretary of state showed \$9000 of the said \$10,000 fund expended.

"The said millage tax is now available in amounts to \$238,570.60. The books of the secretary of state show, under date of May 1, the entire fund intact, no warrants having been drawn against it. However, road construction and surveys now under way in several of the counties, together with some needed equipment which when paid for, consume between \$50,000 and \$70,000 of the said fund and will leave about \$170,000 for other construction in accordance with the plans of the commission."

Ready to Locate Bank Near Docks

Application for Charters for Warrenton and Flavel Filed with State Superintendent.

(Salem Bureau of The Journal.)
Salem, Or., May 12.—On the strength of the announcement that the Hill railroad terminals will likely be at Warrenton, or Flavel, near Astoria, applications for a bank charter at each place have been received by State Superintendent of Banks S. G. Sargent.

Frank Rowe of Wheeler and G. H. Kleinmorge and Russell E. Sewall of Portland seek a charter for a bank at Warrenton. They propose to organize a bank with a capital of \$25,000.

Charles M. Hemphill, Mary C. Hemphill and Charles E. Strohloch, all of Portland, are the incorporators of the proposed bank for Flavel. This bank would have a capital stock of \$15,000.

Mr. Sargent said he had not yet determined whether the applications would be approved or not.

Woman Who Wears Men's Attire Taken

Police Find She Has Large Amount of Gold Concealed on Her Person and Hold on Suspicion.

Seattle, May 12.—Masquerading in male attire with "gold" in greenbacks secreted about her person, Mrs. D. B. Simpson, alias "Frisco Andrews," was arrested at the King street station this morning as she was about to leave for Butte. She is believed to be insane or to be connected with a gang of train robbers.

The woman said she made the money working in Arizona dance halls and in similar places in Salt Lake City and Spokane, on her way to Seattle. She said she had intended to leave for Alaska last night but missed the boat and changed her mind and was going to Butte. She explained that the reason for her male attire was that someone was following her and she feared of robbing her and she changed attire to elude him.

Drinks Poison Upon Baker's Main Street

(Special to The Journal.)
Baker, Or., May 12.—Drinking scarbolic acid in full view of many people on Main street this morning, George Leadbetter, a North Powder saloon-keeper, ended his life, swallowing sufficient poison to cause almost instant death. A verdict of suicide was returned by a coroner's jury. Leadbetter was about 25 years of age. He was well known here and friends can ascribe no motive for his crime.

Ask the woman voter who knows—she'll tell you John. (Paid Adv.)

64th ANNIVERSARY of Lipman Wolfe & Co. 1850 1914

Splendid Sale Offerings for Wednesday---Each Section Out for a Record



During the Anniversary Sale Now in Progress No More Attractive Sale Than These Extraordinary Dresses \$9.85 Selling Regularly at \$15, \$18, \$22.50

—One-piece models of the finest wool crepe cloth, French serges, chiffon and shepherd check materials.
—Dresses that fill your requirements for all kinds of social wear in styles that are newest and most beautiful.

In Copenhagen, Navy Blue, Reseda, Tango, Tan, Terra Cotta, Royal Blue, Black-and-White Checks

—The tunic, the tier and the bouffant skirts are all shown here in their various fashions—trimmings of silk or fancy net and collars of embroidery lace. Seams are fancy corded or tailored lap effects and the sleeves are in the kimono style.

Announcement The Custom Tailoring Salon

—Has at its disposal imported materials in the newest Spring weaves suitable for two and three-piece suits.
—As an added feature to our 64th Anniversary Sale we offer to our patrons the opportunity of selecting from this broad assortment of imported fabrics and having made to their especial order tailored suits at the special price—

Fifty Dollars

—This price is most exceptional and we feel certain it will be appreciated by our customers. —Seventh Floor

Imported Baskets Half Price

Baskets for every need—of every description. Some are ready for use, others require a padded silk cushion or perhaps an artistic ribbon bow or a bit of lingerie.

- \$3.00, \$4.25 to \$6.75 Hampers, Sale \$1.50, \$2.12 to \$3.38.
- \$5.75 and \$4.75 Muffin Trays, Sale \$2.88 and \$2.38.
- 65c and 75c Fruit Baskets. Sale, 33c and 38c.
- 65c to \$3.00 Work Baskets. Sale, 33c and \$1.50.
- 65c to \$4.50 Waste Paper Baskets. Sale, 33c to \$2.25.
- \$1.35 to \$1.75 Darning Baskets. Sale, 68c to 88c.
- 35c to \$1.00 Novelty Baskets. Sale 18c to 50c.
- \$5.00 to \$9.00 Sewing Stands. Sale, \$2.50 to \$4.50.
- \$12.95 Baby Baskets, \$6.48. —Fifth Floor.



500 New and Novelty Summer Blouses Selling Regularly at \$2.50 and \$3.00 At \$1.50

Providing a Selection of New Paris Blouse Styles of White and Colored Embroidered Voile

—These identical styles were recently created in Paris and they were costly. We had them reproduced by one of our exclusive waist makers and will offer them Wednesday at our specialty price of \$1.50.

—They are reproduced from a soft, fine quality white voile in allover embroidered effects or with pastel colored floral designs. They show the new large Gladstone collars of white organdie or with low necks and turned-down collars. The sleeves are kimono in style and trimmed with lace and embroidery. —Third Floor

Brassieres of Allover Embroidery 59c Instead of 85c

—Excellent for producing the slender figure.
—These brassieres are a dainty and dressy style that can be worn under thin blouses without a corset cover.
—They are made of a good strong quality allover embroidery in open eyelet design and are trimmed around the neck and armholes with a narrow embroidery edging. Made in the hook front style and reinforced under the arms. —Fourth Floor

Silk Shadow Laces Heretofore From \$1.50 to \$2.00 At a Record Price 98c

—Consider the variety of uses there are these days for laces and you will more than appreciate this very special opportunity. For blouses, coatees, vestees, boudoir caps, matinees, under bodices, petticoats, flounces on dance frocks and trimmings of all kinds—these silk shadow laces we show in more than fifty designs, including the newest Crauele, Brussels, Hexagon and Paraguay meshes. In white, cream and black. In widths from 9, 12, 17 to 22 inches. First Floor

French and German Valenciennes Laces 65c for 12-Yard Pieces

Regular 10c, 15c and 20c Yard

—Because of a fortunate purchase from an importer we are able to offer these laces at prices much less than usual. And it is a most opportune season, because for Summer dresses laces are in great demand.

—These laces are the fine French and German thread Valenciennes from 3/4 to 2 1/2 inches wide, showing many different and pretty designs, having strong firm edges. —First Floor

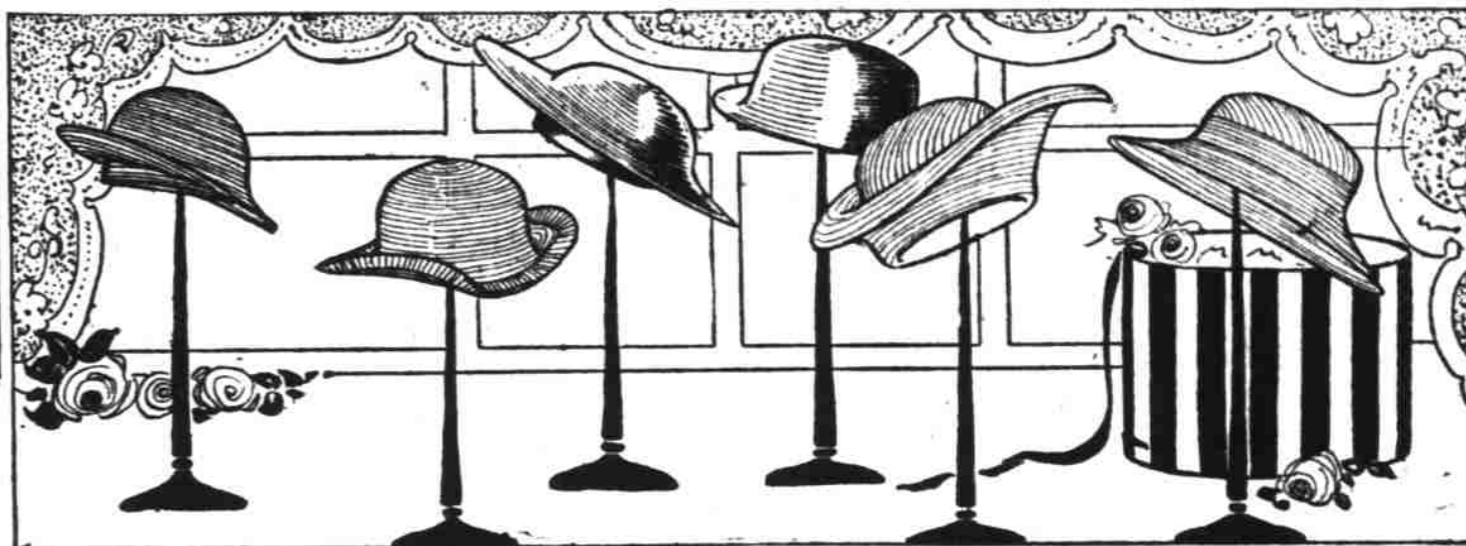
Every Silk and Cloth Dress for Young Girls Lowered in Price

—Even the dresses that have just come in—the smart silks and serges, novelty materials and the chiffon party frocks showing the latest style touches.

—Dresses for every occasion, for morning wear and school wear, for afternoon, for dancing and evening parties.
—In white, blues, tans, browns, checks and bright spring colorings, in plain and patterned materials.
—Sizes 14, 16 and 18 years.

Serge Dresses, special. \$4.95, \$6.95, \$9.95 to \$24.50
Silk Dresses, special. \$9.95, \$12.45, \$17.95 to \$38.50
Party Dresses, special. \$12.45, \$13.95, \$14.95 to \$38.50 —Fourth Floor

Lipman Wolfe & Co. "Merchandise of Merit Only"



Now for a Record Sale of Untrimmed Hats

The Newest in Shapes—in Black and Colors 95c In Milan—Hemps Lizare and Hemps SELLING REGULARLY FROM \$1.45 TO \$2.95

—A most interesting collection of hats for late spring and midsummer wear—hats that have all the chic of French models. Smartly uptilted brims—bandeau effects—straight jaunty sailor shapes—small and medium shapes—in fact, a collection of hat shapes to meet every woman's idea of becomingness. —Second Floor

Imported Flowers for Millinery Trimmings 50c That Sell Regularly at \$1.00 to \$1.50 Each

—As the season advances the vogue for flower trimmings increases until now it seems as though one could not use too many of these brightly colored blossoms. We were fortunate in securing the entire sample line of a very prominent importer who sells flowers to the leading Fifth-avenue, New York, shops. They come in small clusters, sprays, wreaths and montures, reproducing nearly every kind of flower that grows in field and garden, and in all their natural colorings. —Second Floor

INNOVATION Wardrobe Trunk SALE

—This sale embraces the four styles of wardrobe trunks and at the prices offered practically eliminates every other wardrobe trunk from your consideration.

—As these trunks are the standard of luxury in traveling—never equalled in their convenience of arrangement, or in their strength and lightness combined—people who intend buying INNOVATION TRUNKS should do so while this offer lasts.

- Regular \$25 Grade Innovation Trunk \$19.95
- Regular \$45 Grade Innovation Trunk \$33.00
- Regular \$65 Grade Innovation Trunk \$42.50
- Regular \$75 Grade Innovation Trunk \$56.00 —Basement

New Models Bien Jolie Grecian Treco Corsets

—These Bien Jolie corsets are beautiful in line, perfect in construction and comfortable.

—Ideal for dancing, for they are cool and flexible.
—Very low at the bust with insets of elastic, thus giving absolute freedom over the diaphragm, and others with elastic at the bottom of the corset to insure ease when sitting.
—Prices range from \$3, \$5.00 to \$20.00 each. —Fourth Floor

Girls' Smartly Tailored Suits Special \$15.00, \$27.50 and \$34.95

—Perfectly tailored suits in styles that are as original and distinctive as those for older folks, but built on youthful and graceful lines.

—Of check materials, soft wool crepes, serges, fancy novelty fabrics in blues, tans, browns, mahogany and black and white checks.

—Fashioned with short, jaunty jackets showing various styles of kimono sleeves. Skirts in tunic and ruffled effects or peg-top styles. —In sizes from 14 to 18 years. —Fourth Floor

To Be Featured Tomorrow A Sale of Summer Undermuslins At Very Conspicuous Economies

- GOWNS**
—Of nainsook, longcloth and crepe in slipover styles and some with button fronts; cut with round or square necks and long or short sleeves. Some very attractive camisole effects, and others trimmed with lace edgings, ribbons, insertions and embroidery.
\$1.50 and \$1.75 Gowns. 75c
\$1.35 and \$1.50 Gowns. 98c
\$2.00 Gowns. \$1.69
\$2.50 Gowns for. \$1.95
- COMBINATION SUITS**
—A most complete assortment of suits in princess and waisted styles. Of nainsook and fine lingerie cloth. Daintily trimmed in various effects with laces, embroideries and ribbons run through beadings, and many inset with medallions.
75c Combination Suits. 59c
\$1.25 Combination Suits. 89c
\$1.00 Combination Suits. 79c
\$1.50 and \$1.65 Combinations. \$1.19
\$2.25 Combination Suits now at \$1.59
\$2.75 and \$3.00 Combinations. \$2.29
\$4.00 and \$4.50 Combinations. \$3.39
- LINGERIE SKIRTS**
Regular \$1.50 for 98c
—These skirts are made of fine longcloth, having ruffles of embroidery and beading finish drawn with ribbon.
- CAMISOLES**
—Very attractive garments of fine shadow laces, accordion pleated or plain and gathered styles. Also of lingerie cloth and lingerie crepe in white, pink and blue. Ribbon straps over the shoulders and lace and ribbon trimmed.
\$1.25 Camisoles. 89c
\$1.50 Camisoles. \$1.19
- CORSET COVERS**
—These covers are made of longcloth in many styles, trimmed with embroidery, laces and insertions and ribbons. Some with deep yokes formed of embroidery.
40c Corset Covers. 29c
75c Corset Covers. 49c
- 75c Bloomers 59c**
—Made of an excellent quality white plisse crepe of fine long cloth, in all sizes. In closed style, with elastic at knee and waist. —Fourth Floor

Hydegrade dress fabrics

—By All Odds, the Most Successful Sale of Wash Materials Ever Held in This Store. Women Are Jubilant Over Fabrics That Rival Silks—At the Prices of Modest Cotton Materials.

- 40c WOVEN STRIPE CREPE, 29c**
—This fashionable weave comes in white and tinted grounds in crinkled effects. It has a satin warp stripe harmonizing with the ground shade.
- 85c SILK MIXED RATINE, 59c**
—In this material beauty of texture and durability are combined—soft, clingy, non-crushable—full 36 inches wide. In solid colors in all the new and standard shades.
- 75c CREPE DE CHINE, 59c**
—This is probably the best adapted dress material for the 1914 styles, is constructed of silk and cotton, and almost defies detection from the all-silk fabric. In all the late colors, also black and white.
- 50c STRIPE TUB SILK, 39c**
—32 inches wide, in staple and fancy stripes, in all the new color combinations.
- 25c CHIFFON SHANTUNG, 17c**
—A silk mixed light weight dress material in solid colors and changeable effects. In 35 of the new colors.
- 60c PRINTED JACQUARD, 49c**
—A light weight silk and cotton fabric with self Jacquard dots over which are printed floral and figured designs in the latest hues; 36 inches wide.
- 60c CRYSTAL SILK CREPE, 39c**
—Full 36 inches wide—in solid colors with pebbled surface. Blues, pinks, lavender, black, green and peach. —Basement