

COMMISSION HOPES TO MAKE PORTLAND ONE OF SAFEST HARBORS

Powerful Tugs and Deep Water Will Be Aim of Most Energetic Efforts.

To make the Port of Portland one of the safest harbors for ships to approach in the world is the ambition of the present members of the Port of Portland commission.

"Portland must lack nothing in order to be able to compete with other ports of the Pacific coast and it is our ambition to have our term as members of the Port of Portland commission be a downing history as one having done the greatest possible good for the port."

"Had such a tug been available for service at the time of the recent storms off the coast there would never have been the long water embargo that was experienced," says Captain Alstrup in a letter supplementary to the main report of the committee.

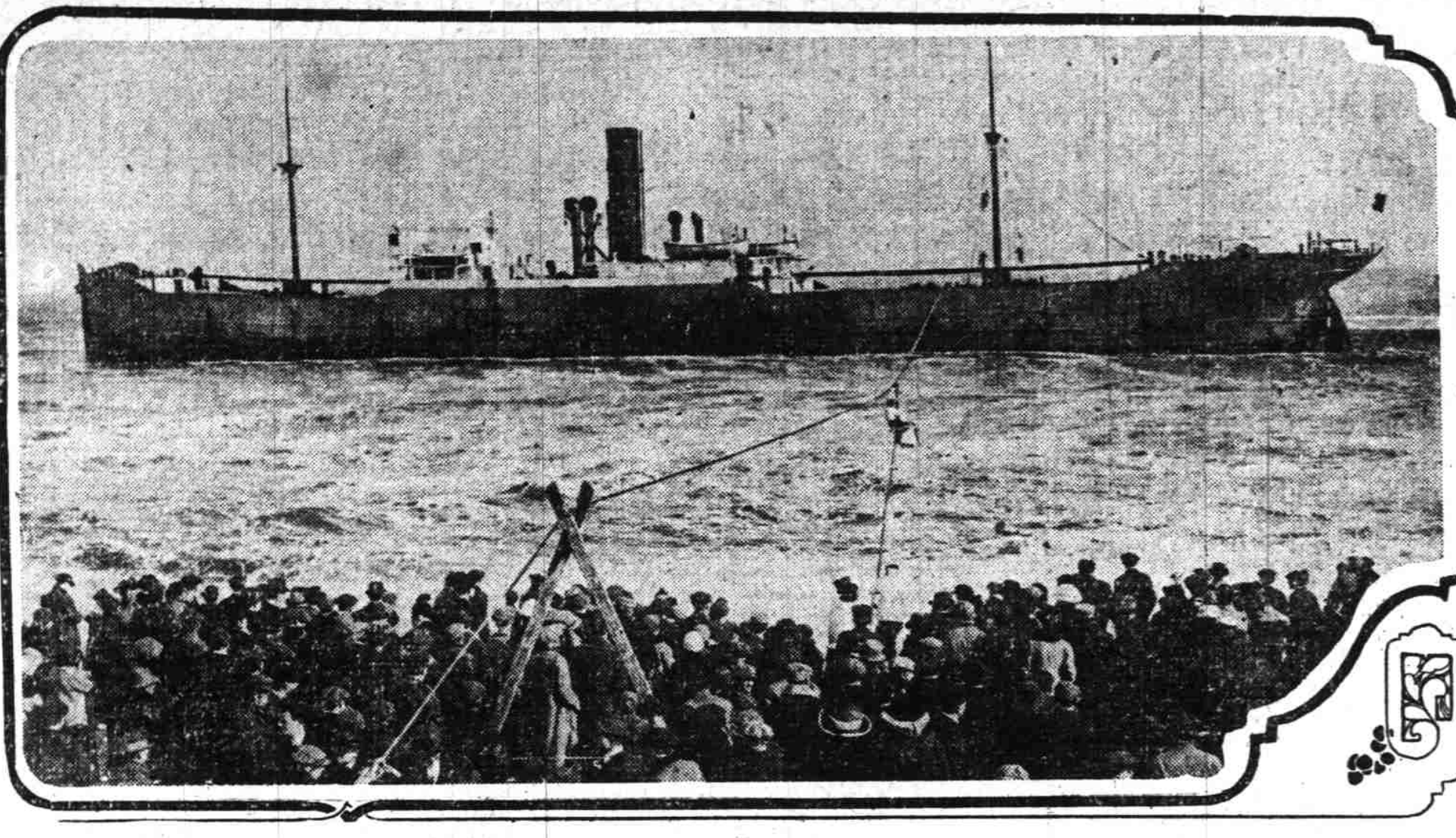
"When the British ship Clyde appeared off the bar during the storm a pilot was put aboard her but the tug Wallula could not take hold of her. Headway was impossible for them. She was forced to stay outside for some time."

"The case of the Hinemoa, another British ship, nearly proved disastrous. Little sea was running but a strong wind came up soon after we started out with her, making it impossible to put her about."

"Should a ship of the size of the steamer Bear or Beaver get into trouble we could not handle her in any kind of fog or storm. This would be forced to depend on San Francisco and the time lost might mean the loss of the harbor."

"Deepen Harbor and River." "Betterment of Portland's harbor facilities till such a point is reached that we command the respect of the entire shipping world is to be the ambition of this commission," continued President Meares.

REMARKABLE PHOTOGRAPH OF THE TRAMP STEAMER QUEEN LOUISE ASHORE OFF MANASQUAN, N. J.



The crowd on the shore is watching the rescue of one of the sailors who is being rescued in a breeches buoy.

tion, rising to a height of 146 feet above the water. They are oval in shape, measuring 20 by 20 feet and are 42 feet above the decks. Each funnel consists of two parts, an inner funnel and an outer tube, which serves for cooling purposes.

CHARTER MARKET IS QUIET

Many Coasters Reported Disengaged in San Francisco. Shippers in general report the past week the dullist in so far as charters have been concerned.

MARINE INTELLIGENCE

Due to Arrive. Breakwater, from Coos Bay, Feb. 15. Yachting, from San Francisco, Feb. 15. Bear, from San Diego and way, Feb. 15.

CRAFT IN PORT FOR REPAIRS

Tug L. Roscoe and Barge Frederick Here From Siuslaw. From the Siuslaw river to undergo repairs to hull and boiler, the tug L. Roscoe reached the Oregon wharves yesterday afternoon.

WHITE WINGS DISAPPEARING

Steamship Man Predicts Freightling by Power Craft. That the ocean freighting of the future will be done almost completely by steam-power vessels is the opinion held by N. P. Titus, manager of the Pacific Steamship company and of the Dodge line of steam schooners.

ALONG THE WATERFRONT

New timbers in her hull preparatory to installing new boilers will be placed in the steamer Sue H. Elmore. She will be lifted on the Port of Portland drydock Monday.

day. "The coming years will see the freightage done by fleets of steam vessels patterned after the lines which we will have running to Honolulu, Alaska and the south, and the big fleets of modern freighters which other companies are planning to operate through the canal to Pacific coast ports from Europe and the Atlantic seaboard."

MARINE INTELLIGENCE

Due to Arrive. Breakwater, from Coos Bay, Feb. 15. Yachting, from San Francisco, Feb. 15. Bear, from San Diego and way, Feb. 15.

MARINE NOTES

Astoria, Feb. 14.—Arrived at 3 and left up at 6:30 a. m.—steamer W. F. Herrin, from Port San Luis. Arrived at 7 and left up at 9:10 a. m.—steamer Catania, from Port San Luis.

COUNTY COURT NEWS

County Sealer of Weights and Measures D. G. Tomassin was instructed to make monthly reports of his work to Deputy State Sealer F. G. Buchtel on the latter's request.

ALONG THE WATERFRONT

New timbers in her hull preparatory to installing new boilers will be placed in the steamer Sue H. Elmore. She will be lifted on the Port of Portland drydock Monday.

ALONG THE WATERFRONT

New timbers in her hull preparatory to installing new boilers will be placed in the steamer Sue H. Elmore. She will be lifted on the Port of Portland drydock Monday.

Rockwood School Wins. Rockwood, Or., Feb. 14.—Rockwood school defeated Rockwood grange in a spelling match in grange hall Wednesday night, in which the participation were 15 grange members, about 25 school children and two school teachers.

MARINE INTELLIGENCE

Due to Arrive. Breakwater, from Coos Bay, Feb. 15. Yachting, from San Francisco, Feb. 15. Bear, from San Diego and way, Feb. 15.

MARINE NOTES

Astoria, Feb. 14.—Arrived at 3 and left up at 6:30 a. m.—steamer W. F. Herrin, from Port San Luis. Arrived at 7 and left up at 9:10 a. m.—steamer Catania, from Port San Luis.

COUNTY COURT NEWS

County Sealer of Weights and Measures D. G. Tomassin was instructed to make monthly reports of his work to Deputy State Sealer F. G. Buchtel on the latter's request.

ALONG THE WATERFRONT

New timbers in her hull preparatory to installing new boilers will be placed in the steamer Sue H. Elmore. She will be lifted on the Port of Portland drydock Monday.

ALONG THE WATERFRONT

New timbers in her hull preparatory to installing new boilers will be placed in the steamer Sue H. Elmore. She will be lifted on the Port of Portland drydock Monday.

Rockwood School Wins. Rockwood, Or., Feb. 14.—Rockwood school defeated Rockwood grange in a spelling match in grange hall Wednesday night, in which the participation were 15 grange members, about 25 school children and two school teachers.

MARINE INTELLIGENCE

Due to Arrive. Breakwater, from Coos Bay, Feb. 15. Yachting, from San Francisco, Feb. 15. Bear, from San Diego and way, Feb. 15.

MARINE NOTES

Astoria, Feb. 14.—Arrived at 3 and left up at 6:30 a. m.—steamer W. F. Herrin, from Port San Luis. Arrived at 7 and left up at 9:10 a. m.—steamer Catania, from Port San Luis.

COUNTY COURT NEWS

County Sealer of Weights and Measures D. G. Tomassin was instructed to make monthly reports of his work to Deputy State Sealer F. G. Buchtel on the latter's request.

ALONG THE WATERFRONT

New timbers in her hull preparatory to installing new boilers will be placed in the steamer Sue H. Elmore. She will be lifted on the Port of Portland drydock Monday.

ALONG THE WATERFRONT

New timbers in her hull preparatory to installing new boilers will be placed in the steamer Sue H. Elmore. She will be lifted on the Port of Portland drydock Monday.

GRESHAM HIGH SCHOOL BASKETBALL TEAM IS BEATEN BY ESTACADA

Visitors Roll Up Score of 32 to 6; Gresham Girls Also Defeated. Gresham, Or., Feb. 14.—The boys' basketball team of Gresham high school was defeated by the Estacada high school team last night at the local skating rink by a score of 32 to 6.

Rockwood School Wins. Rockwood, Or., Feb. 14.—Rockwood school defeated Rockwood grange in a spelling match in grange hall Wednesday night, in which the participation were 15 grange members, about 25 school children and two school teachers.

Rockwood School Wins. Rockwood, Or., Feb. 14.—Rockwood school defeated Rockwood grange in a spelling match in grange hall Wednesday night, in which the participation were 15 grange members, about 25 school children and two school teachers.

MARINE INTELLIGENCE

Due to Arrive. Breakwater, from Coos Bay, Feb. 15. Yachting, from San Francisco, Feb. 15. Bear, from San Diego and way, Feb. 15.

MARINE NOTES

Astoria, Feb. 14.—Arrived at 3 and left up at 6:30 a. m.—steamer W. F. Herrin, from Port San Luis. Arrived at 7 and left up at 9:10 a. m.—steamer Catania, from Port San Luis.

COUNTY COURT NEWS

County Sealer of Weights and Measures D. G. Tomassin was instructed to make monthly reports of his work to Deputy State Sealer F. G. Buchtel on the latter's request.

ALONG THE WATERFRONT

New timbers in her hull preparatory to installing new boilers will be placed in the steamer Sue H. Elmore. She will be lifted on the Port of Portland drydock Monday.

ALONG THE WATERFRONT

New timbers in her hull preparatory to installing new boilers will be placed in the steamer Sue H. Elmore. She will be lifted on the Port of Portland drydock Monday.

Metzger, Cleo Mathews, Mildred St. Clair, Miss Adams, Mr. and Mrs. J. A. Davidson gave a Valentine party this afternoon at their home on the Powell Valley road one mile east of Gresham.

Rev. Mrs. Pitts, who underwent a surgical operation at her home Thursday, is under the care of a trained nurse. Her condition is reported as satisfactory.

SENTIMENT IN FAVOR OF WELL PAVED ROADS

Rockwood, Or., Feb. 14.—Before an audience of interested property owners who crowded the Maccabees hall last night, Rufus C. Holman, chairman of the board of county commissioners, and John Hall discussed the proposed hard surfacing of the Base Line road from the Portland city limits to the top of the hill west of the upper Sandy river bridge.

Meeting at Lents

Lents, Feb. 14.—The W. C. T. U. met at the Third avenue residence of Mrs. Gezell Tuesday afternoon.

Will Speak on "Money"

Dr. C. H. Chapman will speak on "Money" at Library hall, Central Library building, Thursday evening, February 19. The public is cordially invited. Admission free.

Miss Metzger Seriously Ill

Gresham, Or., Feb. 14.—Miss Velma Metzger, daughter of Harvey Metzger, who is seriously ill with pneumonia at her Main street home, is not yet out of danger.

DOCK AT GLENADA INDICATED IN BUY

Railroad Sub-Contractors Lease Waterfront at Tide Lands. Glenada, Or., Feb. 14.—Porter Brothers-Grant Smith company, sub-contractors on the line of the Willamette-Pacific, which is being built from Eugene to Coos Bay, have leased the waterfront and tide lands from the Wendling-Johnson Lumber company at Glenada, and will erect a dock and warehouse for supplies to be used in the grading for the railroad between the Siuslaw river and Coos Bay.

Glenada is nearly three miles to the westward of the down-the-coast line, but the railroad company has purchased property near and is expected to extend a spur to this place from opposite Acme, where the railroad will cross the Siuslaw river. The road to the lakes, south of here, leads to the right of way, leaves the Siuslaw bay from this place.

The Elmore Steamship company has recently put the steamer Tillamook on the Portland-Siuslaw bay run in order to care for the railroad supplies which will soon be coming in large quantities, and has announced its intention of adding another boat if it be necessary.

Funeral of John Wallig

Montavilla, Feb. 14.—The funeral of John Wallig, aged 81, of Montavilla, was held this afternoon from the local Roman Catholic church. Interment was in Multnomah cemetery.

Miss Metzger Seriously Ill

Gresham, Or., Feb. 14.—Miss Velma Metzger, daughter of Harvey Metzger, who is seriously ill with pneumonia at her Main street home, is not yet out of danger.

The Graves Music Co. Removal Sale Prices

protect all purchasers—reflect—we publish quality—makers' names—styles—woods—usual prices—reduced prices—terms of payment—all are published—we are thus committed—can't charge more—can't charge less. Is this not protection—is this not what you prefer, instead of being left in the dark about how much the cash price and how much you need to pay in cash and how much monthly?—perhaps paying \$350 elsewhere when your neighbor likely paid \$275, or you can buy the same quality here during Removal Sale for \$195 — \$10 cash, \$6 monthly?

These First-Class Artistic \$475 New Bennett Pianos \$315 Cash



You Can Afford to Pay \$15.00 Cash and \$8.00 Monthly

You can therefore afford to buy one of these pianos with but simple banking interest added, when buying it on time

A Lifetime to Profit by This Sale

Now the opportunity is yours to save 33 1-3 to 60 per cent—after this sale the prices on new pianos go back to regular figures. If you want as good pianos as are made—if you want a piano or player piano you will enjoy living with—that you can pass to the generation after you—then you want the kind of a piano or player piano offered in this sale.

Come in as Critical as You Please—See This Artistic Style H Bennett

in finest mahogany, oak or walnut—clean-cut case design—its full, sweet tone—its new, improved, easy repeating action—it will go to satisfy you that this is the best brand-new, first-class piano proposition ever offered—you really will want to buy now. We will take your indifferent piano or organ as first payment.

Start With \$1 Make your selection now and pay \$1 down, if you do not want to pay the full amount, and then, before delivery, you pay the balance in cash of \$9, or whatever agreement you make for the first payment, and the balance \$8 monthly, etc. and up.

Graves Music Co. Removal Sale 111 Fourth Street

D. D. D. Opens New Era in Cure of Skin Disease

Mr. F. O. White of St. Louis, after long and painful suffering from a violent case of eczema, was finally cured by the efficient D. D. D. Prescription. He is now happy and thankful to his only remedy that gave him relief. He wants to tell any who write him of his cure. This is his letter:

D. D. D. Soap Keeps Your Skin Healthy

Ask any druggist today for D. D. D. Prescription. He'll tell you it allays the itch instantly—and soon there are signs of cure. We have handled the remedy for years and regard it as the specific for skin troubles of all kinds. Come in and ask us about D. D. D. Prescription; also about D. D. D. Soap, especially the full-size bottle on the guarantee that unless it stops the itch at once it costs you not a cent. Huntley Drug Co., Washington at Fourth, Woodard, Clarke & Co., Drugists.