

OREGON POSSESSES ENGINEERS OF HIGH TALENT, IS DECLARED

President of Oregon Society Declares Unnecessary to Send Away for Men.

That the engineering talent of Oregon is of the highest order and competent for any task that might be presented, and that it is certainly unnecessary to send outside the state for engineering talent in connection with the larger jobs, was asserted by Walter H. Graves, president of the Oregon Society of Engineers...

Wilbur E. Conan, vice president and general manager of the Northwestern Electric company, spoke reminiscences of the early days of railroads in Oregon, and the Panama canal, saying that while its benefits will be tangible and ultimately great, its effect on coast commerce will be only gradually felt.

Franklin T. Griffith, president of the Portland Railway, Light & Power company, discussed the relations which the modern public service corporation must bear to the public, asserting that the public service corporation has no longer anything to hide and could not if it would, under present conditions.

PASTOR FINED \$50 FOR RETAINING REBATE

Rev. J. H. Hopp, pastor of the German Lutheran Congregational church, was fined \$50 by District Judge Jones yesterday afternoon for retaining a rebate on insurance of the church. J. H. McKendle, the insurance man, testified that he had insured the church and collected \$78 as premium. He said that later he returned \$24 to Hopp, when he secured a reduction of the rate, but that the receipt showed the full amount collected. It was this money and a \$5 contribution which Hopp was alleged to have kept.

Y. M. C. A. LEADERS TO DELIVER ADDRESSES

Two of the most noted speakers in the Young Men's Christian Association will speak at the annual meeting and banquet of the organization, which will be held next Thursday evening at 8 o'clock. The speakers will be Fred B. Smith, head of the religious work department in New York, and Ralph C. Goodwin, general secretary at San Francisco. Mr. Smith has spoken in Portland several times and has made a deep impression.

BRIDGE ENGINEER TO ADDRESS ALBINA MEN

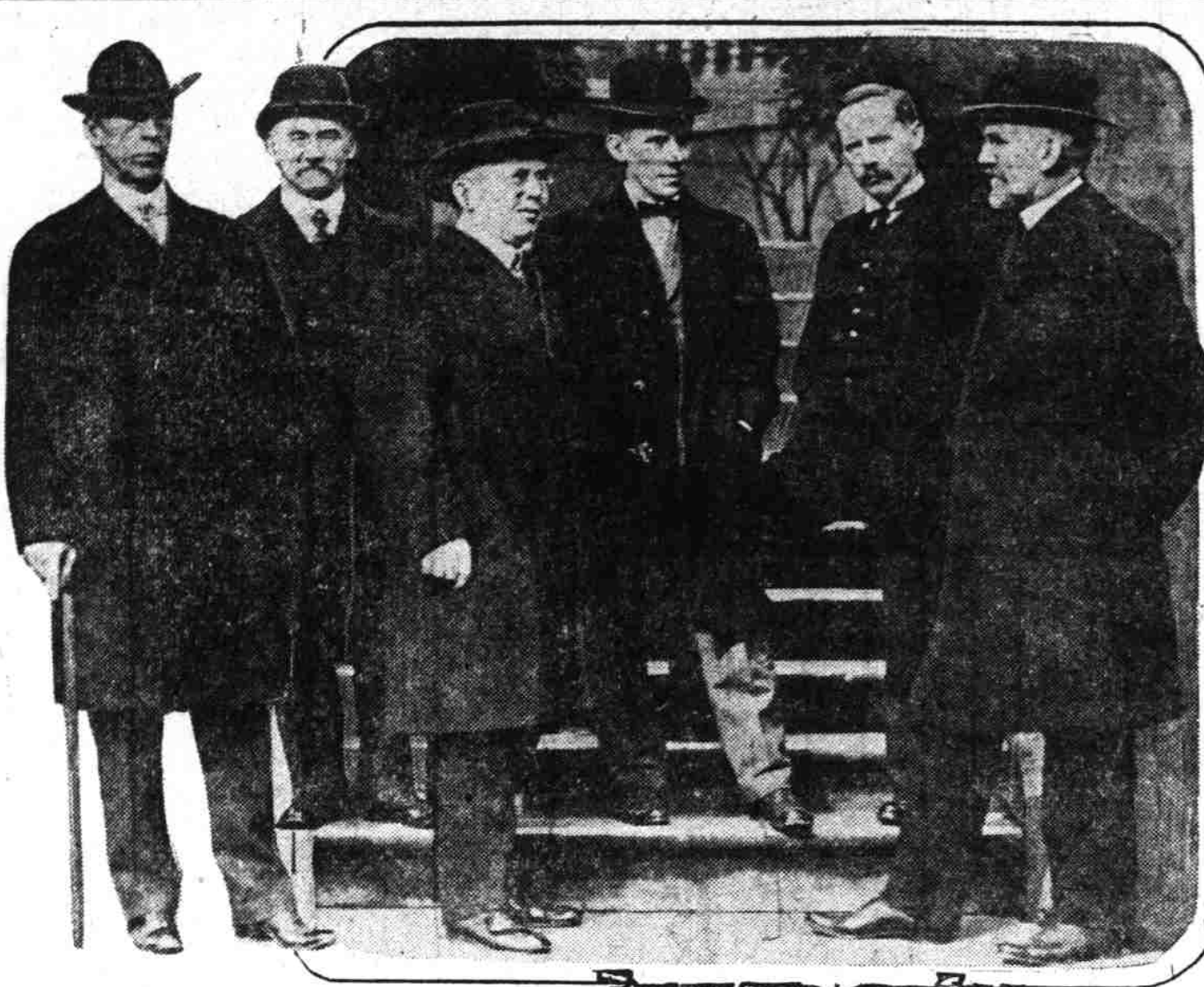
E. E. Howard, resident engineer of the firm of Waddell & Harrington, who has been instructed to prepare surveys for three routes on each side of the river as approaches to the Interstate bridge, will address the meeting of the Albina Business Men's club at 8 o'clock this evening at the Albina branch library, 359 Knott street. He has expressed a desire to learn the opinions of all interested in the location of the bridge approach, and tonight's meeting will advance the claims of Vancouver avenue as the cheapest and shortest route to the bridge.

Reparation for Gill Co. (Washington Bureau of the Journal.) Washington, Feb. 3.—The Interstate Commerce commission has ordered reparation in the complaint of the J. K. Gill company of Portland against the Oregon-Washington Railroad & Navigation company et al. on mimeographs and neostyles shipped from Chicago to Portland.

Old Man Killed on Trestle. San Diego, Cal., Feb. 3.—Caught on a Santa Fe trestle, G. W. Turner, aged 84, of Ocean-side, was almost instantly killed late yesterday. Seeing the old man's plight, the engineer threw on the brakes, but was unable to bring the train to a standstill in time to save him.

Shur-ons Fitted Here End Eye Troubles Glasses if needed, as low as \$2.00 THOMPSON Optical Institute 209-10-11 Corbett Bldg. 5th and Morrison

MISSIONARY TEAM TO TELL OF NEEDS OF CHINA AT BANQUET THIS EVENING



Left to right—Rev. A. A. Fulton, Canton; Rev. C. A. Killie, Paotingfu; Rev. J. C. Garritt, Nanking; Rev. Davis S. Tappan Jr., Hainan; Rev. W. T. Locke, Hunan; Rev. W. H. Lingle, Hunan.

The most important feature of the week in connection with the visit in Portland of the China team, a delegation from the Presbyterian board of foreign missions, is the banquet to be held tonight at the Presbyterian church house at Twelfth and Alder streets.

RECKLESS DRIVING OF AUTO IS ALLEGED

Attorney Bristol Complaining Witness Against M. Jensen.

Attorney William C. Bristol is the complaining witness in a complaint filed this morning in the municipal court against M. Jensen, 576 Salmon street, charging the reckless use of the latter's machine last Sunday afternoon. A warrant has been issued for the arrest of Jensen.

There were about 35 other auto drivers before the court for traffic violations, future to have a 1914 license tag was the chief complaint. In most cases a fine of \$2 was imposed. Those arrested for reckless driving were fined heavily.

"Chief first" is the slogan adopted by Chief Clark and the Auto club committee, in which it is proposed to continue arrests of violators of the state law and city ordinance.

BRIDGE ENGINEER TO ADDRESS ALBINA MEN

E. E. Howard, resident engineer of the firm of Waddell & Harrington, who has been instructed to prepare surveys for three routes on each side of the river as approaches to the Interstate bridge, will address the meeting of the Albina Business Men's club at 8 o'clock this evening at the Albina branch library, 359 Knott street.

Reparation for Gill Co. (Washington Bureau of the Journal.) Washington, Feb. 3.—The Interstate Commerce commission has ordered reparation in the complaint of the J. K. Gill company of Portland against the Oregon-Washington Railroad & Navigation company et al. on mimeographs and neostyles shipped from Chicago to Portland.

Old Man Killed on Trestle. San Diego, Cal., Feb. 3.—Caught on a Santa Fe trestle, G. W. Turner, aged 84, of Ocean-side, was almost instantly killed late yesterday.

San Diego, Cal., Feb. 3.—Caught on a Santa Fe trestle, G. W. Turner, aged 84, of Ocean-side, was almost instantly killed late yesterday. Seeing the old man's plight, the engineer threw on the brakes, but was unable to bring the train to a standstill in time to save him.

COFFEE AND AUTOS ARE USED TO GET WOMEN IN CHICAGO TO REGISTER

First Registration Day Brings Out Many Thousands to Try Innovation.

(United Press Leased Wire.) Chicago, Feb. 3.—Women were registering heavily today for the automobile primaries to be held February 24. By 9 p. m., when the polls closed for the day, it was believed 175,990 of them would be on the rolls.

Several wealthy society women had made elaborate preparations for getting their names on the franchise rolls. They had their automobiles on hand to carry them to the registration places, trained nurses had been provided to care for babies while their mothers waited for their names to be listed, there were flowers on the clerks' tables and rugs covered the floors of the booths.

There was no issue at stake in which the women were especially interested, but leaders of the equal rights movement wanted to show that having been granted the franchise, they were not backward in exercising it.

WORKERS TO COME LATER

Mrs. Edwin T. Stewart, secretary of the Illinois Suffrage association, estimated that 150,000 women had registered. She placed the average at 35 per precinct. Few except housewives, whose time was more or less their own, appeared during the forenoon. The rush of working women was expected late in the day.

PRISONERS MAKE USE OF PUBLIC DEFENDER

Judge Stevenson Is Pleased With Result of First Day's Experiment.

Municipal Judge Stevenson is well pleased with the way his public defender was received yesterday. This was the first day of the experiment of furnishing moneyless men with an attorney. Attorney Henry L. Lyons is doing this work this week, his services being free.

Before court sat, the public defender went among the prisoners and asked if any wanted legal advice. Two young men arrested for assault and battery were the first to consult him. They were advised to plead not guilty. One was discharged in court. The second was fined \$10.

STARTS WITH HANDICAP

Los Angeles, Feb. 3.—Prevented by washouts from reaching Santa Barbara, Mrs. E. G. Merchant of Oakland gave birth to a daughter at a hospital where her comfort was provided by Southern Pacific officials. The "S. P." and the rain combined to furnish the baby's name—"Sara Pluvius."

Final Call Absolutely no Fall Suit or Cloak can remain at these two sensational cut prices. Your choice of a handsome selection values to \$30 \$10.00 \$15.00 Ladies in justice to yourself, you should see these beautiful garments. A glimpse will convince you they are the best values in the city. Our low, upstairs rent enables us to always beat any competition. COME EARLY WHILE THE SELECTIONS ARE BEST Note Location Upstairs Note Location Second Floor, Rooms 203-204-205 Sweetland Bldg. Fifth and Washington Sts.—Red Building National Sample Suit & Cloak Co.

COFFEE AND AUTOS ARE USED TO GET WOMEN IN CHICAGO TO REGISTER

First Registration Day Brings Out Many Thousands to Try Innovation.

(United Press Leased Wire.) Chicago, Feb. 3.—Women were registering heavily today for the automobile primaries to be held February 24. By 9 p. m., when the polls closed for the day, it was believed 175,990 of them would be on the rolls.

Several wealthy society women had made elaborate preparations for getting their names on the franchise rolls. They had their automobiles on hand to carry them to the registration places, trained nurses had been provided to care for babies while their mothers waited for their names to be listed, there were flowers on the clerks' tables and rugs covered the floors of the booths.

There was no issue at stake in which the women were especially interested, but leaders of the equal rights movement wanted to show that having been granted the franchise, they were not backward in exercising it.

WORKERS TO COME LATER

Mrs. Edwin T. Stewart, secretary of the Illinois Suffrage association, estimated that 150,000 women had registered. She placed the average at 35 per precinct. Few except housewives, whose time was more or less their own, appeared during the forenoon. The rush of working women was expected late in the day.

TUNNEL MIGHT BE DUG BY COUNTY PRISONERS

Cooperation between owners of property south of Portland Heights, in the Tualatin valley, and the county may yet accomplish the much talked of tunnel through the hills south and west of the city should a proposition advanced by County Commissioner Holman receive favorable consideration.

HEADQUARTERS

Waterman's Ideal Fountain Pen 35 1/2 Washington St. Morgan Bldg. (near Park) The only exclusive Fountain Pen Store in the city, carrying the largest line of Fountain Pens in the Northwest from \$1.00 up. We make a specialty of repairing all makes of Fountain Pens, or liberal allowance on your old pen. G. S. SPARKS, Prop. (PEN SPECIALIST) 20 years with L. E. Waterman Company

Where Will You Lunch or Dine This Evening?

Why not come to the Hofbrau-Quelle—which excels as a rendezvous for those who desire the most carefully selected foods—cooked and served the most pleasing and courteous way, amid surroundings of delightful congeniality, lulled by the cheerful harmony of the Imperial German Orchestra. Then on Sunday, from 5 to 8:30 with special musical program there is an Extra Special Table d'Hote Dinner One Dollar which is contributing much to the fame of this already famous German restaurant of the Pacific Northwest. Entrance on Sixth and Alder.

P. R. & P. SHOWS INCREASED BUSINESS IN QUARTERLY REPORT

Expenses of Doing Business Somewhat Heavier Than Same Period Last Year.

For the quarter ending December 31, 18,155,991 passengers were carried by the Portland Railway, Light & Power company in the city, compared with 18,250,876 for the corresponding period of 1912. This is

The total revenues from the 14 cities and towns in which the company does business, including Portland, Salem, Vancouver, Wash., and Oregon City, from railway operation, light and power, amounted to \$17,746,118.85 for the quarter, compared with \$17,009,191.86 in 1912, an increase of \$736,926.99. Operating expenses, including bridge rentals, taxes and interest, amounted to \$1,335,241.84, against \$1,238,736.05 for the period of 1912. This shows an increase of expenses amounting to \$96,505.79.

Hotel Multnomah

The Arcadian Garden —the mecca of the discriminating. Here you will find, befitting luncheon, dinner or an after-the-theatre party, the same high-class cuisine, service and environment—also the delightful entertainment of Professor Heller's splendid orchestra and special features, as: THIS WEEK MISS SUSANNE REMI, Soprano SENOR BALLINOFERI, Tenor The noted operatic stars, who will entertain you with selections from the operas—really a treat that you will enjoy. L. P. REYNOLDS, Asst. Mgr.

PEOPLES THEATRE WEST PARK AND ALDER

ANTONY and CLEOPATRA Eight Superb and Spectacular Parts A Full Two-Hour Show Admitted by All to Be Unquestionably the Greatest, Most Entrancing and Fascinating Photo Spectacle of Modern Times. Leone Cass Baer in

Monday's Oregonian Says:

"Antony and Cleopatra" is of the interesting sort, and the response from the audience strongest kind of testimony as to its favorable impression."

The Journal Says:

"World history in the making is the undercurrent in 'Antony and Cleopatra' at the Peoples Theatre this week. This and many other points of historical value can be gleaned from this wonderful photo-drama production."

The News Says:

"Like all of the Kleine productions, there is a grandeur and vastness and all the oriental display and luxury for which this Egyptian court was so famous under this queen."

Schedule of Shows 11:30 A. M., 1:30 P. M., 3:30 P. M., 5:30 P. M., 7:30 P. M., 9:30 P. M. Prices Balcony 15c Lower Floor 25c Box Seats 50c Box Seats Reserved in Advance. Marshall 860, A-2087

AMUSEMENTS

HEILIG THEATRE CITY MAIL ORDERS RECEIVED NOW (Also from out of town.) E. SOTHERN ALL NEXT WEEK Mon. & Tue. Nights, Wed. & Sat. Mts. "IF I WERE KING." Wed. Eve., "HAMLET." Thurs., "MERCHANT OF VENICE." Fri., "TAKING OF THE FORT." Sat. Eve., "HAMLET." Prices, Both Night and Matinee—Lower Floor, \$2, \$1.50, \$1.00, 75c, 50c, 25c, 10c. Balcony, \$1.50, \$1.00, 75c, 50c, 25c, 10c.

America's Most Beautiful Rathskeller PATTERNED after the most unique German originals. Service and cuisine unequalled. Cabaret Chanson Musical program during lunch, dinner and after the theatre by the American Beauty Revue Chorus and Soloists. Merchants' Lunch 50c Hotel Oregon Wright-Dickinson Hotel Co., Props. M. C. Dickinson, Managing Director. Chas. Wright, Pres.

HEILIG THEATRE Friday, Feb. 6 Saturday, Feb. 7 MOOSE MINSTRELS Under the auspices of Portland Lodge, No. 291 Loyal Order of Moose for the benefit of the building. TICKETS \$1, 75c, 50c, 25c All the latest songs and jokes. Performances at 8 P. M.

BAKER THEATRE The Popular Baker Players Extrordinary variety, variety, variety. "The Girl in the Red Coat," "The Girl in the Blue Coat," "The Girl in the Green Coat," "The Girl in the Yellow Coat," "The Girl in the Orange Coat," "The Girl in the Purple Coat." Prices, Both Night and Matinee—Lower Floor, \$2, \$1.50, \$1.00, 75c, 50c, 25c, 10c. Balcony, \$1.50, \$1.00, 75c, 50c, 25c, 10c.

LYRIC Fourth and Stark Sts. Keating & Flood Musical Comedy Company in 'Variety Isle,' comedy success, full of entirely original numbers. Tuesday night, athletic contest; Thursday night, 50-piece dinner set for 5 cents; Friday night, chorus girls' concert. A \$1 show at popular prices. Nights, 10c and 25c. Matinee, any seat, 15c. Curtain 7:30, 7:55, 8:10.

COLUMBIA THEATRE Feature Sunday to Wednesday: "CONSCIENCE" Western Bronchos, Revue, Respite With Thrilling Situations. "Too Many Millions" Keystone Comedy, and Musical Weekly. 10c—ADMISSION—10c. O. A. C. Glee Club Saturday, Feb. 7th, 8:15 P. M. LINCOLN HIGH SCHOOL AUDITORIUM Seats on sale Wednesday, Feb. 4, at Frank Nau's Drug Store Admission 35c, 50c, 75c