

NEWS AND REVIEWS FROM UNIVERSITY AND COLLEGE

Portland Student Honored by Harvard Classmates; Michigan Union Largest in Country; Anthropological Exhibits at Berkeley; Other Campus News.

Information for these columns is furnished by a committee of the Oregon branch of the Association of Collegiate Alumnae.

Harvard University. In the senior election of officers at Harvard last week the third highest honor, that of third marshal, went to Louis Hunt Mills, of Portland, Oregon, a varsity oarsman and football player.

Preparing for the opening of the new freshman dormitories, where the whole entering class will be quartered together, beginning next fall, the faculty committee in charge has commenced to form its plans for their administration.

An anonymous graduate has endowed a professorship of Latin-American history and economics, to familiarize students with the importance of American interests in South America, and to give to them a knowledge of the history and economic conditions of those countries.

During the Christmas recess Harvard will entertain the Modern Language Association of America, which will hold its thirty-first annual session here, in conjunction with the American Philological association, on the last three days of this month.

University of Michigan. The Michigan Union, which now has a membership of 2,751, is believed to be the largest student union in the country.

The union clubhouse was formally opened on November 17, 1907. The first year's membership list contained 655 names. Besides affording a common meeting place for students and members of the faculty, the union presents the annual student opera, has charge of the football smoker, supports employment bureaus, provides rooms for class and society dinners, and fosters traditions and institutions that belong to the stu-

dent body as a whole. It has outgrown its present quarters, however, and is devoting every energy to the raising of funds with which to build and equip a new clubhouse.

University of California. The daily life of the ancient cliff dwellers is exhibited in the new permanent "Southwestern Indian Hall," just added to the museum of anthropology at the University of California, in San Francisco.

Yale University. Announcement was made last week that the recently completed university laboratories of zoology, comparative anatomy and botany, on the Pierson-Sage square, are to be known as the "Osborn Memorial Laboratories."

Mount Holyoke College. At the last meeting of the Student League, Dean Purinton spoke on the new regulations about domestic work,

tion halls, and argue that there is not a sufficient demand for a union.

Rice Institute. Several university extension lecture courses have already been inaugurated by the Rice Institute, which began this fall its second academic year.

University of Pennsylvania. There are only 97 physically perfect men among the 1355 students in the freshman class in the college department of the University of Pennsylvania, according to statistics compiled by Dr. R. Tait McKenzie, the director of physical education.

Technology. In his annual report to the corporation of the Massachusetts "Tech," President MacLaurin emphasized the need of financial means with which to carry out the plans of the institute along the new and enlarged lines.

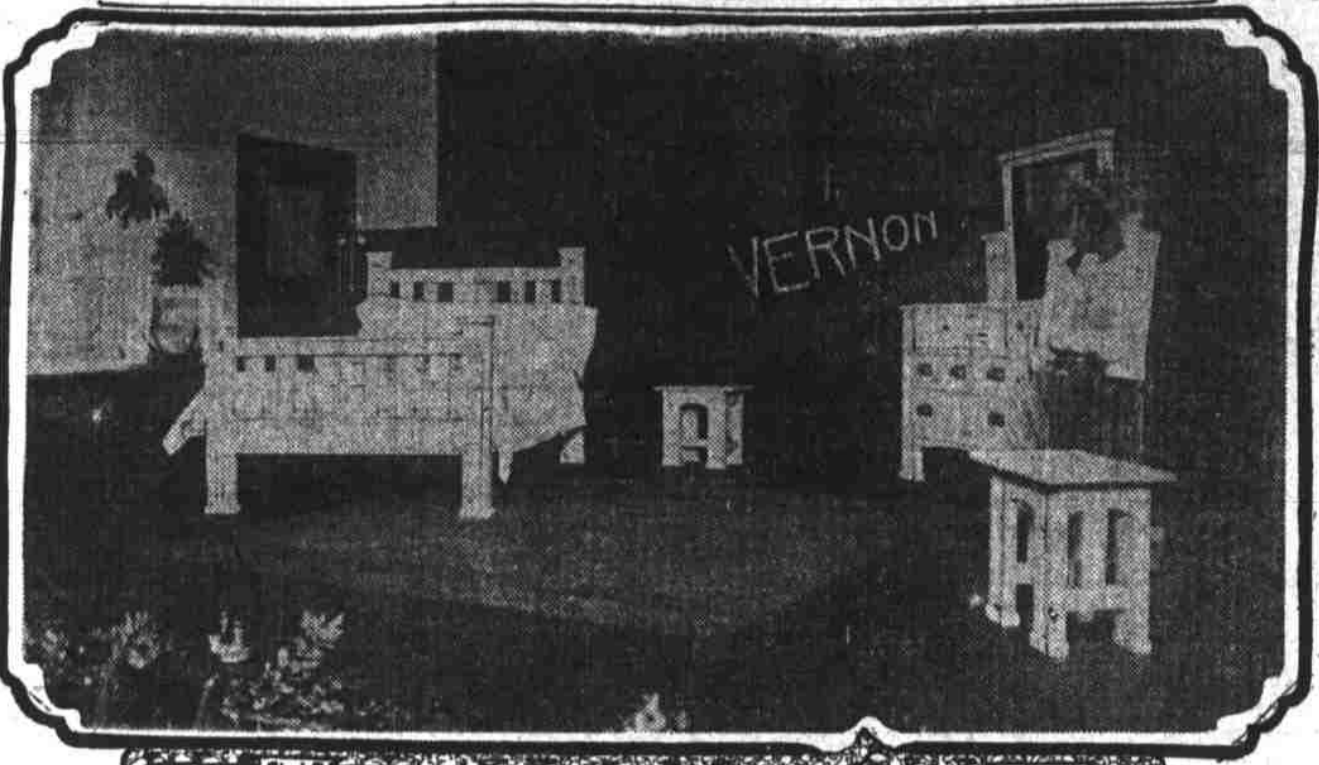
Brown University. A preliminary program of the exercises arranged for the week of October 11, 1914, when the one-hundred and fiftieth anniversary of the founding of Brown university will be observed, has been made public by the committee in charge of the arrangements.

Booths are decorated. There were half a dozen booths in the auditorium, all adorned with Oregon grape, holly, gay red ribbons, and wreaths in honor of the Christmas season, and their counters were loaded with the multitudinous articles which the children had made.

New York University. Mrs. S. Arthur Strong (Eugenie Sellers), assistant director of the British School of Archaeology in Rome, who is in America as the Charles Eliot Norton Memorial lecturer for the Archaeological Institute, lectured last week.

Princeton University. Last week at Princeton was set apart by the Philadelphia society as "Peking Week." The purpose was to bring before the university community the nature, scope, and opportunity of the work being done in Peking by Princeton men in connection with the Peking Young Men's Christian Association.

GIRLS LEARNING TO DRIVE NAILS, AND BOYS ARE PLYING THE NEEDLE



Bedroom furniture made by pupils of the Vernon public schools.

Among other things girls at the Vernon school, Twenty-third and Wygant streets, are learning to hammer nails and the boys are learning to sew.

Friday afternoon and night an exhibit of the regular studies, manual arts training, and sewing was held in the school auditorium and halls and hundreds of parents and friends who visited it were treated to visualized evidence of the many excellent things which the children are taught.

Teacher solves problem. There were a number of articles shown in wood that had been done by girls and done well and in the sewing were displayed some bags and aprons made by a group of youngsters who, looking far into the future when they will be "grown up," believe they might find knowledge of the needle useful in later years.

Booths are decorated. There were half a dozen booths in the auditorium, all adorned with Oregon grape, holly, gay red ribbons, and wreaths in honor of the Christmas season, and their counters were loaded with the multitudinous articles which the children had made.

There were calendars, inlaid trays, skillfully wrought in variegated woods, dainty wearing apparel, benches, chests, necktie and ribbon hangers, sewing

bags, guests' towels with embroidered initials, stool caps, tabarets, tables, hall stands, tabarets, tables, hat stands, fancy work, and whatnot.

The work there displayed was done by the boys and girls in the grades ranging from the fourth to ninth. Most of the sewing had been done by the girls and manual work by the boys but not all.

There were a number of articles shown in wood that had been done by girls and done well and in the sewing were displayed some bags and aprons made by a group of youngsters who, looking far into the future when they will be "grown up," believe they might find knowledge of the needle useful in later years.

Quite incidentally Miss Helen Bennett, teacher in the sixth grade, has solved the "clean hands" problem thanks to sewing. The sewing on display was done by boys in her class.

In the halls of the first and second floor were long tables, loaded down with comprehensive displays of the

studies undertaken by the children of the first, second and third grades. They included exhibits of written lessons, book cover designs in colors, watercolored landscapes, compositions, articles on industries, maps, etc. One enthusiastic tot, an admirer of both Santa Claus and his parents, had on exhibition this "poem" just to show what a fine penman he was:

Santa always remembers us,  
No matter where we are,  
We haven't got any complaint to make  
But Pa and Ma, he misses,  
So we just tied some boxes up  
Filled with Christmas kisses.

Principal Parker in charge. The work of the school is carried on under the direction of William Parker, the principal, who in working up the exhibition was ably assisted by the teachers who are:

William Milne, manual training; Miss Caroline Redding, sewing; Miss Louise McAlpin, Miss Nettie G. Richardson, Miss Queen Lynn, Miss Belle Eade, Miss Edith Nordeen, Miss Helen Bennett, Miss Gertrude Ost, Miss Beulah Kennedy, Miss Laura Kietve, Miss Edith Rogers, Miss Maude Laman, Mrs. Minerva Chamberlain, Miss Ethel Pittenger, Miss Lida Wilson, Miss Imo Clifton, Miss Clara Thompson, Miss Lucy Packer, Miss Grace Leary, Miss Rosa Smith.

appointed consulting architect of New York University at a meeting of the committee on the University Heights property this week. Mr. Day will advise with Frederick Law Olmsted, of Boston, who, as landscape architect, has been working out a plan for the development of the Schway property given to the University by Mrs. Russell Sage. This property has been added to the campus since the original design by Stanford White, and it will be the task of the advisory board to extend and adapt the White plan to the entire 40 acres, so

as to preserve the trees and natural beauties of the estate.

Princeton University. Last week at Princeton was set apart by the Philadelphia society as "Peking Week." The purpose was to bring before the university community the nature, scope, and opportunity of the work being done in Peking by Princeton men in connection with the Peking Young Men's Christian Association.

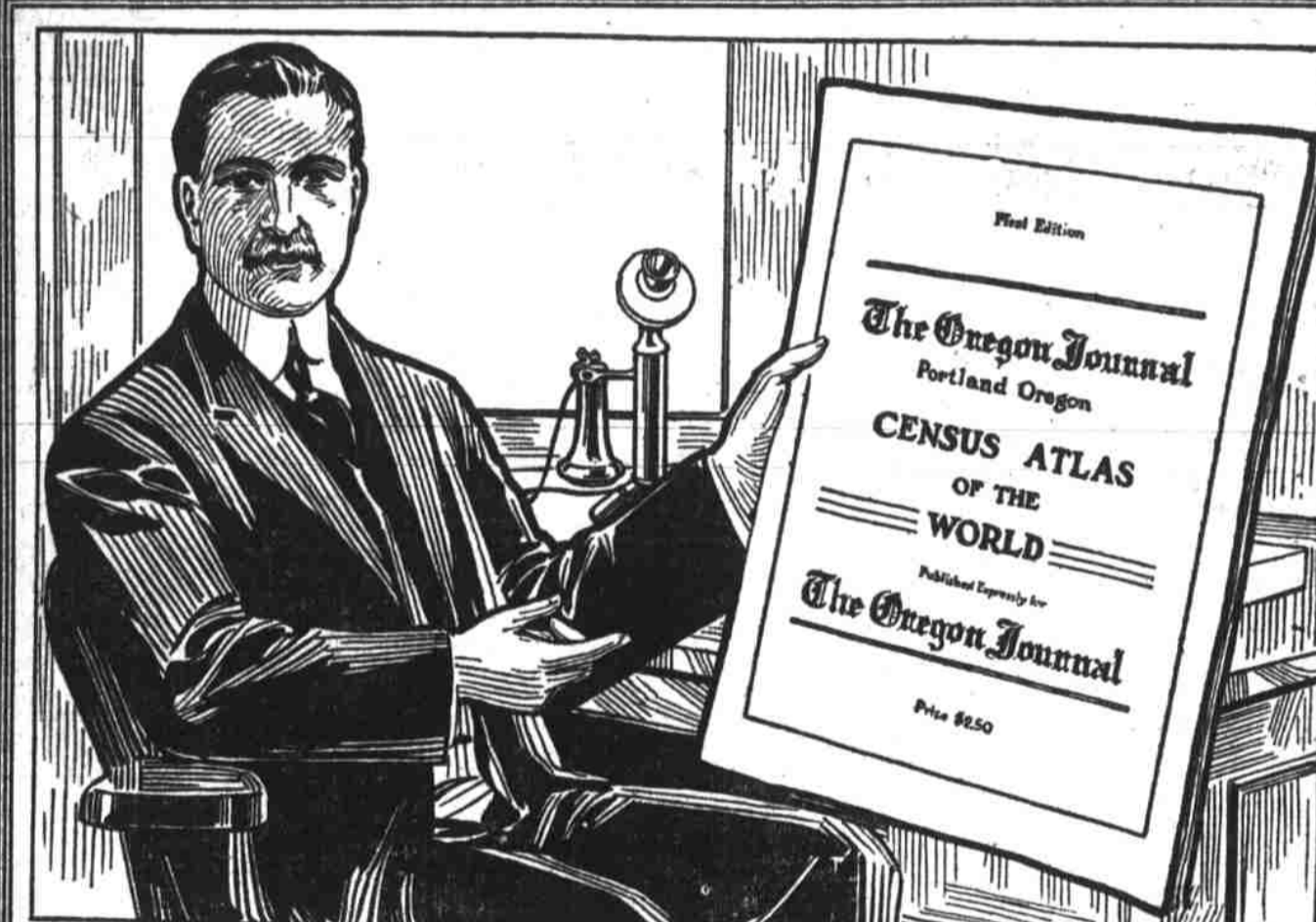
During the Christmas vacation, which begins on December 20, the Triangle club will take an extended trip and present its new musical comedy, "The Pursuit of Priscilla," in six cities. On December 20 the club will give both an afternoon and an evening performance at the Hotel Astor, New York City.

Vassar College. President Taylor will close his term of 27 years of service to Vassar college on the last day of January, 1914. The Associate Alumni appointed a committee last June to provide an opportunity for the Alumni and friends of the college to express to Dr. Taylor their gratitude and affection.

Cornell University. The plant of the New York State College of Agriculture at Cornell University, will hereafter be in use the year around, instead of only for eight months. The faculty has created a third term extending from the close of the regular year in June to its opening in September, covering a time virtually as long as the other two terms.

Turkish College Conference. The educational conference of American colleges in the Turkish empire, which was proposed for the spring of 1913 will be held at the International College, Smyrna, on January 13 and 14 next.

Thomson's Chocolates make appreciated gifts. 80c and \$1.00 the pound at your dealer's. (Adv.)



Here Is the Book You Can't Afford to Be Without Another Day

There Is Only a Limited Edition of the Journal's Atlas and It Will Take Months for More to Be Obtained AT THE LOW PRICE OFFERED, THESE BOOKS WILL DISAPPEAR LIKE SNOW BEFORE A "CHINOOK" WIND. OUR ADVICE IS TO ACT AT THE FIRST OPPORTUNITY—TODAY IF POSSIBLE

Every family, every business house, every school, every railroad, every county and state office, every postoffice, every corner store, every stenographer, clerk, bookkeeper, laborer, shipping clerk, student, minister, professional man and teacher in this locality is going to desire one of these books, and of course some of them will be disappointed.

The maps and information contained in this ATLAS is an education in itself. The Panama and Mexican features are especially timely, and a study should be begun at once of the greatest event that has occurred since the "golden spike" was driven and the West linked to the East by two shining rails of steel stretching across 3000 miles of American soil.

- PANAMA. Maps, history, facts and figures of cost, construction and use. Size of map 20 inches by 25 inches, in colors.
PARCEL POST. Large two-page map of units and zones with reference table of distance and rates. Rates to or from any point in the U. S. can be ascertained.
STATE MAPS. (Oregon, Washington, California, Idaho Montana.) Each map is a large colored plate, new and revised right down to date, showing all towns, railroads, lakes, rivers, mountains, bays, harbors and every natural feature.

- SPECIAL MAPS. Special maps of Alaska, Philippines, Porto Rico, the Arctic and Antarctic regions, Hawaii and Bulgaria.
THE UNITED STATES. A large 24x36 inch colored map of the United States is a special feature. This map shows every town and hamlet that has 200 or more population. All railroads are given. This is one of the most valuable maps in the entire collection.
ASIA. This is a large page map of the largest of all continents. Few of these maps are found except in the most costly atlases.
EUROPE. The late Bulgarian war and the consequent changes make this map a possession to be prized. Very few homes have a good map of Europe.

- JAPAN, KOREA. In view of our trade relations and the mighty development of these countries these maps are timely and important. In addition there are charts of foreign born population, total population and its elements, increase in population, illustration showing increase of immigration from foreign countries and maps showing relative size of U. S. and foreign countries.
CANADA. Our trade relations with Canada and the mighty development this country is undergoing right now together with the large land holdings of American citizens make this map a necessity to every educated man and woman.

- MEXICO. Today Mexico is torn with civil war and it is entirely likely that the United States will intervene and take possession of the entire country. What American citizen wants to be ignorant of the geography of our neighbor.

Oregon Journal "Atlas Coupon"
This coupon, together with 50c, will entitle the bearer to a Journal Atlas if presented at any of the following distributing points:
Journal Business Office... Broadway and Yamhill
Gill's Book Store... Third and Alder
Meier & Frank, Book Dept... 5th and Morrison
Lipman, Wolfe & Co., Book Dept... 5th and Wash.
Olds, Wortman & King, Book Dept... 10th-Morrison
Holtz Drug, Stationery Dept... 5th and Wash.
Owl Drug Co., Book Dept... Broadway and Wash.
Mail orders should be sent direct to The Journal and be accompanied by 13c extra to cover mailing and postage.
Name
Town
State

Delay in getting one of these ATLASSES will be one of the things you will regret. Clip your coupon today and present it with fifty cents at any of The Journal's branch distributing points mentioned in coupon, or at the main Journal office. We will send the ATLAS by mail for fifty cents, one coupon and thirteen cents additional to pay postage. All mail orders should be sent to The Journal direct.