

Women's New Hosiery—A Sale

25c Silk Lisle Hose 18c
—Women's fast black or pure white silk lisle hose, medium weight, made seamless with double tops and heavily spliced heels and toes.

35c Burson Stockings 19c
—The Burson stockings in fine lisle, fast black or tan in light medium weight, seamless with fashioned legs and double garter tops.

50c Silk Lisle Stockings 35c
—Women's stocking of fast black, medium weight silk lisle, extra long and elastic and made with extra heavily spliced toes, soles and heels for long wear.

50c Black Wool Stockings, the Pair 35c
—Women's black wool stockings, in medium or heavy weight, seamless, soft and warm.

Special 25c the Pair
—Wearwell cotton in black or tan. Made of fine, soft yarns, reinforced at all points of wear.

—Women's silk lisle stockings in black, tan or white, an excellent quality.

—Women's cashmere stockings in black, medium or heavy weight. Soft and warm. —First Floor

\$3.50 Picture Frames OF STERLING SILVER

Special \$1.98

—Exceedingly pretty frames of extra heavy sterling silver, complete with glass, oval in shape, plain satin finish or beautifully engraved design. Size 7x5 1/4 inches. Have place for monogram at top. Finished with silk velvet back and stand, and have two silver ball feet. An ideal present for almost any occasion, and the wise shopper will secure some of these now for holiday use. —First Floor

Fetching Boudoir Caps

Very Special 50c

—Bewitching caps to frame pretty faces made of softest shadow lace, of dainty net, of pompadour lawn, or crepe and messaline combined with insertions of shadow lace. Trimmed with Frenchy little bows and chiffon roses. All the wanted colors, soft pink and blues, so universally becoming. Maize, oleander and lavender.

—By the way, try tucking a bit of sachet powder in the bows and behind the roses of these caps. It will leave your hair delightfully fragrant for hours after. —Fourth Floor



Handsome Lace Curtain Samples

REPRESENTING THE ENTIRE SHOWROOM SAMPLES OF A LARGE AND RENOWNED MANUFACTURER

Regular \$1.50 to \$2.50 Each

Very Special 39c Each

—Scrim curtains, filet curtains and fine net curtains. In white, cream or Arabian color.

—Through a clever transaction of our buyer, we were enabled to secure the entire samples of this famous manufacturer. Just such curtains as these will fit nicely those small windows that are put into so many homes these days. They are 1 1/2 to 1 3/4 yards long by 40 to 60 inches wide. —Fifth Floor

Sale Now on of Pure Wool Blankets

Supply your Winter needs—All prices—All kinds

The French Lecture Conducted by Prof. V. B. De Lory
Will Be Held in the Phonograph Hall Adjoining the Book Shop as Usual, Friday Morning, From 11 to 12.

The Subject—Rostrand's New Play "Bon Petit Diable"

—This is the fourth of a Series of Free Lectures which we are conducting twice a week.

Lipman Wolfe & Co

"Merchandise of Merit Only"

Popular Sheet Music, Special, 2 Sheets for 25c

—"Till Change the Shadows to Sunshine"—"On a Good Old-Time Straw Ride"—"Sailing Down the Chesapeake Bay"—"You Can't Stop Me From Loving You"—"Melancholy"—"Moonlight on the Mississippi"—"You Make Me Love You"—"I Don't Want To"—"You Must Be Lonesome"—"Everybody's Doing It at the Seaside"—"Peg O' My Heart"—"Apple Blossom Time in Normandy." —Basement

Between Ourselves

This Store Is A Public Servant

—It collects meritorious goods only and prices them fairly.

—It uses the world for its field to obtain its merchandise.

—It refuses to accept anything within its doors that will not add credit to the name that guarantees it.

—It strives to serve the public that seeks desirable goods rather than a cheap price.

—DEPENDABLE, SERVICEABLE, WORTHY MERCHANDISE.

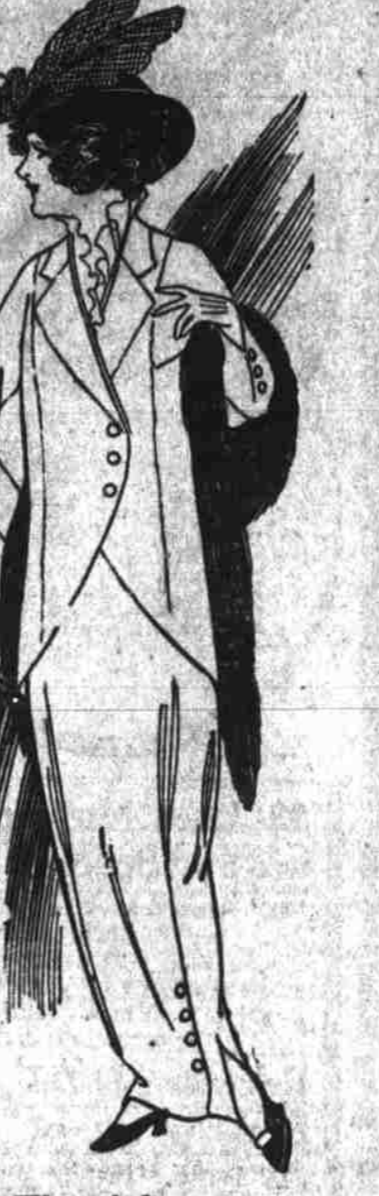
—The Turkish families do not use finger bowls after their dinners, but they do not have sticky fingers either. The servant passes from one member of the family to another with a brass pot of perfumed water and a large brass bowl. He pours the water gently over the fingers and lets the water drip into the bowl. We have some of these novel finger bowls, in our Sixth Floor Art Department. Made of hammered brass in antique design. Complete with brass tabouret to match. On the same floor will also be found a large number of novel objects from almost every country under the sun. A visit to this floor will solve your gift-giving difficulties.

Extraordinary Transactions Yield Rare Suit Offerings at \$25.00

—The art of being well dressed is to make your individuality stand out above that of the other ninety-nine in the hundred. Women of Portland are finding this easiest accomplished in our strictly tailored models, whose effectiveness depends on up-to-the-minute lines and excellent construction.

—These smart three-button cutaway suits are of men's wear serge, with belted back, finished with braid, buttons and blind button holes. The coat is supplied with dress shields. Side gores of the skirt are gathered into the broadened front panel, giving the extremely new pag-top effect. Colors black, navy, and brown.

—Another model shown, a four-button cutaway style, finished with slot seams and self-covered buttons. Excellent quality men's wear serge, in brown, navy and black. Coat is Skinner satin lined and provided with dress shields. The skirt is draped to the side front with dart tucks and finished with self-covered buttons.



Clever New Coats at \$16.50 That Combine Style and Economy

—Style and economy do not often get within speaking distance, but we think you will admit we have combined the two in these stunning coats. They are made of the new two-toned diagonal boucle, with deep velvet inlaid collar and wide reverses. Sleeves with smart deep cuffs are set into wide armholes. Fastened with two fancy buttons at the top of a wide fold, which deepens in the back to form a panel in pointed outline, trimmed with art buttons. A model that it is very unusual to find in a garment at this price. —Third Floor

Knit Underwear That's Seasonable for Women—Greatly Below Regular

75c and 90c Vests Special 55c
—Women's Swiss ribbed lisle thread and silk lisle vests in white or pink. Low or medium weights. Low neck, plain or with pretty hand-crocheted yokes in regular or extra sizes.

50c and 65c Vests Special 39c
—Kaysor brand white lisle and silk lisle vests, all sizes. Either plain low neck, sleeveless style, or finished with pretty crocheted yokes.

75c and \$1.00 Vests Special 65c
—Kaysor brand silk lisle vests, low neck, sleeveless, in white. Made with the French band tops or in a variety of patterns in pretty Irish hand-crochet.

65c Vests, or Tights, Special 48c
—Women's vests of medium or heavy weight, fine ribbed, cotton, made with high neck and long sleeves. Ankle length tights to match.

65c and 75c Union Suits Special 50c
—Women's union suits made of medium weight fine ribbed cotton in pure white. In low or high neck, or the popular Dutch neck. Knee or ankle length.

\$1.25 Union Suits Special 98c
—Women's union suits of medium or heavy weight fine ribbed pure white cotton in long sleeves, ankle length style. —Fourth Floor

\$2.50 to \$2.75 House Dresses

Very Special \$1.59

—An attractive dress in fine quality chambray, percale or gingham, stripes, checks, plain colors and plaid effects. The convenient three-quarter length sleeves. Dainty embroidery collar in sailor effect and turnback cuffs, make a practical morning toilet for the most fastidious.

Flannelette House Dresses Special 98c

—For these pinching mornings, a most comfortable dress is made of black and white flannelette, neatly finished with black braid, military collar and long sleeves.

"Utility" House Dresses \$1.35

—The most practical house dress ever invented is the one we have named "Utility." The sides fold over, fasten the inside and the outside belt, and your toilet is complete. They are made on generous lines and can be used as a cover-all apron, affording perfect protection for the many times it is necessary to do housework in a street dress. —Fourth Floor



The Advantages of Purchasing Your Linens at Home Instead of Abroad

—said one of the season's brides in the linen department yesterday: "These Madeira linens are as fine and cheaper than anything I found abroad." As a matter of fact, our imported linens are bought by connoisseurs of linens. Every thread of the linen and every stitch of the embroidery is closely scrutinized. And, best of all, the immense quantities we import enable us to offer you fine linens at practically the same prices you would pay in the "old country."

Madira Luncheon Set \$7.00 the Set

—This handsome set consists of 13 pieces, exquisitely embroidered in effective designs. There are six six-inch doilies, six 10-inch doilies and a large 24-inch centerpiece.

Very Special Set, \$3.49

—New eyelet embroidered luncheon set neatly scalloped and worked in pretty effective patterns. Consists of six 6-inch doilies, six 9-inch doilies, and one large 24-inch centerpiece.

Tea or Luncheon Napkins Very Special, \$2.98 Dozen

—These dainty napkins are of the purest linen, scalloped edge and hand-embroidered initial wreath in the corner worked in a new eyelet design. —Basement

Boys' New Suits Just Received Special \$5.00

Women's Shoes Regular \$3.50 Pair Special \$1.95

—We have about 300 pairs of women's boots in broken sizes, including patent calf and dull calf, blucher lace shoes, tan calf button styles. These are all well made, reliable shoes of first quality, but on account of the lines of sizes being incomplete we are going to offer the entire lot Friday at \$1.95 pair. —Basement

Nadia Corsets A Sale

For Stout Figures

\$1.75 Nadia Models \$1.19

—Made with medium low bust, extremely long over hips and back, reinforced over abdomen. Sizes from 22 to 36. Made of an excellent quality coutil, and finished with neat embroidery, trim and three pairs of hose supporters.

For Slender Figures

\$1.75 Nadia Models \$1.19

—Made of good quality batiste in extremely low bust style, long hip and back. Neatly finished with lace and ribbon beading, and two pairs of good hose supporters.

\$2.50 Nadia Models \$1.98

—This is an exceptionally good corset for the slender figure. Made of strong coutil in low bust, long over hips and back. Very pliable with but little boning, and no bones over hip. Very neatly finished with embroidery in hand embroidered effect. —Fourth Floor



The Smartest Autumn Millinery

As Depicted in 218 Models

Created of Velvet, Plush, Velour and Zibeline

Regular Prices \$7.50 to \$12.50

Friday \$3.50

—Our millinery buyer so skillfully and so advantageously manipulated this purchase that we are able to price these hats exceptionally low—in fact, lower than we have ever seen hats of equal worth ever priced before.

—There is not a style in vogue today that is not represented in this assortment. While the price is modest the style touches are duplicated from imported hats, in many instances.

—They come in black and colors, in small and medium shapes. —Second Floor

Girls' New \$15.00 Sports Coats Special \$12.95

—These coats have just been received from New York, where sport coats are practically the only coats worn by misses for general wear. Made of heavy plaid or checked back double texture material in the new English box style with wide belt around the hips and Raglan sleeves. Collar, cuffs and belt of plaided material to match lining. Convertible collars. Colors are navy, brown, gray, tan and fancy dark mixtures. Finished with large novelty buttons to match in colorings. —Fourth Floor



Women's \$3.75 Sweaters, Special \$3

—Pure worsted, plaid coat sweaters, made in the "Ruffneck" style—soft and warm. Full size. In the new shade of cardinal, light gray and pure white.

\$7.50 Women's Sweaters, Special \$5

—"Ruffneck" coat style sweaters of fine pure Australian wool in the popular Cardigan stitch. Hand-trimmed and finished with smoked pearl buttons. In pure white, and pretty shades of cardinal and light gray. —Fourth Floor

Bathroom Fixtures Nickel Plated Specially Priced

40c Towel Racks, 15-inch 29c
45c Towel Racks, 18-inch 35c
50c Towel Racks, 21-inch 39c
75c Towel Racks, ex. heavy 69c
\$1.25 Towel Racks, ex. heavy on sale at 98c
50c Tub Soap Dishes 39c
\$1 Plate Glass Shelves, 18-inch heavy nickel brackets 69c
\$1.50 Plate Glass Shelves, 24-inch heavy nickel brackets 98c
85c Faucet Soap Dishes 69c
20c Nickel Robe Hooks 12c
35c Nickel Robe Hooks 19c
25c Tooth Brush Holders 19c
40c Tooth Brush Holders 29c
\$1 Oak Bath Tub Seats 69c
\$1.50 White Enamel Bath Tub Seats, at only 98c
75c Combination Tumbler and Tooth Brush Holders 49c
50c Toilet Paper Rollers 39c
25c Toilet Paper Rollers 15c

TOILET PAPER

15c Sanitary Toilet Paper, 9c the roll, the dozen \$1.00
5c Toilet Paper, the roll 3c the dozen 35c
25c Toilet Paper, white tissue, the roll, 17c; the dozen \$2.00

\$1.50 AND \$2.50 HOT WATER BOTTLES Special, 98c Each

—Hot water bottles, made of best weight rubber with reinforced seams and neck. Two and three-quart capacity.

\$1.25 Fountain Syringes 79c

—Made of maroon rubber, of excellent quality, no seam, rapid flow tubing, 2 or 3-quart capacity.

\$1.50 Fountain Syringes 98c

—Best white rubber, double seamed, screw pipes, regular length tubing. Will give exceptional service.

\$2.00 Combination Hot Water Bottle and Syringe \$1.39

—Made of first quality rubber, two and three-quart capacity. Extra long tubing.

35c Regular Length Rubber Tubing, Special 19c

75c Atomizers, Special 49c

—Made with sanitary metal spray device.

75c Douches, Special 49c

—Made of all rubber, white only.

\$2.00 Sanitary Douches Sprays, on sale at only \$1.19

25c Rubber Chin Reducers 19c

50c Rubber Sanitary Protectors on sale at only 39c

50c Rubber Gloves for household use; best red rubber 39c

10c Glass Nasal Douches 5c

25c Glass Nasal Douches 15c