

ADVOCATE A DISTRICT PLAN OF REPRESENTING OREGON AT 1915 FAIR

Space Allotment at San Francisco Not Large Enough for County Plan.

Oregon's representation at the Panama-Pacific exposition at San Francisco in 1915 will not be by counties, but by districts in a tentative plan launched at Salem during state fair week in earnest.

J. S. Van Winkle, president of the Albany Commercial club, called the meeting to discuss Oregon's contribution of products to the fair, and representatives of Lane, Benton, Linn and Polk counties responded. It was pointed out that Oregon's allotted space in the Agricultural building is so small that the different counties must be willing to subordinate themselves if any sort of a creditable showing is made.

Accordingly, the plan of dividing the state into five units or districts was hit upon. The Willamette valley unit will be composed of Clackamas, Marion, Linn, Benton and Lane counties. From Douglas county south would include the Southern Oregon unit, and there would also be a Central Oregon unit, and an Eastern Oregon and a Columbia river unit. The choicest products of each of these would be arranged, with a man at attendance representing the whole unit, who would tell the visitors that the products on view were grown, not in this county or that county but in this or that district.

Another meeting will be held at Albany, October 30, when it is probable that representatives of the county commissioners of every county of the Willamette valley will attend.

The plan is to secure the financial cooperation of the various commissioners in securing and placing the exhibits, and the commissioners invited to the Albany meeting will be asked to include this item in their budgets for next year's county expenses.

Arrangements are being made with the Southern Pacific, the Portland, Eugene & Eastern and the Oregon Electric railways for stopover privileges good at any town in the Willamette valley on all tickets purchased in the west, so the visitor at the fair, having seen the exhibits in the Oregon booth, may see for himself just where the products grew.

The cooperation plan was worked successfully at the Minneapolis land show last year, when Lane, Linn and Benton counties joined energies for a single exhibit. This proved a saving of expense at a much more creditable showing than had each county sought to force attention to its own products.

The Oregon commissioners will attend the Albany meeting and a general policy probably will be declared for Oregon's display in the Agricultural building.

TAKES UP PASTORATE DUTIES AT CLATSOP
The Rev. Charles T. McPherson, formerly pastor of Trinity M. E. church, will enter into his new pastorate at Clatskanie tomorrow. The transfer to a new field was made at the recent session of the Oregon conference at Eugene, at Mr. McPherson's request. "I am tired," he said, "and I want to go to a smaller place to rest. The congregation at Clatskanie numbers between 150 and 200 and the church is out of debt. There is an opportunity for further growth and good work along the line of social service."

The Rev. Mr. McPherson has a reputation in the Methodist denomination as a church builder. He came to the Oregon conference 14 years ago and was first assigned to Clatsop county where in one year he built two churches, one at Seaside and the other at New Astoria. Then came one year at Junction City, one year at University Park, one year at Canby, two years at Marshfield, one year at Medford, one year at Estacada, four years at Epworth church, Portland, and two years at Trinity church.

All of these churches he either found without a church and parsonage or in debt. He left them with new churches and parsonages and all out of debt. For the first time during his ministry in Oregon he goes to a congregation that has a good church building and has no indebtedness.

\$160 violins, \$78; \$4 ones, \$1.95; \$10 mandolins, \$4.25; \$8 guitars, \$4.25; \$8 banjos, \$5.50; \$12.50 cornets, \$1.25 during Graves Music Co. Removal Sale, 111 Fourth street. (Adv.)

Bankrupt Peters' Furniture

GREAT CHANCE FOR THOSE STARTING HOUSEKEEPING

63 Fifth St. CORNER PINE

AT THE Y. W. C. A.



Top—(Photograph by Studio de Luxe)—Miss Mabel C. Fraley, teacher of the common school branches.

Bottom—Mrs. Josephine Lisher, head of department of foreign speaking girls.

As the head of the department for foreign speaking girls, the Y. W. C. A. has secured Mrs. Josephine Lisher. Mrs. Lisher has had Normal school training in Massachusetts and taught for seven years in Norwalk, Conn., before coming to Portland. She conducted considerable institute work last year in both Oregon and Washington, and at the State Teachers' association last Christmas, she conducted the Montessori department. She is especially successful in the training of foreign speaking people and this is a rare opportunity for foreign young women to acquaint themselves with the English language.

Miss Mabel C. Fraley has been chosen to teach the common school branches for the association this winter. Miss Fraley, who has resided in Portland five years, took preparatory work at Simpson college, Indiana, Iowa, and later was graduated in music from the Highland Park college of Des Moines. Since coming west she has spent two years at the Willamette University.

The Sunday Vesper services of the Y. W. C. A. will begin this afternoon at 4:30 o'clock in the auditorium of the Association building, Rev. W. W. Young speaking.

CLATSOP COUNTY FAIR TO OPEN ON OCT. 9

Exposition at Gearhart Will Be Better This Year Than Ever.

Thursday, October 9, the Clatsop county fair will open in the new fair buildings at Gearhart, and will continue for three days, closing Saturday, October 11. The fair will be held under the auspices of the Lower Columbia Agricultural association, and it is probable that some exhibits will be made from the counties adjoining Clatsop.

At the meeting of the Clatsop county court held last week a fair board was appointed to have charge of the \$1500 appropriated by the last legislature for fair purposes in that county. The board is composed of Charles H. Alderman of Astoria, W. G. Brown of Clifton and Andrew Johnson of the Young's river district.

The fair will be bigger and better than ever. Special prizes will be awarded in agriculture, horticulture, livestock, dairy, poultry, domestic sciences, art, juvenile department and a juvenile poultry show.

This will be the third annual fair held under the auspices of the Lower Columbia Agricultural association at Gearhart. Arrangements have been made for fine displays of the agricultural, horticultural, livestock and dairy products of the rich delta and Clatsop Plains districts of Clatsop and adjoining counties.

The announcement has been made that special rates will be made from all Lower Columbia river points to the fair.

Agricultural and horticultural experts from the Oregon Agricultural college will attend the fair Friday, the 10th, and will deliver lectures on subjects of interest to Lower Columbia river farmers.

Tells How to Do It. The best way is to look everywhere for the best player piano to be had at whatever price you wish to invest. Then come to the big piano house where the exact same grade and quality will be found for just about 25 per cent less and the player pianos being sold for banker prices can be had for exactly half price. It's almost too good to be true, but it's true—that's why so many people are buying here each day. See announcement page 12, section one, this issue, under heading, "Made in the Home" etc. (Adv.)

COLLEGIATE ALUMNAE HAS INITIAL MEETING

Business Session at Library Follows Luncheon; Scope to Be Broadened.

The Association of Collegiate Alumnae held its initial meeting of the season yesterday. The meeting was preceded by a luncheon given at Oida, Wortman & King's, for which covers were laid for 20. After the luncheon the association adjourned to one of the lecture rooms in the library where a most interesting session was held.

At the business session it was decided to ask all who wished to join the association to send their names to Mrs. G. M. Woodley, 250 North Twenty-ninth street, telephone, Main 5224. An amendment was discussed looking toward the broadening of the scope of the association.

Miss Helen Davis, one of the field secretaries of the Y. W. C. A., will visit the coast in November and will address the meeting of the association while in Portland. Governor West will present his prison reform work at the November meeting. Plans were discussed for the organization of several more camp fire organizations; there are already three camp fires among the college women.

The work of Miss Manley, a graduate of the University of Indiana, who has recently been put in charge of the deficient children of the Portland public schools, was presented to the meeting. Miss Elizabeth Reed, an expert dietitian of Reed college, gave a most interesting talk on school lunches, the purpose of which was to instruct members for work in the part-teachers' circles, with which the association expects to identify itself this year. About 40 women attended the meeting. Miss Harriet Wood, presided.

Many Good Jobs Offered.
In the last seven days 194 employers have offered positions in the classified columns of the Journal; 114 of these ads were for men and 82 for women; the positions ranged from saw mill laborer to city solicitor for a cash and door factory, from marking merchandise in a large department store to acting as housekeeper. Did you know of these jobs?
In the same seven days, 161 openings were advertised for men and women with small capital; were you awake to these opportunities?
Whatever work you want, you can't afford to pass these opportunities by; if you do, a wiser man will snap them up. There are hundreds of these chances in the classified pages of the Journal—meet your chance half way.

Public Library Notes

The Albina branch library, 350 Knott street, will be open on Sundays from 2 to 6 p. m., for reading, beginning today.
The North Portland branch library, 190 East Killingsworth avenue, is now open all day on Saturdays from 9 a. m. to 3:30 p. m.
The children's department at the central library, Tenth and Yamhill streets,

now remains open on Saturday evenings until 8:30.
Programs for the course of lectures on "Evolution of Liberty," to be given by Dr. C. H. Chapman in the library hall, may now be obtained at the information desk in the lobby of the new public library building, Tenth and Yamhill streets. This is a course of ten lectures to be given on Wednesday evenings, beginning October 15. These lectures are free and all interested are cordially invited to attend.

The opening of the new public library building has brought to the people of Portland the value of the library as never before. More new names have been added to the membership list this past month than ever before. The circulation of books for home use increases constantly and the reference and technical departments and periodical room are comfortably filled at all hours of the day and night with quiet readers and students. The demand for com-

puter rooms and lecture rooms increases and it is most gratifying to be able to grant space for these civic, educational and philanthropic organizations that are doing so much for the welfare of Portland.

5 VIVI-SECTIONISTS INDICTED FOR CRUELTY
Philadelphia, Oct. 4.—Five vivisectionists at the University of Pennsylvania were indicted yesterday for cruelty to animals.

Talk Machine Price Cut
The rules of talking machine manufacturers prohibit the selling of instruments for less than arbitrarily established prices but nevertheless the purchasing power of an institution like Elfers Music House manages to secure advantages which are being offered on page 14, section one, this issue, under the heading, "It Takes Music," etc. (Adv.)

Can You Judge An Oriental Rug?
The quality, make, texture, and true value. If you can you are overlooking something you would appreciate, for the most exceptional bargains are being offered at this

Auction Sale

If you cannot judge these things you may be sure that it is an exceptional opportunity for you too. For every piece placed on sale is absolutely guaranteed to be as we say. There is nothing more beautiful in a home than well selected rugs—there is nothing which adds so much to the whole atmosphere.

We are not offering you these wonderful creations from choice or sentiment, but because we positively have to raise a sum sufficient to tide us over for a while. We are not considering profit. Pick out the rug you like and name your own price.

The values of these rugs range from \$35.00 to \$6500.00. All sizes and every shade and variety.

Atiyeh Bros.

Alder and Tenth Streets
Sale Hours 10:30 A. M., 2 and 8:00 P. M.

MADAM, you will find here a collection of tailored apparel representing the best products of the world's looms and styled in accordance with Fashion's approved decrees.

Suits of surpassing loveliness, in every proper fabric for Fall and Winter wearing, the graceful lines and thorough workmanship being revealed in each individual model.

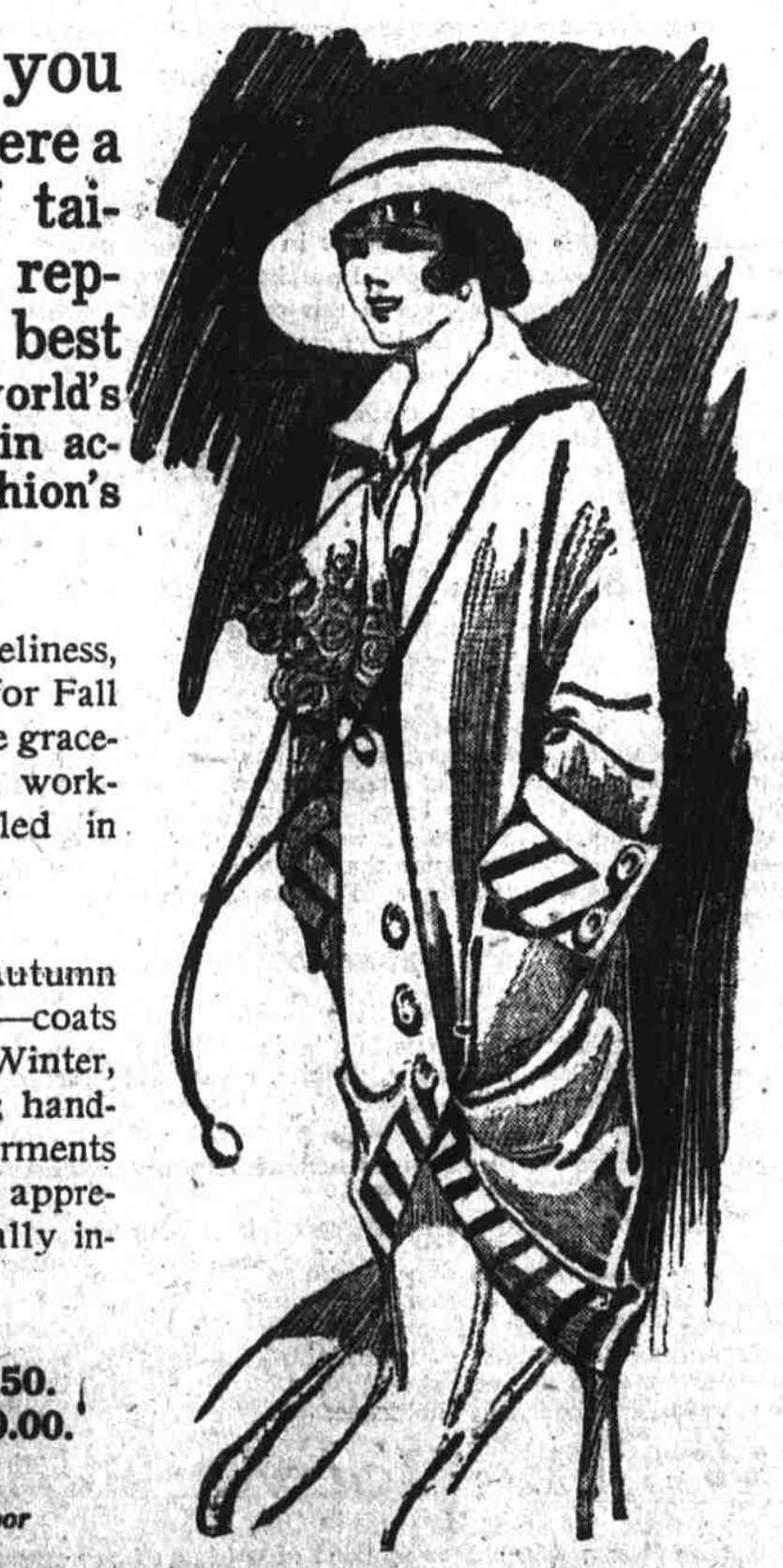
Coats for the cool Autumn mornings and evenings—coats for the rainy days of Winter, in a bewildering array; handsomely fashioned garments that must be seen to be appreciated. You are cordially invited.

—Suits \$19.50 to \$58.50.
—Coats \$15.00 to \$40.00.

Ladies' Store Third Floor

BEN SELLING

MORRISON STREET AT FOURTH



No Pain No More Fear of the Dental Chair No Pain

"NOR A HIGH DENTAL BILL"



EXPERT SERVICE LOWEST PRICES

All work warranted 10 years. Best bank references. We replace teeth without plates which can not be told from your own. We give absolutely reliable and up-to-date dentistry which will please you not only in looks but in active service. Our artificial teeth are guaranteed to fit, to stick to your mouth and to feel comfortable.

Crown and Bridge Specialists

Good Plates	\$5.00
Porcelain Crowns	\$3.50 to \$5.00
Gold Fillings	\$1.00
22-K Gold Crowns	\$3.50 to \$5.00
22-K Gold Bridge	\$3.50 to \$5.00
Extracting	50c

We are always busy because our success is due to the fact that we do the very best work at very lowest prices.

ELECTRO DENTAL PARLORS

RELIABLE PAINLESS DENTISTS
OPEN EVERY EVENING 12 STORY BUILDING
E. G. Auspland, D. D. S., Manager
313 1/2 Washington Street, Corner Sixth