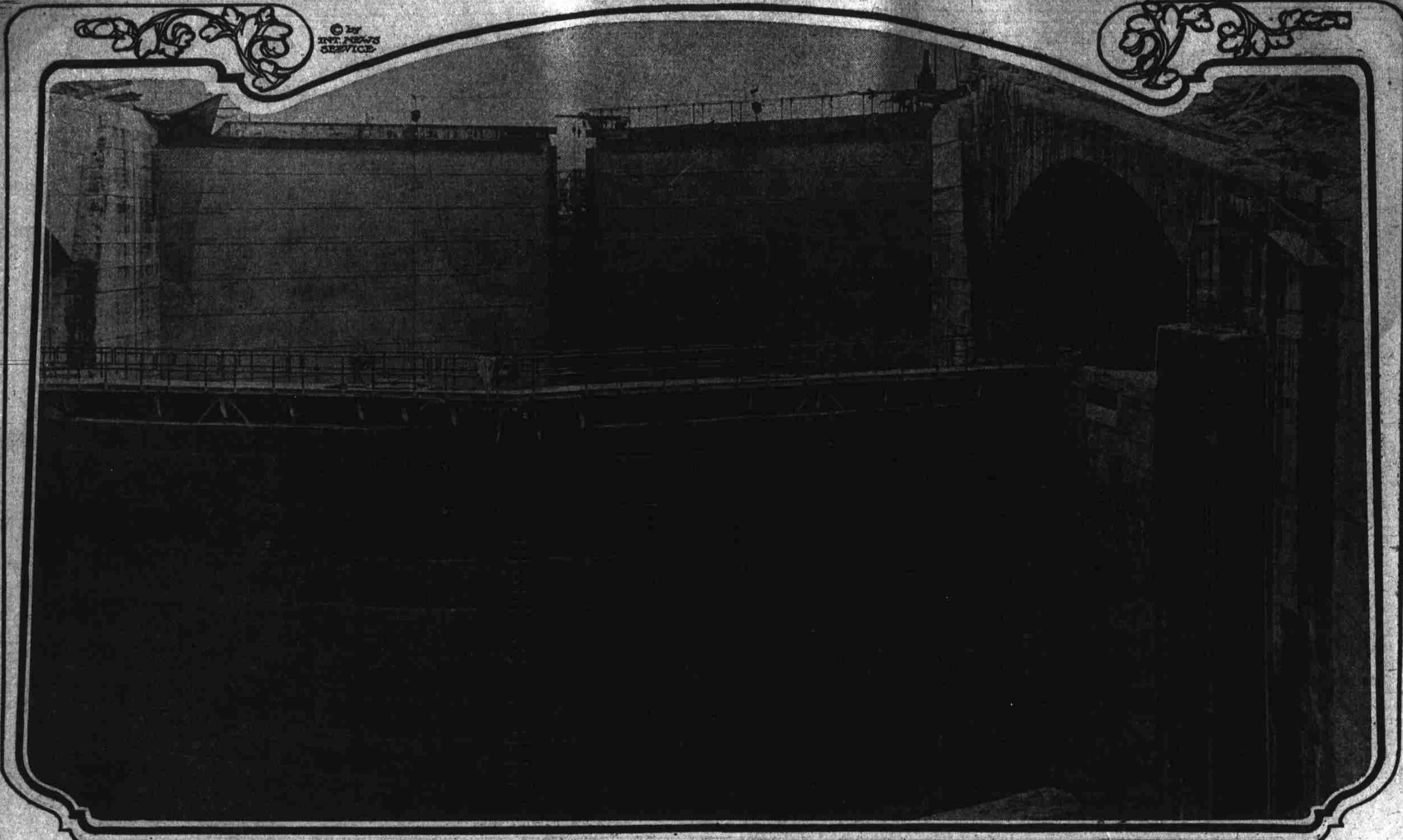
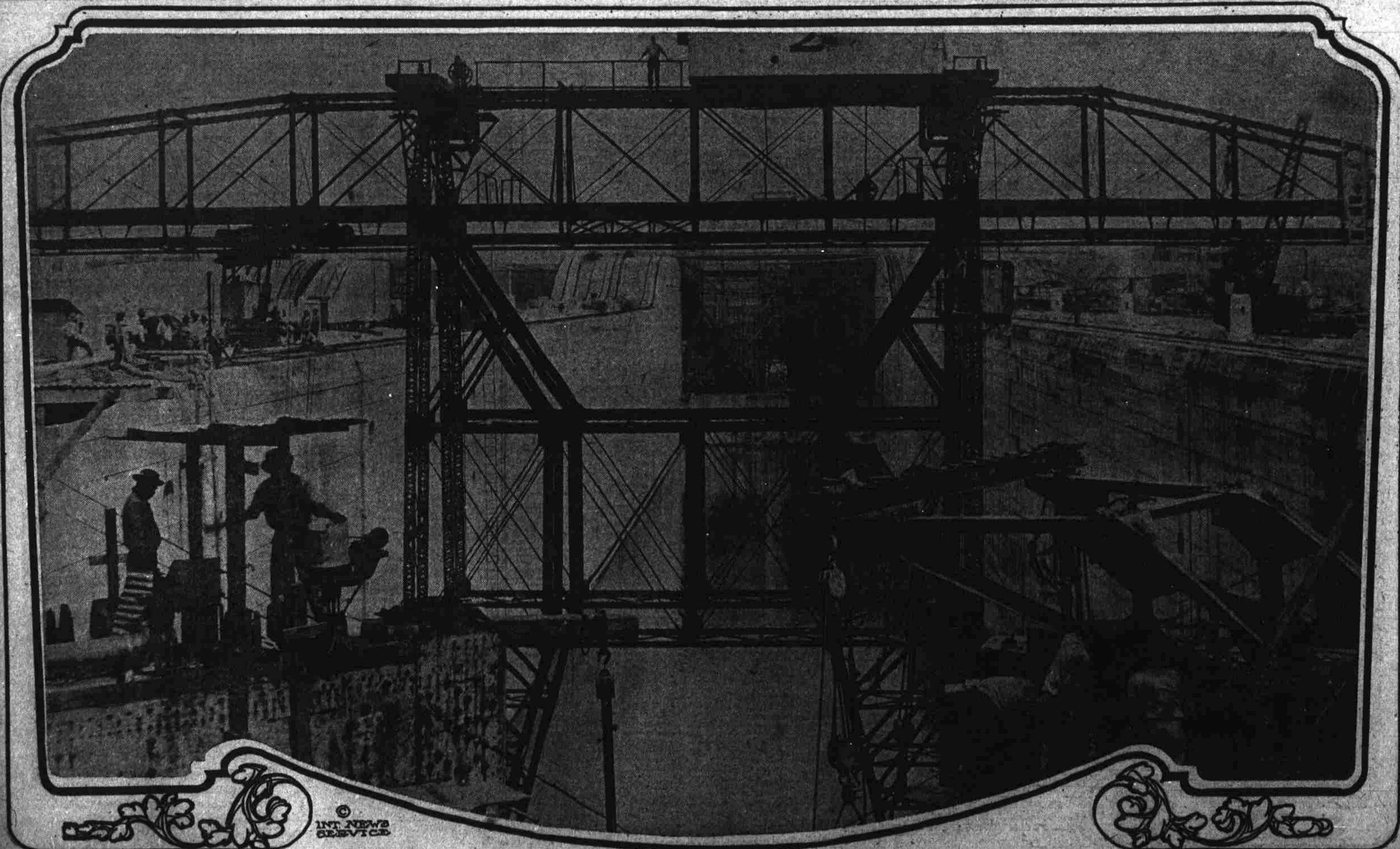


**THIS VIEW OF PEDRO MIGUEL LOCK SHOWS GATES USED IN LOCK CONSTRUCTION**



Gigantic Pedro Miguel lock. In each lock along the canal there is a double set of gates. In the foreground of this picture the safety gates can be seen.

**VIEW OF MIRAFLORES LOCKS AFTER WATER HAD BEEN ADMITTED FOR FIRST TIME**



These locks, near the Pacific end of the canal, will lift and lower vessels to and from Miraflores Lake which is 54 1/2 feet above sea level.