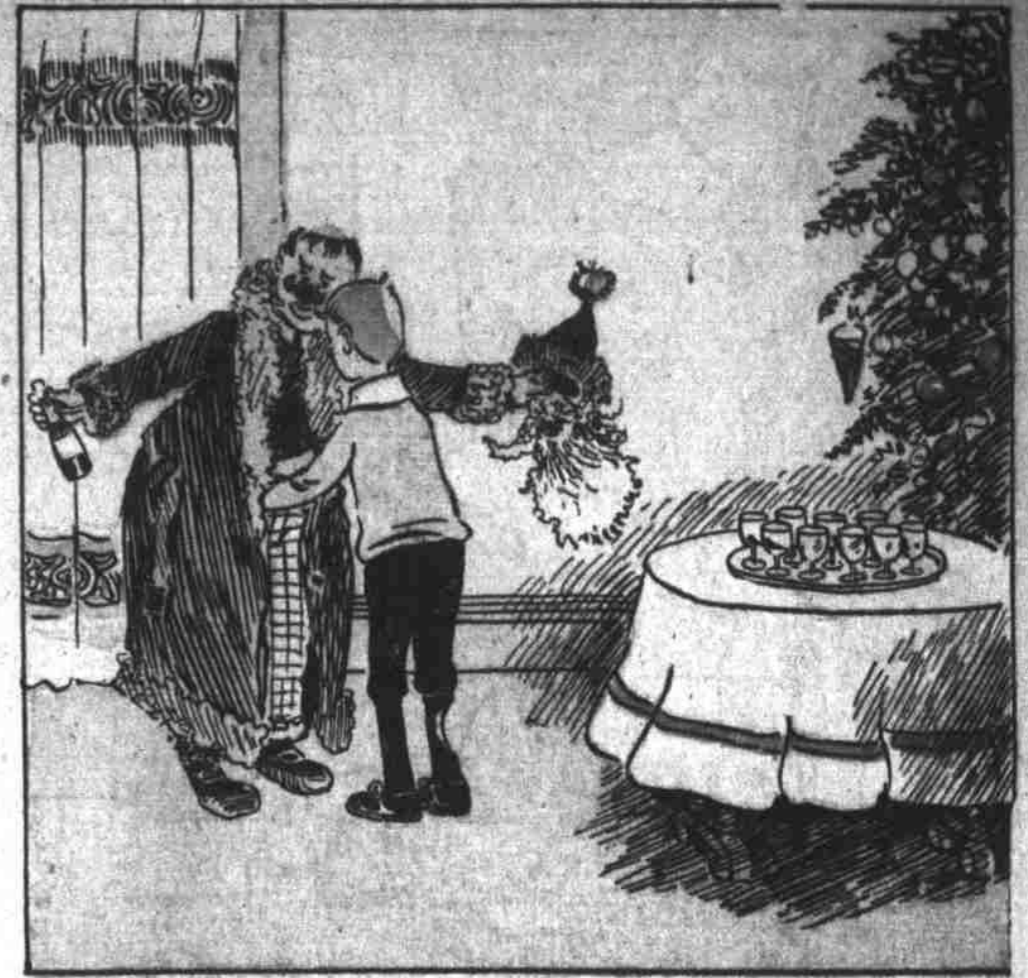
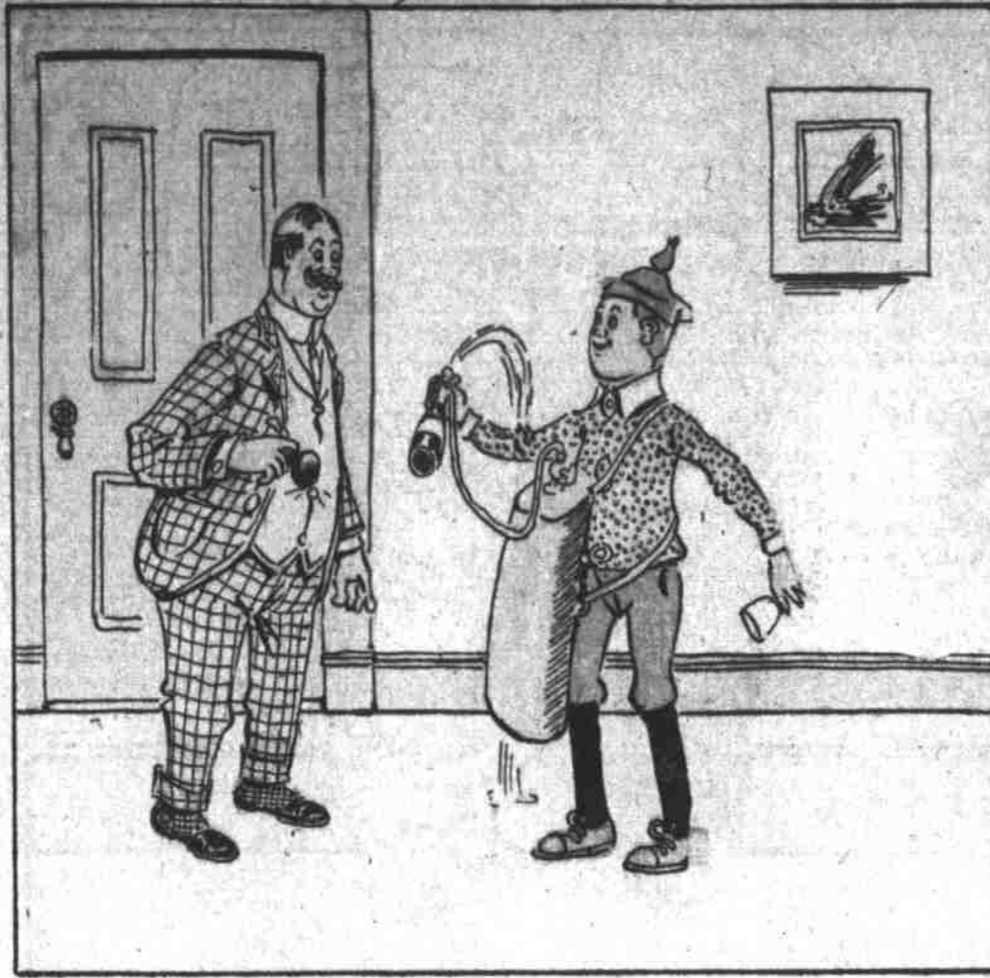


# WILLIE'S CHRISTMAS NOVELTY GOES WRONG



DEAR TOMMY: Brother Reggie played Santa Claus for us this year, and I made him a magic bottle like this diagram. He was making a big hit with it, when he lost control of the siphon and made an awful mess of it! Wishing you a merry Christmas!  
Yours, etc., WILLIE.



# FOR HE'S A JOLLY GOOD FELLOW—UNTIL HE GETS HOME

