

LAKEVIEW MOTOR TRIP IS AROUSING A DEEP INTEREST

Inquiries for Reservations for Tour Pouring in Rapidly—Different Routes; Reasonable Rates to Be Provided.

Manager C. C. Chapman, of the promotion department of the Portland Commercial club, says there is an enormous inquiry for reservations for the auto trip to Lakeview and through central Oregon, the details for which have just been outlined.

"We issued circulars yesterday afternoon," said Mr. Chapman, "and this morning our office force was busy answering telephone calls. There is no limit placed on the number that can be taken and I look for the largest excursion of the kind ever arranged under the auspices of the club."

"The circular sent out yesterday gives the routes and terms and I don't think anything more attractive was ever offered. To make either of those trips will be not only interesting but tremendously instructive as well, for it will give first hand information about the wonderful interior of the state."

"The rates have been made as reasonable as possible and the service will be the very best. No effort will be spared to make the excursion the most successful ever undertaken in the state. It will be novel, too, in that the greater distance will be made by auto."

Lakeview is the objective point of the Oregon Development league. In view of the fact that practically all parts of the state will be presented, the meeting may be regarded as a meeting of the Oregon Development league, for all sections will have representatives there and questions of interest to all parts of the state will be discussed.

Bill Hanley of Burns is president of the Central Oregon Development league, and he is giving all of his attention that he possibly can to make the meeting a grand success. All of the central part of the state is aroused and the heartiest of welcome will be extended everywhere by the settlers and the townspeople to the travelers. Mr. Chapman says their path will be figuratively strewn with roses.

Following are the routes and the terms:

Requires Nine Days.
Total expense, \$98.50; in automobiles, 609.5 miles; by rail, Portland to Bend, August 18; by automobile, Bend to Lakeview, via LaPine, Fremont, Fort Rock, Silver Lake, Summer Lake and Paisley, 179.5 miles, August 19-20; at Lakeview and on excursions to New Pine creek and Drews valley, two round trips, 76 miles, August 21-22; Lakeview to Klamath Falls, 99.6 miles, August 22; Harriman Lodge and Pelican bay, via

steamboat (autos brought around by road 31.6 miles), August 24; Crater lake and return, via Fort Klamath, 88.6 miles, August 25; to Bend, via Crescent and LaPine, 135.2 miles, August 26; to Portland, via LaPine, August 26; arrive Portland morning, August 27. Side trips if desired, extra proportionate cost; to Christmas lake valley, extra mileage, 29; to Bonanza, extra mileage, 25.

No 2 Takes Ten Days.
Total expense, \$117.25; total automobile mileage, 722.3; Portland to Redmond, by rail, August 17; Redmond to Prineville, by auto, 17.7 miles, evening of August 17; Prineville to Burns, via Paulina and Buck mountains, 148.5 miles, August 18; Burns to Bend, via Crescent and LaPine, 135.2 miles, August 26; to arrive Portland, morning August 27. Side trips if desired: To Adel, along Warner lake instead of direct from Plumb to Lakeview, extra mileage, 16; to Bonanza, extra mileage, 25.

\$129.50 For This Trip.
Total expense, \$137.20; total auto mileage, 995; Portland to The Dalles, by rail, evening August 17; The Dalles to Prineville, by auto, via Dufur, Tygh valley, Juniper Flat, Maupin, Shaniko, Antelope, Agency Plains, Madras, Metolius, Culver and La Monta valley, 163.6 miles, August 18; Prineville, to Lakeview, via Bend, La Pine, Fremont, Fort Rock, Silver Lake, Summer Lake and Paisley, 211 miles, August 19-20; at Lakeview and on excursions to New Pine Creek and Drews Valley, two round trips, 75 miles, August 21-22; Lakeview to Klamath Falls, 99.6 miles, August 22; Harriman Lodge and Pelican Bay via steamboat (autos brought around by road), 216 miles, August 24; Crater Lake and return, via Fort Klamath, 88.6 miles, August 25; to Bend, via Crescent and LaPine, 135.2 miles, August 26; to arrive Portland, morning August 27. Side trips if desired: Warner lake instead of direct from Plumb to Lakeview, extra mileage, 16; to Bonanza, extra mileage, 25.

Eleven Days on Way.
Total expense, \$152.70; total automobile mileage, 1122.7; leave Portland by rail for The Dalles evening, August 16; The Dalles to Prineville by auto, via Dufur, Tygh valley, Juniper Flat, Maupin, Shaniko, Antelope, Agency Plains, Madras, Metolius, Culver and La Monta valley, 163.6 miles, August 17; Prineville to Burns, via Paulina and Buck mountains, 148.5 miles, August 18; Burns to Bend, via Crescent and LaPine, 135.2 miles, August 26; to arrive Portland, morning August 27. Side trips if desired: Warner lake instead of direct from Plumb to Lakeview, extra mileage, 16; to Bonanza, extra mileage, 25.

JULY IS PASSING WITH NO BIG FIRE

Late Rains and Cloudy Days Have Greatly Helped Forest Forces.

(United Press Leased Wire.)
Salem, Or., July 30.—For the first time in years has the month of July passed without great fires raging in Oregon's forests, destroying thousands of dollars worth of timber. This year with only one day left in the month, not a single fire has been reported.

"Forest conditions are excellent this year," said Deputy State Forester Slecke. "However, the forests are getting very dry now and a fire might break at any time, but we are away ahead of last year at this time. The season has been favorable, as the late rains and cloudy weather kept the forests from drying out so early."

Last year at this time many fires were raging. This year the forest fire fighting force is better organized than ever before and the outlook is that the timber owners will go through the season with the slightest loss they have yet had.

BAND CONCERT TONIGHT AT WASHINGTON PARK

The Portland Park band, W. E. McElroy, director, will play this evening at Washington (City) Park. The concert begins at 8 p. m. Following will be the program:

March, "Hearts of Gold".....Albaret
Overture, "Light Cavalry".....Suppe
Waltz, "Santitas".....Corbin
Bartone Solo "Grand Fantasia"
Humoresque.....Eugene Clouff
INTERMISSION
Selection "Mariana".....Wallace
Sextet from "Lucia".....Donizetti
Messrs. Driscoll, Cochran, Tait, Clouff, Powell and Tait.
Characteristic Mazurka "Amorosa"
Medley Popular Airs.....Navarro
Lampe
Tomorrow night the band plays at the South Parkway, Jefferson and Park streets, and tomorrow afternoon at Sellwood Park for the Children's day celebration. Thursday night the band plays at Peninsula Park and Friday night at Holiday Park.

miles, August 26; Bend to The Dalles, via Laidlaw, Redmond, Terrebonne, Culver, Metolius, Madras, Antelope, Shaniko, Grass Valley, Moro, Wasco, Deschutes and Miller's bridge, 180.5 miles, August 27; by rail, The Dalles to Portland, morning August 28. Side trips: To Adel along Warner lake, instead of direct from Plumb to Lakeview, extra mileage, 16; to Bonanza, extra mileage, 25.

Soo Limited
A through fast train leaving Portland 9 p. m., for St. Paul, Minneapolis and the east by way of the Canyons. No heat, no dust across the Continent route. Ticket office Third and Pine (Multnomah hotel building).

VARIETY OF GOOD ACTS OFFERED AT ORPHEUM

There is variety of entertainment offered in this week's bill at the Orpheum. The acts are uniformly good, and make up for the absence of any real headliner.

Martin Johnson, who cruised for two years among the South Pacific islands

with Jack London in the Snark, offers a travelogue that is highly instructive and very interesting. Mr. Johnson's story is illustrated with stereopticon slides and moving pictures.

William Burr and Daphne Hops, "London society entertainers," do a pleasing little singing act in a refreshingly new and artistic setting.

Kelly and Lafferty are clever dancers, who put a touch of novelty into their turn with a "shadow dance." The Robert De Mont trio are welcomed back in the "Hotel Turn Over," and are as clever as ever in their team and individual acrobatics.

W. H. St. James and players offer the playlet on the program, "A Chip of the

Old Block." The sketch was evidently built merely to get one or two laughs, and it succeeds in doing that.

Charles Case, minstrel monologist, "talks about his father," and a lot of other people and things, and he sings one song. Case's number sparkles with good stuff.

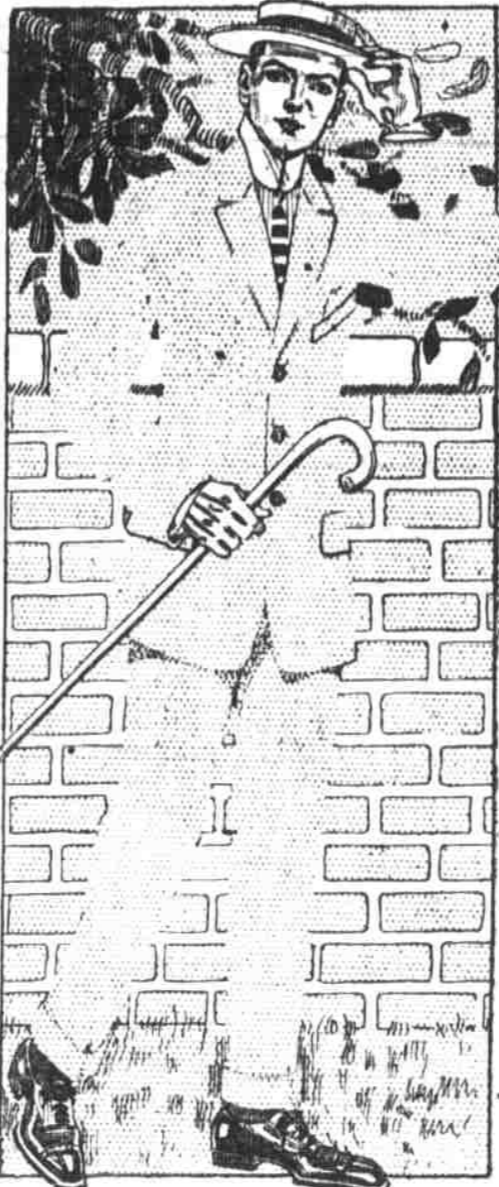
Libby, comedy cyclist, does a handi-bar whirl that is very good. Orpheum orchestra and the pictures round out well balanced and uniformly entertaining bill.

Novel Theatrical Plan.
(United Press Leased Wire.)
Pasadena, Cal., July 30.—South Pasadena as a city is going into the theat-

rical business. Early in the fall a series of Shakespearean performances are to be given in Garfield Park, the city and the chamber of commerce standing behind the plan financially. There will be a chorus of 300 voices to add to the effect. Negotiations are in progress for the engagement of Madame Schumann-Heink as soloist. The production will be under the direction of Ernest Shipman, a well-known theatrical man of Los Angeles.

An English engineer has invented an attachment for automobiles and other vehicles which collects the dust they raise in passing along a road.

Semi-Annual Clearance of Schloss Baltimore Clothes



THREE things make this remarkable Clearance Sale very unusual—the character of the goods offered, the fact that this store with its service and its guaranty of good faith offers them and the very low prices. Any one of the three is a good deal—together they ought to prove irresistible.

- \$15.00 Suits at \$11.75
- \$18.00 Suits at \$13.65
- \$20.00 Suits at \$14.85
- \$22.50 Suits at \$16.65
- \$25.00 Suits at \$18.65
- \$30.00 Suits at \$22.35
- \$35.00 Suits at \$25.45
- \$40.00 Suits at \$29.25

Salem Woolen Mills
Fourth and Alder Streets | Clothing Co. | Grant Phegley, Manager

Our New Store Is Rapidly Nearing Completion, Which Forces the Reduction of Stocks to the Lowest Possible Point—Greater Bargains Now Than Ever Before

Wom'n's Summer Hosiery

Temporarily Priced

35c Silk Boot Stockings... 25c

—Thread silk boot stockings in black with cotton tops, heels and toes in a durable gauze weight.

* 50c Thread Silk Stockings, Removal... 33c

—Full fashioned thread silk stockings, made with deep double silk lisle garter tops and extra heavy spliced, high heels, soles and toes.

50c to 55c Stockings... 45c

—Stockings of thread silk in black, tan or white. Fine, light and durable.

\$1.00 Thread Silk Stockings now... 75c

—Ingrain thread silk stockings in black with the durable silk lisle tops and soles. Full fashioned, fine and sheer.

\$2.25 Thread Silk Stockings now... \$1.75

—Pure white thread silk stockings with self or black silk side clocks. The same style in gold tan with pretty side clocks.

Wash Goods
40c, 35c and 25c Materials
Removal 9c

—Muslin de Soie in solid colors, silk and cotton mixed in a large assortment of colors.

—Printed foulards in neat, choice designs.

—Plain and fancy stripe voile in solid colors, many shades.

Bordered Batiste
Regular 40c and 35c
Now 15c

—These beautiful stylish summer dress materials come 40 inches wide in white and tinted grounds, figured and floral patterns with trimming border to match.



This Is the Great Cleanup Sale of the Season
In Women's and Misses' Wearing Apparel

Removal \$5.00

CONSISTING OF—

- Serge and Silk Dresses selling from \$12.50 to \$18.50
- Linen Suits selling from \$10.00 to \$17.50
- Voile and Panama Skirts selling from \$8.50 to \$16.50
- Linen Coats selling from \$9.00 to \$12.50
- Lingerie Dresses selling from \$8.50 to \$15.00
- Linen Dresses selling from \$12.00 to \$20.00

A New, Genuine
Victor-Victrola
50c Down—50c Week

Lipman, Wolfe & Co.
Merchandise of Merit Only

Riding Skirts of Khaki
Reg. \$4, Removal \$3.12

—Plain gored divided skirts for women, made with a panel in the front and two rows of buttons, and a side pocket.

\$3.50 Khaki Norfolks
Removal \$2.65

—Made with two box pleats in the front and two pleats in back. Has side pockets and belt at the waist. Well made and extra well fitting.

\$6 Princess Slips \$3.50

—These slips are made in the Princess style of an extra grade of soft messaline silk in light blue, pink, yellow and lavender. They are made with silk, Jersey tops and a deep knife pleated flounce

Blazer Coats, Now \$2.95

—These Blazer jackets are just the thing for all outdoor wear. They come in all the college stripes, such as gold and Yale blue, orange and black, yellow and green. Made of a fine French flannel in the regular Blazer style.

\$2 Tailored Shirts \$1

—Women's colored percale shirts with pin stripes and all white linon. Made with Dutch neck and trimmed with pretty colored chambray. This colored chambray is used on the cuffs and for the turndown collar.



Reducing Reduced Prices on Kimonos

\$1.50 to \$2.00 Long Kimonos, Removal 98c

—Long kimonos of prettily figured lawns, swiss and dimity. Made in Empire and belted at the waist styles, and a few made loose and flowing. They have round, V and square necks, some with turndown collars, set-in or kimono sleeves. These kimonos are trimmed with bias bands of contrasting materials.

\$2.25 to \$2.50 Long Kimonos, Removal \$1.79

—Long kimonos of lawn, swiss and dimity in blue, pink and lavender combined with white. Made in many attractive styles. Trimmed with bandings, insertions and some have fancy collars. Made in the Empire style, or belted at the waist.

\$2.75 to \$4.00 Long Kimonos, Removal \$2.19

—This is an exceptional lot of dainty cool kimonos. Made of swiss, lawn and dimity in flowered designs in light colorings, such as plain white, light blue and white, pink and white and lavender and white. Trimmed with lace, embroidery, beading and ribbons. Made in the Empire style with V shape necks, some with square and others with round necks and large sailor collars of all over embroidery. All have sewed in elbow sleeves.

\$1.50 Short Kimonos, Removal 79c

—These kimonos are also made of swiss, lawn or dimity in light, cool colorings. They have round or V shape necks, finished with collars or buttonhole edges. Many trimmed with bias bandings. Set in elbow sleeves. Some have peplums and others with shirred waist line, and a few in belted style.