

THRONGS THAT FREQUENT PORTLAND'S STREETS INDICATE PROGRESS

B. P. O. Elks' Reunion City Business Center and Distributing Point of Vast Inland Empire



ROSE FESTIVAL CROWD



PORTLAND FROM THE HEIGHTS

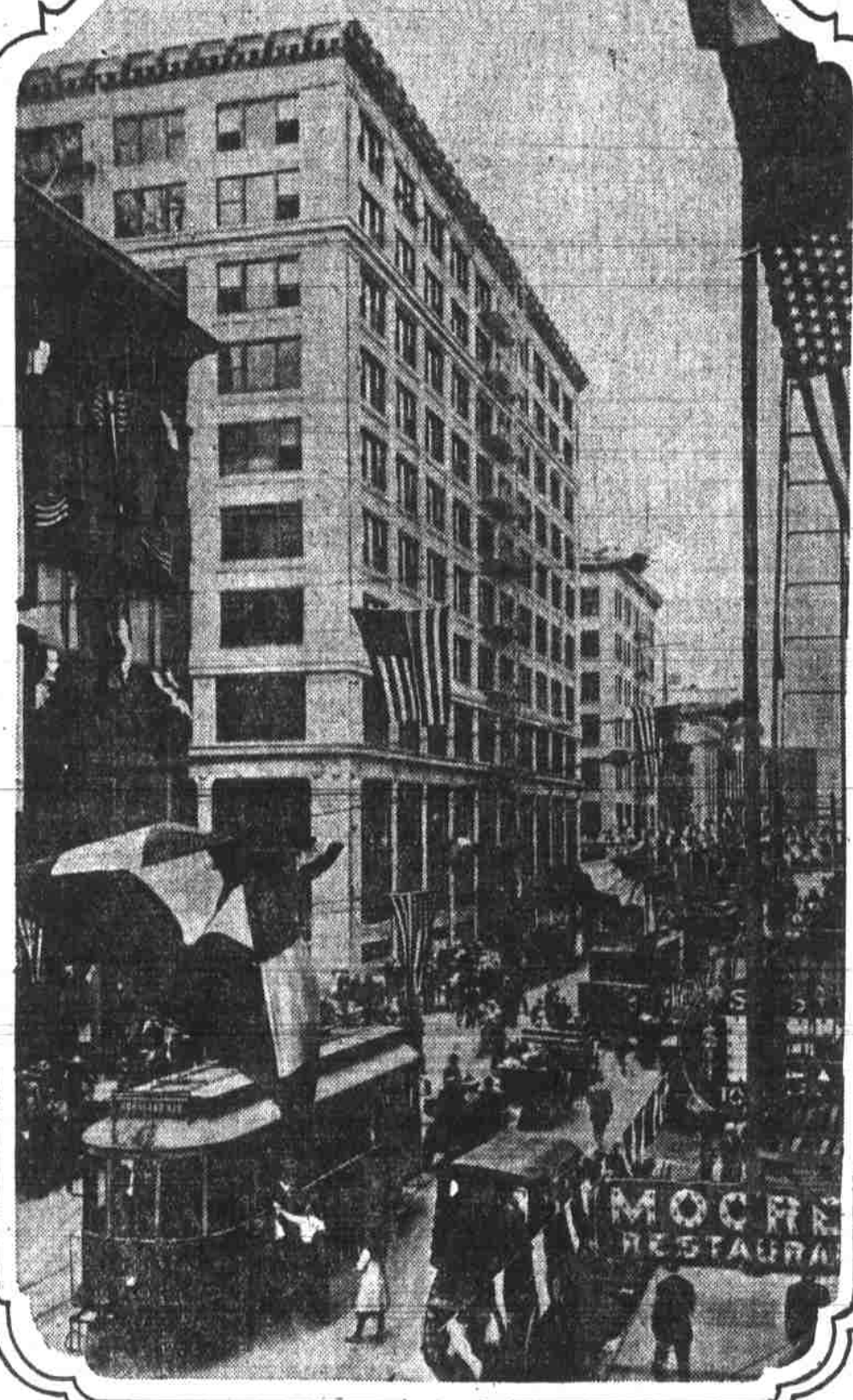
© 1912 BY
WEISTER PORTLAND



ON BUSY
SIXTH STREET



WEST
ON
WASHINGTON
STREET

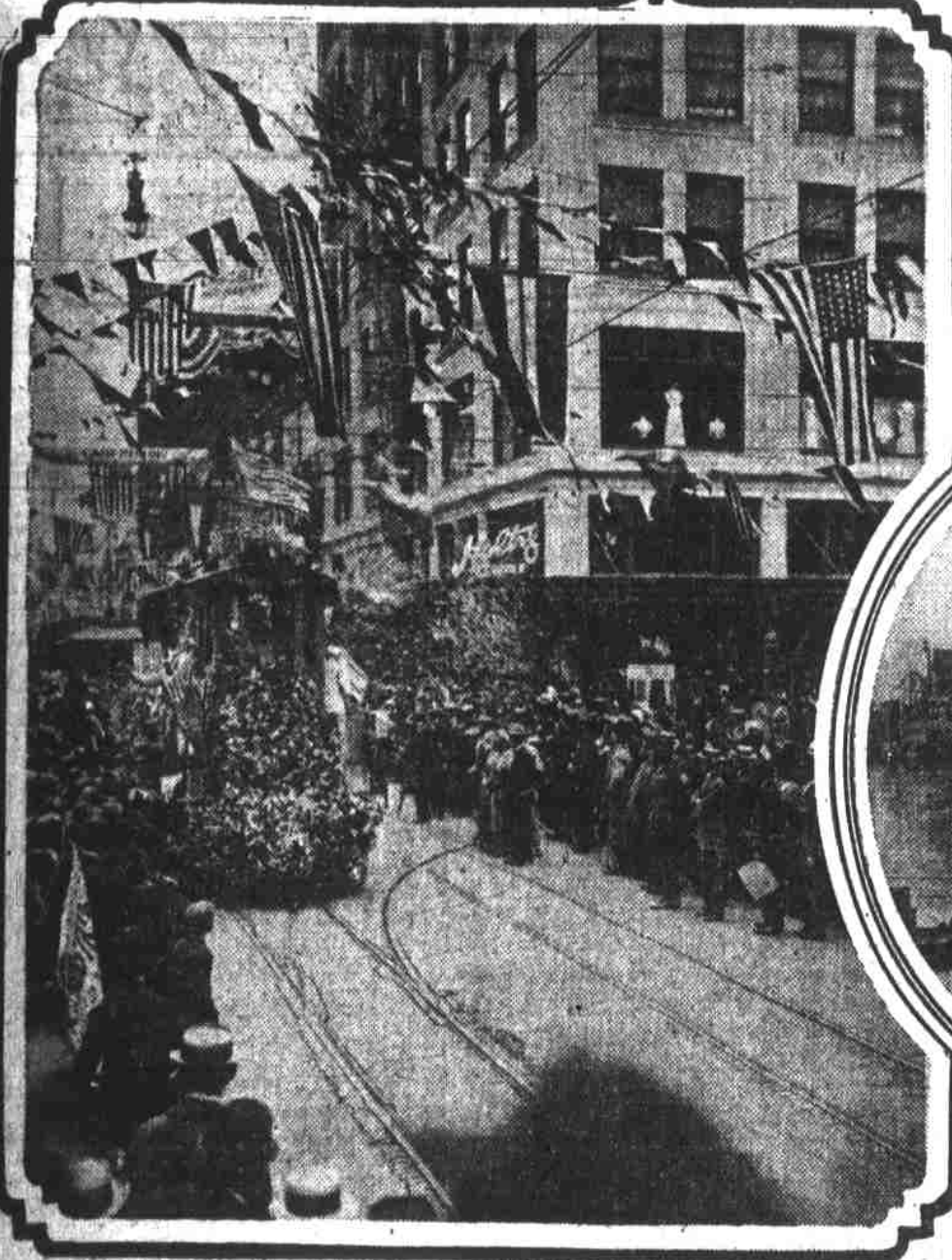


IN SHOPPING
DISTRICT

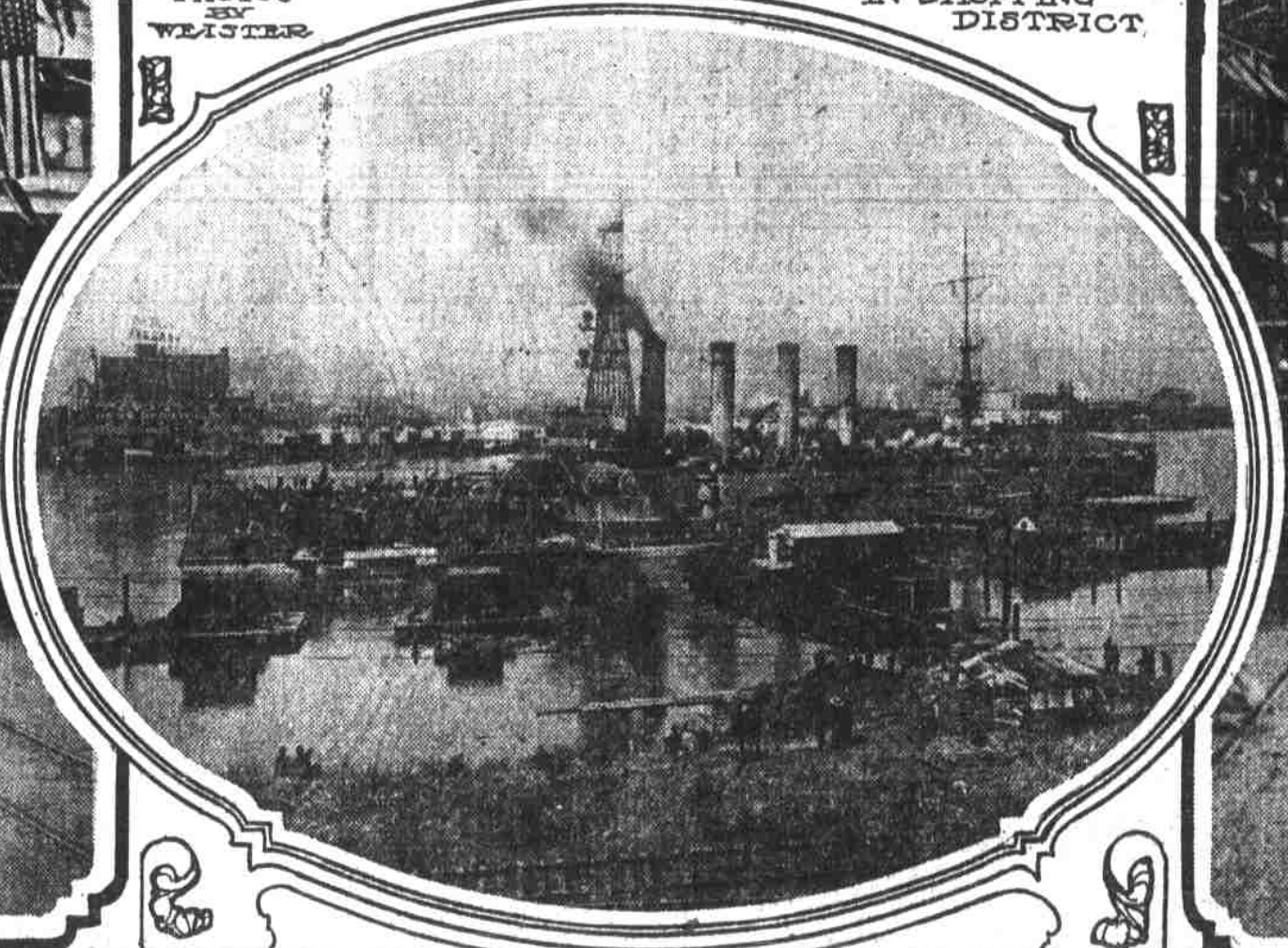
PHOTOS
BY
WEISTER



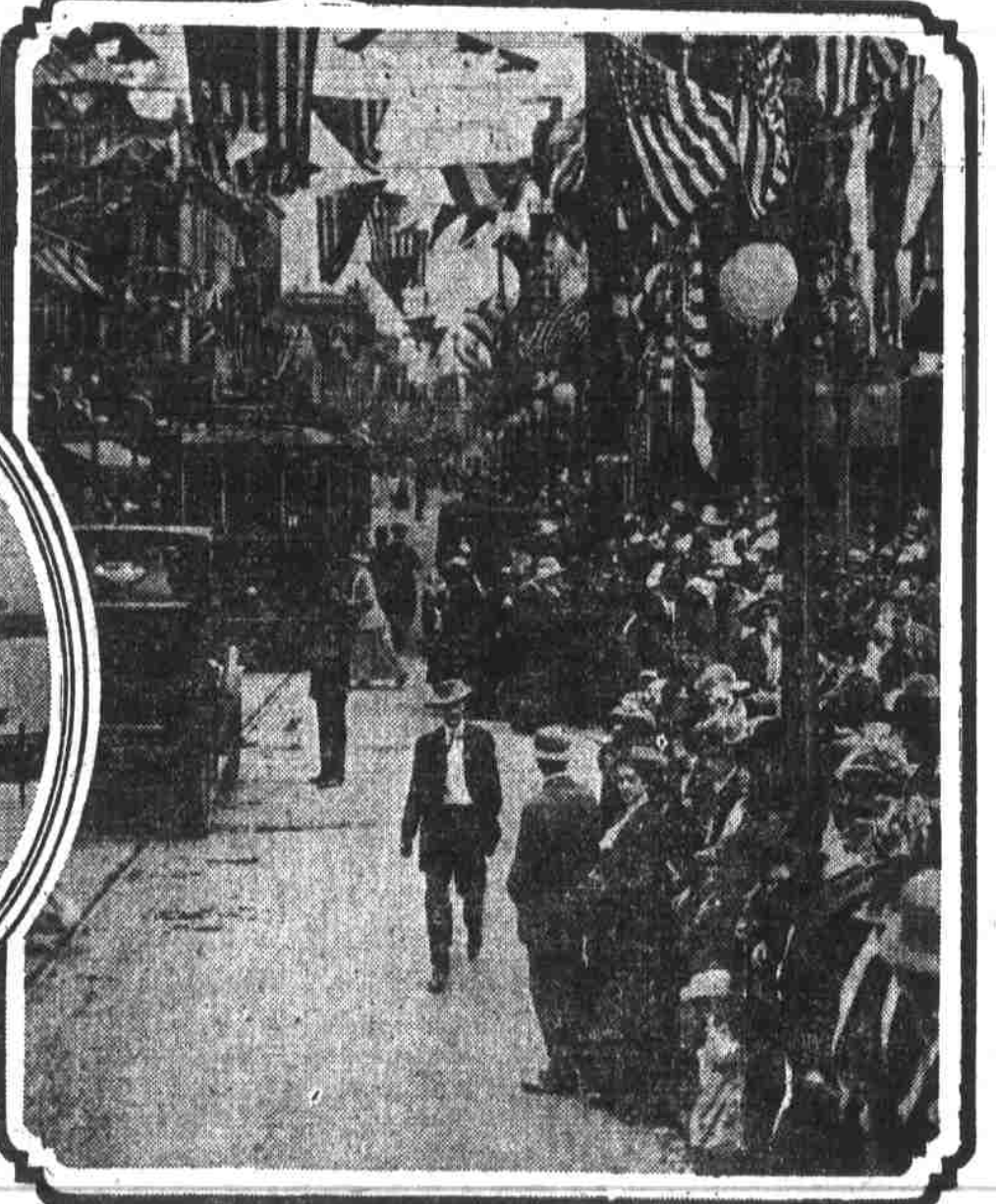
IN
HOTEL
DISTRICT



SHOWER OF ROSES DURING FESTIVAL WEEK



U. S. CRUISER MARYLAND IN PORTLAND HARBOR



FIFTH AND MORRISON STS