

OLD-FASHIONED GARDENS AGAIN BECOMING RULE

Improved Types of Plants Raised by Our Grandmothers Popular Once More; Early Varieties Named.

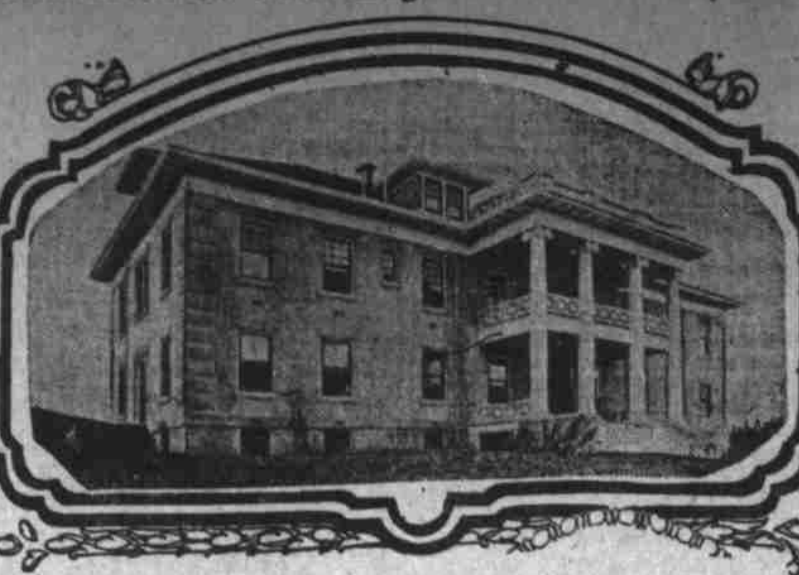
By Ralph R. Routledge. The old-fashioned gardens of our grandmothers contained a wealth of gorgeous bloom throughout the entire summer, from early spring until autumn. These gardens are again very popular, and since the advent of the new and highly improved strains of perennial plants, such as Aquilarias, Campanulas, Delphinium, Helianthus, Phlox, etc., it is possible to convert these gardens into veritable bowers of beauty.

Resemblance to Nature. According to the modern idea of landscape gardening, the ideal garden is not one whose beds are laid out in geometric lines, but rather one where there is a closer resemblance to nature, and this can best be effected by the use of the perennials and herbaceous plants, which give the greatest range of color and at the same time a continuity of bloom throughout the season.

Raising Perennials. Perennials can be raised from seed, but very few of them bloom the first season, therefore those who wish to get immediate results, should get field grown, one-year-old plants. Flowering bulbs and roots, such as peonies, tulips, iris, crocus, snow-drops, anemones, lilies, narcissus, dahlias, gladioli, etc., are very desirable in perennial borders.

Anyone desiring detailed information on any of the above plants, or shrubs, can easily obtain it from inexpensive textbooks, or by reading the up-to-date seed, plant and tree catalogues issued by reliable dealers in this line.

Annex to Go Onto Eugene General Hospital



Eugene, Or., March 27.—A large annex will be added to the Eugene general hospital building this summer by the Sisters of Mercy, who purchased the institution a few days ago and who will take charge May 1.

more interested in the beautifying of their city and country places. Portland is so favorably situated and enjoys such ideal weather conditions that it can have the most gorgeous and beautiful floral display and lovely green lawns, during the entire year.

SAYS MAN LIKE HENDERSON NEEDED Principal of Ockley Green School Is Endorsed by Rieseland for Superintendent.

Commending Guy W. Henderson, principal of the Ockley Green school, as a man peculiarly fitted by his training and talents to supervise the work of the Multnomah county schools, Ben Rieseland, who has taken a large interest in school affairs, yesterday told why he favors the election of Henderson as county school superintendent.

Because of a pot of paint, knocked by a careless painter, from a scaffold in front of a building under renovation at Washington and Twelfth streets, a certain cleaning and dyeing establishment worked a night shift last night. Without warning and with a thud like unto the fall of soggy bread the aforesaid pot of paint tumbled to the sidewalk, barely missing passing pedestrians on the busy thoroughfare, but as it was bespattering them with the pungent wood preserver.

Wood prices cut 50c to \$1.00 by the Edliefsen Fuel Co.

COMPLETED LIST OF CANDIDATES SEES 174 VOTERS

122 Are Republicans and 56 Democrats, Seven Others Having Failed to Complete Petitions, 1 Withdrawing.

Salem, Or., March 30.—With 174 completed petitions in, the clerical force in the office of the secretary of state at 5 o'clock this afternoon completed the task of checking up and arranging the list of candidates to be certified to the various county clerks in the state. In all 134 Republicans filed original petitions and five of the number failed to file completed petitions.

Yesterday was the last day in which final petitions could be received at the office of the secretary of state and the office was flooded with eleventh hour petitions. This year has produced the greatest number of candidates that have ever made up a primary election ballot.

SAYS CITY SHOULD HAVE OWN ABATTOIR

While Portland city council considers the adoption of a meat inspection ordinance that will bar from sale diseased, decayed and dirty meat, A. D. Melvin, chief of the government bureau of animal industry, has forwarded to E. C. Joss, Portland inspector in charge, some pertinent suggestions.

Mr. Melvin's statement contains the information that a little over half of the nation's meat supply now passes under federal inspection. Concerning the proper extent and effectiveness of inspection he adds:

"The principal object of meat inspection is to protect the consumer from diseased or otherwise unwholesome meat. This involves not only the inspection of the meat for the detection of disease or other unwholesome conditions, but the requirement of sanitary conditions in the abattoirs and packing houses and the enforcement of sanitary methods in the preparation, curing and handling of the meat.

Count Boni Seeking ANNE MORGAN'S HAND

ALBANY COLLEGE BEAT WILLAMETTE DEBATERS

EMPLOYE FORGES NAME OF ELMIRA LUMBERMEN

by his employer Friday to pay the expressage on a bull shipped to Walters from down the state. Bolton avoided the express office, but stayed at the hotel Sunday night and this morn-

ing gave the clerk a check for \$21.70, purported to have been signed by Walters, in payment for his lodging. He received the change and left the town. When the check was presented at the

bank soon afterwards, it was discovered that the signature was a forgery. Bolton also went away with about \$5 which his employer had given him to pay the expressage on the bull.

Turn Now to Our Big Double-Page Advertisement, in Section Two, Brimming With News of

Stirring Easter Sales in Every Section of Store

One Thousand Large, Beautiful Calla Lilies to Be Given Away to First Shoppers Tomorrow!



Beautify Your Home and Make a Garden

The heaviest, healthiest and most contented are those who garden. It gives you life and vigor and makes pure blood, healthy bodies and good citizens.

Specials for This Week

HIGHEST QUALITY

ROUTLEDGE SEED & FLORAL CO.

JAPAN LILY BULBS—Plant outside at once, singly or in groups of six or more. All varieties catalogued at 25c to 75c each. Special this week 15c each, \$1.50 dozen.

ROSE BUSHES—Planting season will soon be over and to move balance of our stock quickly, we will give 4 choice bushes free with every dozen ordered, or 4 35c new Dahlia Bulbs.

PLANT DAHLIAS AND GLADIOLI NOW—We have the latest American and European introductions as well as all the good old types. Descriptive catalogues and our oil paintings from nature will help you in your selection.

REMEMBER PRIZE GARDENS ARE MADE BY PLANTING ROUTLEDGE'S "HIGHEST QUALITY" SEEDS AND PLANTS.



EVERYTHING FOR THE LAWN AND GARDEN.

EASTER LILIES, large fine flowers.
EASTER CHICKS
EASTER RABBITS

See them in our window this week. Phone your orders early—we deliver.

Just received full carload Cyphers Incubators and Brooders. These are recognized as the World's Standard Hatching and Brooding machines. 225 page catalogue free.

Insure the life of your chicks by feeding Routledge's "Highest Quality" Chick Feed. Poultry foods and supplies of all kinds—Catalogue on request.

ROUTLEDGE SEED & FLORAL CO.

169 Second St. NEAR MORRISON CITY TREE AND PLANT YARD, CORNER FOURTH AND MADISON—NEAR CITY HALL

Three Experts DENTISTS

Our interchangeable Facings A "Wise" Idea

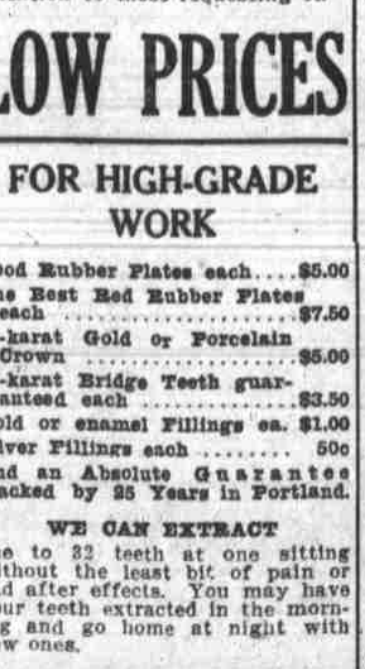
Our bridge work has been brought to the highest state of perfection. The teeth on this bridge are interchangeable and will without removal fit from the mouth.



Dr. W. A. Wise will give his personal attention to those requesting it.

MEN OF PROVEN SKILL

Plates—With Flexible Suction. The very best and latest in Modern Dentistry. No more falling plates.



Dr. D. S. Bomgardner, Native of Nebraska. Came to Oregon in 1907. Graduate N. P. Dental College, 1907. Registered same year.

LOW PRICES FOR HIGH-GRADE WORK

Good Rubber Plates each \$5.00
The Best Red Rubber Plates each \$7.50
22-karat Gold or Porcelain Crown \$5.00
22-karat Bridge Teeth guaranteed each \$2.50
Gold or enamel fillings ea. \$1.00
Silver fillings each .50c
And an Absolute Guarantee Backed by 25 Years in Portland.

WE CAN EXTRACT one to 25 teeth at one sitting without the least bit of pain or bad after effects. You may have your teeth extracted in the morning and go home at night with new ones.

OUT-OF-TOWN PATRONS should remember that our force is so organized that WE CAN DO THEIR ENTIRE CROWN, BRIDGE AND PLATE WORK IN A DAY if necessary.

The Wise Dental Co.

25 YEARS' ACTIVE PRACTICE IN PORTLAND

Hours: Daily, 8 a. m. to 6 p. m.; Sundays, 9 a. m. to 1 p. m. Examination Free. Phones A-2029, Main 2029.