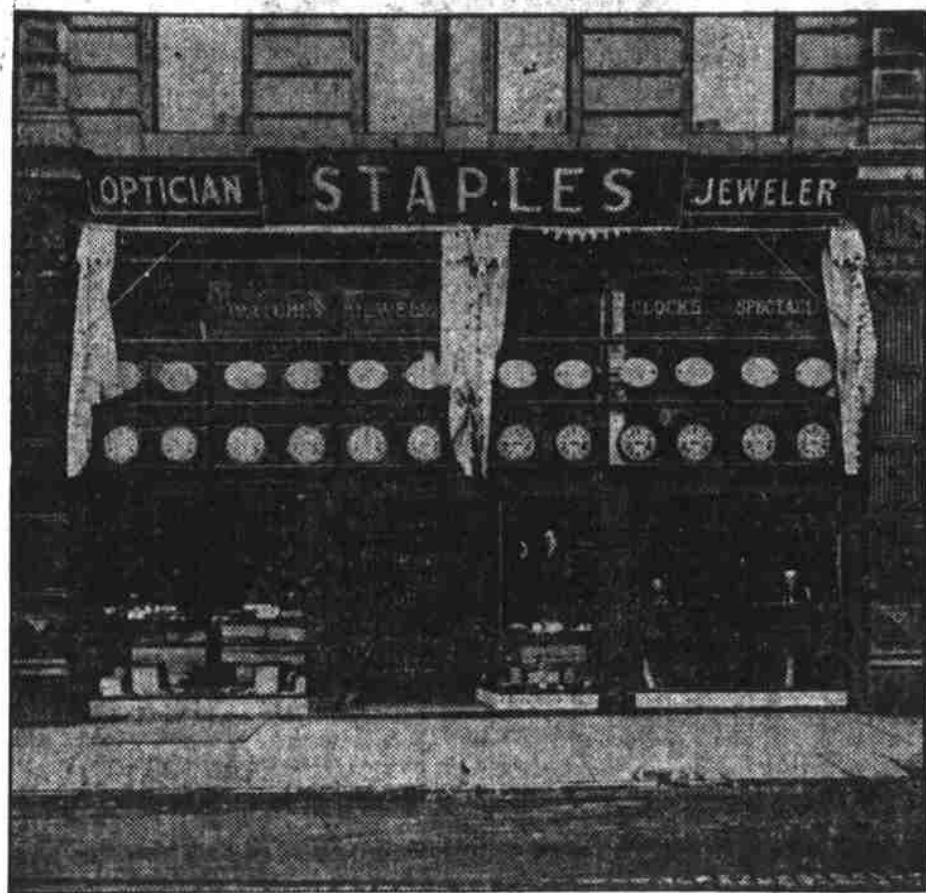


# GRAND OPENING ALL THIS WEEK



**STAPLES, THE JEWELER**  
162 FIRST STREET, NEAR MORRISON

**THE BIG  
LITTLE JEWELRY  
STORE**



**Has Enlarged Its Quarters--Come and See Us**

I Personally Superintend All Parts of This Business.  
You Can Economize by Trading at This Store.



**LOUIS SIMPSON.**  
Our watch repairing department of nine watchmakers is under one of the oldest and best watchmakers in the United States, who has charge of the watch repairing. He learned his trade in Denmark, and has been in the United States 42 years, of which 22 years he has been in Portland; has repaired more fine watches than any other watchmaker in the Northwest.

We are at the same location—same old place—same old way of doing business. My help will give you the best that is in them—their jobs depend upon their treatment of the public.

**A Little Souvenir of the Occasion Will Be Given Every Man, Woman and Child Coming to the Store**

Now I am inviting YOU, come. I have made the opening for a whole week and we will be OPEN EVENINGS, this gives all of our customers an opportunity to visit us on this, our THANKSGIVING

**During our opening week we'll give a discount of 10 percent on any and all goods purchased or bargained for—deposit paid—contract goods excepted**



**CARL J. GREVE**  
Manager of Sales Dep't.  
Watch and Diamond Expert.

**We Will Lay Away Goods for You Now for Christmas. Come in, Make Your Choice and Pay a Small Deposit**

One of the largest stocks of Watches, Diamonds, Rings, Chains, Silverware, Clocks and Cut Glass in the city to select from. The largest and most complete workshops in the Northwest. We repair and make anything in the Jewelry line



OPTICAL ROOM

**We Fit and Grind More Spectacles and Eye Glasses Than Anyone Else in the City—Why?**

Because we have and make the best of glasses in our own shop and factory at the following prices:

- |  |        |   |        |
|--|--------|---|--------|
| Sphero Lenses in your rim frames . . . . .     | \$1.00 | Sphero Lenses in aluminum frames . . . . .    | \$1.50 |
| Sphero Lenses in your rimless frames . . . . . | \$1.50 | Sphero Lenses in gold filled frames . . . . . | \$3.50 |



C. L. BENDER, Optometrist

**STAPLES, THE JEWELER**  
162 FIRST STREET, NEAR MORRISON