

KUMERIC IS FIRST WATERHOUSE BOAT TO BRING CARGO IN

Has General Freight From Japan for Mitsui & Co. and Timbers From Manila for Mahogany Company.

Carrying inward cargo for the first time since steamers of the Waterhouse company have been running in here regularly, the Bank Line steamer Kumeric, 4096 tons net, Captain McGill, is scheduled to arrive in Portland about Wednesday, coming from Manila and Chinese and Japanese ports by way of Puget sound.

Statter & Co., agents of the line here, have been notified that the Kumeric has a quantity of general freight from Japan for Mitsui & Co., and it is said that she also has timbers from Manila for the Philippine Mahogany Lumber company, which will be discharged here. With those exceptions all of her cargo is being discharged at Puget sound ports.

The Kumeric was scheduled to reach here March 25, but owing to the rapidity with which her cargo has been discharged, she will come here a few days earlier.

Cargo which will be placed aboard the big liner here will amount to approximately 5000 tons, of which a small part will be lumber and the remainder wheat and flour for China and Japan. It is probable that the Kumeric will come directly to the O. V. R. & A. Albatra dock.

Another oriental liner which is now loading here and which will be leaving about the time the Kumeric arrives is the Norwegian steamer Rygja of the Portland & Asiatic line. She is now loading wheat and flour for China and Japan and will sail with a small amount of lumber that she has taken aboard. She is scheduled to sail from here for Yokohama and ports beyond that on next Saturday.

AMPLE WATER SUPPLY.

United States Issues Bulletin on Snowfall in Mountains.

Treat there will be a plentiful water supply this season is forecasted in the snowfall bulletin of the United States department of agriculture, the report being for February, 1911. Following is a synopsis of the report:

"The February snowfall in the Sierran mountains was forecasted as normal, but at the close of the month there was no snow below the 2000 foot level, while at higher altitudes the amount remaining on the ground was considerably more than at the end of February, 1910. On both slopes of the Cascades, and in the Blue mountains, less than the usual amount of snow fell, but the account of the comparatively mild weather, the snow, instead of melting, settled and packed quite solidly, so that the amount on the ground at the close of the month in these sections was about the same as last year. Much of the accumulated snow blanket fell early in the winter, and is therefore quite compact and in a favorable condition for gradual melting, insuring a late flow of water. Indications are for a plentiful water supply for the coming season, that will equal or exceed the normal."

TWIN CITIES SAILS TUESDAY. Good Tonnage for Lewiston is On Hand; Riggs in Charge.

The management of the Open River Transportation company has announced that the steamer Twin Cities, which is scheduled to leave Celilo for Lewiston Tuesday, will get away on the date fixed, and that she will be in command of Captain Arthur Riggs, who was master of her last season. Captain Riggs knows the upper Columbia and the Snake river like a book and is considered one of the best masters on that stretch of the river. The management stated that they have a good command for Lewiston and that they will continue to operate the steamer as long as it holds out in that manner, the stage of water in the river permitting.

BOULDERS DESTROY DOCK. Part of Quarry Below Rainier Tumbles Down to River.

F. D. Butler, local representative of the Loop Lumber company, says that while on his way up the river yesterday he noticed a large part of a quarry located three miles below Rainier on the Washington side of the river had slipped down and destroyed the dock below. Mr. Butler said he was of the opinion that an extra large shot had been fired and had loosened the rock above, causing it to slide and take out the dock, which floated away.

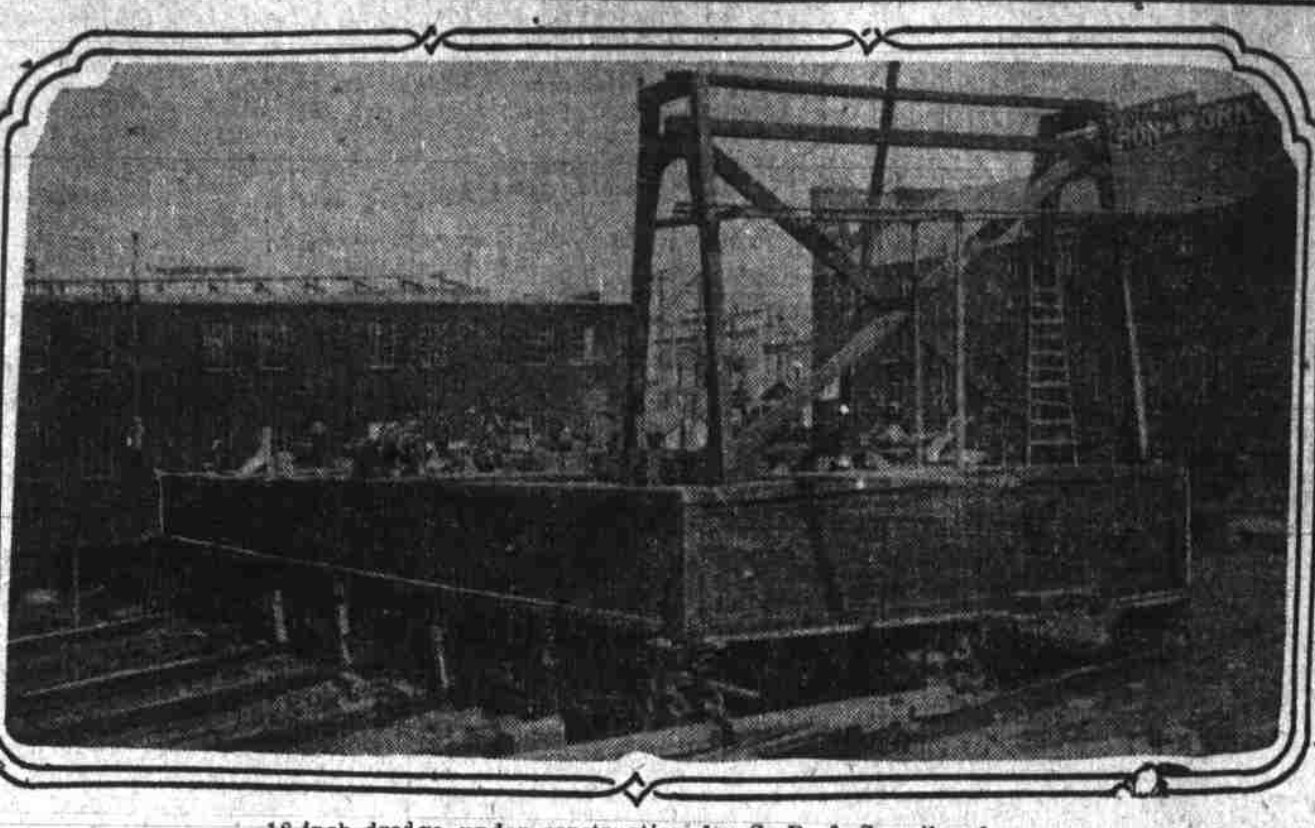
MARINE NOTES.

Astoria, March 18.—Arrived at 5 a. m. and sailed at 1:30 p. m., steamer Jim Butler, from Everett, for San Francisco; put in for fuel. Left up at 9 a. m., steamer Vosburg. Sailed at 1 p. m., steamer Nome City, for San Francisco; at 1:05 p. m., steamer Shasta, for San Francisco. March 18.—Arrived at 6 a. m., steamer Geo. W. Elder, from Portland. Sailed at 7 a. m., steamer J. A. Chancelor for Portland. Arrived at 8 a. m., steamer Beaver from Portland. Sailed last night, steamer Casco for Portland; steamer General Hubbard for Columbia river. Tides at Astoria Sunday: High water—3:22 a. m., 8:3 feet; 4:05 p. m., 8.5 feet. Low water—10:02 a. m., 0.9 feet; 9:47 p. m., 2.3 feet.

ALONG THE WATERFRONT

Having taken aboard a quantity of sand and cement to be used for many factoring buoy sinkers, the lighthouse tender Manzanita will get away for the buoy depot at Tongue Point during the early part of this week. Discharging of ballast from the French bark Bougainville was expected to be completed last night and she will come up to one of the grain docks in the local harbor to begin loading wheat in a day or two. To begin taking on a cargo of lumber for San Francisco, the barge Gerard C. Tobey was shifted from the Supple dock to Goble yesterday afternoon. Laden with 25,000 barrels of crude oil, the steamer Roma, Captain Lawson, of the Union Oil company, sailed from Portland yesterday for San Luis. She cleared for that port again yesterday. Work on the new Broadway bridge has been the means of destroying the Victoria dolphins on the east side of the river. At these dolphins the water-

DREDGE IS PRACTICALLY READY TO LEAVE THE WAYS



18-inch dredge under construction for S. P. & S. railroad.

The new 18-inch dredge being built at the Shipley shipyards for the North Bank railroad is 120 feet long, 36 feet beam and has a depth of hold of eight feet. She will be used by the railroad company principally for obtaining material from the bottom of the Columbia river with which to fill gaps in the road along the north bank of the river now covered by trestles. As shown in the cut, the dredge is nearly ready to take the water, which she will do the first of this week, after which she will be towed to the plant of the Willamette Iron & Steel Works to have two boilers, weighing 45 tons, installed. When this has been done she will be towed back to the Supple yard and the remaining machinery, which is not now aboard, will be placed in position and the houses will be added. At the present time the only parts of the superstructure that have been erected are the "A" frame, which supports the suction pipe, and the spud frames. The main engine and practically all of the pumps have been installed in the dredge,

LUMBERMEN PLAN TO SEEK BUSINESS

Completion of Canal Spurs Manufacturers to Raise \$50,000 for Advertising.

Eugene, Or., March 18.—The monthly meeting of the Oregon and Washington Lumber Manufacturers' association was held in Eugene today. Over 100 visitors from outside points were here. One of the matters of public interest discussed was that of launching a movement for market extension. A large fund will be raised to advertise the lumber business in the northwest, in preparation for the business that will follow with the completion of the Panama canal. The sum of \$50,000 will be raised for the first year as a starter and a general advertising campaign will be inaugurated. L. S. Hill of the Brown Lumber company at Cottage Grove was recommended by the association as a member of the state forestry board, out of seven members to be appointed by Governor West. This organization has the privilege of naming one and the other six will be named by different associations. The visitors were royally entertained by Eugene during the day and it was with difficulty they could be assembled to transact business. They were driven all over the city and to Springfield in automobiles, lunched at the Hotel Osburn at noon by the Booth-Kelly company and will be given a dinner in the evening by the Commercial club. The club parlors were at the disposal of the members and many accepted the hospitality of that organization. Tonight the Hoos Hoos held a big concatenation with initiation of a big class of "Hoos" and the party will leave for the north on the 2:30 train in the morning.

MARINE INTELLIGENCE.

Due to Arrive. Alliance, Eureka, Mar. 25. Rose City, San Pedro, Mar. 19. Sue H. Elmore, Tillamook, Mar. 19. Breakwater, Coos Bay, Mar. 19. Beaver, San Pedro, Mar. 24. Bear, San Pedro, Mar. 29. Due to Depart. Golden Gate, Tillamook, Mar. 22. Bear, San Pedro, Mar. 18. Bear, San Pedro, Mar. 19. Sue H. Elmore, Tillamook, Mar. 21. Breakwater, Coos Bay, Mar. 21. Rose City, San Pedro, Mar. 22. Beaver, San Pedro, Mar. 28. Vessels in Port. Suveric, Br. sh., Astoria. Kilo, Ger. sh., Astoria. Nalid, Br. sh., Irving. Rygja, Nor. sh., Albina. Owenee, Br. bk., Linnton. Bougainville, Fr. bk., Linnton. Vincent, Br. bk., Moreay. Rose City, Am. sh., Stream. Wilhelmine, Gr. sh., Albina. St. Nicholas, Am. sch., Astoria. Levi G. Burgess, Am. bk., Can. Dock. Invermay, Br. bk., Stream. Manning, U. S. S., Will. Iron & Steel. Berlin, Am. sch., Linnton. Jones Howes, Am. sch., Astoria. St. Francis, Am. sh., Astoria. En Route With Cement and General. Admiral Cornulier, Fr. bk., Antwerp. Claus, Ger. sh., Hamburg. Marechal de Castries, Fr. bk., Tynes. Luzon, Am. sch., Redondo.

Bankers Give Concert.

The Portland branch of the American Institute of Bankers gave a concert and dance at Morlock's hall Thursday evening. It was the largest affair ever attempted by the Portland division. Two vaudeville acts led the program, Shapiro and Otto Bauman, musicians; Walter Knack, Hebrew impersonator; J. W. Byron, vocal soloist, and others. The hall was decorated with red carnations and Oregon grape. Refreshments were served.

Gold Watch Given Ferrera.

Attorney A. B. Ferrera has been presented with a valuable gold watch by the Columbus Day Benevolent society, an organization recently incorporated among the Italians of the city. The watch was presented to him in recognition of the part he performed at the recent session of the legislature in obtaining passage of the bill making Columbus day a legal holiday.

BILL PRECEDENCE DECIDED IN CAUCUS

Chairman Underwood Favors Passage of Tariff Measures First.

(United Press Leased Wire.) Washington, March 18.—"All questions relating to the organization of any legislation in the new house will be decided in Democratic caucus," said Chairman Underwood (Democrat, Alabama) of the new committee on ways and means, tonight. "Whether tariff bills or the bill to carry into effect the reciprocity with Canada will be given precedence is one of the first and most important legislative problems to be solved. Chairman Underwood's personal inclination is to pass tariff bills in the house and get them to the senate as early as possible. This, however, will depend upon caucus sentiment. The tariff bills will be written by the ways and means committee and submitted to the caucus before being formally adopted. Unless the caucus demands a full list of the house committee only those required for the special session will be appointed. It is believed the caucuses to be held April 1 and 2 will be devoted to questions of organization. The program of legislation will be considered at a caucus shortly after the opening of the session of April 4.

RENEGADE PIUTE SLAYER OF FOUR

Fiendish Indian Kills Fourth Man in Plain View of Helpless Witnesses.

(United Press Leased Wire.) San Bernardino, Cal., March 18.—Eising suddenly out of the cactus wastes, miles away from a posse that for four months has been seeking him, Queho, a renegade Piute Indian, has claimed another victim. While G. J. E. Mortimer of San Francisco, his wife and James Browne looked on from the opposite side of the Colorado river, powerless to interfere, Queho yesterday beat Clyde Markham, an aged prospector, to death, according to a report brought into Searchlight today by Ed Bower, foreman of the Rock Springs Land & Cattle company. The witnesses had no arms except a shotgun and were far out of range of that weapon. Markham is Queho's fourth victim. Poses from three states have hunted him since he killed Deputy Sheriff Worth last November. His murders were committed miles apart. In every case the murder was wanton and availed the slayer absolutely nothing, unless he killed for revenge.

HARRISBURG, OR., TO GET ANOTHER BANK

(Special Dispatch to The Journal.) Albany, Or., March 18.—Articles of incorporation for the Farmers and Merchants bank to be established at Harrisburg were filed with the county clerk this afternoon. The capitalization is \$30,000 and John Somerville, W. H. Dale and George McCart are named in the articles. It will be the second bank established there.

Milton Team Organized.

(Special Dispatch to The Journal.) Milton, Or., March 18.—The Milton-Freewater baseball grounds are rapidly nearing completion. A high board fence has been built around the grounds, the grandstand has to be covered and an addition is to be added. The park is much larger than the regulation size. Practice will be commenced by the men under the leadership of Captain Henderson on Saturday afternoon. The services of James Halgarth of Elgin, an A1 pitcher, have been secured by the manager. The first game will be played with Weston on March 28.

Rebeks in Convention.

(Special Dispatch to The Journal.) Albany, Or., March 18.—Fifty delegates, representing seven lodges of the Daughters of Rebekah, concluded a district convention here tonight with a social session. Mrs. George Drinkard, district president, and Mrs. Abbie M. Groot, state president, were in attendance.

PLAYGROUNDS IN 2 PARKS PRAISED

L. H. Weir Says Peninsula's and Sellwood's Will Equal Any In the Country.

"Portland has two of the finest playgrounds in this country," said Field Secretary L. H. Weir, of the Playground Association of America, yesterday evening after he had returned from an automobile trip about the city parks and playgrounds with Mayor Simon and City Park Superintendent E. T. Mische. "When the ideas of Mische are fully developed in Peninsula and Sellwood parks, no city in the United States will be able to boast of two better equipped or more complete playgrounds. I am greatly pleased with the development of the playground idea in Portland, considering the short time since it had its inception here. These recreation spots for children have been exceedingly well laid out. Of course, the movement for play facilities is only in its infancy here. Portland has made a good beginning, however, and the work should progress rapidly from now on. People the world over are becoming educated to the fact that playgrounds are a great force in the development of character and that money spent for this purpose is well spent. Eventually there should be a small playground for every 10 blocks and large areas at less frequent intervals for athletic purposes."

Mr. Weir is the Pacific coast field secretary of the association which he represents. He will spend his time during the next two years in visiting all the coast cities of 5000 or more inhabitants to spread the idea by means of popular lectures the playground idea. He paid a high tribute to the ability of City Superintendent Mische when he said that no man occupying a similar position in this country is better able to plan recreation and park facilities. Although it is not generally known, Superintendent Mische was largely instrumental in the planning of the great playground system of Chicago, which is perhaps the most comprehensive one in the United States. John M. Olin, a member of the park board of Madison, Wis., was a member of the party.

GEORGE SIMONS OFFERS VIEW OF REAL PAVING

"Property owners on East Division street can see what kind of pavement we have been laying if they will go to either East Thirty-seventh or East Thirty-ninth street," said George Simons of the Pacific Bridge company last evening. "At the intersection of these two streets with Division we made cuts in the pavement for the purpose of repairs. The specifications required a wearing surface two inches thick. Pieces of pavement which we took up and which are now lying on the curbstone at East Thirty-seventh and East Thirty-ninth streets show a wearing surface from four to five inches thick. Division street property owners who feel like taking a Sunday stroll can see these exhibits if they want to, and they will see that our company did not skimp on the material."

SUSPENSION OF VEHICLE TAX ADVISED BY BARBUR

"I desire to notify you that, in my opinion, you should not enforce the present vehicle tax ordinance," says City Auditor Barbur in a letter to Chief of Police Cox yesterday. "We have passed several similar ordinances that have been invalidated by court decisions and invariably the people who have paid the license fees have been poor expressmen who could ill afford to pay. I am opposed to this kind of business and feel that the city should get a proper ordinance before compelling people to pay for licenses. I consider it unfair that lawabiding citizens should be forced to put up money for vehicle taxes, only to find out afterward that the law providing such taxes was illegal."



The Really Artistic Player Piano Is the Angelus

Every intending buyer of a player piano should see the Angelus before making a final selection. It costs no more to own the best, the most artistic of players, than the indifferently good, and the Angelus is so far superior in construction, in ease of control, in perfection of musical results, as to place it a generation in advance of its competitors. There are two kinds of player pianos—the ANGELUS, and the other kind. No other player has the "Melodant," the marvelous device which separates melody and harmony, just as in hand playing. None has the Phrasing Lever, which places the entire control of phrasing under the touch of one finger. No other player has the diaphragm pneumatics, the automatic, self-opening pedals; no other permits the use of every music roll made, and none gives such perfect musical satisfaction. Seeing and hearing the Angelus enables the buyer to make intelligent comparison. Therefore, do not neglect your own interests. Angelus player pianos are no more expensive than the ordinary types of players, and may be purchased on easy payments. Your old piano taken in exchange at its full value.

The Wily B. Allen Co. PLAYER PIANOS 304 OAK ST., BET. FIFTH AND SIXTH.

Advertisement for HEALY HEIGHTS featuring a large illustration of a mountain landscape and text describing the benefits of the product. Text includes: 'IF YOU GO INTO THE IMPORTANT MATTER OF BUYING A HOMESITE WITH AN OPEN MIND—AND A DETERMINATION TO GET THE BEST AT THE FAIREST PRICE—THE CHANCES ARE YOU'LL BUY ON HEALY HEIGHTS Because The prices are not prohibitive—\$2000 for not less than 7500 square feet—larger areas in like proportion. View unexcelled. Elevation desirable. Transportation the best. TODAY is the time to make your selection. THE SWITZERLAND OF AMERICA H.E. RINER 204 Railway Exc. Bldg. Phone Marshall 2626 A2223'