

PRETTY TYPIST HAS DISAPPEARED

Edna Waulke Started to South Bend From Centralia and Mysteriously Vanished.

(Special Dispatch to The Journal.)
Centralia, Wash., Dec. 28.—Where is Miss Edna Waulke?
That is the question asked by the police of a dozen cities and the sheriff of as many counties. The girl has been missing for about two weeks and

dropped out of sight as though the ground had opened at her feet. She was last heard from by her brother in Kansas who received a cheerful postal card dated from Centralia, saying that she was on her way to South Bend and nothing has been seen of her since. Her baggage has been found intact at Centralia, and there are no indications to show that she had any intentions other than of continuing her journey after a brief stay in Centralia.
Miss Waulke graduated at the Bellingham Normal school a couple of years ago and left for Fort Scott, Kan., to join relatives soon after. She recently received word from a friend, Mrs. William Clark of South Bend, saying that Mrs. Clark's position as stenographer would soon be vacant. Miss Waulke was invited to take it and she gratefully accepted the offer. It was while on her way to South Bend for this purpose that she disappeared.
Sheriff Urquhart of Lewis county, with the police of Centralia, have been notified to make a search for her.
Miss Waulke is described as a beautiful girl who dresses with quiet taste

and possesses a fund of wit. She is highly accomplished, a finished musician, and is of petite form. Her age is 23 years, weight 130 pounds, height 5 feet 5 inches, eyes blue, hair dark brown and disposition cheerful. She had no known love affairs to distrust her, and was not known to possess any friends in these parts other than those of her class and associates in Bellingham, and some acquaintances in South Bend.
The authorities are inclined to believe she has fallen in the clutches of white slave agents, if indeed some more sinister fate has not befallen her.

RAISE MONEY TO IRRIGATE VALLEY

Object of Syndicate of Business Men Is to Develop Projects in Willamette.

It was announced yesterday by E. L. Thompson, president of Hartman & Thompson, bankers, that more than the desired \$100,000 stock in the syndicate formed for development of Willamette valley irrigation projects had been subscribed. The heaviest subscribers are

T. B. Wilcox, E. S. Josselyn, C. B. Jackson, W. B. Ayer and other prominent Portland business men together with Mr. Thompson.
The purpose of the syndicate is to take up already acquired options on tracts of valley lands covering a total of probably 25,000 acres. Although the investment is expected to pay, the primary intention is to scientifically test possibilities for increased production in the Willamette valley by means of irrigation. Experiments already made show that irrigation in the Willamette valley combined with intensive farming has doubled the production of staples and vegetables. It has also been shown that while more rain falls during the winter in the valley than is absolutely desirable, the summer months are dryer than in arid regions. Mr. Thompson and his associates believe that by storing up the surplus water of winter for the thirsty crops of summer conditions will be equalized and, more important than any other consideration, big farms may be subdivided and homes provided

for two or three times the population now supported by the soil.
Mr. Thompson said yesterday that the plans of the syndicate did not prevent a broadening of operations whenever it might be convenient. Irrigation projects may be established at any desirable point. Newcomers will be taught in the ways of producing wealth from the soil and will be helped in the instituting of homes.
MME. TETRAZZINI'S PIANO
Was Struck by Fire at 215th and Oak Streets.
The beautiful Hardman piano which Madam Tetrazzini is using exclusively on her American concert tour was on display in the warerooms of the Wiley B. Allen Co., 304 Oak street, Christmas night, when for a time it looked as though the entire building would be totally destroyed by the fire. It was the only piano in the room in which it stood that escaped injury from either fire or water.

PENDELTON MAN NEW CASHIER OF LOCAL BANK
G. M. Rice, for the past six years cashier of the First National bank of Pendleton, has been appointed cashier of the Lumbermen's National bank of Portland and will take charge of his new duties soon after the first of the year. Succeeding Mr. Rice as cashier of the Pendleton bank is G. A. Hartman Jr., son of Judge G. A. Hartman of Portland and brother of E. A. Hartman, paying teller at the First National bank, this city. Mr. Rice succeeds H. D. Story who has resigned to go into other business.
White Salmon Store Sold.
(Special Dispatch to The Journal.)
White Salmon, Wash., Dec. 28.—C. W. Hunter, an experienced merchant, who came from the vicinity of Chicago to Boise recently, has purchased the mercantile business of C. M. Wolfard & Co., who owns the largest store in town.

Tull & Gibbs, Inc. Morrison at Seventh Tull & Gibbs, Inc.

PORTLAND'S FOREMOST FURNITURE AND COMPLETE HOMEFURNISHING SERVICE AGENTS FOR LEOPOLD OFFICE DESKS. EASIEST PAYMENT TERMS TO HOMEFURNISHERS

GOODS PURCHASED THE BALANCE OF THE MONTH WILL BE CHARGED ON JANUARY ACCOUNT

The Year-End Sale Brings the Most Notable Bargains in Many Months in Women's Apparel and Fine Furniture, in Rugs and Lace Curtains

An event planned in time to effect a general lowering before year-end inventory—unquestionably the greatest opportunities of the week, and in fact, in many months—a sale that brings good news to the woman who finds her apparel insufficient for the rest of the Winter months. And in this year-end sale of fine Furniture are the greatest bargains that owners and builders of fine homes in Portland have ever known of, for it presents an opportunity for selecting furniture pieces of character at the price of the much less expensive selections; will be held for future delivery if desired.

Women's Midwinter Outer Apparel Needs Are Economically Met in Year-End Sale



Four Specially - Priced Groups in Women's and Misses' Suits

- \$12.75 for Suits That Were \$25.00 to \$30.00
- \$18.75 for Suits That Were \$35, \$32.50 and \$29.50
- \$27.85 for Suits That Were \$37.50 to \$50.00

All Our Fancy Tailored Suits Worth From \$50 to \$150 are in Year-End Sale at Half Price

Three Specially - Priced Groups in Women's and Misses' Coats

- Coats That Were \$12.50 to \$15.00 Now at \$7.95
- Coats That Were \$16.50 to \$20.00 Now at \$14.85

\$17.85 for Coats That Were \$25, \$30 and \$35
All Coats That Were \$50 and Higher Now at HALF PRICE

Children's Wool Coats at Half Price

Four Specially Priced Groups in Women's and Misses' Wool and Silk Dresses

- \$29.50 for Dresses that were priced at \$45.00, \$47.50 and \$50.00 each.
- \$19.95 for Dresses that were priced from \$30 to \$40.

One-Third Off on Handsome Broadcloth, Satin and Velvet Dresses That Were \$59.50, \$69.50 and \$95.00

Year-End Sale of Corsets

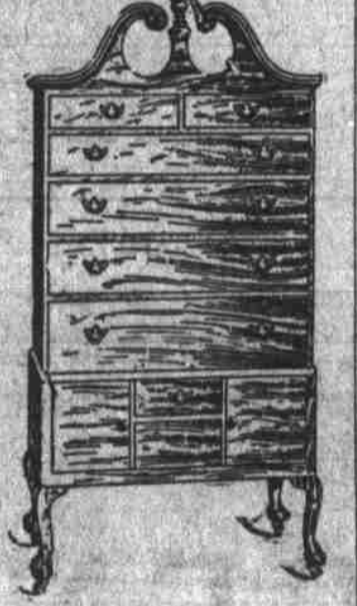
\$2.39 For \$5.00 and \$7.50 Modart, Madeleine and the Lily of France Corsets

Broken lots and odd sizes, but all good; up-to-date models and in a variety of styles to suit all figures.
Made of French coutil and striped Pekin cloth, and boned throughout with walohn.
Only 75 of these, and only one or two of a size. The woman whose needs include a new corset should not neglect the opportunity that this sale brings in good corsets. Thursday and Friday.



The Year-End Bargains in Fine Furniture are the Most Attractive Ever Offered

The collection includes High-Grade Pieces for Library and Living Room; for Parlor, Drawing Room, Music and Reception Room, for Hall and Dining Room as well as many Odd Pieces.



These in Pieces for Parlor, Reception Room, Drawing and Music Room

- \$31.50—A mahogany Center Table with carved base. Regular price \$58.00.
- \$33.75—Music Cabinet in rosewood, with gold ornamentation. Regular price \$79.00.
- \$34.25—Music Cabinet in gold leaf. Regular price \$67.00.
- \$36.50—A mahogany Parlor Cabinet with two glass shelves and mirror back. Regular price \$83.00.
- \$42.50—A mahogany Sofa in Colonial design. Regular price \$77.00.
- \$39.75—Music Cabinet in walnut and gold. Regular price \$78.00.
- \$45.25—Another Music Cabinet in walnut and gold. Regular price \$92.50.
- \$47.50—A Drawing-room Table in walnut and gold. Regular price \$85.00.
- \$49.50—A Drawing-room Table in gold leaf, Louis XV period, with onyx top. Regular price \$129.00.
- \$54.50—A mahogany Hall Chair, Charles II period. Regular price \$89.00.
- \$58.50—A Colonial Parlor Cabinet in mahogany, with three glass shelves. Regular price \$118.00.
- \$67.50—Drawing-room Cabinet in gold leaf, with hand-painted panel. A splendid reproduction of the Louis XV period. Regular price \$185.00.
- \$58.75—A Drawing-room Suite of three pieces and a correct reproduction of the Louis XVI period. Frames of walnut. Regular price \$139.00.
- \$79.50—A mahogany Cabinet that is a splendid example of the Sheraton inlaid. Has two glass shelves and mirror in back. Regular price \$215.00.
- \$85.25—Parlor Suite of three pieces in walnut and gold. A reproduction of the Louis XV period. Regular price \$195.00.
- \$97.50—A Drawing-room Cabinet in Louis XV design. Regular price \$235.00.
- \$86.50—A solid mahogany 3-piece Parlor Suite in a design of the Louis XV period. Regular price \$195.00.

Easy Payment Terms to Homefurnishers

In Hall Pieces and Odd Pieces

- \$27.50—Hall Arm Chair in old oak frame with upholstered seat. Regular price \$49.00.
- \$18.75—Chair to match, the regular price of which is \$33.00.
- \$29.75—Oak Hall Chair, with cane seat and back. Regular price \$39.00.
- \$39.75—A mahogany Card Table with folding top, the regular price of which is \$69.00.
- \$47.50—Mahogany Low Boy—a Colonial reproduction. Regular price \$85.00.
- \$47.50—A mahogany Trousseau Chest with tray and drawers. Regular price \$65.00.
- \$67.50—Mahogany Console Table in Colonial design. Regular price \$103.00.
- \$86.50—Mahogany Low Boy that is a splendid Colonial representation. Regular price \$155.00.
- \$98.50—Mahogany Desk Chiffonier. A handsome piece. Regular price \$216.00.
- \$145.00—Mahogany High Boy, that is a splendid reproduction from one of the time of Washington. Regular price \$275.00.

These Are the Ones

(world's best hand-tailored ready-to-wear clothing)



Offered Now at Annual CLEARANCE Sale Reductions:

Nothing Reserved

- \$20 and \$25 Values Now \$15.50
- \$30 and \$35 Values Now \$19.50
- \$37.50 and \$40 Vals. Now \$24.50
- \$45 and \$50 Values Now \$32.50

"Where You Get the Best"

On Washington Near Fifth

Robinson & Co.

On Washington Near Fifth

BRAND NEW ALL STEEL

20th Century Limited Trains to New York

The first all steel equipment is now operating in the world's most famous train leaving Chicago 2:30 p.m. daily via

New York Central Lines



Lake Shore New York Central
Arriving Grand Central Terminal in the heart of New York 9:25 a.m.

Or you may choose one of two other famous trains

Leaves Chicago 6:30 p.m. Lake Shore Limited 23 Hours to New York Arrives New York 5:25 p.m.

Leaves Chicago 10:15 a.m. Lake Shore Six 22 Hours to New York Arrives New York 9:11 a.m.

Tickets and Sleeping Car accommodations and full information furnished on application to your local agent, or to

W. C. SEACHREST, Gen. Agt. Pass. Dept., 109 Third St., Portland, Or.
L. A. ROBISON, G. P. A., Cleveland WARREN J. LYNCH, P. T. M., Chicago