

# ANNEXATION HAS MUCH OPPOSITION

## Prominent Citizens Working Against Taking in Part of Clackamas County.

The Multnomah-Clackamas Anti-Annexation association is, as the campaign warms, growing rapidly in membership. It has been permanently organized with Samuel Connell as president and an executive committee made up of a number of prominent citizens and business men. Members of the executive committee are: A. L. Mills, Harvey Beckwith, Lionel R. Webster, Theodore B. Wilcox, Charles H. Carey, Andrew C. Smith, W. L. Lightner, Rev. T. L. Elliot, L. A. Lewis, Edward Cockingham, D. Solis Cohen, J. C. Ainsworth, H. C. Wortman, L. Gerlinger, William D. Wheelwright.

Among the members of the association are: C. F. Adams, Fletcher Linn, Will Ljoman, Henry L. Pittock, G. F. Johnson, I. N. Fletschner, E. L. Thompson, C. S. Jackson, Phil Metschan, A. L. Mills, E. Henry Wemme, J. Frank Watson, Lewis Russell, Lionel R. Webster, Harvey Beckwith, Herman Wittenberg, Theodore B. Wilcox, L. A. Lewis, Rev. T. L. Elliot, J. W. Nowikirk, Charles H. Carey, Thomas Scott Brooke, Edward Cockingham, A. E. Rokey, Lancing Stout, A. E. Clarke, William MacRae, Samuel Connell, D. Solis Cohen, Charles K. Henry, George Lawrence Jr., Andrew C. Smith, J. C. Ainsworth, Leslie M. Scott, Martin L. Pipes, Charles F. Swigert, Don J. Zan, M. C. Dickenson, William D. Wheelwright, H. W. Hogue, H. C. Wortman, L. Gerlinger, W. L. Lightner, W. A. Montgomery, R. F. Fraul, Samuel F. Owen, R. L. Durham, Everett Ames, Kenworth, Bebe, F. Eggert, J. W. Minto, Walter A. Holt, A. Feldenheimer, H. R. Albee, Allan Welch Smith, James B. Kerr, William T. Muir, S. M. Euders, F. A. Nitchev, Seneca Smith, Chester B. Murphy, George L. Baker, C. G. Reed, Frank C. Egges, Frank R. Kerr, George Good, George S. Shepard, Arnold S. Rockwell, Charles Feldenheimer, J. J. Kadderly, Joseph P. Cronin, V. M. C. Silva.

**Sees Evil in Scheme.**  
Prominent citizens and business men who have aligned themselves in opposition to the annexation movement express adverse arguments in a multi-tude of ways. No good but much evil do they see in the proposed scheme. That annexation will prohibit the city and county government affairs being administered by one set of officials is one of their strongest arguments. They consider the burden that the new territory would shift to Multnomah county.

**By Taking Over the New Territory, Multnomah county would assume an additional indebtedness of \$100,000,"** said Samuel Connell, president of the American Bank & Trust company, and lumber manufacturer, who has been named as president of the anti-annexation association. "Taxes got from the added territory would not compensate Multnomah for the burden. Consider the miles of roads which Multnomah county would be forced to improve. Then one must think of the confusion of records."

**World Mean Business.**  
F. Eggert, of Eggert-Young company, said he was opposed to the annexation scheme because it would make impossible the ultimate union of city and county governments. He disliked to consider the additional burden imposed upon the taxpayers of Portland.

"My principal reason for opposing annexation," said D. Solis Cohen, an attorney, "is that I look for the time soon to come when the Multnomah county government and the city of Portland will be combined under one set of officials. This union probably never would become a reality if we added more square miles to our county than we now have."

"The territory that annexationists seek to add is in need of practically everything. Upon the taxpayers of Portland, Multnomah county, would fall the burden of improving this vast district. Multnomah county has enough burdens—and we do not want more."

**Opposes Annexation.**  
Dr. Andrew C. Smith, prominent physician and surgeon, said he was opposed to the annexation plan because of the added expense it would impose upon the voters and taxpayers. He said



### KRYPTOK FAR VISION

Without Lines in the Lens

OLDBYMEN reading from manuscript, duck and peer at the congregation.  
LAWYERS reading impressive scollions from the code, duck and peer at the jury.  
BUSINESS MEN, engaged with correspondents, duck and peer at entering visitors.

### KRYPTOKS CURE IT

"Practically the same," "just as good," etc., etc., are the distinguishing terms your hear applied to inquiries.

We Are Headquarters for the Genuine Kryptok Lenses in Oregon. You Are Sure of Getting the "Real Thing" Here.

### THOMPSON EYESIGHT SPECIALIST

SECOND FLOOR CORBERT BLDG., Fifth Floor, Morrison.  
Portland's Exclusive Optical Place.

He believed the future city government should be made up of the combined city and county governments and that the addition at this time of new territory would make this impracticable. He spoke of the increased mileage of roads to be cared for and improved, of the interference with the records and of the resultant feeling throughout the state that Multnomah was being hogged.

**Wemme Sees Light.**  
"In my judgment there is a tendency to narrow the sphere of a great city and to combine city and county governments. If we encumber ourselves with new territory and make of Multnomah an extremely large county, we cannot expect to form the county of Portland and city of Portland as one."

**Among the members of the association are:** C. F. Adams, Fletcher Linn, Will Ljoman, Henry L. Pittock, G. F. Johnson, I. N. Fletschner, E. L. Thompson, C. S. Jackson, Phil Metschan, A. L. Mills, E. Henry Wemme, J. Frank Watson, Lewis Russell, Lionel R. Webster, Harvey Beckwith, Herman Wittenberg, Theodore B. Wilcox, L. A. Lewis, Rev. T. L. Elliot, J. W. Nowikirk, Charles H. Carey, Thomas Scott Brooke, Edward Cockingham, A. E. Rokey, Lancing Stout, A. E. Clarke, William MacRae, Samuel Connell, D. Solis Cohen, Charles K. Henry, George Lawrence Jr., Andrew C. Smith, J. C. Ainsworth, Leslie M. Scott, Martin L. Pipes, Charles F. Swigert, Don J. Zan, M. C. Dickenson, William D. Wheelwright, H. W. Hogue, H. C. Wortman, L. Gerlinger, W. L. Lightner, W. A. Montgomery, R. F. Fraul, Samuel F. Owen, R. L. Durham, Everett Ames, Kenworth, Bebe, F. Eggert, J. W. Minto, Walter A. Holt, A. Feldenheimer, H. R. Albee, Allan Welch Smith, James B. Kerr, William T. Muir, S. M. Euders, F. A. Nitchev, Seneca Smith, Chester B. Murphy, George L. Baker, C. G. Reed, Frank C. Egges, Frank R. Kerr, George Good, George S. Shepard, Arnold S. Rockwell, Charles Feldenheimer, J. J. Kadderly, Joseph P. Cronin, V. M. C. Silva.



### Pretty Metal Picture Frames

Make Acceptable Xmas Gifts

And Now Comes an Opportune Sale

—Thousands of Metal Picture Frames in every size from a small petite to a large cabinet picture. Gold plated, burnished, silver, French gray, Roman and Grecian gold, oxidized and black. In plain and fancy patterns.

Special 19c, 28c, 39c, 63c to \$1.48

### LAST WEEK OF SMART SET AND NEMO CORSET DEMONSTRATION

### Heating Question Solved in These Oil Burners

**\$4.50 Perfection Oil Heaters—Special ... \$3.95**

—This is a large-size heater and is guaranteed in every way. Made by the Standard Oil Co.

**\$3.25 Perfection Oil Heaters—Special ... \$2.97.**

—This is the same heater as above, only a little smaller in size. Standard Oil Co.

**Self-Light Gas Mantles ... 33c**

—All you do is turn on the gas—it lights itself. And if this mantle breaks or fails to light within 60 days from purchase, bring it back and get a new one.

**Hawk Playing Cards Pack ... 8c**

—This is an extra fine quality linen-finish card. Has a perfect slip. One thousand packs. Special 8¢ a pack.

**50c Linen Box Paper—Special 29c**

—Five hundred boxes of fine Linen Paper, in white only, full royal size, 50 sheets and 50 envelopes. Packed in a fine blue linen box.

**10c Dozen Score Cards—Special ... 5c**

—Score cards for five hundred. The large size, complete with schedule, rules and 24-hand score.

### Muslin Pin Cushions

Very Special Sale



—Get your supply for Christmas work now. They will be very scarce in a few weeks. The best quality made.

Size 3x3 to 4x4 Square, Special ..... 5¢  
Size 4x8 to 4 1/2 x 10 Oblong, Special ..... 7¢  
Size 4x12 to 5x12 Oblong, Special ..... 10¢  
Size 4x18 Oblong, Special ..... 15¢  
Size 5x24 to 5x36 Oblong, Special ..... 25¢

**New Books 50c**

The Squaw Man; Gret; The Climax; The Scarlet Pimpernel; Mary Jane's Pa; Rebecca Mary.

Overlook Land company, director of the Portland Automobile club, and known throughout the state as an indefatigable worker in the interests of good roads, told of his switch from the ranks of the annexationists to those of the anti.

"While before I favored annexation," he said, "I now oppose it. I have been taught the error of my way. I have become convinced that annexation is really a matter of cutting off the nose to spite the face. Annexation of new territory would put a double weight upon Multnomah county and the city of Portland. I worked for annexation because I thought it would mean better roads."

"I didn't realize at that time that the new territory would be a white elephant on our hands. I hope that the voters of the state of Oregon can be brought to realize what this apparently harmless annexation scheme means."

"Think of the confusion in abstracts and in titles," said J. Frank Watson, president of the Merchants' National bank. "In the first place annexation is not necessary; no sane argument can

be advanced for it; so why not stay where we are? In the matter of abstracts and titles it would cause great trouble. As secretary of the Sellwood Real Estate company I remember the great difficulty we encountered when Multnomah county took over that suburb.

"Careful purchasers of property require complete abstracts, which will mean that every title will need be based on the records of Clackamas county, one of the oldest in the state. I am opposed to annexation because of a dozen reasons. I find no argument in its favor."

### GREATER LIVESTOCK FAIR FOR NEXT YEAR

Plans for a greater Portland fair were discussed and approved at a meeting of directors of the Portland Fair & Livestock association held Saturday afternoon. B. S. Josselyn, president of the Portland Railway, Light & Power company, presented a plan for double track

ing Sandy Road by parking on each side the tracks. The directors unanimously approved this plan, believing that it will be the best both for property owners and the streetcar company. President Josselyn said word would be started early in the spring if all property owners agreed. The election of officers resulted as follows:

**Hood Business Men on Excursion**  
(Special Dispatch to The Journal.)  
Hood River, Or., Nov. 1.—Through the courtesy of the Mt. Hood Railroad company, the Hood River Business Men's association was given a trip over its line of railroad as far south as Parkdale, the present terminus of the road that is about 22 miles south of Hood River. The excursion left Hood

River at noon Monday, and returned early in the evening. The business men were greeted at Parkdale by several of the prominent fruit growers of that section, who took them for a drive over the country and served a substantial

luncheon. Parkdale is the center of the upper valley section that is being rapidly developed.

Less than an acre of Benton county ground produced 26 tons of rutabagas.

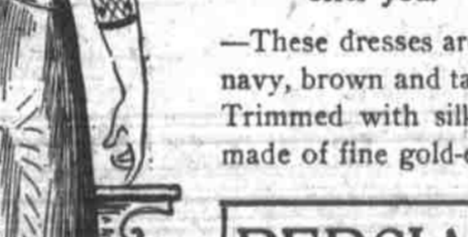
### BETTER HEALTH WILL RESULT

To the thousands of persons who suffer from ailments of the Stomach, Liver, Kidneys or Bowels, and who therefore feel half sick all the time, we want to urge an immediate trial of Hostetter's Stomach Bitters. We know from past experience that it will be of great benefit to you and bring about an improvement in your health. It is for Indigestion, Dyspepsia, Constipation and Malarial Fever. Try it today.

### Manufacturers' Rug Samples Are Very Low

—Every fall we receive the Carpet/Rug Samples from this manufacturer. They are all bound ready for use. Made of the finest quality Tapestry Brussels, Body Brussels and Axminster. These rugs are very handy all over the house. They are great carpet-savers. The colors and the patterns are extremely attractive. This sale is bound to be widely attended, as hundreds of people await this announcement. A great economy sale.

**\$2.50 Tapestry Brussels Rugs Sp'l 79c**  
**\$3.50 Body Brussels Rugs . . . 98c**  
**\$4.50 Axminster Rugs Special . \$1.39**



### Women's-Misses' Velvetten Dresses

Exceptionally Smart and Dignified \$17.85  
Tailored Styles in These New Models \$17.85

—Everybody knows NOW that this is a "Velveteen" dress season. The demand speaks for itself. But we knew weeks ago of the favor that these garments would enjoy, and so we prepared accordingly and advantageously.

—While most stores are finding it hard to buy HIGH-CLASS VELVETEEN DRESSES TO SELL at a MODERATE PRICE, we offer you these extraordinary bargains at \$17.85.

—Turn these dresses inside out. Scrutinize the tailoring. Examine the quality of the lining and the finishing of these garments. You cannot fail to be impressed. At \$17.85 they are undoubtedly the greatest values in dresses we have had the good fortune to offer you.

—These dresses are made of extra good quality velveteen, in black, navy, brown and taupe. They are plain tailored. Piped with satin. Trimmed with silk cord and buttons. The yoke and sleeves are made of fine gold-embroidered net.

### PERSIAN WAISTS at \$3.98

Regular Price \$5.00

—These suit blouses are today the scarcest article in women's wearing apparel. In the face of this indisputable fact, we offer you an assortment of beautiful new tailormade Persian silk waists.

—In pretty, soft Persian colors. They are made with plaited front, coat sleeves with cuff, and with stock collar.

Pellard Suits and Forsythe Waists

ing Sandy Road by parking on each side the tracks. The directors unanimously approved this plan, believing that it will be the best both for property owners and the streetcar company. President Josselyn said word would be started early in the spring if all property owners agreed. The election of officers resulted as follows:

**Hood Business Men on Excursion**  
(Special Dispatch to The Journal.)  
Hood River, Or., Nov. 1.—Through the courtesy of the Mt. Hood Railroad company, the Hood River Business Men's association was given a trip over its line of railroad as far south as Parkdale, the present terminus of the road that is about 22 miles south of Hood River. The excursion left Hood

River at noon Monday, and returned early in the evening. The business men were greeted at Parkdale by several of the prominent fruit growers of that section, who took them for a drive over the country and served a substantial

luncheon. Parkdale is the center of the upper valley section that is being rapidly developed.

Less than an acre of Benton county ground produced 26 tons of rutabagas.

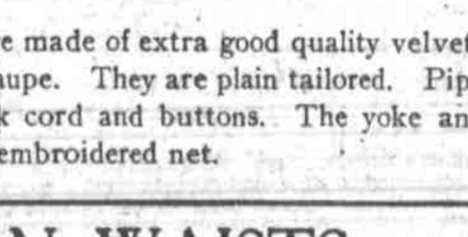
### BETTER HEALTH WILL RESULT

To the thousands of persons who suffer from ailments of the Stomach, Liver, Kidneys or Bowels, and who therefore feel half sick all the time, we want to urge an immediate trial of Hostetter's Stomach Bitters. We know from past experience that it will be of great benefit to you and bring about an improvement in your health. It is for Indigestion, Dyspepsia, Constipation and Malarial Fever. Try it today.

### Manufacturers' Rug Samples Are Very Low

—Every fall we receive the Carpet/Rug Samples from this manufacturer. They are all bound ready for use. Made of the finest quality Tapestry Brussels, Body Brussels and Axminster. These rugs are very handy all over the house. They are great carpet-savers. The colors and the patterns are extremely attractive. This sale is bound to be widely attended, as hundreds of people await this announcement. A great economy sale.

**\$2.50 Tapestry Brussels Rugs Sp'l 79c**  
**\$3.50 Body Brussels Rugs . . . 98c**  
**\$4.50 Axminster Rugs Special . \$1.39**



### Women's-Misses' Velvetten Dresses

Exceptionally Smart and Dignified \$17.85  
Tailored Styles in These New Models \$17.85

—Everybody knows NOW that this is a "Velveteen" dress season. The demand speaks for itself. But we knew weeks ago of the favor that these garments would enjoy, and so we prepared accordingly and advantageously.

—While most stores are finding it hard to buy HIGH-CLASS VELVETEEN DRESSES TO SELL at a MODERATE PRICE, we offer you these extraordinary bargains at \$17.85.

—Turn these dresses inside out. Scrutinize the tailoring. Examine the quality of the lining and the finishing of these garments. You cannot fail to be impressed. At \$17.85 they are undoubtedly the greatest values in dresses we have had the good fortune to offer you.

—These dresses are made of extra good quality velveteen, in black, navy, brown and taupe. They are plain tailored. Piped with satin. Trimmed with silk cord and buttons. The yoke and sleeves are made of fine gold-embroidered net.

### PERSIAN WAISTS at \$3.98

Regular Price \$5.00

—These suit blouses are today the scarcest article in women's wearing apparel. In the face of this indisputable fact, we offer you an assortment of beautiful new tailormade Persian silk waists.

—In pretty, soft Persian colors. They are made with plaited front, coat sleeves with cuff, and with stock collar.

Pellard Suits and Forsythe Waists

ing Sandy Road by parking on each side the tracks. The directors unanimously approved this plan, believing that it will be the best both for property owners and the streetcar company. President Josselyn said word would be started early in the spring if all property owners agreed. The election of officers resulted as follows:

**Hood Business Men on Excursion**  
(Special Dispatch to The Journal.)  
Hood River, Or., Nov. 1.—Through the courtesy of the Mt. Hood Railroad company, the Hood River Business Men's association was given a trip over its line of railroad as far south as Parkdale, the present terminus of the road that is about 22 miles south of Hood River. The excursion left Hood

River at noon Monday, and returned early in the evening. The business men were greeted at Parkdale by several of the prominent fruit growers of that section, who took them for a drive over the country and served a substantial

luncheon. Parkdale is the center of the upper valley section that is being rapidly developed.

Less than an acre of Benton county ground produced 26 tons of rutabagas.

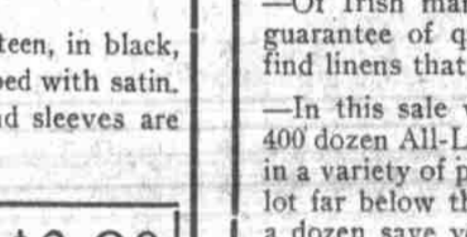
### BETTER HEALTH WILL RESULT

To the thousands of persons who suffer from ailments of the Stomach, Liver, Kidneys or Bowels, and who therefore feel half sick all the time, we want to urge an immediate trial of Hostetter's Stomach Bitters. We know from past experience that it will be of great benefit to you and bring about an improvement in your health. It is for Indigestion, Dyspepsia, Constipation and Malarial Fever. Try it today.

### Manufacturers' Rug Samples Are Very Low

—Every fall we receive the Carpet/Rug Samples from this manufacturer. They are all bound ready for use. Made of the finest quality Tapestry Brussels, Body Brussels and Axminster. These rugs are very handy all over the house. They are great carpet-savers. The colors and the patterns are extremely attractive. This sale is bound to be widely attended, as hundreds of people await this announcement. A great economy sale.

**\$2.50 Tapestry Brussels Rugs Sp'l 79c**  
**\$3.50 Body Brussels Rugs . . . 98c**  
**\$4.50 Axminster Rugs Special . \$1.39**



### Women's-Misses' Velvetten Dresses

Exceptionally Smart and Dignified \$17.85  
Tailored Styles in These New Models \$17.85

—Everybody knows NOW that this is a "Velveteen" dress season. The demand speaks for itself. But we knew weeks ago of the favor that these garments would enjoy, and so we prepared accordingly and advantageously.

—While most stores are finding it hard to buy HIGH-CLASS VELVETEEN DRESSES TO SELL at a MODERATE PRICE, we offer you these extraordinary bargains at \$17.85.

—Turn these dresses inside out. Scrutinize the tailoring. Examine the quality of the lining and the finishing of these garments. You cannot fail to be impressed. At \$17.85 they are undoubtedly the greatest values in dresses we have had the good fortune to offer you.

—These dresses are made of extra good quality velveteen, in black, navy, brown and taupe. They are plain tailored. Piped with satin. Trimmed with silk cord and buttons. The yoke and sleeves are made of fine gold-embroidered net.

### PERSIAN WAISTS at \$3.98

Regular Price \$5.00

—These suit blouses are today the scarcest article in women's wearing apparel. In the face of this indisputable fact, we offer you an assortment of beautiful new tailormade Persian silk waists.

—In pretty, soft Persian colors. They are made with plaited front, coat sleeves with cuff, and with stock collar.

Pellard Suits and Forsythe Waists

ing Sandy Road by parking on each side the tracks. The directors unanimously approved this plan, believing that it will be the best both for property owners and the streetcar company. President Josselyn said word would be started early in the spring if all property owners agreed. The election of officers resulted as follows:

**Hood Business Men on Excursion**  
(Special Dispatch to The Journal.)  
Hood River, Or., Nov. 1.—Through the courtesy of the Mt. Hood Railroad company, the Hood River Business Men's association was given a trip over its line of railroad as far south as Parkdale, the present terminus of the road that is about 22 miles south of Hood River. The excursion left Hood

River at noon Monday, and returned early in the evening. The business men were greeted at Parkdale by several of the prominent fruit growers of that section, who took them for a drive over the country and served a substantial

luncheon. Parkdale is the center of the upper valley section that is being rapidly developed.

Less than an acre of Benton county ground produced 26 tons of rutabagas.

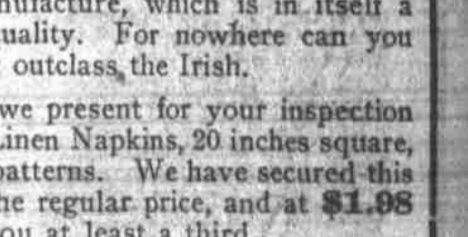
### BETTER HEALTH WILL RESULT

To the thousands of persons who suffer from ailments of the Stomach, Liver, Kidneys or Bowels, and who therefore feel half sick all the time, we want to urge an immediate trial of Hostetter's Stomach Bitters. We know from past experience that it will be of great benefit to you and bring about an improvement in your health. It is for Indigestion, Dyspepsia, Constipation and Malarial Fever. Try it today.

### Manufacturers' Rug Samples Are Very Low

—Every fall we receive the Carpet/Rug Samples from this manufacturer. They are all bound ready for use. Made of the finest quality Tapestry Brussels, Body Brussels and Axminster. These rugs are very handy all over the house. They are great carpet-savers. The colors and the patterns are extremely attractive. This sale is bound to be widely attended, as hundreds of people await this announcement. A great economy sale.

**\$2.50 Tapestry Brussels Rugs Sp'l 79c**  
**\$3.50 Body Brussels Rugs . . . 98c**  
**\$4.50 Axminster Rugs Special . \$1.39**



### Women's-Misses' Velvetten Dresses

Exceptionally Smart and Dignified \$17.85  
Tailored Styles in These New Models \$17.85

—Everybody knows NOW that this is a "Velveteen" dress season. The demand speaks for itself. But we knew weeks ago of the favor that these garments would enjoy, and so we prepared accordingly and advantageously.

—While most stores are finding it hard to buy HIGH-CLASS VELVETEEN DRESSES TO SELL at a MODERATE PRICE, we offer you these extraordinary bargains at \$17.85.

—Turn these dresses inside out. Scrutinize the tailoring. Examine the quality of the lining and the finishing of these garments. You cannot fail to be impressed. At \$17.85 they are undoubtedly the greatest values in dresses we have had the good fortune to offer you.

—These dresses are made of extra good quality velveteen, in black, navy, brown and taupe. They are plain tailored. Piped with satin. Trimmed with silk cord and buttons. The yoke and sleeves are made of fine gold-embroidered net.

### PERSIAN WAISTS at \$3.98

Regular Price \$5.00

—These suit blouses are today the scarcest article in women's wearing apparel. In the face of this indisputable fact, we offer you an assortment of beautiful new tailormade Persian silk waists.

—In pretty, soft Persian colors. They are made with plaited front, coat sleeves with cuff, and with stock collar.

Pellard Suits and Forsythe Waists

—These Puffs are of the finest imported human hair and in styles such as Empire, Recamier, Chantecler and Marie Antoinette.

**36-inch Real Hair Nets Spec'l 18c**  
**36-inch Rubber Hair Nets, 3 for 25c**  
**36-inch Silk Hair Nets, 6 for 25c**  
**75c Very Large Wool Rolls, Special at 39c**  
**Cape Wool, All Shades, Special, Yard 30c**