

**PETITIONERS ASK OREGON ELECTRIC BE GIVEN PERMIT**

Local Merchants and People in Valley Want to See This Line and United Railways Connected.

Interest taken by the public in the matter of granting the Oregon Electric Railway company a franchise for operation of passenger trains over Salmon and Tenth streets through the city, is indicated by a number of petitions submitted to the city council and mayor urging favorable action.

It is evidently realized by the writers of these endorsements that by bringing passengers from the valley into the city proper, traffic will be much augmented and incidentally the city will profit by increased business activity. Anything that tends to stimulate commerce and develop the country, it is held, should be encouraged and not blocked.

The Oregon Electric petitioned the city council some time ago for the franchise. It has been approved by the street committee and is now before the executive board. As soon as the board determines the amount the company will be required to pay for the franchise, the city council will then take final action on the proposed ordinance.

The company wants the Salmon and Tenth street franchise to improve its passenger service and enable it to carry passengers from points on the United Railways to points on the Oregon Electric without the annoyance of making them walk a mile or more from one car to another, and besides, closing of the gap separating the two lines would bring travelers into the very heart of the city if they so desire, without having to board a streetcar or other means of conveyance.

**Appeals to Suburbanites.**  
This feature appeals strongly to the suburbanites who now have to go to the Jefferson street depot to board the Oregon Electric cars or to Stark street to board the United Railways cars. With a line through the city, passengers may board or disembark from a car at any street crossing along the line exactly as if they were served by a streetcar line.

Charles H. Carey, attorney for the company, says that the company has been urged by its patrons to secure the franchise, and that it is many of these who have now flooded the council with petitions urging that it be granted with as little delay as possible.

Practically every commercial body in the Willamette valley has sent in its endorsement and in addition thereto a large number of valley business men, who have large dealings in Portland, are urging strongly that the petition be granted.

The proposed franchise calls for beginning of construction of the extension within 60 days from the time of its final approval, and that the extension shall be completed on or before January 1, 1911.

**Petitioners Numerous.**  
If poor service is given the council may declare the franchise forfeited. It contains a common user's clause and the city reserves the right to purchase the line at the end of 15 years should this be desired.

Petitions urging favorable action were sent by business men of Forest Grove and Hillsboro, board of trade of Hillsboro, board of trade of Forest Grove, Women's club of Forest Grove, Men's Association of Salem, board of trade of Salem, City Council of Salem, business men of Albany, Albany Commercial Club, business men of Albany, Newberg and McLinnville, South Portland Improvement association, 50 per cent of the property owners on Tenth street, many of property owners on Salmon street, and the following Portland firms:

Marshall-Wells Hardware company; Goodyear Rubber company; Blake-McFall company; Pacific Paper company; Zimmerman-Wells-Brown company; American Wood Working Machinery company; Hammond Manufacturing company; Portland Machine company; Eccles & Smith company; Fairbanks-Morse company; Chicago Belt company; William Gadsby & Sons; Merchants National Bank; Honeyman Hardware company; Prael, Hegala & company; F. C. Stetler & company; Western Clay Manufacturing company; Dwight Edwards company; Pacific Coast Rubber company; Lang & company; Zan Brothers; Charles F. Beebe company; J. E. Haseloffs & company; Kilburn Stationery & Printing company; W. G. McPherson & company; The Effeyman Leather company; Dougherty-Fitchan Shoe company; John A. Roebeling & Sons; Lumbermens National Bank; Smith & Watson Iron Works; Portland Lumber company; Studabaker Bros. company; Oliver Chilled Plov Works; Beall & company; A. H. Averill; Gaar Scott & company; J. A. Freeman & Son; W. B. Glafke & company; Bell & company; Page & Son; May Hardware company; Macken & Kealey; Pierson & Page company; Moore & Crowell; Richard Martin; Willamette Fuel & Supply company; Haywood Bros.; R. M. Wade & company; Morgan-Archley Furniture company; Ira F. Powers Furniture company; George Lawrence company; Crain & company; Pines; Thorsen & company; The Gauld company; American Chile company; The McMillan Grain company; F. E. Harms company; The Portland Flouring Mills; John McCracken & company; The J. K. Gill company; James-Cress company; Rasmussen company; Albers Bros. Milling company; Portland Seed company; Oregon Moline Plow company; Scott Munsell Implement company.

**Georgia Veterans in Reunion.**  
Columbus, Ga., Oct. 15—Lavishly decorated with flags and bunting, Columbus extended a hearty greeting to the host of Confederate veterans and their friends who assembled here today for the annual state reunion. The reception of the visitors and the opening formalities occupied today. The annual parade will take place tomorrow, which will be the concluding day of the gathering.

**1-4—One Fourth Off**  
In order to introduce genuine man-tailored ladies' suits made of man's materials we offer the entire line at one-fourth off for 10 days only. The garments are not to be compared with "tailor-made" suits made of cheap cotton mixed dress goods. Ladies' coats, silk petticoats, shirt waists and raincoats one-fourth off. A few suits still remaining from Drake & Swan stock will be closed out regardless of cost. The Allen Co., 415 Washington, corner Eleventh. Agents for Warners, Redfern and Thomson's suits. Two experienced saleswomen wanted.

# Portland's Great Credit House

## Furnish Your Home on Easy Payments

We want you to feel free to come to this big store and buy everything you need to make your home comfortable and attractive, with the assurance that you will get the best possible goods at the lowest possible prices, and on credit terms that will make the paying decidedly easy

### 250 High-Class Machines

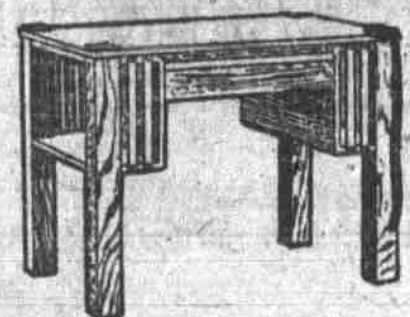
#### \$60 Values \$25



A carload of Sewing Machines to meet the demand of a high-grade machine at a moderate price—that's what we now have on hand. This is a high-arm, ball-bearing machine, with automatic lift, automatic bobbin-winder, the double four-motion drop feed, self-threading noiseless shuttle—in fact, all the latest improvements. All the attachments, worth \$5.00, given free. We ship these machines by the carload and sell hundreds of them every year. It is known as the "GEVURTZ SPECIAL," being made to our order by a manufacturer not in the sewing machine trust. This enables us to sell a high-class machine for only

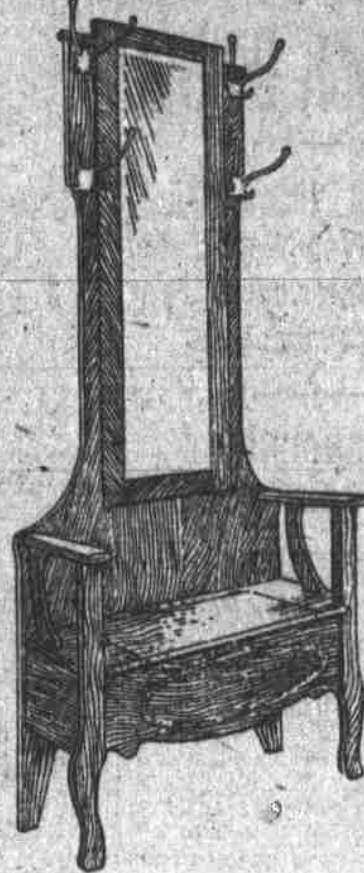
## \$25

\$1 Down, 50c Weekly



### \$22.50 Library Tables \$15

No. 485 — Made just like the cut, in finest Eastern quarter-sawed oak, wax-filled and hand-rubbed, early English and waxed finish. A very handsome model for library or parlor. Many other styles at special prices.



### Hall Tree

Very attractive Hall Tree, just like cut, in selected eastern oak, with French bevel plate mirror 9x39 inches; also fitted with oxidized hat hooks, rubber box in seat, etc. Special at..... \$22

### Extra Quality Brussels Rugs

A special sale of extra quality Brussels Rugs, 9x12 feet in size. Over 20 patterns from which to make a choice.

\$27.50 Values, Special Price Only

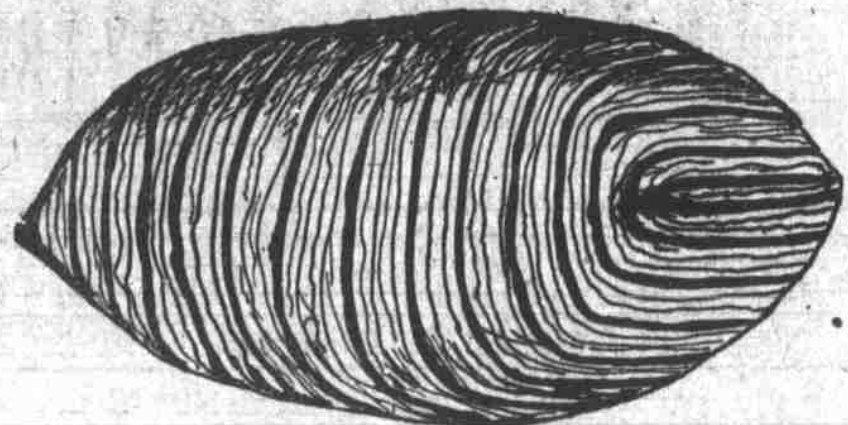
## \$19.50

These are extra high grade, guaranteed fast colors, guaranteed wearing qualities. A genuine snap in first-quality Brussels Rugs.



### Genuine 2 1/2 Pound Feather Pillows

#### Each, Only ..... 25c



### Emmerich's Genuine Feathers

500 Emmerich Bros.' Celebrated Feather Pillows received Saturday will be placed on sale Thursday at a sensational price. These are the genuine All-Feather Pillows in the old-fashioned Amoskeag ticking. We wish to emphasize the fact that these are the genuine article—not an imitation, not a mixture of feathers and shoddy wool. Emmerich Pillows are all real feathers. As we wish to favor some 250 of our friends with this special bargain. No phone orders, no deliveries unless other goods are sold. No C. O. D. orders. Two pillows to a customer. Why do we offer such bargains? Just to enliven trade in our Bedding Department.



### These 16-In. Stands Only 75c

A Thursday special. Hardwood Stands, 16x16-inch tops, imitation golden oak finish, shaped nearly like the cut; regular \$1.50 values. No C. O. D. or phone orders. Deliveries at our convenience.

### \$1.60 Inlaid Linoleum 95c

English, German and American makes; extra thick, clean, new patterns; worth regularly \$1.60, special price, per yard, only.....95c  
Bring your room measurements with you if possible.

### This \$45 Solid Oak Buffet Only \$29



No. 151—Made of genuine solid quarter-sawed oak hand-polished, 42 inches long, 21 inches deep, 58 inches high. French plate mirror 10x36-inch size. Large deep linen drawer, felt-lined silver drawer. Colonial design. Worth \$45.00. This week at Gevurtz'

## \$29

### Hampshire Bedspreads \$1.40 Values for 85c

A special sale of Hampshire Bedspreads, 72 inches wide, 84 inches long; pure white, three-ply; both warp and filling from superior long staple cotton; warranted; regularly worth \$1.40, on special sale at.....85c



### Tailored Suits

The season's approved fashions are pictured in our extensive showing of Tailored Suits. Smart, perfectly tailored, dashing new models from the master designers of the season's modes. While the styles vary, yet the short, straight cut coats and narrow skirts are perhaps the most favored. Every desirable model represented in our great showing.



### Prices \$25 to \$40

Easy Terms of Payment

### New Waists

Don't overlook this important section. Tailored Waists seem to be in the lead, yet there are many beautiful styles in lace and silk, which are new and becoming.

### Best Steel Range on the Market

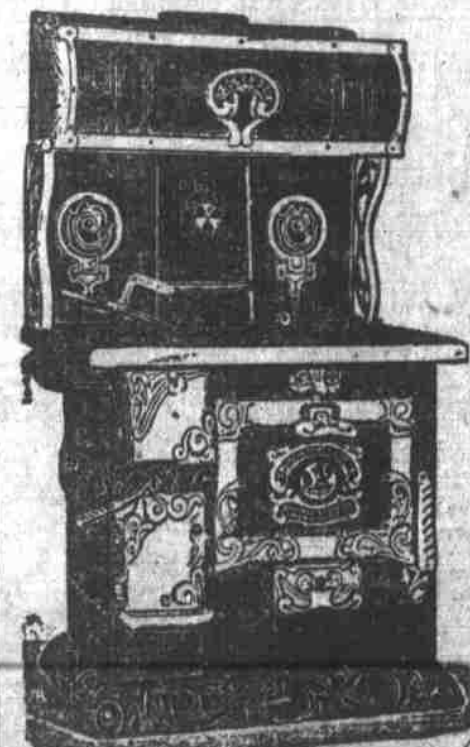
And costs you at least \$10 less than the ordinary range, and \$10 saved is worth considering.

### The Gevurtz "Eclipse" Range

Built to Bake Quickly—Possesses durability, efficiency and economy; will last a lifetime, sure and certain baker; requires little fuel.

It Never Disappoints

Prices, according to size—\$40 to \$55.



Pay \$5.00 Down \$1.00 a Week

Why Gevurtz Sells the Cheapest? We Buy in Immense Quantities & Ship in Full Carload Lots

# GEVURTZ & SONS

FIRST AND YAMHILL SECOND AND YAMHILL

### Silk Petticoats \$4.95

In black and colors—a big special at our price. Some of them being \$8 and \$9 values. On sale for Thursday only—

