

TEST NEWS OF THE WORLD'S MARKETS

Only a Small Number of Silver-sides Caught and Steelhead Season Has Not Really Opened—Yaquina Silvers.

Much complaint is heard from the Columbia river on account of the very small run of salmon at this time. The catch is confined principally to silver-sides and only a small number of these are being taken.

Plenty of Clams and Crabs. Plenty of clams and crabs are now offering in the local market. Receipts of crabs from Yaquina bay are very liberal and sales are being made at \$1.50 for large and \$1.25 for medium sized.

Beef Market Is Steady. Sales of inspected beef are reported steady around 8c a pound for steers, though there are reports of 9c business in a small way.

Goats Sell at 5 Cents. Quite a number of dressed goats have invaded the Front street trade again.

Stalled Poultry Given Start on Front Street and Modern Equipment Is Secured—The Plan Looks Good.

Because farmers will not furnish the trade here with a better class of poultry, Front street has been compelled to adapt the eastern style of securing fat stock for those who want it.

CHICAGO WHEAT IS INCLINED TO HARDEN. CHICAGO WHEAT MARKET. Year Today Ago.

Few Transactions Above 11c and This Takes the Bulk of the Business—Most Dealers Are Taking Supplies.

Oregon Hop Market. Crop 1910... 100,000. Contracted... 25,000. Sold to date... 25,000.

Practically half of Oregon's 1910 hop crop has already passed out of the hands of producers up to this time.

Local Growers Refuse to Sell Potatoes and Therefore the Dealers Say They Must Buy Elsewhere—Californias 90c

Potato growers are holding their supplies here and there is only a nominal movement reported from local farms.

According to dealers, California is in the market at present only for nominal supplies of club and bluestem, and only the very choicest of the latter variety finds buyers from the north.

Wheat Bids Are Slow and Generally Around 82c Track for Club—Small Lots Are Being Taken by California.

Dealers here are not anxious bidders for wheat at the moment, and while there is still some talk of nominal business at 82c track for club, the general trade is not quoting over 82c.

There is no change in the flour situation. On account of the high prices asked by millers, no business of consequence is passing with the orient.

Celery Selling Lower. With heavier supplies offering, celery prices along Front street are generally lower.

FRONT STREET QUOTATIONS. Hops, Wool and Hides.

Wool—Northern. 1910. Willamette valley, 16 1/2c; eastern Oregon, 12 1/2c.

HIDES—Dry hides, 15 1/2c @ 16 1/2c lb; green, 6 1/2c @ 7 1/2c; bull, green, 5 1/2c @ 6 1/2c.

POULTRY—Mixed chickens, 15 1/2c @ 16c; hens, 14 1/2c @ 15c; stags, 13 1/2c @ 14c.

WHEAT—Track delivery—Club, 82c @ 84c; bluestem, 77c; fort, 75c @ 76c.

GRAIN, Flour and Hay. WHEAT—Track delivery—Club, 82c @ 84c; bluestem, 77c; fort, 75c @ 76c.

SUGAR—Cane, 16 1/2c; beet, 15 1/2c; fruit or berry, 15 1/2c; dry granulated, 15 1/2c.

FRUITS—Oranges—Valencia, 14c @ 15c; lemons, 16c @ 17c; grapefruit, 12c @ 13c.

WIRE NAILS—Basis, \$2.70. Northwest Bank Statement. Clearings today \$1,748,578.61.

Chicago Cash Wheat. Chicago, Oct. 14.—Cash wheat: No. 2 hard, 96 3/4c @ 97c.

Liverpool Wheat Market. Liverpool, Oct. 14.—Wheat: October... 78 3/4c; December... 78 3/4c.

SEATTLE PRODUCE PRICES FOR TODAY. Seattle, Wash., Oct. 14.—Butter—Washington creamery, firsts, 36c; ranch, 35c.

HOGS DOWN NICKLE IN PORTLAND YARD. Best Sell at \$10—Sheep Prices Shaded and Yearling Wethers at \$4.25.

PORTLAND LIVESTOCK RUN. Friday... 180 Cattle, Sheep. Thursday... 418 Cattle, Sheep.

Among the Shippers. Cattle—E. M. Adams, Stanfield, Or; 1 load; B. R. Nichols, Ore; 2 loads.

STEERS. 5 steers... 1794 4.50. 2 steers... 1060 4.50. 26 steers... 771 4.75.

COWS. 4 cows... 1040 4.00. 1 cow... 550 4.00. 10 cows... 926 4.25.

SHEEP AND LAMBS. 224 lambs... 56 5.25. 84 hogs... 211 10.00. 22 hogs... 229 10.00.

CHICKENS. 34 chickens... 34.00. 14 sheep-lambs... 75 4.75. 26 ewes... 86 2.75.

General range of livestock values as indicated by latest sales in the Portland yards.

CATTLE—Best Oregon steers, 35.00; fancy steers, 35.00 @ 37.25; common steers, \$4.00 @ 5.00.

HOGS—Best east of the mountains, 19.00; ordinary, 18.50; stockers and feeders, 18.50.

SHEEP—Best yearling wethers, \$4.25; old wethers, \$4.00; spring lambs, Willamette valley, \$4.00 @ 5.00.

STEEL STOCK MAGNET FOR ENTIRE MARKET. New York, Oct. 14.—Money showed a harder tendency today and stocks advanced.

Stocks opened with a sharp upturn and the feeling became more bullish during the session.

Other sharp advances were: Atlatlan 7 1/2, American Smelter & Refining 1 1/2, Erie 1 1/2.

Range of N. Y. prices furnished by Overbeck & Cooke Co. Amal. Copper Co. 68 1/2 @ 69 1/2.

WINTER BANANAS TOP THE MARKET. The Northwestern Fruit exchange reports for The Journal today as follows:

Rome Beauties, extra fancy, 4 tier and larger, \$1.50. Rome Beauties, fancy, 4 tier and larger, \$1.25.

Stapmans, 4 tier and larger, \$1.50. Commerce, 4 tier and larger, \$1.40.

Chicago, 4 tier and larger, \$1.50. Chicago, 3 1/2 and 5 tier, \$1.25.

Capital, \$500,000. Oldest National Bank West of the Rocky Mountain.

Overbeck & Cooke Co. Commercial and Savings Accounts and "Banking by Mail" Solicited from Corporations and Individuals.

First National Bank. Capital \$1,500,000. Surplus \$750,000.

McGrath & Neuhausen Co. Bonds, Investments, Timber Lands. 701-2-3-4 LEWIS BUILDING. PORTLAND, OREGON.

Apples Sold by N. W. Fruit Exchange at \$2.50 f. o. b.—Detailed List of Sales.

Amal. Copper Co. 68 1/2 @ 69 1/2. Am. E. & F. c. 52 1/2 @ 53 1/2.

Am. Sugar, c. 118 @ 117 1/2. Am. Smelt, c. 73 1/2 @ 74 1/2.

Am. Woolen, c. 31 1/2 @ 31 3/4. Atchafalaya, c. 104 1/2 @ 105 1/2.

Brooklyn R. T. 77 3/4 @ 77 3/4. Can. Pacific, c. 195 @ 194 1/2.

Del. & Hudson, c. 160 @ 159 1/2. Erie, c. 29 1/2 @ 29 3/4.

Gen. Northern, pfd. 130 1/2 @ 131 1/2. Illinois Central, 135 @ 135 1/2.

Inter. Met. c. 21 1/2 @ 21 3/4. Louisville & Nash, 147 1/2 @ 147 1/2.

Manhattan Ry. 143 1/2 @ 143 1/2. M. & C. R. c. 35 1/2 @ 35 3/4.

U. S. Steel Co. c. 73 1/2 @ 73 3/4. Wabash, c. 18 1/2 @ 18 3/4.

Westinghouse, 72 3/4 @ 72 3/4. Amer. Can. c. 9 1/2 @ 9 3/4.

Call Money, 2 per cent ask. Astoria is getting ready to celebrate its centennial in 1911.

PRICE OF PRODUCE AT SAN FRANCISCO

San Francisco, Oct. 14.—Wheat—Australia and propo, \$1.60 @ 1.67 1/2; Sonora, \$1.70 @ 1.75; California club, \$1.50 @ 1.57 1/2.

Butter—California fresh, extra, 35c; firsts, 33c; seconds, 32c; storage, 29 1/2c.

Cheese—New California flats, fancy, 17c; firsts, 15 1/2c; seconds, 13c; California Young America, fancy, 17c; firsts, 15 1/2c.

Potatoes—Per cental, River Whites, \$1.45 @ 1.50; Russet, \$1.40 @ 1.50; sweet, \$2.00 @ 2.10.

Onions—Per sack, \$1.00 @ 1.10. Oranges—Per box, choice, \$1.50 @ 2.50; extra, choice, \$2.50 @ 3.50; Valencia, choice, \$3.50 @ 4.00; fancy, \$3.50 @ 4.00.

William J. Bryan is arranging to spend two days the latter part of October stumping the Eighteenth Illinois district against Speaker Cannon.

The farmers in all directions are speeding the plow and putting in the fall crops, says the Salem Statesman.

LYCEUM COURSE TO OPEN OCTOBER 25

(Special Dispatch to The Journal.) Vancouver, Wash., Oct. 14.—The first number in a series of entertainments to be given this winter under the auspices of the Vancouver Lyceum club will be held Tuesday evening, October 25, when Honorable Ernest J. Sims will deliver his celebrated lecture, "The Lost Cord."

This lecture is spoken of in terms of highest praise by leading newspapers of the middle west. It is remarkable for beauty of diction, masterly word painting, and a superb blending of wit, wisdom, pathos and poetry.

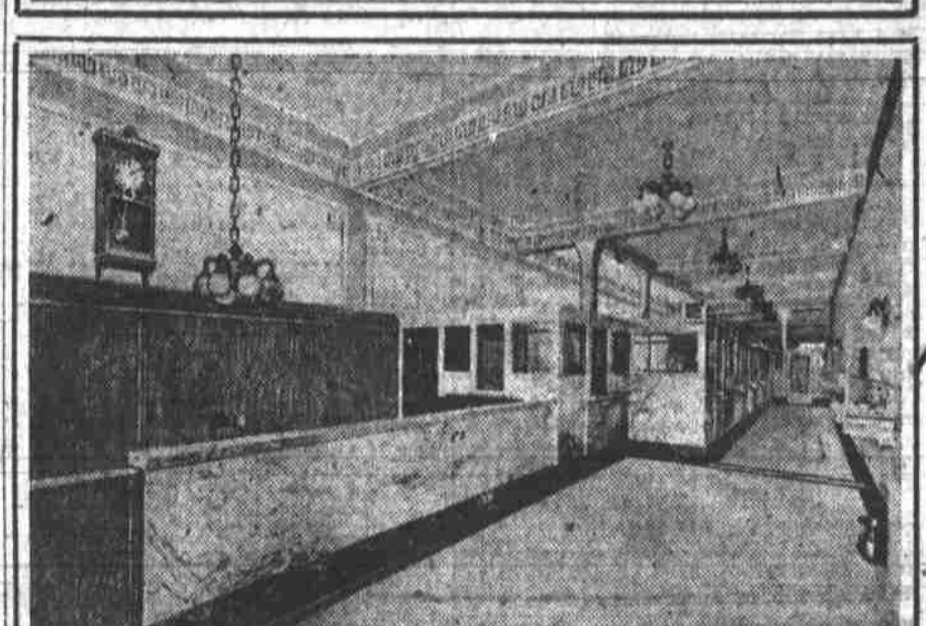
The lecture will be given in the assembly room of the high school building.

Capital \$1,000,000. Surplus and Profits 800,000.00.

OFFICERS. J. C. AINSWORTH, Pres. R. W. SCHMEER, Cashier. R. LEA BARNES, Vice-President. A. M. WRIGHT, Assistant Cashier. W. A. HOLT, Assistant Cashier.

DRAFTS ISSUED ON ALL FOREIGN COUNTRIES PAYMENTS MADE BY POST TO PARTIES ABROAD WITHOUT COST TO RECIPIENTS.

THE UNITED STATES NATIONAL BANK. PORTLAND, OREGON. UNITED STATES DEPOSITORY. Capital \$1,000,000. Surplus and Profits 800,000.00.



GEORGE W. BATES & CO. BANKERS. Commercial and Savings Accounts and "Banking by Mail" Solicited from Corporations and Individuals.

LUMBERMENS NATIONAL BANK. CORNER FIFTH AND STARK STREETS. PORTLAND, OREGON. Capital, \$500,000.

First National Bank. Capital \$1,500,000. Surplus \$750,000. Oldest National Bank West of the Rocky Mountain.

Overbeck & Cooke Co. Commercial and Savings Accounts and "Banking by Mail" Solicited from Corporations and Individuals.

McGrath & Neuhausen Co. Bonds, Investments, Timber Lands. 701-2-3-4 LEWIS BUILDING. PORTLAND, OREGON.